

**STATE OF NORTH DAKOTA
PUBLIC SERVICE COMMISSION**

**Lake Region State College
1.6 MW Wind Turbine – Ramsey County
Siting Application**

Case No. PU-11-686

NOTICE OF FILING AND NOTICE OF OPPORTUNITY FOR HEARING

December 21, 2011

On December 7, 2011, Lake Region State College filed an application for a certificate of site compatibility to authorize construction of a single 1.6 MW wind turbine in North Creel Township 154N Range 64W in Ramsey County, North Dakota as shown on the attached map.

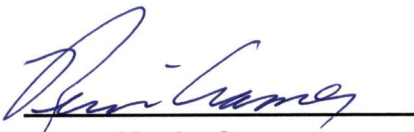
The issues to be considered in this proceeding are:

1. Will the location, construction, and operation of the proposed facilities produce minimal adverse effects on the environment and upon the welfare of the citizens of North Dakota?
2. Are the proposed facilities compatible with the environmental preservation and the efficient use of resources?
3. Will the proposed facility locations minimize adverse human and environmental impact while ensuring continuing system reliability and integrity and ensuring that energy needs are met and fulfilled in an orderly and timely fashion?

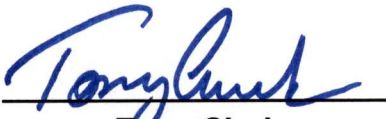
Those interested are invited to comment on the application in writing. Persons desiring a hearing must file a written request identifying their interest in the proceeding and the reasons for requesting a hearing. Comments and requests for hearings must be received by **January 17, 2011**. If deemed appropriate, the Commission can determine the matter without a hearing.

For more information contact the Public Service Commission, State Capitol, Bismarck, North Dakota 58505, 701-328-2400; or Relay North Dakota 1-800-366-6888 TTY. If you require any auxiliary aids or services, such as readers, signers, or braille materials please notify the Commission, at least 24 hours in advance.

PUBLIC SERVICE COMMISSION



**Kevin Cramer
Commissioner**



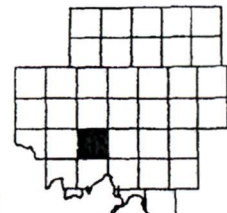
**Tony Clark
Chairman**



**Brian P. Kalk
Commissioner**



MAP OF NORTH CREEL

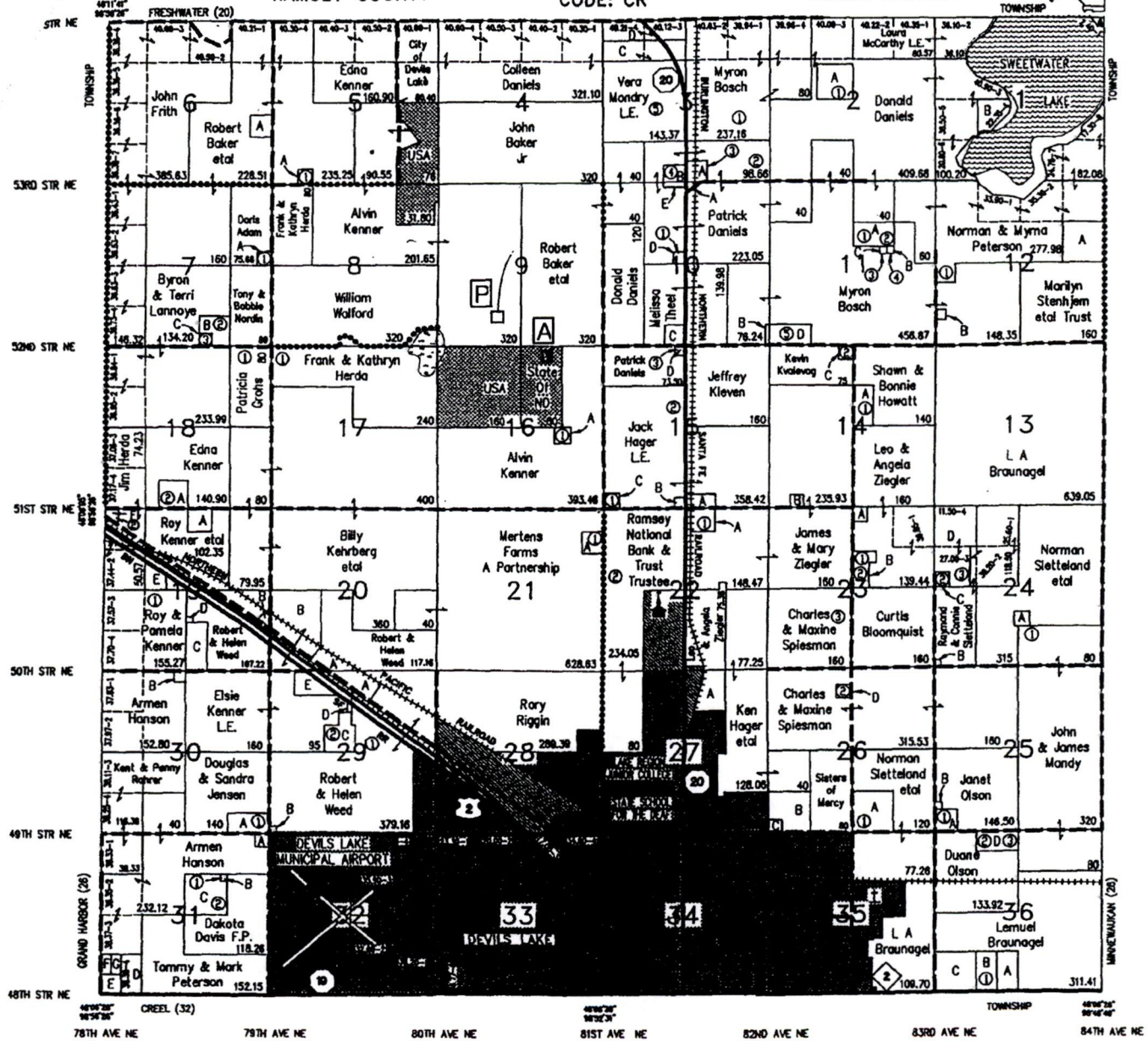


TOWNSHIP: 154 N
RAMSEY COUNTY

MOLAND ATLAS COMPANY LLC COPYRIGHT 2007

CODE: CR

RANGE: 64 W
NORTH DAKOTA



SEE LETTERED SMALL TRACTS DIRECTORY FOLLOWING TOWNSHIP MAPS