



Lake Region State College Wind Turbine Project



Lake Region State College - Wind Turbine Project

Bi-Weekly Executive Summary # 5 - November 09, 2012

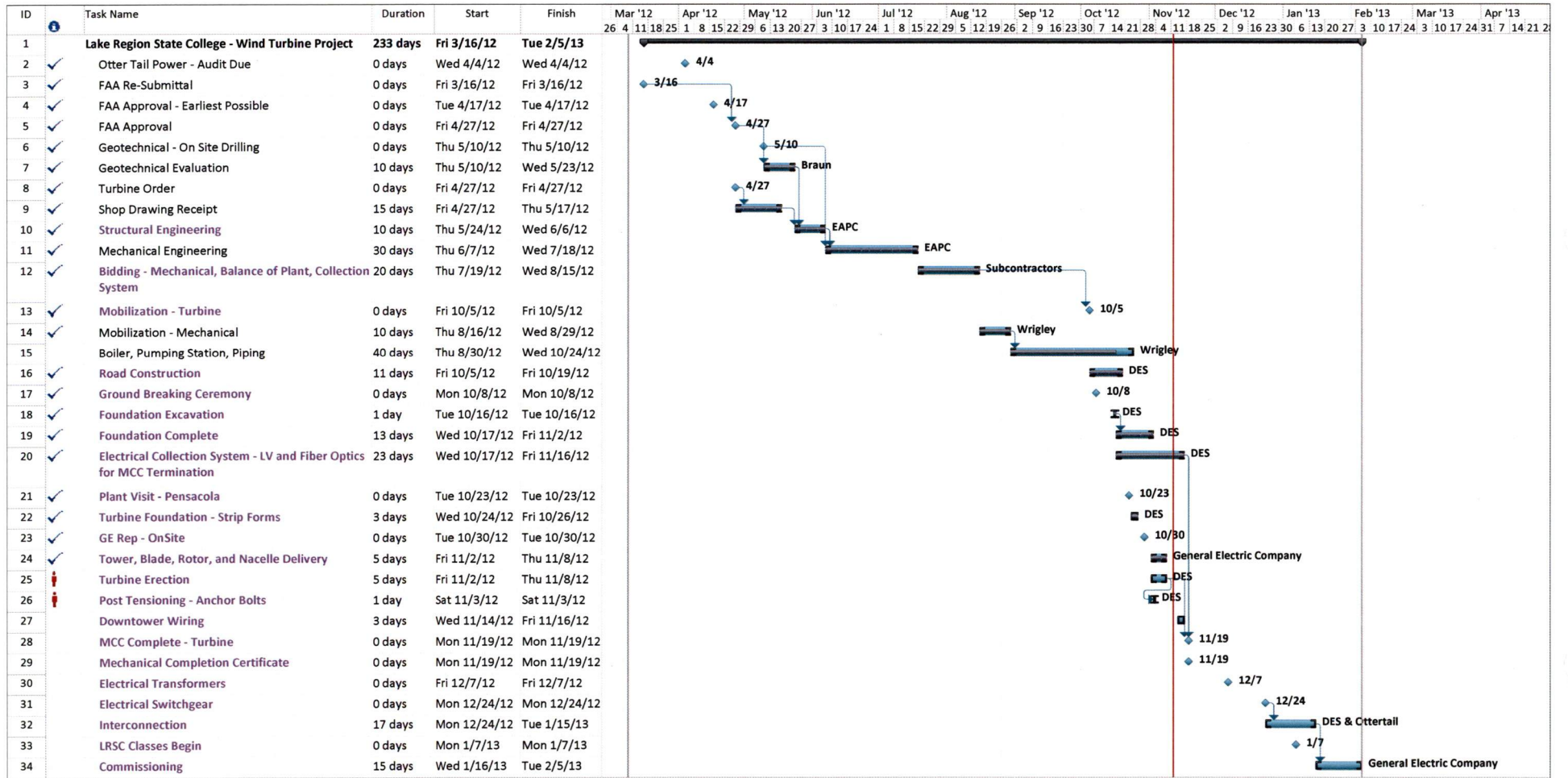
#	Major Activities Performed this Bi-Week:	Responsibility	% Complete	Comments
1	DTU (Downtower Unit) and Platform Installed on Pier	EAPC/ESG	100%	
2	Base and Mid Tower Erection, Grouting, Hub Assembly	EAPC/ESG	0%	Scheduled for 11-12 - Various Delays, Including Weather
3	Complete Erection, Upper Tower, Nacelle, and Hub w/Blades	EAPC/ESG	0%	Scheduled for 11-12-through 11-14
4	SCADA Software and Hardware - Delivered to LRSC IT Personnel	EAPC/ESG	100%	
5	Otter Tail - Coordination of Switchgear and Metering Requirements	ESG/EAPC/Otter Tail	75%	
6	Electrical Cable and Fiber - Collector	ESG	100%	
7	Tower, Rotor, Blades, and Nacelle - Equipment Delivery	EAPC/ESG	100%	
8				
9				

#	Major Activities To Be Performed for the Upcoming Bi-Week:	Responsibility	% Complete	Comments
1	Downtower Wiring	DES		Complete by Friday 11-16
2	Completion of Turbine Installation - Tower, Blades, & Nacelle	DES		Delayed - Mechanical Completion to Follow
3	Mechanical - Work Ongoing - B1 and B2 Online	ESG / Wrigley		B3 Remains - Waiting for Electrical Equipment and Outage
4	Mechanical - Controls Completion	ESG / Johnson Controls		Scheduled to be Complete by 11-23
5	Mechanical - Completed Boiler Demolition	ESG / Wrigley		Scheduled to be Complete by 11-30
6	Mechanical - ESG Commissioning	ESG		Scheduled to be Complete by 11-30
7	Propane Air System - Installation	ESG		To be Determined

#	Critical Issues: (Refer to Issues Log for detailed status)	Responsibility	Risks and/or Impact / Comments
1			
2			

#	Upcoming Major Milestones, Meetings, and Deliverables:	Date/Deadline	Status	Comments
1	Turbine - Mechanical Completion Certificate	11/19/2012		
2	Last Electrical Transformers / Switchgear to Arrive	12/24/2012		
3	Schedule Power Outage with LRSC			

Total Percent Complete 50%



Project: NDSU ES Project Date: Mon 11/12/12	Task		Summary		External Milestone		Inactive Summary		Manual Summary Rollup		Finish-only
	Split		Project Summary		Inactive Task		Manual Task		Manual Summary		Deadline
	Milestone		External Tasks		Inactive Milestone		Duration-only		Start-only		Progress



Lake Region

State College



Joe Henn

Project Manager



306 N. Whitney Street

Marshall, MN 56258

507-226-3887 Office/Cell

320-323-3506 Fax

joe.henn@lesg.com



Concrete Pier Backfilled



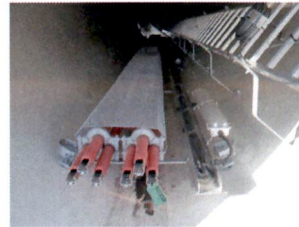
**DTU (Down Tower Unit)
Electrical Component Set
on Platform and Pier**



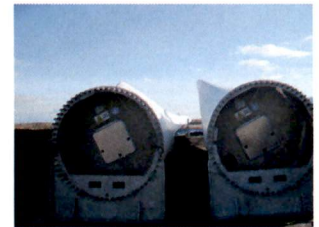
**Nacelle Delivered and
Inspected**



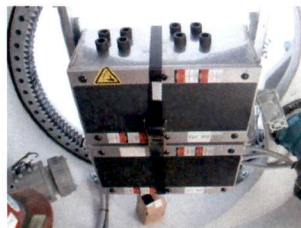
**Base, Tower Unit
Delivered and Installed,
Access Door Shown**



**Tower Units Delivered
and Inspected**



**Blades Delivered and
Inspected**



**Hub Assembly Delivered
and Inspected**



**Electrical Interconnect
Location Ready for
Transformers, Switchgear,
and Communications Hut**



**Assembly Crane Erected
and Supported with Cribs**

Week Ending 11-06-2012