



Lake Region State College Wind Turbine Project



Lake Region State College - Wind Turbine Project Public Service Commission PU-11-686

Bi-Weekly Executive Summary # 5 - November 30, 2012

| # | Major Activities Performed this Bi-Week: | Responsibility | % Complete | Comments |
|---|---|------------------------|------------|----------|
| 1 | Complete Erection, Tower, Nacelle, and Hub w/Blades | EAPC/ESG | 100% | |
| 2 | SCADA Software and Hardware - Installed in IT Server Room | EAPC/ESG | 100% | |
| 3 | Otter Tail - Coordination of Switchgear and Metering Requirements | ESG/EAPC/Otter Tail | 100% | |
| 4 | Tower Wiring including Down Tower Unit | EAPC/ESG | 100% | |
| 5 | Mechanical - Boilers and Pumping Station - Complete | ESG / Wrigley | 100% | |
| 6 | Mechanical - Controls Completion | ESG / Johnson Controls | 95% | |
| 7 | Mechanical - Completed Boiler Demolition | ESG / Wrigley | 95% | |
| 8 | | | | |
| 9 | | | | |

| # | Major Activities To Be Performed for the Upcoming Bi-Week: | Responsibility | % Complete | Comments |
|---|--|----------------|------------|-----------------------------------|
| 1 | Mechanical - ESG Commissioning | ESG | | Scheduled to be Complete by 12-10 |
| 2 | Mechanical - Propane Air System - Installation | ESG | | December Installation |
| 3 | Completion of Mechanical Punchlist Items | ESG Wrigley | | |
| 4 | | | | |
| 5 | | | | |
| 6 | | | | |
| 7 | | | | |

| # | Critical Issues: (Refer to Issues Log for detailed status) | Responsibility | Risks and/or Impact / Comments |
|---|--|----------------|--------------------------------|
| 1 | | | |
| 2 | | | |

| # | Upcoming Major Milestones, Meetings, and Deliverables: | Date/Deadline | Status | Comments |
|---|--|---------------|--------|----------|
| 1 | Turbine - Mechanical Completion Certificate | 11/19/2012 | | |
| 2 | Last Electrical Transformers / Switchgear to Arrive | 12/24/2012 | | |
| 3 | Schedule Power Outage with LRSC | | | |

Total Percent Complete 85%



Lake Region

State College



Joe Henn

Project Manager



306 N. Whitney Street

Marshall, MN 56258

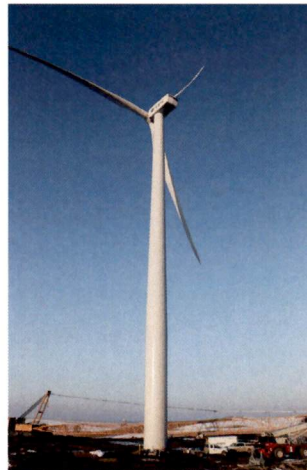
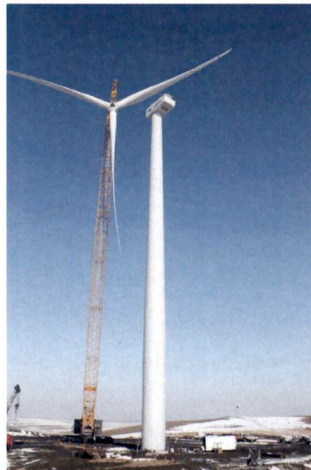
507-226-3887 Office/Cell

320-323-3506 Fax

joe.henn@lesg.com



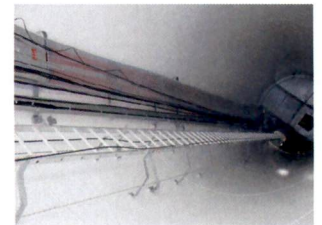
**Extension of Fiber Optics
From Interconnect to IT
Panel in Erlandson**



**Final Preparation of
Electrical Interconnect—
OTP Coordination, and
Transformer Location**

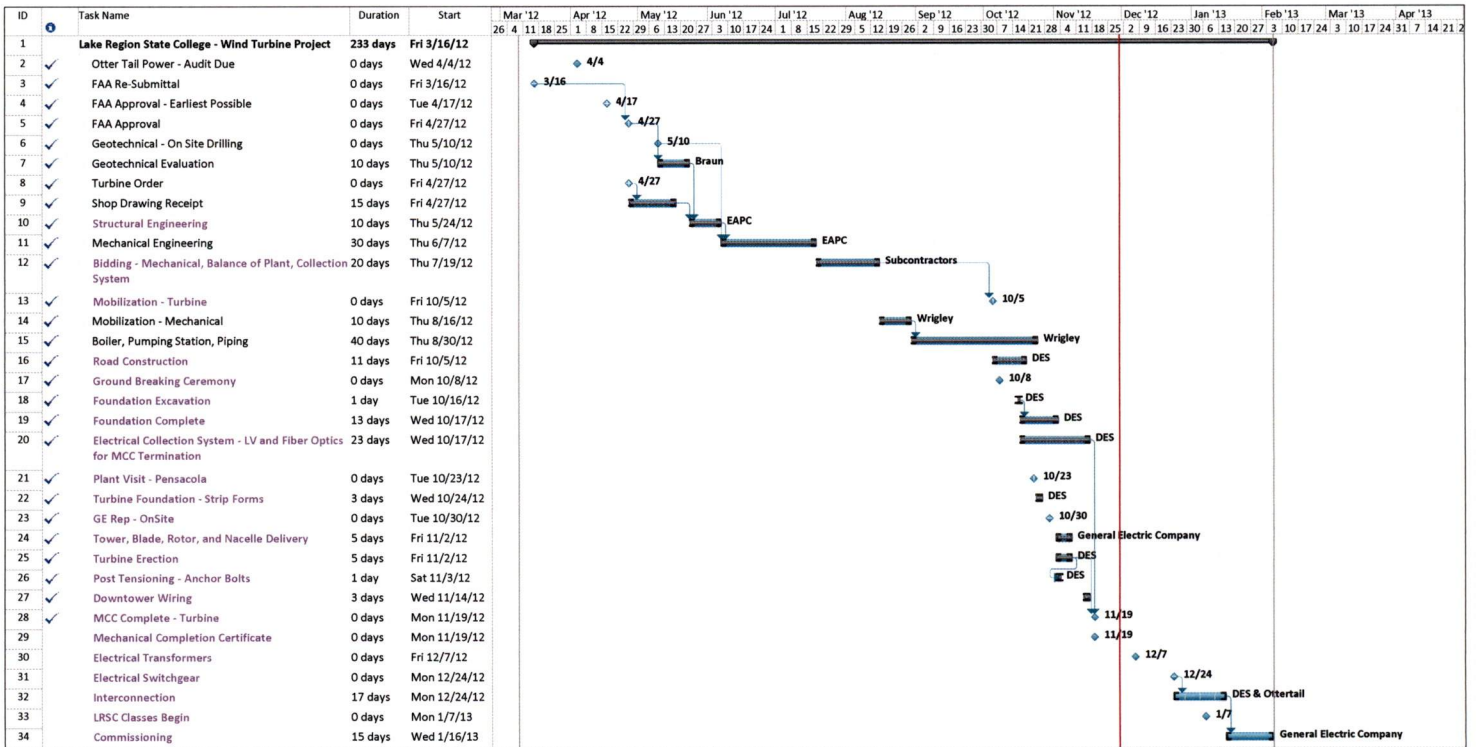


**Downtower Unit Within
Base**



**Tower Wiring and
Preparations for
Mechanical Completion**

Week Ending 11-30-2012



Project: NDSU ES Project
Date: Fri 11/30/12

| | | | | | |
|-----------|-----------------|--------------------|------------------|-----------------------|-------------|
| Task | Summary | External Milestone | Inactive Summary | Manual Summary Rollup | Finish-only |
| Split | Project Summary | Inactive Task | Manual Task | Manual Summary | Deadline |
| Milestone | External Tasks | Inactive Milestone | Duration-only | Start-only | Progress |

Page 1