



Lake Region State College Wind Turbine Project



Lake Region State College - Wind Turbine Project Public Service Commission PU-11-686

Bi-Weekly Executive Summary # 8 - January 8, 2013

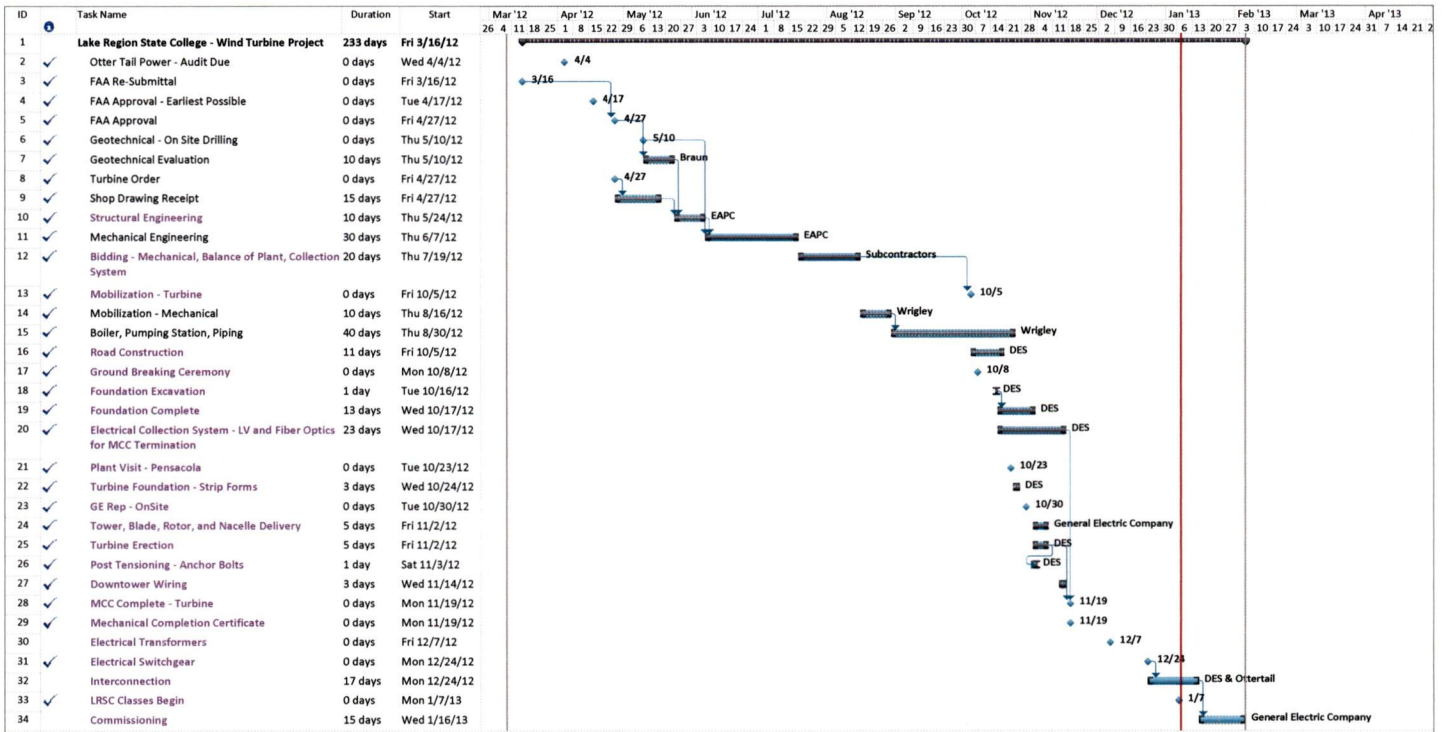
#	Major Activities Performed this Bi-Week:	Responsibility	% Complete	Comments
1	Grounding Transformer Scheduled to be Complete by 01-27	ESG/EAPC	10%	
2	Scheduled Power Outage - To Be Determined	LRSC		
3	GE Commissioning Rescheduled to be Complete 02-15	ESG/EAPC/GE	75%	
4	Mechanical - Backup Fuel Source - Propane Air System Contracted and Ready for Equipment Delivery and Installation	ESG/Wrigley	40%	

#	Major Activities To Be Performed for the Upcoming Bi-Week:	Responsibility	% Complete	Comments
1	Mechanical - Propane Air System - Installation	ESG/Wrigley		January Completion

#	Critical Issues: (Refer to Issues Log for detailed status)	Responsibility	Risks and/or Impact / Comments
1			
2			

#	Upcoming Major Milestones, Meetings, and Deliverables:	Date/Deadline	Status	Comments
1	Schedule Power Outage with LRSC			
2				
3				

Total Percent Complete 95%



Project: NDSU ES Project Date: Tue 1/8/13	Task		Summary		External Milestone		Inactive Summary		Manual Summary Rollup		Finish-only		Deadline
	Split		Project Summary		Inactive Task		Manual Task		Manual Summary		Progress		Start-only
	Milestone		External Tasks		Inactive Milestone		Duration-only		Start-only		Progress		Start-only



Lake Region

State College



Joe Henn

Project Manager



306 N. Whitney Street

Marshall, MN 56258

507-226-3887 Office/Cell

320-323-3506 Fax

joe.henn@lesg.com



Control Hut Delivered and Set for Switchgear and Interconnect



Step Up and Step Down Transformers Await Installation



Control Hut In Line with Electrical Collector Assembly



Central Pumping Station, North Boiler Room, Complete



Insulated and Labeled Mechanical Systems Complete



New Boilers (3) Complete, Insulated Domestic Hot Water Tanks Complete

Week Ending 01-04-2013