



Lake Region State College Wind Turbine Project



Lake Region State College - Wind Turbine Project Public Service Commission PU-11-686

Bi-Weekly Executive Summary # 9 - January 25, 2013

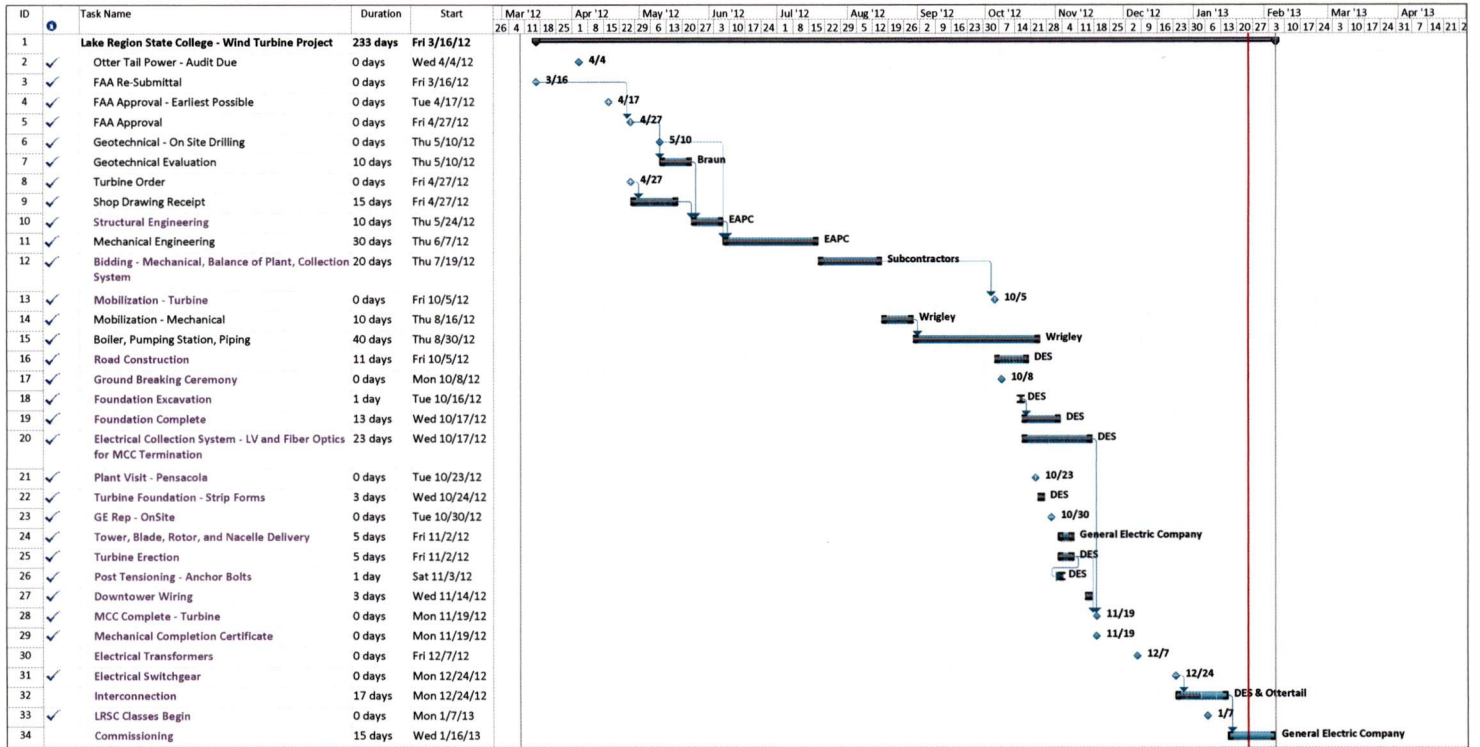
#	Major Activities Performed this Bi-Week:	Responsibility	% Complete	Comments
1	Transformers and Switchgear (Interconnect) Complete	ESG/EAPC	100%	
2	Scheduled Power Outage - 02-03-2013 - 7-11 AM	LRSC		
3	GE Commissioning 02-04 to 02-15	ESG/EAPC/GE	75%	
4	Mechanical - Backup Fuel Source - Propane Air System Equipment on Site - Concrete Pads & Piers in Progress	ESG/Wrigley	60%	

#	Major Activities To Be Performed for the Upcoming Bi-Week:	Responsibility	% Complete	Comments
1	Mechanical - Propane Air System - Installation	ESG/Wrigley		January / February Completion

#	Critical Issues: (Refer to Issues Log for detailed status)	Responsibility	Risks and/or Impact / Comments
1			
2			

#	Upcoming Major Milestones, Meetings, and Deliverables:	Date/Deadline	Status	Comments
1				
2				
3				

Total Percent Complete 98%



Project: NDSU ES Project
Date: Fri 1/25/13

Task	Summary	External Milestone	Inactive Summary	Manual Summary Rollup	Finish-only
Split	Project Summary	Inactive Task	Manual Task	Manual Summary	Deadline
Milestone	External Tasks	Inactive Milestone	Duration-only	Start-only	Progress

Page 1