

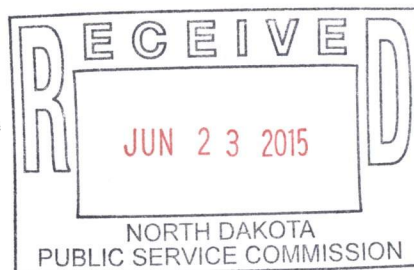
**BASIN ELECTRIC
POWER COOPERATIVE**

1717 EAST INTERSTATE AVENUE
BISMARCK, NORTH DAKOTA 58503
PHONE: 701-223-0441 FAX: 701-557-5336



June 23, 2015

Mr. Darrell Nitschke
Executive Secretary, Director of Administration
North Dakota Public Service Commission
600 E. Boulevard Dept. 408
Bismarck, ND 58505-0480



Re: Basin Electric Power Cooperative
Williston Tie Project
PU-11-692 Application Amendment

Dear Mr. Nitschke:

Basin Electric Power Cooperative (Basin Electric) is proposing an amendment to the Application for a Consolidated Certificate of Corridor Compatibility (Corridor Certificate) and Route Permit for the Williston Tie Project (PU-11-692). The following sections describe the route alignment change and structure configuration change, as well as any differences this creates from the original Application.

INTRODUCTION

On May 16, 2012, the North Dakota Public Service Commission (Commission) adopted the Findings of Fact, Conclusions of Law and Order granting a waiver of procedures and time schedules in issuing Corridor Certificate No. 134 and Route Permit No. 145 to Basin Electric (attached). This Corridor Certificate and Route Permit authorize the construction of approximately 2.1 miles of 230-kilovolt (kV) and 1.6 miles of 345-kV electric transmission line near Williston, North Dakota (Project) by Basin Electric. The majority of the Project would be built as a double-circuit transmission line with a Mountrail Williams Electric Cooperative (MWEC) 115-kV transmission line. The Project consists of three related segments. Segment A (345/115-kV) extends from a transmission line structure 1.6 miles north of the Judson Substation to the Judson Substation. Segment B (230/115-kV) extends east from the Judson Substation for 1.9 miles. Segment C (230-kV) extends from Segment B north along County Road 4 (141st Avenue NW) for 0.2 mile to the Williston Substation (Figure 1 in the attachments). The Project, which is part of the approximately 200-mile Antelope Valley Station to Neset 345-kV Transmission Line Project (AVS Project, PU-11-696), is anticipated to be in-service in late 2015 or early 2016.

OVERVIEW OF ALIGNMENT CHANGE

Following submittal of the January 2012 Application for the Project, and during the course of normal transmission line design, Basin Electric identified a minor adjustment to facilitate connection of the Project into the Williston Substation. In order to accommodate this connection, Segment C of the original alignment was shortened and the angle into the substation was reconfigured, resulting in the new, revised alignment (Figure 2 in the attachments).

The route revision extends through portions of two sections: Section 19 in T154N - R101W and Section 24 of T154N - R102W. If approved by the Commission, the total length of the Project would be approximately 34.5 feet shorter than the originally proposed alignment. The Corridor/Route revision does not alter the information presented in the original Application. The Corridor/Route revision is minor and typical of the progression of a linear project. Only siting criteria information that has changed because of the Corridor/Route revision is presented in this amendment. All other portions of the original Application remain in effect.

OVERVIEW OF STRUCTURE CHANGE

Following submittal of the January 2012 Application for the Project, through transmission planning discussions, Western Area Power Administration (Western) requested a portion of Segment C of the Project be designed and constructed to accommodate an additional 230-kV circuit. Western has future plans that require an additional interconnection into their 230-kV Williston Substation. By co-locating onto two structures of Segment C, Western and Basin Electric will minimize the impact on adjacent landowners and maintain an available Corridor/Route for future line substation connection. At such time as Western constructs their interconnection, they would extend a single circuit 230-kV line to the north prior to crossing County Road 4 (141st Avenue NW) into the Williston Substation. The 230/230-kV double circuit structure schematic is shown in Figure 3 attached. These structures would differ only slightly in appearance and height from the previous double circuit 230/115-kV and single circuit 230-kV structures previously proposed for Segment C.

TRANSMISSION FACILITY CORRIDOR AND ROUTE CRITERIA

Per North Dakota Administrative Code (NDAC) Section 69-06-08-02(1), the geographical areas listed in Table 1 shall be excluded in the consideration of a Corridor/Route for a transmission facility and shall include a buffer zone of reasonable width to protect the integrity of the area. Maps of the exclusion areas for the Project Corridor/Route are in the original Application. There are no exclusion areas within the original or revised Corridor/Route. No updates to the original exclusion area maps are necessary.

Table 1: Exclusion Areas

Geographic Area	Present within Corridor/Route Revision	Proposed Buffer	Section Addressed in Original Application
a. Designated or registered national: parks; memorial parks; historic sites and landmarks; natural landmarks; monuments; wilderness areas.	Not present within Corridor or Route.	No impacts are anticipated and no buffer is proposed.	4.8 & 4.9
b. Designated or registered state: parks; historic sites; monuments; historical markers; archaeological sites; and nature preserves.	Not present within Corridor or Route.	No impacts are anticipated and no buffer is proposed.	4.8 & 4.9
c. County parks and	Not present within	No impacts are	4.8 & 4.9

recreational areas; municipal parks; and parks owned or administered by other governmental subdivisions.	Corridor or Route.	anticipated and no buffer is proposed.	
d. Areas critical to the life stages of threatened or endangered animal or plant species	Not present within Corridor or Route.	No impacts are anticipated and no buffer is proposed.	4.17
e. Areas where animal or plant species that are unique or rare to this state would be irreversibly damaged	Not present within Corridor or Route.	No impacts are anticipated and no buffer is proposed.	4.17

Per NDAC Section 69-06-08-02(2), the geographical areas listed in Table 2 shall not be considered in the routing of a transmission facility unless the applicant shows that under the circumstances there is no reasonable alternative. In determining whether an avoidance area should be designated for a facility, the Commission may consider, among other things, the proposed management of adverse impacts; the orderly siting of facilities; system reliability and integrity; the efficient use of resources; and alternative routes. Maps of the avoidance areas for the Project Corridor/Route are in the original Application. There are no changes to avoidance areas within the Corridor/Route as a result of the revision and no updates to the avoidance area maps are necessary.

Table 2: Avoidance Areas

Geographic Area	Present within Corridor/Route Revision	Proposed Buffer			Section Addressed in Original Application
		Segment A	Segment B	Segment C	
a. Designated or registered national; historic districts; wildlife areas; wild, scenic, or recreational rivers; wildlife refuges; and grasslands.	Not present	No changes from Corridor/Route revision and no buffer is proposed.	No changes from Corridor/Route revision and no buffer is proposed.	No changes from Corridor/Route revision and no buffer is proposed.	4.8 & 4.9
b. Designated or registered state: wild, scenic, or recreational rivers; game refuges; game management areas;	Not present	No changes from Corridor/Route revision and no buffer is proposed.	No changes from Corridor/Route revision and no	No changes from Corridor/Route revision and no buffer is proposed.	4.9

Geographic Area	Present within Corridor/ Route Revision	Proposed Buffer			Section Addressed in Original Application
		Segment A	Segment B	Segment C	
management areas; forests; forest management lands; and grasslands.			buffer is proposed.		
c. Historical resources which are not designated as exclusion or avoidance areas	During the 2011 Class III Intensive Archeological Resource Inventory, two pre-contact archaeological stone resource sites were identified in the Segment A ROW.	No changes from Corridor/ Route revision and no buffer is proposed.	No changes from Corridor/ Route revision and no buffer is proposed.	The 2011 Class III Intensive Archeological Inventory covered a portion of the Corridor/ Route revision. Metcalf Archaeological Consultants reviewed the Corridor/Route revision and recommended a finding of <i>No Historic Properties Affected</i> for the revised Corridor/Route (Figure 2 attached). North Dakota State Historic Preservation Office (NDSHPO) Concurrence letter was received May 26, 2015 (attached).	4.8

Geographic Area	Present within Corridor/ Route Revision	Proposed Buffer			Section Addressed in Original Application
		Segment A	Segment B	Segment C	
d. Areas which are geologically unstable	Not present	No changes from Corridor/ Route revision and no buffer is proposed.	No changes from Corridor/ Route revision and no buffer is proposed.	No changes from Corridor/ Route revision and no buffer is proposed.	4.12
e. Within 500 feet [152.4 meters] of a residence, school, or place of business. This criterion shall not apply to a water pipeline facility.	Yes	No changes from Corridor/ Route revision.	No changes from Corridor/ Route revision.	No changes from Corridor/Route revision and no buffer is proposed. Since the January 2012 Application was filed, a new commercial building has been constructed approximately 440 feet away from the revised alignment.	4.2, 4.3, & 4.4
f. Reservoirs and municipal water supplies.	Not present	No changes from Corridor/ Route revision and no buffer is proposed.	No changes from Corridor/ Route revision and no buffer is proposed.	No changes from Corridor/ Route revision and no buffer is proposed.	4.2, 4.3, & 4.4

Geographic Area	Present within Corridor/ Route Revision	Proposed Buffer			Section Addressed in Original Application
		Segment A	Segment B	Segment C	
g. Water sources for organized rural water districts.	The eastern portion of the Corridor/ Route is served by the Williams Rural Water District.	No changes from Corridor/ Route revision and no buffer is proposed.	No changes from Corridor/ Route revision and no buffer is proposed.	No changes from Corridor/ Route revision and no buffer is proposed.	4.2, 4.3, & 4.4
h. Irrigated land. This criterion shall not apply to an underground transmission facility.	Not present	No changes from Corridor/ Route revision and no buffer is proposed.	No changes from Corridor/ Route revision and no buffer is proposed.	No changes from Corridor/ Route revision and no buffer is proposed.	4.2, 4.3, & 4.4
i. Areas of recreational significance which are not designated as exclusion areas.	Not present	No changes from Corridor/ Route revision and no buffer is proposed.	No changes from Corridor/ Route revision and no buffer is proposed.	No changes from Corridor/ Route revision and no buffer is proposed.	4.9

Per NDAC Section 69-06-08-02(3), a corridor or route shall be designated only when it is demonstrated to the Commission by the applicant that any significant adverse effects resulting from the location, construction, and maintenance of the facility as they relate to the following, will be at an acceptable minimum, or that those effects will be managed and maintained at an acceptable minimum (Table 3). Maps of the selection criteria for the Project Corridor/Route are in the original Application. There are no changes to selection criteria within the Corridor/Route as a result of the revision. No updates to the selection criteria maps are necessary.

Table 3: Selection Criteria

Selection Criteria	Potential Adverse Effects			Section Addressed in Original Application
	Segment A	Segment B	Segment C	
a. The impact upon agriculture:				
(1) Agricultural production.	No changes from Corridor/Route revision.	No changes from Corridor/Route revision.	No changes from Corridor/Route revision.	4.3 & 4.11
(2) Family farms and ranches.	No changes from Corridor/Route revision.	No changes from Corridor/Route revision.	No changes from Corridor/Route revision.	4.3 & 4.10
(3) Land which the owner demonstrates has soil, topography, drainage, and an available water supply that cause the land to be economically suitable for irrigation.	No changes from Corridor/Route revision.	No changes from Corridor/Route revision.	No changes from Corridor/Route revision.	4.11
(4) Surface drainage patterns and ground water flow patterns.	No changes from Corridor/Route revision.	No changes from Corridor/Route revision.	No changes from Corridor/Route revision.	4.12 & 4.13
b. The impact upon:				
(1) Noise-sensitive land uses.	No changes from Corridor/Route revision.	No changes from Corridor/Route revision.	No changes from Corridor/Route revision.	4.6
(2) The visual effect on the adjacent area.	No changes from Corridor/Route revision.	No changes from Corridor/Route revision.	No changes from Corridor/Route revision. Use of double circuit 230/230-kV structures of comparable size to the original configuration would not change the visual effect of the project in this commercial/	4.7

Selection Criteria	Potential Adverse Effects			Section Addressed in Original Application
	Segment A	Segment B	Segment C	
			industrial area where electrical lines and substation facilities are present.	
(3) Extractive and storage resources.	No changes from Corridor/Route revision.	No changes from Corridor/Route revision.	No changes from Corridor/Route revision.	4.10
(4) Wetlands, woodlands, and wooded areas.	No changes from Corridor/Route revision.	No changes from Corridor/Route revision.	No changes from Corridor/Route revision.	4.3, 4.10, & 4.14
(5) Radio and television reception, and other communication or electronic control facilities.	No changes from Corridor/Route revision.	No changes from Corridor/Route revision.	No changes from Corridor/Route revision.	4.4
(6) Human health and safety.	No impacts to human health and safety are anticipated.	No impacts to human health and safety are anticipated.	No impacts to human health and safety are anticipated.	4.5
(7) Animal health and safety.	No changes from Corridor/Route revision.	No changes from Corridor/Route revision.	No changes from Corridor/Route revision.	4.10, 4.16, & 4.17
(8) Plant life.	No changes from Corridor/Route revision.	No changes from Corridor/Route revision.	No changes from Corridor/Route revision.	4.15

FACTORS CONSIDERED

North Dakota Century Code (NDCC) Section 49-22-09 of the North Dakota Energy Conversion and Transmission Facility Siting Act lists 11 factors to guide the Commission in evaluation of sites, corridors, and routes. The following sections address these factors, and where applicable, any changes from the original Application due to the Project Corridor/Route revision and structure configuration change.

- i. Available research and investigations relating to the effects of the location, construction, and operation of the proposed facility on public health and welfare, natural resources, and the environment
 - No changes from Corridor/Route revision or structure change.
- ii. The effects of the new energy conversion and transmission technologies and system designed to minimize adverse environmental effects
 - No changes from Corridor/Route revision or structure change.
- iii. The potential for beneficial uses of waste energy from a proposed energy conversion facility
 - No changes from Corridor/Route revision or structure change.
- iv. Adverse direct and indirect environmental effects which cannot be avoided should the proposed site or route be designated
 - No changes from Corridor/Route revision or structure change.
- v. Alternatives to the proposed site, corridor, or route which are developed during the hearing process and which minimize adverse effects
 - No changes from Corridor/Route revision or structure change.
- vi. Irreversible and ir retrievable commitments of natural resources should the proposed site, corridor, or route be designated
 - No changes from Corridor/Route revision or structure change.
- vii. The direct and indirect economic impacts of the proposed facility
 - No changes from Corridor/Route revision or structure change.
- viii. Existing plans of the state, local government, and private entities for other developments at or in the vicinity of the proposed site, corridor, or route
 - The use of the revised structure to a double circuit 230-kV configuration would help facilitate future Western expansion of its transmission system by providing a corridor/route for additional 230-kV connection to the Williston Substation.
- ix. The effect of the proposed site or route on existing scenic areas, historic sites and structures, and paleontological or archaeological sites
 - No changes from Corridor/Route revision or structure change.
- x. The effect of the proposed site or route on areas which are unique because of biological wealth or because they are habitats for rare and endangered species
 - No changes from Corridor/Route revision or structure change.
- xi. Problems raised by federal agencies, other state agencies, and local entities
 - No changes from Corridor/Route revision or structure change.

CONCLUSION

As previously stated, the Corridor/Route and structure type revisions presented in Figures 1 – 3 (attached) do not alter the information presented in the original January 2012 Application based on a review of exclusion areas, avoidance criteria, selection criteria, and the factors to be considered in NDCC Section 49-22-09 of the North Dakota Energy Conversion and Transmission Facility Siting Act. The Corridor/Route and structure type revisions are minor and typical of the progression of a linear project.

I appreciate the opportunity to provide the Commission with a review of the revisions to this Corridor/Route. If there are any additional questions or concerns regarding this revision, please contact me at 701-557-5635.

Sincerely,



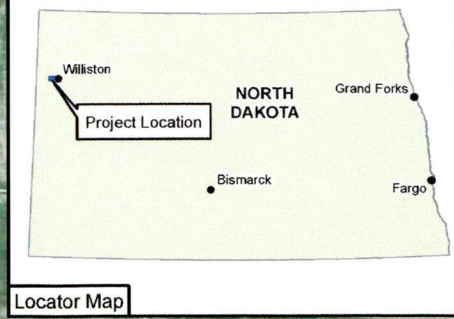
Cris Miller
Senior Environmental Project Specialist

/ser

Attachments

- Figure 1 – Route Alignment
- Figure 2 – Corridor/Route Revision
- Figure 3 – 230/230-kV Structure
- NDSHPO Concurrence Letter

Path: R:\Basin\61495_AVS_345\GIS\DATA\Files\ArcDoc\Basin
COPYRIGHT © 2015 BURNS & MCDONNELL ENGINEERING
Service Layer Credits: Source: Esri, DigitalGlobe, GeoEye, Earthstar, GEBCO, Swire, CNES/Airbus DS, USDA, USGS, AEX, Geomatics, and the GIS User Community



Locator Map

— Original Corridor/Route Alignment ▲ Substation
— Corridor/Route Revision

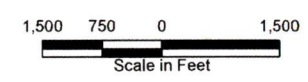
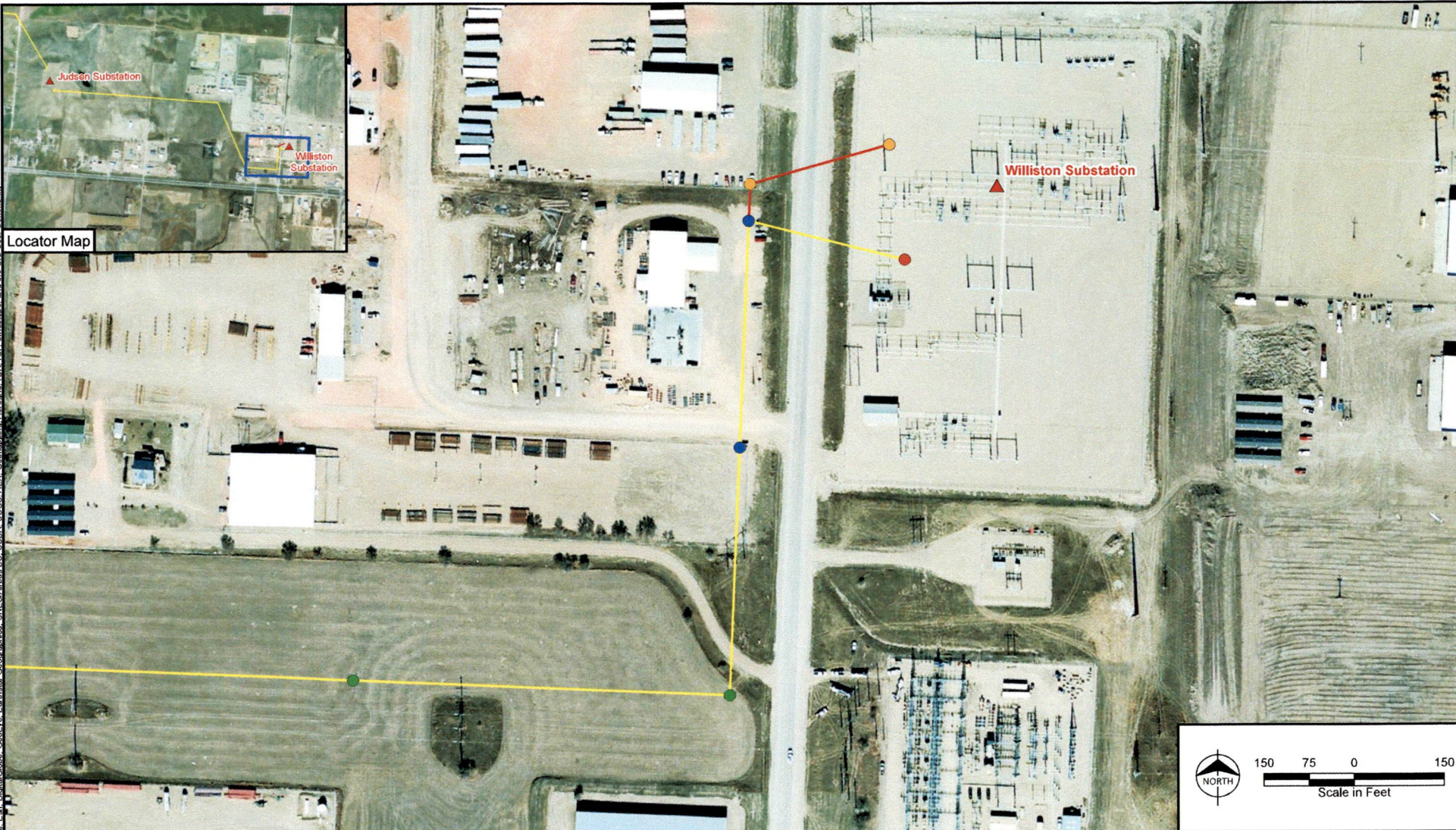


Figure 1
Williston Tie-In Project
Route Alignment
Basin Electric Power Cooperative

n:_Trk_in_Amendment_Figure2.mxd kasamuelson 6/17/2015
 COPYRIGHT © 2015 BURNS & MCDONNELL ENGINEERING
 Service Layer Credits: Source: Esri, DigitalGlobe, GeoEye, Earthstar, CNES/Airbus DS, USDA, USGS, AeroX, GeoEye, IGN, IPC, swisstopo, and the GIS User Community



- Original Corridor/Route Alignment
- Corridor/Route Revision
- ▲ Substation
- Original Route Structures Single Circuit 230 kV
- Double Circuit 230 kV/115 kV
- Double Circuit 230 kV/230 kV
- Single Circuit 230 kV

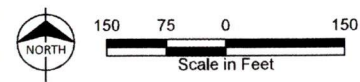
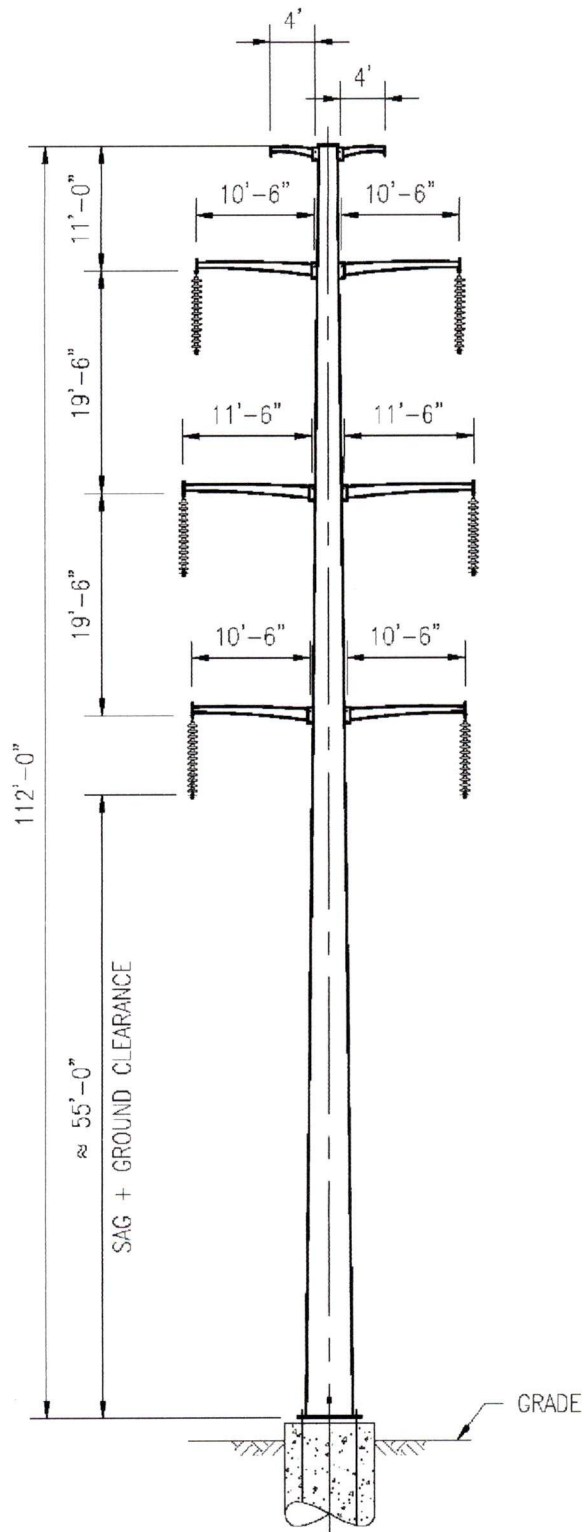


Figure 2
Williston Tie-In Project
Route Revision Detail
 Basin Electric Power Cooperative



**BASIC 230/230KV
DOUBLE CIRCUIT STRUCTURE**
AVERAGE SPAN $\approx 800'$

Figure 3
Williston Tie-In Project
Proposed 230/230 kV Structure

Basin Electric
Power Cooperative



**STATE
HISTORICAL
SOCIETY**
OF NORTH DAKOTA

Jack Dalrymple
Governor of North Dakota

**North Dakota
State Historical Board**

Calvin Grinnell
New Town - President

A. Ruric Todd III
*Jamestown - Vice
President*

Margaret Puetz
Bismarck - Secretary

Albert I. Berger
Grand Forks

Gereld Gerntholz
Valley City

Diane K. Larson
Bismarck

Chester E Nelson, Jr.
Bismarck

Sara Otte Coleman
*Director
Tourism Division*

Kelly Schmidt
State Treasurer

Alvin A. Jaeger
Secretary of State

Mark Zimmerman
*Director
Parks and Recreation
Department*

Grant Levi
*Director
Department of
Transportation*

Claudia J. Berg
Director

*Accredited by the
American Alliance
of Museums since 1986*

May 26, 2015

Jennifer L. Harty
Metcalf Archaeological Consultants, Inc.
PO Box 2154
Bismarck, ND 50502-2154

**NDSHPO REF.: 11-2553a WAPA/PSC Basin Electric Power Cooperative's
Williston Tie Transmission Project [Williston Substation link redesign],
Williams County, North Dakota
[T 154N R102W Section 24; T 154N R101W Section 19]**

Dear Jennifer:

We have reviewed project correspondence and documentation for 11-2553a WAPA/PSC "Basin Electric Power Cooperative's Williston Tie Transmission Project [Williston Substation link redesign], Williams County, North Dakota," prepared by Metcalf Archaeological Consultants, Inc., (May 2015) and find it acceptable. We concur that no survey is warranted and also concur with "No Historic Properties Affected" and "No Significant Sites Affected" determinations provided the project is of the nature started and it takes place in the location plotted in the project documentation.

Thank you for the opportunity to review the project. If you have questions please contact either Paul Picha ppicha@nd.gov at (701) 328-3574 or Susan Quinnell squinnell@nd.gov at (701) 328-3576.

Sincerely,

Claudia J. Berg
State Historic Preservation Officer (North Dakota)
and
Director, State Historical Society of North Dakota

c: Cris Miller, Basin Electric Power Cooperative
c: David Kluth, FPO, WAPA