

**STATE OF NORTH DAKOTA
PUBLIC SERVICE COMMISSION**

**Basin Electric Power Cooperative
345/230 kV Transmission Line – Williams County
Siting Application**

Case No. PU-11-692

**NOTICE OF OPPORTUNITY FOR HEARING
July 8, 2015**

On May 16, 2012, the Commission issued Corridor Certificate No. 134 and Route Permit No. 145 to Basin Electric Power Cooperative authorizing construction of approximately 2.1 miles of 230 kV electric transmission line and approximately 1.6 miles of 345 kV electric transmission line and associated facilities in Williams County, North Dakota.

On June 23, 2015, Basin Electric filed an amendment requesting minor corridor and route modifications to facilitate connection of the project into the Western Area Power Administration's Williston Substation as indicated on the attached map. The Commission finds Basin Electric's amendment complete. The issues to be considered in this matter are:

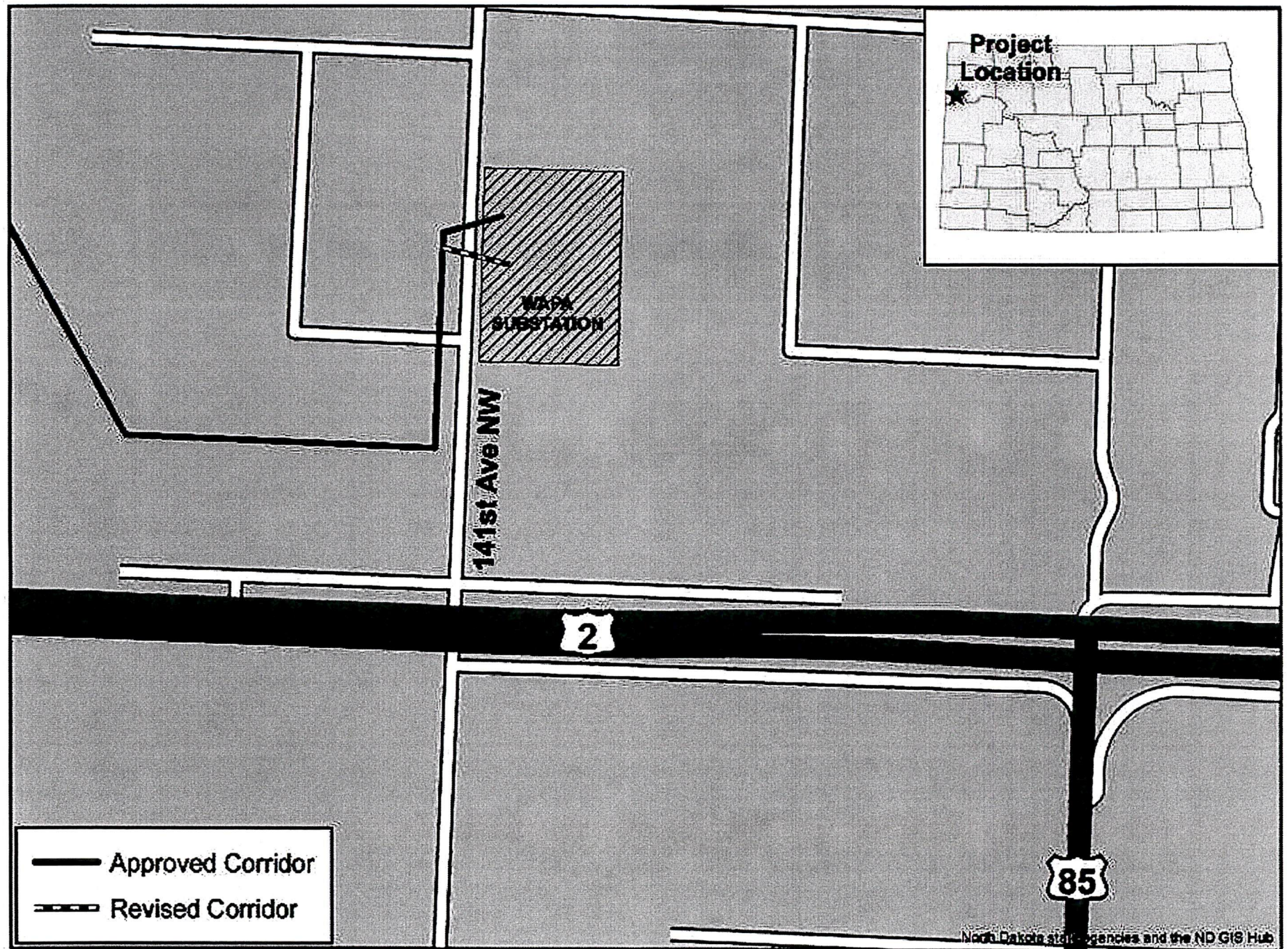
1. Will the location, construction, and operation of the proposed amended facilities produce minimal adverse effects on the environment and upon the welfare of the citizens of North Dakota?
2. Are the proposed amended facilities compatible with the environmental preservation and the efficient use of resources?
3. Will the proposed amended facility locations minimize adverse human and environmental impact while ensuring continuing system reliability and integrity and ensuring that energy needs are met and fulfilled in an orderly and timely fashion?

Those interested are invited to comment in writing. Persons desiring a hearing must file a written request identifying their interest in the proceedings and the reasons for requesting a hearing. Comments and requests for hearing must be received by August 14, 2015. If deemed appropriate, the Commission can determine the matter without a hearing.

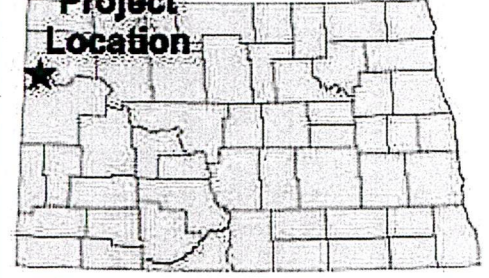
For more information contact the Public Service Commission, State Capitol, Bismarck, North Dakota 58505, 701-328-2400; or Relay North Dakota, 1-800-366-6888 TTY. If you require any auxiliary aids or services, such as readers, signers, or Braille materials, please notify the Commission.

PUBLIC SERVICE COMMISSION


Randy Christmann **Julie Fedorchak** **Brian P. Kalk**
Commissioner **Chairman** **Commissioner**



Project Location



**NADA
SUBSTATION**

141st Ave NW

2

85

- Approved Corridor
- - - Revised Corridor