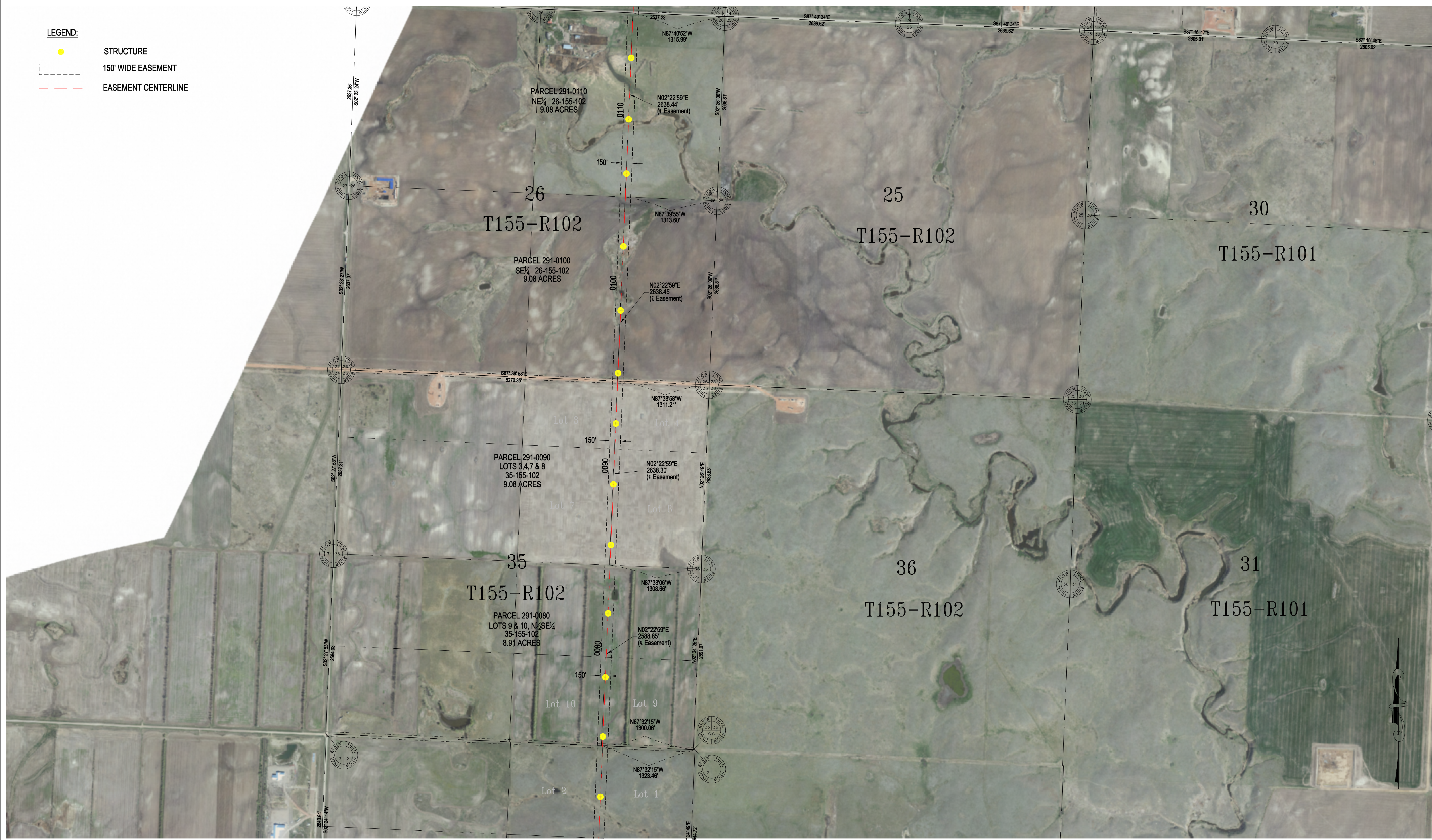


- LEGEND:**
- STRUCTURE
 - 150' WIDE EASEMENT
 - EASEMENT CENTERLINE



Basis of Bearing is NAD83 ND State Plane North Zone - International Feet. All distances are Ground Distance. Combined scale factor = 0.999840332

SEC. 26 & 35 - T155N - R102W
WILLIAMS COUNTY, NORTH DAKOTA

NOTE:
STRUCTURE PLACEMENT AS OF 8-7-2013

PSC SUBMITTAL FOR LINE 291
JUDSON TO TANDE
345kV TRANSMISSION LINE

**BASIN ELECTRIC
POWER COOPERATIVE**
A Touchstone Energy Cooperative