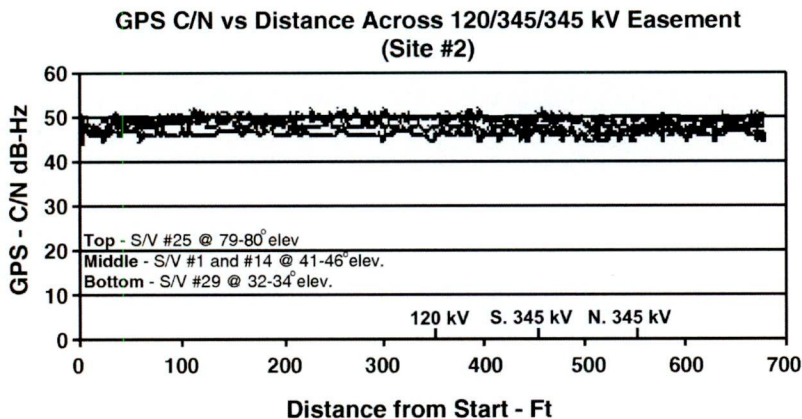
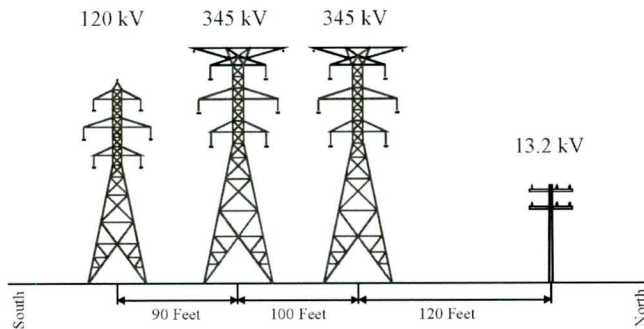
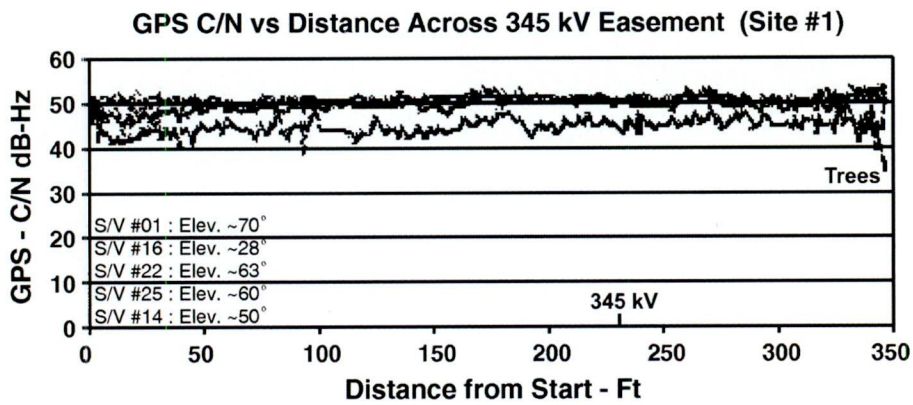
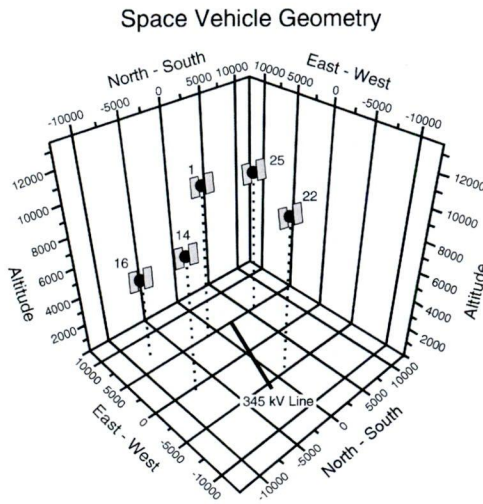


# GPS Signal Strength Measurements

**EXHIBIT**  
24



54 PU-11-696 Filed: 10/14/2013 Pages: 1  
 Exhibit 24 of September 4, 5, and 12, 2013 formal hearing

Basin Electric Power Cooperative

GPS satellite signal measurements driving under 345 kV lines. GPS signal strength was tracked using 5 GPS satellites. The GPS signal strength did not change while driving under the 345 kV lines.