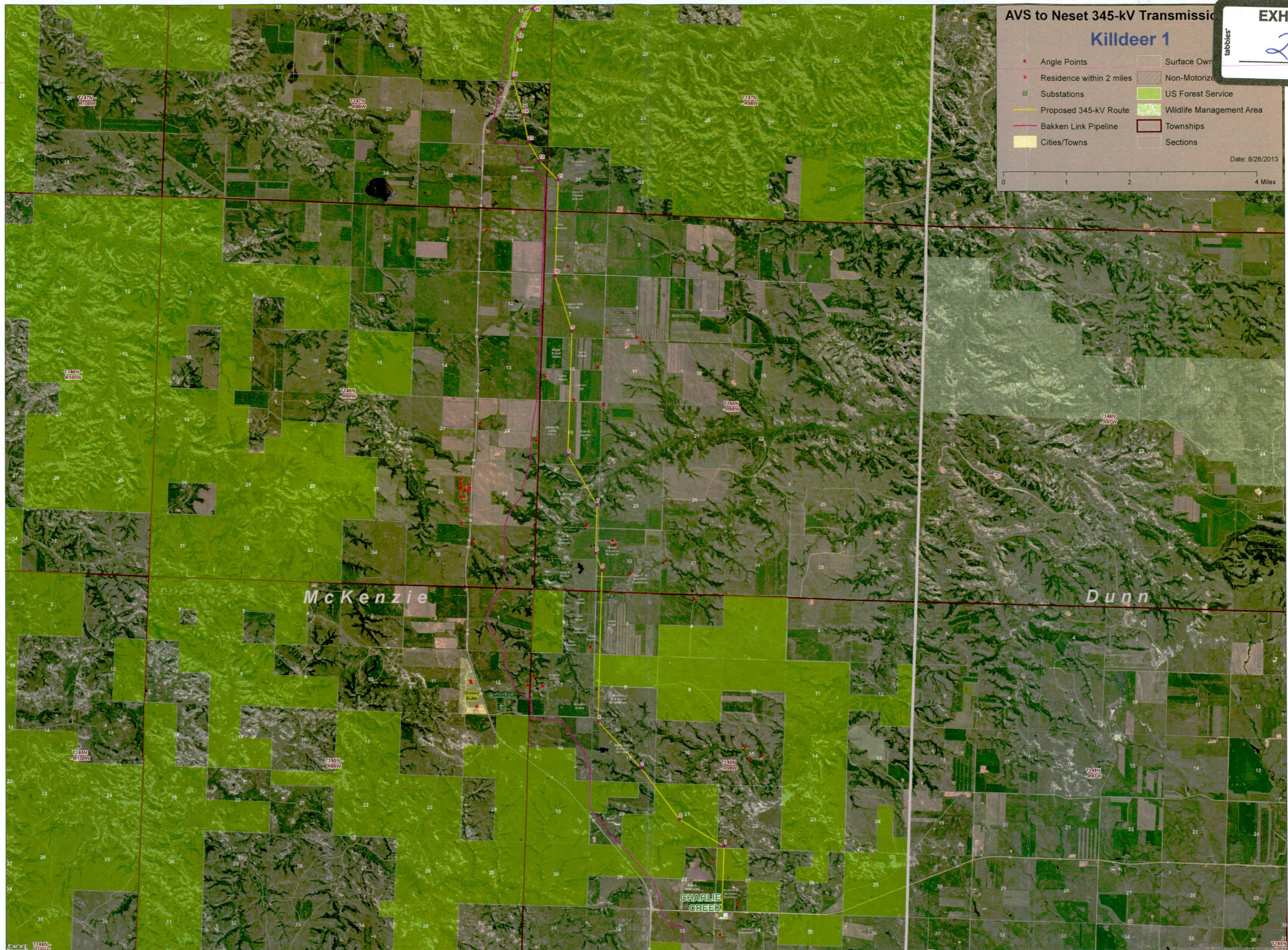
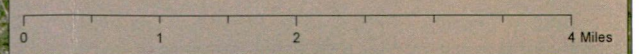


Kildeer 1

EXHIBIT
29

- Angle Points
- Residence within 2 miles
- Substations
- Proposed 345-kV Route
- Bakken Link Pipeline
- Cities/Towns
- Surface Owner
- Non-Motorized
- US Forest Service
- Wildlife Management Area
- Townships
- Sections

Date: 8/28/2013



McKenzie

Dunn

Grassy Butte Cemetery

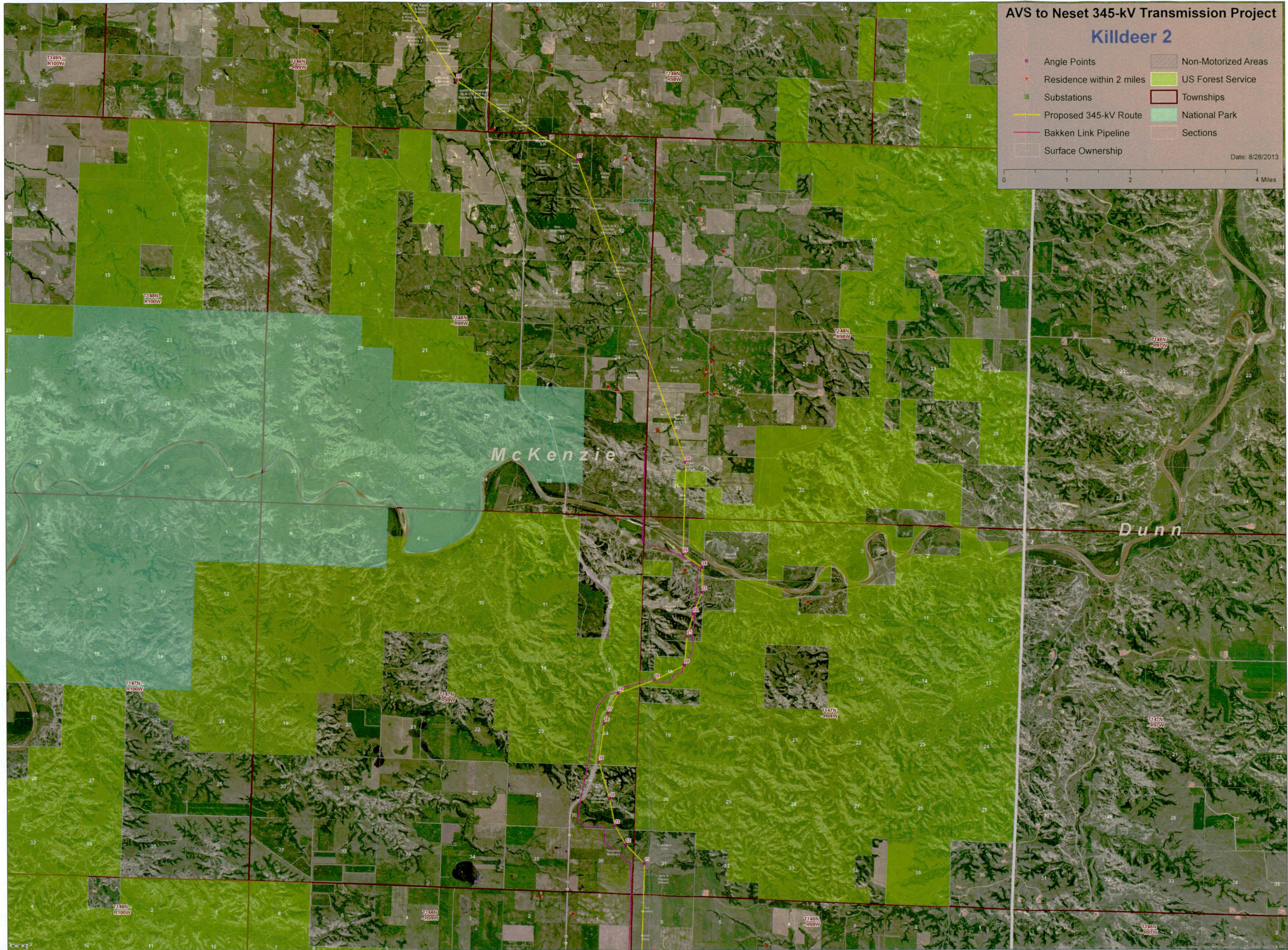
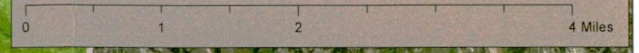
CHARLIE CREEK

AVS to Naset 345-kV Transmission Project

Killdeer 2

Angle Points	Non-Motorized Areas
Residence within 2 miles	US Forest Service
Substations	Townships
Proposed 345-kV Route	National Park
Bakken Link Pipeline	Sections
Surface Ownership	

Date: 8/28/2013

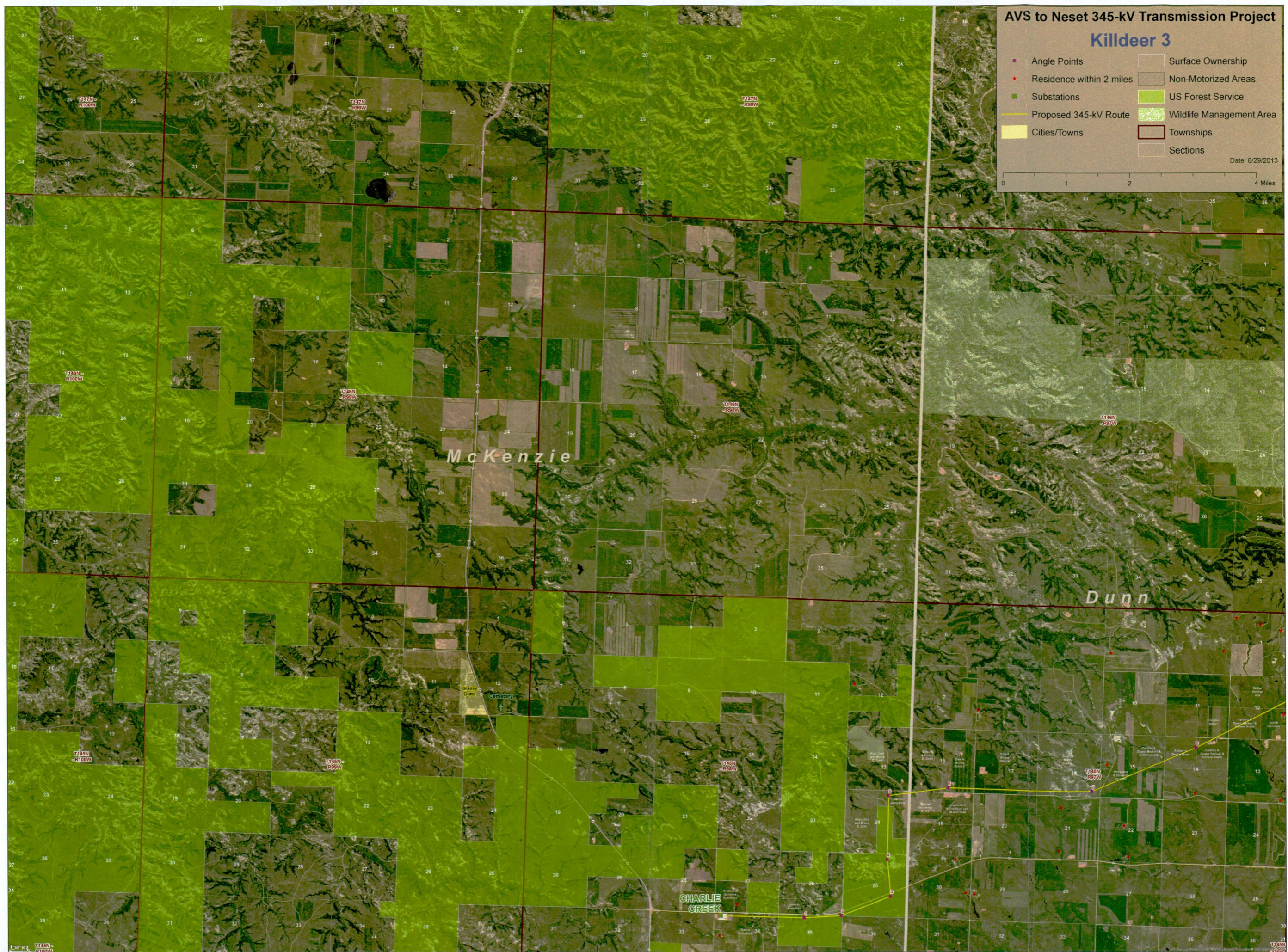
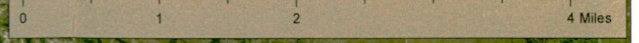


AVS to Neseet 345-kV Transmission Project

Kildeer 3

- Angle Points
- Residence within 2 miles
- Substations
- Proposed 345-kV Route
- Cities/Towns
- Surface Ownership
- Non-Motorized Areas
- US Forest Service
- Wildlife Management Area
- Townships
- Sections

Date: 8/29/2013



McKenzie

Dunn

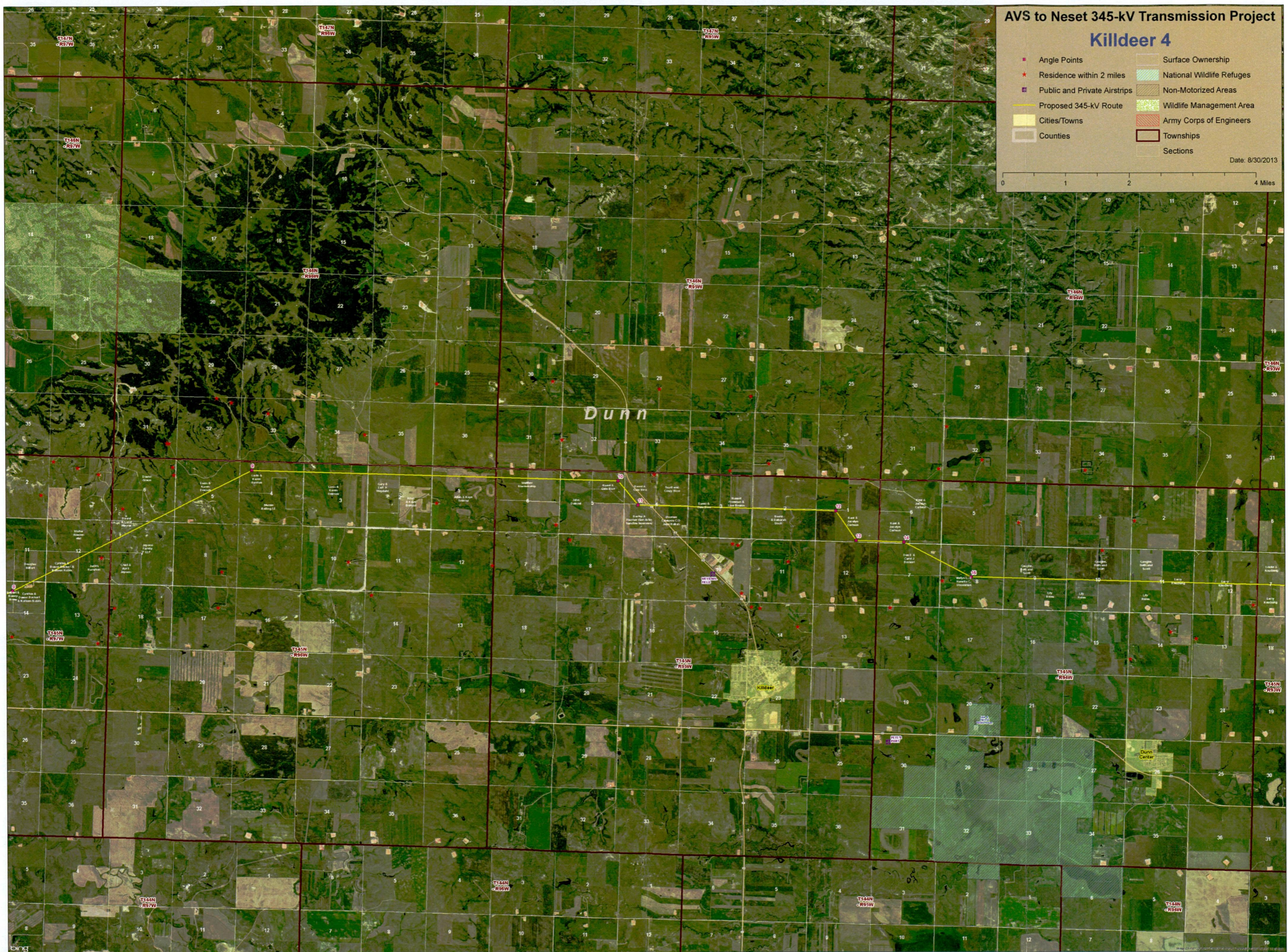
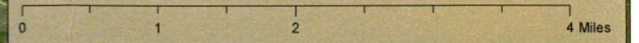
CHARLIE CREEK

Grassy Butte Cemetery

Kildeer 4

- Angle Points
- Residence within 2 miles
- Public and Private Airstrips
- Proposed 345-kV Route
- Cities/Towns
- Counties
- Surface Ownership
- National Wildlife Refuges
- Non-Motorized Areas
- Wildlife Management Area
- Army Corps of Engineers
- Townships
- Sections

Date: 8/30/2013

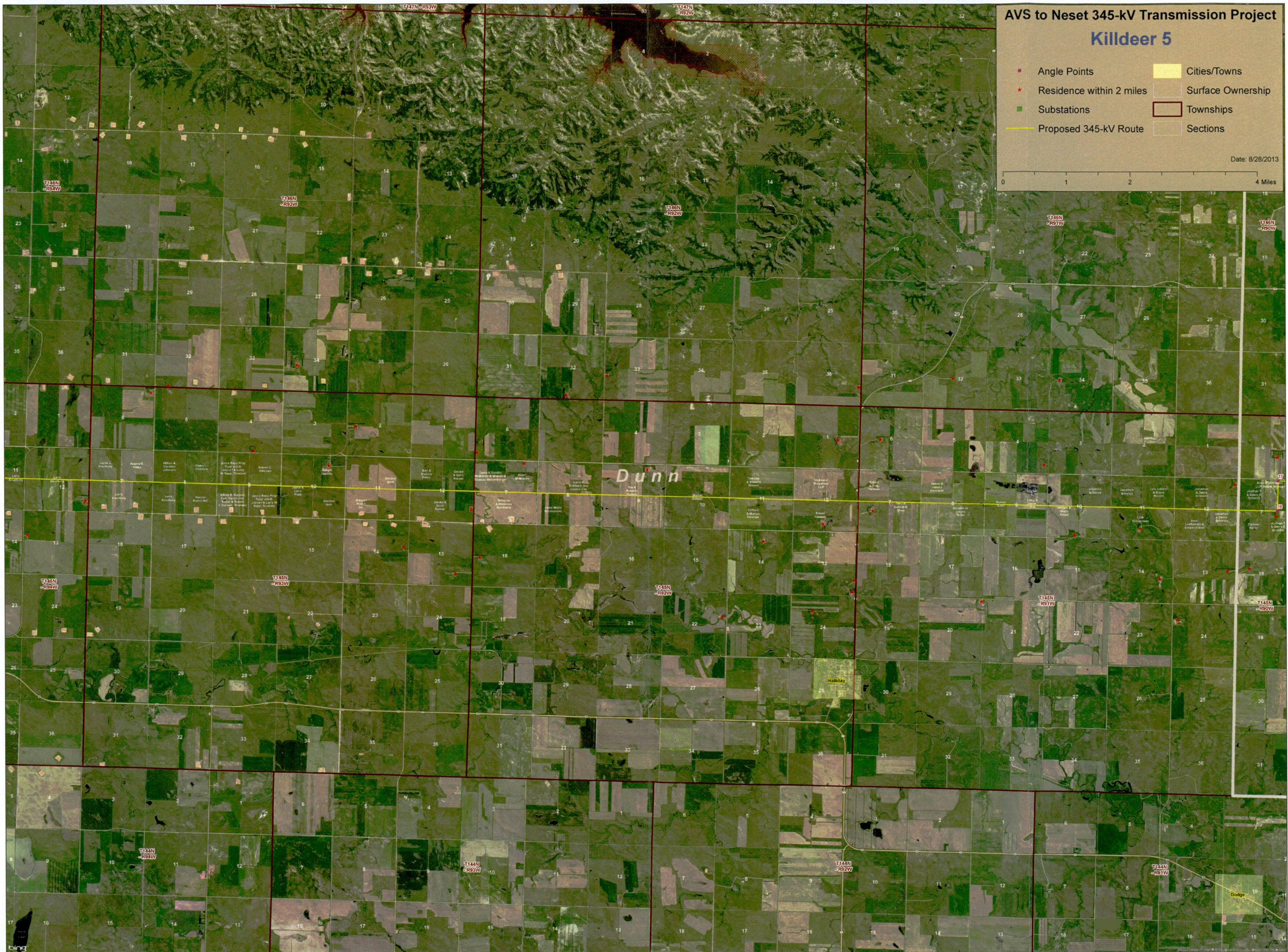
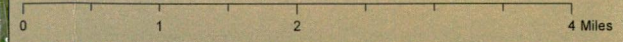


AVS to Nenet 345-kV Transmission Project

Killdeer 5

- Angle Points
- ★ Residence within 2 miles
- Substations
- Proposed 345-kV Route
- Cities/Towns
- Surface Ownership
- Townships
- Sections

Date: 8/28/2013



Dunn

Hamlet

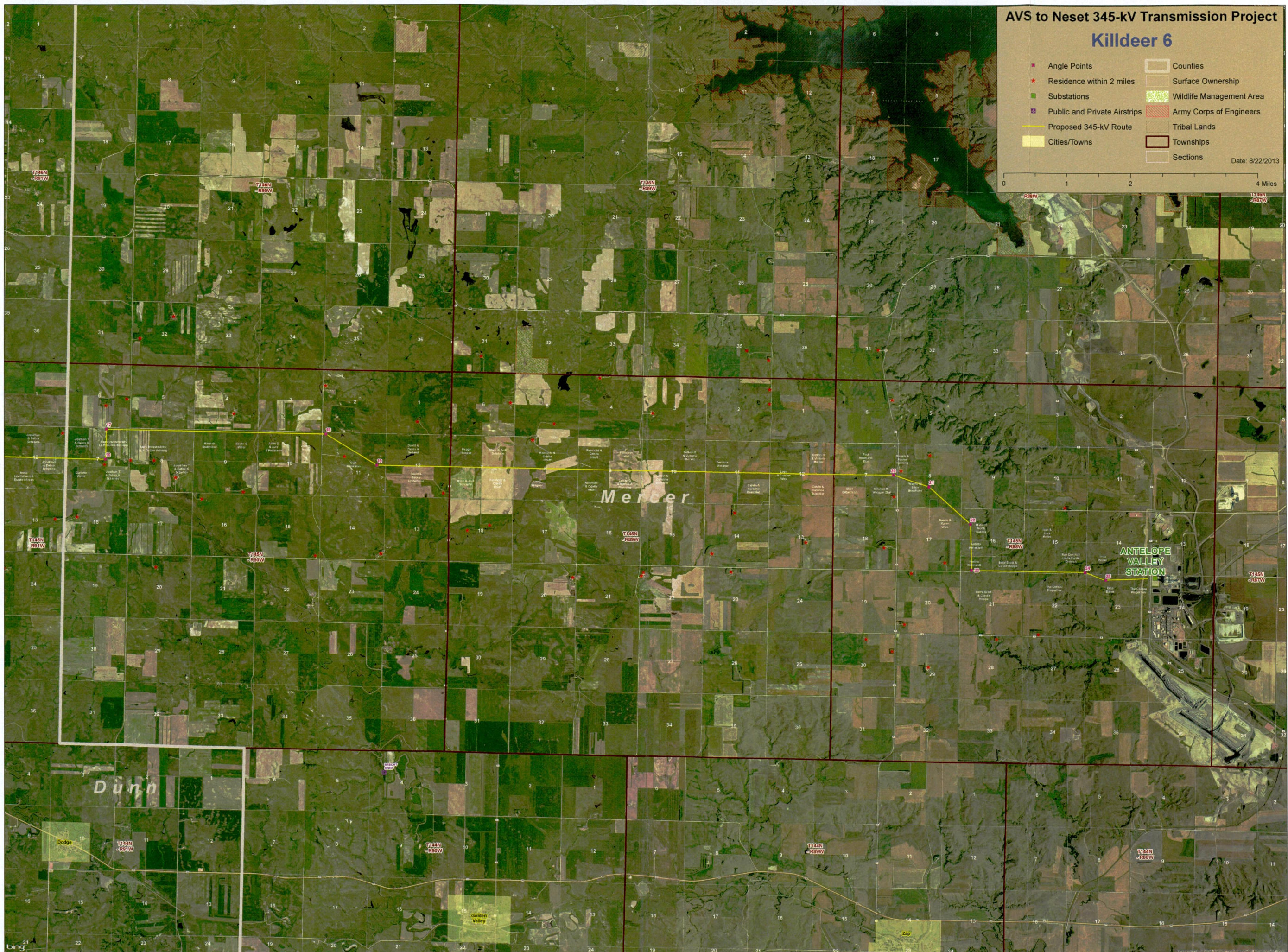
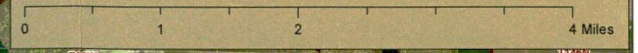
Dodge

AVS to Nenet 345-kV Transmission Project

Killdeer 6

■ Angle Points	□ Counties
★ Residence within 2 miles	□ Surface Ownership
■ Substations	■ Wildlife Management Area
■ Public and Private Airstrips	■ Army Corps of Engineers
— Proposed 345-kV Route	■ Tribal Lands
■ Cities/Towns	■ Townships
	■ Sections

Date: 8/22/2013



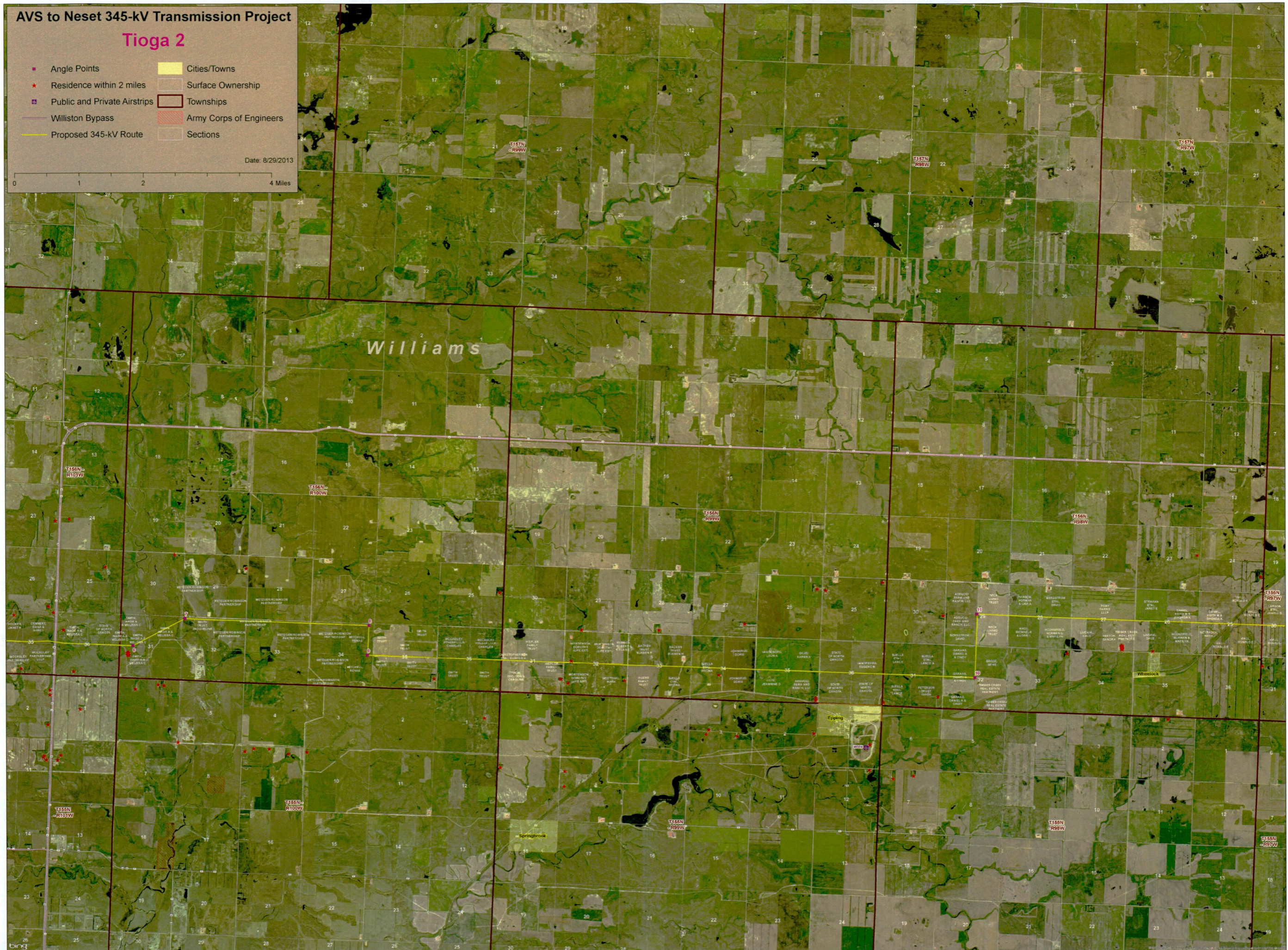
AVS to Naset 345-kV Transmission Project

Tioga 2

- Angle Points
- ★ Residence within 2 miles
- ✈ Public and Private Airstrips
- Williston Bypass
- Proposed 345-kV Route
- Cities/Towns
- Surface Ownership
- Townships
- Army Corps of Engineers
- Sections

Date: 8/29/2013

0 1 2 4 Miles

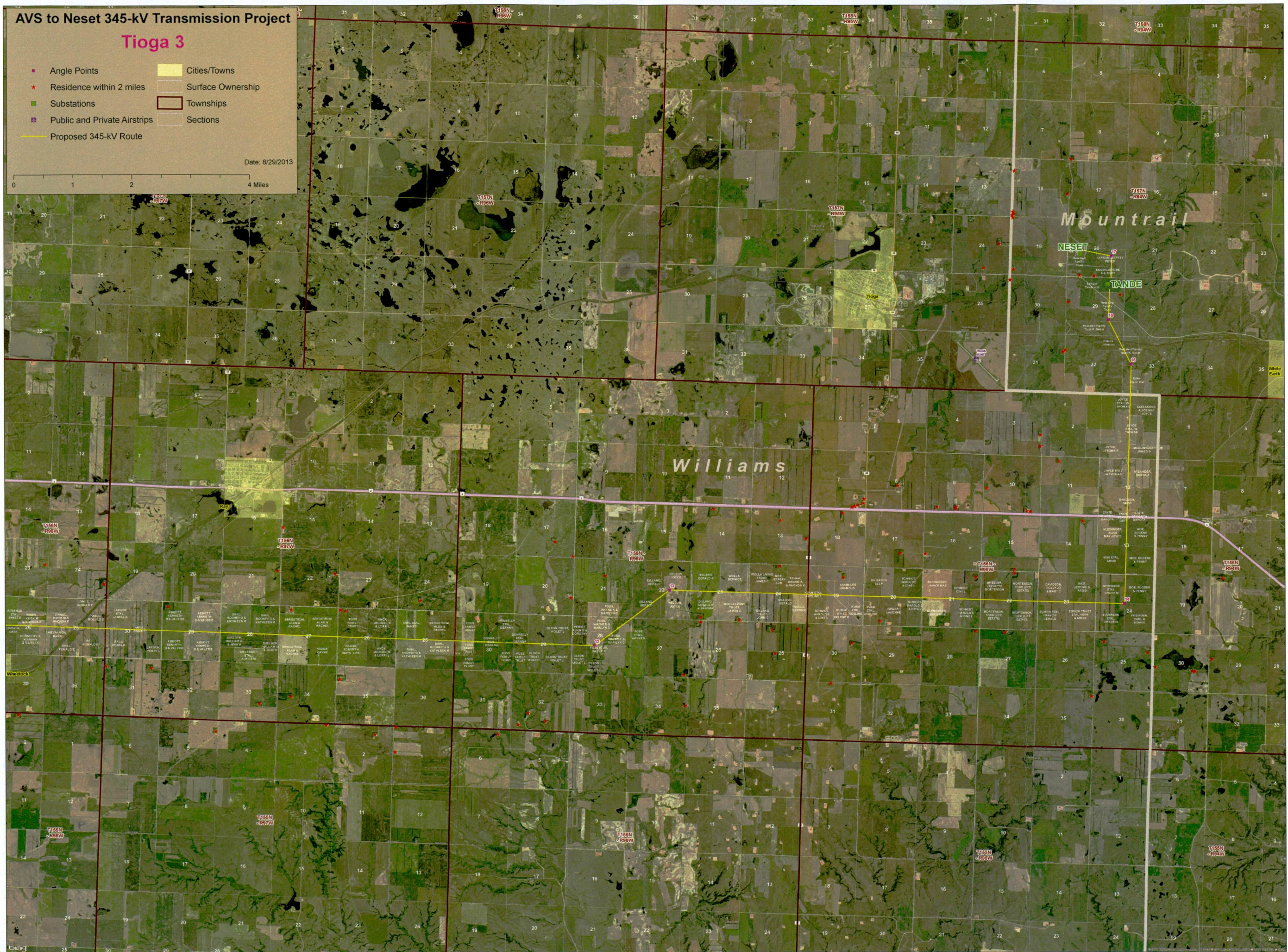


AVS to Neseet 345-kV Transmission Project

Tioga 3

- Angle Points
- ★ Residence within 2 miles
- Substations
- Public and Private Airstrips
- Proposed 345-kV Route
- Cities/Towns
- Surface Ownership
- Townships
- Sections

Date: 8/29/2013



Mountrail

Williams

Map labels for land ownership and other features:

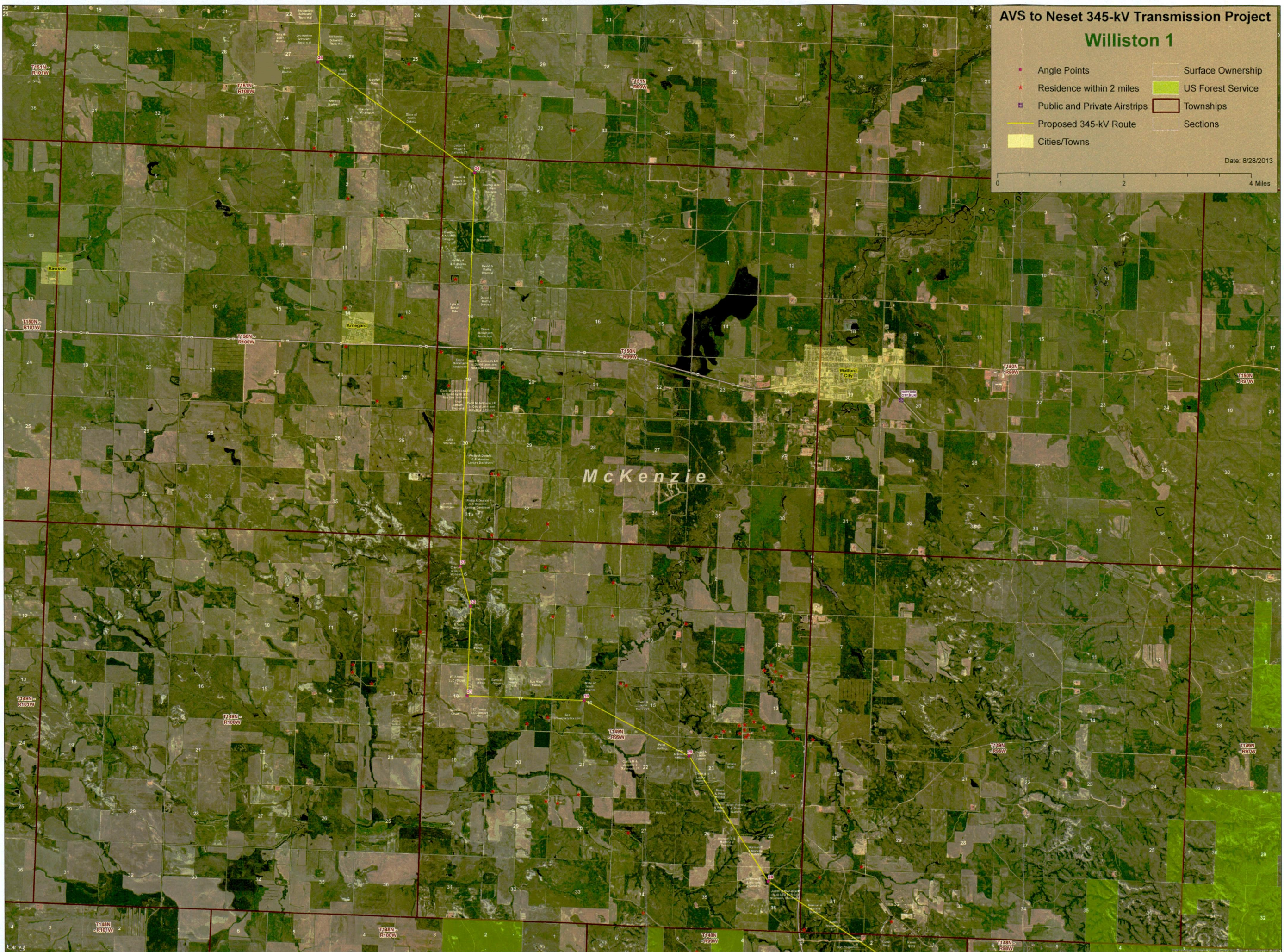
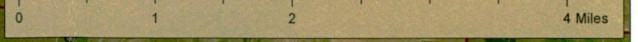
- NESET
- TANDE
- White Earth
- T158N R96W
- T158N R97W
- T158N R98W
- T158N R99W
- T158N R100W
- T158N R101W
- T158N R102W
- T158N R103W
- T158N R104W
- T158N R105W
- T158N R106W
- T158N R107W
- T158N R108W
- T158N R109W
- T158N R110W
- T158N R111W
- T158N R112W
- T158N R113W
- T158N R114W
- T158N R115W
- T158N R116W
- T158N R117W
- T158N R118W
- T158N R119W
- T158N R120W
- T158N R121W
- T158N R122W
- T158N R123W
- T158N R124W
- T158N R125W
- T158N R126W
- T158N R127W
- T158N R128W
- T158N R129W
- T158N R130W
- T158N R131W
- T158N R132W
- T158N R133W
- T158N R134W
- T158N R135W
- T158N R136W
- T158N R137W
- T158N R138W
- T158N R139W
- T158N R140W
- T158N R141W
- T158N R142W
- T158N R143W
- T158N R144W
- T158N R145W
- T158N R146W
- T158N R147W
- T158N R148W
- T158N R149W
- T158N R150W
- T158N R151W
- T158N R152W
- T158N R153W
- T158N R154W
- T158N R155W
- T158N R156W
- T158N R157W
- T158N R158W
- T158N R159W
- T158N R160W
- T158N R161W
- T158N R162W
- T158N R163W
- T158N R164W
- T158N R165W
- T158N R166W
- T158N R167W
- T158N R168W
- T158N R169W
- T158N R170W
- T158N R171W
- T158N R172W
- T158N R173W
- T158N R174W
- T158N R175W
- T158N R176W
- T158N R177W
- T158N R178W
- T158N R179W
- T158N R180W
- T158N R181W
- T158N R182W
- T158N R183W
- T158N R184W
- T158N R185W
- T158N R186W
- T158N R187W
- T158N R188W
- T158N R189W
- T158N R190W
- T158N R191W
- T158N R192W
- T158N R193W
- T158N R194W
- T158N R195W
- T158N R196W
- T158N R197W
- T158N R198W
- T158N R199W
- T158N R200W
- T158N R201W
- T158N R202W
- T158N R203W
- T158N R204W
- T158N R205W
- T158N R206W
- T158N R207W
- T158N R208W
- T158N R209W
- T158N R210W
- T158N R211W
- T158N R212W
- T158N R213W
- T158N R214W
- T158N R215W
- T158N R216W
- T158N R217W
- T158N R218W
- T158N R219W
- T158N R220W
- T158N R221W
- T158N R222W
- T158N R223W
- T158N R224W
- T158N R225W
- T158N R226W
- T158N R227W
- T158N R228W
- T158N R229W
- T158N R230W
- T158N R231W
- T158N R232W
- T158N R233W
- T158N R234W
- T158N R235W
- T158N R236W
- T158N R237W
- T158N R238W
- T158N R239W
- T158N R240W
- T158N R241W
- T158N R242W
- T158N R243W
- T158N R244W
- T158N R245W
- T158N R246W
- T158N R247W
- T158N R248W
- T158N R249W
- T158N R250W
- T158N R251W
- T158N R252W
- T158N R253W
- T158N R254W
- T158N R255W
- T158N R256W
- T158N R257W
- T158N R258W
- T158N R259W
- T158N R260W
- T158N R261W
- T158N R262W
- T158N R263W
- T158N R264W
- T158N R265W
- T158N R266W
- T158N R267W
- T158N R268W
- T158N R269W
- T158N R270W
- T158N R271W
- T158N R272W
- T158N R273W
- T158N R274W
- T158N R275W
- T158N R276W
- T158N R277W
- T158N R278W
- T158N R279W
- T158N R280W
- T158N R281W
- T158N R282W
- T158N R283W
- T158N R284W
- T158N R285W
- T158N R286W
- T158N R287W
- T158N R288W
- T158N R289W
- T158N R290W
- T158N R291W
- T158N R292W
- T158N R293W
- T158N R294W
- T158N R295W
- T158N R296W
- T158N R297W
- T158N R298W
- T158N R299W
- T158N R300W

AVS to Nenet 345-kV Transmission Project

Williston 1

- Angle Points
- ★ Residence within 2 miles
- ✈ Public and Private Airstrips
- Proposed 345-kV Route
- Cities/Towns
- Surface Ownership
- US Forest Service
- Townships
- Sections

Date: 8/28/2013



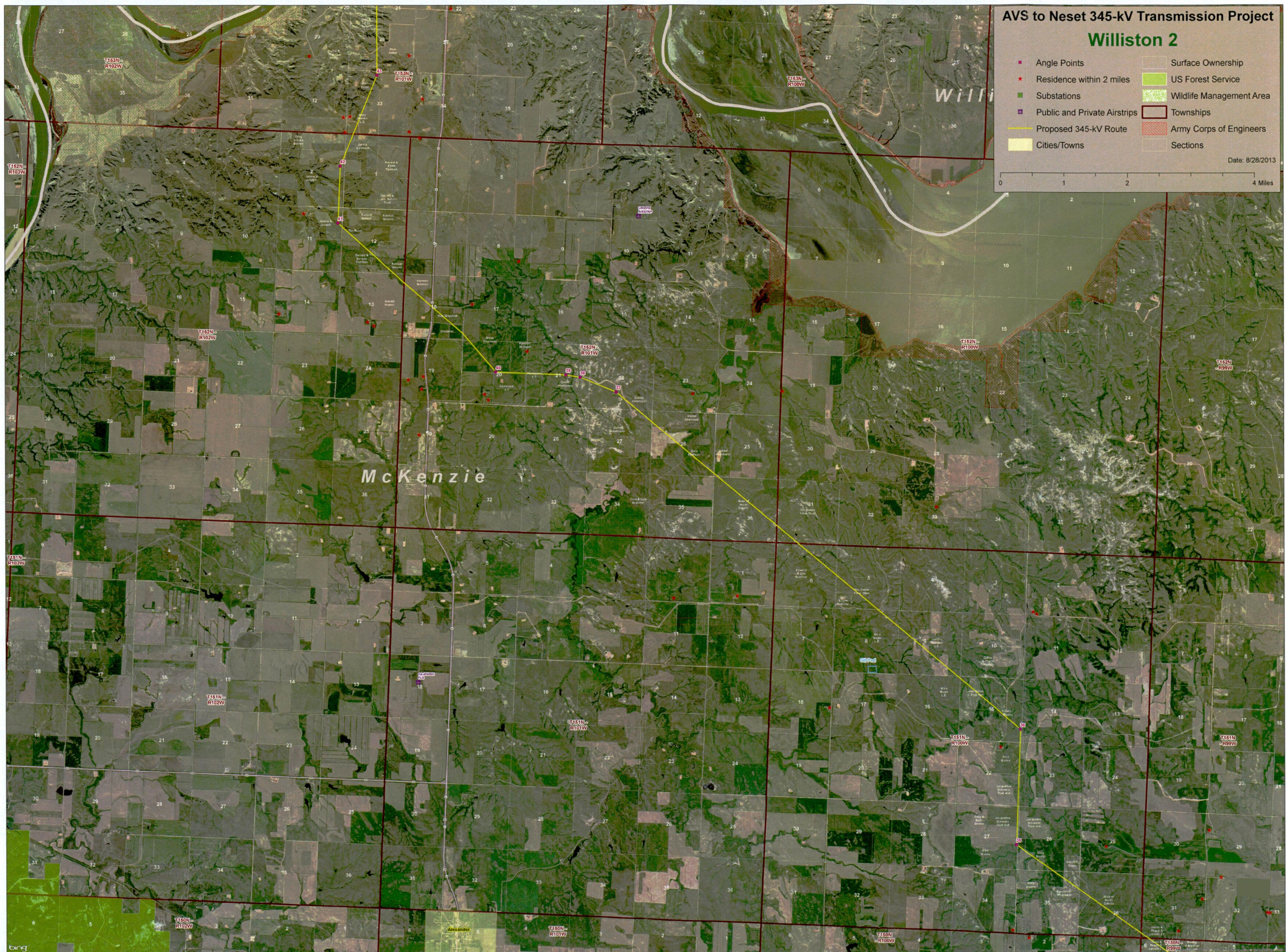
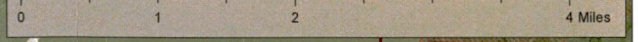
McKenzie

AVS to Nenet 345-kV Transmission Project

Williston 2

- Angle Points
- ★ Residence within 2 miles
- Substations
- Public and Private Airstrips
- Proposed 345-kV Route
- Cities/Towns
- Surface Ownership
- US Forest Service
- Wildlife Management Area
- Townships
- Army Corps of Engineers
- Sections

Date: 8/28/2013



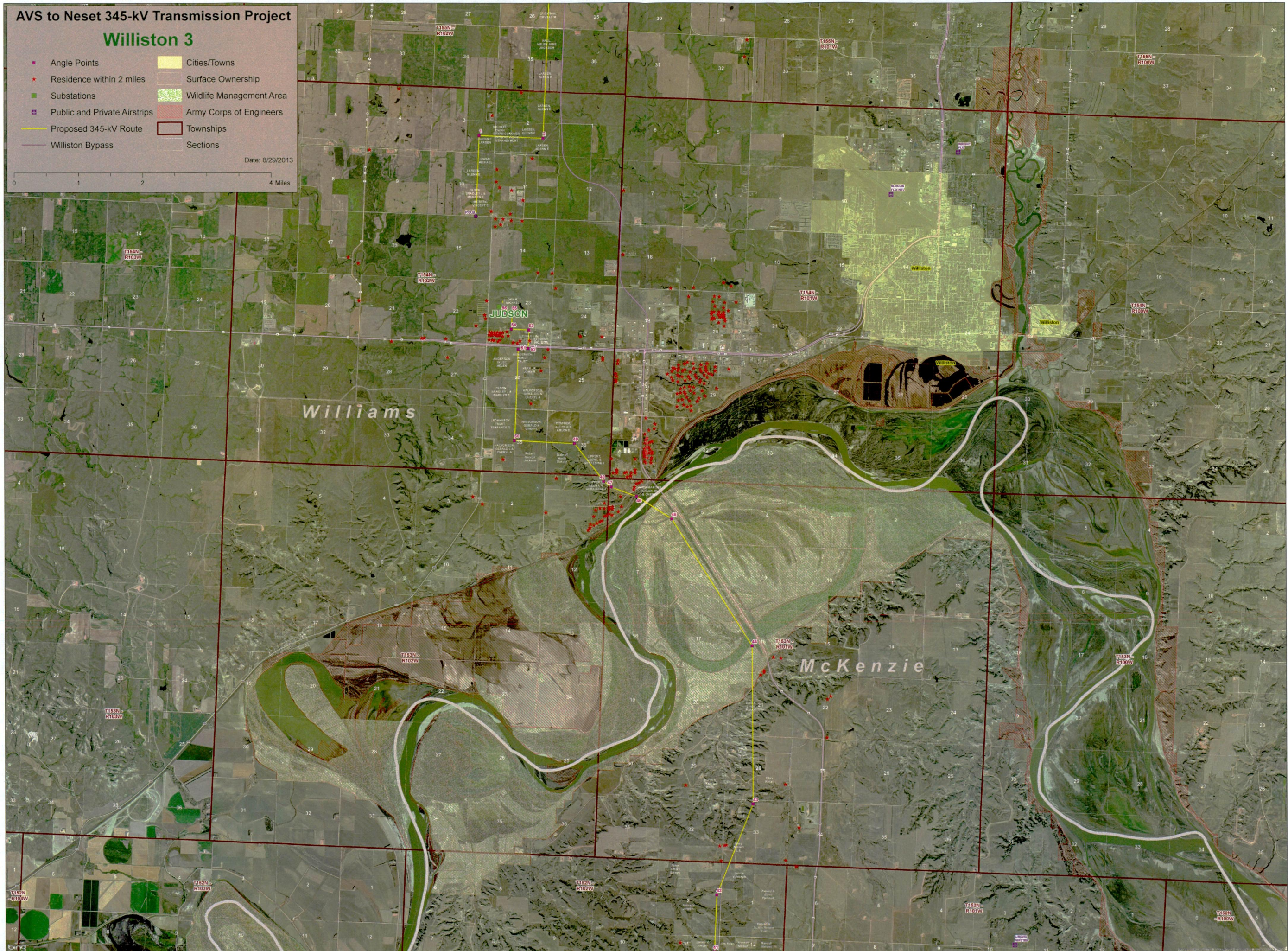
AVS to Naset 345-kV Transmission Project

Williston 3

- Angle Points
- ★ Residence within 2 miles
- Substations
- Public and Private Airstrips
- Proposed 345-kV Route
- Williston Bypass
- Cities/Towns
- Surface Ownership
- Wildlife Management Area
- Army Corps of Engineers
- Townships
- Sections

Date: 8/29/2013

0 1 2 4 Miles

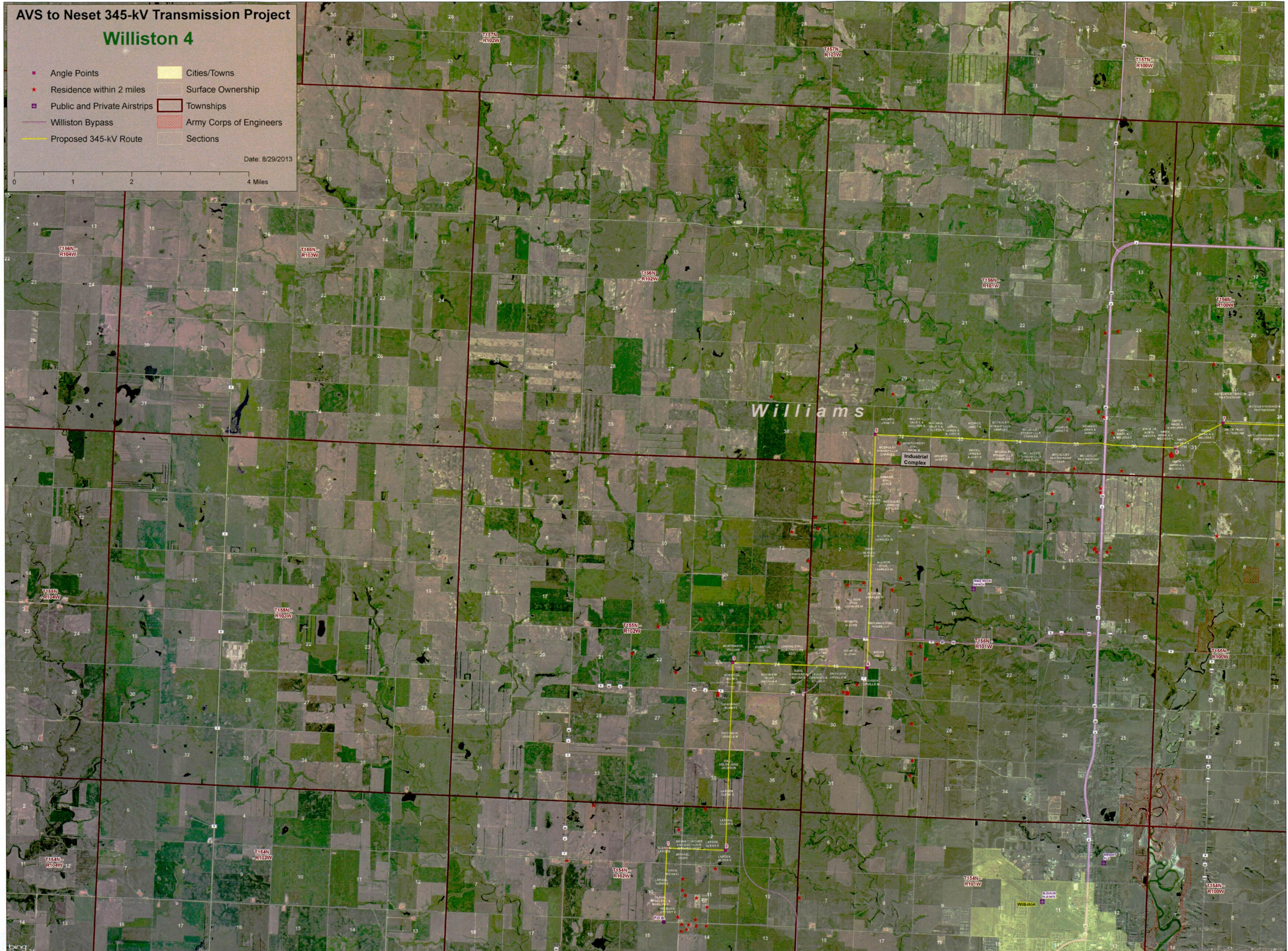
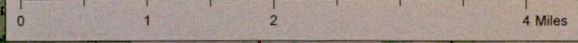


AVS to Neset 345-kV Transmission Project

Williston 4

- Angle Points
- ★ Residence within 2 miles
- ✈ Public and Private Airstrips
- Williston Bypass
- Proposed 345-kV Route
- Cities/Towns
- Surface Ownership
- Townships
- Army Corps of Engineers
- Sections

Date: 8/29/2013

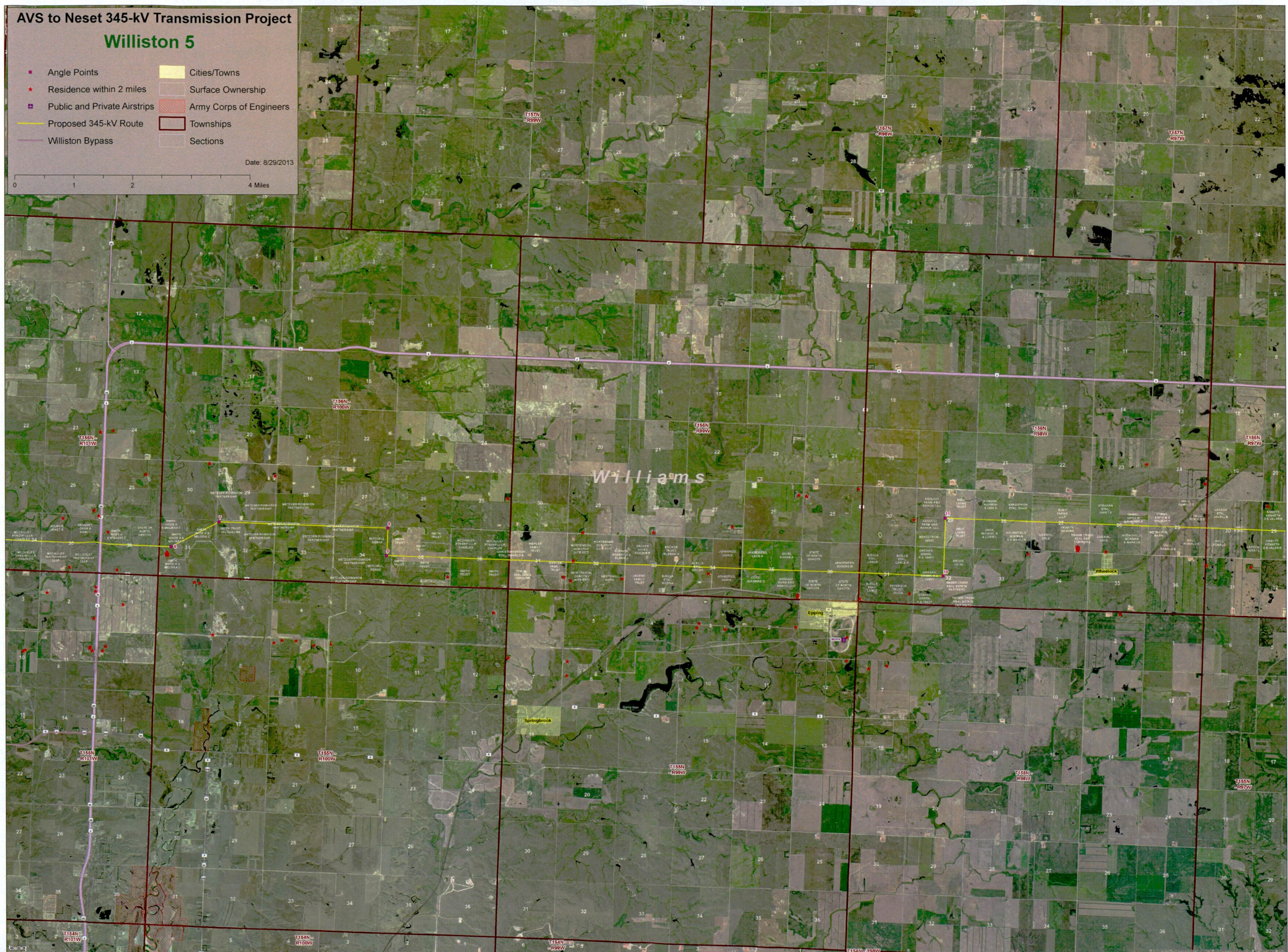
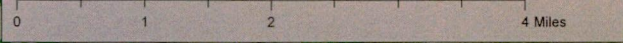


AVS to Nenet 345-kV Transmission Project

Williston 5

- Angle Points
- ★ Residence within 2 miles
- ✈ Public and Private Airstrips
- Proposed 345-kV Route
- Williston Bypass
- Cities/Towns
- Surface Ownership
- Army Corps of Engineers
- Townships
- Sections

Date: 8/29/2013



Williams

Epping

Springbrook

Wheelock