

# **BASIN ELECTRIC POWER COOPERATIVE**

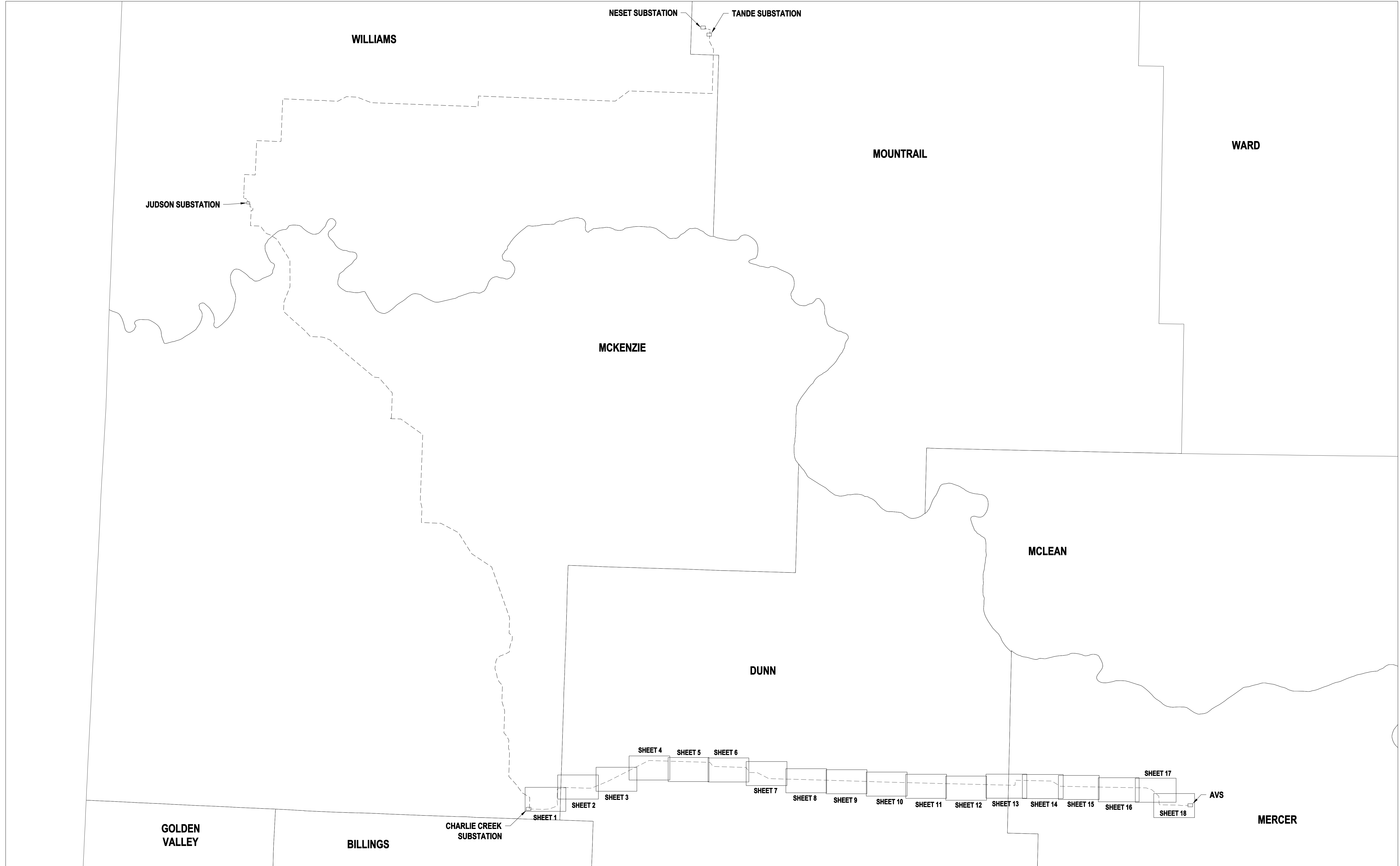
## **ROUTE AND STRUCTURE LOCATIONS FOR AVS-NESET 345kV TRANSMISSION PROJECT**

### **LINE 294 - CHARLIE CREEK TO AVS SEGMENT**

#### **NORTH DAKOTA PUBLIC SERVICE COMMISSION**

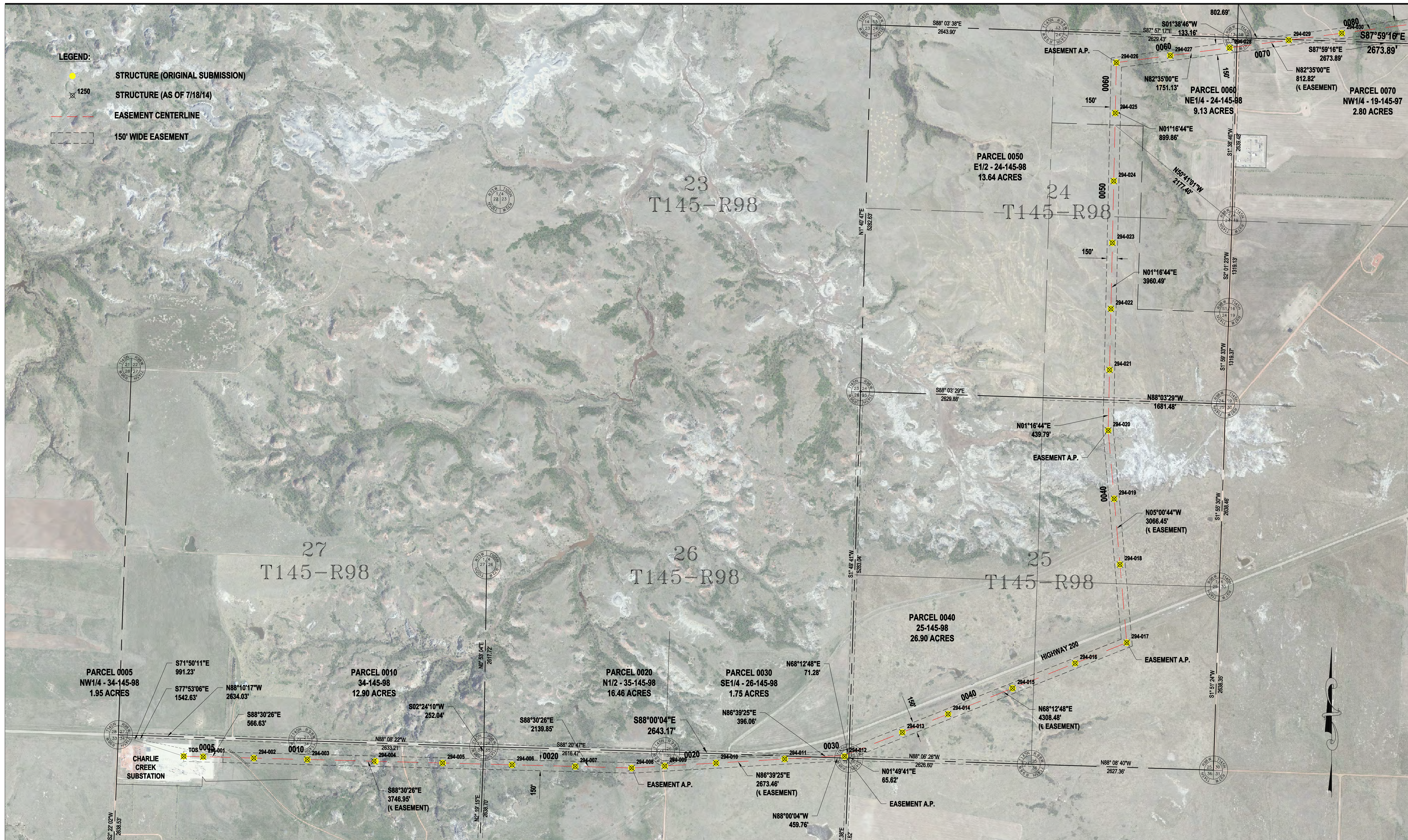
**CASE NO: PU-11-696**

**JULY 2014**



LINE 294  
 CHARLIE CREEK TO AVS  
 SHEET INDEX MAP





**LEGEND:**  
 ● STRUCTURE (ORIGINAL SUBMISSION)  
 X 1250 STRUCTURE (AS OF 7/18/14)  
 --- EASEMENT CENTERLINE  
 [ ] 150' WIDE EASEMENT

Basis of Bearing is NAD83 ND State Plane North Zone - International Feet. All distances are Ground Distance. Combined scale factor = 0.999893141

NOTE:  
 STRUCTURE PLACEMENT AS OF 7-18-2014

SEC. 24,25,26,27 - T145N - R98W  
 MCKENZIE COUNTY, NORTH DAKOTA

PSC SUBMITTAL FOR LINE 294  
 CHARLIE CREEK TO AVS  
 345kV TRANSMISSION LINE





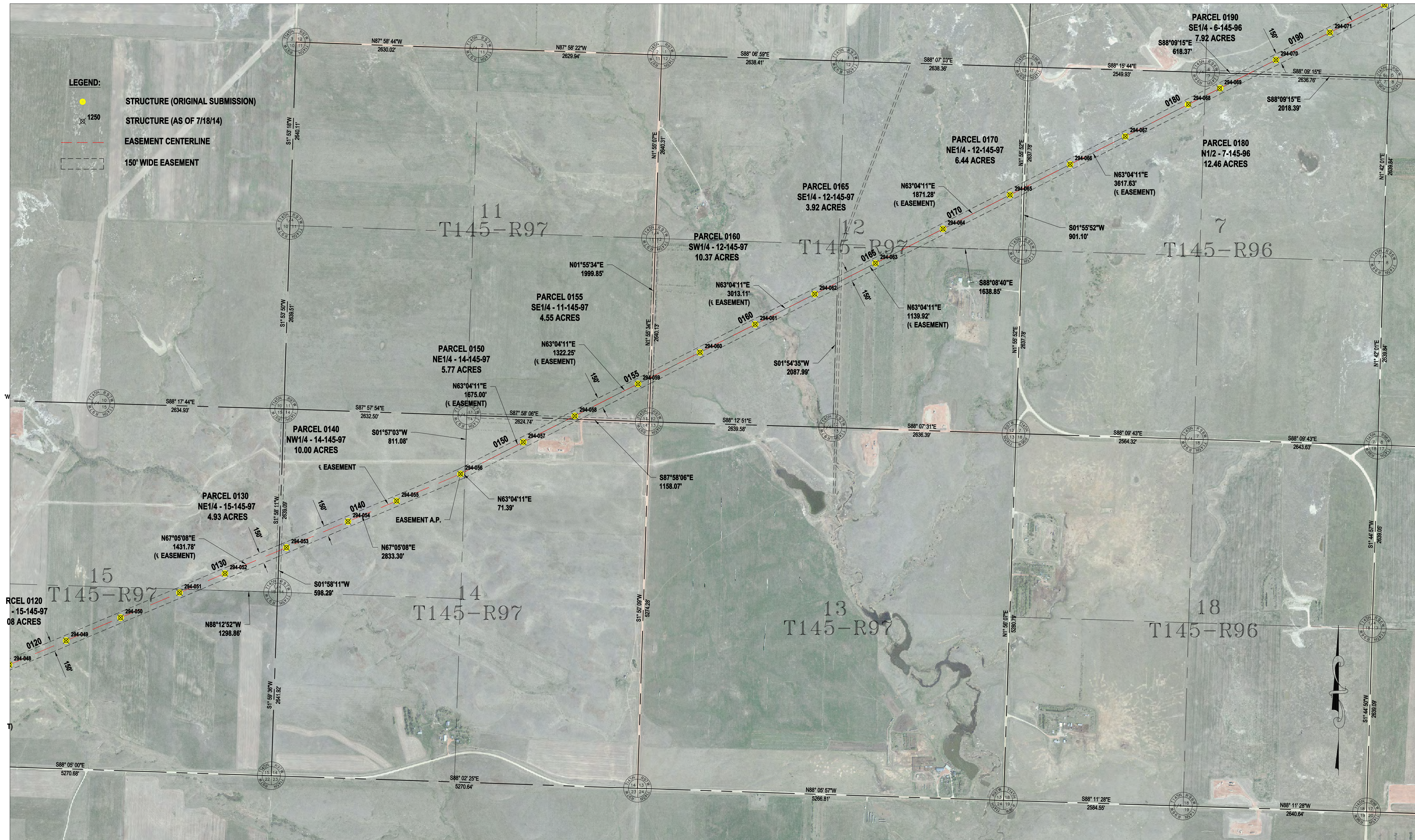
Basis of Bearing is NAD83 ND State Plane North Zone - International Feet. All distances are Ground Distance. Combined scale factor = 0.999893141

SEC. 16,17,18,19 - T145N - R98W  
DUNN COUNTY, NORTH DAKOTA

NOTE:  
STRUCTURE PLACEMENT AS OF 7-18-2014

PSC SUBMITTAL FOR LINE 294  
CHARLIE CREEK TO AVS  
345kV TRANSMISSION LINE





Basis of Bearing is NAD83 ND State Plane North Zone - International Feet. All distances are Ground Distance. Combined scale factor = 0.999893141

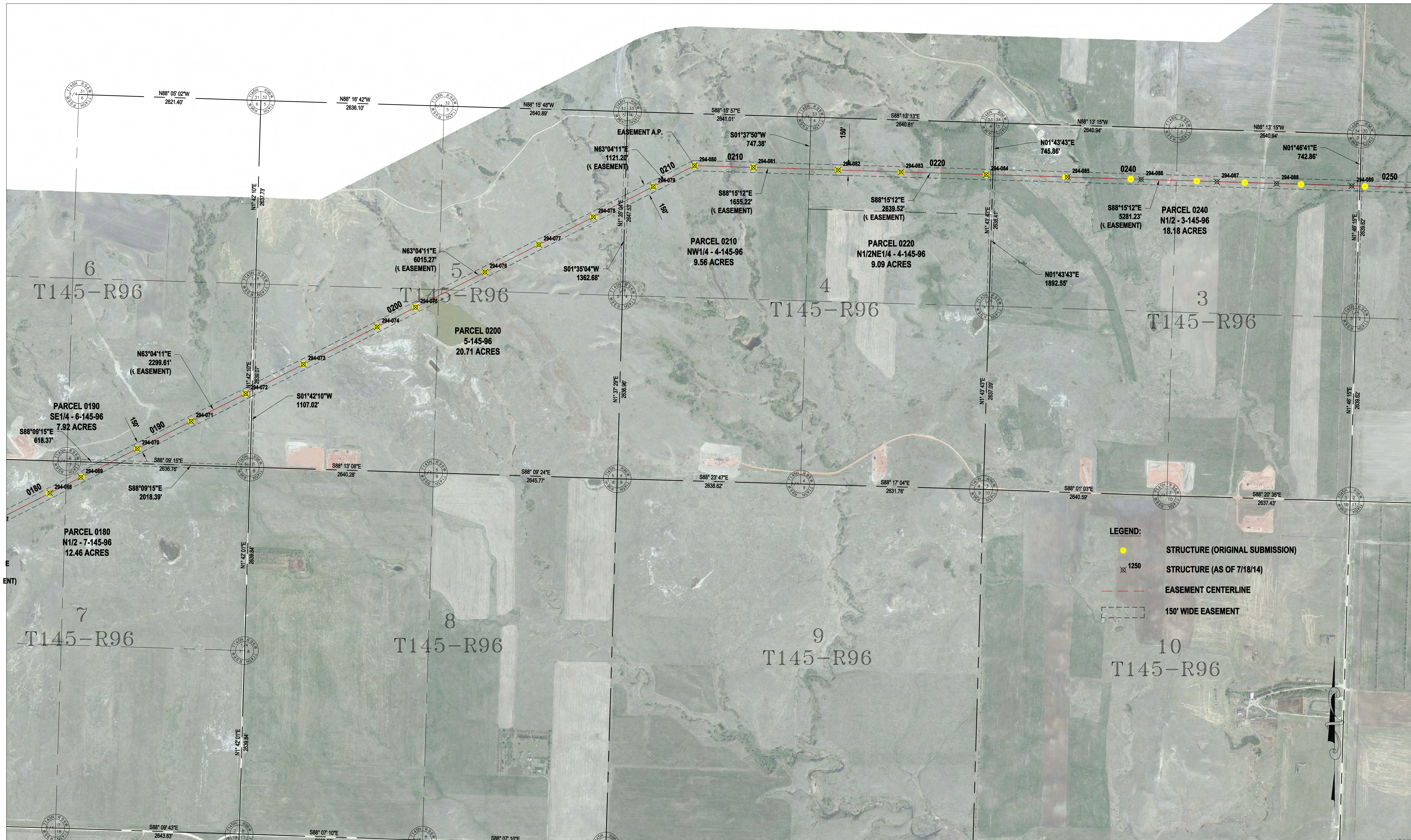
SEC. 11,12,13,14,15 - T145N - R97W  
 SEC. 7,18 - T145N - R96W  
 DUNN COUNTY, NORTH DAKOTA

NOTE:  
 STRUCTURE PLACEMENT AS OF 7-18-2014

PSC SUBMITTAL FOR LINE 294  
 CHARLIE CREEK TO AVS  
 345kV TRANSMISSION LINE



A Touchstone Energy Cooperative



Basis of Bearing is NAD83 ND State Plane North Zone - International Feet. All distances are Ground Distance. Combined scale factor = 0.999893141

SEC. 3,4,5,6,7,8,9,10 - T145N - R96W  
DUNN COUNTY, NORTH DAKOTA

NOTE:  
STRUCTURE PLACEMENT AS OF 7-18-2014

PSC SUBMITTAL FOR LINE 294  
CHARLIE CREEK TO AVS  
345kV TRANSMISSION LINE

**BASIN ELECTRIC  
POWER COOPERATIVE**  
A Touchstone Energy Cooperative



Basis of Bearing is NAD83 ND State Plane North Zone - International Feet. All distances are Ground Distance. Combined scale factor = 0.999893141

SEC. 1,2,11,12 - T145N - R96W  
 SEC. 5,6 - T145N - R95W  
 DUNN COUNTY, NORTH DAKOTA

NOTE:  
 STRUCTURE PLACEMENT AS OF 7-18-2014

- LEGEND:**
- STRUCTURE (ORIGINAL SUBMISSION)
  - ⊗ 1250 STRUCTURE (AS OF 7/18/14)
  - EASEMENT CENTERLINE
  - 150' WIDE EASEMENT

PSC SUBMITTAL FOR LINE 294  
 CHARLIE CREEK TO AVS  
 345kV TRANSMISSION LINE





Basis of Bearing is NAD83 ND State Plane North Zone - International Feet. All distances are Ground Distance. Combined scale factor = 0.999893141

SEC. 1,2,3,4 - T145N - R95W  
DUNN COUNTY, NORTH DAKOTA

NOTE:  
STRUCTURE PLACEMENT AS OF 7-18-2014

**LEGEND:**  
 ● STRUCTURE (ORIGINAL SUBMISSION)  
 x 1250 STRUCTURE (AS OF 7/18/14)  
 --- EASEMENT CENTERLINE  
 - - - 150' WIDE EASEMENT



PSC SUBMITTAL FOR LINE 294  
CHARLIE CREEK TO AVS  
345kV TRANSMISSION LINE





Basis of Bearing is NAD83 ND State Plane North Zone - International Feet. All distances are Ground Distance. Combined scale factor = 0.999893141

SEC. 1 - T145N - R95W  
SEC. 6,7,8,9 - T145N - R94W  
DUNN COUNTY, NORTH DAKOTA

NOTE:  
STRUCTURE PLACEMENT AS OF 7-18-2014

PSC SUBMITTAL FOR LINE 294  
CHARLIE CREEK TO AVS  
345kV TRANSMISSION LINE





Basis of Bearing is NAD83 ND State Plane North Zone - International Feet. All distances are Ground Distance. Combined scale factor = 0.999893141

SEC. 10,11,12 - T145N - R94W  
 SEC. 7 - T145N - R93W  
 DUNN COUNTY, NORTH DAKOTA

NOTE:  
 STRUCTURE PLACEMENT AS OF 7-18-2014

PSC SUBMITTAL FOR LINE 294  
 CHARLIE CREEK TO AVS  
 345kV TRANSMISSION LINE





Basis of Bearing is NAD83 ND State Plane North Zone - International Feet. All distances are Ground Distance. Combined scale factor = 0.999893141

SEC. 8,9,10,11 - T145N - R93W  
DUNN COUNTY, NORTH DAKOTA

NOTE:  
STRUCTURE PLACEMENT AS OF 7-18-2014

**LEGEND:**

- STRUCTURE (ORIGINAL SUBMISSION)
- x STRUCTURE (AS OF 7/18/14)
- EASEMENT CENTERLINE
- 150' WIDE EASEMENT

PSC SUBMITTAL FOR LINE 294  
CHARLIE CREEK TO AVS  
345kV TRANSMISSION LINE  
**BASIN ELECTRIC  
POWER COOPERATIVE**



A Touchstone Energy Cooperative

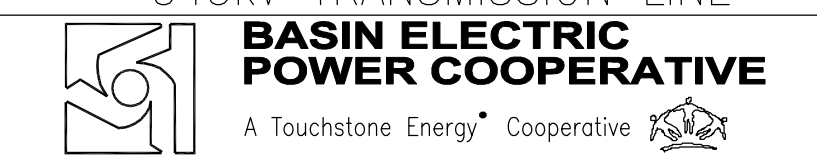


Basis of Bearing is NAD83 ND State Plane North Zone - International Feet. All distances are Ground Distance. Combined scale factor = 0.999893141

SEC. 12 - T145N - R93W  
 SEC. 7,8 - T145N - R92W  
 DUNN COUNTY, NORTH DAKOTA

NOTE:  
 STRUCTURE PLACEMENT AS OF 7-18-2014

PSC SUBMITTAL FOR LINE 294  
 CHARLIE CREEK TO AVS  
 345kV TRANSMISSION LINE





Basis of Bearing is NAD83 ND State Plane North Zone - International Feet. All distances are Ground Distance. Combined scale factor = 0.999893141

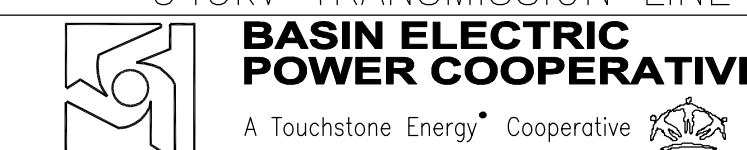
SEC. 9,10,11,12 - T145N - R92W  
DUNN COUNTY, NORTH DAKOTA

NOTE:  
STRUCTURE PLACEMENT AS OF 7-18-2014

- LEGEND:**
- STRUCTURE (ORIGINAL SUBMISSION)
  - x 1250 STRUCTURE (AS OF 7/18/14)
  - EASEMENT CENTERLINE
  - 150' WIDE EASEMENT



PSC SUBMITTAL FOR LINE 294  
CHARLIE CREEK TO AVS  
345kV TRANSMISSION LINE





**LEGEND:**

- STRUCTURE (ORIGINAL SUBMISSION)
- x 1250 STRUCTURE (AS OF 7/18/14)
- - - EASEMENT CENTERLINE
- - - 150' WIDE EASEMENT

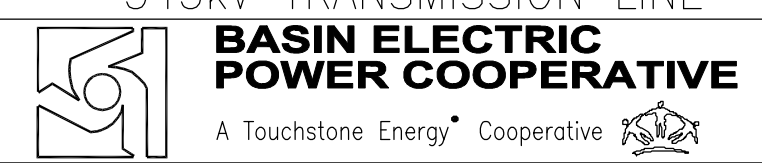


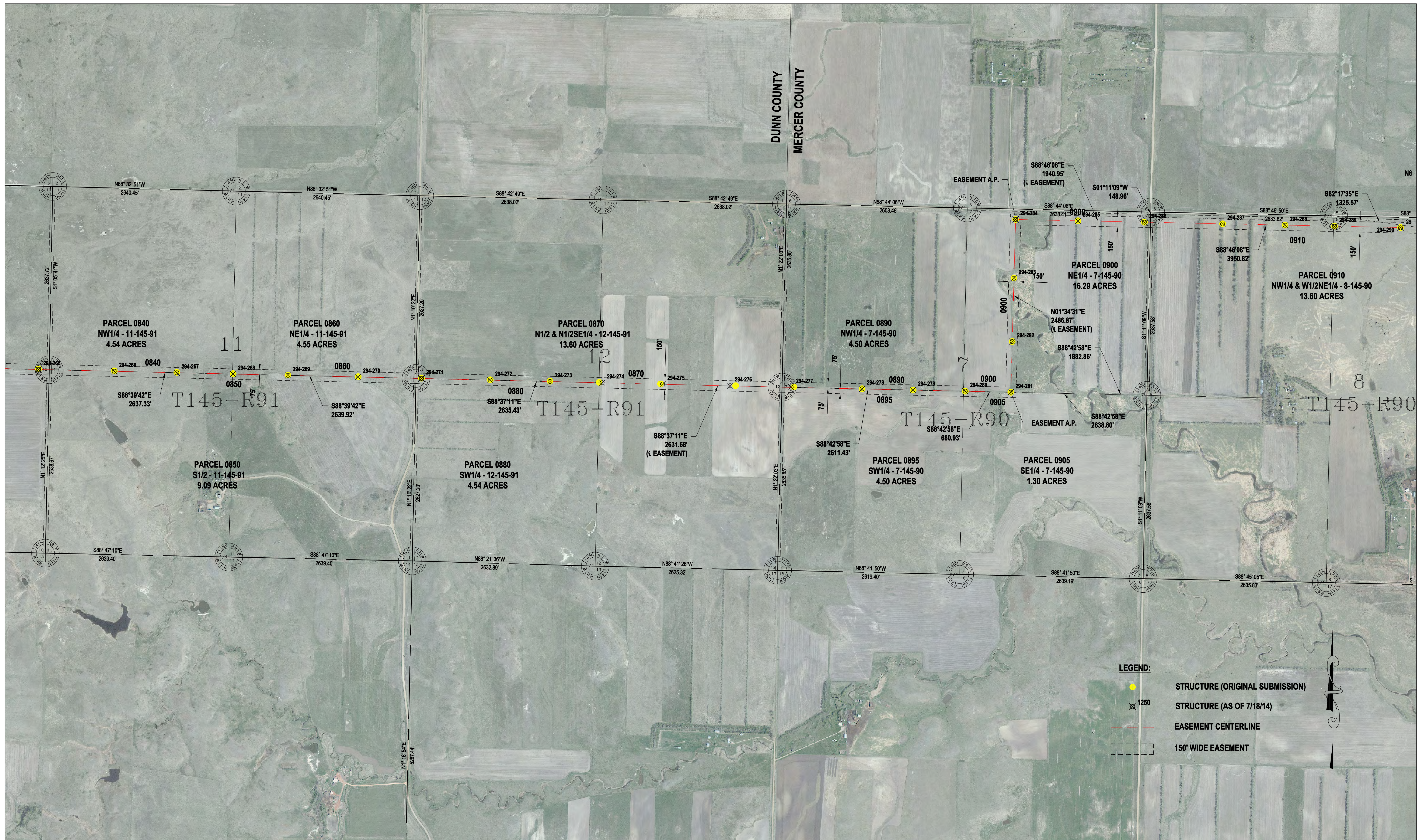
Basis of Bearing is NAD83 ND State Plane North Zone - International Feet. All distances are Ground Distance. Combined scale factor = 0.999893141

SEC. 7,8,9,10 - T145N - R91W  
DUNN COUNTY, NORTH DAKOTA

NOTE:  
STRUCTURE PLACEMENT AS OF 7-18-2014

PSC SUBMITTAL FOR LINE 294  
CHARLIE CREEK TO AVS  
345kV TRANSMISSION LINE





Basis of Bearing is NAD83 ND State Plane North Zone - International Feet. All distances are Ground Distance. Combined scale factor = 0.999893141

SEC. 11,12 - T145N - R91W  
 DUNN COUNTY, NORTH DAKOTA  
 SEC. 7,8 - T145N - R90W  
 MERCER COUNTY, NORTH DAKOTA

NOTE:  
 STRUCTURE PLACEMENT AS OF 7-18-2014

PSC SUBMITTAL FOR LINE 294  
 CHARLIE CREEK TO AVS  
 345kV TRANSMISSION LINE

**BASIN ELECTRIC POWER COOPERATIVE**  
 A Touchstone Energy Cooperative



Basis of Bearing is NAD83 ND State Plane North Zone - International Feet. All distances are Ground Distance. Combined scale factor = 0.999893141

SEC. 8,9,10,11 - T145N - R90W  
MERCER COUNTY, NORTH DAKOTA

NOTE:  
STRUCTURE PLACEMENT AS OF 7-18-2014

PSC SUBMITTAL FOR LINE 294  
CHARLIE CREEK TO AVS  
345kV TRANSMISSION LINE





Basis of Bearing is NAD83 ND State Plane North Zone - International Feet. All distances are Ground Distance. Combined scale factor = 0.999893141

SEC. 12 - T145N - R90W  
 SEC. 7,8,9 - T145N - R89W  
 MERCER COUNTY, NORTH DAKOTA

NOTE:  
 STRUCTURE PLACEMENT AS OF 7-18-2014

- LEGEND:**
- STRUCTURE (ORIGINAL SUBMISSION)
  - X STRUCTURE (AS OF 7/18/14)
  - EASEMENT CENTERLINE
  - - - 150' WIDE EASEMENT

PSC SUBMITTAL FOR LINE 294  
 CHARLIE CREEK TO AVS  
 345kV TRANSMISSION LINE





- LEGEND:**
- STRUCTURE (ORIGINAL SUBMISSION)
  - X STRUCTURE (AS OF 7/18/14)
  - EASEMENT CENTERLINE
  - 150' WIDE EASEMENT

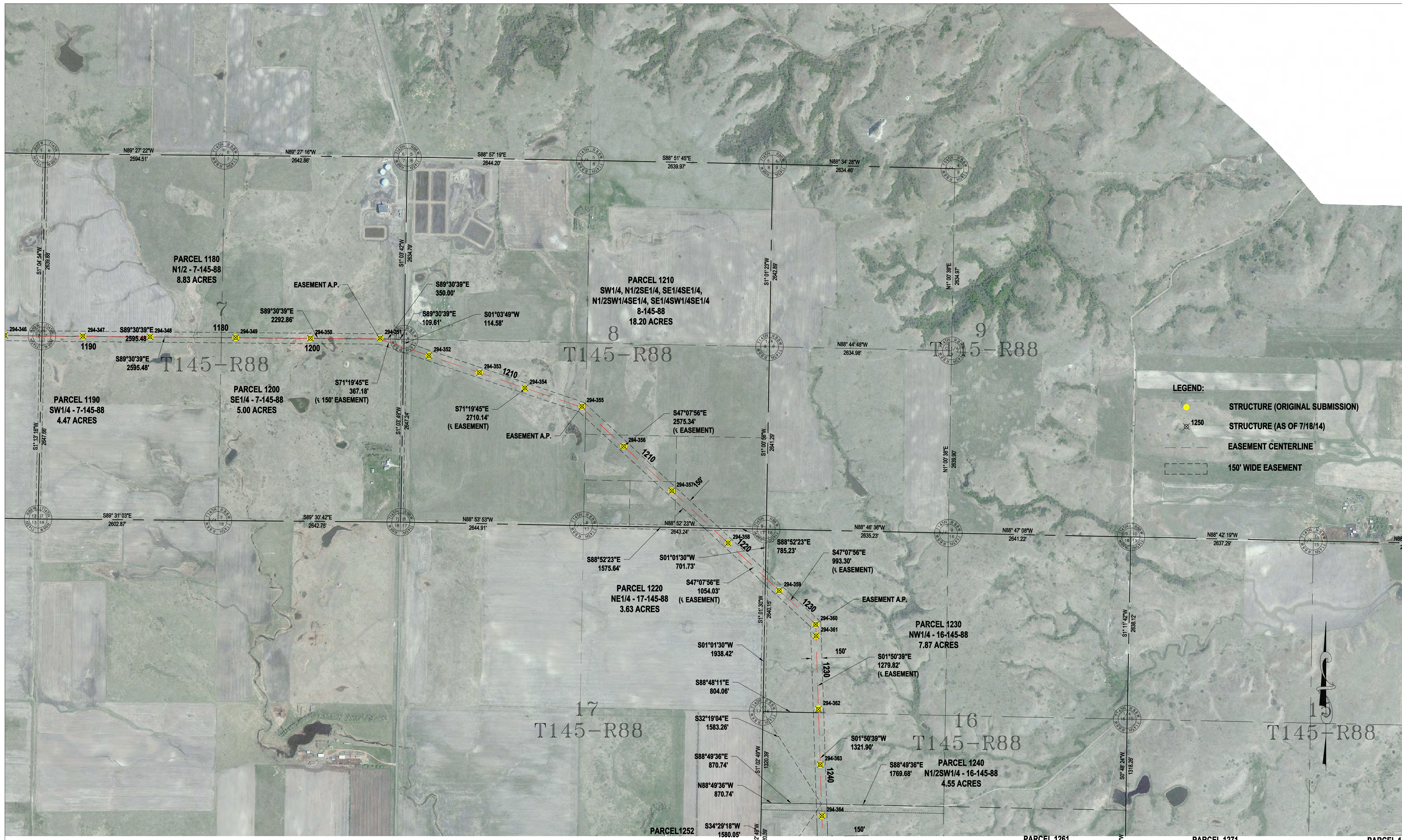
Basis of Bearing is NAD83 ND State Plane North Zone - International Feet. All distances are Ground Distance. Combined scale factor = 0.999893141

NOTE:  
STRUCTURE PLACEMENT AS OF 7-18-2014

SEC. 9,10,11,12 - T145N - R89W  
MERCER COUNTY, NORTH DAKOTA

PSC SUBMITTAL FOR LINE 294  
CHARLIE CREEK TO AVS  
345kV TRANSMISSION LINE

**BASIN ELECTRIC  
POWER COOPERATIVE**  
A Touchstone Energy Cooperative



- LEGEND:**
- STRUCTURE (ORIGINAL SUBMISSION)
  - ✕ STRUCTURE (AS OF 7/18/14)
  - EASEMENT CENTERLINE
  - 150' WIDE EASEMENT

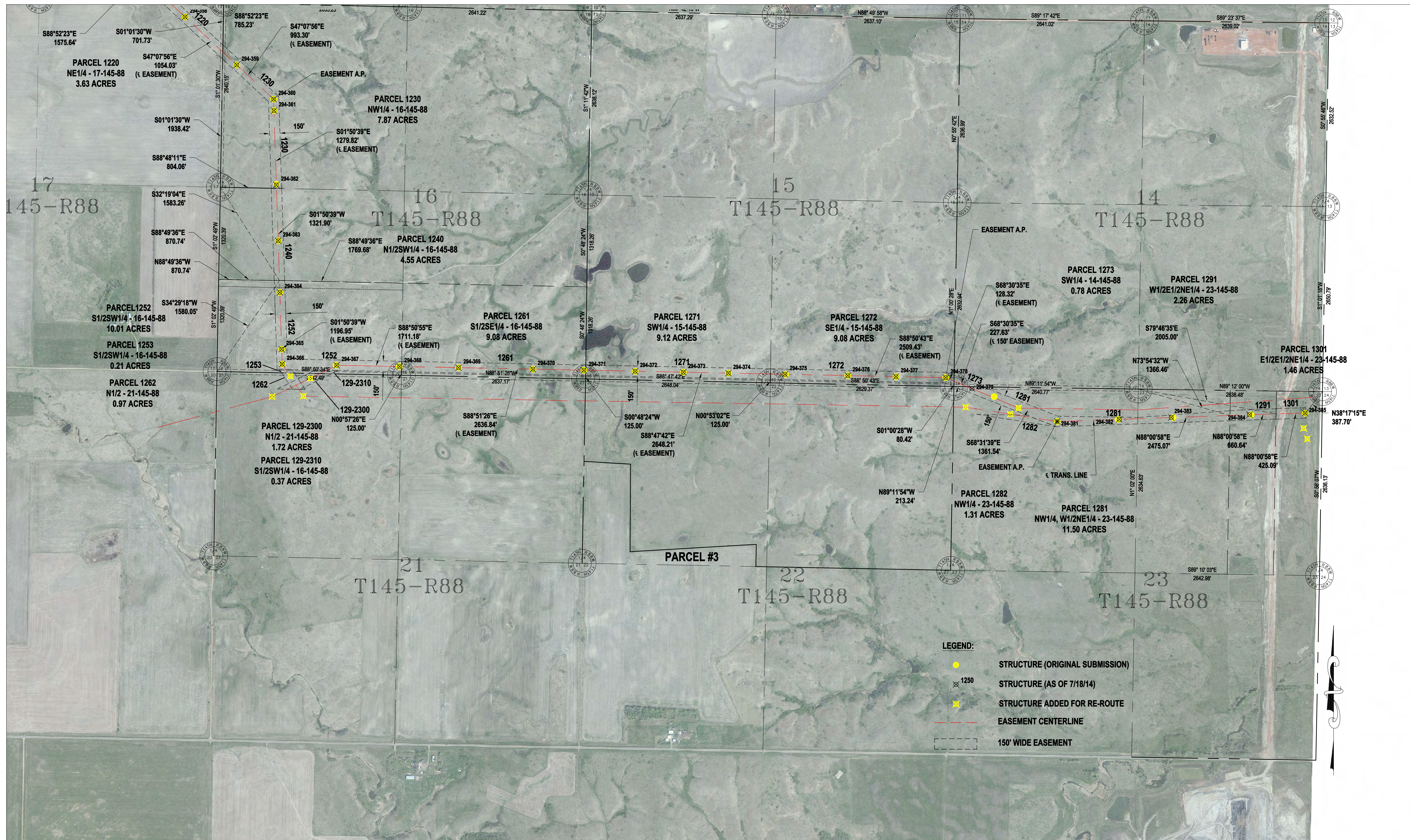
Basis of Bearing is NAD83 ND State Plane North Zone - International Feet. All distances are Ground Distance. Combined scale factor = 0.999893141

SEC. 7,8,9,15,16,17 - T145N - R88W  
MERCER COUNTY, NORTH DAKOTA

NOTE:  
STRUCTURE PLACEMENT AS OF 7-18-2014

PSC SUBMITTAL FOR LINE 294  
CHARLIE CREEK TO AVS  
345kV TRANSMISSION LINE





Basis of Bearing is NAD83 ND State Plane North Zone - International Feet. All distances are Ground Distance. Combined scale factor = 0.999893141

SEC. 14,15,16,17,21,22,23 - T145N - R88W  
MERCER COUNTY, NORTH DAKOTA

NOTE:  
STRUCTURE PLACEMENT AS OF 7-18-2014

PSC SUBMITTAL FOR LINE 294  
CHARLIE CREEK TO AVS  
345kV TRANSMISSION LINE

