

**BASIN ELECTRIC  
POWER COOPERATIVE**

1717 EAST INTERSTATE AVENUE  
BISMARCK, NORTH DAKOTA 58503  
PHONE 701-223-0441 FAX 701-557-5336



May 26, 2015

Darrell Nitschke  
Executive Director  
North Dakota Public Service Commission  
600 East Boulevard, Dept. 408  
Bismarck, ND 58505-0480

Basin Electric Power Cooperative  
AVS to Neseet 345-kV Transmission Project Siting Application  
PU-11-696

Dear Mr. Nitschke:

Enclosed you will find a structure relocation request for the AVS to Neseet 345-kV Transmission Project. The request has been filed electronically to the PU-11-696 docket and is also contained within the enclosed electronic CD.

The structure relocation requests are all within the established corridor as reflected in the Second Amended Corridor Certificate No. 152.

For inquiries regarding the application, please call Cris Miller, Senior Environmental Project Specialist at (701) 557-5635.

Sincerely,

A handwritten signature in black ink that reads "Cris Miller". The signature is fluid and cursive, with the first name "Cris" and last name "Miller" clearly distinguishable.

Cris Miller

/ser  
Enclosures

cc: Casey Jacobson-Electronic  
Amanda Wangler -Electronic

CASE #: PU-11-696

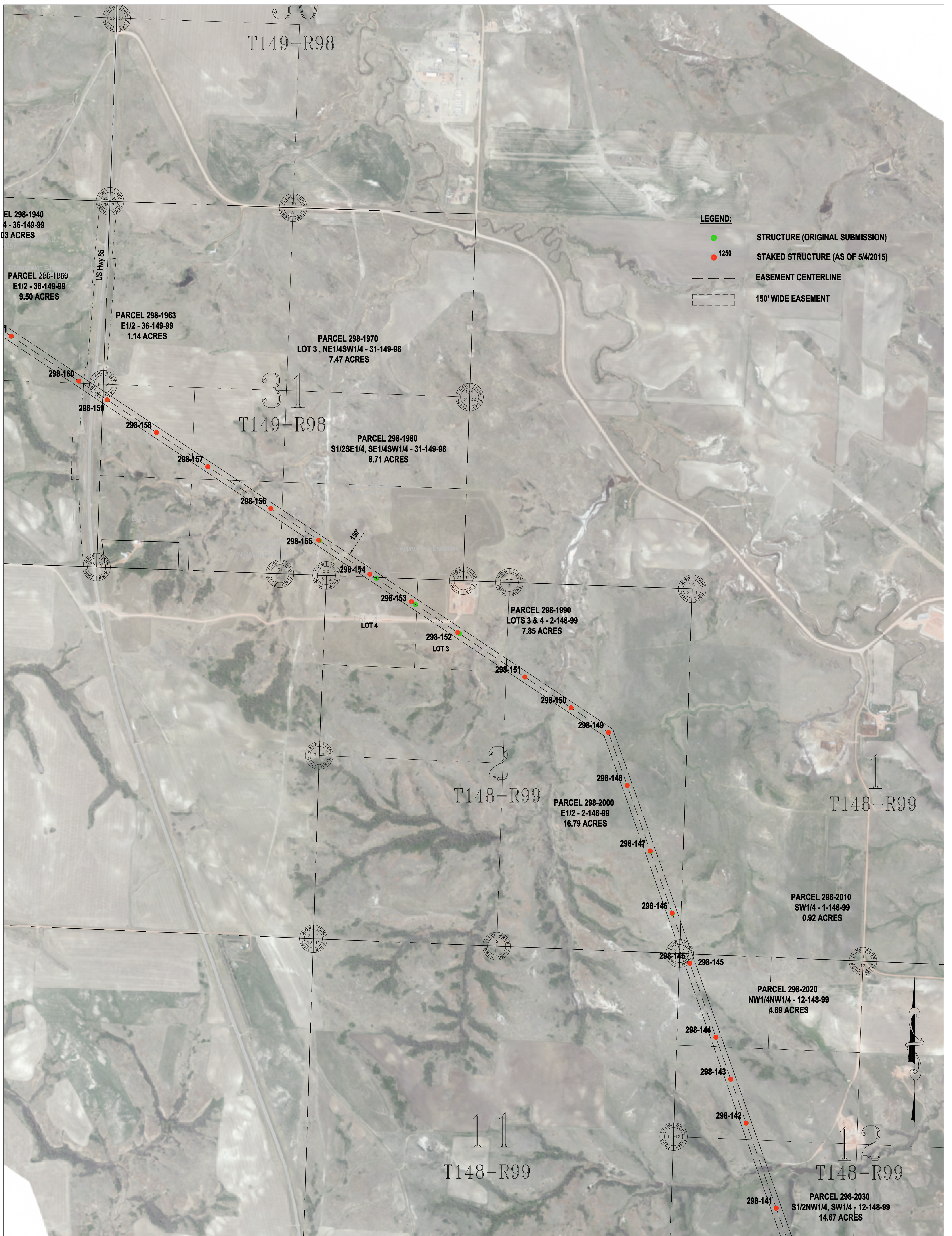
PROJECT: AVS-Neset 345kV Transmission Line

Date May 4, 2015

### Structure Relocate Approval Request

STRUCTURE	LOCATION	RELOCATION	REASON FOR RELOCATE
298-152	N1/2 NW1/4 2-148-99	31' AHEAD	ENGINEERING ADJUSTMENT
298-153	N1/2 NW1/4 2-148-99	60' AHEAD	ENGINEERING ADJUSTMENT
298-154	S1/2 SE1/4 31-149-98	110' AHEAD	ENGINEERING ADJUSTMENT
298-155	S1/2 SE1/4 31-149-98	16' AHEAD	ENGINEERING ADJUSTMENT
298-190	NW1/4 16-149-99	11' AHEAD AND 13' LEFT	ENGINEERING ADJUSTMENT
298-191	NE1/4 17-149-99	18' LEFT	ENGINEERING ADJUSTMENT
298-192	NE1/4 17-149-99	6' AHEAD AND 22' LEFT	ENGINEERING ADJUSTMENT
298-193	N1/2 17-149-99	27' LEFT	ENGINEERING ADJUSTMENT
298-194	NW1/4 17-149-99	90' BACK AND 22' LEFT	ENGINEERING ADJUSTMENT
298-195	NW1/4 17-149-99	115' BACK AND 17' LEFT	ENGINEERING ADJUSTMENT
298-196	NE1/4 18-149-99	10' LEFT	ENGINEERING ADJUSTMENT
298-197	NE1/4 18-149-99	10' AHEAD AND 5' LEFT	ENGINEERING ADJUSTMENT
298-201	NE1/4 18-149-99	19' BACK	ENGINEERING ADJUSTMENT
298-202	SE1/4 7-149-99	15' BACK	ENGINEERING ADJUSTMENT
298-360	NE1/4 2-152-102	25' BACK AND 15' LEFT	ENGINEERING ADJUSTMENT
298-365	SW1/4 33-153-101	20' AHEAD	ENGINEERING ADJUSTMENT
298-366	NW1/4 33-153-101	10' BACK	ENGINEERING ADJUSTMENT
298-370	SW1/4 28-153-101	25' AHEAD	ENGINEERING ADJUSTMENT
298-387	NE1/4 8-153-101	10' RIGHT	ENGINEERING ADJUSTMENT
298-388	NE1/4 8-153-101	12' RIGHT	ENGINEERING ADJUSTMENT
298-389	NW1/4 8-153-101	14' RIGHT	ENGINEERING ADJUSTMENT
298-390	NW1/4 8-153-101	15' RIGHT	ENGINEERING ADJUSTMENT
298-391	SE1/4 5-153-101	12' RIGHT	ENGINEERING ADJUSTMENT
298-395	NE1/4 6-153-101	15' BACK	ENGINEERING ADJUSTMENT
298-396	NW1/4 6-153-101	12' LEFT	ENGINEERING ADJUSTMENT
298-399	NW1/4 6-153-101	20' AHEAD AND 28' RIGHT	ENGINEERING ADJUSTMENT
298-400	NE1/4 1-153-102	13' RIGHT	ENGINEERING ADJUSTMENT
298-401	SE1/4 36-154-102	13' AHEAD	ENGINEERING ADJUSTMENT
298-402	SE1/4 36-154-102	8' AHEAD	ENGINEERING ADJUSTMENT
298-403	SE1/4 36-154-102	12' BACK	ENGINEERING ADJUSTMENT





- LEGEND:**
- STRUCTURE (ORIGINAL SUBMISSION)
  - 1250 STRUCTURE (AS OF 5/4/2015)
  - EASEMENT CENTERLINE
  - 150' WIDE EASEMENT

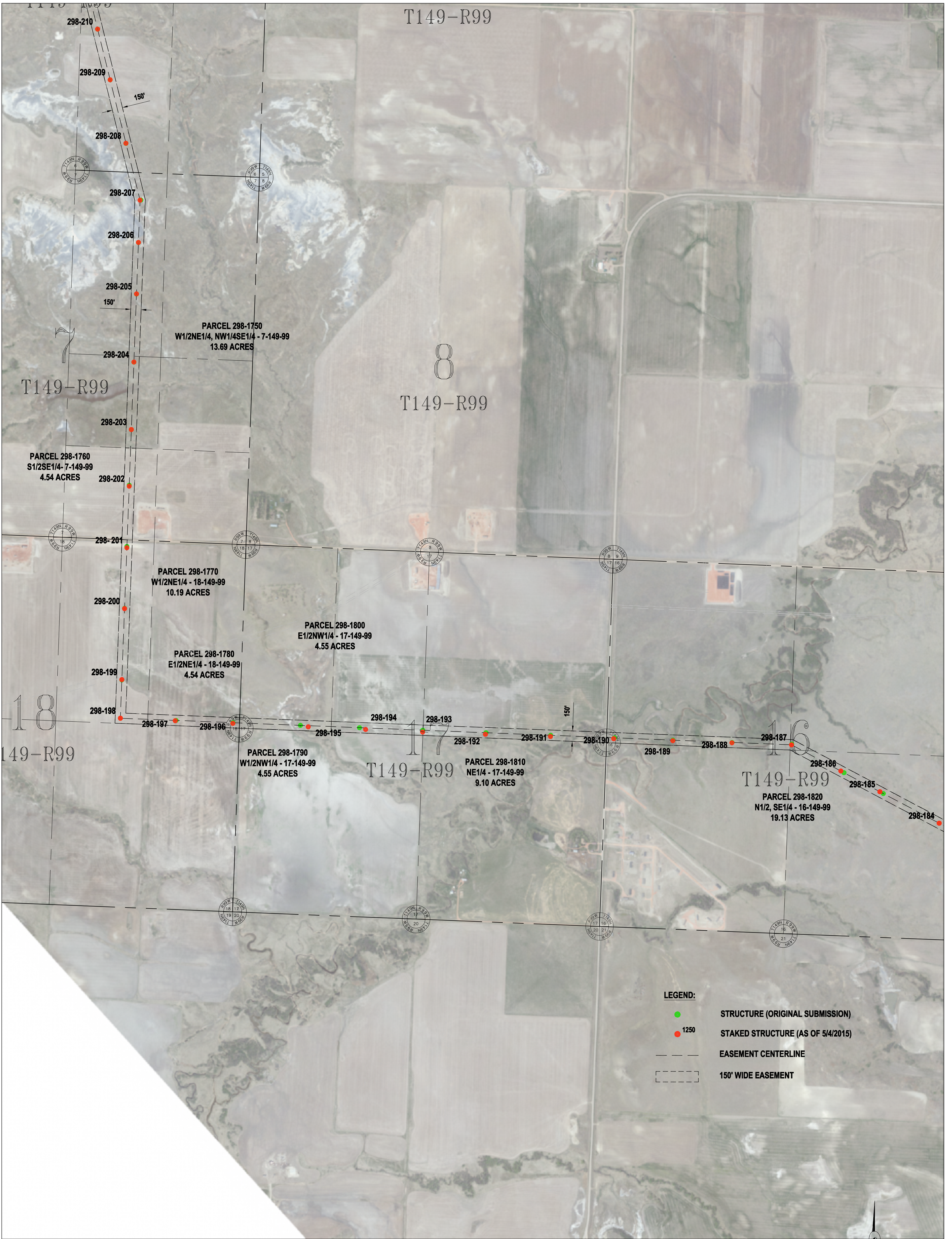
Basis of Bearing is NAD83 ND State Plane North Zone - International Feet. All distances are Ground Distance. Combined scale factor = 0.999893141

SEC. 16,21,22,27,28 - T145N - R98W  
MCKENZIE COUNTY, NORTH DAKOTA

STRUCTURE RELOCATE APPROVAL REQUEST  
CASE #PU-11-696  
AVS-NESET 345kV TRANSMISSION LINE



**BASIN ELECTRIC  
POWER COOPERATIVE**  
A Touchstone Energy Cooperative

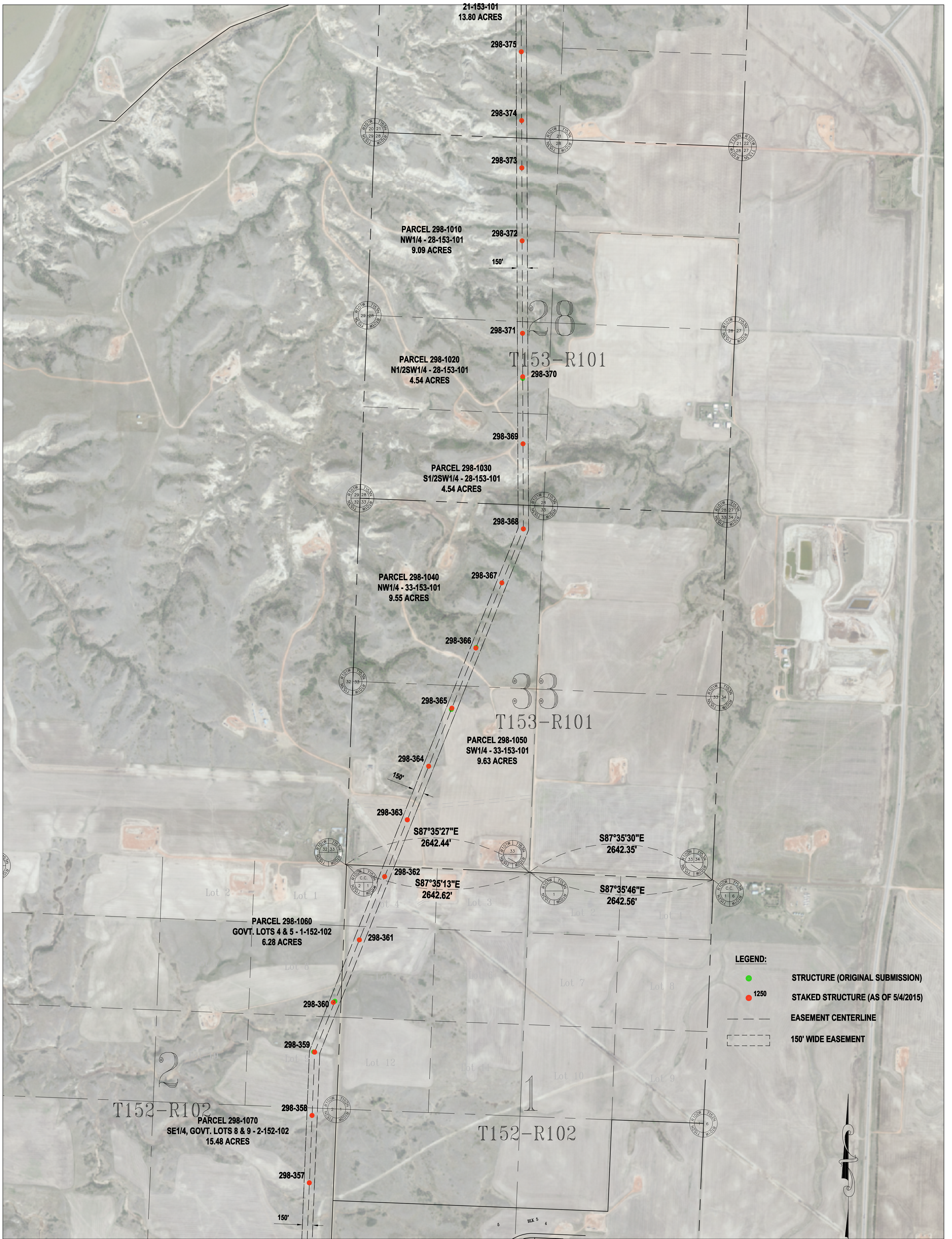


Basis of Bearing is NAD83 ND State Plane North Zone - International Feet. All distances are Ground Distance. Combined scale factor = 0.999893141

SEC. 19,20,29,30,31,32 - T146N - R98W  
MCKENZIE COUNTY, NORTH DAKOTA

STRUCTURE RELOCATE APPROVAL REQUEST  
CASE #PU-11-696  
AVS-NESET 345kV TRANSMISSION LINE





- LEGEND:**
- STRUCTURE (ORIGINAL SUBMISSION)
  - 1250 STRUCTURE (AS OF 5/4/2015)
  - EASEMENT CENTERLINE
  - 150' WIDE EASEMENT

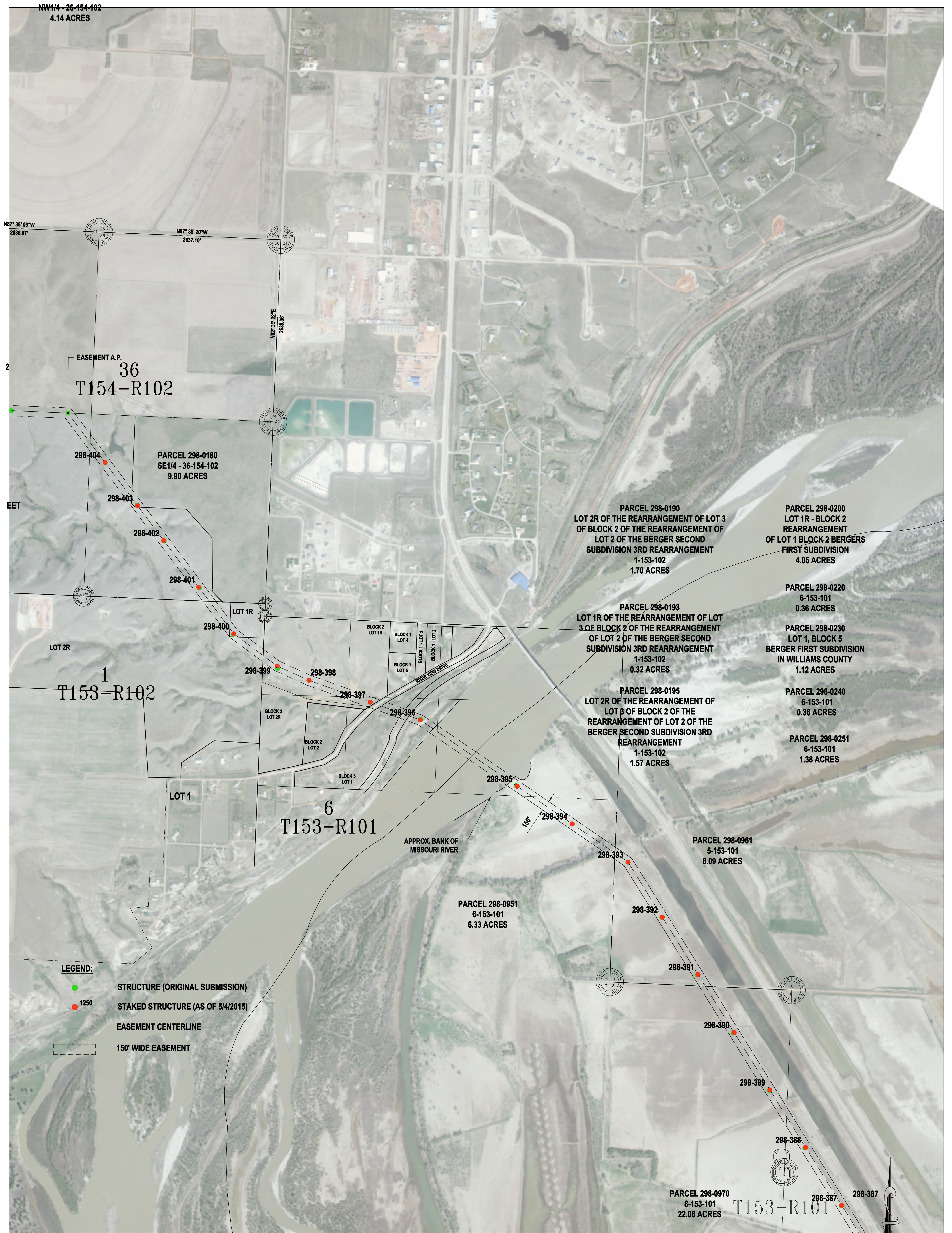
Basis of Bearing is NAD83 ND State Plane North Zone - International Feet. All distances are Ground Distance. Combined scale factor = 0.999893141

SEC. 5,6,7,8,17,18 - T146N - R98W  
MCKENZIE COUNTY, NORTH DAKOTA

STRUCTURE RELOCATE APPROVAL REQUEST  
CASE #PU-11-696  
AVS-NESET 345kV TRANSMISSION LINE



NW1/4 - 26-154-102  
4.14 ACRES



Basis of Bearing is NAD83 ND State Plane North Zone - International Feet. All distances are Ground Distance. Combined scale factor = 0.999893141

SEC. 18,19,30,31 - T147N - R98W  
SEC. 13,24,25,36 - T147N - R99W  
MCKENZIE COUNTY, NORTH DAKOTA

STRUCTURE RELOCATE APPROVAL REQUEST  
CASE #PU-11-696  
AVS-NESET 345kV TRANSMISSION LINE



**BASIN ELECTRIC  
POWER COOPERATIVE**  
A Touchstone Energy Cooperative

SHEET 4 OF 5

REV. NO.  
0



- PARCEL 298-0010  
W1/2 - 23-154-102  
7.83 ACRES
- PARCEL 298-0014  
SUBLOT 7 - 23-154-102  
SURVEY LENGTH 883.48 FEET  
1.52 ACRES
- PARCEL 298-0015  
SW1/4SE1/4 - 23-154-102  
1.45 ACRES
- PARCEL 298-0020  
LOT 2 - BLOCK 1  
JUDSON TOWNSHIP INDUSTRIAL  
PARK SUBDIVISION  
1.29 ACRES
- PARCEL 298-0030  
LOT 4 - BLOCK 1  
JUDSON TOWNSHIP INDUSTRIAL  
PARK SUBDIVISION  
1.14 ACRES
- PARCEL 298-0040  
LOT 3 - BLOCK 1  
JUDSON TOWNSHIP INDUSTRIAL  
PARK SUBDIVISION  
0.20 ACRES
- PARCEL 298-0050  
SE1/4 - 23-154-102  
0.34 ACRES
- PARCEL 298-0055  
NE1/4 - 26-154-102  
0.69 ACRES
- PARCEL 298-0060  
NW1/4NE1/4 - 26-154-102  
4.22 ACRES
- PARCEL 298-0070  
NW1/4 - 26-154-102  
4.14 ACRES

**LEGEND:**

- STRUCTURE (ORIGINAL SUBMISSION)
- 1250 STAKED STRUCTURE (AS OF 5/4/2015)
- EASEMENT CENTERLINE
- 150' WIDE EASEMENT

Basis of Bearing is NAD83 ND State Plane North Zone - International Feet. All distances are Ground Distance. Combined scale factor = 0.999893141

SEC. 31,32 - T148N - R98W  
SEC. 5,6,7,8,17,18 - T147N - R98W  
MCKENZIE COUNTY, NORTH DAKOTA

STRUCTURE RELOCATE APPROVAL REQUEST  
CASE #PU-11-696  
AVS-NESET 345kV TRANSMISSION LINE

**BASIN ELECTRIC POWER COOPERATIVE**  
A Touchstone Energy Cooperative