

## Hamre, John G.

---

**From:** Lein, Jerry R.  
**Sent:** Thursday, June 04, 2015 8:59 AM  
**To:** Cris Miller (cmiller@bepc.com)  
**Cc:** Hamre, John G.  
**Subject:** Re: PU-11-696 Structure Move Request # 5  
**Attachments:** AVS to Neset Project Siting Application PU-11-696\_Request\_5.pdf

Dear Mr. Miller:

Please consider this email to be staff approval of the attached Structure Move Request #5.

Thank you,

Jerry Lein  
701 328-1035

---

**From:** Cris Miller [<mailto:cmiller@bepc.com>]  
**Sent:** Wednesday, May 27, 2015 10:00 AM  
**To:** -Info-Public Service Commission  
**Cc:** Lein, Jerry R.  
**Subject:** PU-11-696 Structure Move Request # 5




Electronic Copy of request dated May 26, 2015.

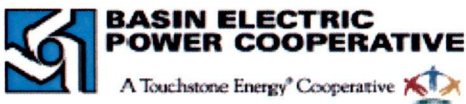
Should you have any question or comment on this submittal please do not hesitate to contact me at your convenience....Cris

### Cris Miller

*Senior Environmental Project Specialist*

*Basin Electric Power Cooperative  
1717 E. Interstate Avenue  
Bismarck, ND 58503-0564*

 e-mail: [cmiller@bepc.com](mailto:cmiller@bepc.com)  
 phone: 701.557.5635  
 web: [basinelectric.com](http://basinelectric.com)



**CONFIDENTIALITY NOTICE:** This email message, including any attachments, is for the sole use of the intended recipient(s) and may contain confidential and privileged information. Any unauthorized review, copying, use, disclosure, or distribution is prohibited. If you are not the intended recipient, please contact the sender by reply e-mail and destroy all copies of the original message. Thank you.

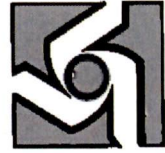
171 **PU-11-696** Filed: 6/4/2015 Pages: 10  
**E-mail - staff approval of structure relocation request**

---

This transmission, email and any files transmitted with it, may be: (1) subject to the Attorney-Client Privilege, (2) an attorney work product, or (3) strictly confidential under federal or state law. If you are not the intended recipient of this message, you may not use, disclose, print, copy or disseminate this information. If you have received this transmission in error, notify the sender (only) and delete the message. This message may also be subject to disclosure under the North Dakota Open Records Laws.

**BASIN ELECTRIC  
POWER COOPERATIVE**

1717 EAST INTERSTATE AVENUE  
BISMARCK, NORTH DAKOTA 58503  
PHONE 701-223-0441 FAX 701-557-5336



May 26, 2015

Darrell Nitschke  
Executive Director  
North Dakota Public Service Commission  
600 East Boulevard, Dept. 408  
Bismarck, ND 58505-0480

Basin Electric Power Cooperative  
AVS to Neset 345-kV Transmission Project Siting Application  
PU-11-696

Dear Mr. Nitschke:

Enclosed you will find a structure relocation request for the AVS to Neset 345-kV Transmission Project. The request has been filed electronically to the PU-11-696 docket and is also contained within the enclosed electronic CD.

The structure relocation requests are all within the established corridor as reflected in the Second Amended Corridor Certificate No. 152.

For inquiries regarding the application, please call Cris Miller, Senior Environmental Project Specialist at (701) 557-5635.

Sincerely,

Cris Miller

/ser  
Enclosures

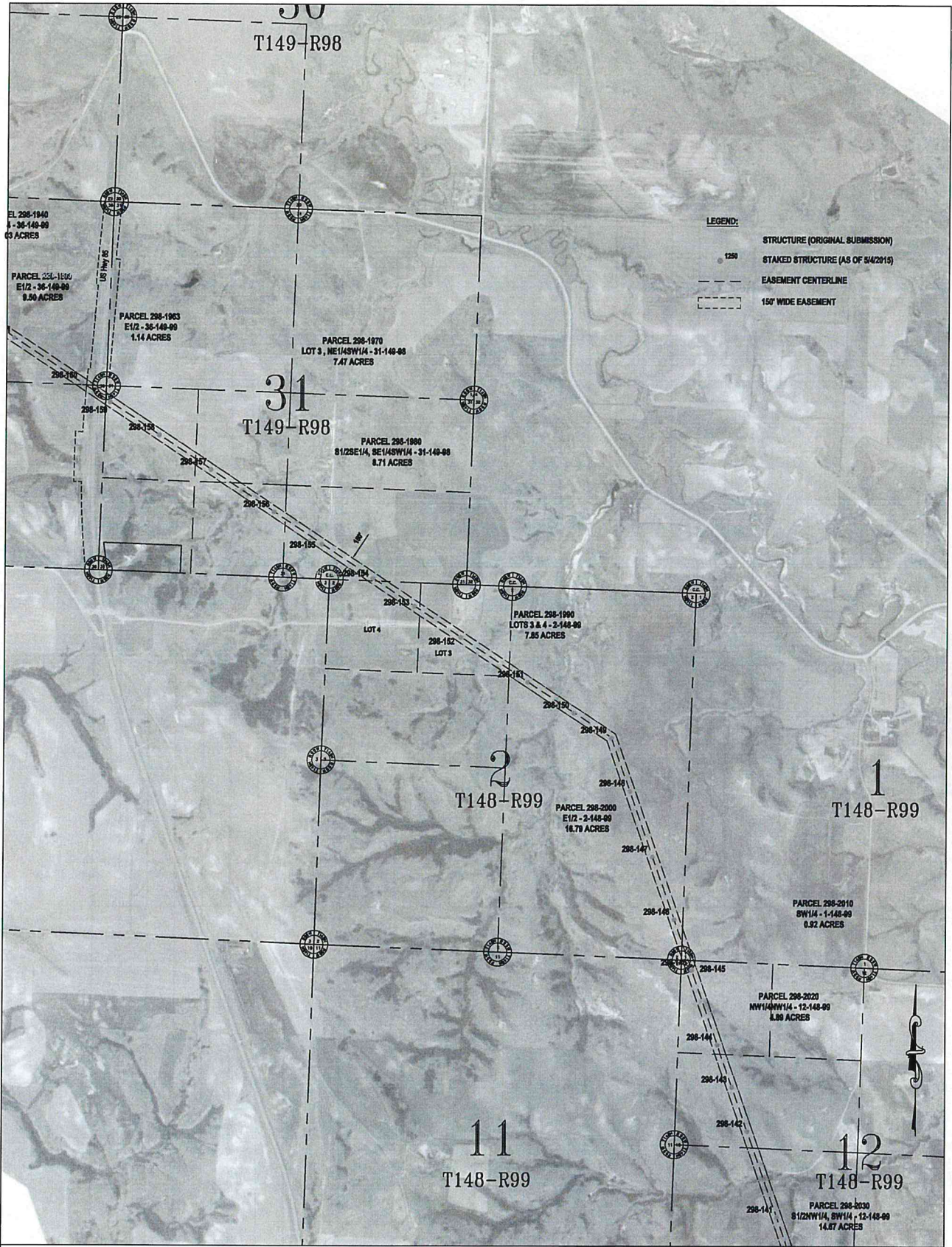
cc: Casey Jacobson-Electronic  
Amanda Wangler -Electronic

**CASE #: PU-11-696**  
**PROJECT: AVS-Neset 345kV Transmission Line**  
**Date May 4, 2015**

**Structure Relocate Approval Request**

<b>STRUCTURE</b>	<b>LOCATION</b>	<b>RELOCATION</b>	<b>REASON FOR RELOCATE</b>
298-152	N1/2 NW1/4 2-148-99	31' AHEAD	ENGINEERING ADJUSTMENT
298-153	N1/2 NW1/4 2-148-99	60' AHEAD	ENGINEERING ADJUSTMENT
298-154	S1/2 SE1/4 31-149-98	110' AHEAD	ENGINEERING ADJUSTMENT
298-155	S1/2 SE1/4 31-149-98	16' AHEAD	ENGINEERING ADJUSTMENT
298-190	NW1/4 16-149-99	11' AHEAD AND 13' LEFT	ENGINEERING ADJUSTMENT
298-191	NE1/4 17-149-99	18' LEFT	ENGINEERING ADJUSTMENT
298-192	NE1/4 17-149-99	6' AHEAD AND 22' LEFT	ENGINEERING ADJUSTMENT
298-193	N1/2 17-149-99	27' LEFT	ENGINEERING ADJUSTMENT
298-194	NW1/4 17-149-99	90' BACK AND 22' LEFT	ENGINEERING ADJUSTMENT
298-195	NW1/4 17-149-99	115' BACK AND 17' LEFT	ENGINEERING ADJUSTMENT
298-196	NE1/4 18-149-99	10' LEFT	ENGINEERING ADJUSTMENT
298-197	NE1/4 18-149-99	10' AHEAD AND 5' LEFT	ENGINEERING ADJUSTMENT
298-201	NE1/4 18-149-99	19' BACK	ENGINEERING ADJUSTMENT
298-202	SE1/4 7-149-99	15' BACK	ENGINEERING ADJUSTMENT
298-360	NE1/4 2-152-102	25' BACK AND 15' LEFT	ENGINEERING ADJUSTMENT
298-365	SW1/4 33-153-101	20' AHEAD	ENGINEERING ADJUSTMENT
298-366	NW1/4 33-153-101	10' BACK	ENGINEERING ADJUSTMENT
298-370	SW1/4 28-153-101	25' AHEAD	ENGINEERING ADJUSTMENT
298-387	NE1/4 8-153-101	10' RIGHT	ENGINEERING ADJUSTMENT
298-388	NE1/4 8-153-101	12' RIGHT	ENGINEERING ADJUSTMENT
298-389	NW1/4 8-153-101	14' RIGHT	ENGINEERING ADJUSTMENT
298-390	NW1/4 8-153-101	15' RIGHT	ENGINEERING ADJUSTMENT
298-391	SE1/4 5-153-101	12' RIGHT	ENGINEERING ADJUSTMENT
298-395	NE1/4 6-153-101	15' BACK	ENGINEERING ADJUSTMENT
298-396	NW1/4 6-153-101	12' LEFT	ENGINEERING ADJUSTMENT
298-399	NW1/4 6-153-101	20' AHEAD AND 28' RIGHT	ENGINEERING ADJUSTMENT
298-400	NE1/4 1-153-102	13' RIGHT	ENGINEERING ADJUSTMENT
298-401	SE1/4 36-154-102	13' AHEAD	ENGINEERING ADJUSTMENT
298-402	SE1/4 36-154-102	8' AHEAD	ENGINEERING ADJUSTMENT
298-403	SE1/4 36-154-102	12' BACK	ENGINEERING ADJUSTMENT

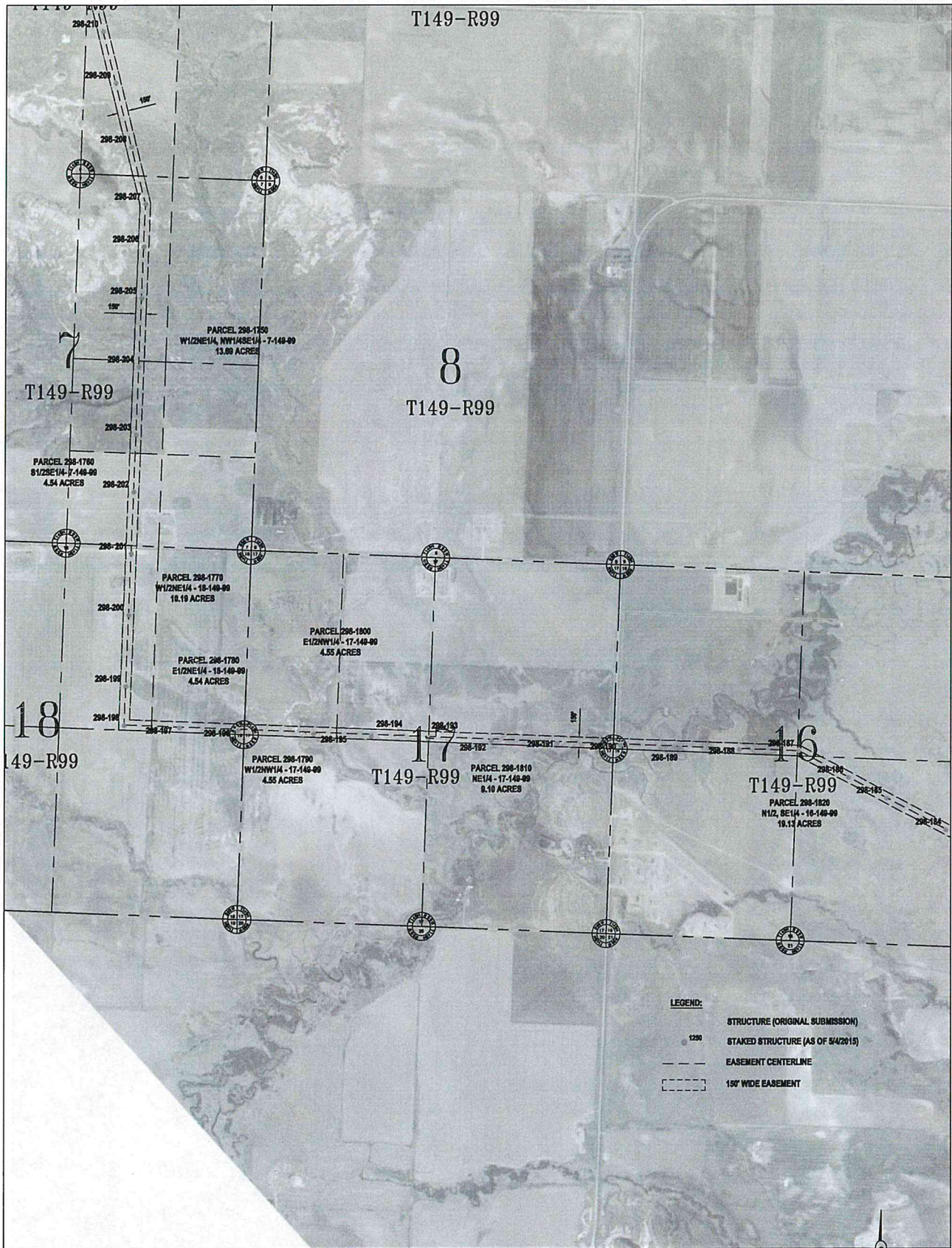




Basis of Bearing is NAD83 ND State Plane North Zone - International Feet. All distances are Ground Distance. Combined scale factor = 0.999893141

SEC. 16,21,22,27,28 - T145N - R98W  
MCKENZIE COUNTY, NORTH DAKOTA

STRUCTURE RELOCATE APPROVAL REQUEST  
CASE #PU-11-696  
AVS-NESET 345KV TRANSMISSION LINE  
BASIN ELECTRIC  
POWER COOPERATIVE  
A Touchstone Energy Cooperative

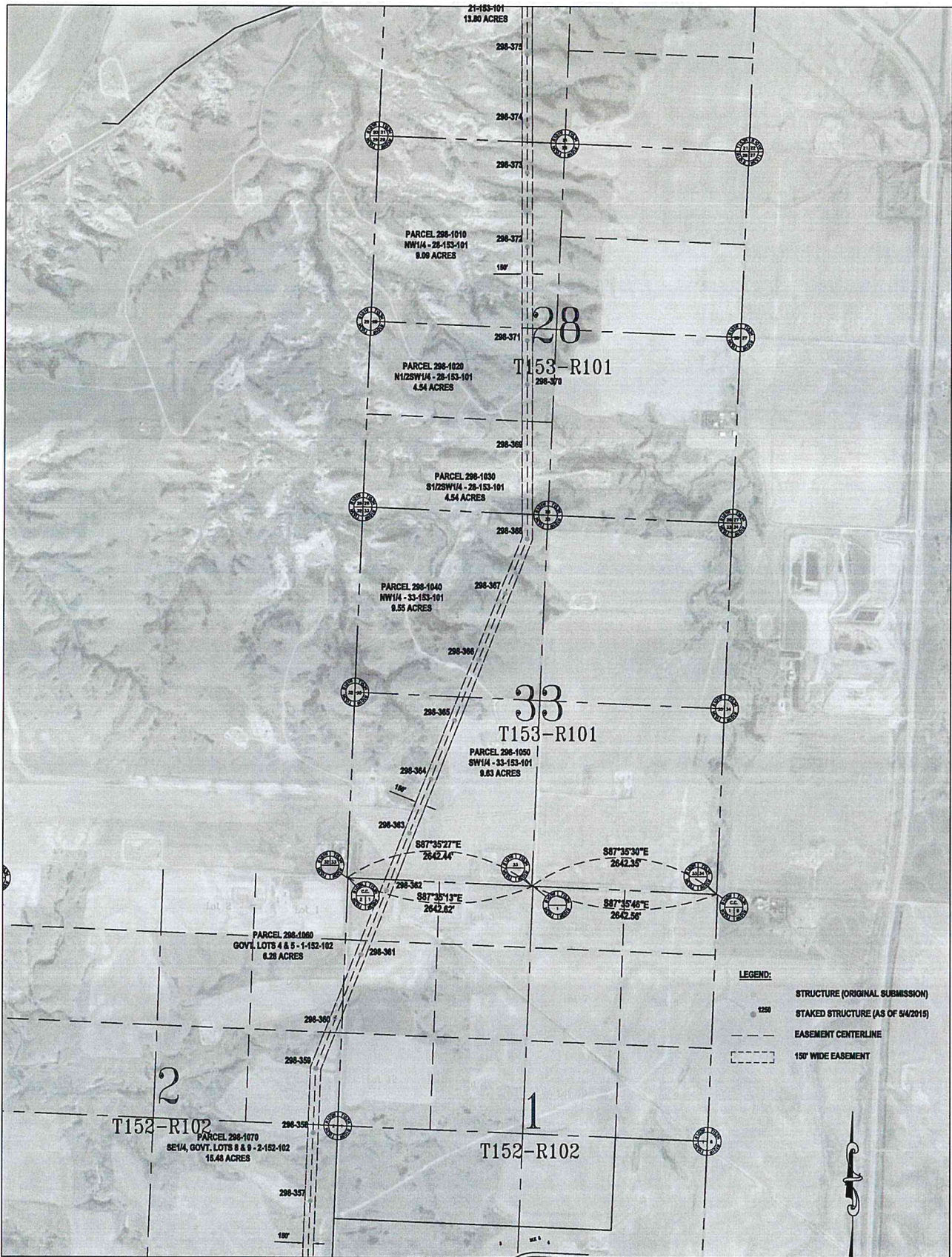


Basis of Bearing is NAD83 ND State Plane North Zone - International Feet. All distances are Ground Distances. Combined scale factor = 0.999893141

SEC. 19,20,29,30,31,32 - T146N - R98W  
MCKENZIE COUNTY, NORTH DAKOTA

- LEGEND:**
- STRUCTURE (ORIGINAL SUBMISSION)
  - 1250 STAKED STRUCTURE (AS OF 5/4/2015)
  - - - EASEMENT CENTERLINE
  - - - - 150' WIDE EASEMENT

STRUCTURE RELOCATE APPROVAL REQUEST  
CASE #PU-11-696  
AVS-NESET 345KV TRANSMISSION LINE  
**BASIN ELECTRIC**  
POWER COOPERATIVE  
A Touchstone Energy Cooperative

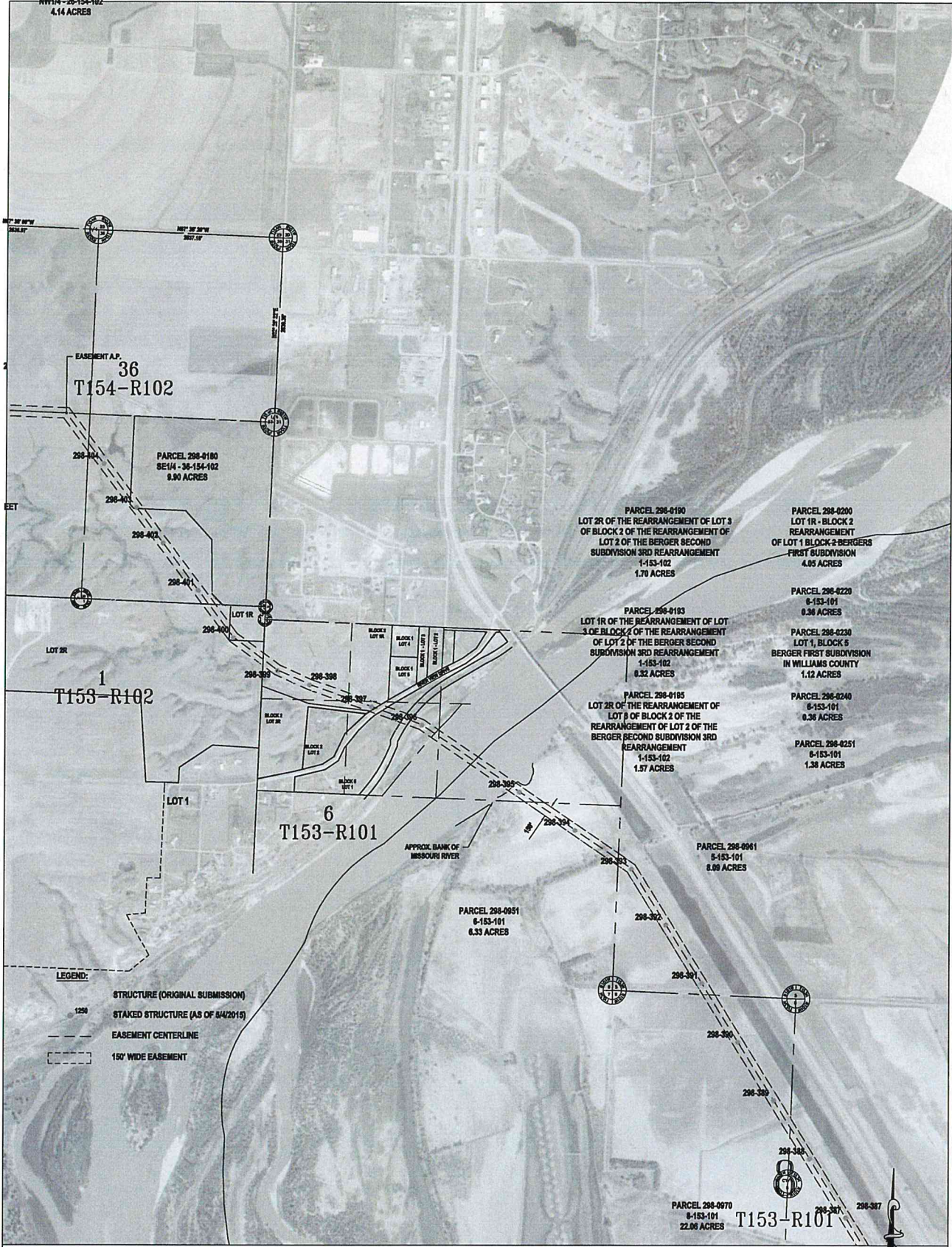


Basis of Bearing is NAD83 ND State Plane North Zone - International Feet. All distances are Ground Distances. Combined scale factor = 0.999993141

SEC. 5,6,7,8,17,18 - T146N - R98W  
MCKENZIE COUNTY, NORTH DAKOTA

STRUCTURE RELOCATE APPROVAL REQUEST  
CASE #PU-11-696  
AVS-NESET 345KV TRANSMISSION LINE  
**BASIN ELECTRIC POWER COOPERATIVE**  
A Touchstone Energy Cooperative

NW1/4 - 26-154-102  
4.14 ACRES



EASEMENT A.P.  
36  
T154-R102

PARCEL 298-0180  
SE1/4 - 36-154-102  
9.90 ACRES

PARCEL 298-0190  
LOT 2R OF THE REARRANGEMENT OF LOT 3  
OF BLOCK 2 OF THE REARRANGEMENT OF  
LOT 2 OF THE BERGER SECOND  
SUBDIVISION 3RD REARRANGEMENT  
1-153-102  
1.70 ACRES

PARCEL 298-0200  
LOT 1R - BLOCK 2  
REARRANGEMENT  
OF LOT 1 BLOCK 2 BERGERS  
FIRST SUBDIVISION  
4.05 ACRES

1  
T153-R102

PARCEL 298-0183  
LOT 1R OF THE REARRANGEMENT OF LOT  
3 OF BLOCK 2 OF THE REARRANGEMENT  
OF LOT 2 OF THE BERGER SECOND  
SUBDIVISION 3RD REARRANGEMENT  
1-153-102  
0.52 ACRES

PARCEL 298-0220  
8-153-101  
0.36 ACRES

PARCEL 298-0230  
LOT 1, BLOCK 5  
BERGER FIRST SUBDIVISION  
IN WILLIAMS COUNTY  
1.12 ACRES

6  
T153-R101

PARCEL 298-0185  
LOT 2R OF THE REARRANGEMENT OF  
LOT 2 OF BLOCK 2 OF THE  
REARRANGEMENT OF LOT 2 OF THE  
BERGER SECOND SUBDIVISION 3RD  
REARRANGEMENT  
1-153-102  
1.57 ACRES

PARCEL 298-0240  
8-153-101  
0.36 ACRES

PARCEL 298-0251  
8-153-101  
1.38 ACRES

PARCEL 298-0951  
8-153-101  
6.33 ACRES

PARCEL 298-0961  
8-153-101  
8.06 ACRES

LEGEND:

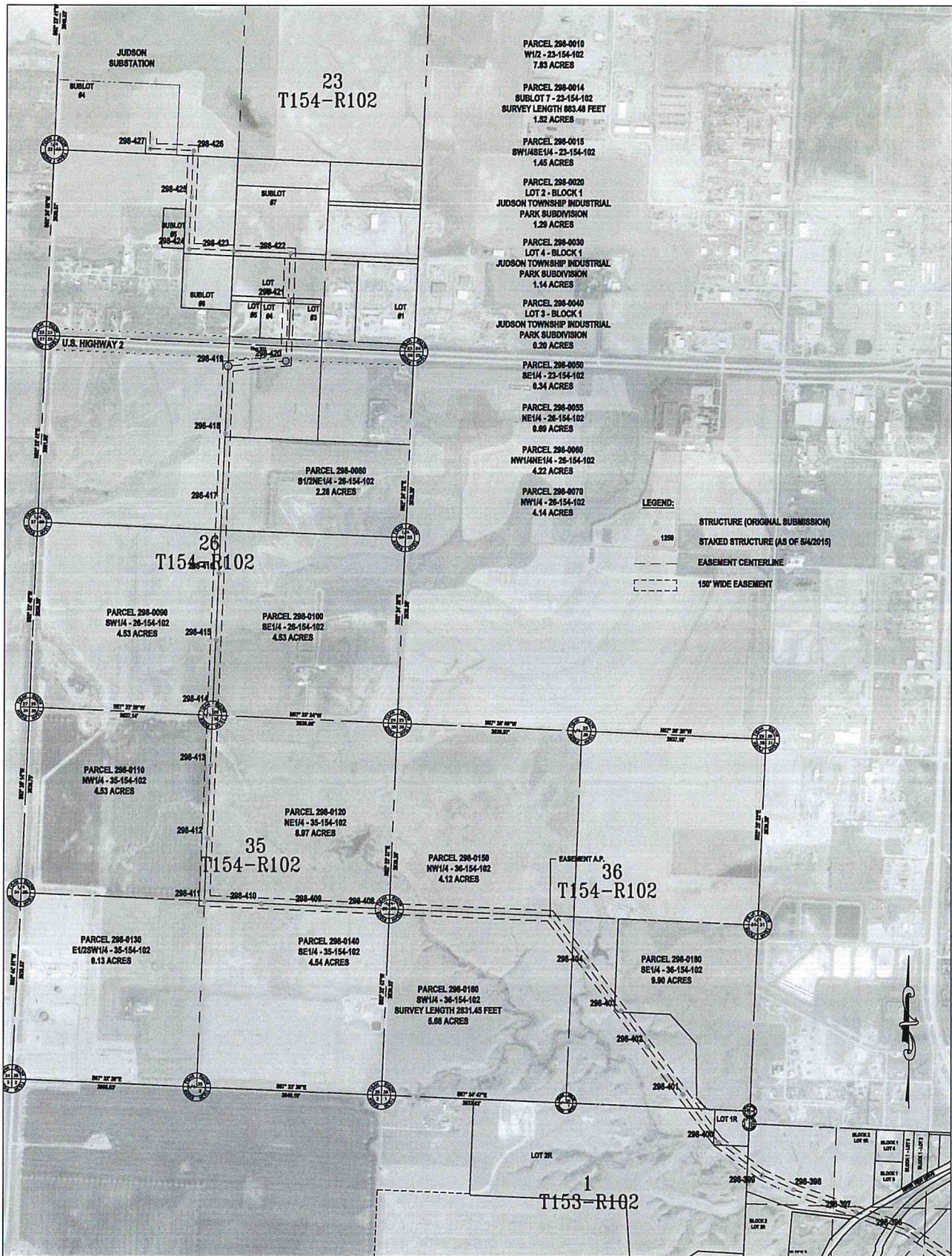
- STRUCTURE (ORIGINAL SUBMISSION)
- 1250 STAKED STRUCTURE (AS OF 04/2015)
- EASEMENT CENTERLINE
- 150' WIDE EASEMENT

Basis of Bearing is NAD83 HD State Plane North Zone - International Feet. All distances are Ground Distances. Combined scale factor = 0.999893141

SEC. 18,19,30,31 - T147N - R98W  
SEC. 13,24,25,36 - T147N - R99W  
MCKENZIE COUNTY, NORTH DAKOTA

STRUCTURE RELOCATE APPROVAL REQUEST  
CASE #PU-11-696  
AVS-NESET 345kV TRANSMISSION LINE





- PARCEL 298-0010  
W1/2 - 23-154-102  
7.93 ACRES
- PARCEL 298-0014  
SUBLLOT 7 - 23-154-102  
SURVEY LENGTH 883.48 FEET  
1.82 ACRES
- PARCEL 298-0015  
SW1/4SE1/4 - 23-154-102  
1.45 ACRES
- PARCEL 298-0020  
LOT 2 - BLOCK 1  
JUDSON TOWNSHIP INDUSTRIAL  
PARK SUBDIVISION  
1.29 ACRES
- PARCEL 298-0030  
LOT 4 - BLOCK 1  
JUDSON TOWNSHIP INDUSTRIAL  
PARK SUBDIVISION  
1.14 ACRES
- PARCEL 298-0040  
LOT 3 - BLOCK 1  
JUDSON TOWNSHIP INDUSTRIAL  
PARK SUBDIVISION  
0.20 ACRES
- PARCEL 298-0050  
SE1/4 - 23-154-102  
0.34 ACRES
- PARCEL 298-0055  
NE1/4 - 26-154-102  
0.89 ACRES
- PARCEL 298-0060  
NW1/4NE1/4 - 26-154-102  
4.22 ACRES
- PARCEL 298-0070  
NW1/4 - 28-154-102  
4.14 ACRES

**LEGEND:**

- STRUCTURE (ORIGINAL SUBMISSION)
- STAKED STRUCTURE (AS OF 8/4/2015)
- EASEMENT CENTERLINE
- 150' WIDE EASEMENT

Basis of Bearing is NAD83 ND State Plane North Zone - International Feet. All distances are Ground Distances. Combined scale factor = 0.999993141

SEC. 31,32 - T148N - R98W  
SEC. 5,6,7,8,17,18 - T147N - R98W  
MCKENZIE COUNTY, NORTH DAKOTA

STRUCTURE RELOCATE APPROVAL REQUEST  
CASE #PU-11-696  
AVS-NESET 345kV TRANSMISSION LINE  
BASIN ELECTRIC  
POWER COOPERATIVE  
A Touchstone Energy Cooperative