

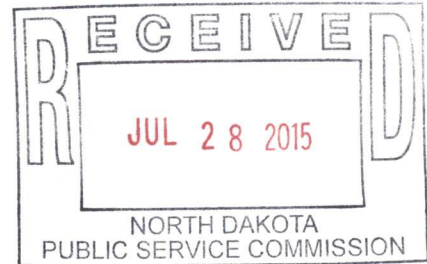
**BASIN ELECTRIC
POWER COOPERATIVE**

1717 EAST INTERSTATE AVENUE
BISMARCK, NORTH DAKOTA 58503
PHONE: 701-223-0441 FAX: 701-557-5336



July 28, 2015

Darrell Nitschke
Executive Director
North Dakota Public Service Commission
600 East Boulevard; Dept. 408
Bismarck, ND 58505-0480



Basin Electric Power Cooperative
AVS to Neset 345-kV Transmission Project Siting Application
PU-11-696

Dear Mr. Nitschke:

Enclosed you will find a Structure Relocation Request for the AVS to Neset 345-kV Transmission Project. The request has been filed electronically to the PU-11-696 Docket and is also contained within the enclosed electronic CD.

The structure relocation requests are all within the established corridor as reflected in the Second Amended Corridor Certificate No. 152.

For inquiries regarding the application, please call Cris Miller, Senior Environmental Project Specialist at (701) 557-5635.

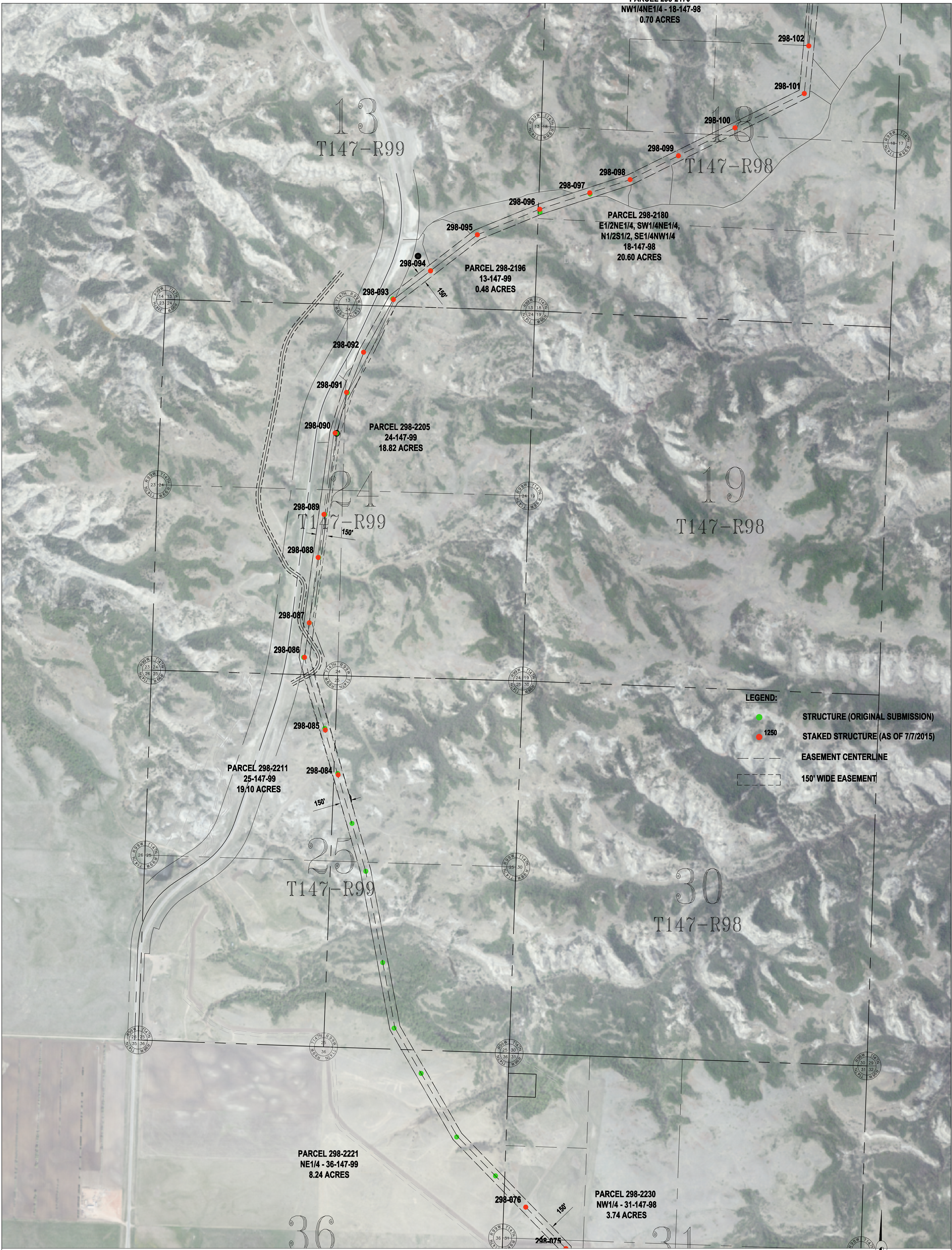
Sincerely,

A handwritten signature in black ink that reads "Cris Miller".

Cris Miller
Senior Environmental Project Specialist

/ser
Enclosure

cc: Casey Jacobson
Amanda Wangler

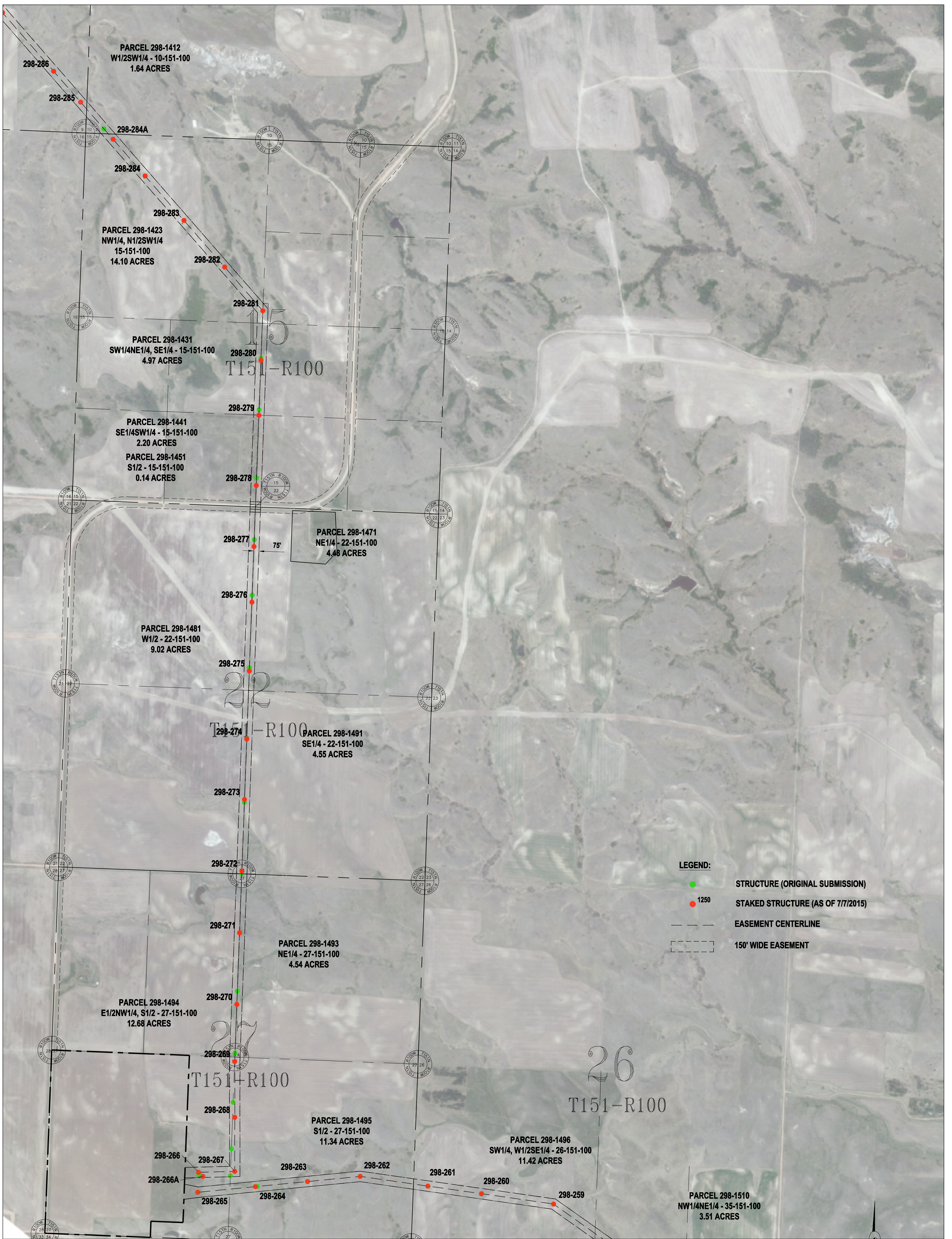


Basis of Bearing is NAD83 ND State Plane North Zone - International Feet. All distances are Ground Distance. Combined scale factor = 0.999893141

SEC. 19,20,29,30,31,32 - T146N - R98W
MCKENZIE COUNTY, NORTH DAKOTA

STRUCTURE RELOCATE APPROVAL REQUEST
CASE #PU-11-696
AVS-NESET 345kV TRANSMISSION LINE





Basis of Bearing is NAD83 ND State Plane North Zone - International Feet. All distances are Ground Distance. Combined scale factor = 0.999893141

SEC. 19,20,29,30,31,32 - T146N - R98W
MCKENZIE COUNTY, NORTH DAKOTA

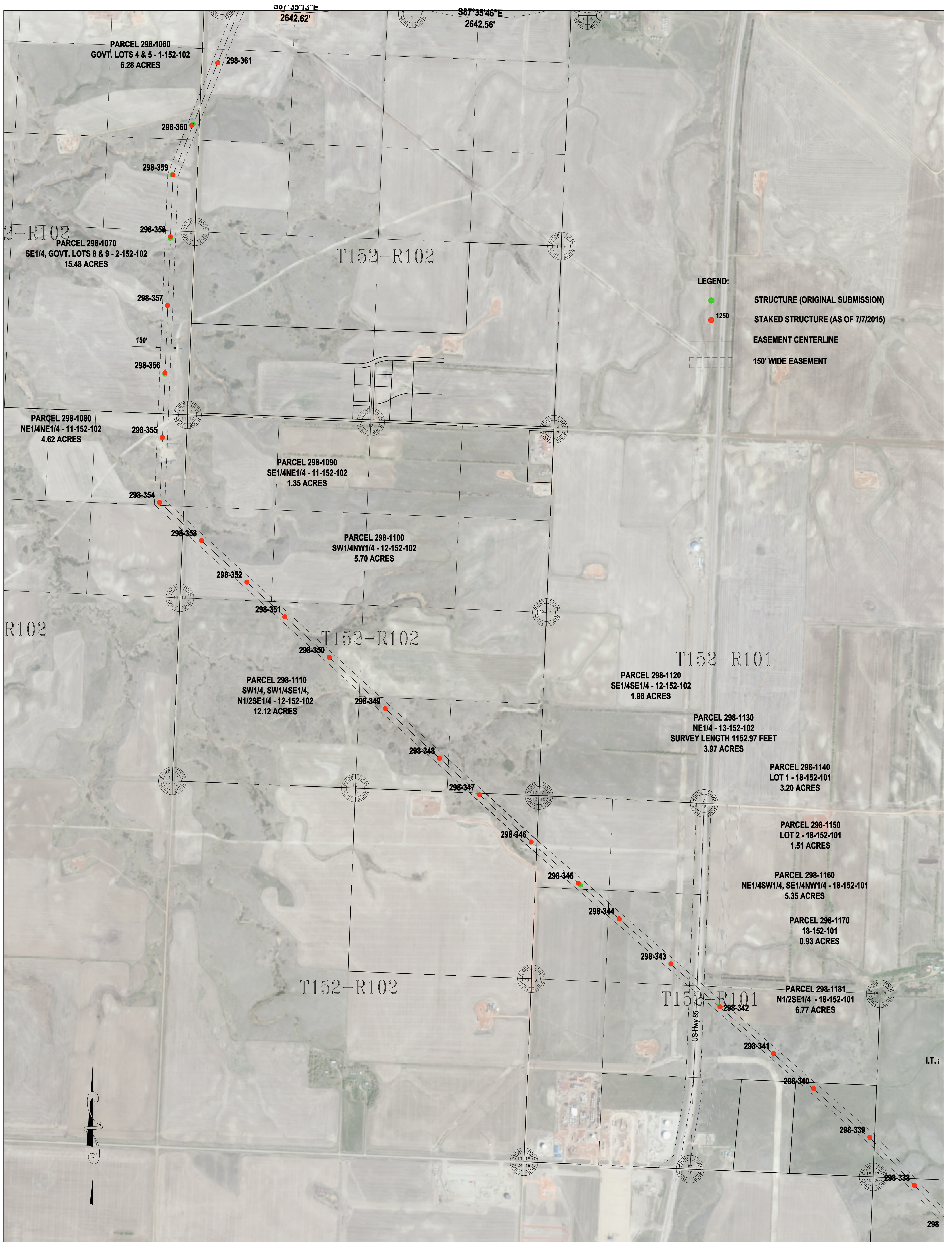
STRUCTURE RELOCATE APPROVAL REQUEST
CASE #PU-11-696
AVS-NESET 345kV TRANSMISSION LINE



**BASIN ELECTRIC
POWER COOPERATIVE**
A Touchstone Energy Cooperative

SHEET 2 OF 4

REV. NO.
0

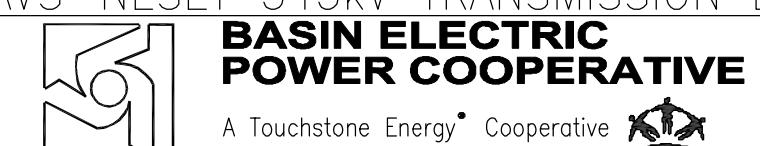


- LEGEND:**
- STRUCTURE (ORIGINAL SUBMISSION)
 - 1250 STRUCTURE (AS OF 7/7/2015)
 - EASEMENT CENTERLINE
 - 150' WIDE EASEMENT

Basis of Bearing is NAD83 ND State Plane North Zone - International Feet. All distances are Ground Distance. Combined scale factor = 0.999893141

SEC. 5,6,7,8,17,18 - T146N - R98W
MCKENZIE COUNTY, NORTH DAKOTA

STRUCTURE RELOCATE APPROVAL REQUEST
CASE #PU-11-696
AVS-NESET 345kV TRANSMISSION LINE



**BASIN ELECTRIC
POWER COOPERATIVE**
A Touchstone Energy Cooperative

SHEET 3 OF 4

REV. NO.
0



- PARCEL 298-0010
W1/2 - 23-154-102
7.83 ACRES
- PARCEL 298-0014
SUBLOT 7 - 23-154-102
SURVEY LENGTH 883.48 FEET
1.52 ACRES
- PARCEL 298-0015
SW1/4SE1/4 - 23-154-102
1.45 ACRES
- PARCEL 298-0020
LOT 2 - BLOCK 1
JUDSON TOWNSHIP INDUSTRIAL
PARK SUBDIVISION
1.29 ACRES
- PARCEL 298-0030
LOT 4 - BLOCK 1
JUDSON TOWNSHIP INDUSTRIAL
PARK SUBDIVISION
1.14 ACRES
- PARCEL 298-0040
LOT 3 - BLOCK 1
JUDSON TOWNSHIP INDUSTRIAL
PARK SUBDIVISION
0.20 ACRES
- PARCEL 298-0050
SE1/4 - 23-154-102
0.34 ACRES
- PARCEL 298-0055
NE1/4 - 26-154-102
0.69 ACRES
- PARCEL 298-0060
NW1/4NE1/4 - 26-154-102
4.22 ACRES
- PARCEL 298-0070
NW1/4 - 26-154-102
4.14 ACRES

LEGEND:

- STRUCTURE (ORIGINAL SUBMISSION)
- 1250 STAKED STRUCTURE (AS OF 7/7/2015)
- EASEMENT CENTERLINE
- 150' WIDE EASEMENT

Basis of Bearing is NAD83 ND State Plane North Zone - International Feet. All distances are Ground Distance. Combined scale factor = 0.999893141

SEC. 31,32 - T148N - R98W
SEC. 5,6,7,8,17,18 - T147N - R98W
MCKENZIE COUNTY, NORTH DAKOTA

STRUCTURE RELOCATE APPROVAL REQUEST
CASE #PU-11-696
AVS-NESET 345kV TRANSMISSION LINE
BASIN ELECTRIC POWER COOPERATIVE
A Touchstone Energy Cooperative