

LEGEND:

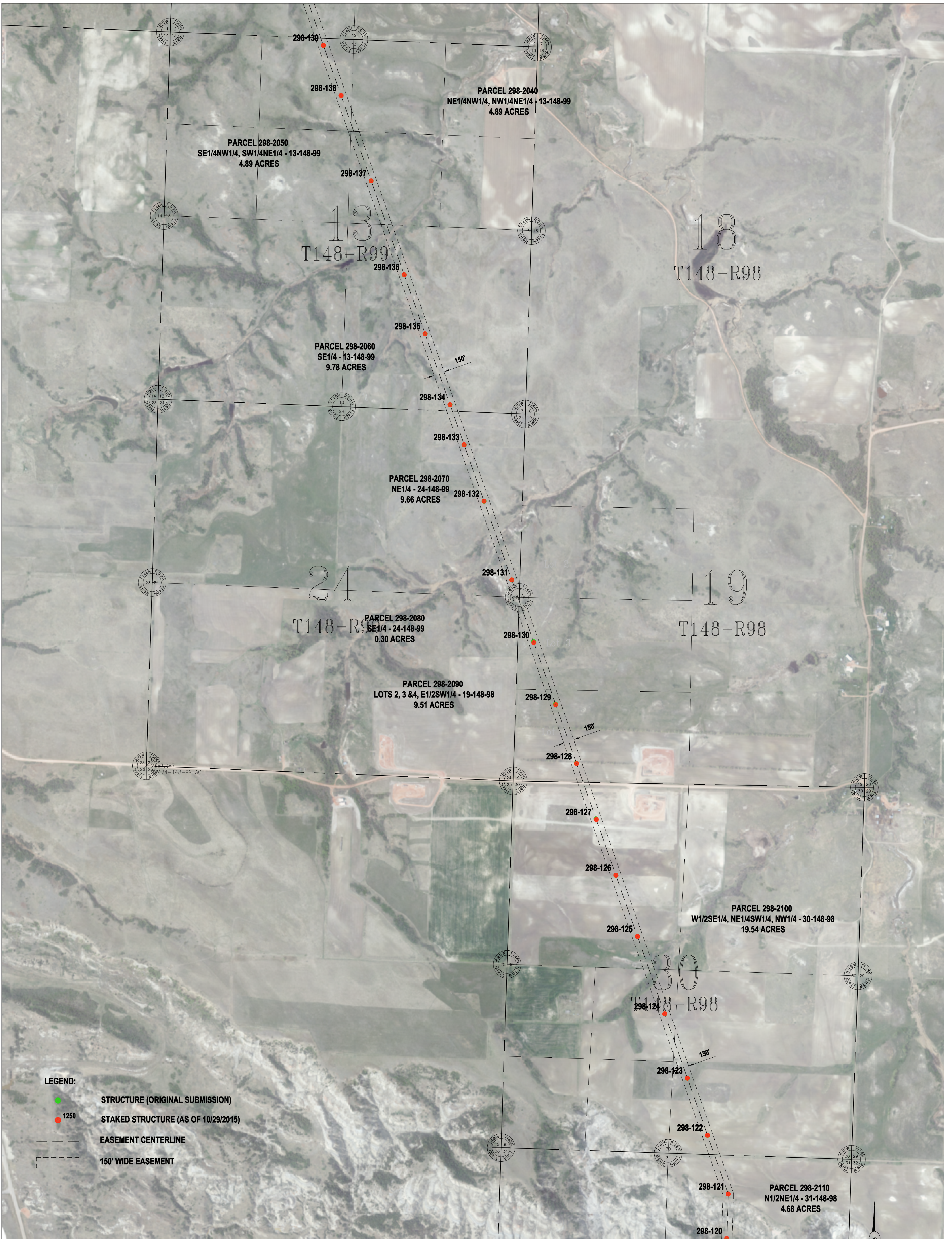
- STRUCTURE (ORIGINAL SUBMISSION)
- 1250 STRUCTURE (AS OF 10/29/15)
- EASEMENT CENTERLINE
- 150' WIDE EASEMENT

Basis of Bearing is NAD83 ND State Plane North Zone - International Feet. All distances are Ground Distance. Combined scale factor = 0.999893141

SEC. 19,20,29,30,31,32 - T146N - R98W
MCKENZIE COUNTY, NORTH DAKOTA

STRUCTURE RELOCATE APPROVAL REQUEST
CASE #PU-11-696
AVS-NESET 345kV TRANSMISSION LINE





LEGEND:

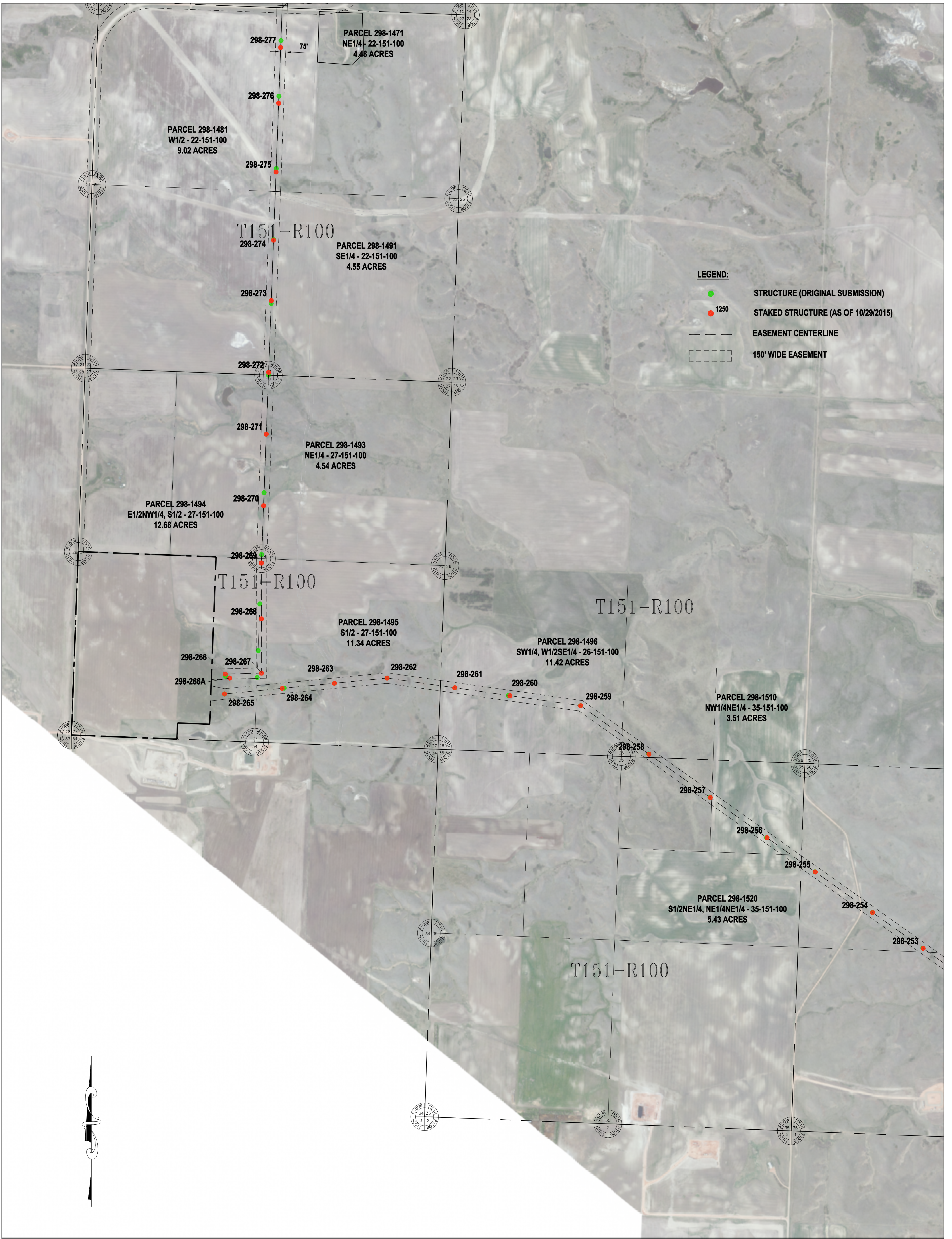
- STRUCTURE (ORIGINAL SUBMISSION)
- 1250 STAKED STRUCTURE (AS OF 10/29/2015)
- EASEMENT CENTERLINE
- 150' WIDE EASEMENT

Basis of Bearing is NAD83 ND State Plane North Zone - International Feet. All distances are Ground Distance. Combined scale factor = 0.999893141

SEC. 19,20,29,30,31,32 - T146N - R98W
MCKENZIE COUNTY, NORTH DAKOTA

STRUCTURE RELOCATE APPROVAL REQUEST
CASE #PU-11-696
AVS-NESET 345kV TRANSMISSION LINE





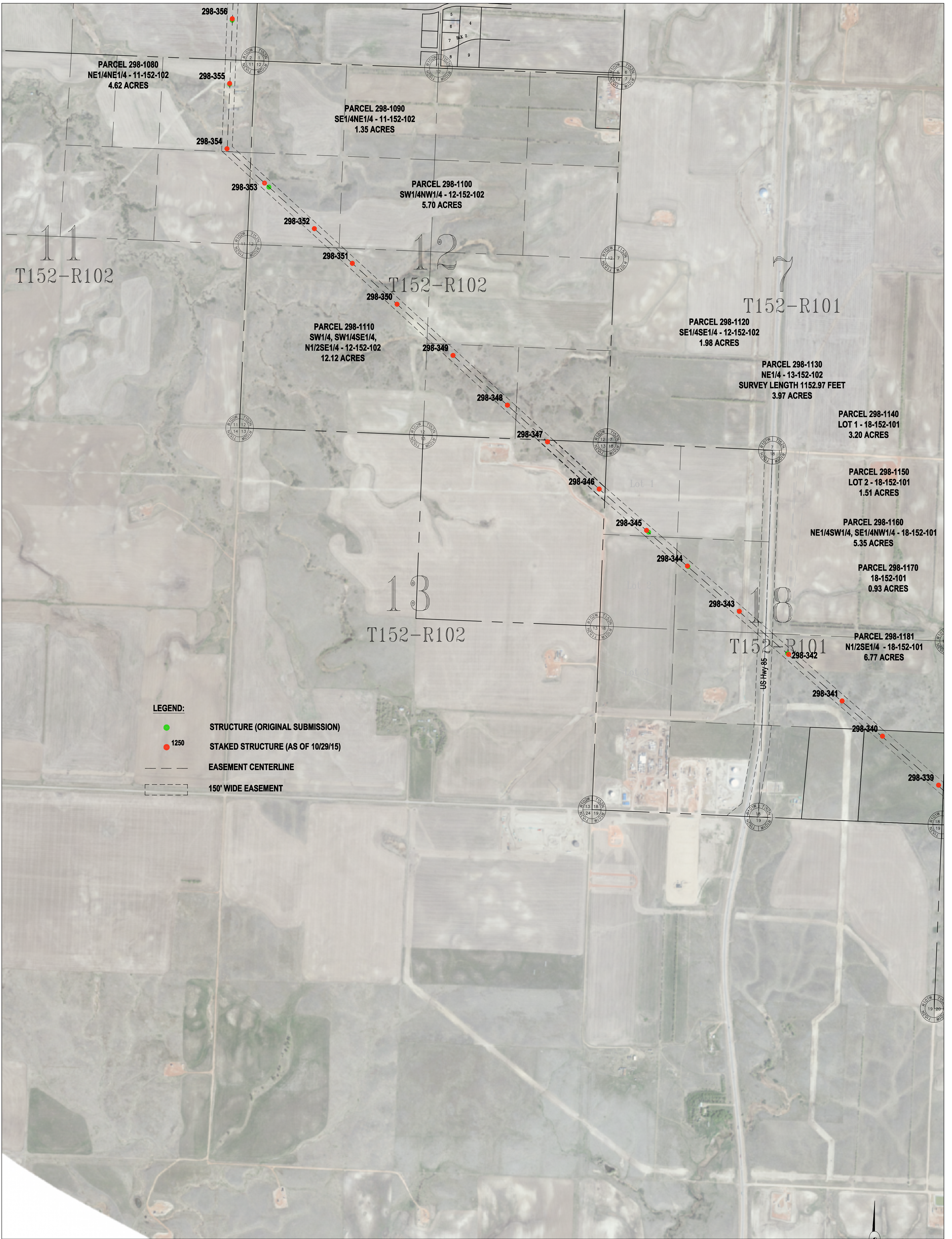
Basis of Bearing is NAD83 ND State Plane North Zone - International Feet. All distances are Ground Distance. Combined scale factor = 0.999893141

SEC. 5,6,7,8,17,18 - T146N - R98W
MCKENZIE COUNTY, NORTH DAKOTA

STRUCTURE RELOCATE APPROVAL REQUEST
CASE #PU-11-696
AVS-NESET 345kV TRANSMISSION LINE



**BASIN ELECTRIC
POWER COOPERATIVE**
A Touchstone Energy Cooperative



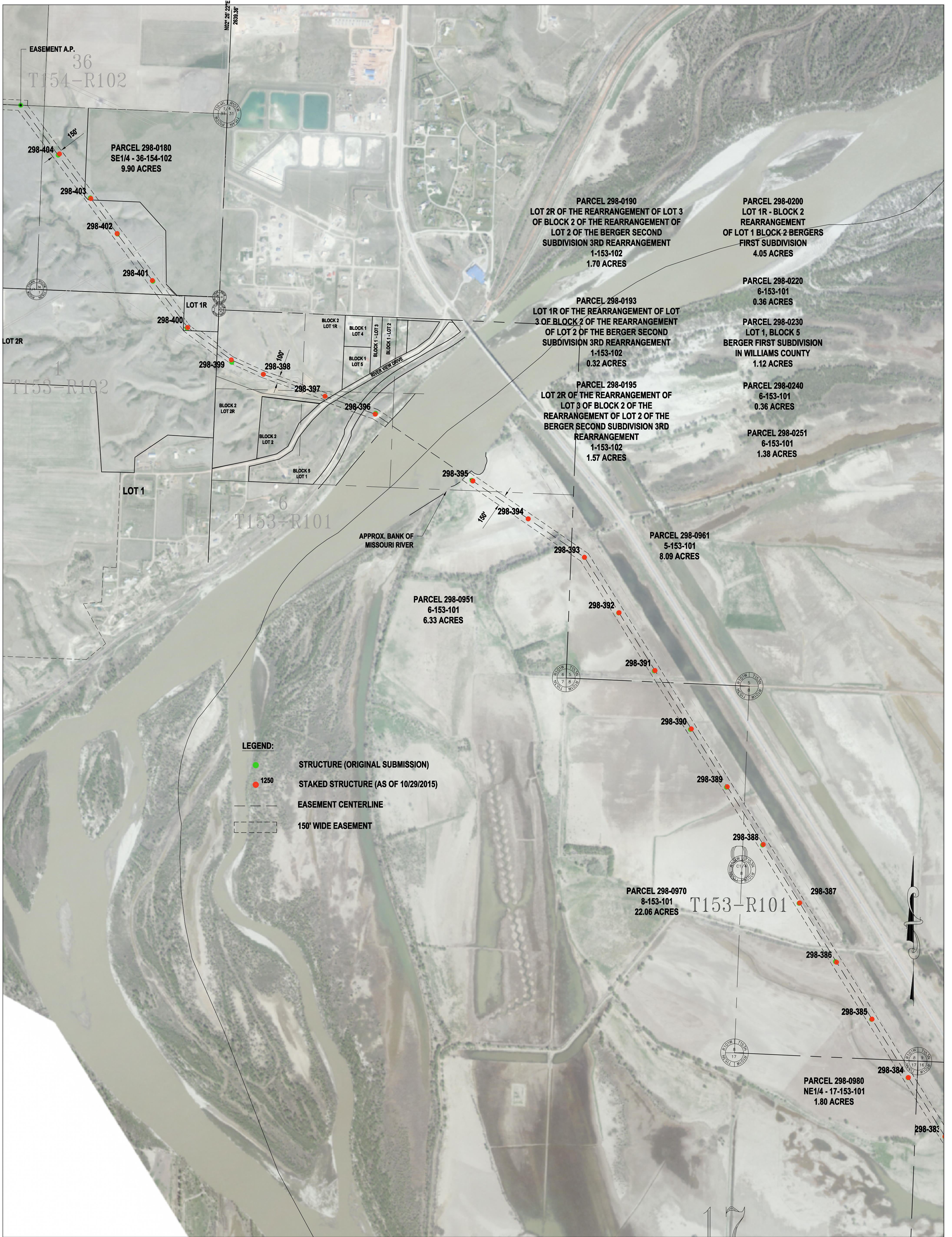
- LEGEND:**
- STRUCTURE (ORIGINAL SUBMISSION)
 - 1250 STRUCTURE (AS OF 10/29/15)
 - EASEMENT CENTERLINE
 - 150' WIDE EASEMENT

Basis of Bearing is NAD83 ND State Plane North Zone - International Feet. All distances are Ground Distance. Combined scale factor = 0.999893141

SEC. 19,20,29,30,31,32 - T146N - R98W
MCKENZIE COUNTY, NORTH DAKOTA

STRUCTURE RELOCATE APPROVAL REQUEST
CASE #PU-11-696
AVS-NESET 345kV TRANSMISSION LINE





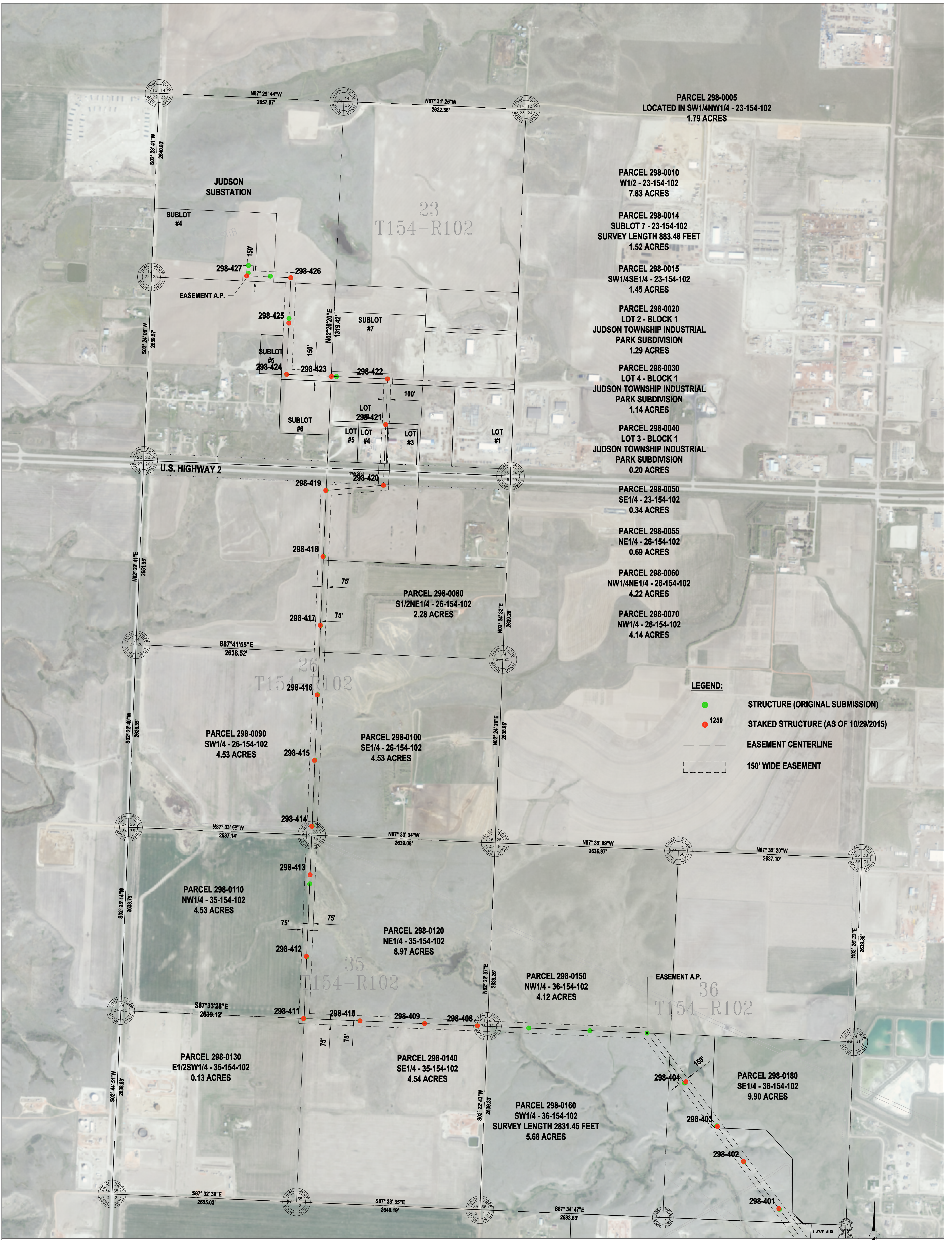
Basis of Bearing is NAD83 ND State Plane North Zone - International Feet. All distances are Ground Distance. Combined scale factor = 0.999893141

SEC. 31,32 - T148N - R98W
 SEC. 5,6,7,8,17,18 - T147N - R98W
 MCKENZIE COUNTY, NORTH DAKOTA

STRUCTURE RELOCATE APPROVAL REQUEST
 CASE #PU-11-696
 AVS-NESET 345kV TRANSMISSION LINE



**BASIN ELECTRIC
 POWER COOPERATIVE**
 A Touchstone Energy Cooperative



PARCEL 298-0005
LOCATED IN SW1/4NW1/4 - 23-154-102
1.79 ACRES

PARCEL 298-0010
W1/2 - 23-154-102
7.83 ACRES

PARCEL 298-0014
SUBLOT 7 - 23-154-102
SURVEY LENGTH 883.48 FEET
1.52 ACRES

PARCEL 298-0015
SW1/4SE1/4 - 23-154-102
1.45 ACRES

PARCEL 298-0020
LOT 2 - BLOCK 1
JUDSON TOWNSHIP INDUSTRIAL
PARK SUBDIVISION
1.29 ACRES

PARCEL 298-0030
LOT 4 - BLOCK 1
JUDSON TOWNSHIP INDUSTRIAL
PARK SUBDIVISION
1.14 ACRES

PARCEL 298-0040
LOT 3 - BLOCK 1
JUDSON TOWNSHIP INDUSTRIAL
PARK SUBDIVISION
0.20 ACRES

PARCEL 298-0050
SE1/4 - 23-154-102
0.34 ACRES

PARCEL 298-0055
NE1/4 - 26-154-102
0.69 ACRES

PARCEL 298-0060
NW1/4NE1/4 - 26-154-102
4.22 ACRES

PARCEL 298-0070
NW1/4 - 26-154-102
4.14 ACRES

LEGEND:

- STRUCTURE (ORIGINAL SUBMISSION)
- 1250 STAKED STRUCTURE (AS OF 10/29/2015)
- EASEMENT CENTERLINE
- 150' WIDE EASEMENT

Basis of Bearing is NAD83 ND State Plane North Zone - International Feet. All distances are Ground Distance. Combined scale factor = 0.999893141

SEC. 19,20,29,30,31,32 - T146N - R98W
MCKENZIE COUNTY, NORTH DAKOTA

STRUCTURE RELOCATE APPROVAL REQUEST
CASE #PU-11-696
AVS-NESET 345kV TRANSMISSION LINE



**BASIN ELECTRIC
POWER COOPERATIVE**
A Touchstone Energy Cooperative

