

**BASIN ELECTRIC POWER COOPERATIVE**

**ROUTE AND STRUCTURE LOCATIONS FOR  
AVS-NESET 345kV TRANSMISSION PROJECT**

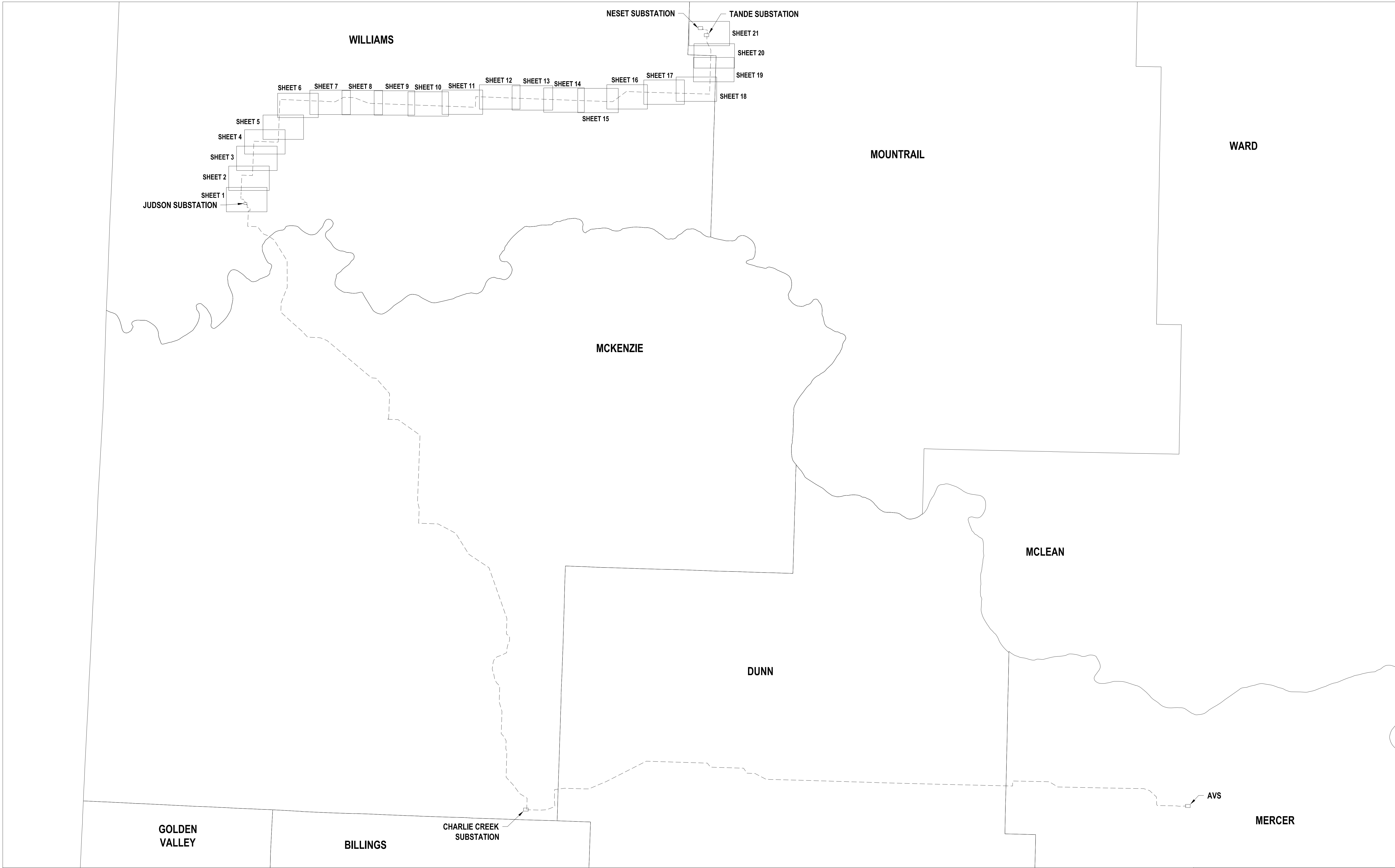
**LINE 291 - JUDSON TO TANDE SEGMENT**

**LINE 289 - NESET TO TANDE SEGMENT**

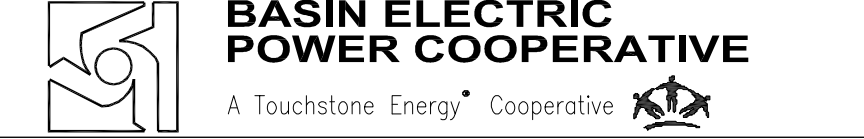
**NORTH DAKOTA PUBLIC SERVICE COMMISSION**

**CASE NO: PU-11-696**

**MARCH 2016**



PSC SUBMITTAL FOR LINE 291  
CASE #PU-11-696  
SHEET INDEX MAP



**BASIN ELECTRIC  
POWER COOPERATIVE**  
A Touchstone Energy Cooperative



**LEGEND:**

- STRUCTURES PREVIOUSLY PERMITTED
- STRUCTURES SUBMITTED AUGUST 2013
- STRUCTURE - STAKED FOR CONSTRUCTION (AS OF 3-16-2016)
- 150' WIDE EASEMENT
- PREVIOUSLY CONSTRUCTED EASEMENT CENTERLINE

Basis of Bearing is NAD83 ND State Plane North Zone - International Feet. All distances are Ground Distance. Combined scale factor = 0.999840332

SEC. 2,3,10 & 11 – T154N – R102W  
WILLIAMS COUNTY, NORTH DAKOTA

**NOTE:**  
CONSTRUCTED AND PERMITTED IN 2012 AS PART OF MOUNTRAIL WILLIAMS ELECTRIC COOPERATIVE'S 115kV PROJECT

PREVIOUSLY CONSTRUCTED  
MOUNTRAIL WILLIAMS 115kV  
TRANSMISSION LINE

**BASIN ELECTRIC  
POWER COOPERATIVE**  
A Touchstone Energy Cooperative



**LEGEND:**

- STRUCTURES PREVIOUSLY PERMITTED
- STRUCTURES AUGUST 2013
- STRUCTURE - STAKED FOR CONSTRUCTION (AS OF 3-16-2016)
- 150' WIDE EASEMENT
- EASEMENT CENTERLINE

Basis of Bearing is NAD83 ND State Plane North Zone - International Feet. All distances are Ground Distance. Combined scale factor = 0.999840332

SEC. 2,3,10 & 11 – T154N – R102W  
WILLIAMS COUNTY, NORTH DAKOTA

**NOTE:**  
STRUCTURE PLACEMENT AS OF 3-16-2016

PSC SUBMITTAL FOR LINE 291  
CASE #PU-11-696  
345kV TRANSMISSION LINE  
**BASIN ELECTRIC POWER COOPERATIVE**  
A Touchstone Energy Cooperative



Basis of Bearing is NAD83 ND State Plane North Zone - International Feet. All distances are Ground Distance. Combined scale factor = 0.999840332

SEC. 26 & 35 - T155N - R102W  
WILLIAMS COUNTY, NORTH DAKOTA

NOTE:  
STRUCTURE PLACEMENT AS OF 3-16-2016

PSC SUBMITTAL FOR LINE 291  
CASE #PU-11-696  
345kV TRANSMISSION LINE  
**BASIN ELECTRIC POWER COOPERATIVE**  
A Touchstone Energy Cooperative

- LEGEND:**
- STRUCTURE AUGUST 2013
  - STRUCTURE - STAKED FOR CONSTRUCTION (AS OF 3-16-2016)
  - 150' WIDE EASEMENT
  - EASEMENT CENTERLINE

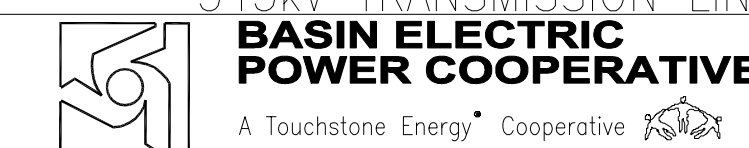


Basis of Bearing is NAD83 ND State Plane North Zone - International Feet. All distances are Ground Distance. Combined scale factor = 0.999840332

SEC. 23,24 & 26 - T155N - R102W  
 SEC. 17,19 & 20 - T155N - R101W  
 WILLIAMS COUNTY, NORTH DAKOTA

**NOTE:**  
 STRUCTURE PLACEMENT AS OF 3-16-2016

PSC SUBMITTAL FOR LINE 291  
 CASE #PU-11-696  
 345kV TRANSMISSION LINE



- LEGEND:**
- STRUCTURE AUGUST 2013
  - STRUCTURE - STAKED FOR CONSTRUCTION (AS OF 3-16-2016)
  - - - 150' WIDE EASEMENT
  - - - EASEMENT CENTERLINE



Basis of Bearing is NAD83 ND State Plane North Zone - International Feet. All distances are Ground Distance. Combined scale factor = 0.999840332

SEC. 8 & 17 - T155N - R101W  
WILLIAMS COUNTY, NORTH DAKOTA

**NOTE:**  
STRUCTURE PLACEMENT AS OF 3-16-2016

PSC SUBMITTAL FOR LINE 291  
CASE #PU-11-696  
345kV TRANSMISSION LINE  
**BASIN ELECTRIC POWER COOPERATIVE**  
A Touchstone Energy Cooperative

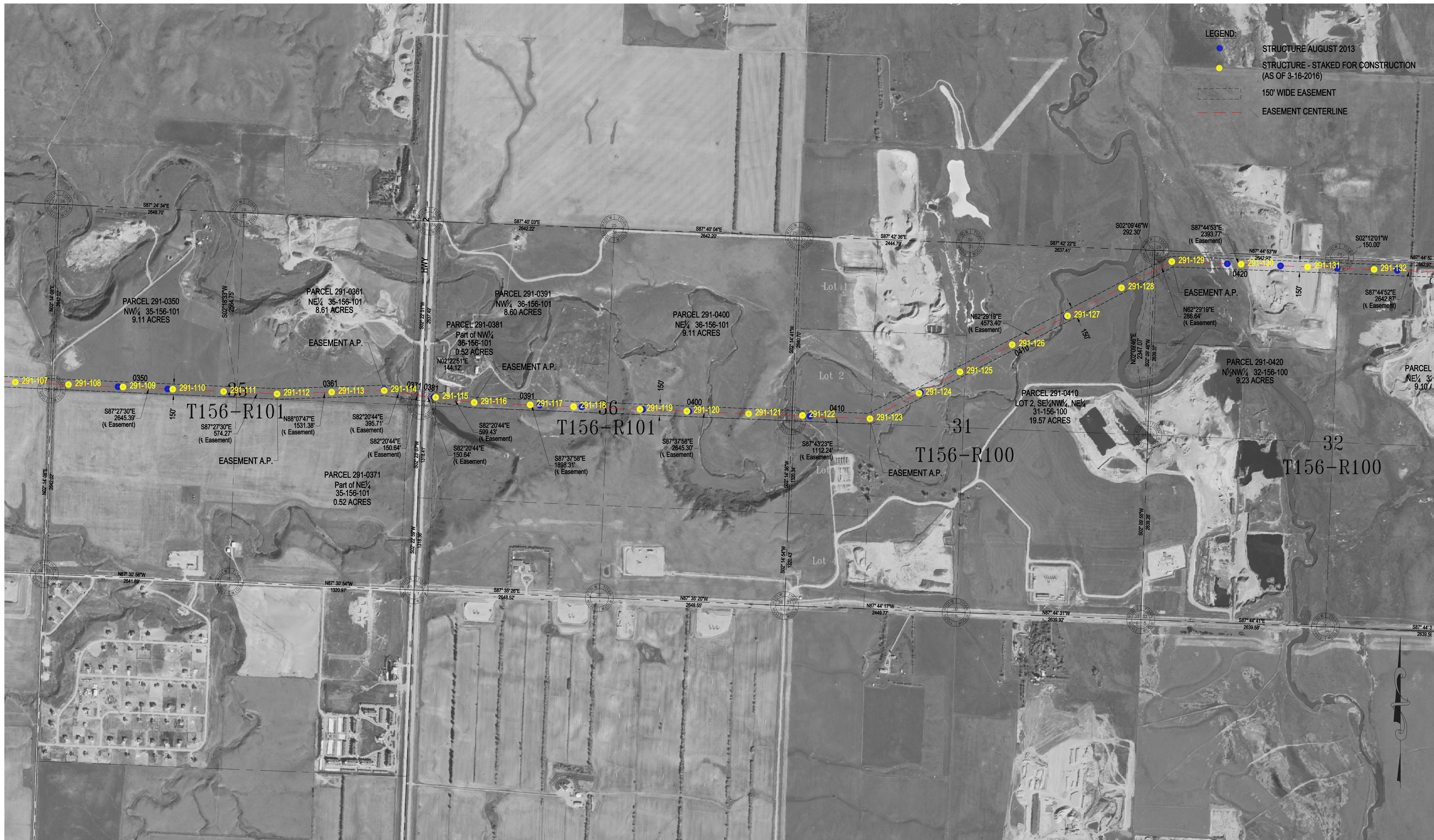


Basis of Bearing is NAD83 ND State Plane North Zone - International Feet. All distances are Ground Distance. Combined scale factor = 0.999840332

SEC. 5 - T155N - R101W  
 SEC. 32,33,34,35 - T156N - R101W  
 WILLIAMS COUNTY, NORTH DAKOTA

**NOTE:**  
 STRUCTURE PLACEMENT AS OF 3-16-2016

PSC SUBMITTAL FOR LINE 291  
 CASE #PU-11-696  
 345kV TRANSMISSION LINE  
**BASIN ELECTRIC POWER COOPERATIVE**  
 A Touchstone Energy Cooperative

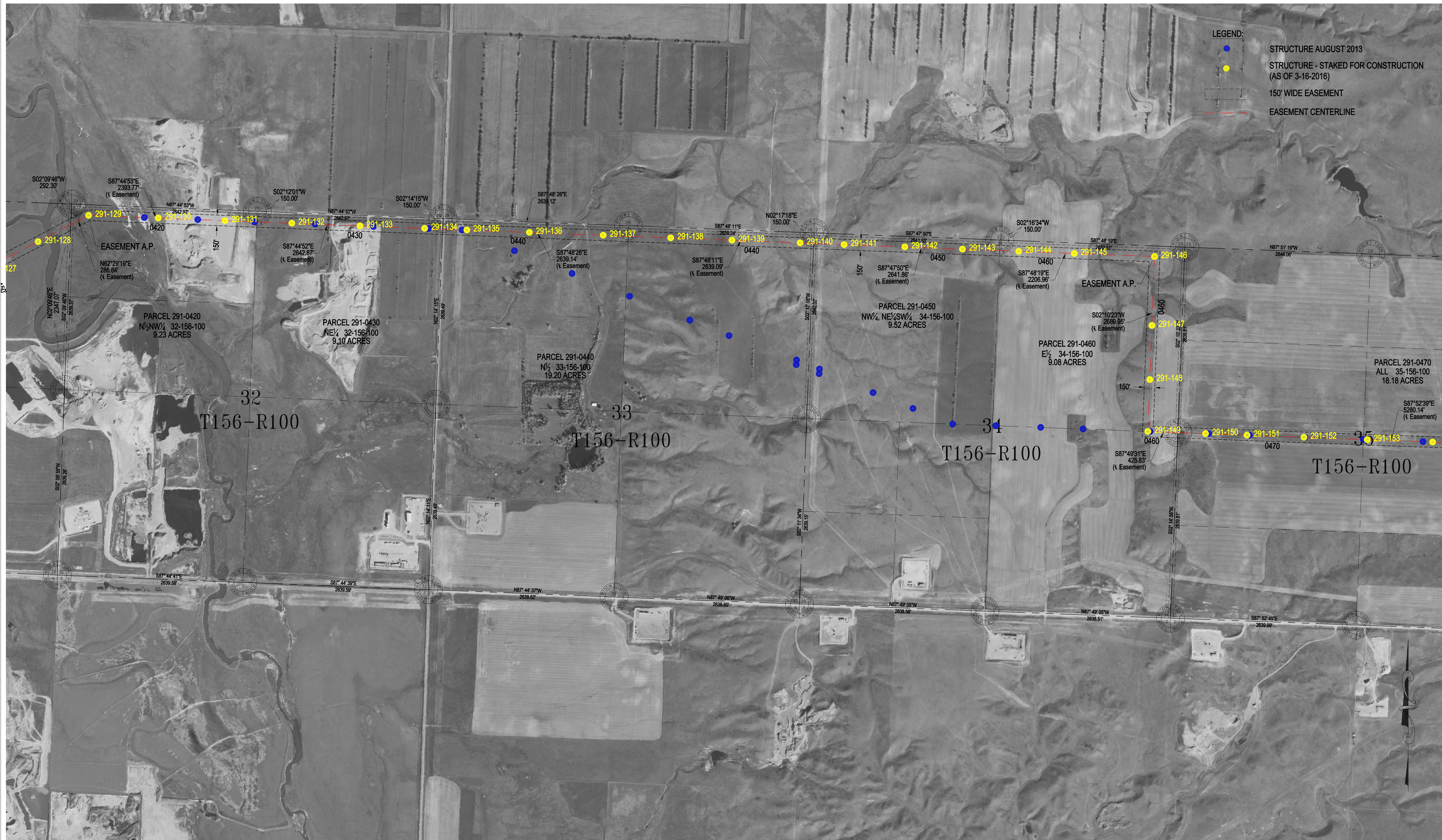


Basis of Bearing is NAD83 ND State Plane North Zone - International Feet. All distances are Ground Distance. Combined scale factor = 0.999840332

SEC. 31 & 32 - T156N - R100W  
 SEC. 35 & 36 - T156N - R101W  
 WILLIAMS COUNTY, NORTH DAKOTA

NOTE:  
 STRUCTURE PLACEMENT AS OF 3-16-2016

PSC SUBMITTAL FOR LINE 291  
 CASE #PU-11-696  
 345kV TRANSMISSION LINE  
**BASIN ELECTRIC  
 POWER COOPERATIVE**  
 A Touchstone Energy Cooperative



- LEGEND:**
- STRUCTURE AUGUST 2013
  - STRUCTURE - STAKED FOR CONSTRUCTION (AS OF 3-16-2016)
  - 150' WIDE EASEMENT
  - EASEMENT CENTERLINE

Basis of Bearing is NAD83 ND State Plane North Zone - International Feet. All distances are Ground Distance. Combined scale factor = 0.999840332

SEC. 32,33,34 & 35 - T156N - R100W  
WILLIAMS COUNTY, NORTH DAKOTA

**NOTE:**  
STRUCTURE PLACEMENT AS OF 3-16-2016

PSC SUBMITTAL FOR LINE 291  
CASE #PU-11-696  
345kV TRANSMISSION LINE  
**BASIN ELECTRIC  
POWER COOPERATIVE**  
A Touchstone Energy Cooperative



Basis of Bearing is NAD83 ND State Plane North Zone - International Feet. All distances are Ground Distance. Combined scale factor = 0.999840332

SEC. 35 & 36 - T156N - R100W  
 SEC. 31 & 32 - T156N - R99W  
 WILLIAMS COUNTY, NORTH DAKOTA

NOTE:  
 STRUCTURE PLACEMENT AS OF 3-16-2016

PSC SUBMITTAL FOR LINE 291  
 CASE #PU-11-696  
 345kV TRANSMISSION LINE  
**BASIN ELECTRIC POWER COOPERATIVE**  
 A Touchstone Energy Cooperative



**LEGEND:**

- STRUCTURE AUGUST 2013
- STRUCTURE - STAKED FOR CONSTRUCTION (AS OF 3-16-2016)
- - - 150' WIDE EASEMENT
- EASEMENT CENTERLINE

Basis of Bearing is NAD83 ND State Plane North Zone - International Feet. All distances are Ground Distance. Combined scale factor = 0.999840332

SEC. 32,33,34,35 - T156N - R99W  
WILLIAMS COUNTY, NORTH DAKOTA

**NOTE:**  
STRUCTURE PLACEMENT AS OF 3-16-2016

PSC SUBMITTAL FOR LINE 291  
CASE #PU-11-696  
345kV TRANSMISSION LINE  
**BASIN ELECTRIC POWER COOPERATIVE**  
A Touchstone Energy Cooperative



**LEGEND:**

- STRUCTURE AUGUST 2013
- STRUCTURE - STAKED FOR CONSTRUCTION (AS OF 3-16-2016)
- - - 150' WIDE EASEMENT
- - - EASEMENT CENTERLINE

Basis of Bearing is NAD83 ND State Plane North Zone - International Feet. All distances are Ground Distance. Combined scale factor = 0.999840332

SEC. 35 & 36 - T156N - R99W  
 SEC. 29, 31 & 32 - T156N - R98W  
 WILLIAMS COUNTY, NORTH DAKOTA

**NOTE:**  
 STRUCTURE PLACEMENT AS OF 3-16-2016

PSC SUBMITTAL FOR LINE 291  
 CASE #PU-11-696  
 345kV TRANSMISSION LINE  
**BASIN ELECTRIC POWER COOPERATIVE**  
 A Touchstone Energy Cooperative



**LEGEND:**

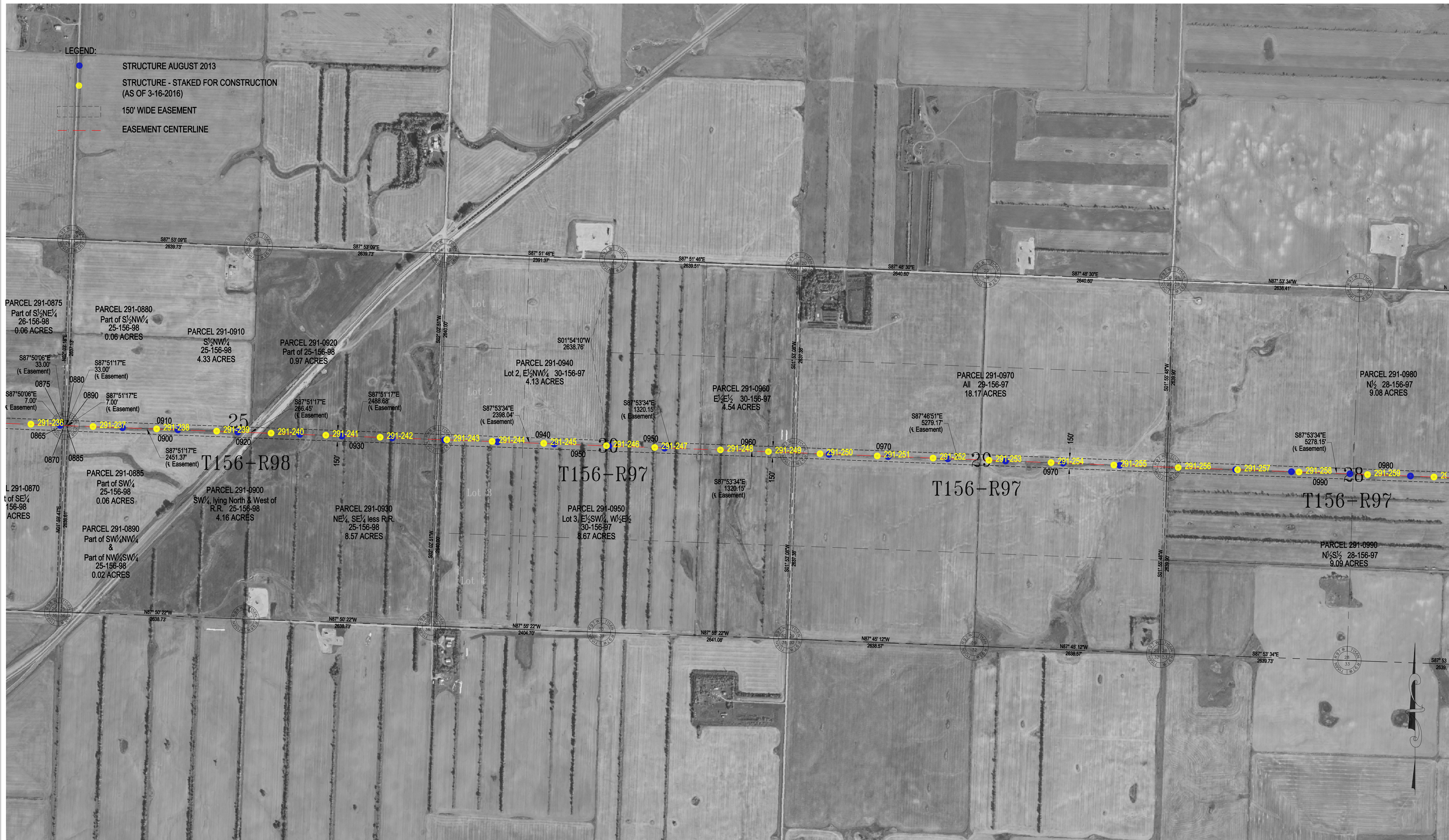
- STRUCTURE AUGUST 2013
- STRUCTURE - STAKED FOR CONSTRUCTION (AS OF 3-16-2016)
- - - 150' WIDE EASEMENT
- - - EASEMENT CENTERLINE

Basis of Bearing is NAD83 ND State Plane North Zone - International Feet. All distances are Ground Distance. Combined scale factor = 0.999840332

SEC. 25,26,27 & 28 - T156N - R98W  
WILLIAMS COUNTY, NORTH DAKOTA

**NOTE:**  
STRUCTURE PLACEMENT AS OF 3-16-2016

PSC SUBMITTAL FOR LINE 291  
CASE #PU-11-696  
345kV TRANSMISSION LINE  
**BASIN ELECTRIC POWER COOPERATIVE**  
A Touchstone Energy Cooperative



Basis of Bearing is NAD83 ND State Plane North Zone - International Feet. All distances are Ground Distance. Combined scale factor = 0.999840332

SEC. 25 - T156N - R98W  
 SEC. 28,29 & 30 - T156N - R97W  
 WILLIAMS COUNTY, NORTH DAKOTA

**NOTE:**  
 STRUCTURE PLACEMENT AS OF 3-16-2016

PSC SUBMITTAL FOR LINE 291  
 CASE #PU-11-696  
 345KV TRANSMISSION LINE

**BASIN ELECTRIC POWER COOPERATIVE**  
 A Touchstone Energy Cooperative



Basis of Bearing is NAD83 ND State Plane North Zone - International Feet. All distances are Ground Distance. Combined scale factor = 0.999840332

SEC. 25,26,27 & 28 - T156N - R97W  
WILLIAMS COUNTY, NORTH DAKOTA

**NOTE:**  
STRUCTURE PLACEMENT AS OF 3-16-2016

PSC SUBMITTAL FOR LINE 291  
CASE #PU-11-696  
345kV TRANSMISSION LINE





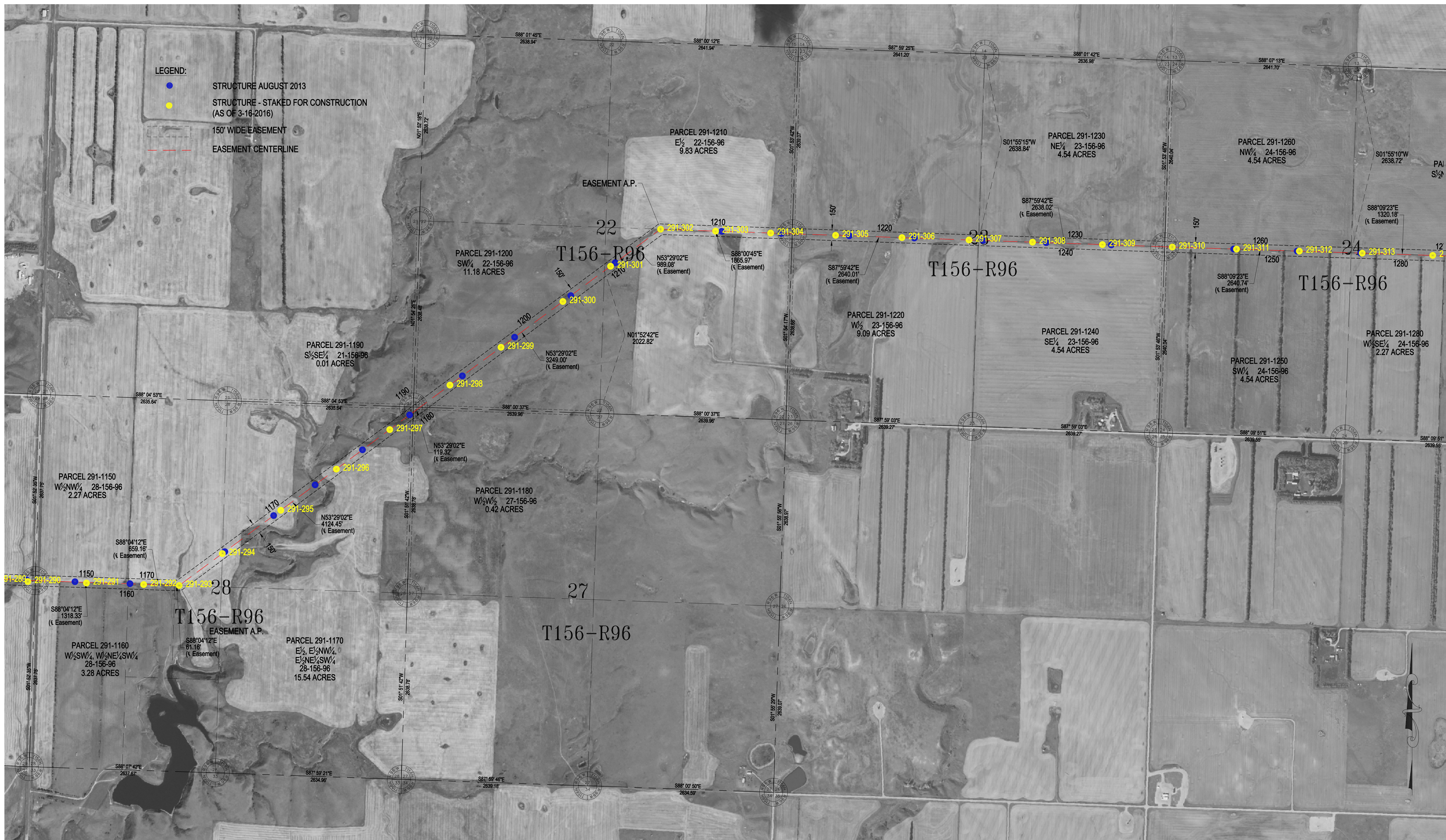
**LEGEND:**  
 ● STRUCTURE AUGUST 2013  
 ● STRUCTURE - STAKED FOR CONSTRUCTION (AS OF 3-16-2016)  
 --- 150' WIDE EASEMENT  
 --- EASEMENT CENTERLINE

Basis of Bearing is NAD83 ND State Plane North Zone - International Feet. All distances are Ground Distance. Combined scale factor = 0.999840332

SEC. 25 - T156N - R97W  
 SEC. 28,29 & 30 - T156N - R96W  
 WILLIAMS COUNTY, NORTH DAKOTA

**NOTE:**  
 STRUCTURE PLACEMENT AS OF 3-16-2016

PSC SUBMITTAL FOR LINE 291  
 CASE #PU-11-696  
 345KV TRANSMISSION LINE  
**BASIN ELECTRIC POWER COOPERATIVE**  
 A Touchstone Energy Cooperative



Basis of Bearing is NAD83 ND State Plane North Zone - International Feet. All distances are Ground Distance. Combined scale factor = 0.999840332

SEC. 22,23,24,27 & 28-T156N - R96W  
WILLIAMS COUNTY, NORTH DAKOTA

**NOTE:**  
STRUCTURE PLACEMENT AS OF 3-16-2016

PSC SUBMITTAL FOR LINE 291  
CASE #PU-11-696  
345kV TRANSMISSION LINE





**LEGEND:**

- STRUCTURE AUGUST 2013
- STRUCTURE - STAKED FOR CONSTRUCTION (AS OF 3-16-2016)
- 150' WIDE EASEMENT
- EASEMENT CENTERLINE

Basis of Bearing is NAD83 ND State Plane North Zone - International Feet. All distances are Ground Distance. Combined scale factor = 0.999840332

SEC. 19,20 & 21-T156N - R95W  
 SEC. 24-T156N - R96W  
 WILLIAMS COUNTY, NORTH DAKOTA

**NOTE:**  
 STRUCTURE PLACEMENT AS OF 3-16-2016

PSC SUBMITTAL FOR LINE 291  
 CASE #PU-11-696  
 345kV TRANSMISSION LINE  
**BASIN ELECTRIC POWER COOPERATIVE**  
 A Touchstone Energy Cooperative



**LEGEND:**

- STRUCTURE AUGUST 2013
- STRUCTURE - STAKED FOR CONSTRUCTION (AS OF 3-16-2016)
- 150' WIDE EASEMENT
- EASEMENT CENTERLINE

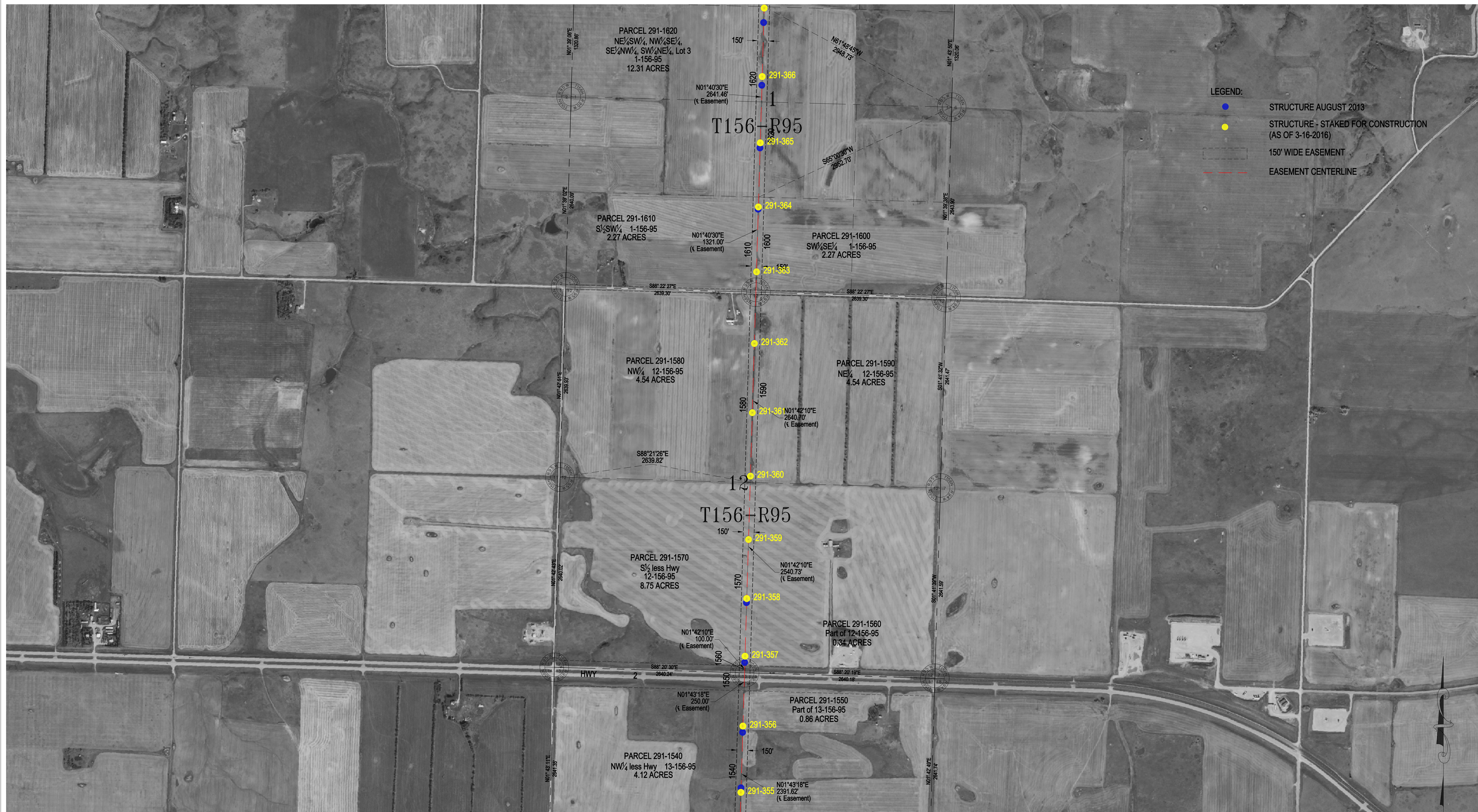
Basis of Bearing is NAD83 ND State Plane North Zone - International Feet. All distances are Ground Distance. Combined scale factor = 0.999840332

SEC. 13,21,22,23 & 24-T156N - R95W  
WILLIAMS COUNTY, NORTH DAKOTA

**NOTE:**  
STRUCTURE PLACEMENT AS OF 3-16-2016

PSC SUBMITTAL FOR LINE 291  
CASE #PU-11-696  
345kV TRANSMISSION LINE





**LEGEND:**

- STRUCTURE AUGUST 2013
- STRUCTURE - STAKED FOR CONSTRUCTION (AS OF 3-16-2016)
- 150' WIDE EASEMENT
- EASEMENT CENTERLINE

Basis of Bearing is NAD83 ND State Plane North Zone - International Feet. All distances are Ground Distance. Combined scale factor = 0.999840332

SEC. 1 & 12 - T156N - R95W  
WILLIAMS COUNTY, NORTH DAKOTA

**NOTE:**  
STRUCTURE PLACEMENT AS OF 3-16-2016

PSC SUBMITTAL FOR LINE 291  
CASE #PU-11-696  
345kV TRANSMISSION LINE  
**BASIN ELECTRIC POWER COOPERATIVE**  
A Touchstone Energy Cooperative



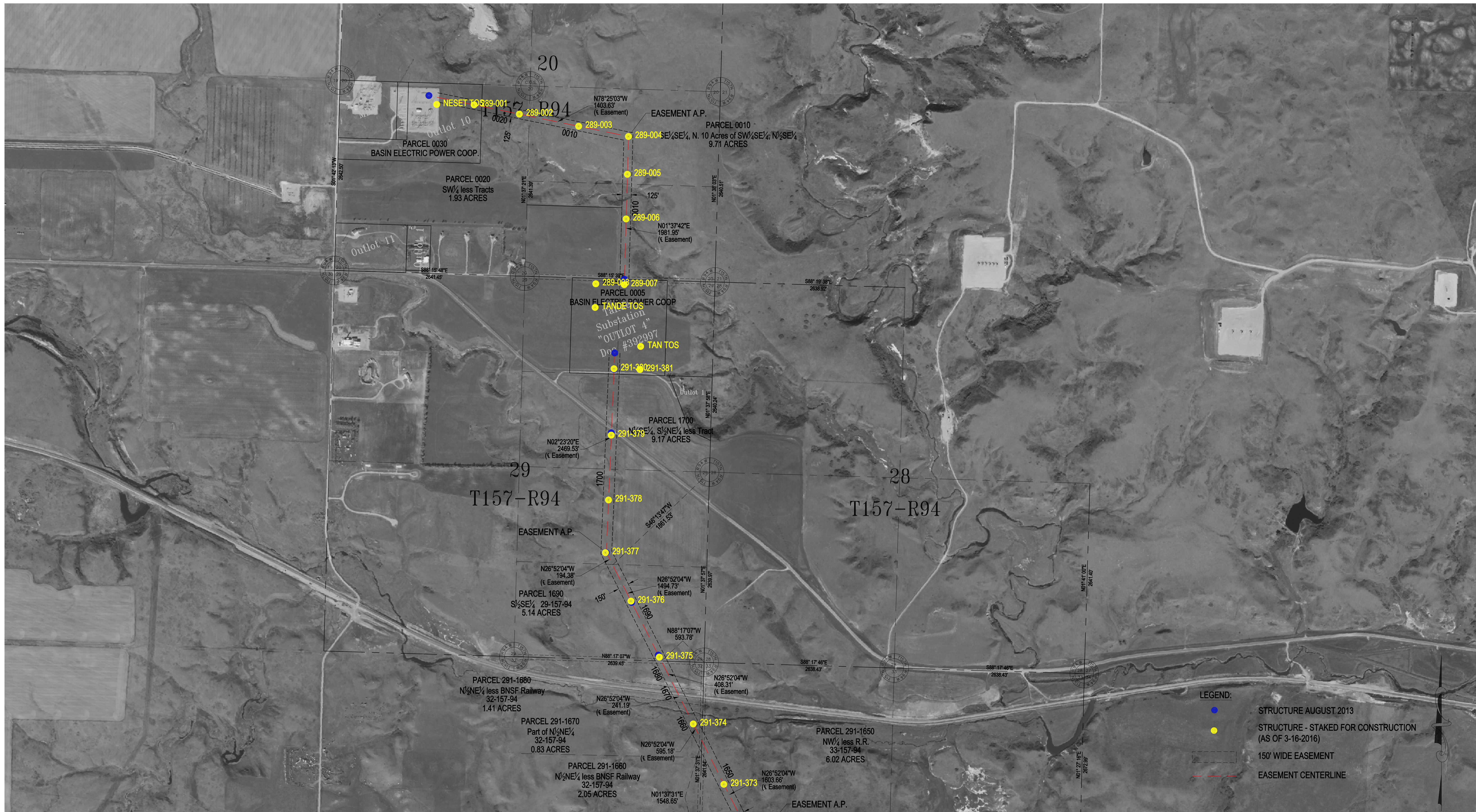
- LEGEND:**
- STRUCTURE AUGUST 2013
  - STRUCTURE - STAKED FOR CONSTRUCTION (AS OF 3-16-2016)
  - 150' WIDE EASEMENT
  - EASEMENT CENTERLINE

Basis of Bearing is NAD83 ND State Plane North Zone - International Feet. All distances are Ground Distance. Combined scale factor = 0.999840332

SEC. 1 - T156N - R95W  
 WILLIAMS COUNTY, NORTH DAKOTA  
 SEC. 32 & 33 - T157N - R94W  
 MOUNTRAIL COUNTY, NORTH DAKOTA

**NOTE:**  
 STRUCTURE PLACEMENT AS OF 3-16-2016

PSC SUBMITTAL FOR LINE 291  
 CASE #PU-11-696  
 345kV TRANSMISSION LINE  
**BASIN ELECTRIC POWER COOPERATIVE**  
 A Touchstone Energy Cooperative



Basis of Bearing is NAD83 ND State Plane North Zone - International Feet. All distances are Ground Distance. Combined scale factor = 0.999840332

SEC. 20,28,29 & 32 – T157N – R94W  
MOUNTRAIL COUNTY, NORTH DAKOTA

NOTE:  
STRUCTURE PLACEMENT AS OF 3-16-2016

PSC SUBMITTAL FOR LINE 291 & 289  
CASE #PU-11-696  
230kV & 345kV TRANSMISSION LINE

