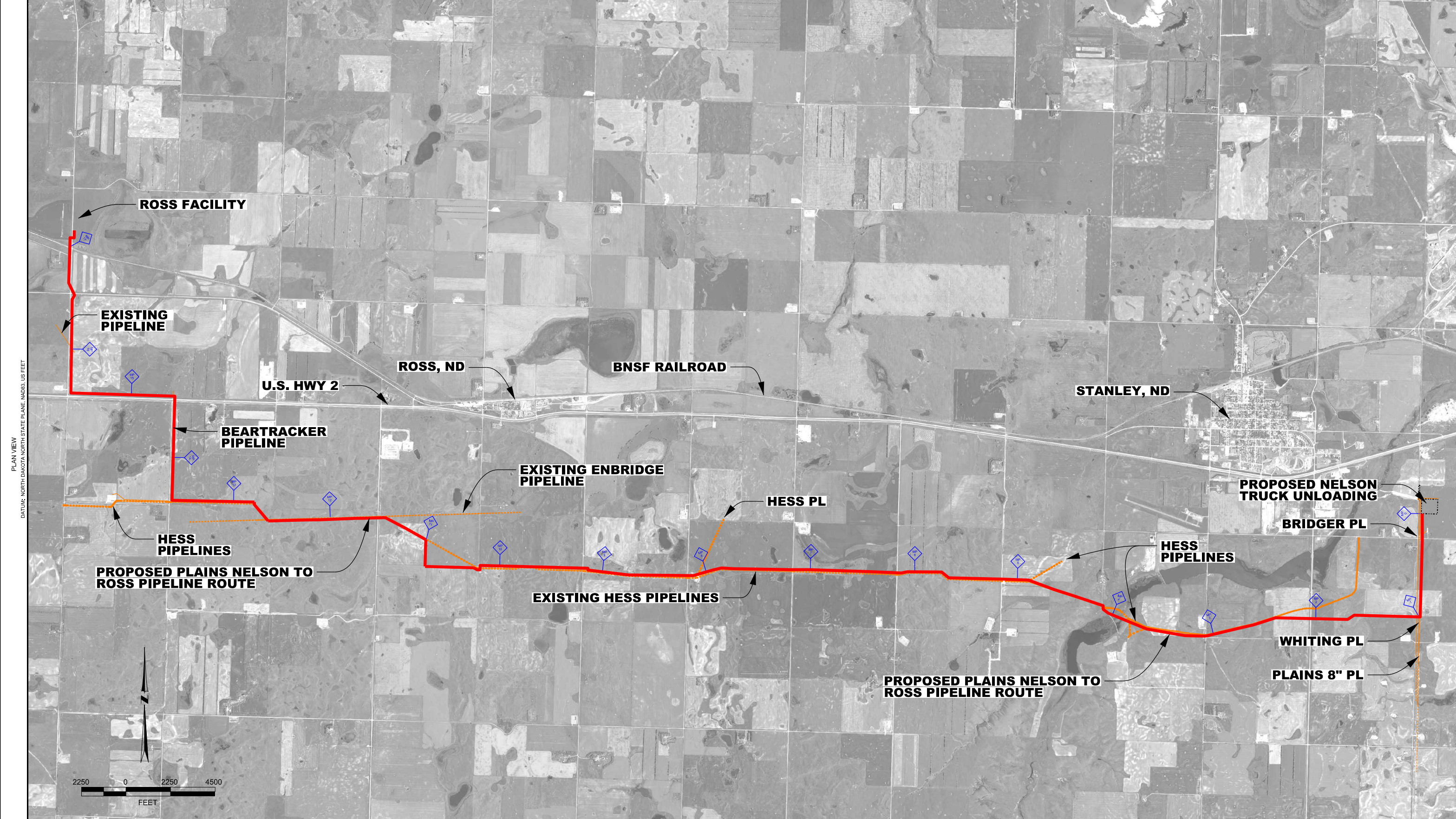
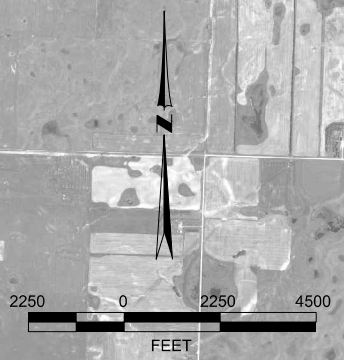


Appendix A

Engineering Documents



PLAN VIEW
 DATUM: NORTH DAKOTA NORTH STATE PLANE, NAD83, US FEET



NOTES	
LEGEND	
PROPOSED ROUTE	
EXISTING PIPELINES	
PARCEL LINES	
SECTION LINES	
TOWNSHIP/RANGE LINES	
SURFACE DRAINAGE	
WATER BODY	

PIPE SUMMARY							
FROM	TO	LIN. FT.	TYPE	FROM	TO	LIN. FT.	TYPE

PIPE SPECIFICATIONS		
FROM	TO	DESCRIPTION

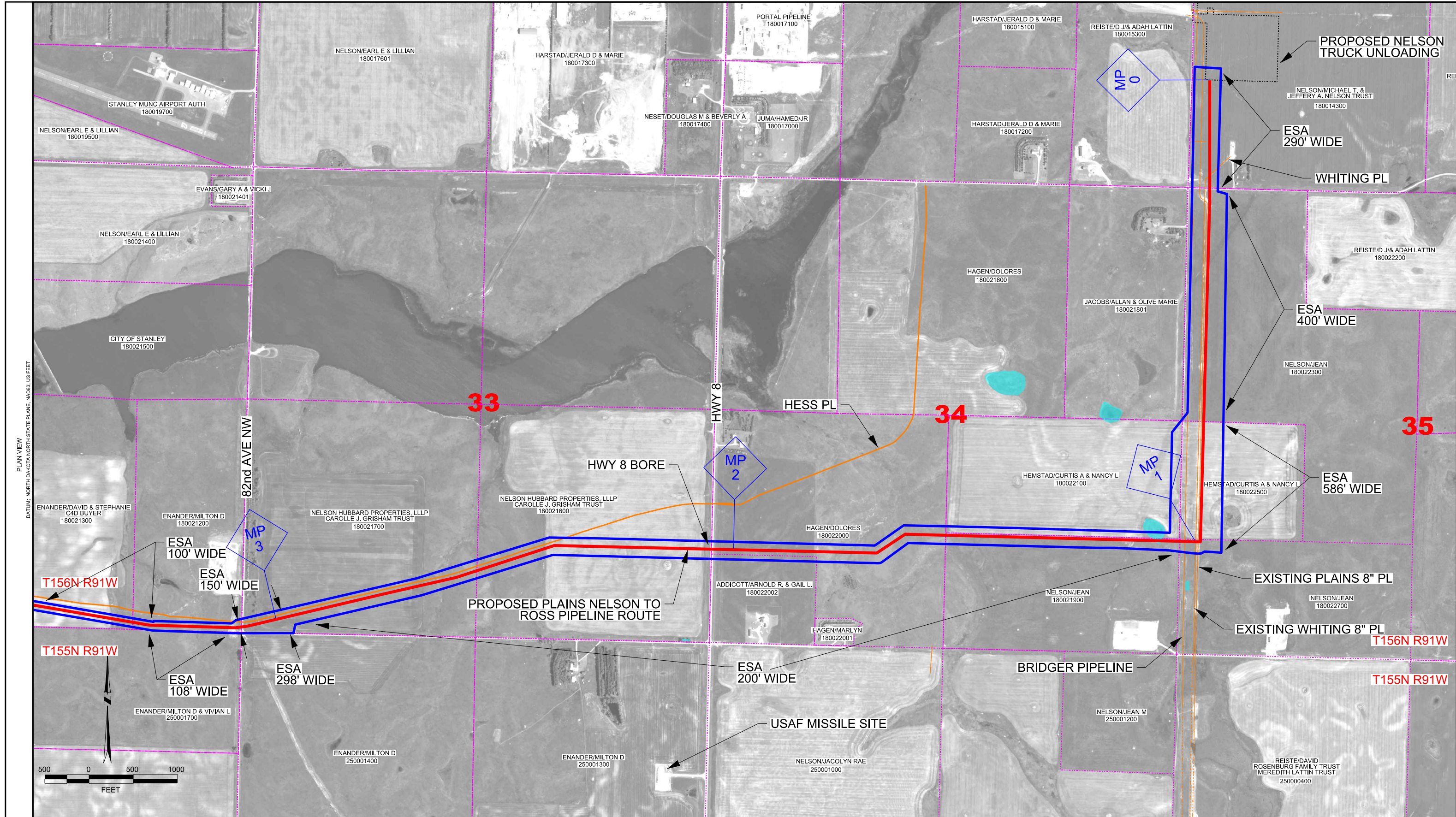
SPECIFICATIONS		REVISIONS				
WELDS:	X-RAYS:	REV. NO.	DESCRIPTION	DWN	CHKD	DATE
		A	ISSUED FOR REVIEW	JW	QB	10-5-11
TEST PRESSURE:		B	UPDATED FOREIGN PIPELINES FROM SURVEY	JW	QB	10-13-11
M.O.P.:		C	UPDATED WITH NEW PRIMARY PL ROUTE	JW	QB	11-23-11
CONST. START DATE:		D	UPDATED PRIMARY PL ROUTE	JW	QB	12-9-11
CONST. END DATE:		E	UPDATED ROSS FACILITY LABEL	JW	QB	1-9-12
FIELD BOOK	PAGES	F	UPDATED PRIMARY/SECONDARY ROUTES	JW	QB	3-15-12
		G	ISSUED FOR ND PSC APPLICATION	JW	QB	4-5-12

PLAINS
ALL AMERICAN
PIPELINE, L.P.

**NELSON TO ROSS PIPELINE
OVERVIEW MAP**
MOUNTRAIL COUNTY, NORTH DAKOTA

SCALE: AS SHWN	DATE: 8-9-11	PROJECT NO. 02826	DRAWING NO. 2826-M-0000B
DWN BY: JW	8-9-11		
CHKD BY: QB	8-9-11		
ENGR:			REVISION: G

PREPARED BY: POLSONY ENGINEERING, INC. PL-CIT/ED: 8/2012



PLAN VIEW
DATUM: NORTH DAKOTA NORTH STATE PLANE, NAD83, US FEET

NOTES

LEGEND

- PROPOSED ROUTE
- EXISTING PIPELINES
- PARCEL LINES
- SECTION LINES
- TOWNSHIP/RANGE LINES
- ENVIRONMENTAL SURVEY AREA
- WATER BODY/WETLAND

NOTES:

- 1) ESA-ENVIRONMENTAL SURVEY AREA
- 2) DIMENSIONS ARE APPROXIMATE AND FOR USE IN PSC APPLICATIONS ONLY

PIPE SUMMARY				PIPE SPECIFICATIONS			
FROM	TO	LIN. FT.	TYPE	FROM	TO	LIN. FT.	TYPE

SPECIFICATIONS		REVISIONS	
WELDS:	X-RAYS:	REV. NO.	DESCRIPTION
		A	ISSUED FOR REVIEW
		B	UPDATED LAND OWNERS & ROUTE, MISSILE SITE
		C	UPDATED PIPELINE ROUTE FROM SURVEY
		D	UPDATED FOREIGN PIPELINES FROM SURVEY
		E	ADDED SECTION NUMBERS
		F	UPDATED PRIMARY ROUTE
		G	ADDED WETLANDS, UPDATED PRIMARY ROUTE
		H	ADDED ESA BOUNDARY

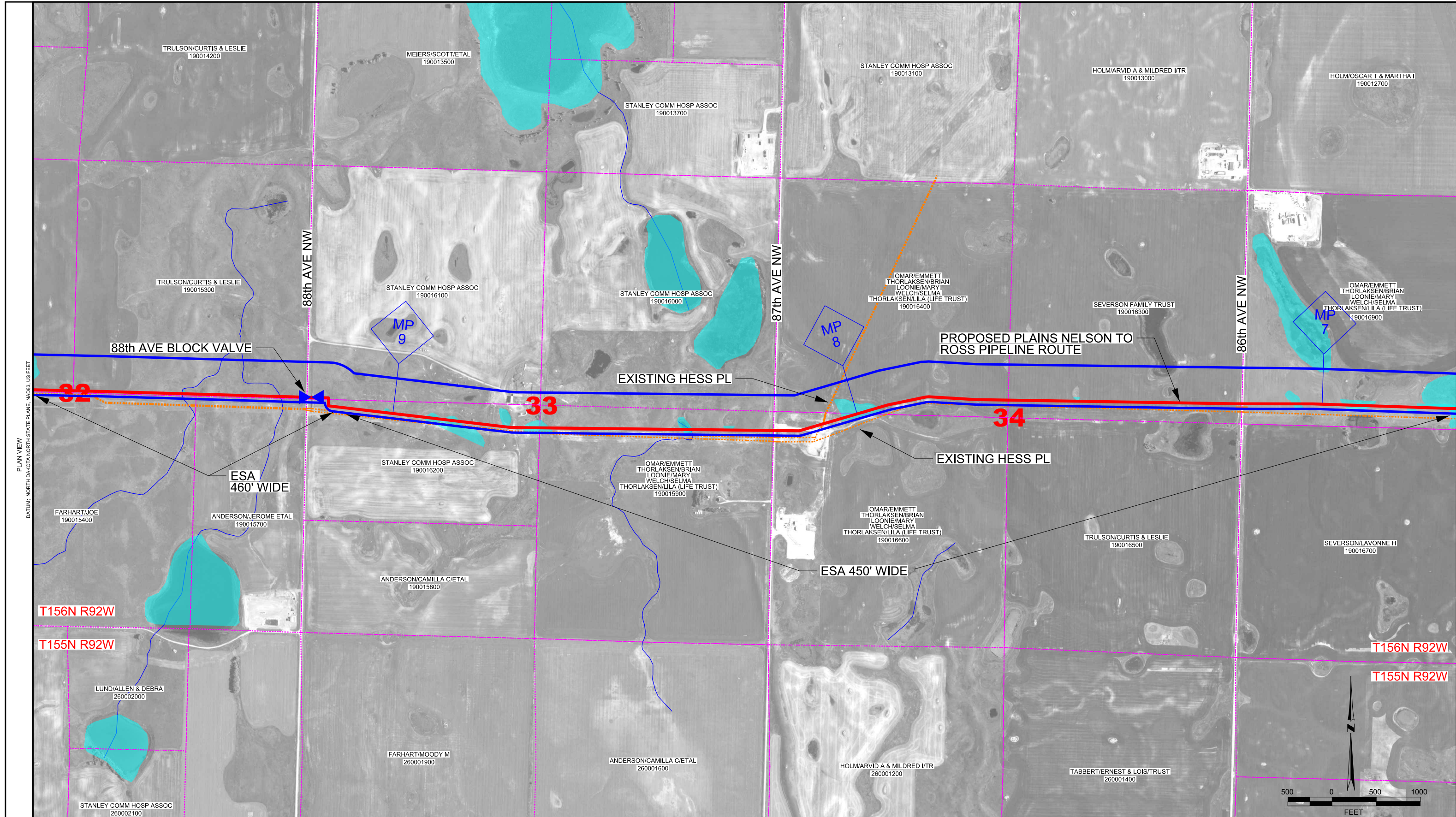
FIELD BOOK	PAGES	SCALE:	AS SHWN	DATE	PROJECT NO.	DRAWING NO.
		DWN BY:	JW	8-9-11	02826	2826-M-0001
		CHKD BY:	QB	8-9-11		
		ENGR:				

PLAINS ALL AMERICAN PIPELINE, L.P.

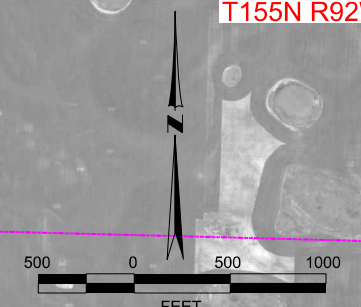
NELSON TO ROSS PIPELINE PROPOSED ROUTE OVERVIEW #1
MOUNTAIN COUNTY, NORTH DAKOTA

SCALE: AS SHWN DATE PROJECT NO. DRAWING NO.
DWN BY: JW 8-9-11 02826 2826-M-0001
CHKD BY: QB 8-9-11
ENGR: REVISION: H

PREPARED BY: PLAINS ENGINEERING, INC. PL/CTED: 8/21/11



PLAN VIEW
 DATUM: NORTH DAKOTA NORTH STATE PLANE, NAD83, US FEET



NOTES

LEGEND

- PROPOSED ROUTE ———
- EXISTING PIPELINES ———
- PARCEL LINES - - - - -
- SECTION LINES - - - - -
- TOWNSHIP/RANGE LINES ———
- ENVIRONMENTAL SURVEY AREA ———
- WATER BODY/WETLAND ———

NOTES:

- 1) ESA-ENVIRONMENTAL SURVEY AREA
- 2) DIMENSIONS ARE APPROXIMATE AND FOR USE IN PSC APPLICATIONS ONLY

PIPE SUMMARY			
FROM	TO	LIN. FT.	TYPE

PIPE SPECIFICATIONS			
FROM	TO	LIN. FT.	TYPE

SPECIFICATIONS		REVISIONS				
WELDS:	X-RAYS:	REV. NO.	DESCRIPTION	DWN	CHKD	DATE
		A	ISSUED FOR REVIEW	JW	QB	8-9-11
TEST PRESSURE:		B	UPDATED PL ROUTE, LAND OWNERS, & BLK VALVE	JW	QB	8-30-11
M.O.P.:		C	UPDATED PIPELINE ROUTE FROM SURVEY	JW	QB	10-3-11
CONST. START DATE:		D	UPDATED FOREIGN PIPELINES FROM SURVEY	JW	QB	10-13-11
CONST. END DATE:		E	ADDED SECTION NUMBERS	JW	QB	10-18-11
FIELD BOOK:	PAGES:	F	UPDATED MILEPOSTS	JW	QB	12-9-11
		G	ADDED WETLANDS	JW	QB	3-15-12
		H	ADDED ESA BOUNDARY	JW	QB	4-3-12

PLAINS ALL AMERICAN PIPELINE, L.P.

NELSON TO ROSS PIPELINE PROPOSED ROUTE OVERVIEW #3 MOUNTRAIL COUNTY, NORTH DAKOTA

SCALE: AS SHWN	DATE: 8-9-11	PROJECT NO. 02826	DRAWING NO. 2826-M-0003
DWN BY: JW	CHKD BY: QB	ENGR:	REVISION:

PREPARED BY: PLAINS ENGINEERING, INC. PL/CT/ED: 8/21/11

