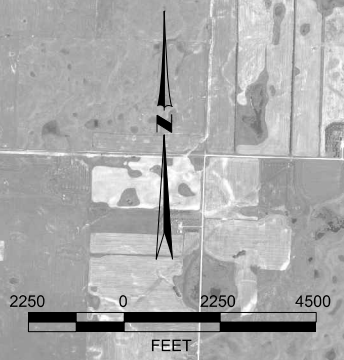


PLAN VIEW
DATUM: NORTH DAKOTA NORTH STATE PLANE, NAD83, US FEET



NOTES	
LEGEND	
PROPOSED ROUTE	
EXISTING PIPELINES	
PARCEL LINES	
SECTION LINES	
TOWNSHIP/RANGE LINES	
SURFACE DRAINAGE	
WATER BODY	

PIPE SUMMARY							
FROM	TO	LIN. FT.	TYPE	FROM	TO	LIN. FT.	TYPE

PIPE SPECIFICATIONS		
FROM	TO	DESCRIPTION

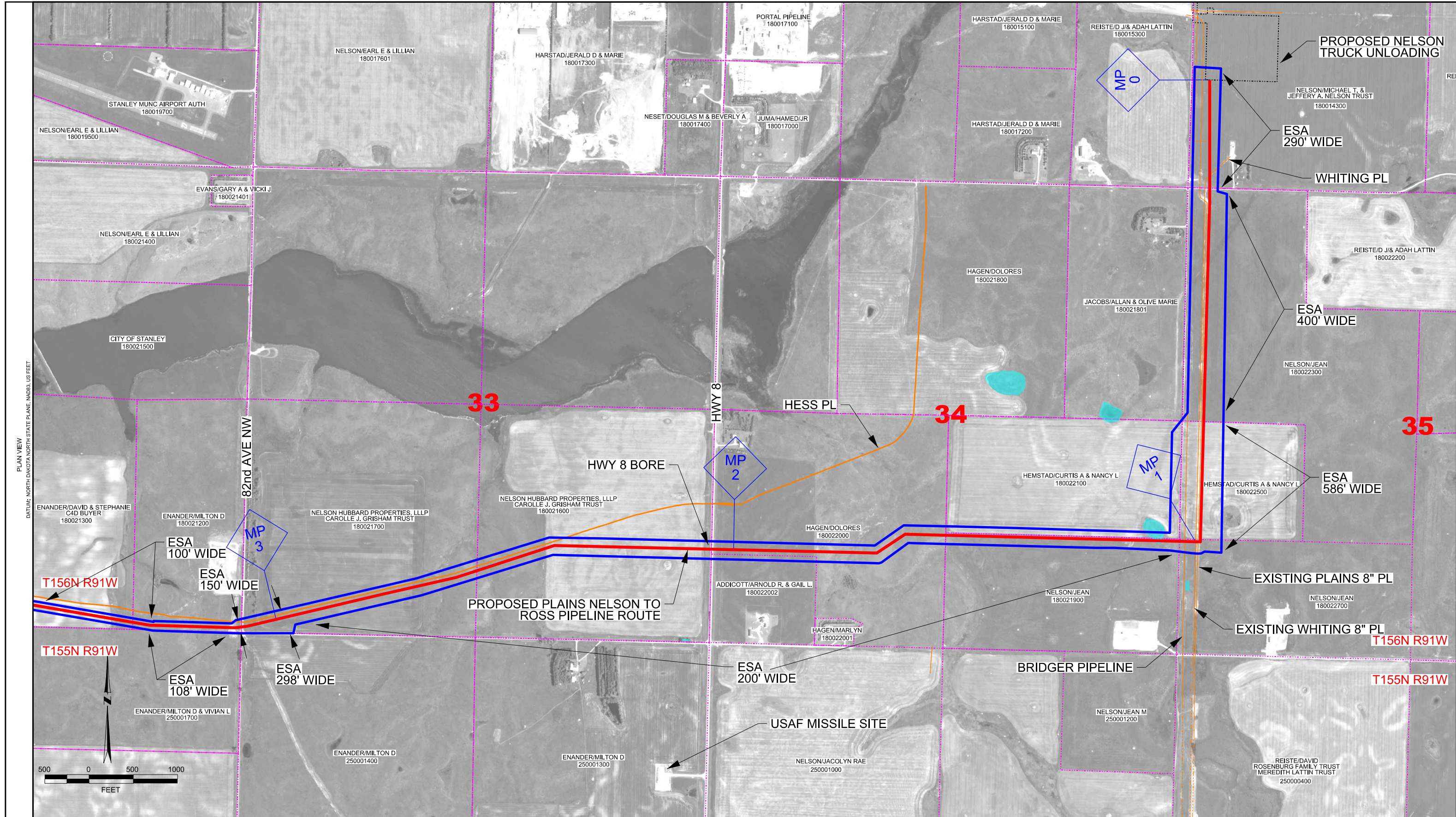
SPECIFICATIONS		REVISIONS				
WELDS:	X-RAYS:	REV. NO.	DESCRIPTION	DWN	CHKD	DATE
		A	ISSUED FOR REVIEW	JW	QB	10-5-11
TEST PRESSURE:		B	UPDATED FOREIGN PIPELINES FROM SURVEY	JW	QB	10-13-11
M.O.P.:		C	UPDATED WITH NEW PRIMARY PL ROUTE	JW	QB	11-23-11
CONST. START DATE:		D	UPDATED PRIMARY PL ROUTE	JW	QB	12-9-11
CONST. END DATE:		E	UPDATED ROSS FACILITY LABEL	JW	QB	1-9-12
		F	UPDATED PRIMARY/SECONDARY ROUTES	JW	QB	3-15-12
		G	ISSUED FOR ND PSC APPLICATION	JW	QB	4-5-12

PLAINS
ALL AMERICAN
PIPELINE, L.P.

**NELSON TO ROSS PIPELINE
OVERVIEW MAP**
MOUNTRAIL COUNTY, NORTH DAKOTA

SCALE: AS SHWN	DATE: 8-9-11	PROJECT NO. 02826	DRAWING NO. 2826-M-0000B
DWN BY: JW	8-9-11		
CHKD BY: QB	8-9-11		
ENGR:			REVISION: G

PREPARED BY: POLSONY ENGINEERING, INC. PL-CIT/ED: 8/2012



PLAN VIEW
DATUM: NORTH DAKOTA NORTH STATE PLANE, NAD83, US FEET

NOTES

LEGEND

- PROPOSED ROUTE
- EXISTING PIPELINES
- PARCEL LINES
- SECTION LINES
- TOWNSHIP/RANGE LINES
- ENVIRONMENTAL SURVEY AREA
- WATER BODY/WETLAND

NOTES:

- 1) ESA-ENVIRONMENTAL SURVEY AREA
- 2) DIMENSIONS ARE APPROXIMATE AND FOR USE IN PSC APPLICATIONS ONLY

PIPE SUMMARY				PIPE SPECIFICATIONS			
FROM	TO	LIN. FT.	TYPE	FROM	TO	LIN. FT.	TYPE

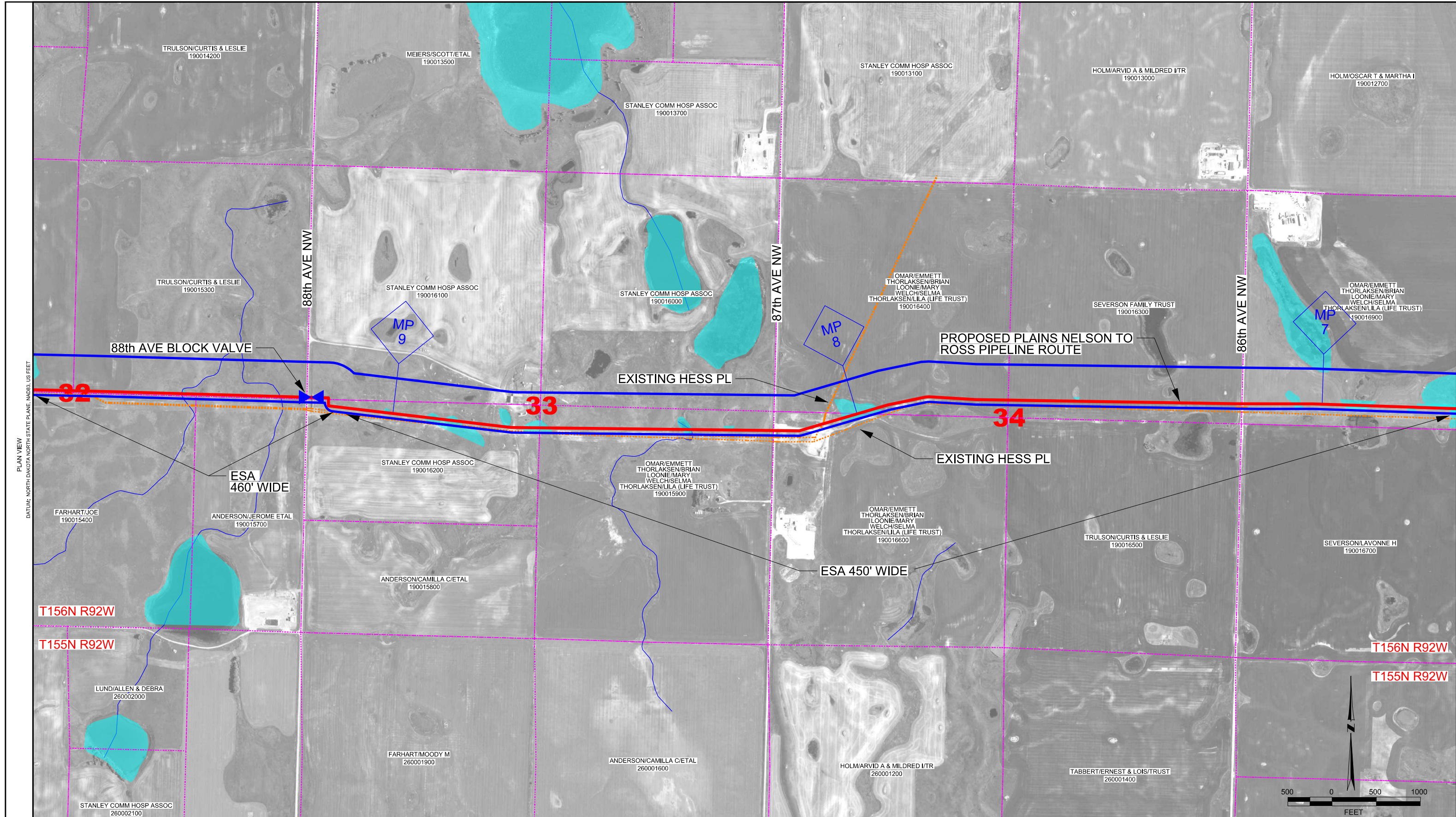
SPECIFICATIONS		REVISIONS	
WELDS:	X-RAYS:	REV. NO.	DESCRIPTION
		A	ISSUED FOR REVIEW
		B	UPDATED LAND OWNERS & ROUTE, MISSILE SITE
		C	UPDATED PIPELINE ROUTE FROM SURVEY
		D	UPDATED FOREIGN PIPELINES FROM SURVEY
		E	ADDED SECTION NUMBERS
		F	UPDATED PRIMARY ROUTE
		G	ADDED WETLANDS, UPDATED PRIMARY ROUTE
		H	ADDED ESA BOUNDARY

FIELD BOOK	PAGES	SCALE:	AS SHWN	DATE	PROJECT NO.	DRAWING NO.

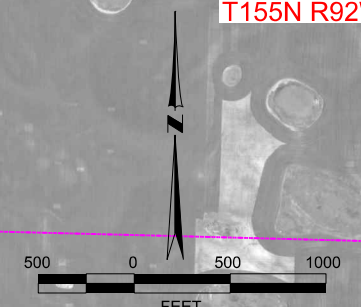
PLAINS ALL AMERICAN PIPELINE, L.P.

NELSON TO ROSS PIPELINE PROPOSED ROUTE OVERVIEW #1
MOUNTAIN COUNTY, NORTH DAKOTA

SCALE: AS SHWN DATE PROJECT NO. DRAWING NO.
DWN BY: JW 8-9-11 02826 2826-M-0001
CHKD BY: QB 8-9-11 REVISION: H
ENGR:



PLAN VIEW
 DATUM: NORTH DAKOTA NORTH STATE PLANE, NAD83, US FEET



NOTES	
LEGEND	
PROPOSED ROUTE	
EXISTING PIPELINES	
PARCEL LINES	
SECTION LINES	
TOWNSHIP/RANGE LINES	
ENVIRONMENTAL SURVEY AREA	
WATER BODY/WETLAND	
NOTES:	
1) ESA-ENVIRONMENTAL SURVEY AREA	
2) DIMENSIONS ARE APPROXIMATE AND FOR USE IN PSC APPLICATIONS ONLY	

PIPE SUMMARY							
FROM	TO	LIN. FT.	TYPE	FROM	TO	LIN. FT.	TYPE

PIPE SPECIFICATIONS	
DESCRIPTION	LIN. FT.

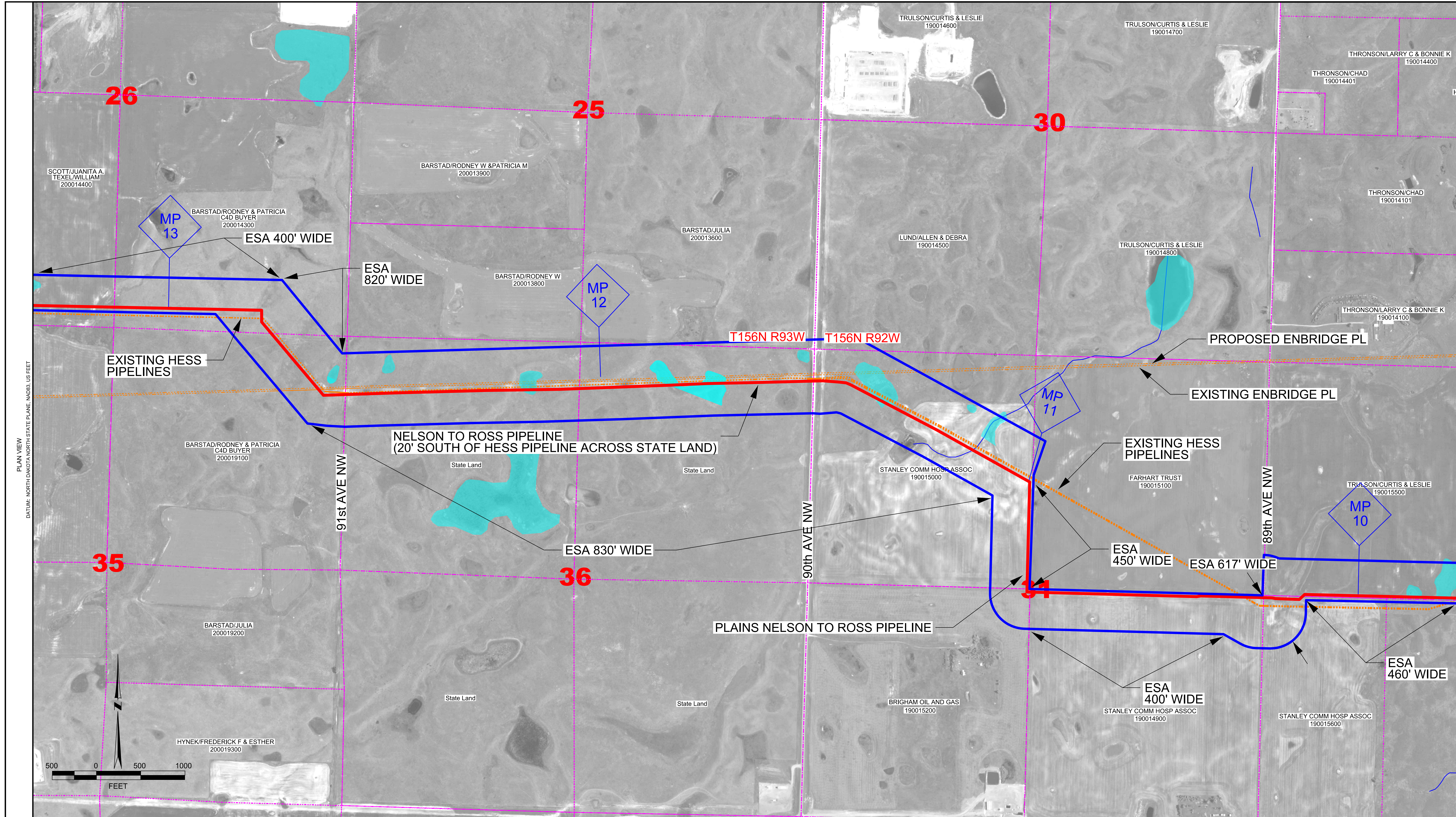
SPECIFICATIONS		REVISIONS				
WELDS:	X-RAYS:	REV. NO.	DESCRIPTION	DWN	CHKD	DATE
TEST PRESSURE:		A	ISSUED FOR REVIEW	JW	QB	8-9-11
M.O.P.:		B	UPDATED PL ROUTE, LAND OWNERS, & BLK VALVE	JW	QB	8-30-11
CONST. START DATE:		C	UPDATED PIPELINE ROUTE FROM SURVEY	JW	QB	10-3-11
CONST. END DATE:		D	UPDATED FOREIGN PIPELINES FROM SURVEY	JW	QB	10-13-11
FIELD BOOK	PAGES	E	ADDED SECTION NUMBERS	JW	QB	10-18-11
		F	UPDATED MILEPOSTS	JW	QB	12-9-11
		G	ADDED WETLANDS	JW	QB	3-15-12
		H	ADDED ESA BOUNDARY	JW	QB	4-3-12

PLAINS ALL AMERICAN PIPELINE, L.P.

NELSON TO ROSS PIPELINE PROPOSED ROUTE OVERVIEW #3 MOUNTRAIL COUNTY, NORTH DAKOTA

SCALE: AS SHWN	DATE: 8-9-11	PROJECT NO. 02826	DRAWING NO. 2826-M-0003
DWN BY: JW	CHKD BY: QB	ENGR:	REVISION: H

PREPARED BY: PLAINS ENGINEERING, INC. PL/CT/ED: 8/21/11



NOTES

1) ESA-ENVIRONMENTAL SURVEY AREA
2) DIMENSIONS ARE APPROXIMATE AND FOR USE IN PSC APPLICATIONS ONLY

PIPE SUMMARY				PIPE SPECIFICATIONS			
FROM	TO	LIN. FT.	TYPE	FROM	TO	LIN. FT.	TYPE

SPECIFICATIONS		REVISIONS				
WELDS:	X-RAYS:	REV. NO.	DESCRIPTION	DWN	CHKD	DATE
TEST PRESSURE:		0	ISSUED FOR CONSTRUCTION	JW	QB	4-18-12
M.O.P.:		1	REROUTE ACROSS WELLPAD	JW	QB	7-26-12
CONST. START DATE:						
CONST. END DATE:						
FIELD BOOK	PAGES					

PLAINS ALL AMERICAN PIPELINE, L.P.

NELSON TO ROSS PIPELINE PROPOSED ROUTE OVERVIEW #4
MOUNTAIN COUNTY, NORTH DAKOTA

SCALE:	AS SHWN	DATE:	PROJECT NO.	DRAWING NO.
DWN BY:	JW	8-9-11	02826	2826-M-0004
CHKD BY:	QB	8-9-11		
ENGR:				REVISION: 1

PREPARED BY: RODNEY ENGINEERING, INC. PLOTTED: 8/21/12

