



PLAINS
ALL AMERICAN
PIPELINE, L.P.

Weekly Construction Progress Report

Case # **PU-12-40**

Project: Nelson to Ross

Week Ending: 11/4/2012

Report # 19

Title	Name	Company	Office Phone	Cell Phone
Project Manager	Jim Fleetwood	Plains Pipeline	307-472-9911	
Project Coordinator	Herbert Holder	QCS	303-748-3082	
Contractor Spread	Ron Marsh	Pro-Pipe	406-239-0996	
Office Manager	Jason Setser	QCS	918-399-2420	

Brief Description of Week's Activities

Continuing to monitor Silt fence ECD structures. We are starting to deal w/Snow/Icy conditions we have 4- R/bores & 2- HDD's left. We have Tie-ins, placement of the Valve setting's & Fabrication. Setting the launchers & receivers. Working on padding, backfilling as well rough grade clean-up. Setting water bars, seeding, mulching, fence replacement, while working thru final clean-up.

Project Completion Spread

Description	Week Complete	% Week Complete	Total Complete	% Total Complete
Clear & Grade lft.	n/a	n/a	90,466ft	100.00%
ROW Finished lft.	n/a	n/a	n/a	n/a
Stringing B/P	n/a	n/a	90,466ft	100.00%
Tie-Ins/Valve Fab	61ea welds	1,851ea x-rayed	1,844ea welds	n/a
Ditching	3,110ft	n/a	71,000ft	78.00%
Lowering In	3,921ft	n/a	70,591ft	78.00%
Backfill	4,604ft	n/a	69,904ft	77.00%
Clean-up	n/a	n/a	21,627ft	23.00%
Coating (Welds)ft.	Tie/In area's	n/a	90,466ft	left is Tie/Ins
ECDs Installed	n/a	n/a	n/a	n/a
Silt Fence lft.	n/a	n/a	28,195ft	n/a
Hay bales ea.	16ea	n/a	851ea	n/a
Mats ea.	n/a	n/a	719ea	n/a
Waddles ea.	n/a	n/a	309ea	n/a

Project construction / reclamation activities

Description	Week Complete	% Week Complete	Total Complete	% Total Complete
Roadway/Bores/HDD	2ea/655ft	Bore/HDD/6 Left	46ea	HDD+Bores=13,676ft
Erosion / Sediment	n/a	n/a	n/a	n/a
Topsoil	n/a	n/a	n/a	n/a
Restoration/Cleanup	n/a	n/a	Rough/In 54,935ft	57.00%
Roadway Restoration	n/a	n/a	n/a	n/a
Fence / Gate	n/a	n/a	4ea	n/a
Fertilizing / Seeding	n/a	n/a	n/a	n/a

Project Site Safety

On Staff personal, we are acting as Safety, working together & good communication to head off any safety concerns

Signature:

Date:

11/4/12

88 **PU-12-40** Filed: 11/6/2012 Pages: 7
Plains Pipeline Nelson to Ross Pipeline progress
report - week ending 11-4-2012

Plains Pipeline, L.P.



PLAINS
ALL AMERICAN
PIPELINE, L.P.

Weekly Construction Progress Report

Case # PU-12-40

Report # 19

Project: Nelson to Ross

Week Ending: 11/4/2012

Dates of construction	Startup	Shutdown
	6/15/2012	

Temperature high and low for week.	High	Low
	26	10

Landowner / Public Concerns	Addressing Individual	Phone
n/a		

Suspension of project activities (when, where, why ,how long)
 Rain delays thru the week, only fabrication worked as well drilling contractor.

Identify Cultural Resources not previously identified.
 n/a

Critical Habitat or Threatened or Endangered Species.
 n/a

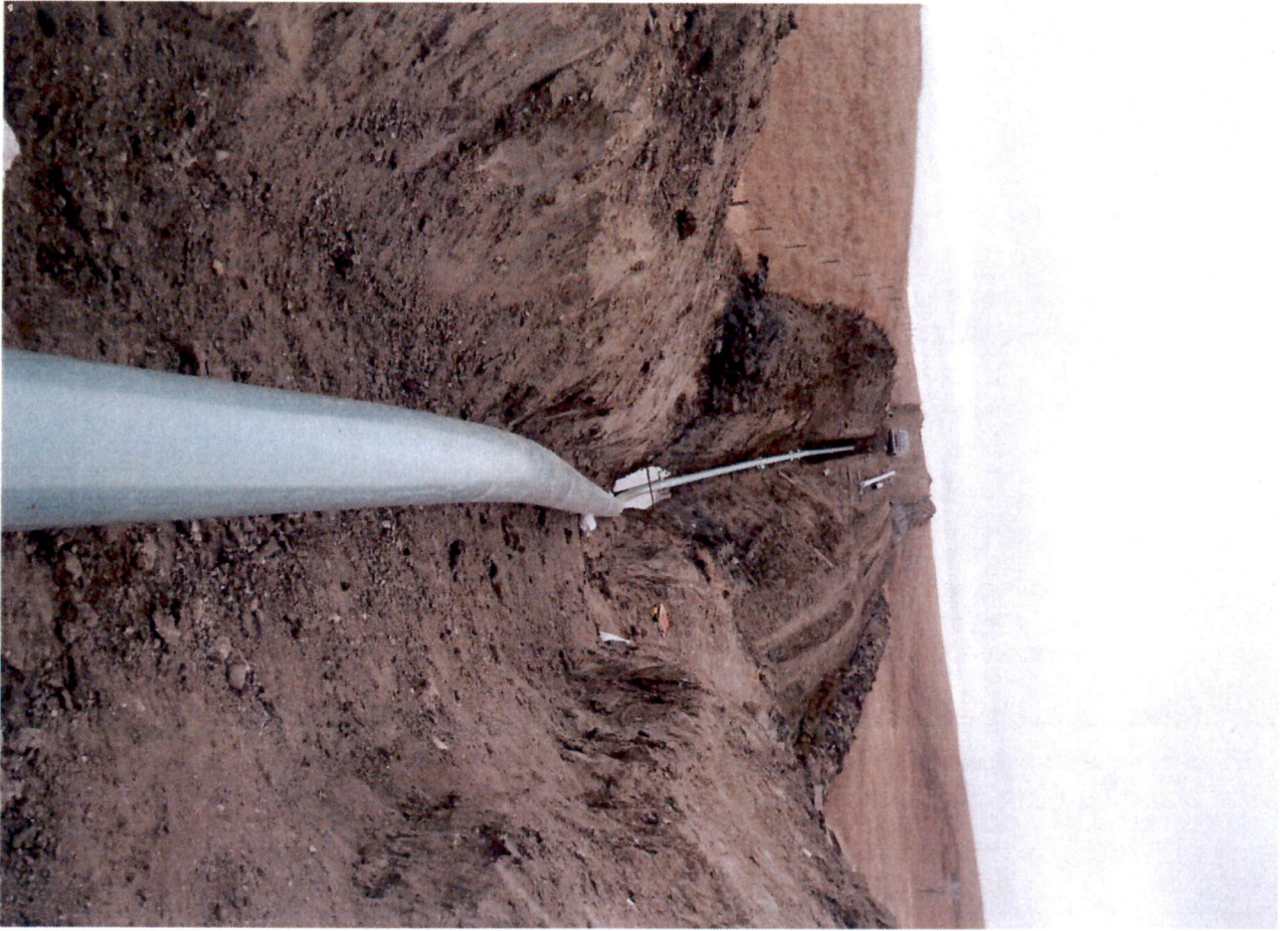
Cathodic Protection Installed

Special Coordination	Who	When
Chevron has approved for Plain's pipeline contractor to cold cut and place mechanical end caps on the hit line.		

We are working with Ryan Krapp on scheduling the 2nd PSC audit for sometime next week.



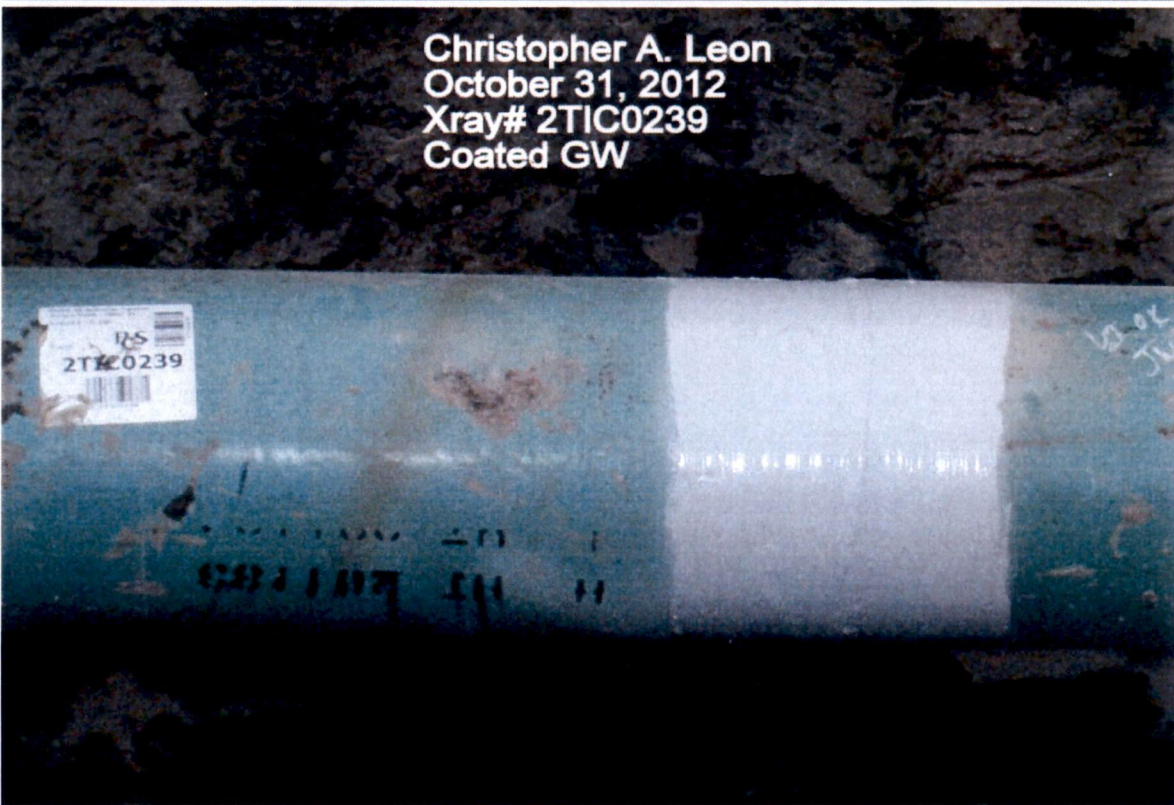




Christopher A. Leon
October 31, 2012
Xray# 2TIC0239
Coating GW



Christopher A. Leon
October 31, 2012
Xray# 2TIC0239
Coated GW



Christopher A. Leon
October 31, 2012
Xray# 2TIC0241
Sand blasted GW

