



Sarah Dalton
Project Manager –
Superfund & Specialty
Portfolio Business Unit

**Chevron Environmental
Management Company**
4800 Fournace Place, E534B
Bellaire, Texas 77401
Tel 713 432 2582
sdalton@chevron.com

December 19, 2012

RECEIVED

DEC 24 2012

PUBLIC SERVICE COMMISSION

Darrell Nitschke
Executive Secretary
North Dakota Public Service Commission
600 East Boulevard, Department 408
Bismarck, ND 58505-0480

RE: TDPI Asset – Stanley 6-inch Pipeline Repair – November 2012
Montrail County, North Dakota
Case No. PU-12-40

Dear Mr. Nitschke:

Transmitted with this letter is a copy of the field report summarizing the Texaco Downstream Properties Inc. (TDPI) Stanley 6-inch Pipeline repair activities that were completed in Montrail County, North Dakota on November 13, 2012. The pipeline was repaired in response to a third-party strike that was reported to the North Dakota Public Service Commission on August 1, 2012 and assigned Case Number PU-12-40.

If you have any questions regarding this transmittal or the attached field report, please contact me at the phone number or email provided in the letterhead. Thank you very much for your assistance with this matter.

Happy holidays,

Sarah Dalton
Project Manager

cc: Irvin Jim Fleetwood, Plains Pipeline, LP
Adriane Gifford, CRA

97 **PU-12-40** Filed: 12/24/2012 Pages: 7
Field report summary of pipeline repair activities



**CONESTOGA-ROVERS
& ASSOCIATES**

6320 Rothway, Suite 100, Houston, Texas 77040
Telephone: (713) 734-3090 Fax: (713) 734-3391
<http://www.craworld.com>

December 19, 2012

Reference No. 059788

Ms. Sarah Dalton
Chevron Environmental Management Company
4800 Fournace Place, E534B
Bellaire, TX 77401

Subject: TDPI Asset - Stanley 6-inch Pipeline Repair - November 2012
Montrail County, North Dakota

Dear Ms. Dalton:

Conestoga-Rovers & Associates (CRA) is pleased to submit this field report summary to Chevron Environmental Management Company (CEMC) to document the Texaco Downstream Properties Inc. (TDPI) Stanley 6-inch Pipeline repair activities that were completed within Montrail County, just southeast of Stanley, North Dakota in November 2012.

The pipeline is located through approximately 75% of crop land, 25% of pasture land, and intersects Stanley Lake. It is currently idled and out-of-service. Based on available historical records, the pipeline was purged with nitrogen and abandoned in 1992 or 1996. In November 2006, one 6-inch diameter 990-foot long section of the Stanley pipeline commencing at the Stanley Station, as well as a 4-inch diameter 50-foot section of pipeline from adjoining City of Stanley property were removed at the request of the property owner (Enbridge Energy). In November 2007, CRA and Bobcat Contracting completed four taps on the remaining length of the Stanley pipeline that confirmed the line to be empty, void of asbestos containing material (ACM) wrap, idled, and out-of-service. A section of the Stanley pipeline was repaired in January 2008 due to it being struck during Whiting Petroleum Corporation's construction activities that were being completed in the right-of-way. Additionally, in October 2008, a section of the Stanley pipeline was exposed, but not struck, during Hess Corporation's construction activities in the pipeline right-of-way.

STANLEY PIPELINE STRIKE NOTIFICATION

On August 1, 2012, a contractor excavating for the Nelson to Ross Pipeline project on behalf of Plains Pipeline, LP (Plains) encountered and contacted the Stanley Pipeline at the GPS coordinate location of 48° 17' 14.14153" N and 102° 21' 43.07792" W. There were no markers identifying the pipeline in the area, and it is not currently listed in the North Dakota One Call system. The Stanley pipeline was not penetrated, but the plastic corrosion protection wrap (non-ACM yellow jacket wrap) was torn and the pipe was gouged. As a precautionary

Equal
Employment Opportunity
Employer

REGISTERED COMPANY FOR
ISO 9001
ENGINEERING DESIGN



**CONESTOGA-ROVERS
& ASSOCIATES**

December 19, 2012

- 2 -

Reference No. 059788

measure, the Plains contractor installed a temporary clamp around the most damaged area of the pipe.

TDPI was notified of the strike on September 11, 2012 by Chris Marohl with the North Dakota Public Service Commission, the constitutional agency that maintains statutory authority over pipeline safety and other functions in North Dakota. It was determined that a more permanent solution to the damaged pipeline was required before it could be backfilled and the case considered closed. The temporary clamp that was installed by the Plains contractor is typically used on low pressure pipes and would likely contribute to pipeline corrosion in that particular location due to the exposed pipeline with damaged corrosion protection wrap.

STANLEY PIPELINE REPAIR

On October 31, 2012, CEMC, on behalf of TDPI, authorized Plains' contractor, Pro Pipe Corporation (Pro Pipe), to remove the damaged section of the pipeline and cap the two resultant pipeline ends using PLIDCO® mechanical caps provided by Bobcat Contracting, a subcontractor to CRA. On November 13, 2012, Pro Pipe cut and removed an approximate 4-foot section of pipe, including the section with the temporary clamp, and affixed the mechanical caps to the open ends of the pipeline. All of the work was conducted using cold techniques, including tapping and cutting of the pipeline. According to Pro Pipe, there were no fluids encountered in the pipeline, and there was only a small amount of pressure on the pipeline, roughly 5 pounds or less, during these activities. Once the caps were installed, the pipeline was reburied and the surface was graded to match the existing topography.

The repair work was done satisfactorily and incident-free by Pro Pipe. A figure showing the area of the pipeline repair and pre- and post-repair photographic documentation are provided as attachments.

If you should have any questions, please do not hesitate to contact us at 713-734-3090.

Yours truly,

CONESTOGA-ROVERS & ASSOCIATES



Adriane Gifford
Project Manager

Joe Cruseturner
Principal

Attachments: Figure, Photographs



Latitude: 48-17-14.14153
Longitude: -102-21-43.07792

- Legend**
-  Pipeline Repair Location
 -  Stanley 6" Pipeline Location

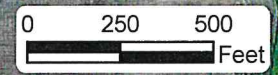


Figure 1
STANLEY 6" PIPELINE REPAIR
MOUNTRAIL COUNTY, NORTH DAKOTA
Chevron Environmental Management Company, Houston, Texas

Client: Chevron Environmental Management Co.	Supplier: Conestoga-Rovers & Associates
Project Name: TDPI Asset – Stanley 6" Pipeline	Site Location: Montrail County, North Dakota

Description: Stanley 6" Pipeline at GPS coordinate location of 48° 17' 14.14153" N and 102° 21' 43.07792" W

Photograph No. 3
Photographer: Pro Pipe Corporation
Date: 11/13/12
Comments: View of exposed pipeline with damaged plastic corrosion wrap removed.



Description: Stanley 6" Pipeline at GPS coordinate location of 48° 17' 14.14153" N and 102° 21' 43.07792" W

Photograph No. 4
Photographer: Pro Pipe Corporation
Date: 11/13/12
Comments: View of cutting activities with precautionary containment tub beneath pipeline to capture free liquids (none).



Client: Chevron Environmental Management Co.	Supplier: Conestoga-Rovers & Associates
Project Name: TDPI Asset – Stanley 6" Pipeline	Site Location: Montrail County, North Dakota

Description: Stanley 6" Pipeline at GPS coordinate location of 48° 17' 14.14153" N and 102° 21' 43.07792" W

Photograph No.
1

Photographer:
Plains Pipeline, LP - Contractor

Date:
8/1/12

Comments:
View of damaged plastic corrosion wrap.



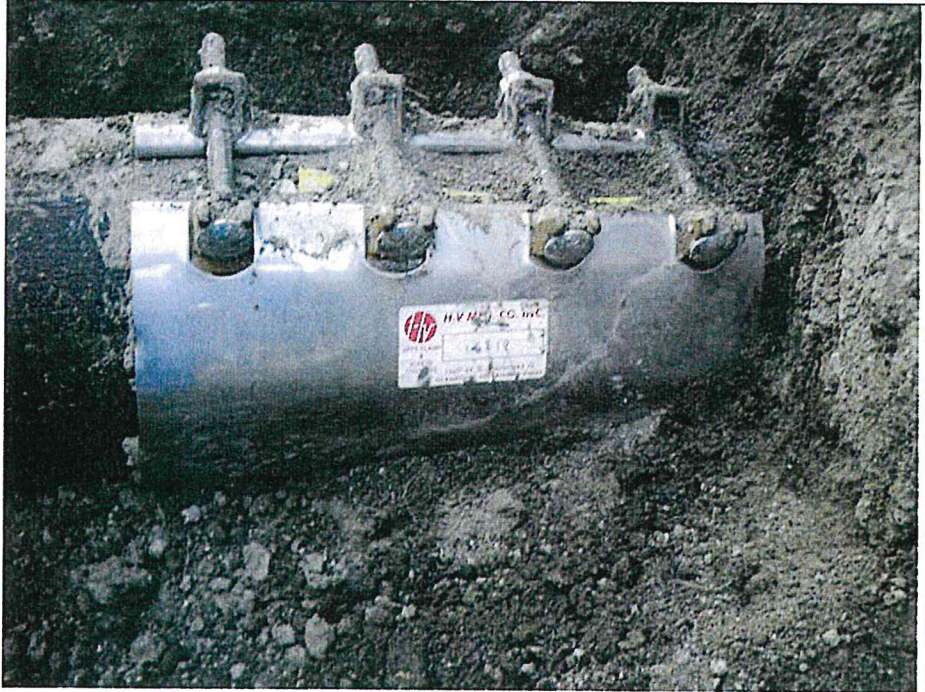
Description: Stanley 6" Pipeline at GPS coordinate location of 48° 17' 14.14153" N and 102° 21' 43.07792" W

Photograph No.
2


Photographer:
Plains Pipeline, LP - Contractor


Date:
8/1/12

Comments:
View of temporary clamp.



Client: Chevron Environmental Management Co.	Supplier: Conestoga-Rovers & Associates
Project Name: TDPI Asset – Stanley 6" Pipeline	Site Location: Montrail County, North Dakota

Description: Stanley 6" Pipeline at GPS coordinate location of 48° 17' 14.14153" N and 102° 21' 43.07792" W	
Photograph No. 5	
Photographer: Pro Pipe Corporation	
Date: 11/13/12	
Comments: View of cut section of pipe with temporary clamp.	

Description: Stanley 6" Pipeline at GPS coordinate location of 48° 17' 14.14153" N and 102° 21' 43.07792" W	
Photograph No. 6	
Photographer: Pro Pipe Corporation	
Date: 11/13/12	
Comments: View of pipeline with affixed PLIDCO® mechanical caps.	