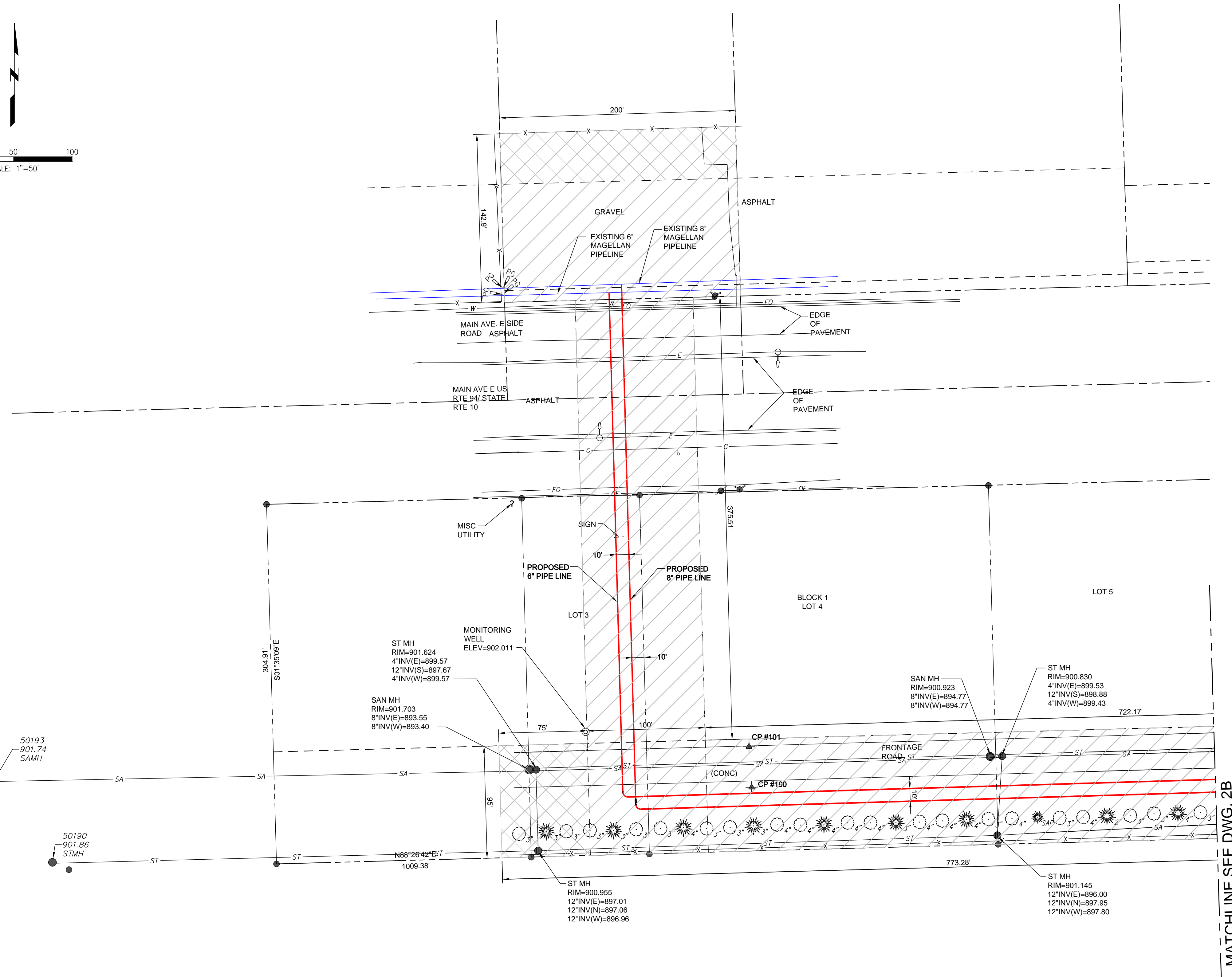
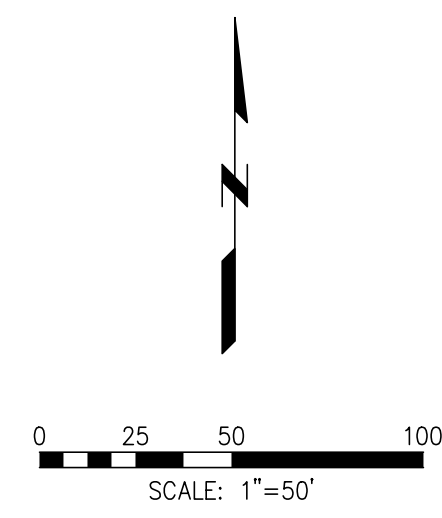


Appendix A

Engineering Documents



LEGEND

EXISTING

- REBAR
- ✦ CONTROL POINT
- PETROLEUM LINE MARKER
- FIRE HYDRANT
- WATER METER
- △ FLARED END SECTION
- STORM MANHOLE
- SANITARY MANHOLE
- CATCH BASIN
- ⊙ MONITORING WELL
- ▲ SANITARY CLEAN OUT
- ▭ TELEVISION PEDESTAL
- ▭ TELEPHONE PEDESTAL
- ▲ ELECTRIC TRANSFORMER
- UTILITY POLE
- ← DOWN GUY
- LIGHT POLE
- ELECTRICAL OUTLET
- ▭ SIGN
- DECIDUOUS TREE
- EVERGREEN
- RIGHT-OF-WAY
- x-x- FENCE
- oe- OVERHEAD ELECTRIC
- e- UNDERGROUND ELECTRIC
- fo- UNDERGROUND FIBER OPTIC
- tv- UNDERGROUND TELEVISION
- t- UNDERGROUND TELEPHONE
- w- WATER MAIN
- g- GAS MAIN
- sa- MAGELLAN PIPE LINE
- st- SANITARY SEWER
- st- STORM SEWER
- - - DETENTION POND CONTOURS

PROPOSED

- MAGELLAN PIPE LINE
- ▨ CONSTRUCTION AREA WITHIN RIGHT-OF-WAY
- ▨ ADDITIONAL AREA FOR CONSTRUCTION/STAGING

CONTROL POINTS

CP	NORTHING	EASTING	ELEVATION
100	2874766.788	461787.059	902.781
101	2874764.579	461821.520	902.757

LENGTH OF RELOCATION

6" PIPE = 2253'
8" PIPE = 2178'

MATCHLINE SEE DWG. 2B

FOR CLIENT REVIEW & APPROVAL
 DATE: 01-12-2012

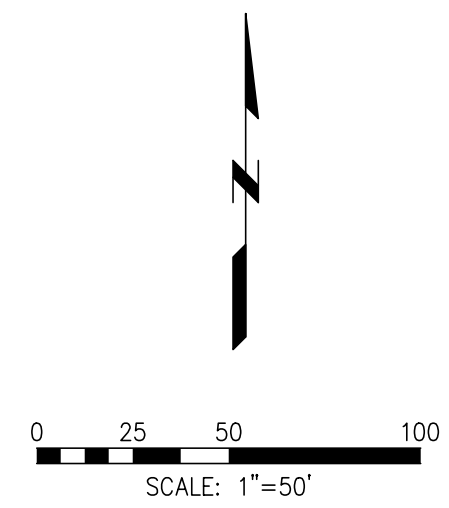
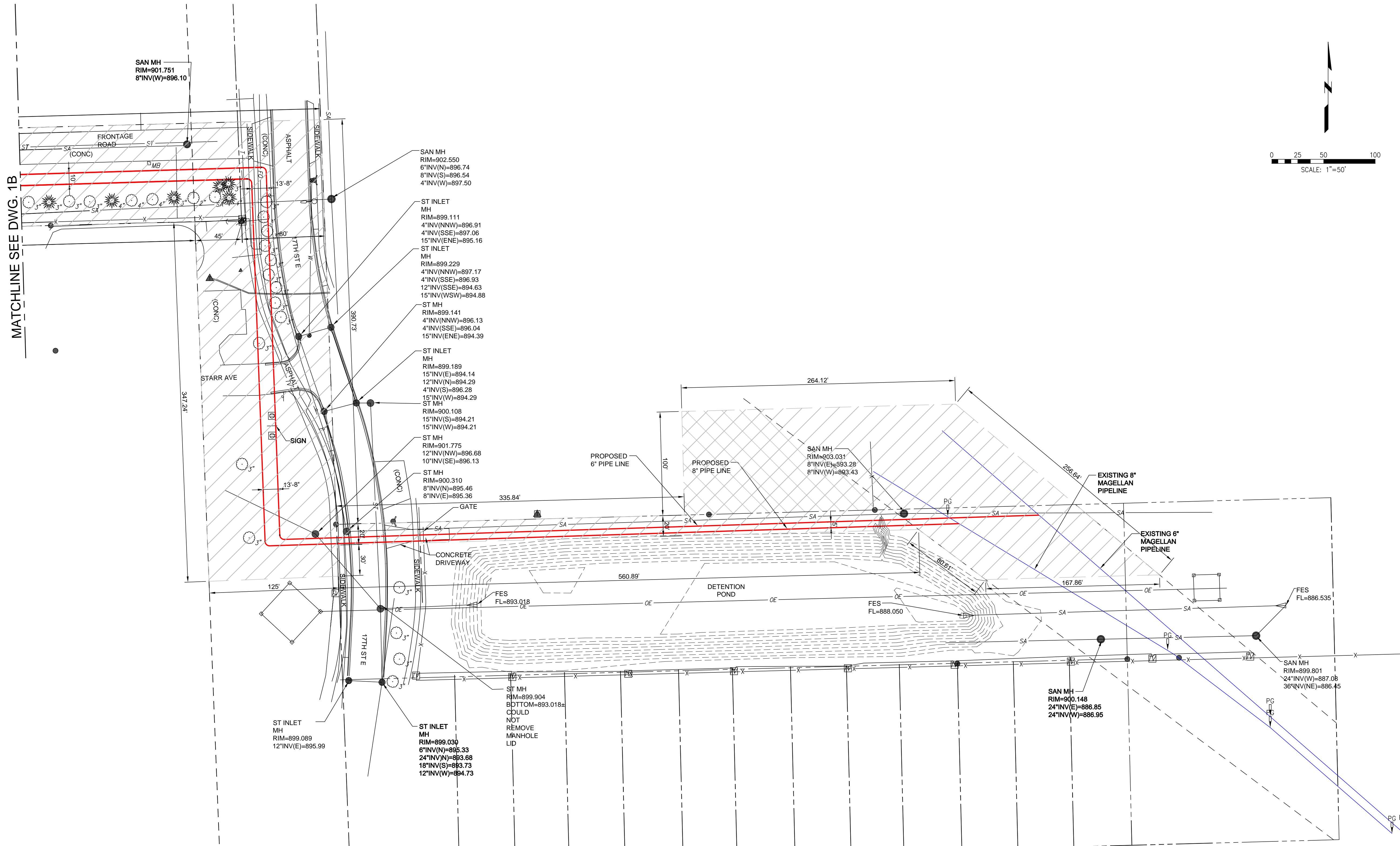
ENGINEERS
ARCHITECTS
SURVEYORS
SCIENTISTS

Farnsworth GROUP

20 ALLEN AVENUE, SUITE 200
ST LOUIS, MISSOURI 63119
(314) 962-7900 / (314) 962-1253 Fax

REVISION NUMBER	DRAWN BY	DATE REVISED	CHECKED BY	PROJECT ENGINEER	APPROVED BY
MAGELLAN MIDSTREAM PARTNERS, L.P. MAGELLAN PIPELINE COMPANY, L.P.					
PROPOSED RELOCATION FOR ROUTE 10 EXPANSION					
CASS COUNTY			NORTH DAKOTA		
DRAWN BY	FGI	SCALE 1" = 50'	A.F.E.	----	
DATE DRAWN	12/29/11	DRAWING NO.			
CHECKED BY	FGI	1B			
PROJECT ENGINEER	RMD				
APPROVED BY	—				

MATCHLINE SEE DWG. 1B

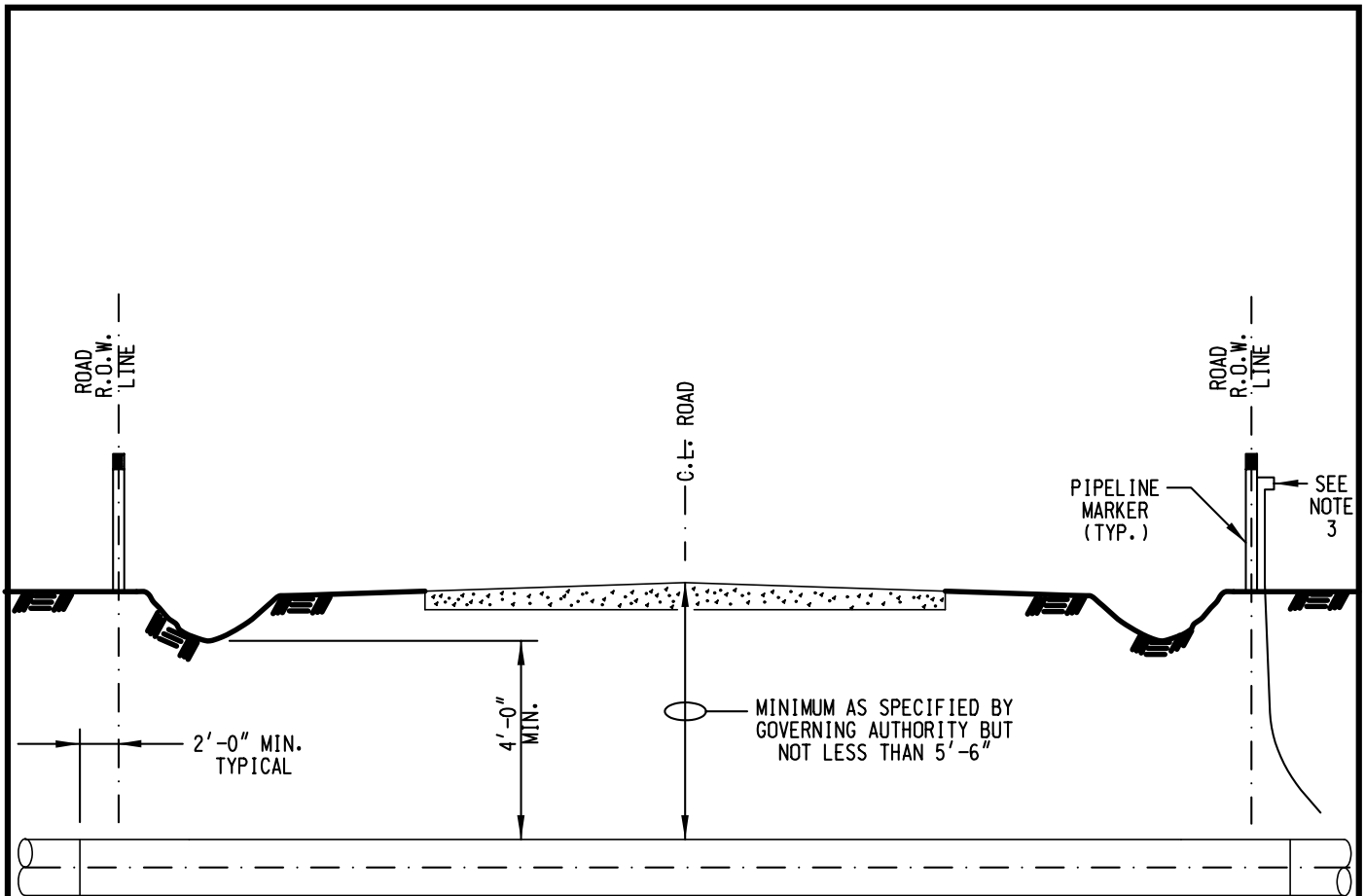


SEE PLAN SHEET 1 FOR LEGEND

FOR CLIENT
 REVIEW & APPROVAL
 DATE: 01-12-2012

ENGINEERS
 ARCHITECTS
 SURVEYORS
 SCIENTISTS
Farnsworth GROUP
 20 ALLEN AVENUE, SUITE 200
 ST LOUIS, MISSOURI 63119
 (314) 962-7900 / (314) 962-1253 Fax

REVISION NUMBER	DRAWN BY	DATE REVISED	CHECKED BY	PROJECT ENGINEER	APPROVED BY
MAGELLAN MIDSTREAM PARTNERS, L.P. MAGELLAN PIPELINE COMPANY, L.P.					
PROPOSED RELOCATION FOR ROUTE 10 EXPANSION					
CASS COUNTY				NORTH DAKOTA	
DRAWN BY	FGI	SCALE 1" = 50'	A.F.E.	----	
DATE DRAWN	12/29/11	DRAWING NO.			
CHECKED BY	FGI	2B			
PROJECT ENGINEER	RMD				
APPROVED BY	--				



NOTES:

1. THIS TYPE OF CROSSING TO BE MADE AT ALL PUBLIC ROADS WHERE HDD IS NOT SPECIFIED. NO CHANGE OF PIPE WILL BE MADE AT CROSSINGS OF PRIVATE ROADS UNLESS SPECIFICALLY REQUESTED.
2. ALL ROAD CROSSINGS SHALL BE BORED CONSTRUCTION. ACTUAL LENGTH OF BORE TO BE DETERMINED IN THE FIELD.
3. INSTALL CATHODIC PROTECTION TEST STATION PER STANDARD DRAWING WHERE DESIGNATED BY COMPANY.



20 ALLEN AVENUE, SUITE 200
 ST LOUIS, MISSOURI 63119
 (314) 962-7900 / (314) 962-1253 Fax

MAGELLAN PIPELINE

TYPICAL ROAD CROSSING SECTION

Project No:
 Book No:
 Drawn by: TMT
 Reviewed: RCD
 Date: 02/03/2012

SKETCH