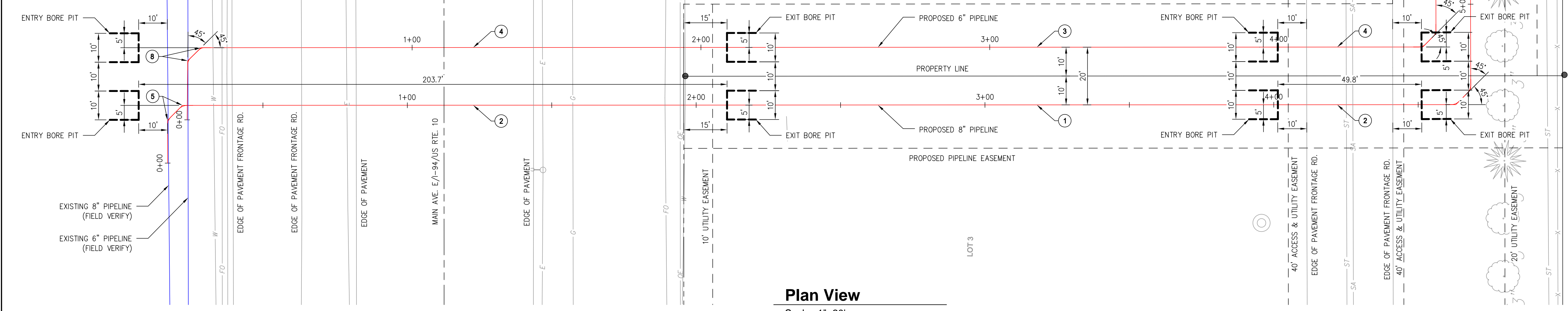
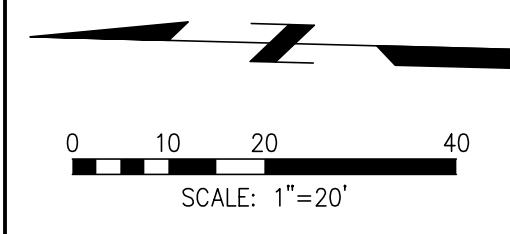
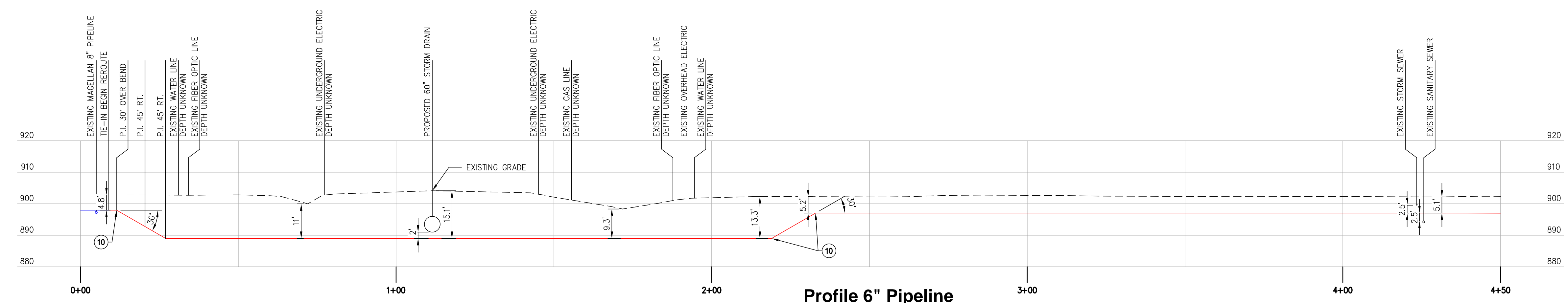


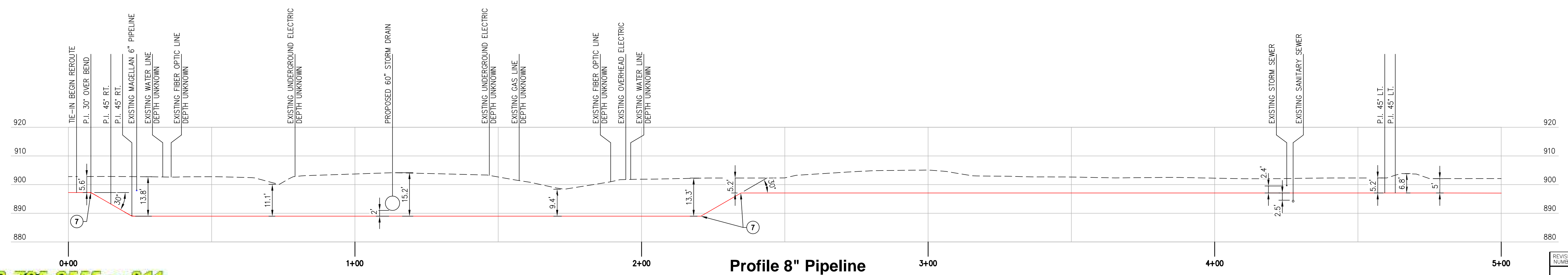
0



Plan View
Scale: 1"=20'



Profile 6" Pipeline
Scale: 1"=20'



Profile 8" Pipeline
Scale: 1"=20'

FOR CLIENT
 REVIEW & APPROVAL
 DATE: 04-03-2012

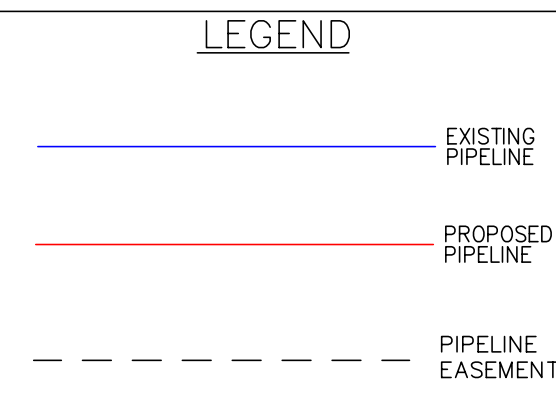
1-800-795-0555 or 811

It's the Law!



DESIGN DATA
 DESIGN CODE: ASME B31.4 DOT 195
 MEASURED LENGTH:
 TRENCH :
 TOTAL :
 RECLAIM :
 DESIGN PRESSURES=

PIPE SPECIFICATIONS
 EXISTING PIPE:
 REROUTED PIPE:



- NOTES:**
1. THE MAGELLAN PIPELINE COMPANY, LP DOES NOT GUARANTEE THE ACCURACY OF THE INFORMATION SHOWN ON THIS DRAWING NOR DOES IT ACCEPT ANY RESPONSIBILITY FOR ERRORS IN LOCATION OR FOR FAILURE TO INDICATE ANY SUCH FACILITIES.
 2. CONTRACTOR TO LOCATE AND VERIFY ELEVATIONS OF ALL UNDERGROUND UTILITIES PRIOR TO BEGINNING CONSTRUCTION.
 3. A MINIMUM CLEARANCE OF 2 FEET BETWEEN THE PROPOSED PIPELINE AND ANY EXISTING FACILITIES SHALL BE MAINTAINED.
 4. CONTRACTOR TO INSTALL WARNING TAPE 2' ABOVE PIPELINE IN TRENCHES.
 5. ALL EXISTING PIPE BETWEEN TIE-IN POINTS SHALL BE RECLAIMED.

ENGINEERS
 ARCHITECTS
 SURVEYORS
 SCIENTISTS

Farnsworth GROUP

20 ALLEN AVENUE, SUITE 200
 ST LOUIS, MISSOURI 63119
 (314) 962-7900 / (314) 962-1253 Fax

REVISION NUMBER	DRAWN BY	DATE REVISED	CHECKED BY	PROJECT ENGINEER	APPROVED BY
MAGELLAN MIDSTREAM PARTNERS, L.P. MAGELLAN PIPELINE COMPANY, L.P.					
RELOCATIONS OF THE 8" LINE AND 6" LINE FOR ROUTE 10 EXPANSION					
CASS COUNTY			NORTH DAKOTA		
DRAWN BY	FGI/RCD	SCALE 1" = 20'	A.F.E. ?		
DATE DRAWN	03-27-12	DRAWING NO.			
CHECKED BY	FGI/RMD				
PROJECT ENGINEER	CRD	P&P1			
APPROVED BY					