



RECEIVED

JUL 23 2012

PUBLIC SERVICE COMMISSION

July 19, 2012

Mr. Darrell Nitschke
Executive Secretary
North Dakota Public Service Commission
600 E. Boulevard, Dept. 408
Bismarck, ND 58505-0480

RE: PU 12-042 Fargo Relocation Project – Cass County, ND
8" Line (Route Permit #142)

Mr. Nitschke:

On April 19, 2012, Magellan Pipeline Company, L.P. (Magellan) received a Certificate of Corridor Compatibility (#132) with Route Permit (#142) for the 8" line in its Fargo Relocation project from the North Dakota Public Service Commission (Commission) (Case No. PU 12-042). E3 Environmental, LLC, on behalf of Magellan, is submitting the attached documentation to fulfill requirements as outlined in the Certification Relating to Order Provisions (#31). The attachments include the following:

- Three (3) paper copies of the corridor approved by the Commission.
- One (1) electronic copy of the corridor approved by the Commission.
- One (1) electronic copy of the approved corridor which can be imported into ERSI GIS mapping software.

Upon your review, should you have questions or seek additional information please contact me at 651-282-0650 or via e-mail at wmccarthy@go2e3.com.

Best Regards,

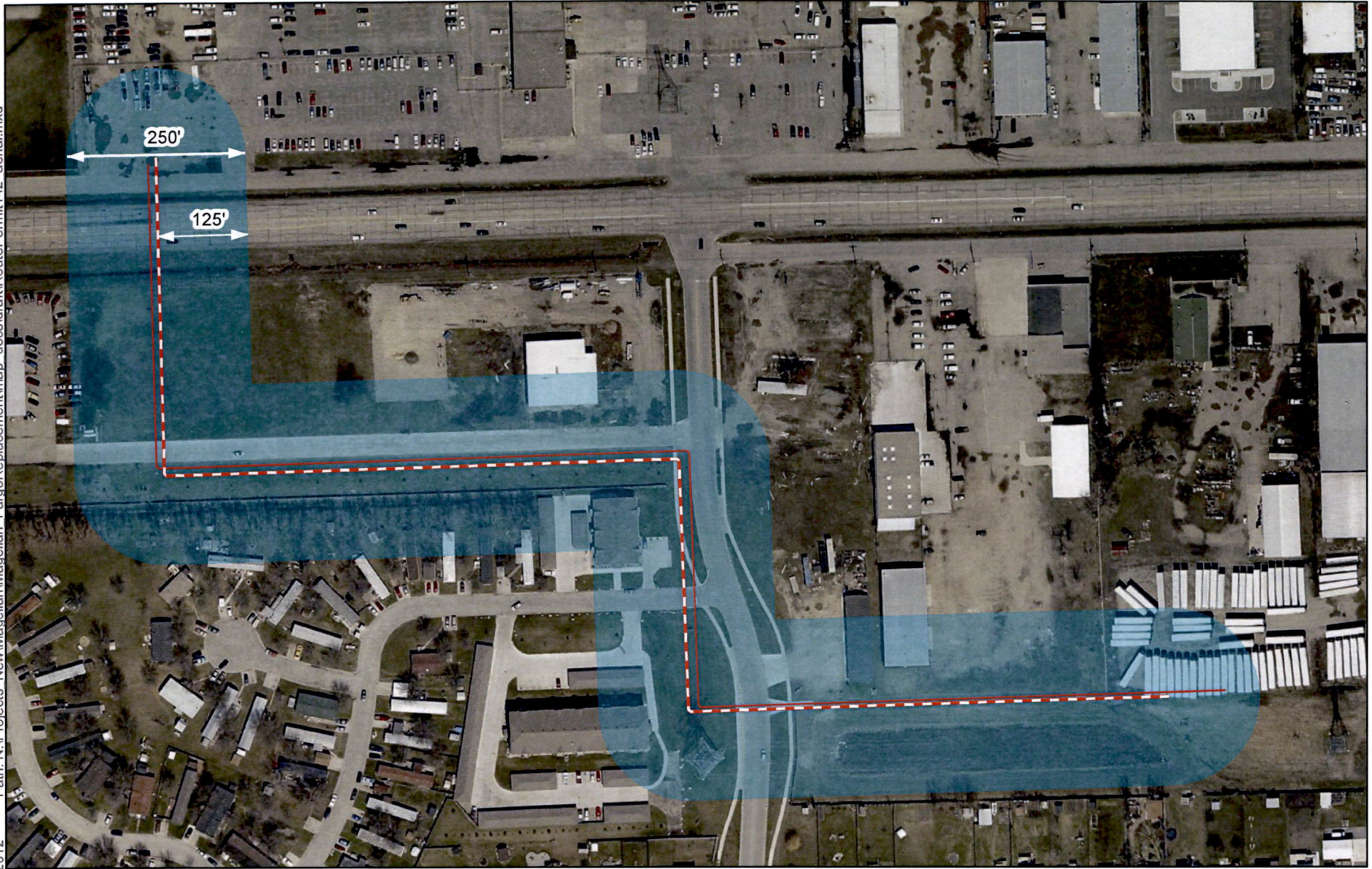
William F. McCarthy
E3 Environmental, LLC

Enclosures - (3) Paper copies of the Commission approved corridor
(1) Flash drive containing an electronic copy of the Commission approved corridor and GIS mapping information

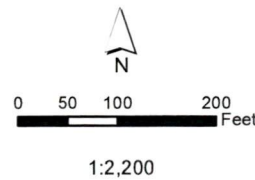
CC: Cynthia Pierce, Magellan Pipeline Company, L.P.
E3 Project Files

55 PU-12-42 Filed: 7/23/2012 Pages: 3
Maps of approved corridor - Route Permit #142

Author: LMD Date: 7/19/2012 Path: N:\Projects New\Magellan\Magellan FargoReplacement\map_docs\draft\RoutePermit142_aerial.mxd



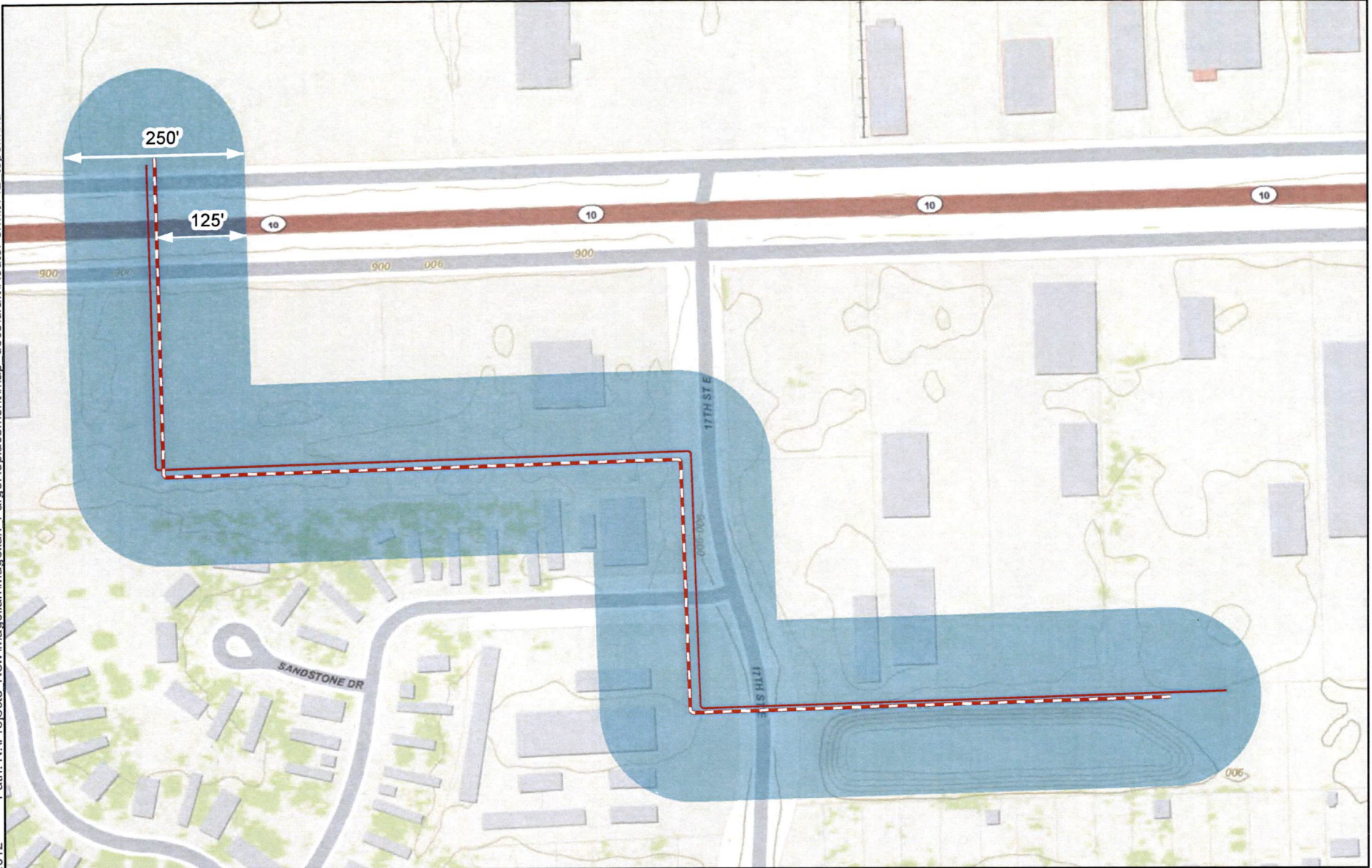
- 8 Inch Pipeline
- 6 Inch Pipeline
- Approved Corridor






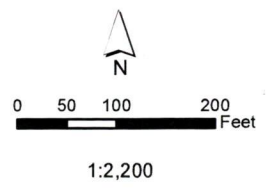
Source: ESRI Online. Map not to scale. Use for environmental review purposes only.

Magellan
Fargo Relocation Project
8" Pipeline
Certificate of Corridor
Compatibility #132
Route Permit #142

Author: LMD Date: 7/19/2012 Path: N:\Projects NewMagellan\Magellan FargoReplacement\map_docs\draft\RoutePermit142_topo.mxd



-  8 Inch Pipeline
-  6 Inch Pipeline
-  Approved Corridor



Source: ESRI Online. Map not to scale. Use for environmental review purposes only.

Magellan
Fargo Relocation Project
8" Pipeline
Certificate of Corridor
Compatibility #132
Route Permit #142