



**RECEIVED**

JUL 23 2012

**PUBLIC SERVICE COMMISSION**

July 19, 2012

Mr. Darrell Nitschke  
Executive Secretary  
North Dakota Public Service Commission  
600 E. Boulevard, Dept. 408  
Bismarck, ND 58505-0480

RE: PU 12-042 Fargo Relocation Project – Cass County, ND  
6" Line (Route Permit #141)

Mr. Nitschke:

On April 19, 2012, Magellan Pipeline Company, L.P. (Magellan) received a Certificate of Corridor Compatibility (#132) with Route Permit (#141) for the 6" line in its Fargo Relocation project from the North Dakota Public Service Commission (Commission) (Case No. PU 12-042). E3 Environmental, LLC, on behalf of Magellan, is submitting the attached documentation to fulfill requirements as outlined in the Certification Relating to Order Provisions (#31). The attachments include the following:

- Three (3) paper copies of the corridor approved by the Commission.
- One (1) electronic copy of the corridor approved by the Commission.
- One (1) electronic copy of the approved corridor which can be imported into ERSI GIS mapping software.

Upon your review, should you have questions or seek additional information please contact me at 651-282-0650 or via e-mail at [wmccarthy@go2e3.com](mailto:wmccarthy@go2e3.com).

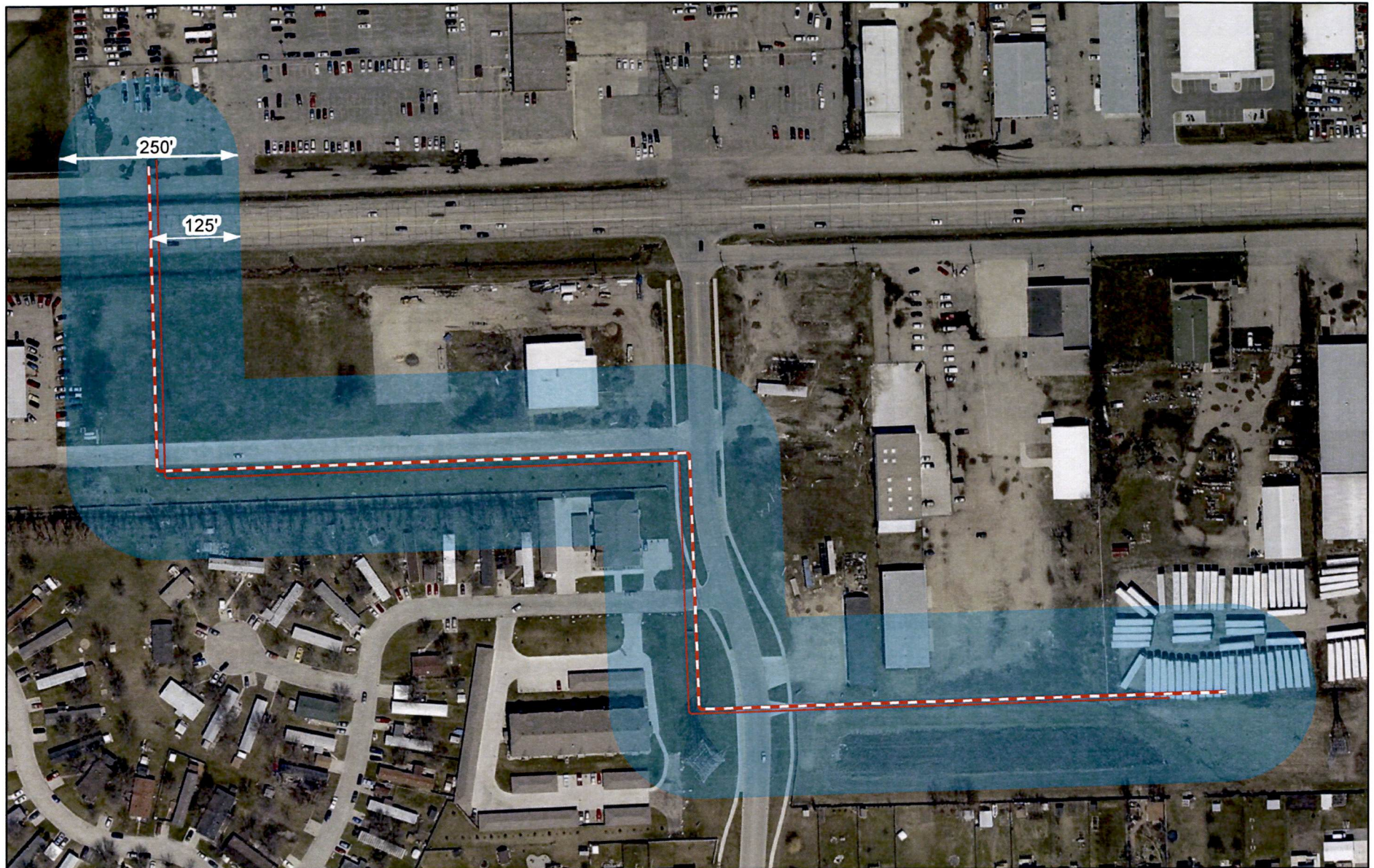
Best Regards,

A handwritten signature in blue ink, appearing to read 'W. F. McCarthy', is written over a faint, larger version of the signature.

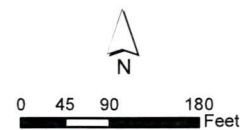
William F. McCarthy  
E3 Environmental, LLC

Enclosures - (3) Paper copies of the Commission approved corridor  
(1) Flash drive containing an electronic copy of the Commission approved corridor and GIS mapping information

CC: Cynthia Pierce, Magellan Pipeline Company, L.P.  
E3 Project Files



- 6 Inch Pipeline
- 8 Inch Pipeline
- Approved Corridor

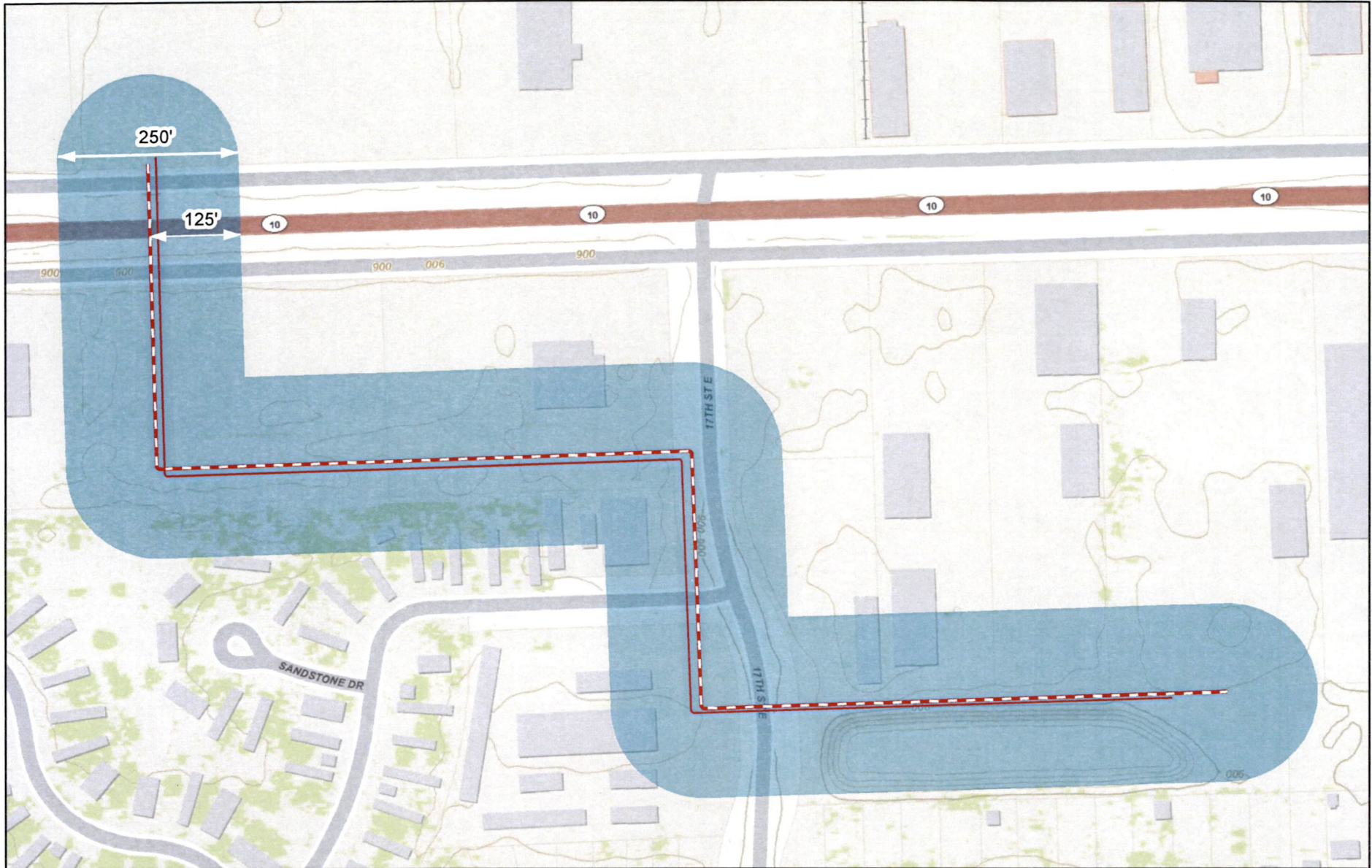


1:2,200

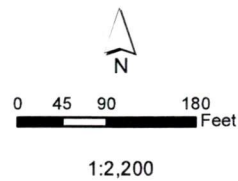


Source: ESRI Online, Map not to scale. Use for environmental review purposes only.

**Magellan**  
 Fargo Relocation Project  
 6" Pipeline  
 Certificate of Corridor  
 Compatibility #132  
 Route Permit #141



- 6 Inch Pipeline
- 8 Inch Pipeline
- Approved Corridor



Source: ESRI Online, Map not to scale. Use for environmental review purposes only.

**Magellan**  
 Fargo Relocation Project  
 6" Pipeline  
 Certificate of Corridor  
 Compatibility #132  
 Route Permit #141