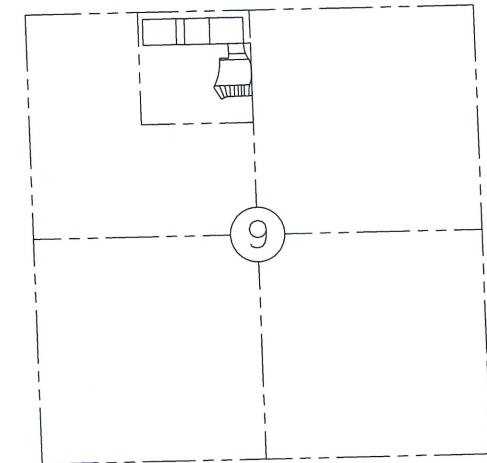


US 10 FARGO

RECORD DRAWINGS FOR PIPELINE RELOCATION

WEST FARGO, NORTH DAKOTA

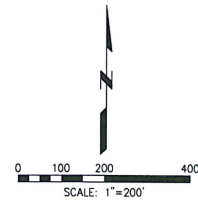
R 139 N



R
49
W

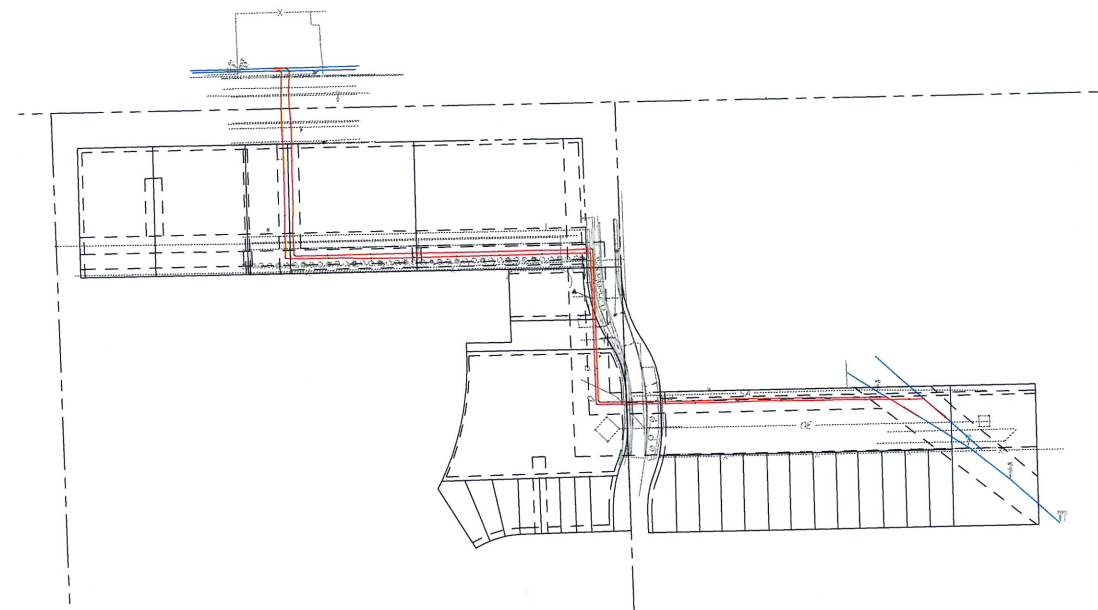
LOCATION MAP

NE 1/4, OF NW 1/4, SEC. 9, T139N, R49W
CASS COUNTY, NORTH DAKOTA



Index Of Drawings

1. COVER SHEET
2. P&P 1
3. P&P 2
4. P&P 3
5. P&P 4



FOR CLIENT REVIEW & APPROVAL
 DATE: 02-15-2013

1-800-795-0555 or 611

It's the Law!



DESIGN DATA

DESIGN CODE: ASME B31.4 DOT 195
 MEASURED LENGTH:
 TRENCH :
 TOTAL :
 RECLAIM :
 DESIGN PRESSURES=

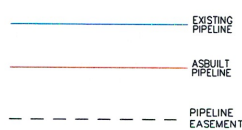
PIPE SPECIFICATIONS

EXISTING PIPE:
 ALEXANDRIA - FARGO #2-8" - 8 3/4" O.D., 0.203" W.T., ERW
 ALEXANDRIA - GRAND FORKS #1-6" - 6 3/4" O.D., 0.188" W.T., ERW

REROUTED TRENCH PIPE:
 ALEXANDRIA - FARGO #2-8" - 8 3/4" O.D., 0.322" W.T., API 5L-X52 PSL2, 14-16 MIL FBE, PEB 30 DEG
 ALEXANDRIA - GRAND FORKS #1-6" - 6 3/4" O.D., 0.280" W.T., API 5L-X52 PSL2, 14-16 MIL FBE, PEB 30 DEG

REROUTE CONVENTIONAL BORE/HDD PIPE:
 ALEXANDRIA - FARGO #2-8" - 8 3/4" O.D., 0.322" W.T., API 5L-X52 PSL2, 14-16 MIL FBE, 20-40 MIL ARO, PEB 30 DEG
 ALEXANDRIA - GRAND FORKS #1-6" - 6 3/4" O.D., 0.280" W.T., API 5L-X52 PSL2, 14-16 MIL FBE, 20-40 MIL ARO, PEB 30 DEG

LEGEND



NOTES:

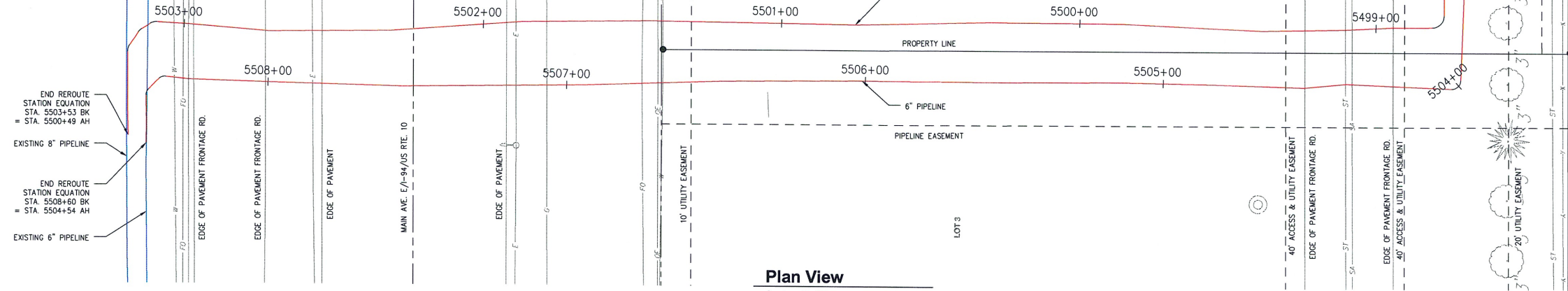
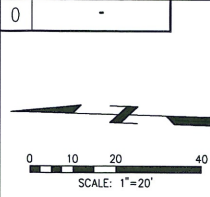
1. THE MAGELLAN PIPELINE COMPANY, LP DOES NOT GUARANTEE THE ACCURACY OF THE INFORMATION SHOWN ON THIS DRAWING NOR DOES IT ACCEPT ANY RESPONSIBILITY FOR ERRORS IN LOCATION OR FOR FAILURE TO INDICATE ANY SUCH FACILITIES.
2. CONTRACTOR TO LOCATE AND VERIFY ELEVATIONS OF ALL UNDERGROUND UTILITIES PRIOR TO BEGINNING CONSTRUCTION.
3. A MINIMUM CLEARANCE OF 2 FEET BETWEEN THE PROPOSED PIPELINE AND ANY EXISTING FACILITIES SHALL BE MAINTAINED.
4. CONTRACTOR TO INSTALL WARNING TAPE 2' ABOVE PIPELINE IN TRENCHES.
5. ALL EXISTING PIPE BETWEEN TIE-IN POINTS SHALL BE RECLAIMED.

ENGINEERS
 ARCHITECTS
 SURVEYORS
 SCIENTISTS

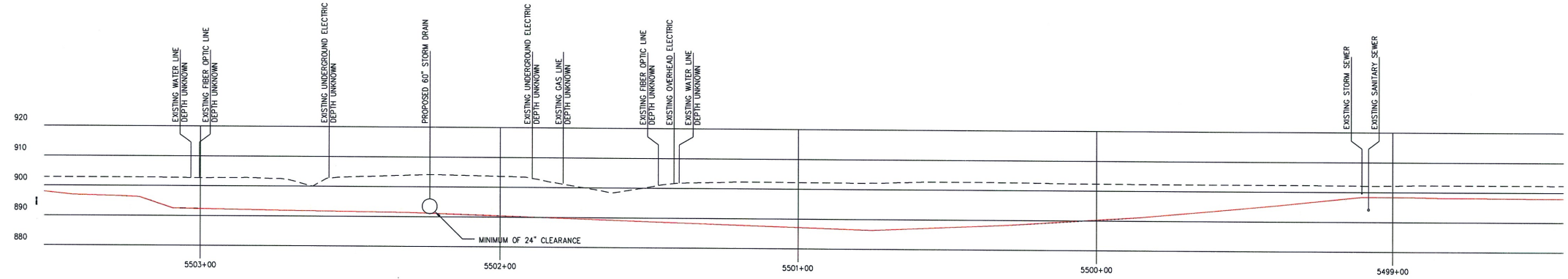
Farnsworth GROUP

20 ALLEN AVENUE, SUITE 200
 ST LOUIS, MISSOURI 63119
 (314) 962-7900 / (314) 962-1253 Fax

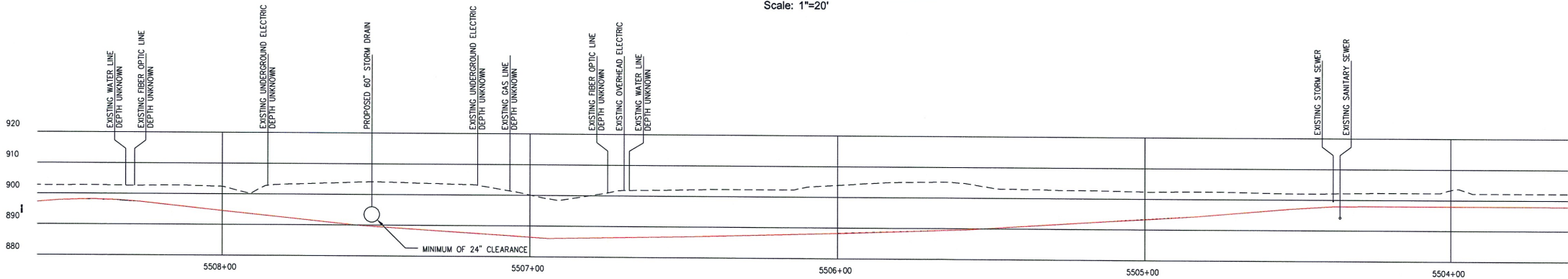
REVISION NUMBER	DRAWN BY	DATE REVISED	CHECKED BY	PROJECT ENGINEER	APPROVED BY
 MAGELLAN PIPELINE COMPANY, L.P.					
RECORD DRAWINGS FOR RELOCATION OF 8" LINE AND 6" LINE FOR HWY 10 EXPANSION					
CASS COUNTY			NORTH DAKOTA		
DRAWN BY	FGI/RCD	SCALE 1" = 200'	A.F.E.	280-2012-8465	
DATE DRAWN	03-27-12	DRAWING NO.			
CHECKED BY	FGI/RMD	COVER			
PROJECT ENGINEER	CRD				
APPROVED BY	??				



Plan View
Scale: 1"=20'



Profile 8" Pipeline
Scale: 1"=20'



Profile 6" Pipeline
Scale: 1"=20'

FOR CLIENT REVIEW & APPROVAL
 DATE: 02-15-2013

1-800-795-0555 or 811

It's the Law!



DESIGN DATA

DESIGN CODE: ASME B31.4 DOT 195

MEASURED LENGTH:

TRENCH:

TOTAL:

RECLAIM:

DESIGN PRESSURES=

PIPE SPECIFICATIONS

EXISTING PIPE:

ALEXANDRIA - FARGO #2-8" - 8 3/4" O.D., 0.203" W.T., ERW

ALEXANDRIA - GRAND FORKS #1-6" - 6 3/4" O.D., 0.188" W.T., ERW

RELOCATED TRENCH PIPE:

ALEXANDRIA - FARGO #2-8" - 8 3/4" O.D., 0.322" W.T., API 5L-X52 PSL2, 14-16 MIL FBE, PEB 30 DEG

ALEXANDRIA - GRAND FORKS #1-6" - 6 3/4" O.D., 0.280" W.T., API 5L-X52 PSL2, 14-16 MIL FBE, PEB 30 DEG

RELOCATE CONVENTIONAL BORE/HDD PIPE:

ALEXANDRIA - FARGO #2-8" - 8 3/4" O.D., 0.322" W.T., API 5L-X52 PSL2, 14-16 MIL FBE, 20-40 MIL ARO, PEB 30 DEG

ALEXANDRIA - GRAND FORKS #1-6" - 6 3/4" O.D., 0.280" W.T., API 5L-X52 PSL2, 14-16 MIL FBE, 20-40 MIL ARO, PEB 30 DEG

LEGEND

— EXISTING PIPELINE

— ASBUILT PIPELINE

- - - PIPELINE EASEMENT

- NOTES:**
1. THE MACELLAN PIPELINE COMPANY, LP DOES NOT GUARANTEE THE ACCURACY OF THE INFORMATION SHOWN ON THIS DRAWING NOR DOES IT ACCEPT ANY RESPONSIBILITY FOR ERRORS IN LOCATION OR FOR FAILURE TO INDICATE ANY SUCH FACILITIES.
 2. CONTRACTOR TO LOCATE AND VERIFY ELEVATIONS OF ALL UNDERGROUND UTILITIES PRIOR TO BEGINNING CONSTRUCTION.
 3. A MINIMUM CLEARANCE OF 2 FEET BETWEEN THE PROPOSED PIPELINE AND ANY EXISTING FACILITIES SHALL BE MAINTAINED.
 4. CONTRACTOR TO INSTALL WARNING TAPE 2' ABOVE PIPELINE IN TRENCHES.
 5. ALL EXISTING PIPE BETWEEN TIE-IN POINTS SHALL BE RECLAIMED.

ENGINEERS

ARCHITECTS

SURVEYORS

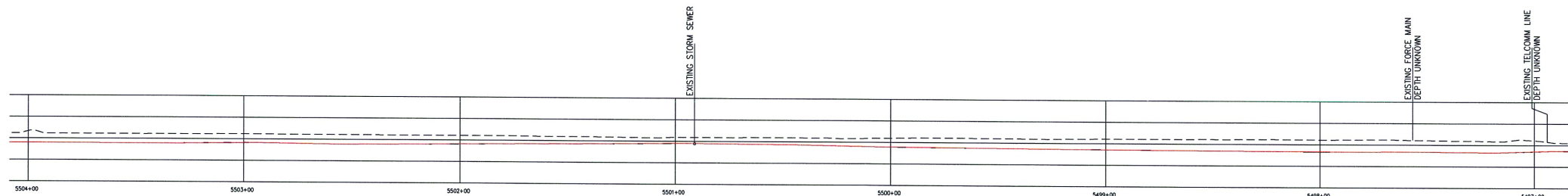
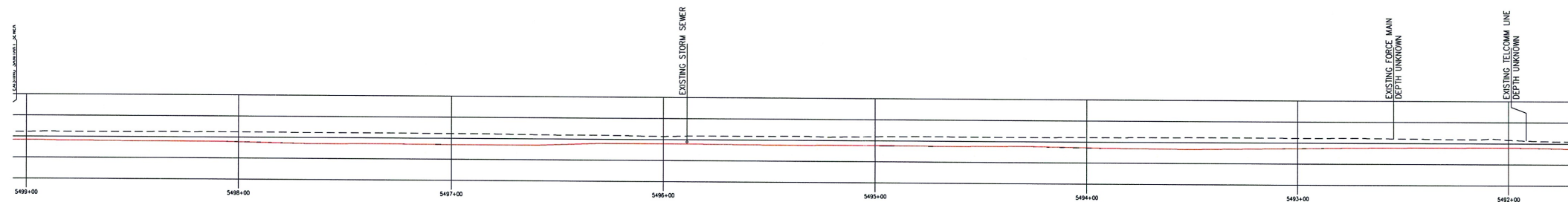
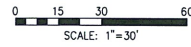
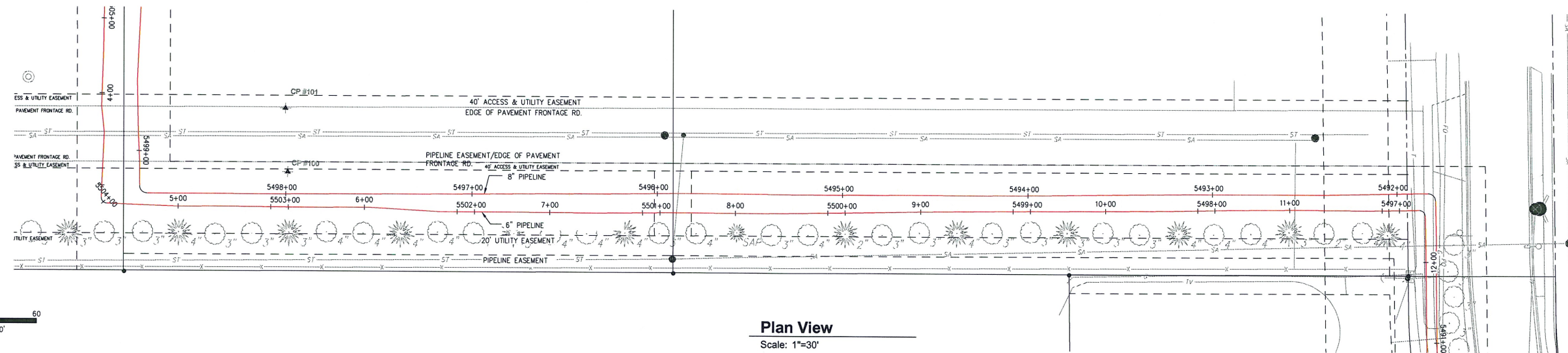
SCIENTISTS

Farnsworth GROUP

20 ALLEN AVENUE, SUITE 200
ST LOUIS, MISSOURI 63116
314.962-7902 / 314.962-1253 Fax

REVISION NUMBER	DRAWN BY	DATE REVISED	CHECKED BY	PROJECT ENGINEER	APPROVED BY
 MAGELLAN PIPELINE COMPANY, L.P.					
RECORD DRAWINGS FOR RELOCATION OF 8" LINE AND 6" LINE FOR HWY 10 EXPANSION					
CASS COUNTY			NORTH DAKOTA		
DRAWN BY	FGI/RCD	SCALE 1" = 20'	DATE DRAWN	03-27-12	PROJECT NO. 280-2012-8465
CHECKED BY	FGI/RMD	DRAWING NO.			
PROJECT ENGINEER	CRD	P&P1			
APPROVED BY					

0



FOR CLIENT REVIEW & APPROVAL
DATE: 02-15-2013

1-800-795-0555 or 811

It's the Law!



DESIGN DATA
 DESIGN CODE: ASME B31.4 DOT 195
 MEASURED LENGTH:
 TRENCH :
 TOTAL :
 RECLAIM :
 DESIGN PRESSURES=

PIPE SPECIFICATIONS
EXISTING PIPE:
 ALEXANDRIA - FARGO #2-8" - 8 3/4" O.D., 0.203" W.T., ERW
 ALEXANDRIA - GRAND FORKS #1-6" - 6 3/4" O.D., 0.188" W.T., ERW
REROUTED TRENCH PIPE:
 ALEXANDRIA - FARGO #2-8" - 8 3/4" O.D., 0.322" W.T., API 5L-X52 PSL2,
 14-15 MIL FBE, PEB 30 DEG.
 ALEXANDRIA - GRAND FORKS #1-6" - 6 3/4" O.D., 0.280" W.T., API
 5L-X52 PSL2, 14-16 MIL FBE, PEB 30 DEG.
REROUTE CONVENTIONAL BORE/HDD PIPE
 ALEXANDRIA - FARGO #2-8" - 8 3/4" O.D., 0.322" W.T., API 5L-X52 PSL2,
 14-15 MIL FBE, 20-40 MIL ARO, PEB 30 DEG.
 ALEXANDRIA - GRAND FORKS #1-6" - 6 3/4" O.D., 0.280" W.T., API
 5L-X52 PSL2, 14-16 MIL FBE, 20-40 MIL ARO, PEB 30 DEG.

LEGEND

 - - - - - EXISTING PIPELINE
 - - - - - AS-BUILT PIPELINE
 - - - - - PIPELINE EASEMENT

NOTES:
 1. THE MACELLAN PIPELINE COMPANY, LP DOES NOT GUARANTEE THE ACCURACY OF THE INFORMATION SHOWN ON THIS DRAWING NOR DOES IT ACCEPT ANY RESPONSIBILITY FOR ERRORS IN LOCATION OR FOR FAILURE TO INDICATE ANY SUCH FACILITIES.
 2. CONTRACTOR TO LOCATE AND VERIFY ELEVATIONS OF ALL UNDERGROUND UTILITIES PRIOR TO BEGINNING CONSTRUCTION.
 3. A MINIMUM CLEARANCE OF 2 FEET BETWEEN THE PROPOSED PIPELINE AND ANY EXISTING FACILITIES SHALL BE MAINTAINED.
 4. CONTRACTOR TO INSTALL WARNING TAPE 2' ABOVE PIPELINE IN TRENCHES.
 5. ALL EXISTING PIPE BETWEEN TIE-IN POINTS SHALL BE RECLAIMED.

ENGINEERS
ARCHITECTS
SURVEYORS
SCIENTISTS
Farnsworth GROUP
 20 ALLEN AVENUE, SUITE 200
 ST LOUIS, MISSOURI 63119
 (314) 962-7900 / (314) 962-1253 Fax

REVISION NUMBER	DRAWN BY	DATE REVISED	CHECKED BY	PROJECT ENGINEER	APPROVED BY
	FGI/RCD	03-27-12	FGI/RMD	CRD	??

MAGELLAN
 MIDSTREAM PARTNERS, L.P.
MAGELLAN PIPELINE COMPANY, L.P.

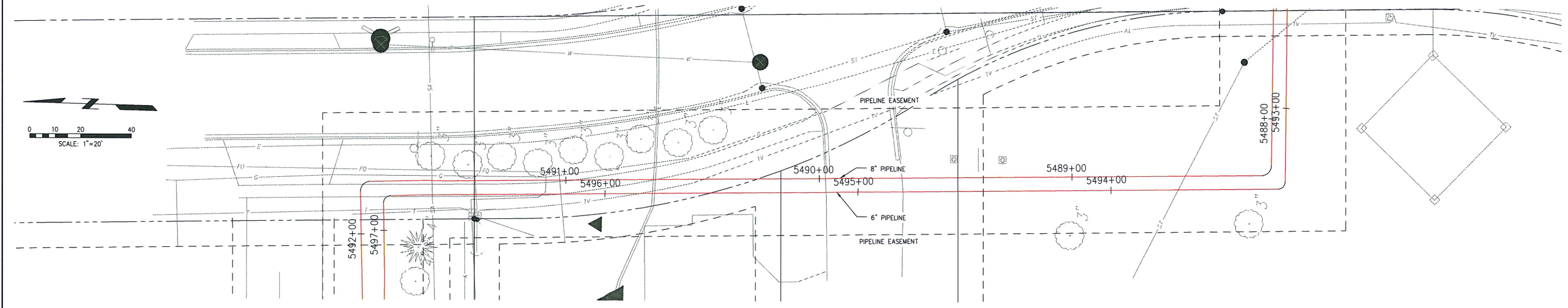
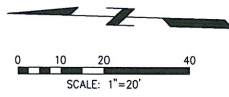
RECORD DRAWINGS FOR
 RELOCATION OF 8" LINE AND 6" LINE
 FOR HWY 10 EXPANSION

CASS COUNTY NORTH DAKOTA
 DRAWN BY: FGI/RCD DATE: 03-27-12 SCALE: 1" = 30' A.F.E. 280-2012-8465
 CHECKED BY: FGI/RMD DRAWING NO.
 PROJECT ENGINEER: CRD
 APPROVED BY: ??

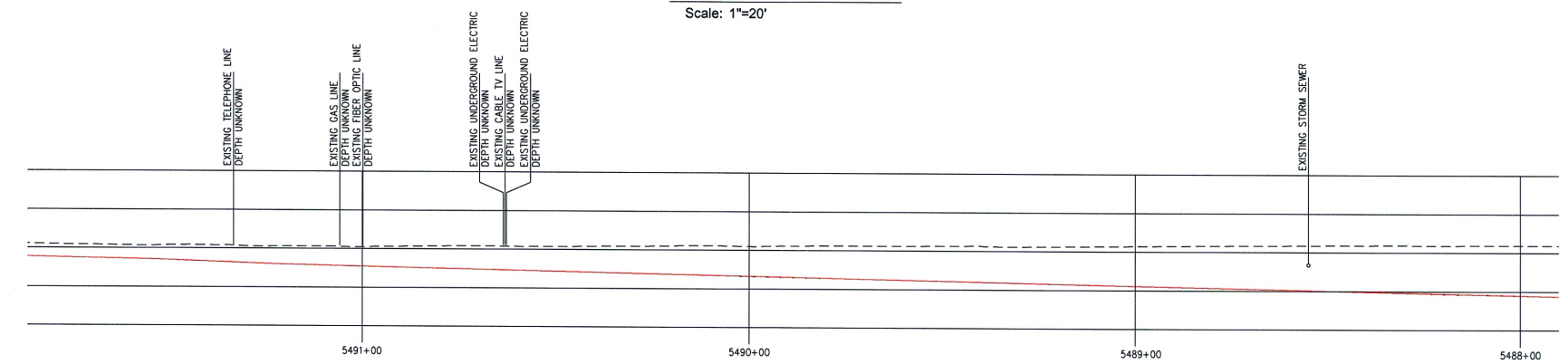
P&P2

0

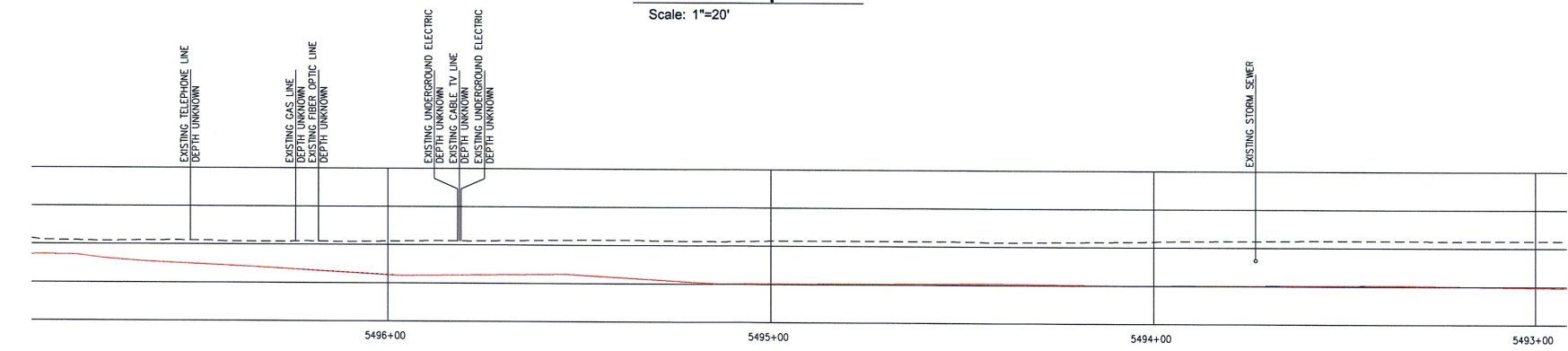
0



Plan View
Scale: 1"=20'



Profile 8" Pipeline
Scale: 1"=20'



Profile 6" Pipeline
Scale: 1"=20'

FOR CLIENT
 REVIEW & APPROVAL
 DATE: 02-15-2013

1-800-795-0555 or 811



DESIGN DATA
 DESIGN CODE: ASME B31.4 DOT 195
 MEASURED LENGTH:
 TRENCH :
 TOTAL :
 RECLAIM :
 DESIGN PRESSURES=

PIPE SPECIFICATIONS
 EXISTING PIPE:
 ALEXANDRIA - FARGO #2-8" - 8 5/8" O.D., 0.203" W.T., ERW
 ALEXANDRIA - GRAND FORKS #1-6" - 6 5/8" O.D., 0.188" W.T., ERW
 REROUTED TRENCH PIPE:
 ALEXANDRIA - FARGO #2-8" - 8 5/8" O.D., 0.322" W.T., API 5L-X52 PSL2, 14-16 MIL FBE, PEB 30 DEG.
 ALEXANDRIA - GRAND FORKS #1-6" - 6 5/8" O.D., 0.280" W.T., API 5L-X52 PSL2, 14-16 MIL FBE, PEB 30 DEG.
 REROUTE CONVENTIONAL BORE/HDD PIPE:
 ALEXANDRIA - FARGO #2-8" - 8 5/8" O.D., 0.322" W.T., API 5L-X52 PSL2, 14-16 MIL FBE, 20-40 MIL ARO, PEB 30 DEG.
 ALEXANDRIA - GRAND FORKS #1-6" - 6 5/8" O.D., 0.280" W.T., API 5L-X52 PSL2, 14-16 MIL FBE, 20-40 MIL ARO, PEB 30 DEG.

LEGEND

	EXISTING PIPELINE
	AS-BUILT PIPELINE
	PIPELINE EASEMENT

- NOTES:**
1. THE MAGELLAN PIPELINE COMPANY, LP DOES NOT GUARANTEE THE ACCURACY OF THE INFORMATION SHOWN ON THIS DRAWING NOR DOES IT ACCEPT ANY RESPONSIBILITY FOR ERRORS IN LOCATION OR FOR FAILURE TO INDICATE ANY SUCH FACILITIES.
 2. CONTRACTOR TO LOCATE AND VERIFY ELEVATIONS OF ALL UNDERGROUND UTILITIES PRIOR TO BEGINNING CONSTRUCTION.
 3. A MINIMUM CLEARANCE OF 2 FEET BETWEEN THE PROPOSED PIPELINE AND ANY EXISTING FACILITIES SHALL BE MAINTAINED.
 4. CONTRACTOR TO INSTALL WARNING TAPE 2' ABOVE PIPELINE IN TRENCHES.
 5. ALL EXISTING PIPE BETWEEN TIE-IN POINTS SHALL BE RECLAIMED.

**ENGINEERS
 ARCHITECTS
 SURVEYORS
 SCIENTISTS**

**Farnsworth
 GROUP**

20 ALLEN AVENUE, SUITE 200
 ST LOUIS, MISSOURI 63114
 (314) 962-7900 / (314) 962-1263 Fax

REVISION NUMBER	DRAWN BY	DATE REVISION	CHECKED BY	PROJECT ENGINEER	APPROVED BY

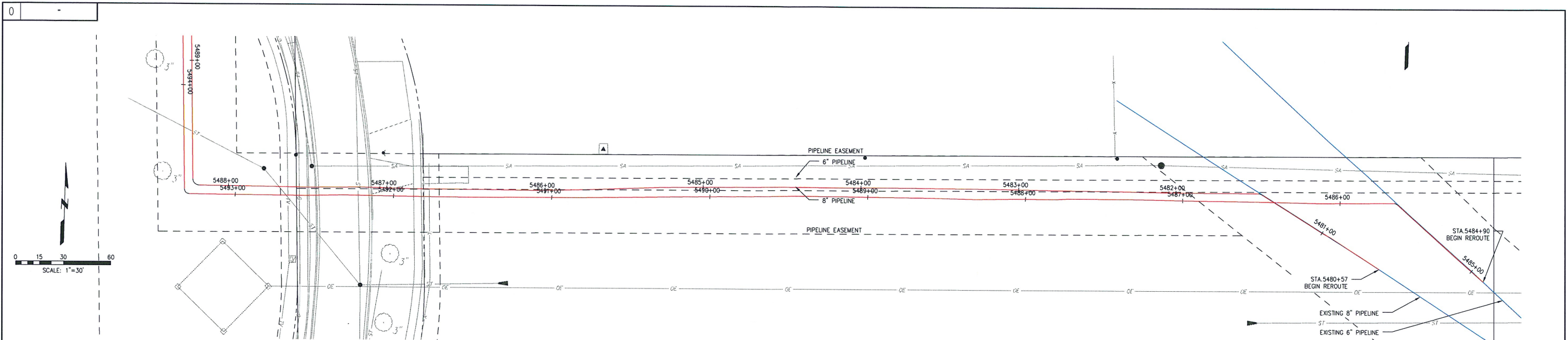
MAGELLAN
 MIDSTREAM PARTNERS, L.P.
MAGELLAN PIPELINE COMPANY, L.P.

**RECORD DRAWINGS FOR
 RELOCATION OF 8" LINE AND 6" LINE
 FOR HWY 10 EXPANSION**

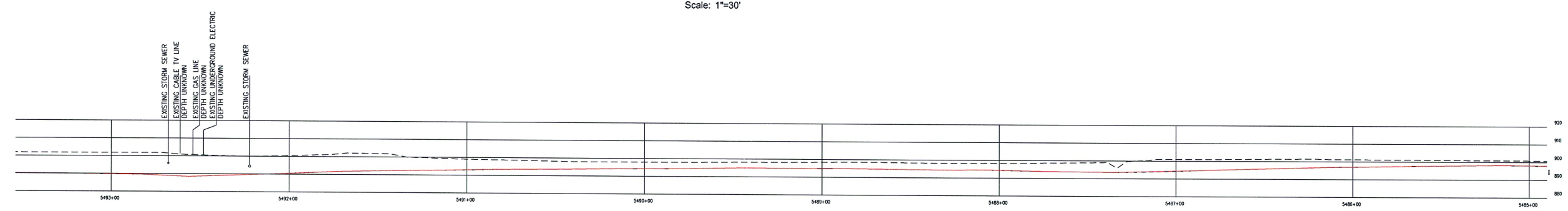
CASS COUNTY NORTH DAKOTA

DRAWN BY	FGI/RCD	SCALE	1" = 20'	DATE DRAWN	03-27-12	DRAWING NO.	AFE 280-2012-8465
CHECKED BY	FGI/RMD						
PROJECT ENGINEER	CRD						
APPROVED BY	??						

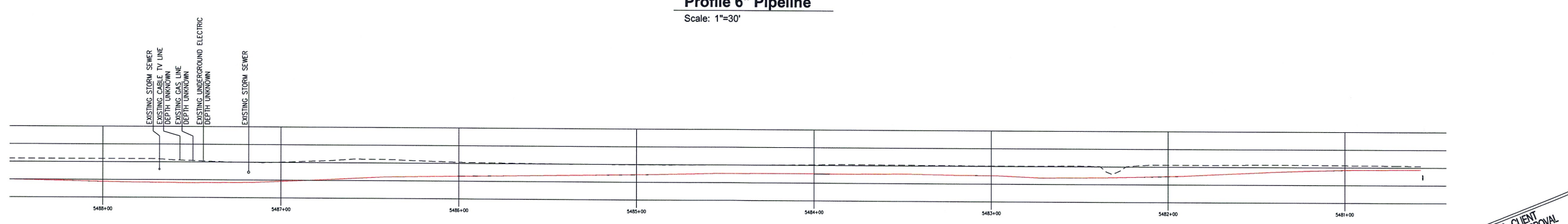
P&P3



Plan View
Scale: 1"=30'



Profile 6" Pipeline
Scale: 1"=30'



Profile 8" Pipeline
Scale: 1"=30'

FOR CLIENT REVIEW & APPROVAL
DATE: 02-15-2013

1-800-795-0555 or 811



DESIGN DATA
DESIGN CODE: ASME B31.4 DOT 195
MEASURED LENGTH:
TRENCH :
TOTAL :
RECLAIM :
DESIGN PRESSURES=

PIPE SPECIFICATIONS
EXISTING PIPE:
ALEXANDRIA - FARGO #2-8" - 8 3/4" O.D., 0.203" W.T., ERW
ALEXANDRIA - GRAND FORKS #1-6" - 6 3/4" O.D., 0.188" W.T., ERW
REROUTED TRENCH PIPE:
ALEXANDRIA - FARGO #2-8" - 8 3/4" O.D., 0.322" W.T., API 5L-X52 PSL2, 14-16 MIL FBE, FEB 30 DEG
ALEXANDRIA - GRAND FORKS #1-6" - 6 3/4" O.D., 0.280" W.T., API 5L-X52 PSL2, 14-16 MIL FBE, FEB 30 DEG
REROUTE CONVENTIONAL BORE/ADD PIPE:
ALEXANDRIA - FARGO #2-8" - 8 3/4" O.D., 0.322" W.T., API 5L-X52 PSL2, 14-16 MIL FBE, 20-40 MIL ARO, FEB 30 DEG
ALEXANDRIA - GRAND FORKS #1-6" - 6 3/4" O.D., 0.280" W.T., API 5L-X52 PSL2, 14-16 MIL FBE, 20-40 MIL ARO, FEB 30 DEG

LEGEND
--- EXISTING PIPELINE
--- AS-BUILT PIPELINE
--- PIPELINE EASEMENT

NOTES:
1. THE MAGELLAN PIPELINE COMPANY, LP DOES NOT GUARANTEE THE ACCURACY OF THE INFORMATION SHOWN ON THIS DRAWING NOR DOES IT ACCEPT ANY RESPONSIBILITY FOR ERRORS IN LOCATION OR FOR FAILURE TO INDICATE ANY SUCH FACILITIES.
2. CONTRACTOR TO LOCATE AND VERIFY ELEVATIONS OF ALL UNDERGROUND UTILITIES PRIOR TO BEGINNING CONSTRUCTION.
3. A MINIMUM CLEARANCE OF 2 FEET BETWEEN THE PROPOSED PIPELINE AND ANY EXISTING FACILITIES SHALL BE MAINTAINED.
4. CONTRACTOR TO INSTALL WARNING TAPE 2' ABOVE PIPELINE IN TRENCHES.
5. ALL EXISTING PIPE BETWEEN TIE-IN POINTS SHALL BE RECLAIMED.

ENGINEERS ARCHITECTS SURVEYORS SCIENTISTS
Farnsworth GROUP
20 ALLEN AVENUE, SUITE 200
ST LOUIS, MISSOURI 63119
314.962-7000 / 314.962-1263 Fax

REVISION NUMBER	DRAWN BY	DATE REVISED	CHECKED BY	PROJECT ENGINEER	APPROVED BY
MAGELLAN MIDSTREAM PARTNERS, L.P. MAGELLAN PIPELINE COMPANY, L.P.					
RECORD DRAWINGS FOR RELOCATION OF 8" LINE AND 6" LINE FOR HWY 10 EXPANSION					
CASS COUNTY			NORTH DAKOTA		
DRAWN BY	FGI/RCD	SCALE 1" = 30'	DATE DRAWN	03-27-12	PROJECT AFE 280-2012-8465
CHECKED BY	FGI/RMD	DRAWING NO.			
PROJECT ENGINEER	CRD	P&P4			
APPROVED BY	??				