



12300 Elm Creek Boulevard • Maple Grove, Minnesota 55369-4718 • 763-445-5000 • Fax 763-445-5050 • www.GreatRiverEnergy.com

1 February 2012

Mr. Darrell Nitschke, Executive Director
North Dakota Public Service Commission
600 East Boulevard, Dept. 408
Bismarck, ND 58505-0480

RE: Prairie Substation to Ramsey Substation 230 KV Transmission Line Rebuild Project
(the "GD Line Rebuild Project") Segment 3
PSC Case No. PU-11-640
Transmittal of Certification

Dear Mr. Nitschke:

To provide for the overall reliability of the electric transmission system in North Dakota, Great River Energy plans to rebuild (over the next eight years) approximately 80 miles of the existing 230 kV transmission line "GD Line" between the Minnkota Power Cooperative Prairie Substation near Grand Forks, North Dakota and the Great River Energy Ramsey Substation near Devils Lake, North Dakota. This line was originally constructed in 1966. Great River Energy has determined that the structures in Segment 3 (see Figure 1) are in greatest need of replacement; therefore we plan to begin rebuilding that segment in February 2012. The rebuild project will take place within the existing transmission right-of-way, in other words in same location as the line was constructed in 1966. Segment 3 of the rebuild project includes Structures 146 to 226 near Larimore, North Dakota (see Figure 2).

In accordance with North Dakota Century Code 49-22-03 3(a)(3), please find enclosed a notarized certification that the rebuild of Segment 3 will not affect any known exclusion or avoidance area, as those terms are defined in N.D.A.C 69-06-08-02(1) and (2), and that Great River Energy will comply with all applicable conditions and protections in siting laws and rules and commission orders previously issued for any part of the facility.

Please let me know if you need additional information regarding the rebuild of Segment 3 of the Prairie Substation to Ramsey Substation 230 kV "GD" Transmission Line. I can be reached at 763-445-5214, or by email at cschmidt@greenergy.com.

1 PU-12-64 Filed 02/01/2012 Pages: 17
Letter enclosing certification
Great River Energy

1 February 2012
Mr. Darrell Nitschke
Page 2

Thank you for your attention to this important transmission project.

Respectfully submitted,

GREAT RIVER ENERGY

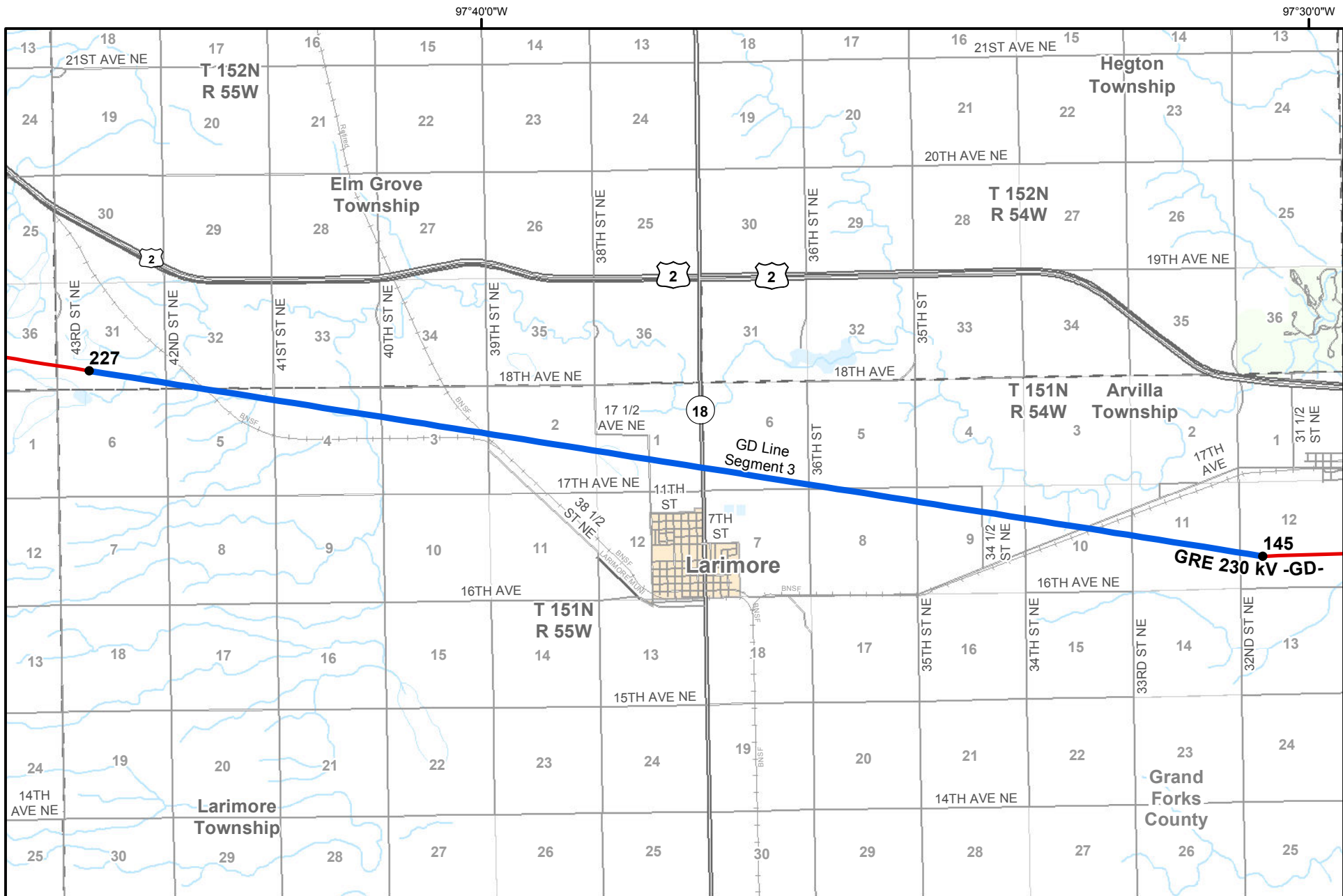





Carole L. Schmidt
Supervisor, Transmission Permitting and Compliance



Enclosures

c: Jerry Lein, ND PSC
Chuck Lukkarila, GRE

s:\legal\environmental\transmission\projects\76901 Prairie to Ramsey Rebuild\Prairie-Ramsey Segment 3 Rebuild PSC Cert Letter 2-1-12.docx

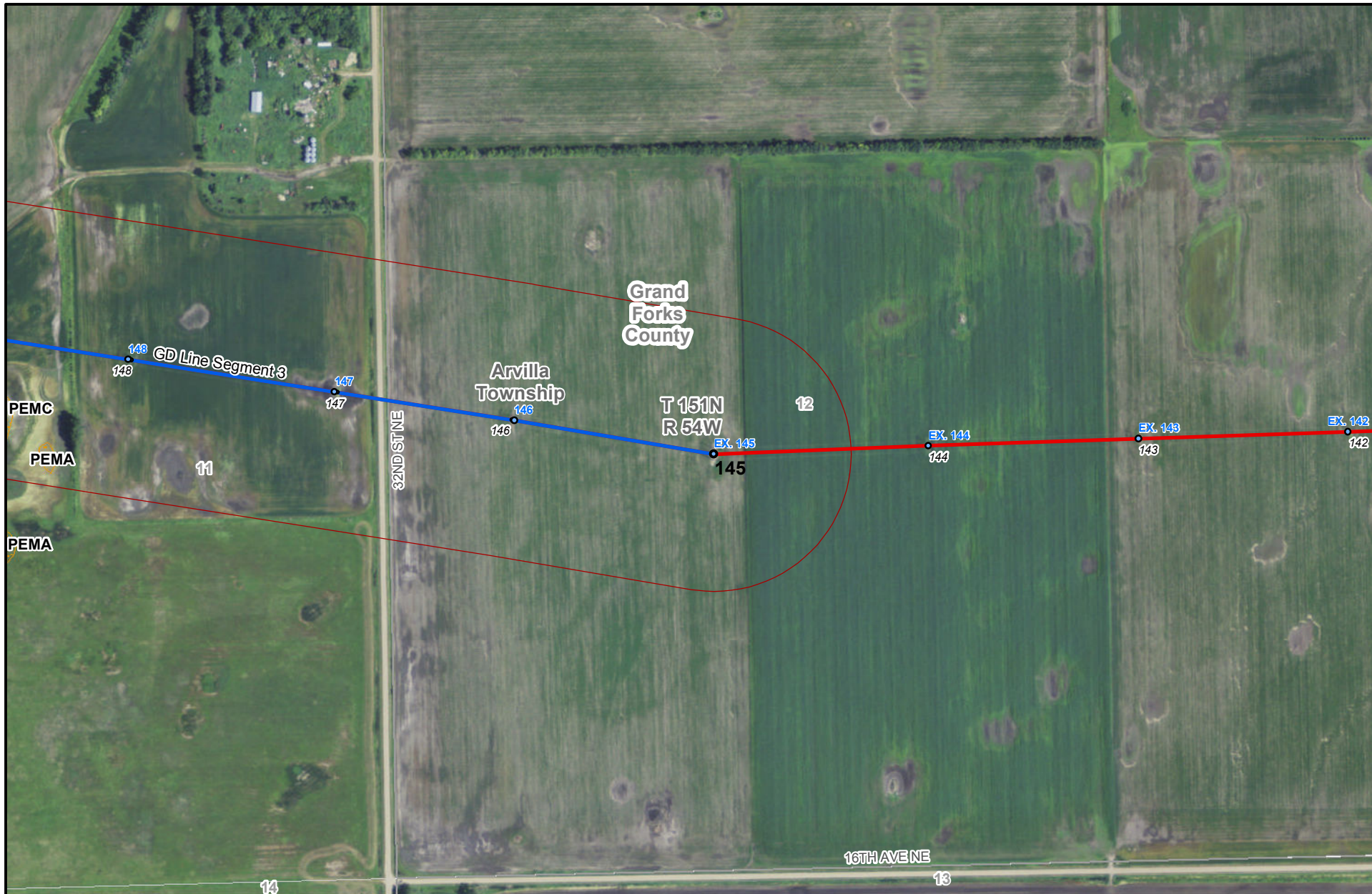


-  Transmission Substation
-  Storm Structures
-  Geographic Data from ND State GIS Departments & Great River Energy
Updated: 12/20/2011

-  GD 230-kV Line Segment 3
-  Existing Line

Great River Energy 230-KV "GD" Line
Figure 1





- | | | | |
|--|------------------------------|----------------|-----------------------------------|
| Transmission Substation | Proposed Structure | Accessory | Freshwater Emergent Wetland |
| Existing Storm Structure | GD 230-kV Line | Business | Freshwater Forested/Shrub Wetland |
| Existing Structure | Proposed Segment 3 Alignment | Farm Structure | Freshwater Pond |
| Geographic Data from ND State GIS Departments & Great River Energy Updated: 1/5/2012 | Existing Line | Government | Lake |
| | 500 foot buffer around line | Home | Riverine |

**Great River Energy
230-KV "GD" Line
Figure 2
Sheet 1**



GREAT RIVER ENERGY®

A Touchstone Energy® Cooperative





- Transmission Substation
- Existing Storm Structure
- Existing Structure
- Geographic Data from ND State GIS Departments & Great River Energy Updated: 1/5/2012
- Proposed Structure
- GD 230-kV Line
- Proposed Segment 3 Alignment
- Existing Line
- 500 foot buffer around line

- Accessory
- Business
- Farm Structure
- Government
- Home
- Freshwater Emergent Wetland
- Freshwater Forested/Shrub Wetland
- Freshwater Pond
- Lake
- Riverine

**Great River Energy
230-KV "GD" Line
Figure 2
Sheet 2**



GREAT RIVER ENERGY®

A Touchstone Energy® Cooperative



- Transmission Substation
- Existing Storm Structure
- Existing Structure
- Geographic Data from ND State GIS Departments & Great River Energy Updated: 1/5/2012
- Proposed Structure
- GD 230-kV Line
- Proposed Segment 3 Alignment
- Existing Line
- 500 foot buffer around line

- Accessory
- Business
- Farm Structure
- Government
- Home
- Freshwater Emergent Wetland
- Freshwater Forested/Shrub Wetland
- Freshwater Pond
- Lake
- Riverine

Great River Energy
230-KV "GD" Line
Figure 2
Sheet 3



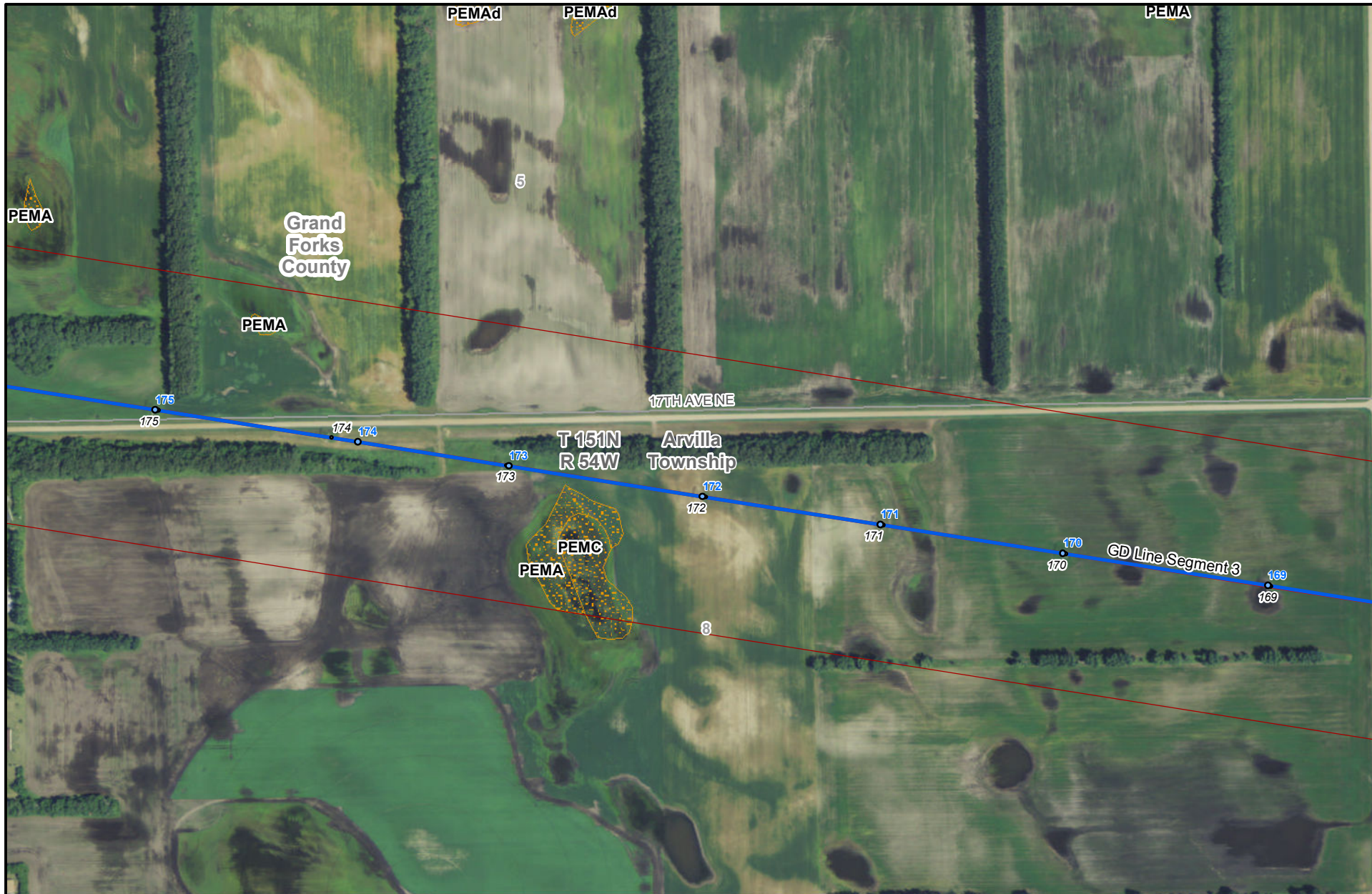


- Transmission Substation
- Existing Storm Structure
- Existing Structure
- N
- Proposed Segment 3 Alignment
- Existing Line
- 500 foot buffer around line
- Geographic Data from ND State GIS Departments & Great River Energy Updated: 1/5/2012

- Accessory
- Business
- Farm Structure
- Government
- Home
- Freshwater Emergent Wetland
- Freshwater Forested/Shrub Wetland
- Freshwater Pond
- Lake
- Riverine

Great River Energy
230-KV "GD" Line
Figure 2
Sheet 4





- | | | | |
|--|------------------------------|----------------|-----------------------------------|
| Transmission Substation | Proposed Structure | Accessory | Freshwater Emergent Wetland |
| Existing Storm Structure | GD 230-kV Line | Business | Freshwater Forested/Shrub Wetland |
| Existing Structure | Proposed Segment 3 Alignment | Farm Structure | Freshwater Pond |
| Geographic Data from ND State GIS Departments & Great River Energy Updated: 1/5/2012 | Existing Line | Government | Lake |
| 500 foot buffer around line | | Home | Riverine |

**Great River Energy
230-KV "GD" Line
Figure 2
Sheet 5**



GREAT RIVER ENERGY®



A Touchstone Energy® Cooperative



- Transmission Substation
- Existing Storm Structure
- Existing Structure
- N
- Proposed Segment 3 Alignment
- Existing Line
- 500 foot buffer around line
- Proposed Structure
- GD 230-kV Line
- Geographic Data from ND State GIS Departments & Great River Energy Updated: 1/5/2012

- Accessory
- Business
- Farm Structure
- Government
- Home
- Freshwater Emergent Wetland
- Freshwater Forested/Shrub Wetland
- Freshwater Pond
- Lake
- Riverine

Great River Energy
230-KV "GD" Line
Figure 2
Sheet 6



GREAT RIVER ENERGY®

A Touchstone Energy® Cooperative



- Transmission Substation
- Existing Storm Structure
- Existing Structure
- Geographic Data from ND State GIS Departments & Great River Energy Updated: 1/5/2012
- Proposed Structure
- GD 230-kV Line
- Proposed Segment 3 Alignment
- Existing Line
- 500 foot buffer around line

- Accessory
- Business
- Farm Structure
- Government
- Home
- Freshwater Emergent Wetland
- Freshwater Forested/Shrub Wetland
- Freshwater Pond
- Lake
- Riverine

Great River Energy
230-KV "GD" Line
Figure 2
Sheet 7



GREAT RIVER ENERGY®
 A Touchstone Energy® Cooperative





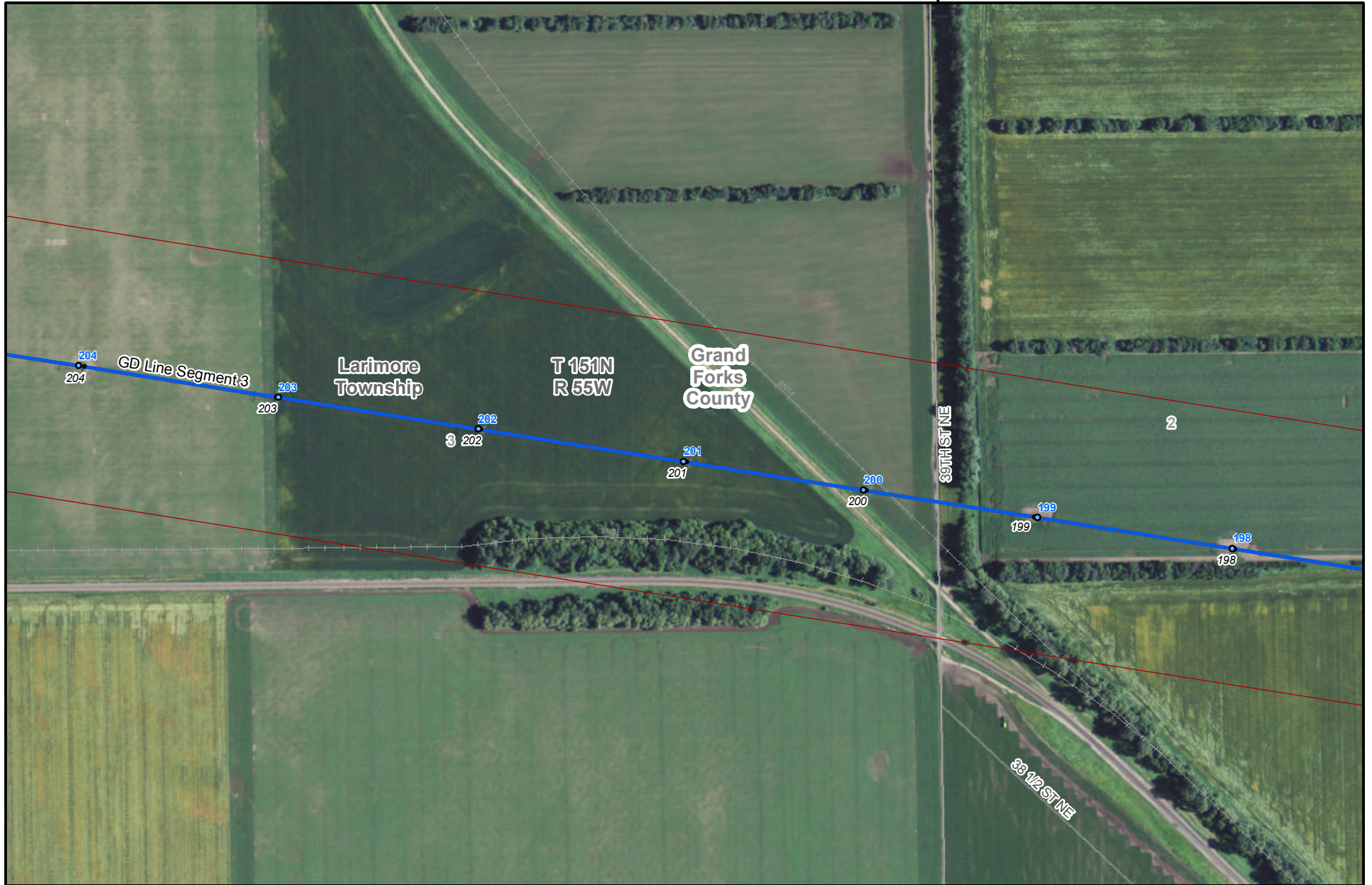
- Transmission Substation
- Existing Storm Structure
- Existing Structure
- Geographic Data from ND State GIS Departments & Great River Energy Updated: 1/5/2012
- Proposed Structure
- GD 230-kV Line
- Proposed Segment 3 Alignment
- Existing Line
- 500 foot buffer around line

- Accessory
- Business
- Farm Structure
- Government
- Home
- Freshwater Emergent Wetland
- Freshwater Forested/Shrub Wetland
- Freshwater Pond
- Lake
- Riverine

**Great River Energy
230-KV "GD" Line
Figure 2
Sheet 8**



97°40'0"W



- Transmission Substation
- Existing Storm Structure
- Existing Structure
- Geographic Data from ND State GIS Departments & Great River Energy Updated: 1/5/2012
- Proposed Structure
- GD 230-kV Line
- Proposed Segment 3 Alignment
- Existing Line
- 500 foot buffer around line

- Accessory
- Business
- Farm Structure
- Government
- Home
- Freshwater Emergent Wetland
- Freshwater Forested/Shrub Wetland
- Freshwater Pond
- Lake
- Riverine

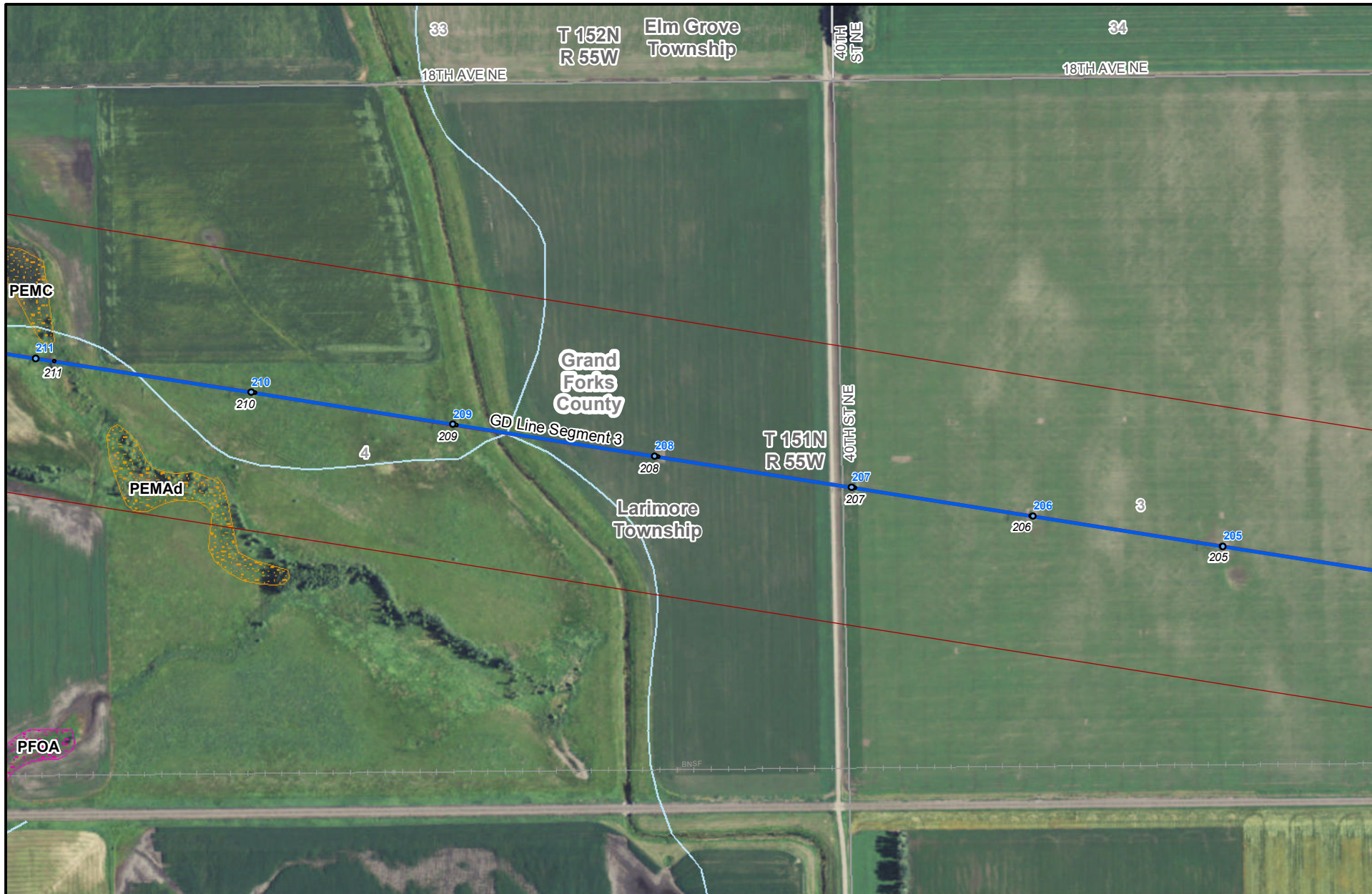
97°40'0"W

Great River Energy
230-KV "GD" Line
Figure 2
Sheet 9



GREAT RIVER ENERGY®
 A Touchstone Energy® Cooperative





- Transmission Substation
- Existing Storm Structure
- Existing Structure
- Geographic Data from ND State GIS Departments & Great River Energy Updated: 1/5/2012
- Proposed Structure
- GD 230-kV Line
- Proposed Segment 3 Alignment
- Existing Line
- 500 foot buffer around line

- Accessory
- Business
- Farm Structure
- Government
- Home
- Freshwater Emergent Wetland
- Freshwater Forested/Shrub Wetland
- Freshwater Pond
- Lake
- Riverine

Great River Energy
230-KV "GD" Line
Figure 2
Sheet 10



GREAT RIVER ENERGY
 A Touchstone Energy Cooperative



- ▲ Transmission Substation
- Existing Storm Structure
- Existing Structure
- N Geographic Data from ND State GIS Departments & Great River Energy Updated: 1/5/2012
- Proposed Structure
- GD 230-kV Line
- Proposed Segment 3 Alignment
- Existing Line
- 500 foot buffer around line

- Accessory
- Business
- Farm Structure
- Government
- Home
- Freshwater Emergent Wetland
- Freshwater Forested/Shrub Wetland
- Freshwater Pond
- Lake
- Riverine

Great River Energy
230-KV "GD" Line
Figure 2
Sheet 11



GREAT RIVER ENERGY®
 A Touchstone Energy® Cooperative



- Transmission Substation
- Existing Storm Structure
- Existing Structure
- Geographic Data from ND State GIS Departments & Great River Energy Updated: 1/5/2012
- Proposed Segment 3 Alignment
- Existing Line
- 500 foot buffer around line
- Accessory
- Business
- Farm Structure
- Government
- Home
- Freshwater Emergent Wetland
- Freshwater Forested/Shrub Wetland
- Freshwater Pond
- Lake
- Riverine

Great River Energy
230-KV "GD" Line
Figure 2
Sheet 12



GREAT RIVER ENERGY
 A Touchstone Energy Cooperative





- ▲ Transmission Substation
- Existing Storm Structure
- Existing Structure
- N Geographic Data from ND State GIS Departments & Great River Energy Updated: 1/5/2012
- Proposed Structure
- GD 230-kV Line
- Proposed Segment 3 Alignment
- Existing Line
- 500 foot buffer around line

- Accessory
- Business
- Farm Structure
- Government
- Home
- Freshwater Emergent Wetland
- Freshwater Forested/Shrub Wetland
- Freshwater Pond
- Lake
- Riverine

Great River Energy
230-KV "GD" Line
Figure 2
Sheet 13



GREAT RIVER ENERGY®
 A Touchstone Energy® Cooperative



CERTIFICATION OF APPLICANT PURSUANT TO N.D. CENTURY CODE 49-22-03(3)(a)(3)

GREAT RIVER ENERGY

PSC Case No. PU-11-640

I, William R. Kaul, Vice President, a duly authorized agent of Great River Energy that has authority to bind the company in these matters, do hereby certify under oath:

1. That the rebuild activities in Segment 3 of Great River Energy's "GD Line" will not affect any known exclusion or avoidance area as defined under the N.D. Administration Code 69-06-08-02 (1) and (2).
2. That Great River Energy will comply with all applicable conditions and protections in applicable North Dakota siting laws and rules and commission orders previously issued for any part of the facility.

Dated at Maple Grove, Minnesota this 1 day of February, 2012.

Wm. R. Kaul

William R. Kaul
Vice President
Transmission Division

This instrument was acknowledged before me this 1st day of February, 2012, by William R. Kaul on behalf of Great River Energy.

Sign: Theresa M Hoaglund
Print: Theresa M Hoaglund
My Commission Expires: January 31, 2015

