

Enbridge Pipelines Inc.
3000 Fifth Avenue Place
425 – 1st Street S.W.
Calgary, AB T2P 3L8
Canada

Shauna Bates
Director, Regulatory, Planning and Analysis
Phone: (403) 231 3963
Fax: (403) 508 3140
shauna.bates@enbridge.com



ENBRIDGE PIPELINES (NORTH DAKOTA) LLC

March 1, 2012

RECEIVED

Oil Pipeline Tariff Filing

MAR 02 2012

PUBLIC SERVICE COMMISSION

North Dakota Public Service Commission
State Capital – 12th Floor
Bismark, ND 58505 - 0480
Attn: Public Utility Division

Tariff Department:

Enclosed for filing with the North Dakota Public Service Commission (NDPSC) are seven copies of the following tariff issued by Enbridge Pipelines (North Dakota) LLC ("Enbridge North Dakota"):

NDPSC Tariff No. 90, cancelling NDPSC Tariff No. 89

The tariff bears an issuance date of March 1, 2012 and an effective date of April 1, 2012.

Explanation of the Tariff Filing

NDPSC Tariff No. 90 lifts the temporary, partial embargo that has been in place since October 28, 2011, establishes an initial rate for a gathering service at Alexander, and incorporates an updated calculation of the surcharges on the two previously approved expansions (Phase 5 and Phase 6) on the Enbridge North Dakota pipeline. These expansions are cost-of-service based surcharges that are trued up each year to actual costs and are not subject to the FERC indexing methodology. The two projects plus the other changes to the tariff are described below.

Phase 5 Expansion Project:

In August 2006, Enbridge North Dakota submitted an Offer of Settlement to the Commission for a two part expansion (Phase 5) of capacity on the pipeline system. The offer comprised of an expansion to the mainline and the looping of a feeder line between Alexander, ND and Beaver Lodge, ND. The offer was approved by the Commission on October 31, 2006 (FERC Docket No. OR06-9-000). The Mainline Expansion added approximately 30,000 barrels per day (bpd) of

capacity and the Looping Expansion increased volumes from Alexander and Trenton by approximately 25,000 and 33,000 bpd, respectively. The surcharges for both portions of the expansion were to be applicable for the five years immediately following the in-service date of the Phase 5 Expansion, which was January 1, 2008.

On January 29, 2010 Enbridge North Dakota filed a Motion to Approve Modification of Previously Approved Offer of Settlement (Motion). In the Motion Enbridge North Dakota proposed that it be allowed to extend the term of the Looping Surcharge by four years, ending on December 31, 2016 rather than the original date of December 31, 2012. The effect of the proposed extended term reduced the Looping Surcharge substantially, thereby moderating the rate impact on shippers. The Motion was approved by Commission Letter Order, 130 FERC ¶ 61,231, issued March 23, 2010 in FERC Docket No. OR10-9-000. The Mainline Surcharge will expire on December 31, 2012 as originally filed.

Phase 6 Expansion Project:

In January 2008, Enbridge North Dakota filed an Offer of Settlement seeking Commission approval of a mechanism to recover the costs of the planned Phase 6 Expansion of capacity on the pipeline system. The offer was approved by the Commission on October 20, 2008 (FERC Docket No. OR08-6-000). The Phase 6 Expansion added approximately 40,000 barrels per day (bpd) of capacity into Minot, ND from the western end of the pipeline system and approximately 51,000 bpd of capacity from Minot to the eastern end of the system at Clearbrook, MN. The surcharge was added to the existing Enbridge North Dakota base rates and other previously-approved surcharges for a period of seven years.

Also included as part of this filing is Appendix A, which contains the estimated revenue requirement for 2012, based on the cost-of-service methodology set forth in the Phase 5 and Phase 6 Offers of Settlement. The estimated revenue requirement for each surcharge is divided by an estimate of total post-expansion volumes to provide the per barrel surcharges for 2012. As illustrated in the supporting worksheets, the Phase 5 and Phase 6 Mainline Surcharges have been applied to all routes with a destination to Clearbrook, MN and the International Boundary. The Phase 5 Looping Surcharge has been applied to all routes originating at Trenton and Alexander, ND.

Initial Rate:

In addition to updating the surcharges, NDPSC Tariff No. 90 establishes an initial rate for a gathering service at Alexander (McKenzie County), ND from Saddle Butte Pipeline, LLC (Saddle Butte) in Tables 1, 2 and 3. The rate at Alexander resulted from a request for a pipeline

connection from Saddle Butte to facilitate receipts into the Enbridge North Dakota system. Only shippers utilizing this new interconnected service will be subject to the applicable charge. Pursuant to 18 CFR 342.2(b), attached to this filing is the affidavit of Feisal Gazie attesting that the initial rate established in NDPSC Tariff No. 90 has been agreed to by at least one non-affiliated shipper who intends to use the service.

Partial, Temporary Embargo:

Finally, NDPSC Tariff No. 90 lifts the partial, temporary embargo that has been in place since October 28, 2011. Movements between the receipt point at Berthold, ND and the delivery point at Clearbrook, MN will once again be allowed on April 1, 2012.

Notification

I hereby certify that Enbridge North Dakota has, on or before this date, delivered copies of the above tariff to each person on Enbridge North Dakota's tariff subscriber list by U.S. postal service (First Class Mail) or by other means agreed upon.

Pursuant to 18 CFR 343.3 of the Commission's regulations, it is requested that any protest related to this tariff filing be sent via facsimile to Shauna Bates at (403) 508-3140.

If you have any questions concerning this filing, please call Kristine Edwards at (403) 718-3450.

Sincerely,

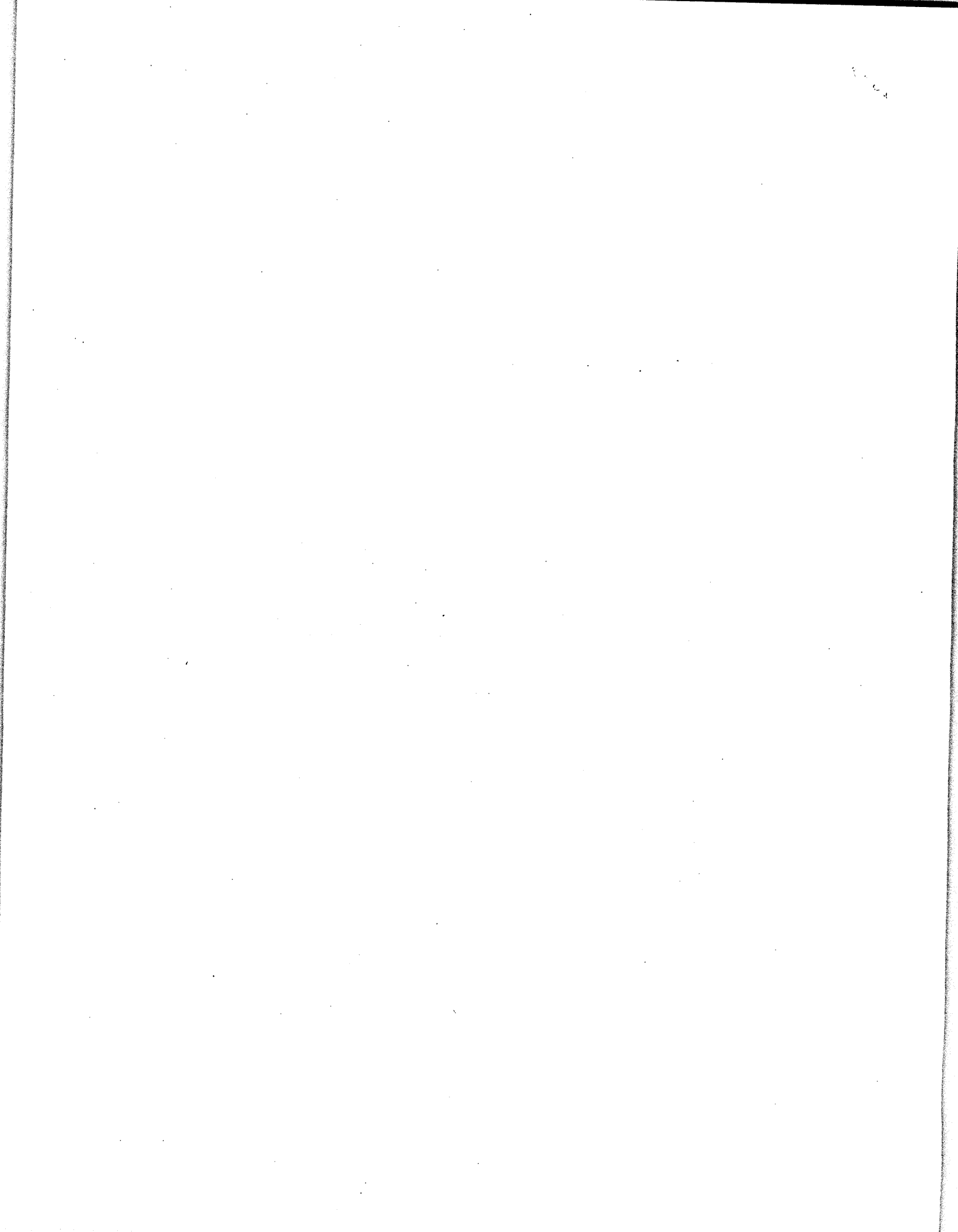


Shauna Bates

Director, Regulatory, Planning and Analysis

Enclosures

cc: Enbridge Pipelines (North Dakota) Tariff Subscribers





**[C] NOTICE OF TEMPORARY PARTIAL EMBARGO
ENBRIDGE PIPELINES (NORTH DAKOTA) LLC
LOCAL PROPORTIONAL TARIFF
RATES APPLYING ON THE TRANSPORTATION OF
CRUDE PETROLEUM
FROM POINTS IN
MONTANA AND NORTH DAKOTA
TO POINTS IN
MINNESOTA, MONTANA AND NORTH DAKOTA**

Governed by rules and regulations published in Enbridge Pipelines (North Dakota) LLC, FERC No. 71.9.0, or successive issues thereof.

~~[C] FERC No. 72.17.0 is being issued to provide notice of an extension of the temporary, partial embargo on movements between the receipt point at Berthold (Ward County, ND) and the delivery point at Clearbrook (Clearwater County, MN). Vibration issues at Berthold resulted in the isolation of pumps to ensure that safe operations could be maintained. New pumps have now been installed and are awaiting commissioning which is expected to be completed by the end of March 2012. Therefore, EPND has extended the temporary partial embargo until April 1, 2012, unless earlier notice is provided.~~

~~[N] Issued pursuant to the FERC Letter Order dated October 31, 2006 in Docket No. OR06-9-000, the FERC Letter Order dated October 20, 2008 in Docket No. OR08-6-000, and the FERC Letter Order dated March 23, 2010 in Docket No. OR10-9-000.~~

~~[N] Filed in Compliance with 18 C.F.R. 342.2(b), FERC Tariff No. 72.18.0 establishes an initial rate for a gathering service at Alexander (McKenzie County), North Dakota from Saddle Butte Pipeline, LLC.~~

~~[C] Issued on less than one day's notice under authority of 18 C.F.R. 341.14. This tariff publication is conditionally accepted subject to refund pending a 30 day review period.~~

This tariff also applies on North Dakota intrastate traffic.

The rates named in this tariff are expressed in cents per barrel of forty-two (42) United States gallons for pipeline gathering and transportation, subject to change as provided by law.

The provisions published herein will, if effective, not result in an effect on the quality of the human environment.

ISSUED: March 1, 2012

EFFECTIVE: April 1, 2012

ISSUED BY:
Shauna Bates
Director, Regulatory, Planning and Analysis
Enbridge Pipelines Inc.
3000 Fifth Avenue Place
425, 1st Street SW
Calgary, AB Canada T2P 3L8

COMPILED BY:
Kristine Edwards
Regulatory Strategy and Compliance
Enbridge Pipelines Inc.
Tel. (403) 718-3450
Fax: (403) 508-3140

E-mail: Enbridge-Tariffs@enbridge.com

[U] All rates contained within the following table are unchanged unless otherwise noted.

TABLE 1 – TRUNK LINE RATES TO CLEARBROOK / INT. BOUNDARY (CENTS PER BARREL)					[C] Subject to Embargo
LIST OF ORIGINS TANKING GROUPS 1,2,3,5,6 OR 7 BASIS OF RATES					
Route No.	Group	FROM	TO	RATE	
		Enbridge Pipelines (North Dakota) LLC	Enbridge Pipelines (North Dakota) LLC		
1	Group 1 (See Item 26)	Glenburn (Renville County), ND	Clearbrook, Clearwater County, MN	[D] 114.72	[C]-No
		Minot (Ward County), ND			[C]-No
		Newburg (Bottineau County), ND			[C]-No
		Sherwood (Renville County), ND			[C]-No
		Berthold (Ward County), ND	Clearbrook, Clearwater County, MN		[C]-YES
		Berthold (Ward County), ND	Int. Boundary near Portal (Burke County), ND		[C]-No
		Stanley (Mountrail County), ND	Clearbrook, Clearwater County, MN or Int. Boundary near Portal (Burke County), ND		[C]-No
	Group 2 (See Item 26)	Grenora (Williams County), ND	Clearbrook, Clearwater County, MN or Int. Boundary near Portal (Burke County), ND	[D] 128.10	[C]-No
	Group 3 (See Item 26)	Flat Lake (Sheridan County), MT		[D] 131.06	[C]-No
		Reserve (Sheridan County), MT		[C]-No	
	Group 5 (See Item 26)	Tioga (Ramberg/Beaver Lodge Station), (Williams County), ND		[D] 117.66	[C]-No
	Group 6 (See Item 26)	Trenton (Williams County), ND		[D] 178.57	[C]-No
Group 7 (See Item 26)	Alexander (McKenzie County), ND	[D] 183.00	[C]-No		
<p>For gathering into or truck unloading at Stanley (Mountrail County), North Dakota a charge of 20.00 cents per barrel will be assessed.</p> <p>For gathering into or truck unloading at Berthold (Ward County), North Dakota a charge of 20.00 cents per barrel will be assessed.</p> <p>For gathering into Tioga (Ramberg/Beaver Lodge Station), North Dakota from Enserco Midstream LLC a charge of 10.00 cents per barrel will be assessed.</p> <p>For gathering into Tioga (Ramberg/Beaver Lodge Station), North Dakota from Banner Transportation Company LLC a charge of 10.00 cents per barrel will be assessed.</p> <p>For gathering into Trenton (Williams County), North Dakota from Brigham Oil & Gas, L.P. a charge of 10.00 cents per barrel will be assessed.</p> <p>[N] For gathering into Alexander (McKenzie County), North Dakota from Saddle Butte Pipeline, LLC a charge of 10.00 cents per barrel will be assessed.</p> <p>(See Item 26).</p>					
Route 1 - Route via Enbridge Pipelines (North Dakota) LLC					

[U] All rates contained within the following table are unchanged unless otherwise noted.

TABLE 2 – TRUNK LINE RATES TO TIOGA (CENTS PER BARREL)				[C] Subject to Embargo
Route No.	FROM	TO	RATE	
	Enbridge Pipelines (North Dakota) LLC	Tesoro High Plains Pipeline Company		
1	Reserve (Sheridan County), MT (See Item 26)	Tioga (Ramberg/Beaver Lodge Stations), (Williams County), ND	65.41	[C]-No
	Trenton (Williams County), ND (See Item 26)		[D] 90.60	[C]-No
	Alexander (McKenzie County), ND (See Item 26)		[D] 95.02	[C]-No
<p>For gathering into or truck unloading at Tioga (Ramberg/Beaver Lodge Station), North Dakota for delivery to Tesoro High Plains Pipeline Company, a charge of 8.94 cents per barrel will be assessed.</p> <p>For gathering into Trenton (Williams County), North Dakota from Brigham Oil & Gas, L.P. a charge of 10.00 cents per barrel will be assessed.</p> <p><u>[N] For gathering into Alexander (McKenzie County), North Dakota from Saddle Butte Pipeline, LLC a charge of 10.00 cents per barrel will be assessed.</u></p> <p>(See Item 26)</p>				
Route 1 - Route via Enbridge Pipelines (North Dakota) LLC.				

[U] All rates contained within the following table are unchanged unless otherwise noted.

TABLE 3 – TRUNK LINE RATES TO STANLEY (CENTS PER BARREL)				[C] Subject to Embargo
Route No.	FROM	TO	RATE	
	Enbridge Pipelines (North Dakota) LLC	Hawthorn Oil Transportation (North Dakota), Inc.		
1	Stanley (Mountrail County), ND (pump-over) (See Item 26)	Stanley (Mountrail County), ND	25.00	[C]-No
	Tioga (Ramberg/Beaver Lodge Station), (Williams County), ND (See Item 26)		94.11	[C]-No
	Grenora (Williams County), ND (See Item 26)		104.55	[C]-No
	Reserve (Sheridan County), MT (See Item 26)		107.51	[C]-No
	Trenton (Williams County), ND (See Item 26)		[D] 155.02	[C]-No
	Alexander (McKenzie County), ND (See Item 26)		[D] 159.45	[C]-No
<p>For gathering into or truck unloading at Stanley (Mountrail County), North Dakota a charge of 20.00 cents per barrel will be assessed.</p> <p>For gathering into Tioga (Ramberg/Beaver Lodge Station), North Dakota from Enserco Midstream LLC a charge of 10.00 cents per barrel will be assessed.</p> <p>For gathering into Tioga (Ramberg/Beaver Lodge Station), North Dakota from Banner Transportation Company LLC a charge of 10.00 cents per barrel will be assessed.</p> <p>For gathering into Trenton (Williams County), North Dakota from Brigham Oil & Gas, L.P. a charge of 10.00 cents per barrel will be assessed.</p> <p><u>[N] For gathering into Alexander (McKenzie County), North Dakota from Saddle Butte Pipeline, LLC a charge of 10.00 cents per barrel will be assessed.</u></p> <p>(See Item 26)</p>				
Route 1 - Route via Enbridge Pipelines (North Dakota) LLC.				

[U] All rates contained within the following table are unchanged.

TABLE 4 – GATHERING RATES (CENTS PER BARREL)			[C] Subject to Embargo
FROM	TO	RATE	
Newburg Area, ND	Newburg (Bottineau County), ND	75.81	[C]-No
Flat Lake Area, MT	Flat Lake (Sheridan County), MT	75.81	[C]-No

Symbols:

[N] – New

[D] – Decrease

[U] – Unchanged rate

[W] – Change in wording only

[C] – Cancel