

Exam Date:03/21/2013

Embden Grain Co.
 4215 145 Ave SE
 Embden , ND
 County:
 Phone: 701-633-5438
 CCC Number:

Page: 1

Examiner: 1

Location/Container Numbers/Comments	Section	Capacity
PART A - ADDITIONAL SPACE TO BE INCLUDED UNDER LICENSE		
<NO BINS ADDED>		
		Total: 0
PART B - SPACE TO BE DELETED UNDER LICENSE		
<NO BINS DELETED>		
		Total: 0
PART C - ALL SPACE TO BE INCLUDED UNDER LICENSE		
	A	301,000
	B	432,000
		Total: 733,000
PART D - TOTAL CAPACITY BY FUNCTIONAL UNIT		
Embden 84	A B	733,000
		Total: 733,000

Exam Date:03/21/2013

Embden Grain Co.
4215 145 Ave SE
Embden , ND
County:

Page: 1

Examiner: 1

Status	Section	Bin Number	Bin Type	Base Point	Diameter or Bu/Ft (Irreg).		Side wall	Add for Hopper	Ded. for Obst.	Effective Depth	Add for Peak	Depth for Capac.	Bushels per Foot	Base Pack%	Bushel Capacity with Pack
					Length	Width									

Facility: Embden

Section: A

A	002	Square	floor over bins	0.000	8.800	5.500	30.00	0.00	0.00	30.000	0.000	30.0	38.9	3.00	1,202
A	003	Square	floor over bins	0.000	8.800	10.00	41.00	0.00	0.00	41.000	0.000	41.0	70.7	5.20	3,050
A	004	Square	floor over bins	0.000	8.800	5.500	26.00	0.00	0.00	26.000	0.000	26.0	38.9	3.00	1,041
A	005	Square	floor over bins	0.000	8.800	10.00	41.00	0.00	0.00	41.000	0.000	41.0	70.7	5.20	3,050
A	006	Square	floor over bins	0.000	8.800	10.00	41.00	0.00	0.00	41.000	0.000	41.0	70.7	5.20	3,050
A	008	Square	floor over bins	0.000	8.800	5.500	26.00	0.00	0.00	26.000	0.000	26.0	38.9	3.00	1,041
A	009	Square	floor over bins	0.000	8.800	5.500	26.00	0.00	0.00	26.000	0.000	26.0	38.9	3.00	1,041
A	010	Square	floor over bins	0.000	8.800	10.00	41.00	0.00	0.00	41.000	0.000	41.0	70.7	5.20	3,050
A	011	Square	floor over bins	0.000	8.800	10.00	41.00	0.00	0.00	41.000	0.000	41.0	70.7	5.20	3,050
A	013	Square	floor over bins	0.000	8.800	5.500	26.00	0.00	0.00	26.000	0.000	26.0	38.9	3.00	1,041
A	014	Square	floor over bins	0.000	8.800	10.00	41.00	0.00	0.00	41.000	0.000	41.0	70.7	5.20	3,050
A	101	Peaked	eaves	30.000	0.000	0.000	66.00	0.00	0.00	66.000	1.800	67.8	568.2	9.00	41,991
A	102	Peaked	eaves	42.000	0.000	0.000	32.20	0.00	0.00	32.200	2.500	34.7	1113.7	10.0	42,510
A	103	Peaked	eaves	59.500	0.000	0.000	65.00	0.00	0.00	65.000	4.200	69.2	2235.1	10.0	170,136
A	213	Peaked	eaves	36.000	0.000	0.000	22.70	0.00	0.00	22.700	2.200	24.9	818.2	10.0	22,410

Bin count: 15

Facility: Embden Section: A Total: 300,713To Even: 301,000

Exam Date:03/21/2013

Embden Grain Co.
4215 145 Ave SE
Embden , ND
County:

Page: 2

Examiner: 1

Status	Section	Bin Number	Bin Type	Base Point	Diameter or Bu/Ft (Irreg.)		Side wall	Add for Hopper	Ded. for Obst.	Effective Depth	Add for Peak	Depth for Capac.	Bushels per Foot	Base Pack%	Bushel Capacity with Pack
					Length	Width									

Facility: Embden

Section: B

B	001	Peaked	eaves		27.000	0.000	0.000	22.20	0.00	0.00	22.200	1.600	23.8	460.3	8.50	11,886
B	002	Peaked	eaves		27.000	0.000	0.000	22.20	0.00	0.00	22.200	1.600	23.8	460.3	8.50	11,886
B	003	Peaked	eaves		27.000	0.000	0.000	22.20	0.00	0.00	22.200	1.600	23.8	460.3	8.50	11,886
B	004	Peaked	eaves		27.000	0.000	0.000	22.20	0.00	0.00	22.200	1.600	23.8	460.3	8.50	11,886
B	005	Peaked	eaves		27.000	0.000	0.000	22.20	0.00	0.00	22.200	1.600	23.8	460.3	8.50	11,886
B	006	Peaked	eaves		21.000	0.000	0.000	16.00	0.00	0.00	16.000	1.300	17.3	278.4	6.80	5,143
B	007	Peaked	eaves		21.000	0.000	0.000	16.00	0.00	0.00	16.000	1.300	17.3	278.4	6.80	5,143
B	008	Peaked	eaves		21.000	0.000	0.000	16.00	0.00	0.00	16.000	1.300	17.3	278.4	6.80	5,143
B	009	Peaked	eaves		21.000	0.000	0.000	16.00	0.00	0.00	16.000	1.300	17.3	278.4	6.80	5,143
B	010	Peaked	eaves		21.000	0.000	0.000	16.00	0.00	0.00	16.000	1.300	17.3	278.4	6.80	5,143
B	011	Peaked	eaves		21.000	0.000	0.000	16.00	0.00	0.00	16.000	1.300	17.3	278.4	6.80	5,143
B	012	Peaked	eaves		21.000	0.000	0.000	16.00	0.00	0.00	16.000	1.300	17.3	278.4	6.80	5,143
B	013	Peaked	eaves		21.000	0.000	0.000	16.00	0.00	0.00	16.000	1.300	17.3	278.4	6.80	5,143
B	014	Peaked	eaves		21.000	0.000	0.000	16.00	0.00	0.00	16.000	1.300	17.3	278.4	6.80	5,143
B	015	Peaked	eaves		21.000	0.000	0.000	15.40	2.20	0.00	17.600	1.300	18.9	278.4	6.80	5,620
B	016	Peaked	eaves		21.000	0.000	0.000	15.40	2.20	0.00	17.600	1.300	18.9	278.4	6.80	5,620
B	017	Peaked	eaves		21.000	0.000	0.000	15.40	2.20	0.00	17.600	1.300	18.9	278.4	6.80	5,620
B	018	Peaked	eaves		14.900	0.000	0.000	20.80	0.00	0.00	20.800	0.900	21.7	140.2	5.50	3,209
B	019	Peaked	eaves		42.000	0.000	0.000	32.10	0.00	0.00	32.100	2.500	34.6	1113.7	10.0	42,387
B	020	Peaked	eaves		42.000	0.000	0.000	33.30	0.00	0.00	33.300	2.500	35.8	1113.7	10.0	43,857
B	021	Peaked	eaves		42.000	0.000	0.000	33.30	0.00	0.00	33.300	2.500	35.8	1113.7	10.0	43,857

Exam Date:03/21/2013

Embden Grain Co.
4215 145 Ave SE
Embden , ND
County:

Examiner: 1

Status	Section	Bin Number	Bin Type	Base Point	Diameter or Bu/Ft (Irreg).		Side wall	Add for Hopper	Ded. for Obst.	Effective Depth	Add for Peak	Depth for Capac.	Bushels per Foot	Base Pack%	Bushel Capacity with Pack
					Length	Width									

Facility: Embden

Section: B

B	022	Peaked	eaves		42.000	0.000	0.000	33.30	0.00	0.00	33.300	2.500	35.8	1113.7	10.0	43,857
B	023	Peaked	eaves		42.000	0.000	0.000	33.30	0.00	0.00	33.300	2.500	35.8	1113.7	10.0	43,857
B	024	Peaked	eaves		42.000	0.000	0.000	33.30	0.00	0.00	33.300	2.500	35.8	1113.7	10.0	43,857
B	025	Peaked	eaves		42.000	0.000	0.000	33.30	0.00	0.00	33.300	2.500	35.8	1113.7	10.0	43,857

Bin count: 25

Facility: Embden Section: B Total: **431,315**

To Even: **432,000**

Overall Licensed Bin Capacity for:

Embden Grain Co.

Bin count: 40

Licensed Capacity:
(includes pack)

732,028 Bu.

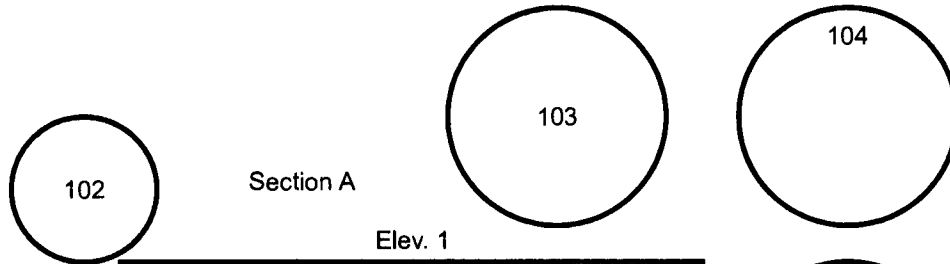
Licensed Capacity (to even):
(includes pack and section totals are
rounded up to next highest 1000)

733,000 Bu.



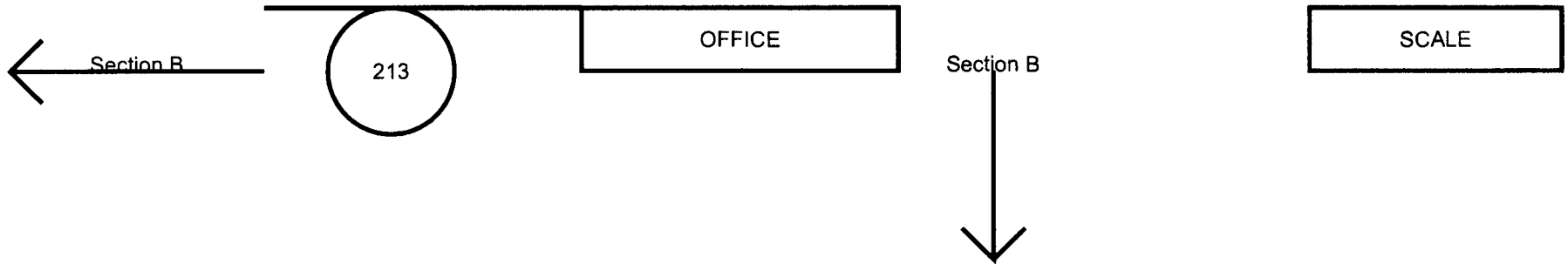
EMBDEN GRAIN Co.
EMBDEN ND.
Corporation #277
Section A

RRV&W RAIL



6	8	9	10
5	4	13	11
3	2	x m x l	14

DRIVEWAY & SCALE





EMBDEN GRAIN Co.
EMBDEN ND.
Corporation #277

RRV&W RAIL

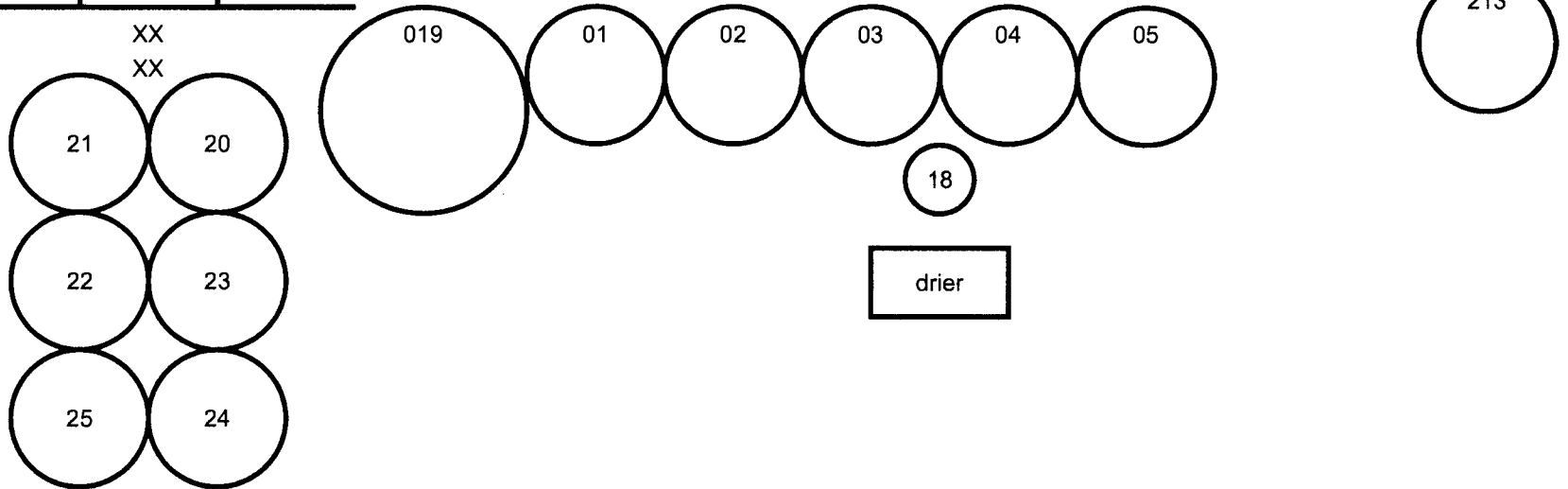
Section B

PIT

XX
XX

Section B

Section A



Section B

