



GREAT RIVER
ENERGY®

12300 Elm Creek Boulevard • Maple Grove, Minnesota 55369-4718 • 763-445-5000 • Fax 763-445-5050 • www.GreatRiverEnergy.com

November 9, 2012

Mr. Darrell Nitschke, Executive Director
North Dakota Public Service Commission
600 E. Boulevard, Dept 408
Bismarck, ND 58505-0480

**RE: Amendment to Great River Energy Application of August 31, 2012 for
Transmission Facility Certificate of Corridor Compatibility and Route Permit
Prairie Substation to Ramsey Substation 230 kV "GD" Transmission Line
Docket # PU-12-398**

Dear Mr. Nitschke:

On August 31, 2012, Great River Energy submitted a Transmission Facility Corridor Compatibility and Route Permit Application for approximately four miles (two relocated segments) of the 230 kV "GD" Transmission Line. The relocation of the segments is necessary to mitigate clearance discrepancies created from increased water elevations in the area.

During the period since the Application submittal in August, Great River Energy has been working with landowners and agencies to further avoid/minimize impacts to prime agricultural lands and wetlands. These discussions have resulted in the relocation of some of the transmission line structures. As such, the following information is intended to replace the portions of the August 31, 2012 Application that were modified by the structure relocations.

Figures 4-1 and 4-2 (attached) have been amended to represent the updated reroute right-of-way and pole structure locations. The adjustments to the Crary site reroute occurred on the north and eastern sides to avoid prime agricultural land and US Fish and Wildlife Service (USFWS) easement wetlands. The adjustments to the Lakota site reroute occurred as a result of Great River Energy working with landowners and Agency staff to further avoid impacts to prime agriculture land and USFWS easement wetlands.

The impact table (Table 5-1 in the Application) has been modified due to the changes made to the reroute segments. Amended Table 5-1 below provides an updated (11/1/2012) summary of the temporary and permanent impacts for the Project Reroutes.

27 PU-12-398 Filed 11/20/2012 Pages: 5
Exhibit 3
Great River Energy

**Amended Table 5-1 Project Route Summary Table
 (Amended from original August 31, 2012 submittal)**

Impact	Route	
	Reroute Segment 7 (Jones Lake / Lakota)	Reroute Segment 8 (Crary)
Total Length (miles)	1.41 miles	1.81 miles
Total ROW (acres)	26.08 Acres	33.40 Acres
Approximate Number of Structures	11	14
Temporary Structure Impacts (acres)	8.47	10.09
Temporary Access Road Impact (acres)	3.43	4.40
Total Temporary Impacts (acres)	11.9	14.49
Percent of ROW – Temporary Impact	45.62%	43.38%
Permanent Structure Impacts (acres)	0.010 Ac (442 sq. ft.)	0.013 Ac (442 sq. ft.)
Permanent Road Impacts	0.00	0.51 Acres
Total Permanent Impacts (acres)	0.010 Ac	0.523 Ac
Percent of ROW – Permanent Impact	0.038%	1.56%

Updated impact calculations for this Project were completed using the ArcInfo license of ESRITM ArcMap™ 10.0, using UTM NAD 83 projection. The following assumptions were used to estimate resource impacts on land cover, vegetation, soils, prime farmland, wetlands, floodplains, and managed resource areas based on the preliminary structure locations:

- The ROW is 150 feet wide.
- Permanent structure impacts were estimated to be a 2.5-foot radius around each pole for the straight structures and a 3-foot radius around each pole for the dead end structures, to account for additional guy wires needed for stability. Each structure consists of two poles (H-Frame, see Section 4.2 of originally submitted application).
- Temporary structure impacts were estimated to be a 100-foot radius from the centerline of each structure.
- The one permanent access and maintenance road impacts were estimated by calculating a 25-foot wide roadway, with 4:1 slopes. Depending on the topography at the specific access roadway, the width varied between 50 and 75 feet.
- The temporary roadway impacts were calculated by estimating a 20-foot access road within the centerline of the ROW.

The impacts to agricultural production land will also change due to the relocation of the proposed reroute and the acceptable setback distances for farming operations near the structures. The first paragraph of Section 5.8.2. **Impacts** is amended as follows:

Mr. Darrell Nitschke
November 9, 2012
Page 3

Impacts to agricultural production will include a minor loss of land available for cultivation, due to the placement of the new power poles. Temporary impacts will occur during construction; however, construction activities are anticipated for the winter months so no yield loss will occur. Permanent agriculture loss is expected from the construction footprint of the new reroutes. Structures without anchors will permanently remove 183.75 ft² of land from cultivation, and structures with anchors will permanently remove 15,393 ft² from cultivation. This will result in permanent agriculture loss of approximately 1.23 acres in the proposed Segment 7 reroute and approximately 1.37 acres in the proposed Segment 8 reroute.

The information in the paragraph above reflects a significant decrease in the amount of land permanently removed from cultivation than originally anticipated. The other information contained in the August 31, 2012 submittal; including impacts to the environment, economy, human health and welfare, remains unchanged and no additional amendments are anticipated. Please call me if you have any questions regarding these amendments to the August 31, 2012 Application.

Respectfully Submitted,

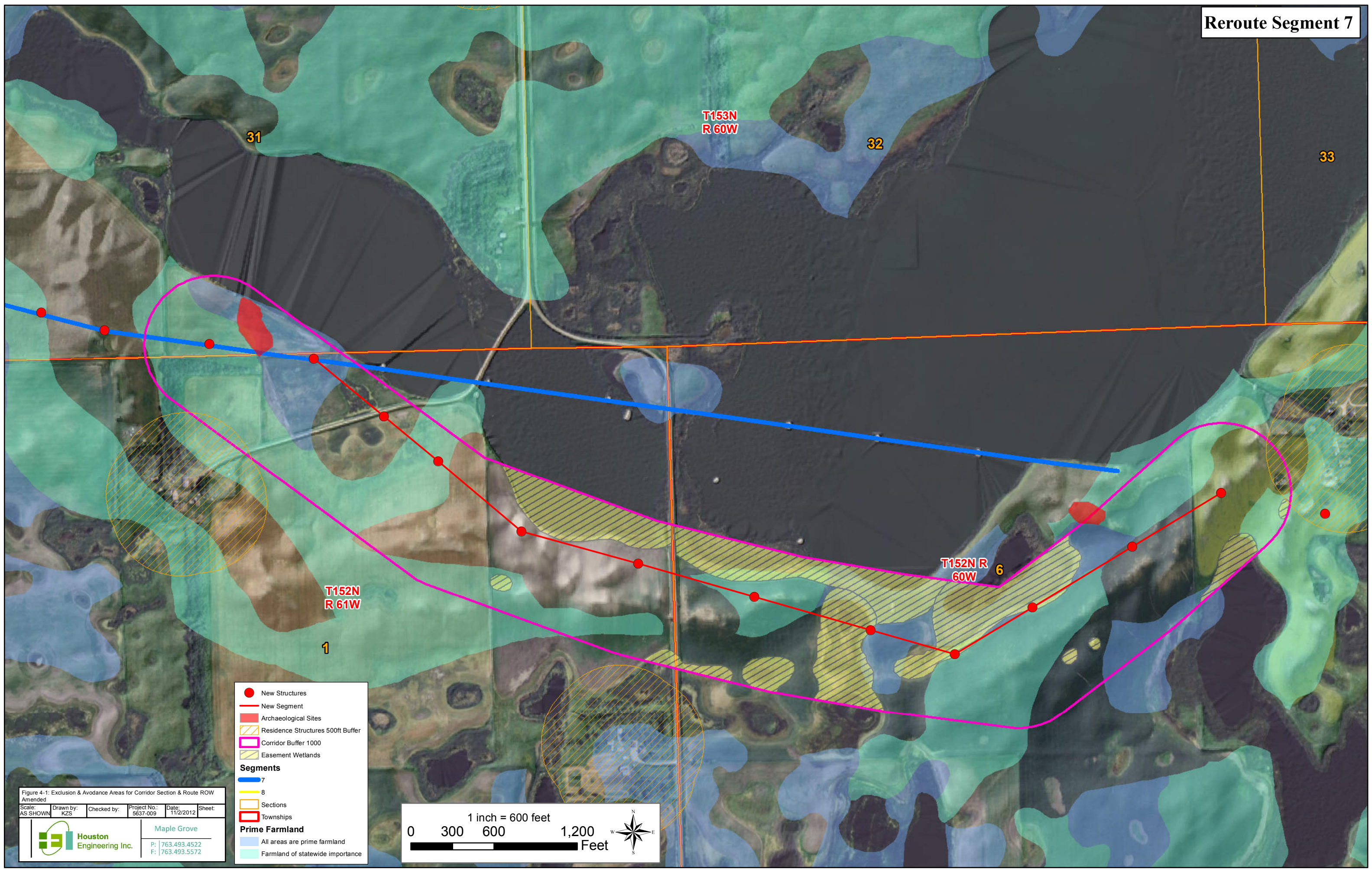
GREAT RIVER ENERGY



Carole L. Schmidt
Supervisor, Transmission Permitting and Compliance

Attachments

cc: Jerry Lein, PSC
Chuck Lukkarila, GRE

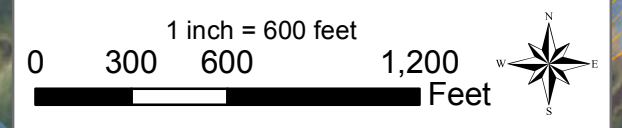


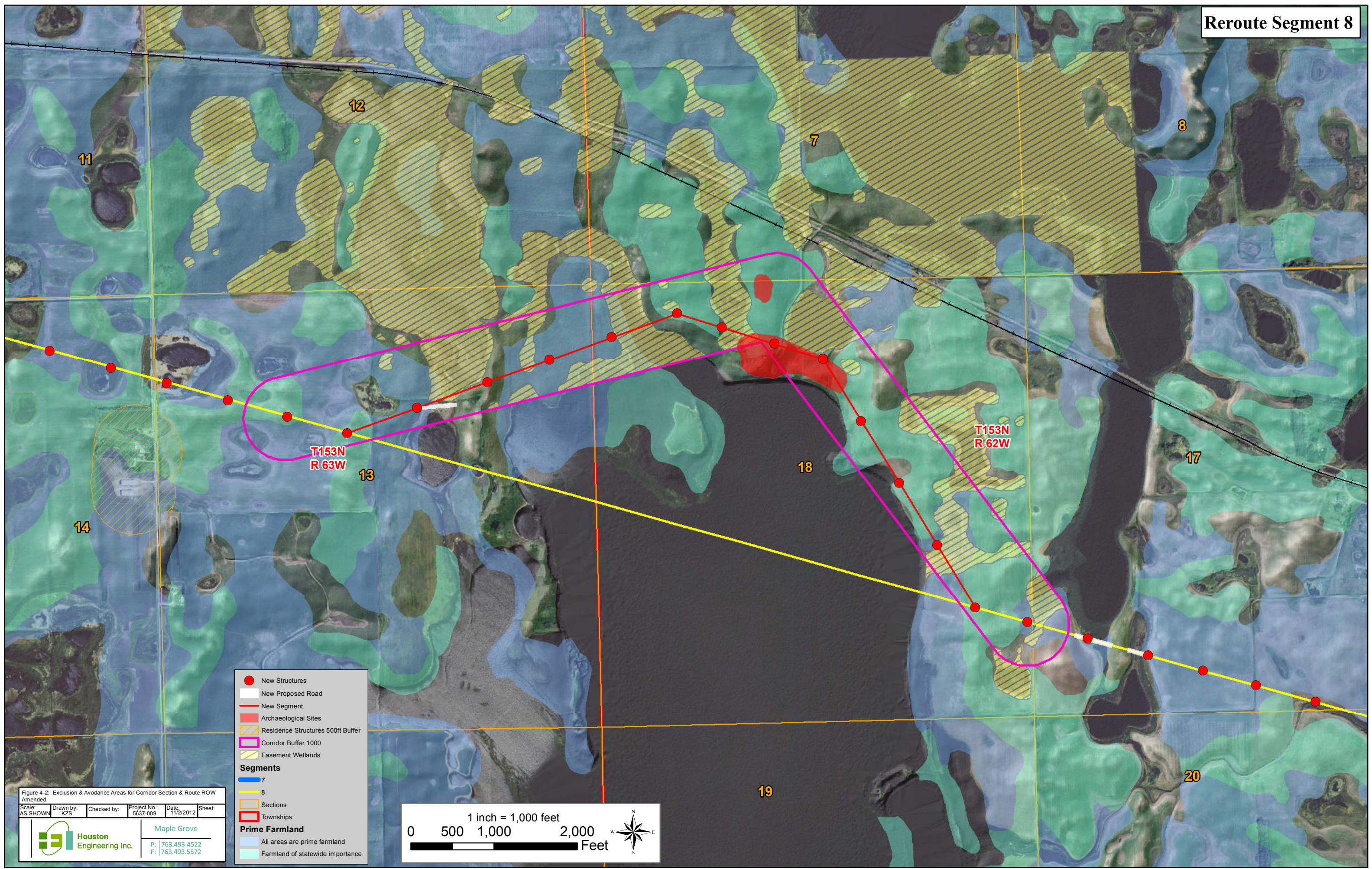
- New Structures
 - New Segment
 - Archaeological Sites
 - ▨ Residence Structures 500ft Buffer
 - ▨ Corridor Buffer 1000
 - ▨ Easement Wetlands
- Segments**
- 7
 - 8
- Sections**
- 1
 - 6
- Townships**
- T152N
 - T153N
- Prime Farmland**
- All areas are prime farmland
 - Farmland of statewide importance

Figure 4-1: Exclusion & Avoidance Areas for Corridor Section & Route ROW Amended

Scale: AS SHOWN	Drawn by: KZS	Checked by:	Project No.: 5637-009	Date: 11/2/2012	Sheet:
-----------------	---------------	-------------	-----------------------	-----------------	--------

Houston Engineering Inc.
 Maple Grove
 P: 763.493.4522
 F: 763.493.5572





- New Structures
- New Proposed Road
- New Segment
- Archaeological Sites
- Residence Structures 500ft Buffer
- Corridor Buffer 1000
- Easement Wetlands

Segments

- 7
- 8

Sections

- Sections
- Townships

Prime Farmland

- All areas are prime farmland
- Farmland of statewide importance

Figure 4-2: Exclusion & Avoidance Areas for Corridor Section & Route ROW Amended

Scale: AS SHOWN	Drawn by: KZS	Checked by:	Project No.: 5637-009	Date: 11/2/2012	Sheet:
-----------------	---------------	-------------	-----------------------	-----------------	--------

Maple Grove

Houston Engineering Inc.

P: 763.493.4522
F: 763.493.5572

1 inch = 1,000 feet

0 500 1,000 2,000 Feet