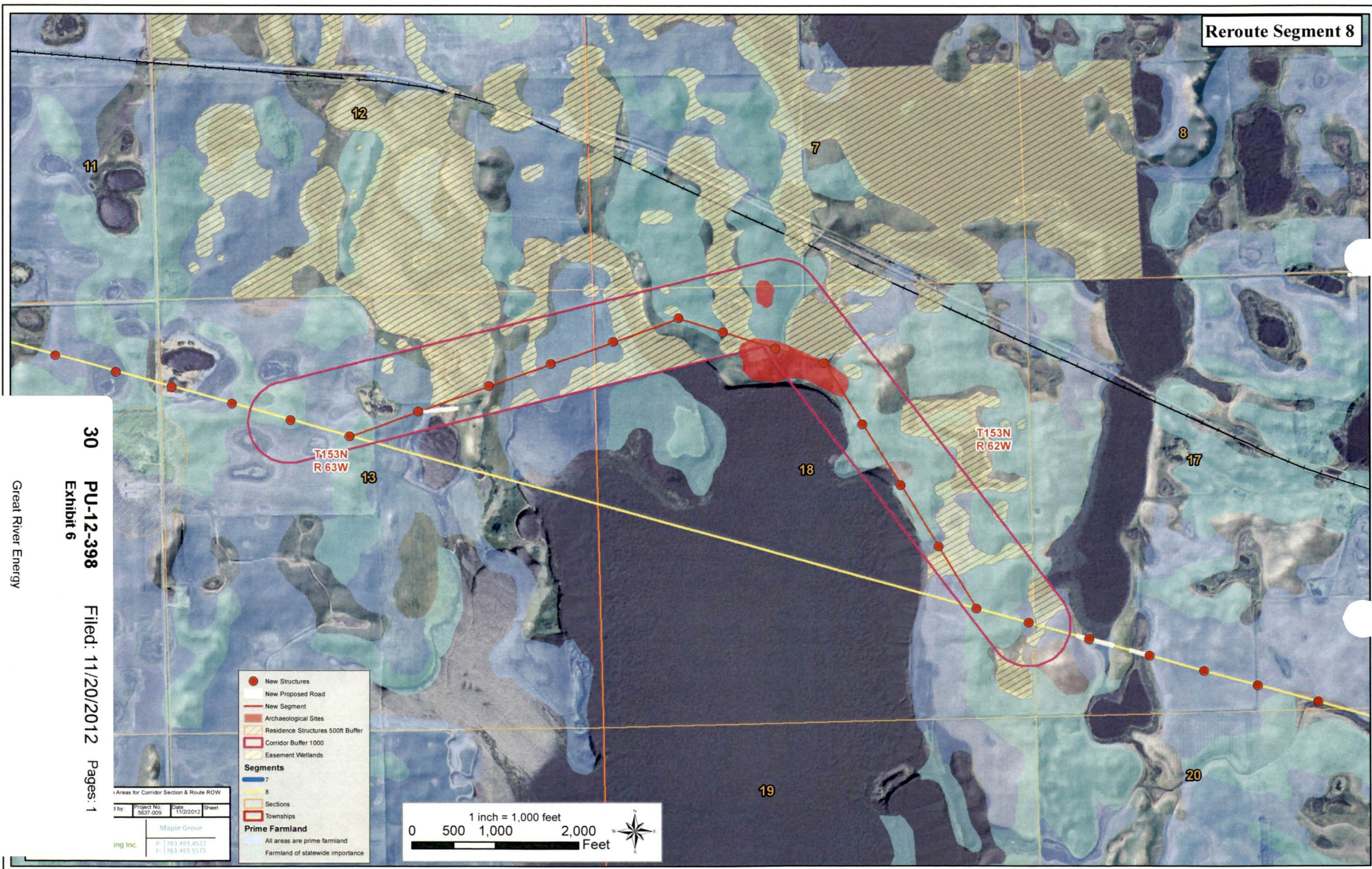


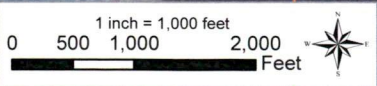
Reroute Segment 8



- New Structures
 - New Proposed Road
 - New Segment
 - Archaeological Sites
 - Residence Structures 500ft Buffer
 - Corridor Buffer 1000
 - Easement Wetlands
- Segments**
- 7
 - 8
- Townships**
-
- Prime Farmland**
- All areas are prime farmland
 - Farmland of statewide importance

Areas for Corridor Section & Route ROW

Prepared by	Project No.	Date	Sheet
Maple Grove	6637-009	11/20/2012	
ing Inc.	P: 763.493.4522	F: 763.493.5572	



30 PU-12-398 Filed: 11/20/2012 Pages: 1
Exhibit 6

Great River Energy