

NOTE: REFER TO THE STRUCTURE LIST FOR DETAILED DESIGN INFORMATION.

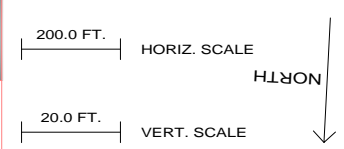
REV 1: AS-BUILT MODELING FOR NERC ANALYSIS - 03/12
 REV 2: LINE REROUTED FROM STRUCTURES 449 TO 459 - 12/13

REVISIONS

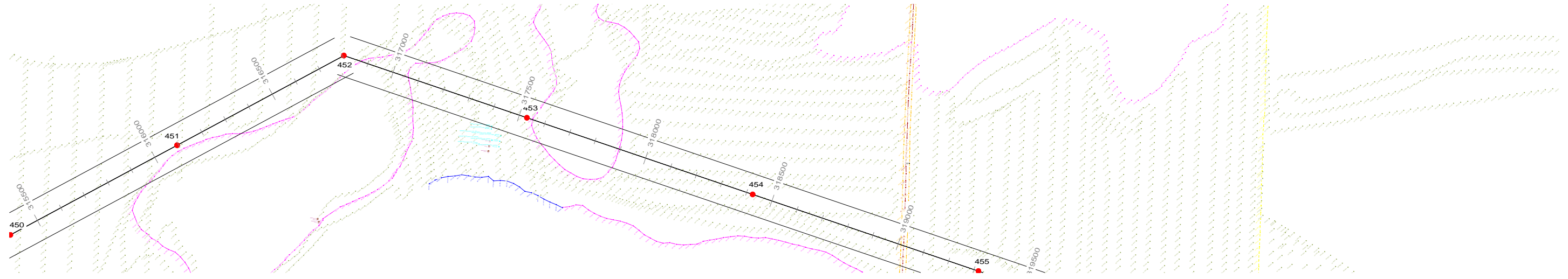
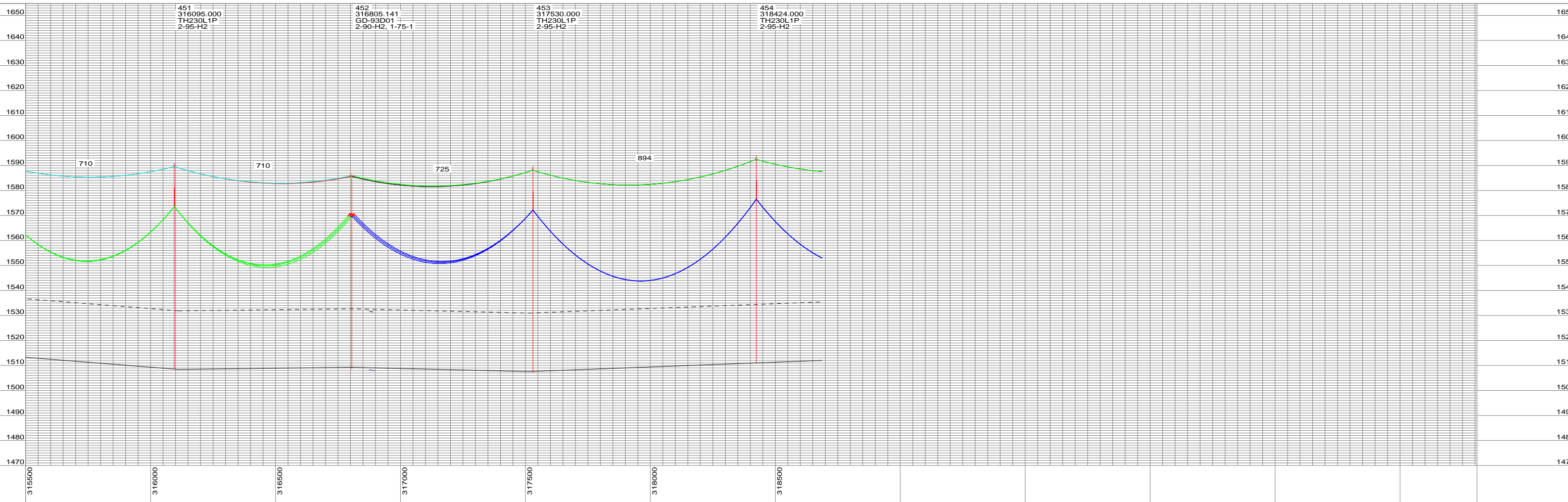
APPROVALS	DATE	DESIGN DATA
DRAWN BY: XP-RS	05/11	CONDUCTOR: 954 ACSR 45/7 DESIGN TENSION: SEE STAKING SHEET RULING SPAN: SEE STAKING SHEET
DESIGN BY: KJO	12/13	
CHECKED BY: JMM	12/13	SHIELD WIRE: 7/16 EHS DESIGN TENSION: SEE STAKING SHEET RULING SPAN: SEE STAKING SHEET
APPROVED BY: JMM	12/13	

GREAT RIVER ENERGY 

GD LINE: PRAIRIE TO RAMSEY
 230 KV TRANSMISSION LINE



DWG. NO.
 GD-91D
 REVISION:
 SHEET 19 OF 41



NOTE: REFER TO THE STRUCTURE LIST FOR DETAILED DESIGN INFORMATION.

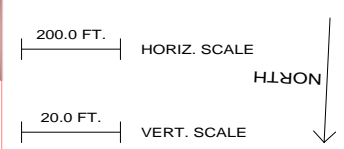
REV 1: AS-BUILT MODELING FOR NERC ANALYSIS - 03/12
 REV 2: LINE REROUTED FROM STRUCTURES 449 TO 459 - 12/13

REVISIONS

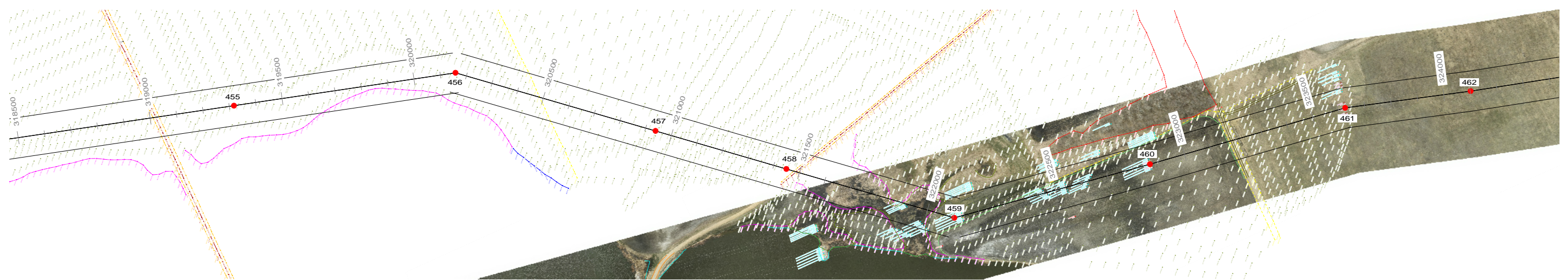
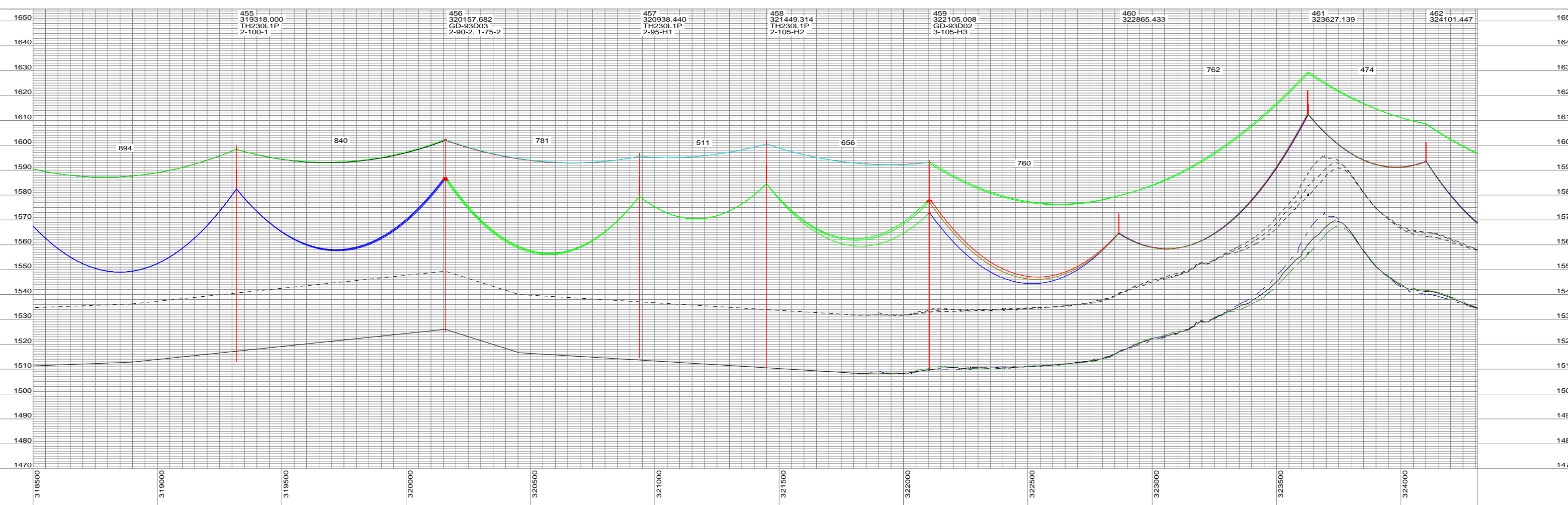
APPROVALS	DATE	DESIGN DATA
DRAWN BY: XP-RS	05/11	CONDUCTOR: 954 ACSR 45/7 DESIGN TENSION: SEE STAKING SHEET RULING SPAN: SEE STAKING SHEET
DESIGN BY: KJO	12/13	
CHECKED BY: JMM	12/13	SHIELD WIRE: 7/16 EHS DESIGN TENSION: SEE STAKING SHEET RULING SPAN: SEE STAKING SHEET
APPROVED BY: JMM	12/13	

GREAT RIVER ENERGY 

GD LINE: PRAIRIE TO RAMSEY
 230 KV TRANSMISSION LINE



DWG. NO.
 GD-91D
 REVISION:
 SHEET 20 OF 41



NOTE: REFER TO THE STRUCTURE LIST FOR DETAILED DESIGN INFORMATION.

REV 1: AS-BUILT MODELING FOR NERC ANALYSIS - 03/12
 REV 2: LINE REROUTED FROM STRUCTURES 449 TO 459 - 12/13

REVISIONS

APPROVALS	DATE	DESIGN DATA
DRAWN BY: XP-RS	05/11	CONDUCTOR: 954 ACSR 45/7 DESIGN TENSION: SEE STAKING SHEET RULING SPAN: SEE STAKING SHEET
DESIGN BY: KJO	12/13	
CHECKED BY: JMM	12/13	SHIELD WIRE: 7/16 EHS DESIGN TENSION: SEE STAKING SHEET RULING SPAN: SEE STAKING SHEET
APPROVED BY: JMM	12/13	

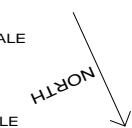
GREAT RIVER ENERGY

GD LINE: PRAIRIE TO RAMSEY
 230 KV TRANSMISSION LINE



200.0 FT. HORIZ. SCALE

20.0 FT. VERT. SCALE



DWG. NO.

GD-91D

REVISION:

SHEET 21 OF 41