



Tab 1- Regional Specific

Figure 1- Revision Process Flowchart
Revision Process
Revision Request Form
Revision Record
Operator Identification
Qualified Individual
Response Zone Description

Tab 2- Company/Cooperative Equipment Lists

Enbridge Emergency Response Equipment and Boat Inventories
Station Response Equipment Guidelines
Winter Spill Equipment
Primary Water Recovery Equipment
Mutual Aids/Co-ops
OSRO (Oil Spill Response Organization)
Canadian Cross Border Emergency Response Equipment – Gretna Manitoba
Qualified Individuals Notification
Emergency Response Trained Personnel

Tab 3- Maps and Reference

Pipeline System Map
Main Line Valves
Unusually Sensitive Areas (USA) Overview Map
USA Tables
Emergency Response/Worst-Case Discharge Location Map
Worst-Case Discharge Inset Maps
Form F- Release Alert
Site Safety Plot Plan

Tab 4- Control Point Maps

Control Point Map Process
Control Point Map Record

Tab 5- Region Security Plan

Appendix

Info Summary
Operator Identification
Response Zone Description Reference
Consistency with National and Area Contingency Plans
Calculation of Worst-Case Discharge
Identification of Environmentally Sensitive Areas
Basis for Determination of Significant and Substantial Harm

Region Specific

Region Specific

Figure 1- Revision Process Flowchart

Revision Process.....	1
Revision Request Form.....	2
Revision Record.....	3
Operator Identification & Qualified Individual.....	4
Response Zone Description.....	5
Superior Region (#866) Description	
Counties included in the Chicago Region Response Zone	
Pipeline Miles	

Revision Process Flowchart

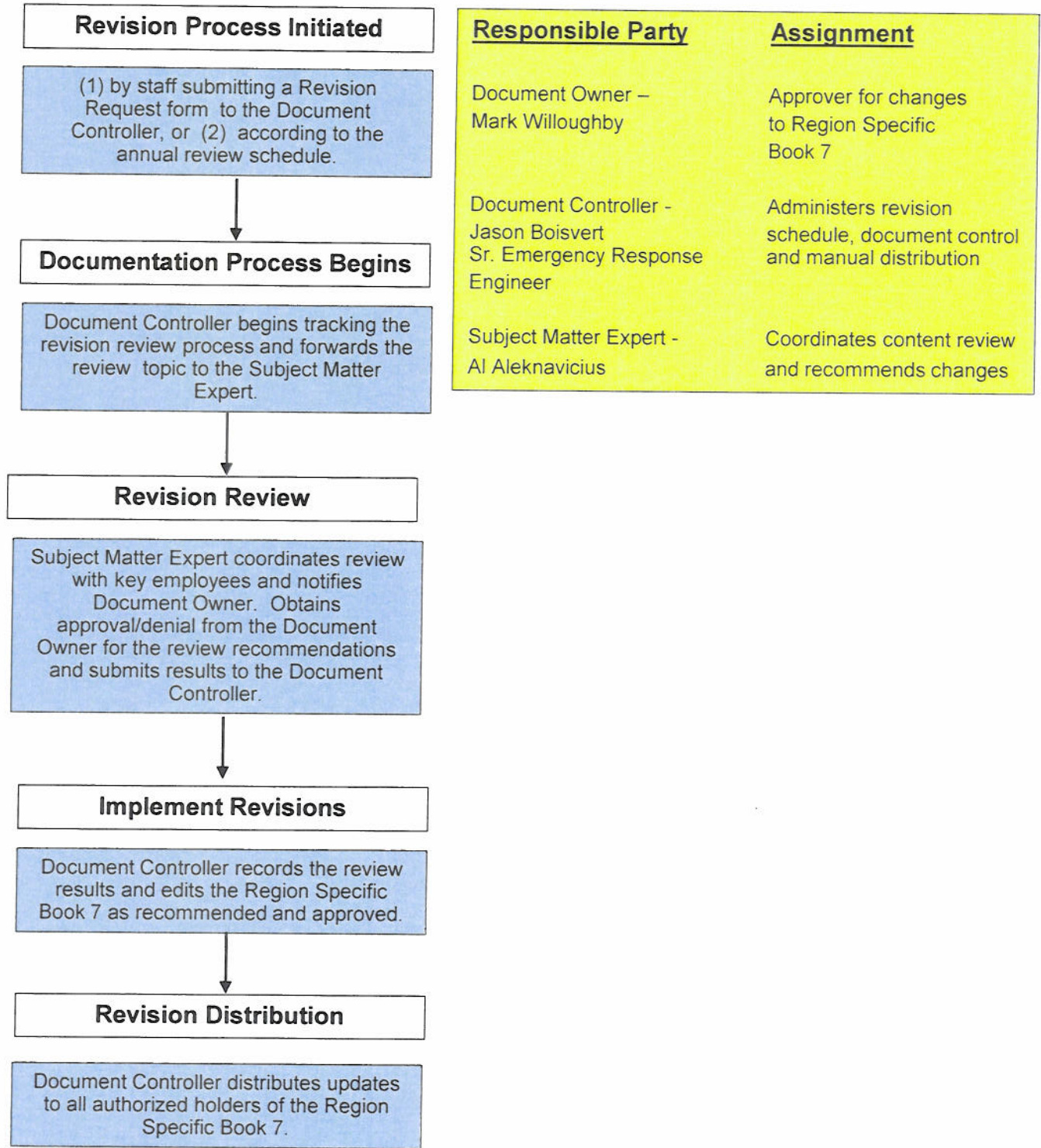


Figure 1



REVISION PROCESS

Enbridge requires a review and update to the regional *Emergency Response Plan (ERP)* immediately when a substantial change occurs. The following operating condition changes would be cause for a modification:

- Extension of existing pipeline;
- Construction of new pipeline;
- Type of oil transported;
- Worst-Case Discharge;
- Qualified Individual;
- Response Procedures;
- Response Equipment Requirements; or
- Circumstances that may influence full implementation of the ERP.

Annually, as HCA Management Plans are reviewed and HCA maps and tables are updated all maps and worst-case discharge changes will be incorporated into the regional *Emergency Response Plans*. Review of the O&MP will ensure that the most accurate drawings and references are included in Book 7: Emergency Response.

In the event of a revision requirement before the annual review, a revision request may be submitted for consideration by completing and sending a Revision Request Form to the Manual Custodian of this Plan (Emergency Response Coordinator in the Superior Office). As required of *CFR49 §194.121*, within thirty days of a revision incorporated into the *Emergency Response Plan*, Pipeline and Hazardous Materials Safety Administration (PHMSA) will be notified.

The Revision Request Form is examined and when integrated, it is listed on the Annual Revision Sheet with the revisions sent to respective manual holders to update their manuals. The Revision Record within each manual is to be signed and dated whenever a revision is issued.



Revision Request Form

Photocopy this form and return the original to your manual.

Name: _____ Date: _____

Subject Title: _____

Section No.: _____ Subsection No.: _____ Page No.: _____

Date Issued: _____ (printed at bottom left-hand corner of page)

Existing wording: _____

Proposed wording: _____

Reason for change: _____

Issued: 10/31/11

Submit Request Form to the Document Controller



REVISION RECORD

Use this Revision Record to document the insertion of all revisions. After inserting a revision into your manual, enter the date inserted and your signature. Discard old pages. Detailed supporting documents (Revision Request Form) for each of the revisions are retained in the Superior Region Office.

Revision	Date Requested	Date Inserted	Signature
01		6-5-09	√
02		1-30-10	
03	9/10/11	1-6-12	Cheryl Allen
04			
05			
06			
07			
08			
09			
10			
11			
12			
13			
14			
15			
16			
17			
18			
19			
20			
21			



OPERATOR IDENTIFICATION

Enbridge (U.S.) Inc.
Operates the Enbridge Energy, Limited Partnership Pipeline System
1100 Louisiana, Suite 3200
Houston, TX 77002-5216
(713) 650-8900 (Phone Number)
(713) 653-8711 (Fax)

24 hr. Contact: 800-858-5253 via Edmonton Control Center

QUALIFIED INDIVIDUAL(S)

M. J. Willoughby
Superior Region General Manager, Enbridge (U.S.) Inc.
Business: 715-394-1410
Mobile: 218-393-5772
Business FAX: 715-394-1405

Mike Goman
Manager, Technical Services
Business: 715-394-1523
Mobile: 218-428-5027
Business FAX: 715-394-1405

Al Aleknavicius
Manager, Pipeline Services
Business: 715-394-1415
Mobile: 218-591-2818
Business FAX: 715-394-1405

Enbridge Pipelines (Lakehead), L.L.C.
Superior Central Square Office
1320 Grand Ave.
Superior, WI 54880

NOTE: For overview of **emergency procedures** and **contact information** refer to the *Enbridge Emergency Response Directory (ERD)*.



ENBRIDGE U.S. INC. RESPONSE ZONE DESCRIPTION

The Enbridge Liquids Pipeline System (Lakehead System) consists of four response zones. These response zones represent the regional boundaries designated in the normal operating structure. The response zones include:

- **Superior Region - #866** is comprised of-
Enbridge Energy, Limited Partnership (Lakehead)
Enbridge Pipelines (Southern Lights) L.L.C.
- Chicago Region
- Cushing Region
- Enbridge Pipelines North Dakota

SUPERIOR REGION RESPONSE ZONE (#866)

The Superior Region response zone consists of two entities: Enbridge Energy, Limited Partnership and Enbridge Pipelines (Southern Lights) L.L.C. This response zone begins at the Canadian border near Neche, North Dakota and continues across northern Minnesota into Wisconsin and Michigan. The first section of this response zone includes seven pipelines (Lines 1, 2, 3, 4, 13, 65, and 67) that transport crude oil and natural gas south and diluent condensate north. The response zone continues south of Superior to Ladysmith, WI with four pipelines (Lines 6A, 13, 14, and 61) transporting crude oil and diluent condensate. A 30-inch pipeline (Line 5) originates in Superior, WI that transports crude oil and natural gas liquids west across northern Wisconsin, the Upper Peninsula of Michigan and into lower Michigan with the Superior Region ending south of Indian River, MI.

The Superior Region system is comprised of eleven pipelines with adjoining facilities:

Enbridge Energy, Limited Partnership (Lakehead) includes:

- **Lines 1** (18"/20"), **2** (26"), **3** (34"), **4** (36"/48"), and **67** (36") extend from the US/Canadian border near Gretna, Manitoba to Superior, Wisconsin;
- **Line 65** (20") begins at the US/Canadian border near Gretna, Manitoba and terminates at Clearbrook, Minnesota;
- **Line 5** (30") starts at Superior, Wisconsin extends north of Lake Michigan, and terminates at Sarnia, Ontario. The Superior Region ends south of the Indian River, Michigan station at MP 1544.25.
- **Lines 6A** (34") and **14** (24") begin at Superior, Wisconsin and traverse south of the Great Lakes, with Line 14 terminating at Mokena, Illinois and Line 6A terminating at Griffith, Indiana. The Superior Region ends at the Ladysmith, Wisconsin station for both lines.
- **Line 61** (42") (Southern Access) extends from Superior, Wisconsin to Flanagan, Illinois. The Superior Region ends at Ladysmith, Wisconsin.

Enbridge Pipelines (Southern Lights) L.L.C.:

- **Line 13** (18"/20") runs from Manhattan, Illinois to the US/Canadian border near Gretna, Manitoba. The Superior Region includes the segment north of Ladysmith, Wisconsin.



The Superior Region system is comprised of:

- Approximately 2,937 miles of pipeline, with pipe diameters ranging from 18 to 48 inches;
- 17 crude oil and diluent pump stations and 10 natural gas pump stations located along the pipe; and
- Two tank facilities with a total of 49 tanks (40 tanks are located at Superior, WI (8.7 million barrels storage capacity); nine at Clearbrook, MN (1.3 million barrels storage capacity)).

Counties included in the Superior Region response zone are:

North Dakota	Minnesota	Wisconsin	Michigan
Pembina	Aitkin	Ashland	Cheboygan
	Beltrami	Bayfield	Delta
	Carlton	Douglas	Dickinson
	Cass	Iron	Emmet
	Clearwater	Rusk	Gogebic
	Hubbard	Sawyer	Iron
	Itasca	Washburn	Mackinac
	Kittson		Marquette
	Marshall		Otsego
	Polk		Schoolcraft
	Red Lake		
	St. Louis		



This response zone includes the following pipelines:

Line	Pipeline Sections	Begin Stationing	End Stationing	Miles	Pipeline Diameter	Product
1	Gretna, Manitoba to Clearbrook, MN	0	716,232	135.7	20"	Crude Oil & Natural Gas Liquids
1	Clearbrook, MN to Superior, WI	716,232	1,712,883	188.8	18"	Crude Oil & Natural Gas Liquids
2	Gretna, Manitoba to Superior, WI	0	1,712,887	324.4	26"	Crude Oil
3	Gretna, Manitoba to Superior, WI	0	1,712,887	324.4	34"	Crude Oil
4	Gretna, Manitoba to Donaldson, MN (MP814)	0	168,408	31.9	36"	Crude Oil
4	Donaldson, MN (to Viking, MN	168,041	213,109	8.5	48"	Crude Oil
4	Donaldson, MN to Viking, MN (MP 834)	213,461	322,423	20.6	36"	Crude Oil
4	Donaldson, MN to Plummer, MN	320,971	393,021	13.6	48"	Crude Oil
4	Viking, MN to Plummer, MN (MP 874)	394,395	527,703	25.2	36"	Crude Oil
4	Viking, MN to Clearbrook, MN	526,404	545,840	3.7	48"	Crude Oil
4	Plummer, MN to Clearbrook, MN (MP 909)	547,141	647,345	19.0	36"	Crude Oil
4	Plummer, MN to Clearbrook, MN	645,406	716,261	13.4	48"	Crude Oil
4	Clearbrook, MN to Cass Lake, MN Loop (MP 940)	716,411	878,927	30.8	36"	Crude Oil
4	Cass Lake, MN Loop (MP939.87 to MP953.04)	877,981	946,695	13.1	48"	Crude Oil
4	Clearbrook, MN to Deer River, MN Loop (MP 996)	946,641	1,059,570	21.4	36"	Crude Oil
4	Deer River, MN Loop (MP974.73 to MP995.83)	(127,102)	1,173,196	22.0	48"	Crude Oil
4	Cass Lake, MN to Floodwood, MN Loop (MP 1044) <i>*Diversion Stationing</i>	1,173,151	1,306,304	25.2	36"	Crude Oil



Line	Pipeline Sections	Begin Stationing	End Stationing	Miles	Pipeline Diameter	Product
4	Floodwood, MN Loop (MP1019.73 to MP1044.33)	1,299,654	(47,009)	24.6	48"	Crude Oil
4	Deer River, MN to Wrenshall, MN Loop (MP 1080)	1,429,072	1,512,231	15.7	36"	Crude Oil
4	Wrenshall, MN Loop (MP1060.11 to MP1079.91)	1,512,091	1,616,806	20.0	48"	Crude Oil
4	Wrenshall, MN Loop to Superior, WI (MP 1098)	1,616,840	1,712,760	19.8	36"	Crude Oil
Southern Lights 13	Gretna, Manitoba to Clearbrook, MN	0	715,074	135.4	18"	Diluent Condensate
Southern Lights 13	Clearbrook, MN to Superior, WI	0	1,003,300	190	20"	Diluent Condensate
Southern Lights 13	Superior, WI to Ladysmith, WI	0	524,052	99	20"	Diluent Condensate
Alberta Clipper 67	Gretna, Manitoba to Superior, WI	0	1,723,800	326.7	36"	Crude Oil
5	Superior, WI to Mackinaw, MI	0	1,993,306	377.5	30"	Crude Oil & Natural Gas
5	Straits of Mackinac East and West (*2)	1,993,306	2,015,016	8.2	20"	Crude Oil & Natural Gas
5	Straits of Mackinac to Lewiston Pump Station MP1544.3	2,015,016	2,378,371	68.8	30"	Crude Oil & Natural Gas
6A	Superior, WI to MP97.23 (Ladysmith, WI)	0	513,368	97.2	34"	Crude Oil
14	Superior, WI to MP97.23 (Ladysmith, WI)	0	512,719	97.1	24"	Crude Oil
61	Superior, WI to MP97.23 (Ladysmith WI)	0	523,170	99.08	42"	Crude Oil
LSr (65)	Gretna, Manitoba to Clearbrook, MN	0	721,140	136.6	20"	Crude Oil
	Total Pipeline Miles			2937.38		

*Diversion Stationing

Company/Co-Op Equipment Lists



Company/Cooperative Equipment Lists

Company-

Superior Terminal Inventory.....	2
Clearbrook Terminal Inventory.....	3
Thief River Falls PLM Inventory.....	4
Bemidji PLM Inventory.....	6
Superior PLM Inventory.....	9
Ironwood PLM Inventory.....	11
Escanaba PLM Inventory.....	13
Station Response Equipment Guidelines.....	18
• Manistique Station	
• Gould City Station	
• St. Ignace Valve	
• Mackinac Station	
• Indian River	
Winter Spill Equipment.....	22
Primary Water Recovery Equipment.....	23

Other-

Government, Contractors or other Cooperative Resources-

Twin Ports Mutual Aid Group.....	25
OSRO.....	28

Canadian Cross Border Emergency Response Equipment

Gretna Manitoba.....	29
----------------------	----

Qualified Individuals Notification.....	41
--	-----------

Emergency Response Trained Personnel.....	42
--	-----------



ENBRIDGE EMERGENCY RESPONSE EQUIPMENT

As required in the Federal Response Framework and Area Contingency Plans, Enbridge owns and maintains extensive emergency response equipment throughout its liquid pipeline systems. This equipment is located at all area office locations as well as other strategic locations along the system to ensure a prompt containment and recovery response in the event of a pipeline release. It is the responsibility of each Area Supervisor/Maintenance Team Leader to ensure that the equipment is inventoried annually and restocked as resources are expended.

Further company owned and maintained equipment is stored in listed trailers at local area storage facilities for immediate response until additional resources arrive. These resources are maintained and restocked by the respective area supervisors as needed.

Temporary storage is available via company owned and operated storage tanks throughout the pipeline system. Recovered product can often be off loaded at pump stations and re-injected into the pipeline. Numerous portable storage tanks are included in emergency response equipment inventories and in many areas, the company owns and maintains vacuum recovery trucks. Further details of this storage capacity can be found in the water recovery equipment inventory.

Enbridge has Master Service Agreements with Garner Environmental Services Inc. and Bay West to supplement resources in the event of a worst-case discharge scenario. Both of these entities are United States Coast Guard (USCG) classified Oil Spill Response Organizations (OSRO). A copy of Garner's OSRO equipment inventory is kept on file at the regional offices.

Numerous other HAZWOPER trained contractors may be utilized for emergency response and their contact information and resources can be found listed by response zone in the *Enbridge Emergency Response Directory* (ERD). Enbridge does not retain equipment inventory lists for all non USCG classified contractors.



SUPERIOR TERMINAL EMERGENCY RESPONSE INVENTORY	
QTY	DESCRIPTION

FIRE BARN

6	Barricades
2	Foam Trailers - 700 Gal. & 500 Gal.
17	Barrels AFFF Foam
13	50 # Pails of Dry Chemical Fire Extinguishing Agent
50	Bundles Sorbent Pads - 100 / Bundle
15	Bags 8" x 10' Sorbent Booms - 40'/Bag
45	2 ½" x 50' Fire Hose

SUPERIOR TERMINAL -

CONTINGENCY BUILDING

10	Bags 8" x 10' Sorbent Booms - 40'/Bag
13	Bundles Sorbent Pads - 100/Bundle
4	#2 Shovels
2	Flat Shovels
4	Aluminum Scoop Shovels
1	Sledge Hammer
15	Bundles of 5 Fence Posts
2	Scrub Brushes- No Handles
3	Squeegees- No Handles
10	Extra Squeegee Blades
4	Brass Scrapers
5	Prs. Chest Waders
1	Spill Kit
3	Sheets of ½" Plywood
1	Sheet of 2" Foam Insulation
2	Sheets of Hardboard
19	12' 2X4s & 6s
2	Pick Axes
7	50' x 3' Plastic Hose
3	50' x 3' Wire Fence
1	Roll Orange Safety Fence
4	15" x 8' Sorbent Booms

SUPERIOR TERMINAL

MAINTENANCE SHOP

9	Aluminum Scoop Shovels
4	Rakes
2	Fan Rakes
1	Pitch Forks
2	#2 Shovels
3	Flat Shovels
1	Aluminum Square Shovels
3	Squeegees



MAINTENANCE SHOP cont.

QTY	DESCRIPTION
3	Rescue Harnesses
1	100' Rope
2	Brooms
5	10 Minute Emergency Escape Packs

CLEARBROOK TERMINAL EMERGENCY RESPONSE INVENTORY

MAIN BUILDING

5	Escape Packs
3	30-Minute Scott SCBA's
1	Tank Rescue Equipment
4	Harness'
8	Assorted Fire Retardant Coveralls
2	Squeegees
4	Snow Shovels
7	Windsocks

CLEARBROOK TERMINAL

UTILITY BUILDING

1	500 Gal. Foam Trailer (Full)
4	Squeegees
2	Aluminum Scoop Shovels
4	Square Shovel
2	Leaf Rakes
2	Garden Rake
1	Sledge Hammer
1	Axe
3	Ice Scrapers
20	2 ½" Fire Hose (50' Rolls)
5	1 ¼" Fire Hose (50' Rolls)
13	50# Pails of Purple K Fire Extinguisher Agent
1	55 Gal. Barrel of 3%-6% Foam
2	3" Suction Hose (10' Piece)
1	2" Suction Hose (10' Piece)
2	3" Discharge Hose (50' Rolls)
3	2" Discharge Hose (50' Rolls)
100'	Rope
1	Pressure Washer/Steamer
1	2" Diaphragm Pump
1	1" Diaphragm Pump
1	Generator
2	Brooms



CLEARBROOK TERMINAL

METERING BUILDING

QTY	DESCRIPTION
7	Bags of Sorbent Pads (100/Bag)
28	3"x 8' Sorbent Booms
5	Bags of 8"x 10' Sorbent Booms (40' /Bag)
5	Box of Tyvek Coveralls (25/Box)
3	Brooms
	2 Pneumatic Air Movers

CLEARBROOK TERMINAL

PRESSURE WASHER BUILDING

3	Squeegees
2	Brooms
1	Pressure Washer/Steamer

CLEARBROOK TERMINAL

OLD COLD STORAGE BUILDING

20	Rolls of Snow Fence (Orange)
50	Fence Posts

THIEF RIVER FALLS PLM ER INVENTORY

PLM COMMAND POST

1	Emergency Response Directory (ERD)
10	Contractor Handbook
1	Minnesota Atlas
2	Flashlights
10	Gloves
1	Earplug
16	Safety goggles
1	Flare Gun and Cartridges
4	Pipeline Strip Maps
2	Hard Hats
3	Trash Bags
2	Caution Tape

THIEF RIVER FALLS

PLM BOOM TRAILER INVENTORY

3,000'	12" Floating Containment Boom
2	8' Oil Skimmers
8	Adjustable Boom Deflectors
6	Anchor Marker Buoys with Connectors
10	Anchors
15	Life jackets
12	Totes of Nylon Rope (Various Lengths - 25', 50', 100', 150'), with Quick Connect Fittings
1	Sledge Hammer



PLM LEAK TRAILER cont.

QTY	DESCRIPTION
8	Drive-in Post Anchors
1	Metal Stretcher
2	Stop / Slow Signs
1	Roll Plastic Fence
2	Stihl Chainsaws with Ice Blades
2	Quarts Chain Caw Oil
2	Pair Chain Saw Chaps
2	Chain Saw Hard Hats with Ear Muffs and Face Shields Attached
1	Pair Ice Tongs
4	Slotted # 2 Shovels
2	# 2 Shovels
1	Bolt Cutter
1	Axe
1	Post Pounder for Fencing
1	Staple Gun
1	3" Skimmer with Air Hose and Controls
4	Face Shields with Hard Hat Adapters
8	Sets Rain Gear
1	Roll Reflective Tape
2	Reflective Vests
1	12V Spotlight
2	AC Trouble Lights
12	Pair Rubber Gloves
8	Pair NGI Sleeves
1	Windsocks with Attachments for Mounting on Leak Trailer
8	Flashing Lights with Holders
5	Harnesses
6	NGL Aprons
10	Pair Insulated Rubber Gloves
12	Security Barricades
25	Safety Cones
1	Fire Extinguisher -30# Ansul
2	Bundles, Absorbent Pads
1	Eskimo ice auger
36	Decontamination Suits
1	Poly Sprayers for Decon
4	55 Gal. Containers with Covers
1	Box of Rags
1	25' Extension Cord
18	"Bird Chasers" - Wildlife Deterrents
1	Aerial Owl Predator
6	Rolls Plastic Sheeting
9	Pairs, Ice Picks of Life
1	Eagle Predator
6	Scrub Brushes
4	Brooms



THIEF RIVER FALLS PLM LEAK TRAILER cont.

QTY	DESCRIPTION
3	Fire Blankets
	Assorted Kamlock Fittings
	Assorted Lumber – 2 x 4 x 12, 2 x 6 x 12
1	Roll 5/8' Rope
6	Squeegees

BEMIDJI PLM ER INVENTORY

PLM MISCELLANEOUS

2	3000 Watt Generator
1	3500 Watt Generator
4	3" Gas Water Pump
2	2" Gas Water Pump
12	2" Electric Water Pump
3	3" Hydraulic Oil Pump
2	3" Air Oil Pump
25	2" X 50' Discharge Water Hose
8	3" x 50' Water Discharge Hose
20	3" x 20' Water Suction Hose
6	2" x 20' Water Suction Hose
22	3" X 20' Oil Suction Hose
13	2" X 20' Oil Suction Hose
24	2" X 8' Oil Sorbent Mini Booms
5	50' Fast Water Boom
20	Pairs of Ice Cleats
7	Rolls of 3/8" Twist Poly Rope 600'/Roll
20	30" Squeegee's
4	Drums for 4' Skimmer
4	Drums for 8' Skimmer
80	8" x 10' Oil Sorbent Boom
24	Bags 17" x 19" Oil Sorbent Pads 100/Bag
2	38" x 144' Oil Sorbent Rolls

BEMIDJI

PLM BOOM TRAILER INVENTORY- # 220

360'	Sorbent Boom
500'	Floating Oil Containment Boom
350'	18" Long Skirt Containment Boom
100'	12" Long Skirt Containment Boom
2	8" Barrel Skimmers
2	Bridge Pier Bridles
8	Boom Couplers
7	Buoy Markers
19	Tow Bridles
6	Life Jackets
1	Windsock
1	First-Aid Kit



BEMIDJI

PLM LEAK TRAILER #109

QTY	DESCRIPTION
10	Bundles Sorbent Pads
200'	Sorbent Boom
4	Road Barricades W/Flashing Lights
12	Pair Iceman Boots
10	Pair Hip Boots
1	Generator
1	Axe
1	Sledge Hammer
1	2' Water Pump
1	Grounding Rod/Probe/Fence Post
8	Shovels
1	First-Aid Kit
12	Protective Sleeves
5	Pair Insulated Gloves
10	Sets Fire Retardant Rain Gear
20	Pair Rubber Gloves
5	Face Shields
5	Aprons
2	Scott Air Packs
10	Reflective Vests
1	Air Horn
2	Fire Blankets
4	Danger Signs
	Incident Command System Vests
1	12-Volt Spot Lights
2	Windsock
	Assortment of Reflective Tape and Caution Tape
21	Pair of Coveralls
7	Winter Coats
1	Winter Bib
2	Portable Generators
1	Box Scare Balloons For Wildlife
10	100' Safety Signs
6	Cold Zone Signs
6	Warm Zone Signs
6	Hot Zone Signs
2	Emergency Response Signs
1	Stretcher
12	Fence Posts
1	Roll Fence
2	2" Rigid Suction Hose
2	3" Rigid Suction Hoses
1	2" Discharge Hose
1	Chain Saw



PLM LEAK TRAILER #109 cont.

QTY	DESCRIPTION
1	Scare Eagle for Wildlife
1	2" Trash Pump
	NGL Flare Launchers in Vehicles
30	Traffic Cones
2	3" Diaphragm Pumps
3	Life Vests
3	Sets of Ice Cleats
3	Slow/Stop Signs

BEMIDJI

PLM LEAK TRAILER #292

SKIMMERS	
2	Elastec 8' Skimmers
1	4' Elastec Skimmer
1	Elastec Mini Max Skimmer
1	Manta Ray Skimmer
1	Skim Pack Skimmer
MISCELLANEOUS	
1	Bolt Cutter
1	Sledge Hammer
1	Windsock
1	First-Aid Kit
1	Stretcher
1	Post Pounder
4	20' Lengths of Chain
12	Fence Posts
1	Roll Fencing
1	1800 Gal. Port-a-Tank and Liner
9	Pairs Insulated Rubber Gloves
18	Pairs of Rubber Gloves
6	Rain Coats & Rain Bibs
7	Screw Anchors
1	Flashing Amber Light
1	Spot Light
12	Boom Connectors
6	Pairs-Hip Boots
10	Pairs-Chest Waders
1	Danger Sign
1	No Smoking Sign
20	Ice Picks
1	Fire Blanket
1	Reel of Blue Rope, 500' in 25' Sections With Safety Snaps
1	Reel of Yellow Rope 500' in 50' Sections With Safety Snaps
1	Reel of Green Rope 500' in 100' Sections With Safety Snaps
2	Reels of Orange Rope 750' in 150' Sections with Safety Snaps
2	2"-3" Kamlock Fitting, Male-Female Thread



BEMIDJI PLM LEAK TRAILER #292 cont.

QTY	DESCRIPTION
2	2"-3" Kamlock Fitting, Female-Female Thread
2	2"-3" Kamlock Adapters
2	2" Kamlock Fittings Male Adapter Female Thread
2	2" Kamlock Fittings Female Adapter Female Thread
3	Sets of Skimmer Hose
2	30# Fire Guns (Dry Chemical)
11	Life Jackets
11	Hose Floats
2	Big Aluminum Anchors
5	3" Diameter Floating Hose 10' Long Each
1	3" x 35' Long Hose
1	Axe
4	Shovels
2	2" x 8" x 12' Lumber
7	2" x 4" x 12' Lumber
1	Environment Back Pack

SUPERIOR PLM ER INVENTORY

PLM BOOM TRAILER INVENTORY

6	Bundles of Sorbent Pads (100/Bundle)
250'	Sorbent Boom
100'	Containment Boom - Small
2100'	Containment Boom - Open Water
700'	Floating Containment Boom w/ Quick Latch Couplings
5	Boom Tow Bridles
4	Fabricated Disk Anchors
4	Danforth Anchors
4	15' Lengths ½" Anchor Chain
29	Assorted Kamlock Fittings
1	Skim-Pak Skimmer
1	Manta Ray Skimmer
10	Pair Steel-Toed Chest Waders
4	Pair Neoprene Gloves
6	USCG Approved Life Vests
4	Shovels
1	Sledge Hammer
1	Bolt Cutter
2	Axe
10	Steel Fence Posts
2	Drive in Fence Post Anchors
5	Screw in Fence Post Anchors
1	Megaphone
1	12 volt Handheld Spotlight
1	Amber 12 Volt Strobe Light
	Assorted Fencing / Chicken Wire
	Assorted 2 x 4 x 12 2 x 6 x 12 Lumber



SUPERIOR

PLM MISCELLANEOUS

QTY	DESCRIPTION
5	12" Orange Round Water Buoys w/Weights
2	Towable Bridles w/Floats
3	Re-Q-Disc Throwable Floatation w/Rope
11	Rescue Harnesses
200	Ft. Rope
2	3" Gas Pumps
7	2" Gas Pumps
1	2" Diaphragm Pump
1	3" Air Pump
3	3" Hydraulic Pumps
2	3" Air Diaphragm Pumps
360	Ft. 2" Hose
20	Ft. Floatable 2" Hose
400	Ft. 3" Hose
20	Ft. Floatable 3" Hose
420	Ft. 4" Hose
450	Ft. 6" Hose
5	Personal Floatation Devices

SUPERIOR

PLM LEAK TRAILER

7	Bundles Sorbent Pads (100/Bundle)
1	Roll Sorbent Pads
10	Bundles of Sorbent Boom (40'/Bundle)
5	Bags Absorbent Cellulose
150'	Floating Containment Boom
50'	Containment Boom - Small
4	8' Boom Deflectors
1	4' Oil Skimmer
1	8' Oil Skimmer
4	Fire Blankets
2	Wind Socks
7	Pair Insulated Rubber Gloves
13	Pair Rubber NGL Sleeves
15	NGL Aprons
5	Face Shields
6	Nomex Coveralls
1	First-Aid Kit
1	Stretcher
4	Road Barricades
4	Stop / Slow Signs
12	Safety Vests
9	Rolls Caution Tape
12	Amber Flashing Light
17	Safety Cones (Orange)



PLM LEAK TRAILER cont.

QTY	DESCRIPTION
12	Fence Posts
1	Roll Plastic Fencing
2	Trouble Lights
1	12 Volt Spotlight
1	Box Wildlife Deterrent
1	3" Air Operated Diaphragm Pump
1	3" Hydraulic Pump
3	2" Hard Suction / Discharge Hose
1	2" Discharge Hose
1	2" Female to 3" Male Kamlock Fitting
1	3" Male to 2" Male Kamlock Fitting
4	Heavy Lanyards
2	Miscellaneous Lengths of Heavy Rope
1	Grounding Rod and Cable
1	Bolt Cutter
4	Shovels
1	Axe
1	Roll of Heavy Plastic
2	Rolls of Chicken Wire
1	Winch

IRONWOOD PLM ER INVENTORY

PLM MISCELLANEOUS

20	Bundles Sorbent Boom
2	150,000 BTU Heaters
1	Quick Tent
1	Power Ice Auger
1	Hand Auger
1	3500 Watt Generator
1	4000 Watt Generator
2	3" Pumps
3	Bundles Sorbent Pads
3	3" FR Hoses
5	3" Flexible Discharge Hoses
7	2" Flexible Discharge Hoses
20	3" Rigid Hoses
10	2" Rigid Hoses
25	Rolls Orange Fence
2	2" Multi-Quip Pumps
10	Road Barricades
2	Portable Lights
1	Light Plant
4	Scott Air Paks
500'	Floating Oil Boom w/Quick Latch Couplings (12" Skirt)



IRONWOOD PLM MISCELLANEOUS cont.

QTY	DESCRIPTION
8	12" Boom Tow Bridles
5	Sorbent Boom 6" X 10' 4/Bag- 200'
2	Boom Connectors
5	Bales Sorbent Pads 17" X 19" 100/Bale
2	Bales Sorbent Boom 4/Bale
6	Anchors-15 # Danforth
4	Anchors- Fabricated Disk
5	Buoys
2	Air Power Units
1	4' Elastec Drum Skimmer
2	30' Skimmer Hoses
2	3" Metal 45° Fittings
1	3" Air Operated Diaphragm Pump
5	3" X 10' Floating Discharge Hose
1	25' Discharge Hose
1	50' X 2" Discharge Hose
2	Hose Floats
1	1800 Gal. Port-a-Tank and Liner
1	Lot Ropes w/Connectors
6	Safety Belts
2	Safety Belts w/Tail Lines
1	Axe
1	Sledge Hammer
4	Shovels
9	Fire Retardant Rain Gear
10	Body Harness'
1	12 Volt Strobe Light
1	12 Volt Hand Held Spot Light
12	Life Vests
1	Bolt Cutter
1	Lot Rubber Gloves
10	Coveralls
2	Wind Socks
5	Screw in Fence Post Anchors
12	Fence Posts
1	Post Driver
1	Post Hole Digger
1	Hacksaw
2	Hammers
IRONWOOD	

PLM BOOM TRAILER INVENTORY

1	Assorted Lumber and Nails
1	1000 Watt Honda Generator
1	Husky Power Saw
1	STIHL Power Saw



IRONWOOD PLM BOOM TRAILER INVENTORY cont.

QTY	DESCRIPTION
1	Lot Bar Oil
1	Stihl Leaf Blower
1	Warn Electric Winch
1	First-Aid Kit
1	NGL Flare Gun
1	Stretcher
3	Wool Blankets
1	Megaphone
3	Pitch Forks
1	50' Drop Cord
1	Fire Blanket
2	Danger Signs
1	Incident Command Chart
1	Case Garbage Bags
1	Bale Rags
1	Lot Tape (Caution and Reflective)
10	Hip and Chest Waders
1	Lot Ice Cleats
3	Pike Poles
19	Picks of Life

ESCANABA PLM ER INVENTORY

500'	Floating Oil Boom w/Quick Latch Couplings (6" Skirt on Boom)
6	50' Lengths of 4" Boom w/ Couplers and Towing Bridles
2	Boom Tow Bridle
2	Oil Sorbent SPC Sweep
6	Sorbent Boom 6"x10' 4/Bag - 240'
1	Sorbent Boom 5"x10' 4/Bag - 40'
7	Bales of Sorbent Pads 17"x19" 100/Bale
2	Bales of Sorbent Boom 4/Bale
4	Anchors -15# -Danforth
4	Anchors - Fabricated Disc.
4	Buoys
1	Skim-Pak Weir Skimmer w/ Discharge+Hose+Wand Extension+Screen
1	Manta-Ray Floating Suction Head
1	Elastec Power Unit Motor Manual + Tools
2	3" Metal 45s for Pipe for Skimmer
1	3" Air Operated Diaphragm Pump with 3" Kamlocks
2	15' x 3" Floating Discharge Hose
4	15' x 3" Rigid Suction/Discharge Hose
1	3" Discharge Hose
2	50' x 2" Discharge Hose
2	2" Hose Floats



PLM BOOM TRAILER cont.

QTY	DESCRIPTION
1	1800 Gal. Port-a-Tank and Liner
1	50' ½" Rope with Quick Disconnect Fitting
5	25' ½" Rope with Quick Disconnect Fitting
1	Roll with ½" Plastic Rope (¼ roll) (Yellow)
1	¾" Rope
3	25' Ropes for Body Harness
1	Axe
1	Sledge Hammer
4	Shovels
5	Reflective Vests
2	Body Harness
1	Amber 12-Volt Strobe Light
1	Pair of Snorkel Rubber Gloves
1	12-Volt Hand-Held Spotlight
5	Life Vest Type 2
2	Life Vest Type 1
1	Bolt Cutter
9	Pairs of Neoprene Rubber Gloves Long Sleeves
9	Deluxe Safety Vest
1	Roll of Orange Fence
1	Wind Sock
5	Screw in Fence Post Anchors
21	Fence Post
2	Rolls of Fence (Chicken Wire)
2	Rolls of Bailing Wire
4	12' 2x6s
4	12' 2x4s
1	16' Probe
2	3" Male to Female Threads
2	3" Female to Female Threads
4	3" Male to Male Threads
4	3" Female to 2" Male Adaptor
2	3" Male to 2" Female Adaptor
4	2" Male to Male Threads
2	2" Male to Female Threads
2	2" Female to Female Threads

*No Change 2011

ESCANABA

MISCELLANEOUS EMERGENCY RESPONSE EQUIPMENT

1	Power Unit for Skimmers
1	4' Drum Skimmer
1	8' Drum Skimmer
1	20' Section of 3" Suction Hose
2	20' Section of 2" Suction Hose
3	50' Sections of 2" Discharge Hose
1	3" Discharge Hose
4	Hose Floats for 3" Hose



MISCELLANEOUS EMERGENCY RESPONSE EQUIPMENT cont.

QTY	DESCRIPTION
1	3500 Watt Generator
2	36" Chainsaw for Ice Slotting
4	1 Gal. Containers of Bar Oil
1	8" Power Ice Auger
1	6" Hand Ice Auger
1	Backpack Blower
18	Ice Picks of Life
1	Portable 12-Volt 3500# Winch
9	Rolls of Silt Fence
14	Bales of Sorbent Pads
2	12' Aluminum Pike Poles
1	Bale of Sand Bags
1	Roll of Plastic
5	Pullover Harnesses
1	18" Lund Boat with 50hp Motor & Trailer
2	Oars
6	Life Vests
2	Anchors
1	Telescoping Gaff Hook
1	Hand Held Spot Light
1	Tow Bridle
1	2" Mud Sucker Pump
2	3" Trash Pumps
2	2" Trash Pumps
1	4" Hydraulic Pump
2	2" Electric Pumps

*No Change 2011

ESCANABA

PLM LEAK TRAILER (VAN)

4	25' Wire Rope Slings
4	12' Blue Slings
4	10' Red Slings
4	8' Red Slings
2	6' Red Slings
6	10' Yellow Slings
2	8' Yellow Slings
2	4' Yellow Slings
4	12' Wire Slings with Hooks
2	20' Extension Ladders
1	Pitch Fork
6	Spade Shovels
1	Post Hole Digger
2	Rakes
2	Axes
1	Pick Axe
5	Assorted Pipe Wrenches



PLM LEAK TRAILER (VAN) cont.

QTY	DESCRIPTION
3	12' Crescent Wrenches
1	Metal Probe with Extension
2	150 # Fire Extinguishers
4	30 # Fire Extinguishers
1	Air Spade
1	Jack Hammer/Assorted Bits
4	Journal Jacks with Caps
1	Post Pounder
1	12# Sledge Hammer
2	Tent Pole Bands with Poles
1	36" Bolt Cutter
1	1 Ton Chainfall
1	3 Ton Com-a-Long
4	Bales of Sorbent Pads -
2	Scott Air Paks
1	Roll of Visqueen Plastic
24	Wooden Lathe
7	Face Shields with Spare Shields
1	Emergency Back Board
1	Air Lifting Bag
2	Bundles of Silt Screen
1	Air Operated Air Mover
1	Loud Speaker
4	½" 20 ft. Jacking Chains
6	Gas Cans
2	20# Propane Tanks
2	Empty 5 Gal. Pails
	Motor Oil
	Chainsaw Bar and Chain Oil
	Assortment of Alkaline Batteries
	Pocket Penetrometer Soil Tester
	Tool Kit for Chain Saws
	Assortment of Chains and Locks
4	Cans of Marking Paint
	Assorted Wire Brushes
2	Rolls of Duct Tape
	Garbage Bags
3	Rolls of Caution Tape(Yellow)
	Numerous Assorted Kamlock Fittings (Various Sizes and Threads)
	Assorted Pipe Plugs (Various Sizes)
	Assorted Pipe Adapters (Various Sizes)
	Assorted Pipe Reducers (Various Sizes)
1	25' 110 Volt Trouble Light
1	20 oz. Stanley Claw Hammer



PLM LEAK TRAILER (VAN) cont.

QTY	DESCRIPTION
4	No Smoking Signs (Orange and Yellow)
2	48 Quart Coolers
1	Electric Air Mover
10	Flashing Emergency Lights (Orange)
34	6 Volt Batteries
20	Pair of Long Rubber Gloves
9	Pair of Short Rubber Gloves
18	Orange Vests
7	Pair of Yellow Rubber Sleeves
4	Windsocks
4	Stop Signs
2	Fire Blankets
1	12-Volt Spot Light
10	Sets of Rain Gear
4	Safety Belts
3	Safety Belt Tag Lines
4	Pair of Lineman Gloves
3	Hard Hats
8	Pair of Blue Nomex Coveralls
5	Pair of Red Nomex Coveralls
1	5 Gal. Water Cooler
1	3 Gal. Water Cooler
1	Coffee Pot
10	Gal. of Purple K-Fire Extinguishing Agent
1	1000 Watt Generator
200	Sand Bags
2	Drain Tubs
2	Extra Air Hose
	Assorted Tent Poles
	Assorted Fence Posts
2	2" Air Pumps for Oil Recovery
2	3" Air Pumps for Oil Recovery

*No Change 2011



STATION RESPONSE EQUIPMENT GUIDELINES

Enbridge retains the suggested minimum response materials at each pump station along our pipeline system. This equipment is intended for minor spills or short term containment until additional resources arrive.

(These quantities are suggested minimums – each location is encouraged to add or modify this list based on needs specific to that location).

- 200 feet – 5" Sorbent Boom
- 200 feet – 8" Sorbent Boom
- 2 – Bales Sorbent Pads (17' x19" x 3/16") minimum 100 pads per bale
- 2 – Bales Sorbent Pads (17' x19" x 3/8") minimum 100 pads per bale
- 5 – Bales Sorbent Roll (38" x 144' x 3/8")

MANISTIQUE BOOM TRAILER INVENTORY	
QTY	DESCRIPTION
400'	Floating Oil Boom w/Quick Latch Coupling (6" skirt on boom)
4	BoomTow Bridle
5	Sorbent Boom Bales 8"x10' 4/Bale
5	Sorbent Boom Bales 5"x10' 4/Bale
1	Sorbent Pads 17"x19" 200/Bale
1	Sorbent Pads 17"x19" 100/Bale
1	½" Rope 100'
4	½" Ropes 25' with Hooks
6	Shovels
1	Sledge Hammer
2	Claw Hammer
25	Fence Post
3	Row of Fence (Chicken Wire)
1	Culvert
5#	16 Penny Nails
1	Windsock & Pole
2	Row of Baling Wire
2	Flashlights/Batteries
2	Life Jackets
2	Chest Waders (Size 10&12)
1	Electrician Pliers
1	Garbage Bags (Box of 100)
1	Safety Barricade Tape (Yellow)
1	Tin Snips
1	Hacksaw with 6 Blades
2	Reflective Vests
2	Permalon 40'x100' ply 210
6	Neoprene Rubber Gloves
2	Hip Boots (Size 10&12)
1	Telescoping Gaff Hook
10	12' 2X4s
10	12' 2x6s

*No Change 2011



GOULD CITY STATION

BOOM TRAILER INVENTORY

QTY	DESCRIPTION
300'	Floating Oil Boom w/Quick Latch Coupling (6" Skirt on Boom)
4	Boom Tow Bridle
5	Sorbent Boom Bales 8"x10' 4/Bale
5	Sorbent Boom Bales 5"x10' 4/Bale
1	Sorbent Pads 17"x19" 200/Bale
1	Sorbent Pads 17"x19" 100/Bale
1	½" Rope 100'
4	½" Ropes 25' with Hooks
6	Shovels
1	Rake
1	Sledge Hammer
2	Claw Hammer
25	Fence Post
1	Culvert
5#	16 Penny Nails
1	Windsock & Pole
2	Flashlight/Batteries
2	Row of Baling Wire
2	Life Jackets
2	Chest Waders (Size 10&12)
1	Electrician Pliers
1	Garbage Bags (Box of 100)
1	Safety Barricade Tape (Yellow)
1	Tin Snip
1	Hacksaw with 6 Blades
2	Reflective Vests
2	Permalon 40'x100' ply 210
6	Neoprene Rubber Gloves
2	Hip Boots (Size 10&12)
1	Telescoping Gaff Hook
10	12' 2x4s
10	12' 2x6s

*No Change 2011

ST. IGNACE VALVE YARD

BOOM TRAILER INVENTORY

1000'	Floating Oil Boom w/Quick Latch Couplings - 16" Skirt on Boom
1	BoomTow Bridle
5	Anchors-with Chains & Rope
5	Buoys Markers with Lights & Ropes & Batteries
2	Bales 40' each 6"x10" Sorbent Boom
2	Bales 40' each 8"x10" Sorbent Boom
1	Bales oil Sorbent Sweep 17"x100"
1 1/2	Bales of Sorbent Pads 17"x18" 100/Bale
1	Bales of Sorbent Rolls 38"x144"



ST. IGNACE BOOM TRAILER INVENTORY cont.

QTY	DESCRIPTION
1	3" Air Operator Diaphragm Pump c/w 3" Kamlocks
1	Generator 2500 Watts
4	Life Jackets
1	Gaff Hook
4	Pairs of Hip Boots 2 EA.(Size 10 & 12)
4	Packs of Slip Protection for Boots
1	Fast Tank+1 Fast Tank Saddle Assembly
5	Rain Pants
2	Rain Jackets
1	Quick Tank
1	Cover for Tank
4	Shovels
1	Sledge Hammer
1	Hammer
12	Fence Posts
1	Bag of Fence Ties/ bag of Penny Nails

*No Change 2011

MACKINAC STATION

BOOM TRAILER

1000'	Floating Oil Boom w/Quick Latch Couplings (16" Skirt on Boom)
1	Boom Tow Bridle
5	Anchors-with Chains & Rope
5	Buoys Markers with Lights, Ropes & Batteries
2	Bales 40' each 6"x10" Sorbent Boom
2	Bales 40' each 8"x10" Sorbent Boom
2	Bales Oil Sorbent Sweep 17"x100"
2	Bales of Sorbent Pads 17"x18" 100/Bale
1	Bales of Sorbent Pads 100/Bale 17"x19"
2	Bales of Sorbent Rolls 38"x144"
1	3" Air Operator Diaphragm Pump c/w 3" Kamlocks
1	Generator 2500 Watts
4	Life Jackets
1	Gaff Hook
4	Pairs of Hip Boots 2 EA.(Size 10 & 12)
4	Packs of Slip Protection for Boots
1	Fast Tank + 1 Fast Tank Saddle Assembly
5	Rain Pants
2	Rain Jackets
1	Quick Tank
1	Cover for Tank
4	Shovels
1	Sledge Hammer
1	Hammer
12	Fence posts
2	Rolls of Baling Wire



BOOM TRAILER cont.

QTY	DESCRIPTION
1	Bag of Fence Ties
1	Bag of 16 Penny Nails

*No Change 2011

INDIAN RIVER STATION

BOOM TRAILER INVENTORY

400'	Floating Oil Boom w/Quick Latch Coupling (6" Skirt on Boom)
4	Boom Tow Bridle
5	Sorbent Boom Bales 8"x10' 4/Bale
5	Sorbent Boom Bales 5"x10' 4/Bale
1	Sorbent Pads 17"x19" 200/Bale
1	Sorbent pads 17"x19" 100/Bale
4	1/2" Rope 100'
1	1/2" Ropes 25' with Hooks
6	Shovels
1	Rake
1	Sledge Hammer
2	Claw Hammer
25	Fence Post
3	Row of Fence (Chicken Wire)
1	Culvert
5#	16 Penny Nails
1	Windsock & Pole
2	Row of Baling Wire
2	Flashlight/Batteries
2	Life Jackets
1	Chest Waders (Size 10-12)
1	Electrician Pliers
1	Garbage Bags (Box of 100)
1	Safety Barricade Tape (Yellow)
1	Tin Snip
2	Hacksaw with 6 Blades
2	Reflective Vests
6	Permalon 40'x100' ply 210
2	Neoprene Rubber Gloves
1	Hip Boots (Size 10-12)
10	Telescoping Gaff Hook
10	12' 2x4s
10	12' 2x6s

*No Change 2011



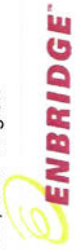
ENBRIDGE ENERGY WINTER SPILL EMERGENCY RESPONSE EQUIPMENT

WINTER EQUIPMENT	Thief River Falls	Bemidji	Superior	Ironwood	Escanaba
Backpack Leaf Blowers	1	2	2	1	1
Portable Heaters - All	2	2	2	2	2
Power Ice Augers	1	1	1	1	1
Chainsaws	2	2	2	2	1
Winches	1	1	1	1	1
Containment Boom		180'			
50' Lengths Mini Boom	3	6	3	6	8
Tow Bridles	6	0	3	6	16
Pike Poles	3	1	0	2	3
Pick-of-Life	12	24	5	10	10
HONDA 3500w - 10000w Generator	1	1	1	1	1
Hydraulic Submersible Pumps	2	1	3	1	1
1 lot Aluminum Camlock Fittings (2", 3")	1	2	1	1	1
25' Length 2" Low Temp Hose	2	2	2	2	2
LWT Hose Floats for 3" Hose	0	0	0	2	0
Hand Ice Augers w/Extension	1	0	1	1	1
Hazardous Location Trouble Light	4	4	5	4	3
Skimmers		3			
Ice cleats	6	0	2	12	0
Shelter	0	1	1	1	0

Winter Equipment: Enbridge maintains this equipment for winter/cold weather spill response. It is staged at each Pipeline Maintenance Facility. Due to the seasonal nature of this equipment, it may not be stored in existing response trailers. The Pipeline Supervisor is responsible for the facility will ensure that the equipment is maintained, inventoried and accessible in the event of a winter spill incident.



OCTOBER 2011 PRIMARY WATER RECOVERY EQUIPMENT	Thief River Falls PLM	Bemidji PLM	Superior PLM	Ironwood PLM	Escanaba PLM	Manistique Station	Gould City Station	Straits of Mackinac	Indian River
Boom & Absorbents									
Containment Boom – River (feet)	3,000	250	850	500	500	400	300	1000	400
Containment Boom – Open Water (feet)		500	2100					2000	
Containment Boom – Small (feet)		450	550	500	300				
Sorbent Boom (feet)		640	250	200	280	400	400	160	400
Sorbent Pads		3,400	1300	800	700	300	300	300	300
Sorbent Sweep/Rolls (bales)		2	1	2	6	2		8	
Skimmers									
3' Drum Skimmer	1								
4' Drum Skimmer		1	1	1	1				
8' Drum Skimmer	2	4	1		1				
Mini Max Skimmer		1							
Skimmer Power Pak					1				
Manta Ray		1	1						
Skim Pak		1	1						
Pumps									
2" Air Operated + Hoses					2				
3" Air Operated + Hoses		2	1	1	2			1	
2" Trash Pump + Hoses		1			2				
3" Trash Pump + Hoses		2	3	2	3				
3" Hydraulic Pump + Hoses		3	4						
4" Hydraulic Pump + Hoses					1				
2" Electric Pumps		12			2				



OCTOBER 2011 PRIMARY WATER RECOVERY EQUIPMENT	Thief River Falls PLM	Bemidji PLM	Superior PLM	Ironwood PLM	Escanaba PLM	Manistique Station	Gould City Station	Straits of Mackinac	Indian River
Storage									
Vacuum Truck – 1500 - 1800 Gal.	1	1	1	1	1				
Portable Storage Tanks (1800 gal)		1		1	1				
Tankage Storage		8.7 million barrels at Superior WI 1.2 million barrels at Clearbrook, MN				5,000 barrels at Gould City MI			
Boats & Motors									
18' Lund w/motor & equipment									
20' Lund Alaskan w/motor & equipment									
12' John Boat									
20' Aqua Deck w/inboard & equipment									
Response Trailers									
Leak Trailers (van)	1	2	1		1				
Boom Trailer	1	1	1	1	1	1	1	1	1
Command Post Trailer	1								
Decontamination/Command Trailer									



Twin Ports Mutual Aid Group

The Twin Ports Petroleum Mutual Aid Group (TPPMAG) was formed in 1992 to provide for mutual assistance and cooperation in the control of oil spill emergencies occurring in the general area of Superior, WI and Duluth, MN. A key component of this agreement is the joint ownership of a fully equipped response trailer. The City of Superior, WI Fire Department agrees to store the trailer and transport it to emergency response sites as designated by the member companies and at reasonable cost to the user. The Group agrees to give the City of Superior full authority to use the trailer, equipment and materials as it deems appropriate.

Member Companies include:

- Enbridge Energy
- Murphy Oil USA, Inc. Superior Refinery
- Conoco Inc.
- Magellan Pipeline
- Murphy Oil USA, Inc Marine Terminal

FOR EMERGENCY DELIVERY OF THE RESPONSE TRAILER

Call the Superior Fire Department at:

715-394-0227 (normal business hours)

715-394-0231 (after hours)



TWIN PORTS MUTUAL AID GROUP EMERGENCY RESPONSE INVENTORY

QTY	DESCRIPTION
1	Spare Trailer Tire
3	18 # Boxes Fiberperl Absorbent
2	Rolls Absorbent - 144'
4	Boxes Tharco Absorbent Pellets
5	Bundles Absorbent Pads - 100 / bundle
2	Anchors - 43 #
1	Axe
5	50' Sections of Containment Boom
1	Section of 25' Containment Boom
1	Portable Generator
1	100' 12 Gauge Extension Cord
11	Steel Fence Posts
1	Fence Post Driver
2	Fire Extinguishers 30# (Dry Chemical) (2005 -Due for TEST)
1	First- Aid Kit
1	Flashlight (No Batteries)
1	Gas Can for Generator
1	Plastic Boat Gas Tank
1	Can Adhesive Glue
	Miscellaneous Hardware
3	Pair Steel Toed Hip Waders
4	Life Jackets
2	Portable Light Towers
1	Portable Light
6	Non-Conducting Pads
2	Wooden Boat Oars
1	25 Horsepower Outboard Motor
2	Pitchforks
1	Box Plastic Sheeting
2	Metal Rakes
1	Leaf Rake
12	Various Lengths of Nylon Rope
1	50' Length of Nylon Rope
1	Spool of Nylon Rope
2	Scoop Shovels
3	Spade Shovels
1	Square shovel
1	12# Sledge Hammer
4	Boxes Sorbaid
1	12-Volt 100,000 Candlepower Handheld Spotlight



TWIN PORTS MUTUAL AID GROUP EMERGENCY RESPONSE INVENTORY cont.

QTY	DESCRIPTION
24	Tent Stakes
1	Tool Box with Assorted Hand Tools
1	Bag Gloves
1	Bag Response Suits
1	16' Alumaweld Boat
	Tow Bridles
	Water Buoys
	Barricade Tape – (Yellow "Caution" & Red "Danger")
10/31/11	



SPECIALTY CONTRACTOR CONTACTS

GARNER ENVIRONMENTAL SERVICES INC.

Garner Environmental Services is a full service environmental and emergency response company and a classified **OSRO** (Oil Spill Response Organization) based near Houston, TX. Numerous locations and away teams, allows response in a timely manner to any situation upon notification.

Enbridge has contracted with Garner to provide personnel, equipment, and expertise in the event of a **WORST-CASE DISCHARGE** situation where timeliness is critical and additional resources are needed. The Master Service Agreement is located in the Superior Regional Office. Copies of inventory and equipment lists can be obtained through the Region Offices.

A list of Garner Environmental Services' emergency response equipment can be found at: [http://www.garner-es.com/pdf/Response Equipment List 2009.pdf](http://www.garner-es.com/pdf/Response_Equipment_List_2009.pdf)

Garner should only be contacted from the Qualified Individual (QI) level or higher. The QI may wish to confer with senior management or the crisis management team prior to enlisting Garner's services.

**Garner Environmental Services Inc.
1717 W 13th St.
Deer Park, TX 77536
(281) 930-1200
1-800-424-1716 (24 hrs.)**

BAY WEST

Bay West is an established Coast Guard responding out of Minneapolis, Minnesota, that provides 24-hour emergency spill response. Their services include cleanup, removal and the remediation of oil spill sites as well as environmental investigations and assessments.

Bay West has an extensive inventory of emergency response equipment, HAZMAT and HAZWOPER trained personnel, and an experienced support staff to respond to various types of spill scenarios.

Enbridge has retained Bay West by means of a Master Service Agreement to supplement internal resources in the event of a pipeline incident. Copies of their inventory and equipment lists can be obtained through Enbridge Energy's Superior Regional Office.

**Bay West
5 Empire Drive
St. Paul, MN 55103
(651) 291-0456
1-800-279-0456 (24 hrs.)
www.baywest.com**



CANADIAN CROSS BORDER EMERGENCY RESPONSE EQUIPMENT

Enbridge recognizes that there may be circumstances where additional resources are required for emergency response in our operating areas along the U.S / Canadian border. In these situations, agreements have been reached to allow equipment and manpower to cross the border to respond. These agreements have been discussed and cleared with both the U.S. and Canadian Customs offices. Equipment and manpower lists have been provided to these entities as a reference in the event a cross border crossing becomes necessary.

This Canadian area is included in this cross border agreement with the Superior Region:

- Gretna, Manitoba

Contacts:

Eldon Strachan (PLM Coordinator/Central Region)

Office: (204) 327-6660

Cell: (204) 324-7006

Larry Doherty (Area Sup/Operations/Gretna)

Office: (204) 327-6611

Cell: (204) 324-3151

Lawrence Michalchuk (Coord/Maint. Services/Gretna)

Office: (204) 327-6447

Cell: (204) 324-3991

INVENTORY LISTS ATTACHED

GRETNA MOBILE EQUIPMENT EMERGENCY RESPONSE INVENTORY	
QTY	DESCRIPTION
1	½ Ton 4X4 Pickup Truck
1	1-Ton 4X4 Extend-a-Cab
1	Picker Truck-Fassi 17 ton
1	Welding 1-Ton Truck
1	¾ Ton 4 X 4 Pickup Truck
1	CM-1 Jet Boat
1	GF -1 Jet Boat
1	Boat Trailer
1	Boat Trailer
1	Oil Spill Trailer
1	Emergency Equipment Trailer
1	Lighting Plant
1	Arne's Tandem Trailer
1	Cat Skid Steer
1	Skid Steer Trailer



**GRETNA EMERGENCY RESPONSE TRAILER INVENTORY-
UNIT 38903**

QTY	DESCRIPTION
1	2003 Chevrolet 1500 Silverado Extended Cab(VIN.# 2GCEK19T531277318)
1	Motorola MCX100 Mobile Telephone (Serial #484PKY4434)
1	Motorola MCX100 Private Company Radio (Serial #428PQS5142)
1	Motorola Cellular Plus Telephone (Serial #8189B0632)
1	Flare Pistol
1	Box of Flares for Flare Pistol.
1	BX-82 Gas Detector (Serial #GX-1108-HSD)
1	Safe Work Permit Book
1	District #2 System Map Atlas
1	Pembina Valley Telephone Book
1	100' Tape Measure
1	50' Tape Measure
1	16' Tape Measure
1	25" Tape Measure
1	Western/Central Emergency Response Directory
1	Nylon Tow Rope / Clevises
2	Flashlights. (Lantern Style)
2	Fire Blankets
1	First Aid Kit
1	District #2 Route Sheets
1	Set of Booster Cables
1	Box of Ear Plugs
1	Set of Binoculars
1	Hardhat
1	Pressure Gauge- Serial #801
1	Container of Safety Supplies such as Gloves, Safety Glasses,
2	Pairs of Safety Glasses
1	Pipeline Information Book
1	Landowner Information Book
1	Regina Telephone Book
1	Manitoba Telephone Book
1	Emergency Border Crossing Manual
1	Oil Spill Control Point Book
1	Western Operations Emergency Call Down List Booklet
2	Lakehead Safe Work Permit Books
1	Lens Cleaning Kit
1	Westward Travel Tool Kit
1	3/8" Socket Set / Sockets
1	Box of Emergency Road Flares
1	Spotlight
1	Air Horn
1	Yellow Emergency Flashing Light



EMERGENCY RESPONSE TRAILER INVENTORY- UNIT 38903 cont.

QTY	DESCRIPTION
1	Laerdal Pocket Face Mark
1	5 # General Fire Extinguisher (Serial #H648373C)
1	Flange Installation Quality Control Form
4	Pairs of Work Gloves

**GRETNA EMERGENCY RESPONSE TRAILER INVENTORY-
UNIT A351**

QTY	DESCRIPTION
1	2000 Ford F-350 1 Ton Truck (VIN # 1FDWX37F7YEC63078)
1	Motorola 2-way Radio (Serial #428ATUT161)
1	TMX Gas Detector with Spare Battery (Serial # 9407075-293)
1	TMX Charger (Serial # 941Z083-006)
1	Flare Pistol (Serial # 66823)
1	Box (8) Flare Cartridges
1	Motorola Permanent CellP
1	External Rotating Amber Light
1	36" Aluminum Pipe Wrench
2	24" Aluminum Pipe Wrenches
2	18" Aluminum Pipe Wrenches
2	12" Aluminum Pipe Wrenches
2	Ball Peen Hammers
1	Claw Hammer
1	3/8" Drive Socket Set
1	Set Metric Open-End Wrenches (6 mm – 24mm)
1	Set Standard Open-End Wrenches (1/4" – 1 1/4")
1	1/2" Drive Socket Set
2	Pry Bars
1	Set (3) Rolling Pry Bars
2	10" Vise Grips
1	12" Chain Vise Grip
3	10" Pliers
2	7" Pliers
2	7" Needle Nose Pliers
1	7" Wire Cutter
1	Tin Snip
1	Set Internal and External Snap Ring Pliers
4	Phillips Screwdrivers
3	Robertson Screwdrivers
5	Flat Screwdrivers
2	Sets Folding Allan Wrenches
1	Set Regular Allan Wrenches
1	15" Crescent Wrench
1	12" Crescent Wrench
1	10" Crescent Wrench



UNIT A351 cont.

QTY	DESCRIPTION
1	8" Crescent Wrench
1	6" Crescent Wrench
1	Hack Saw (2 spare Blades)
4	Half Bastard Round Files
3	Flat Files
3	Rat Tail Files
Assortment of:	Banana Knives Electrical Tape Teflon Tape
	Wire Brushes Tape Measures Awls
	Utility Knives Tube Pipe Sealant
1	Roll Chalk-line
1	Battery Post Cleaner
1	Utility Magnet
1	Utility Claw
1	5 Gal. Gas Can 1 – 5-Gal. Diesel Can
1	12 # Sledge
2	Spades
1	District 2 System Map Atlas
1	District 2 Route Map
1	District 2 Landowners Book
1	Emergency Preparedness Book
1	Local Pipeline Information Book
1	Telephone Book
4	Safety Shields
2	Safety Shields
2	Safety Shields Hardware
1	Box CAA Survival Kit
1	Full Body Harness.
2	Shock Absorbers
2	Lanyards
2	Tag Line
2	Lock-out Locks
2	Lock-out Clevises
2	Lengths Lock- out Chain
1	Pair Gloves
1	Snap-in Tool Box
4	Pressure Gauges
	Assortment of Air Fittings
1	Micro Cassette Recorder
2	Reflective Vests
1	Skid Pick
1	Pick
1	Probe
1	Tag Line
1	3/8" Tie-down Chain
1	3/8" Load Boomer



UNIT A351 cont.

QTY	DESCRIPTION
1	2' Level
1	5" Vent Hose
	Rags
2	Liters Motor Oil
2	Cans Penetrating Oil
1	2 Gal. - Antifreeze
2	2" Ratchet Tie-downs
2	Hydraulic Journal Jacks
1	Emerpac Hydraulic Jack with 4" Head
1	3/4" Socket Set
2	Pig Tails
2	Probe Lite Stands
2	Flood Lights
4	Clear Deck Lights
1	1 1/2- Ton Come-Along
1	Rear Deck Box (Assorted Pipe Fittings)
1	Rear Deck Box (Tow Rope and Booster Cables)
1	Wisk Broom
1	100' Tapes
1	Ice Scraper
2	Explosion Proof Flashlights
1	First-Aid Kit
2	6' x 5' Fire Blanket
1	Spotlight
1	Box of Emergency Road Flares
1	Safe Work Permit Book
1	Flange Installation Quality Control Form
GRETNA EMERGENCY RESPONSE INVENTORY- UNIT 35203	
1	2004 Kenworth T 800 Tandem (VIN # 1NKDLUOX74J973128)
1	2003 Fassi F530 XP Hydraulic Crane with Wireless Remote Control.
1	Motorola 2- Way Radio / Accessories
1	Motorola 650 Flip Cell Phone/ Accessories
1	Industrial Scientific Gas Detector (Serial # 9407075-292)
1	Windsock
1	Set of Roadside Flares
4	RED 30 minute Emergency Flares
4	Wheel Chocks
1	Full Body Harness
1	Fall Arrest Lanyard
1	Shock Absorber
1	Survival Kit
1	Flare Gun (Serial # 66816)



UNIT 35203 cont.

QTY	DESCRIPTION
1	Box Flares (10)
1	6 Volt Flashlight
1	Fire Blanket
2	Fire Extinguishers 30 # (Ansul) (Serial # KW 514283 , Serial # KW 514284)
1	First-Aid Kit (Safety Center)
2	30' Tag Lines
1	Hardhat Mounted Face-Shield (Clear)
1	Lardal Pocket Mask
2	CPR Protectors
4	Dust Masks
4	Pair Latex Disposable Gloves
1	Reflective Vest
2	Beacon Lights
1	Nut Driver Set of 7, ¼" to ½"
1	¾" Drive Air Impact Wrench Ingersol Rand (Serial A01J13264)
1	Set of 10, ¾" Impact Sockets 3/16" to 1 5/16"
2	12" Rigid Pipe Wrench
1	18" Rigid Pipe Wrench
2	24" Rigid Pipe Wrench
1	36" Rigid Pipe Wrench
1	Set of 16, SK Flat Wrenches ¼" To 1 ¼"
1	Set of 16, Westward Metric Flat Wrenches 7mm to mm
1	Westward ¼" DR Socket Set
1	Proto ⅜" DR Socket Set
1	Proto ½" DR Socket Set
1	Westward ½" DR Deep Socket Set
1	6" Proto Crescent Wrench
1	8" Proto Crescent Wrench
1	10" Proto Crescent Wrench
1	12" Proto Crescent Wrench
1	15" Proto Crescent Wrench
3	Ball Peen Hammers
3	Pairs of Channel Lock Pliers
1	Set of 9, SK ½" DR Allen Head Wrenches 5/32" to 5/8"
1	Proto Hex Key Set of 11, ¼" to ⅜"
1	Hex Key Set of 9, 5/64" to ¼"
1	Hex Key Set of 7, 2mm to 8mm
1	½" DR to ¾" DR Adaptor
1	½" DR to ⅜" Dr Adaptor
2	Wire Brushes
9	Assorted Steel Files
1	Battery Post Cleaner
	Assortment of Punches and Chisels
2	Pinch Bars



UNIT 35203 cont.

QTY	DESCRIPTION
1	6" Vice Grip Pliers
2	8" Vice Grip Pliers
3	10" Vice Grip Pliers
2	6" Pliers
2	8" Pliers
4	Side Cutter Pliers
1	6" Needle Nose Pliers
1	8" Needle Nose Pliers
1	Hacksaw with 4 Spare Blades
	Assorted Screw Drivers
2	Pair Tin Snips
1	Pair External Retaining Ring Pliers
1	Pair Internal Retaining Ring Pliers
3	Utility Knives
4	Scrapers
1	Magnetic Stick
1	100' Tape Measure
1	Chalk Line
1	2' Carpenter Level
1	Torpedo Level
1	Carpenter Square
2	Sets of 3/8" Chain Spreaders
1	2" - 6' Lift-all Sling
2	2" - 10' Lift-all Slings
2	2" - 4' Lift-all Slings
2	3" - 10' Lift-all Slings
4	8' Tuflex Slings
4	6' Tuflex Slings
4	10' Tuflex Slings
2	14' Tuflex Slings
2	26"x 26" Wooden Outrigger Pads
2	22"x 22" Wooden Outrigger Pads
2	20" Aluminum Outrigger Pads
1	Plastic Tool Box With 2 - Danger Wide Load Signs & 4 Orange Flags
1	Pin On Steel Push Pole Receiver
1	Plastic Tool Box with an Assortment of Eye Bolts 1/4" to 1 1/4"
1	Plastic Tool Box with an Assortment of Shackles 3/8" to 1"
2	16' Lengths System 7 3/8" Load Chain with Hooks
4	11' Lengths System 7 3/8" Load Chain with Hooks
6	Load Binders
2	Spare 3/8" Load Chain Hooks
1	3' Steel Snipe
2	3" Ratchet Tie- Down Straps
6	2" Ratchet Tie- Down Straps



UNIT 35203 cont.

QTY	DESCRIPTION
1	1 ½ -Ton Columbus McKinnon Com-a-long
1	8-Ton Hydraulic Jack
1	15-Ton Journal Jack
1	30-Ton Enerpac Hydraulic Pump with Jack Head
2	Detachable Tow Hooks
1	50' Rapid Reel of ¾" Air Hose
2	Spare ¾" THOR Couplers
2	Spare ¼" by ¾" Male Air Fittings
2	Spare ¼" by ¾" Female Air Fittings
1	¼" Air Chuck
1	¼" Air Gun
1	Tire Pressure Gauge
1	¾" Thor Coupler to ¼" Male Air Fitting Adaptor
1	¾" Thor Coupler to ¼" Female Air Fitting Adaptor
4	¾" Aero-Quip HYD Quick Couplers
1	¾" Drill Adapter
1	7/8" Drill Adapter
1	1" Drill Adapter
2	Valve Stem Shear Pins
	Assortment of Roll Pins, Cotter Pins, Snap Rings, Electrical Crimp Fittings
8	¾" Latch Kits
1	O-Ring Kit
1	O-Ring Repair Kit
2	Spade Shovels
1	8 # Sledge Hammer
1	10 # Sledge Hammer
1	Skid Pick
1	Long Pry Bar
2	Short Pry Bars
1	Fiber Glass Probe
1	Set of Booster Cables
2	20' Power Cords
1	25 # Propane Bottle with Hose, Regulator, Torch , & Striker
1	5 Gal. Gas Can
1	5 Gal. Diesel Can
1	3 Gal. Rubberized Pail
1	6" Nylon Tow Rope
1	Waterloo Tool Chest
1	Proto Tool Chest
1	Large Frame Mounted Tool Locker
2	Custom Made Deck Tool Boxes
1	Electrical Pig Tail Adapter
	Assortment of Plastic Ties
	Assortment of Fuses



UNIT 35203 cont.

QTY	DESCRIPTION
1	Bug Screen
1	Winter Front
1	Box of Assorted Drill Bits
1	Grease Gun & 2 Tubes of Grease
1	4 Liter Jug of Motor Oil
1	Box of Rags
	Assortment of Spray Cans, Penetrating Oil, WD-40, Cleaners
	Pipe Thread Sealant
	Assortment Of Pipeline Info Books, Manuals & Maps
	Teflon Tape & Emery Cloth
2	2000-PSI Pressure Gauges
1	½" Ball Valve
1	¾" Ball Valve
1	1" Ball Valve
1	2" Ball Valve
	Assortment of 2" & 3" Male & Female Kamlock Fittings
	Assortment of Threaded Fittings, Pipe Nipples , Bushings ¼" to 2"

**GRETNA EMERGENCY RESPONSE INVENTORY
UNIT 319**

1	Fire Extinguishers 30# (Ansul & Redline)
1	Miller Pipe Pro-Welder
1	Motorola Radio
1	Motorola Flip – Cell Phone. Hands Free
1	Motorola Receiver Type
1	Flare Pistol
1	Box of Flares
1	Revolving Amber Light
1	Industrial Scientific Gas Monitor TMX412
1	Industrial Scientific Personal Gas Monitor (Serial #0207492-261)
2	Safe Work Permit Books
1	Enbridge Welding Manual
2	Greenlee Volt/Amp meters
1	F.N. Bell Gauss/Tesla Meter 4048
1	Bushnell Binoculars
1	Spare Motorcraft Fuel Filter
1	Orange Flashlight
1	Hydraulic Jack
1	3' x 8' Sheet x ½" Plywood
1	Aluminum Deck
2	5" Makita Angle Grinders
1	7 Drawers International Toolbox
5	Blue Plastic Rod Guard Containers
1	2' Aluminum Level



UNIT 319 cont.

QTY	DESCRIPTION
1	2' Magnetic Level (Yellow)
1	4' Magnetic Level (Yellow)
2	Large Oxygen Bottles
3	2' Carpenter Squares
1	Large Acetylene Bottle
1	Set of Oxygen – Acetylene Regulators
1	Hack Saw
1	25' Brica Tape Measure
1	16' Brica Tape Measure
1	100' Stanley Tape Measure
1	Aluminum spool with 50' Oxygen-Acetylene Hose
1	Welding Helmet
1	Leather Welding Coat
1	12 # Sledge Hammer
1	Face Shield
1	Piece Screwdriver Set (Fuller)
1	21 Piece Flat Wrench Set (S – K) Standard
1	8" Crescent (Proto)
1	10" Crescent (Proto)
1	15 Piece Set of Punches (Proto)
1	22 Piece Set Flat Wrenches (Westward) Metric
1	24 Piece Set Westward Sockets 3/8" Drive
1	24 Piece Set Westward Sockets 1/2" Drive
6	Vise Grips
1	Stanley Line Level
13	Pipeline Wedges – Brass
3	Pliers
1	Stanley 100' Tape Measure
2	Clipping Hammers
3	Wing Wraps for Line Level
4	Ball Peen Hammers
4	Large Pliers
1	Tin Snips
1	Snap ring Pliers
1	Needle nose Pliers
2	Side Cutters
6	Pipeline Files
1	Claw Hammer
1	Piece Rigid Pipe Wrench Set
1	Pipe Line-up Dogs
1	Victor Cutting Torch
1	6' Aluminum Step Ladder
1	4' Mud Board
1	8" Vice



UNIT 319 cont.

QTY	DESCRIPTION
1	Magnetic Grinder Stand
1	30# Propane Bottle
1	Hiab 130 Picker
1	Tiger Torch
1	Galvanized Milk Pail
6	Beveling Bands (10" – 48" CRC-Evens)
2	Victor Beveling Torches
1	Beveling Machine (Cranler & Remote)
3	Aluminum Spools (Lead, Ground & Remote Cables)
1	CAA First-Aid Kit
1	Set of Fire Blankets
1	Set of Booster Cables
1	Spare Stinger & Whip
1	1 Ton Strap
1	25' – 220 amps. Extension Cord
1	Enbridge Right-of-Way Maps Package
1	Halogen Portable Work Lamp
1	Arc-Air Stinger
4	110 Amps. Extension Cords
1	6' x 1" Sling
1	Set of Spreader Chains
16	11# Boxes of Liquid Air Welding Rods
1	50# Box of Lincoln Welding Rods
1	Plate Clamp
1	Large Shackle
1	Set of Drill Bits (29 Piece)
4	Spare Face Shield Lenses
3	Pairs of Spare Work Gloves
1	O-ring Kit
1	Black & Decker 1 ½" Die Grinder
6	Valve Adapters
1	Spare Tweco Stinger
2	Spare Tweco Connectors
2	20' Chains
1	15 Ton Sleeve Jack
1	5 Ton Hydraulic Jack
2	4' Aluminum Yard Sticks
3	Wire Brushes
4	Utility Knives
3	Scrapers
1	Ridged Laser Level (Torpedo)
2	Torpedo Levels
1	0 – 6 Calipers
1	Compass
2	Combination Squares



UNIT 319 cont.

QTY	DESCRIPTION
2	12" Square
1	Curve-O-Mark Center Finder
2	Boxes of clear welding Helmet Lenses
1	20 Piece Set of ¼" Letter Stamps
7	Piece Pry Bar Set
5	1" Ratchet Straps
1	2" Ratchet Straps
1	2' Pro Smart Level
1	20 Piece Set of ¾" Drive Sockets (Proto)
1	Box of Walter Zip Cuts
1	Box of Walter Pipeline Wheels
2	Walter Buffing Wheels
1	Emergency Road Flare Kit
1	Set of Welding Gloves
2	Curve-O-Mark Wrap-Around
1	¾" Makita Drill
1	½" Makita Drill
1	Portable Halogen Work Lamp
1	Heat Demon (Portable Heater)
1	6 Drawers International Tool Box
1	In Cab First-Aid Kit
1	50# Pioneer Rod Oven
4	Boomers



QUALIFIED INDIVIDUALS NOTIFICATION

As per the National Preparedness for Response Exercise Program (PREP) guidelines, a Qualified Individual (QI) notification drill is performed 4 times per year (quarterly). During these quarterly drills, contact is made from the Control Center via telephone, radio, or pager to the Qualified Individual or their designate in the Superior Region to ensure they can be reached to carry out their duties in the event of a spill response emergency. Confirmation of receipt of the contact must be made by the QI back to the Control Center to validate the drill.

Documentation for these drills is filed in the Control Center and in Superior, Wisconsin Regional office.

Qualified Individual

M. J. Willoughby
Superior Region General Manager, Enbridge (U.S.) Inc.
Business: 715-394-1410
Mobile: 218-393-5772
Business FAX: 715-394-1405



Emergency Response Trained Personnel

Enbridge employees are trained for emergency response according to the OSHA 1910.120 Hazardous Waste Operations and Emergency Response (HAZWOPER) standard. Depending on their job classification, employees receive training in first responder awareness, first responder operations, hazardous material technicians, hazardous material specialists, incident commander, support and clerical staff. Employees receive an 8 hour annual refresher as required by the standard.

As per the National Preparedness for Response Exercise Program (PREP) guidelines, company initiated tabletop exercises, equipment deployment exercises, and unannounced deployment exercises are performed and documented annually. Company personnel also participate in industry led emergency response exercises as well as local exercises throughout our system.

The following chart reflects the number of annually HAZWOPER trained Enbridge employees by response zone:

Superior Region Response Zone	Chicago Region Response Zone	Cushing Region Response Zone	Enbridge Pipelines North Dakota Response Zone
131	125	85	40

In addition, internal response resources are supplemented by contract staff supplied by pre determined agreements with Oil Spill Response Organizations (OSRO's) and other local contractors. In many instances these resources are response zone specific and contact information is listed in the Enbridge Emergency Response Directory.