

NANTOBA, CANADA  
NORTH DAKOTA, U.S.A.

JOLIETTE  
792.00

DONALSON  
814.00

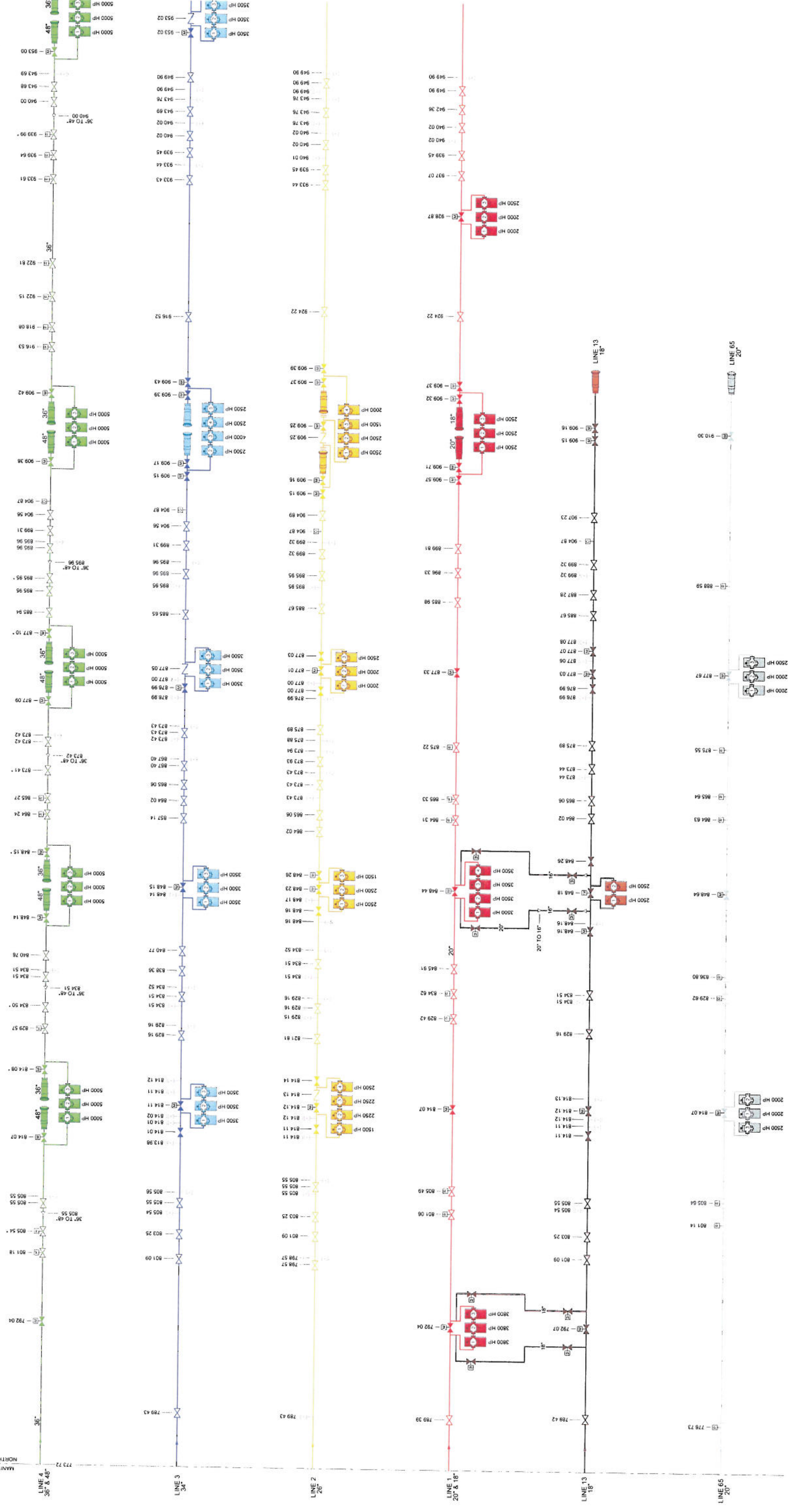
VIKING  
847.91

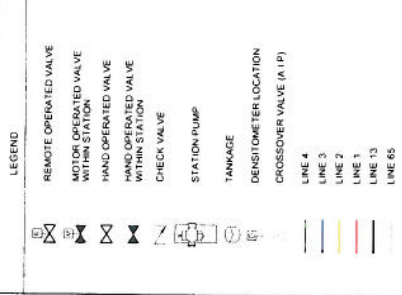
PULMER  
876.97

CLEARBROOK  
905.10

WILTON  
928.77

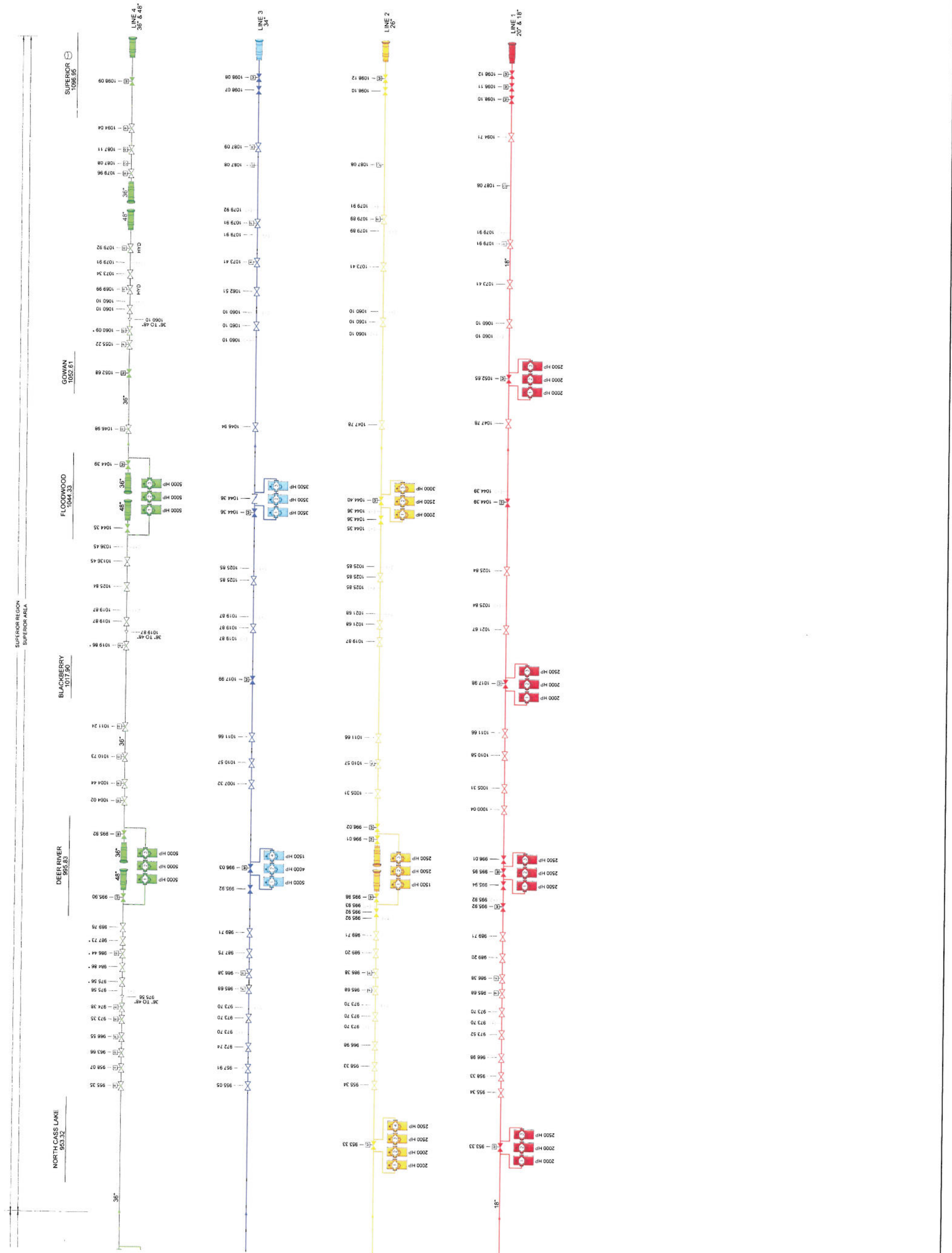
CASS LAKE  
952.98





NOTE:  
 DUE TO THE COMPLEXITY OF STATION PUMP, NOT ALL TAKE-OFFS OR STATION VALVES WITHIN A STATION SHOW UP ON THIS DRAWING. STATION PUMP OR TAKE-OFFS WITHIN THE STATION SET THE RESPECTIVE STATION BOUNDARY POINTS.

ALL ELEVATION NUMBERS ARE HIGHER THAN ADJUSTED TO AFT AND COMPARED TO BE NOT REFLECT EXACT ELEVATION.



**NOTE**  
 \*\* ADJUSTED MILE POST

REVISIONS	DATE	BY	APP
1	10/13/20	JL	JL
2	10/13/20	JL	JL
3	10/13/20	JL	JL

NO.	DESCRIPTION	DATE	BY	APP
1	COMPLETE PUMP STATION + 50M	10/13/20	JL	JL
2	ADJUSTED MILE POST	10/13/20	JL	JL
3	ADJUSTED MILE POST	10/13/20	JL	JL

PROJECT NAME	GREYNA TO SUPERIOR AREA
CLIENT NAME	GREYNA TO SUPERIOR AREA
DATE	10/13/20
SCALE	AS SHOWN
PROJECT NO.	D-3-7-14138-3-0
DATE	10/13/20
BY	JL
APP	JL

**ENBRIDGE**

**GREYNA TO SUPERIOR SYSTEMS**

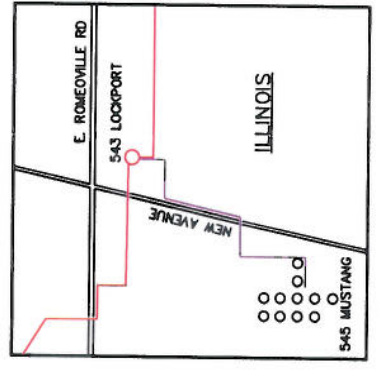
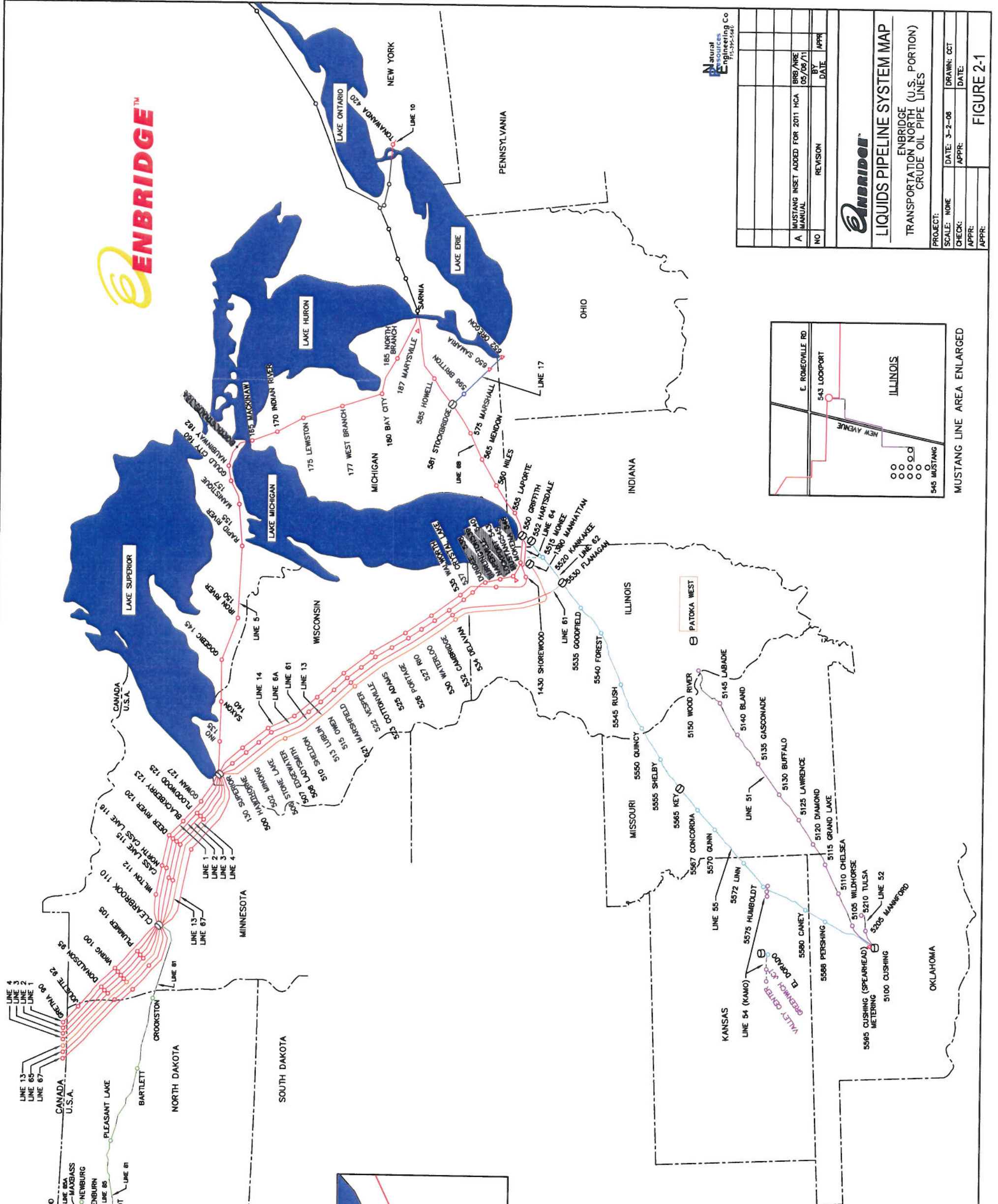
REVISIONS: SUPERIOR AREA  
 MULTIPLE SCHEMATIC DRAWING



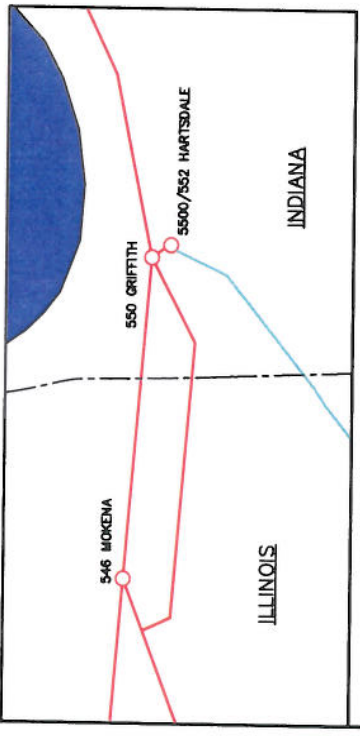
**LIQUIDS PIPELINE SYSTEM MAP**  
 ENBRIDGE  
 TRANSPORTATION NORTH (U.S. PORTION)  
 CRUDE OIL PIPE LINES

PROJECT:	SCALE: NONE	DATE: 3-2-08	DRAWN: C.T.
CHECK: NONE	APPR: [ ]	DATE: [ ]	
APPR: [ ]			

FIGURE 2-1



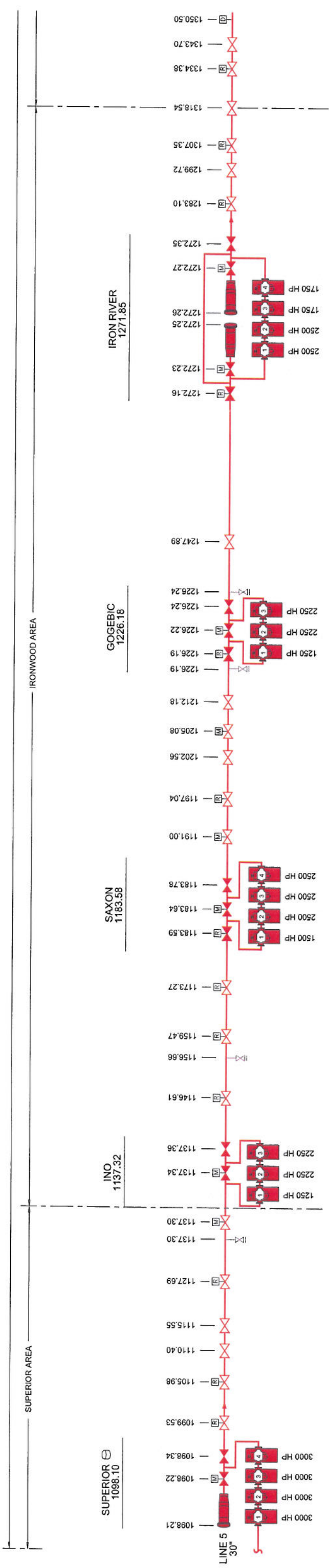
MUSTANG LINE AREA ENLARGED



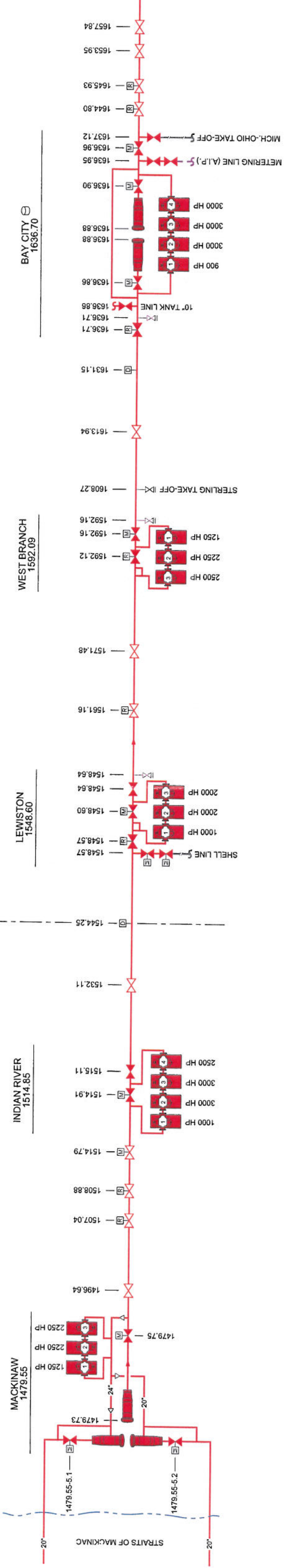
GRIFFITH/HARTSDALE AREA ENLARGED

PIPELINE NAME	OPERATOR ID
ENBRIDGE ENERGY, LIMITED PARTNERSHIP	11169
ENBRIDGE PIPELINES (NORTH DAKOTA) LLC	15774
ENBRIDGE PIPELINES (NORTH DAKOTA) LLC (IDLE)	15774
CCPS TRANSPORTATION, LLC	32080
CCPS TRANSPORTATION, LLC (IDLE)	32080
ENBRIDGE PIPELINES (OZARK) L.L.C.	31847
ENBRIDGE PIPELINES (OZARK) L.L.C. (INACTIVE)	31847
ENBRIDGE PIPELINES (TOLEDO) INC.	31448
ENBRIDGE STORAGE (PATOKA) LLC	31848
ENBRIDGE (LUXOR) LINE LLC (INACTIVE)	31848
ENBRIDGE (MUSTANG) LINE LLC	31166
ENBRIDGE PIPELINES (SOUTHERN LIGHTS) LINE LLC	32502

- ⊖ Terminal
- Station
- ▲ Metering Facility
- Site
- Non-Operational
- Construction 2009/2010







CHICAGO REGION  
BAY CITY AREA

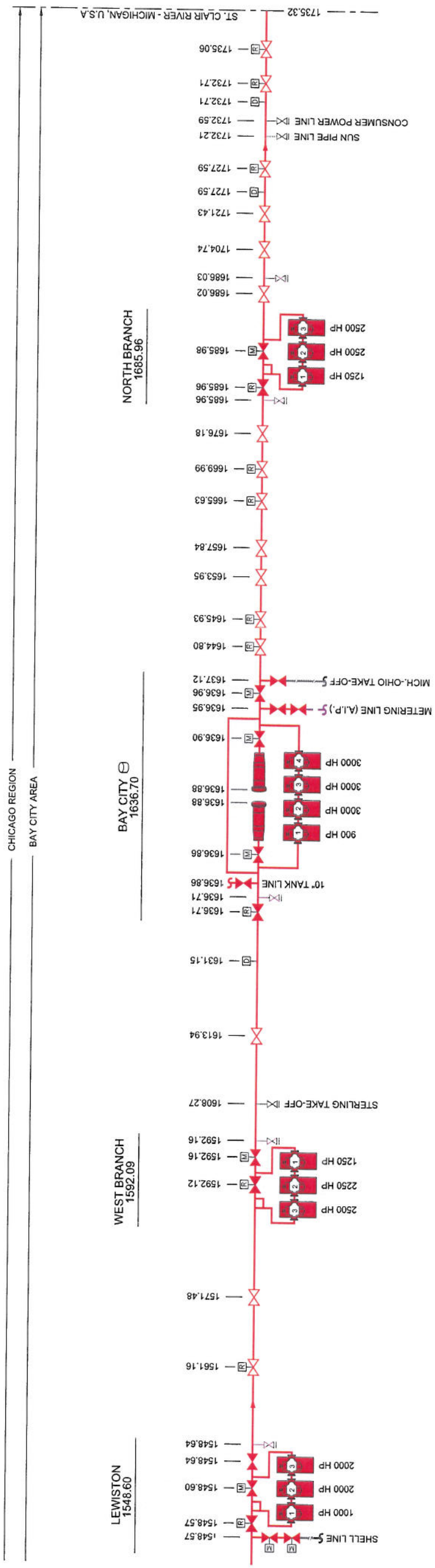
LEGEND

- REMOTE OPERATED VALVE
- MOTOR OPERATED VALVE WITHIN FACILITY
- HAND OPERATED VALVE
- HAND OPERATED VALVE WITHIN FACILITY
- MOTOR OPERATED VALVE
- REMOTE OPERATED VALVE WITHIN FACILITY
- Crossover Valve (A.I.P.V.)
- Crossover Valve (Foreign)
- TANKAGE
- STATION PUMP
- REDUCER
- DENOMINATOR LOCATION
- LINE 5
- OTHER/FOREIGN PIPELINE
- LINE A.I.P.

AREA CLASSIFICATION



NOTES:  
 DUE TO THE COMPLEXITY OF STATION PIPING, NOT ALL TAKE-OFFS OR STATION VALVES WITHIN A STATION SHOW UP ON THIS DRAWING FOR FURTHER DETAILS WITHIN THE STATION, SEE THE RESPECTIVE STATION GENERAL PIPING PLAN.  
 MILE POST/VALVE NUMBER MAY HAVE BEEN ADJUSTED TO FIT FIELD CONDITIONS AND DO NOT REFLECT EXACT STATIONING.



REPLACES DRAWING	
D-3.7-6198--0	D-0.4-10201--0
3	ADDED CROSSOVER VALVES, REGIONS/AREAS, FACILITY AREAS & REV'D PER FIELD INFO. JSL 4-23-10 SD
2	CORRECTED UNIT HP AT GOULD CITY, MICHIGAN & LEWISTON JT 12-3-07 KWS
1	CHANGE CHECK VALVE TO GATE VALVE MKS 4-27-07 KWS 1548.60 PUM REPORT (B62005-02)
NO	REVISION
	BY DATE
	APPR

PROJECT: NONE		DATE: 1-18-07	DRAWN:
CHECK: KWS	APPR:	DATE:	
APPR: SD			

<b>ENBRIDGE</b>	
<b>LINE 5</b>	
SUPERIOR, IRONWOOD, ESCAN & BAY CITY AREAS	
MAINLINE SCHEMATIC DIAGR	

D-3.7-14144

SUPERIOR REGION  
SUPERIOR AREA

SUPERIOR 0.00

HAWTHORNE 22.99

MINONG 41.13

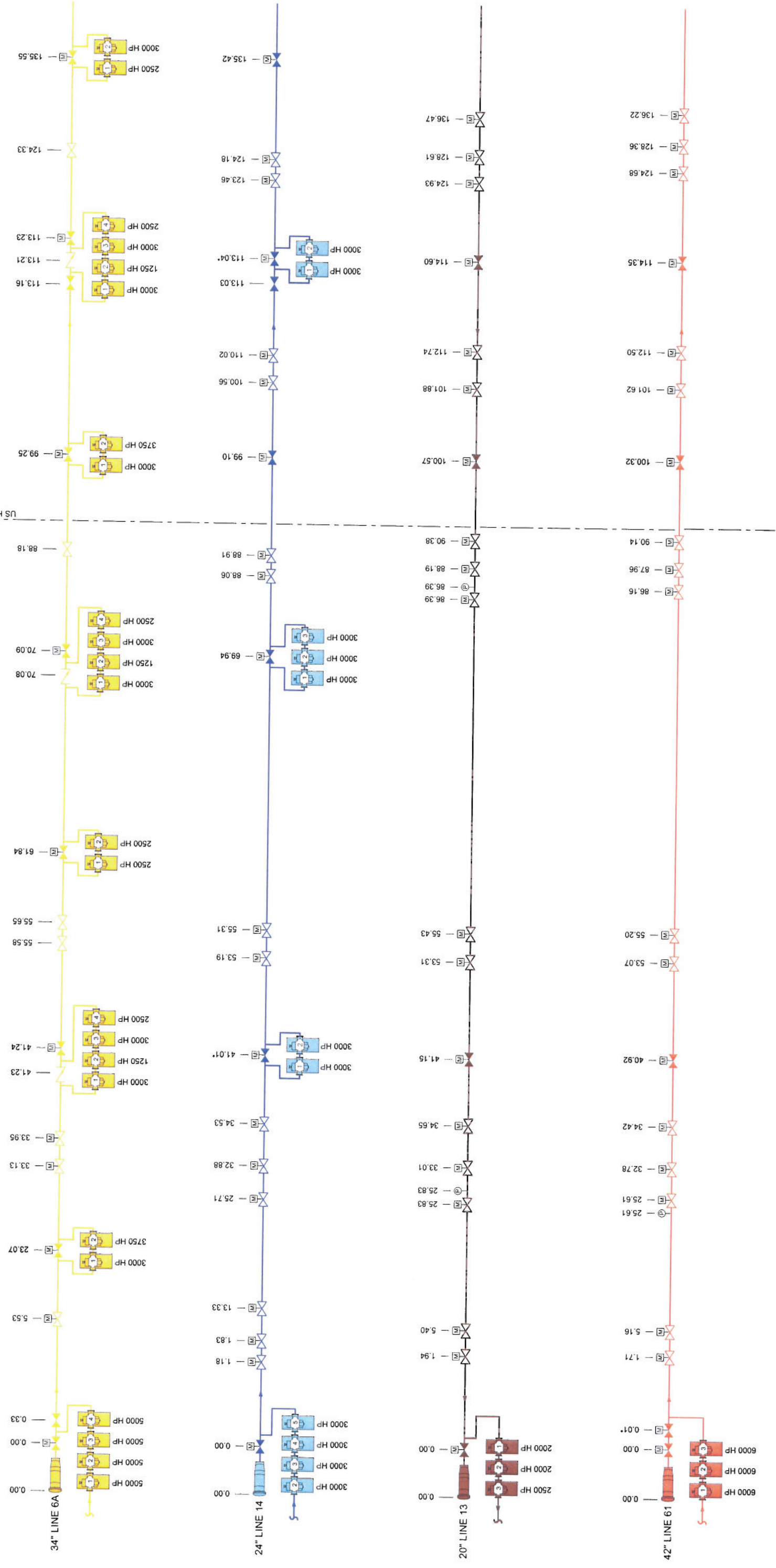
STONE LAKE 61.82

EDGEWATER 69.81

LADYSMITH 99.17

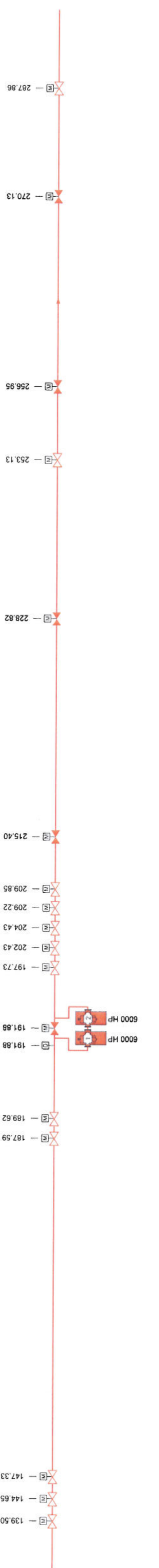
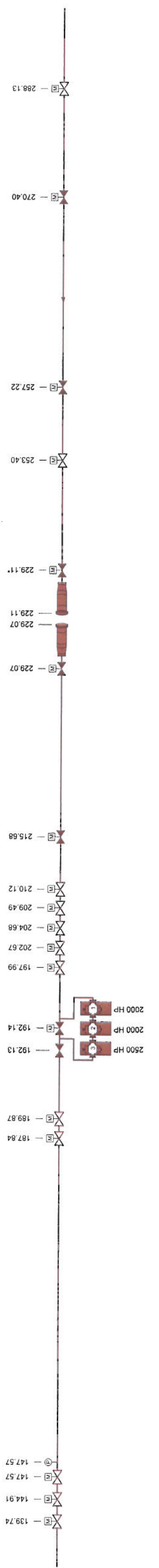
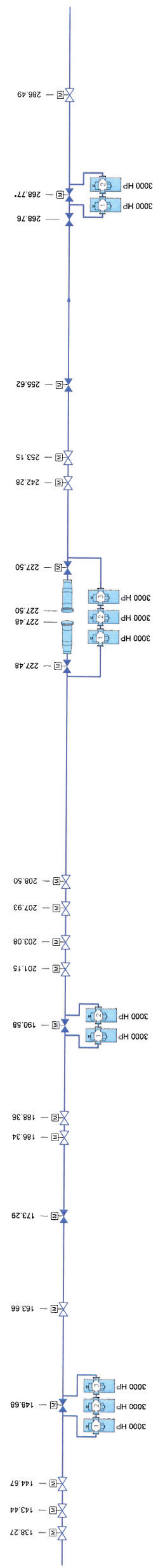
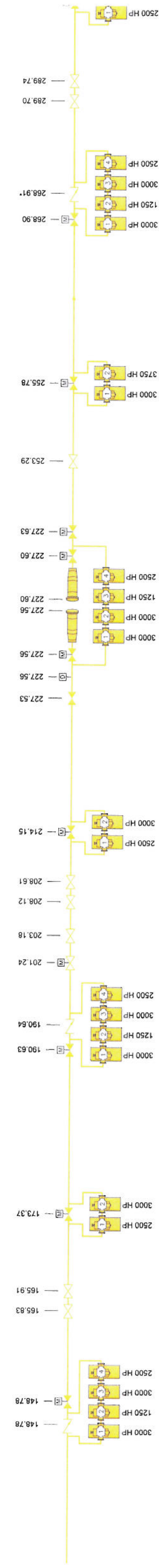
SHELDON 113.08

LUBLIN 135.53



CHICAGO REGION  
FORT ATKINSON AREA

OWEN 148.76      MARSHFIELD 173.37      VESPER 190.59      COTTONVILLE 214.12      ADAMS 227.53      PORTAGE 255.73      RIO 268.62      WATI 29



WATERLOO  
292.63

CAMBRIDGE  
304.54

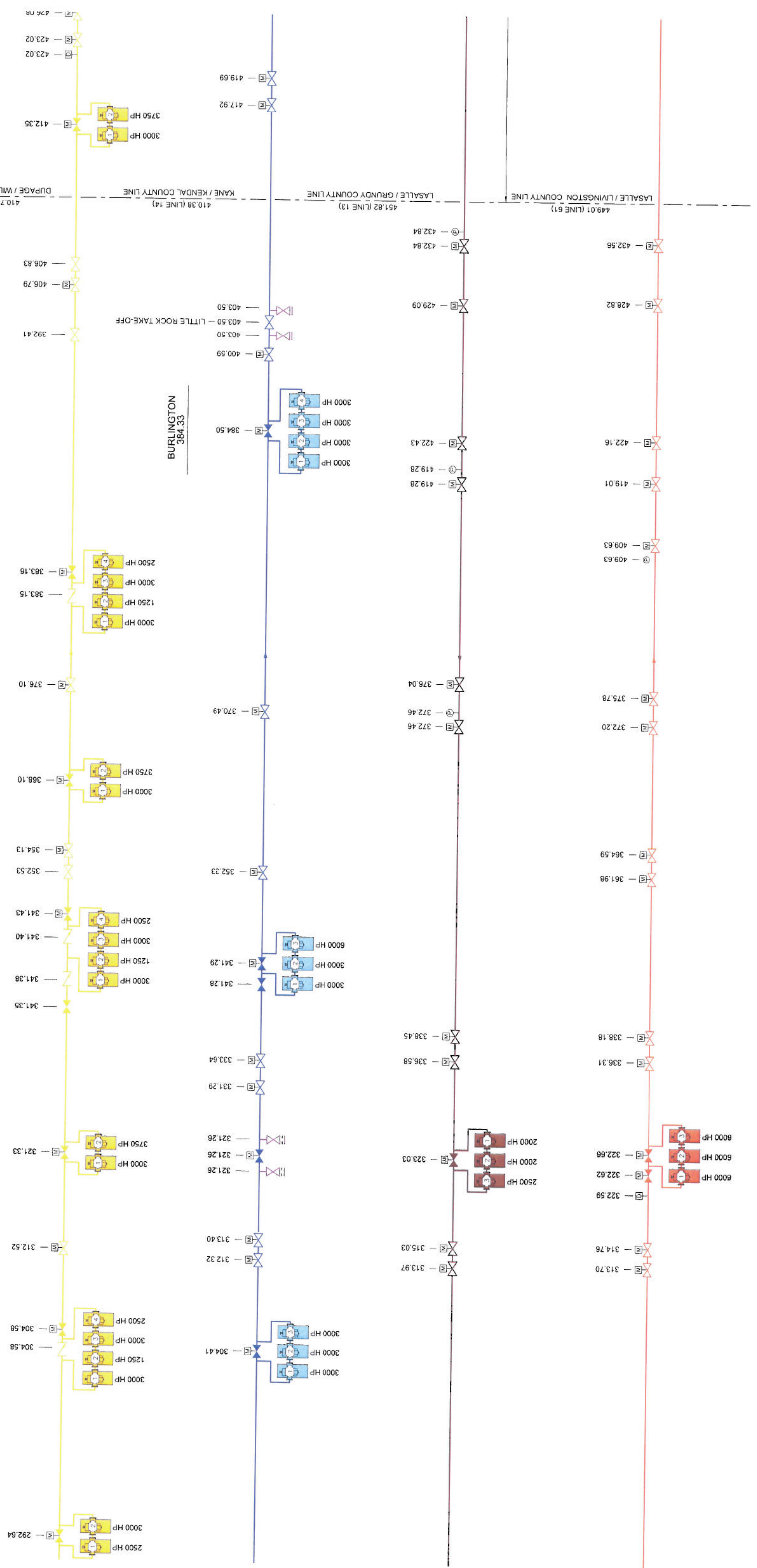
DELANAN  
321.28

WALWORTH  
341.35

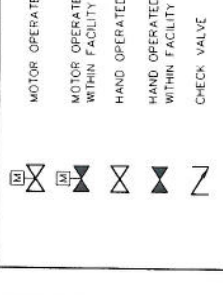
CRYSTAL LAKE  
368.05

DUNDEE  
383.09

NAPERVILLE  
412.35



**LEGEND**



MOTOR OPERATED VALVE  
 MOTOR OPERATED VALVE WITHIN FACILITY  
 HAND OPERATED VALVE  
 HAND OPERATED VALVE WITHIN FACILITY  
 CHECK VALVE  
 VALVE A.I.P.  
 STATION PUMP  
 TANKAGE  
 DENSITY METER LOCATION  
 PRESSURE TRANSMITTER LOCATION (ONLY OUTSIDE FACILITY LIMITS)

LINE 6A  
 LINE 13  
 LINE 14  
 LINE 61  
 LINE 64

**AREA CLASSIFICATION**



FACILITY LIMITS  
 MILE POST/VALVE NUMBER MAY HAVE BEEN ADJUSTED TO FIT FIELD CONDITIONS AND DO NOT REFLECT EXACT STATIONING  
 \* ADJUSTED MILE POST

NOTES  
 DUE TO THE COMPLEXITY OF FACILITY PIPING, NOT ALL TAKE-OFFS OR FACILITY VALVES WITHIN A STATION SHOW UP ON THIS DRAWING. FOR FURTHER DETAILS WITHIN THE FACILITY, SEE THE RESPECTIVE FACILITY GENERAL PIPING PLAN.

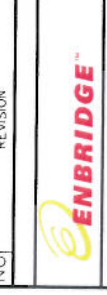
REPLACES DRAWINGS  
 D-37-14143--0  
 D-37-12462--0  
 D-37-15013--0  
 D-37-15014--0  
 D-04-10200--0  
 D-04-10242--0

NO	REVISION	BY	DATE	APPR
3	ADDED LINE 13 AND REVISED LINE 61 PER PHASE 2 P&IDs	JSL	3-22-11	SD
2	COMBINED REPLACED DWG'S (NOTED), ADDED LINE 61 & REVISED BOLT INFO	JSL	4-27-09	SD
1	REVISED AS PER FRANKFORT & SHREWOOD TANKAGE	JSL	10-8-08	SD

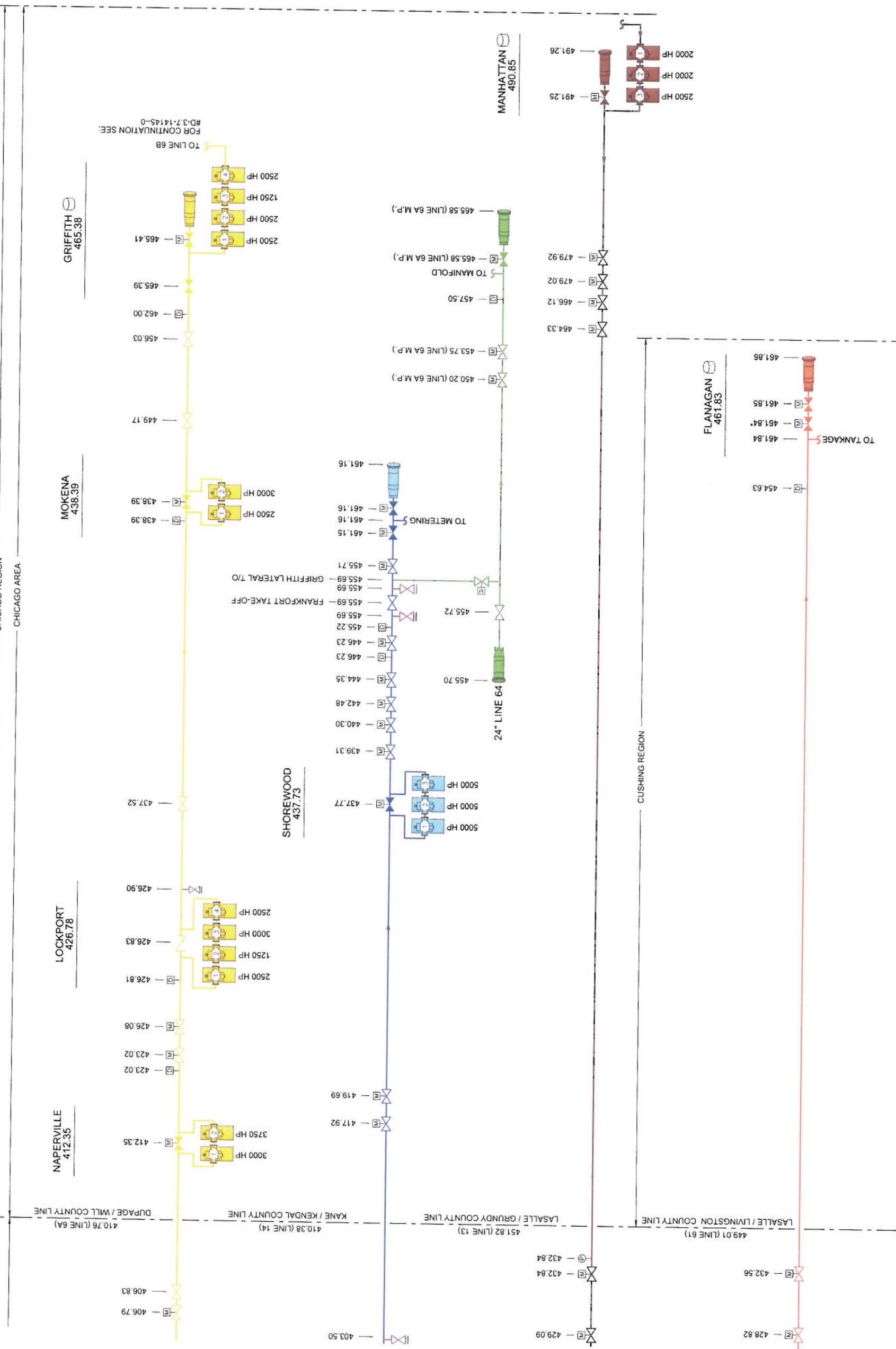
PROJECT  
 SCALE: NONE  
 CHECK: KWS  
 APPR: SD

DATE: 1-28-07  
 DRAWN: DATE:  
 DATE:  
 DATE:

APPR: SD  
 D-37-14142



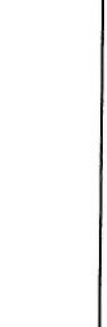
**SUPERIOR SOUTH SYST**  
 SUPERIOR, FORT ATKINSON, CHICAGO  
 LINES 6A, 13, 14, 61 & 64  
 MAINLINE SCHEMATIC DIAGR



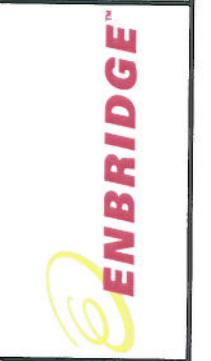
PROJECT	SCALE	CHECK	APPR
SUPERIOR SOUTH SYST	NONE	KWS	SD

DATE: 1-28-07  
 DRAWN: DATE:  
 DATE:

APPR: SD  
 D-37-14142



**SUPERIOR SOUTH SYST**  
 SUPERIOR, FORT ATKINSON, CHICAGO  
 LINES 6A, 13, 14, 61 & 64  
 MAINLINE SCHEMATIC DIAGR



- Legend**
- Response Facilities
  - Commercially Navigable Waterways
  - Pipeline
  - Drinking Water HCA
  - Ecological HCA
- \*The U.S. DOT PHMSA restricts the release of DW and ESA symbology to pipeline states.

**Enbridge Energy, Limited Partnership  
Superior Region Unusually Sensitive Areas  
(USA) Overview Map**

0 40 80 120 160 Miles

DATE ISSUED: 12/1/2004  
 DATE REVISED: 10/14/2011  
 SCALE: 1:2,600,000  
 DRAWN BY: CMK  
 SERIES: Emergency Response Times

**PE** Natural Resources Engineering Co.  
 715-395-5680

Canada

Lake Superior

Upper Red Lake  
Lower Red Lake

Lines 1, 2, 3, 4, 13, 65 & 67  
Line 81

Grand Forks  
Thief River Falls  
Clearbrook  
Bemidji  
Superior

Lines 1, 2, 3, 4, 13 & 67

Ironwood

Escanaba

Lines 6A, 13, 14, & 67

Vesper

Line 5

Lake Superior  
Lake Michigan  
Lake Huron

Wisconsin  
Wisconsin River

Mississippi River

St. Croix River

Lake Winnebago  
Fox River

Minnesota  
Mille Lacs Lake

Michigan

South Dakota

North Dakota

Red River of the North

Lake of the Woods

Rainy River

Superior

Ironwood

Escanaba

Vesper

Line 5

Lake Superior

Lake Michigan

Lake Huron

Wisconsin

Mississippi River

St. Croix River

Lake Winnebago

Fox River

Minnesota

Mille Lacs Lake

Michigan

South Dakota

North Dakota

Red River of the North

Lake of the Woods

Rainy River

Superior

Ironwood

Escanaba

Vesper

Line 5

Lake Superior

Lake Michigan

Lake Huron

Wisconsin

Mississippi River

St. Croix River

Lake Winnebago

Fox River

Minnesota

Mille Lacs Lake

Michigan

South Dakota

North Dakota

Red River of the North

Lake of the Woods

Rainy River

Superior

Ironwood

Escanaba

Vesper

Line 5

Lake Superior

Lake Michigan

Lake Huron

Wisconsin

Mississippi River

St. Croix River

Lake Winnebago

Fox River

Minnesota

Mille Lacs Lake

Michigan

South Dakota

North Dakota

Red River of the North

Lake of the Woods

Rainy River

Superior

Ironwood

Escanaba

Vesper

Line 5

Lake Superior

Lake Michigan

Lake Huron

Wisconsin

Mississippi River

St. Croix River

Lake Winnebago

Fox River

Minnesota

Mille Lacs Lake

Michigan

South Dakota

North Dakota

Red River of the North

Lake of the Woods

Rainy River

Superior

Ironwood

Escanaba

Vesper

Line 5

Lake Superior

Lake Michigan

Lake Huron

Wisconsin

Mississippi River

St. Croix River

Lake Winnebago

Fox River

Minnesota

Mille Lacs Lake

Michigan

South Dakota

North Dakota

Red River of the North

Lake of the Woods

Rainy River

Superior

Ironwood

Escanaba

Vesper

Line 5

Lake Superior

Lake Michigan

Lake Huron

Wisconsin

Mississippi River

St. Croix River

Lake Winnebago

Fox River

Minnesota

Mille Lacs Lake

Michigan

South Dakota

North Dakota

Red River of the North

Lake of the Woods

Rainy River

Superior

Ironwood

Escanaba

Vesper

Line 5

Lake Superior

Lake Michigan

Lake Huron

Wisconsin

Mississippi River

St. Croix River

Lake Winnebago

Fox River

Minnesota

Mille Lacs Lake

Michigan

South Dakota

North Dakota

Red River of the North

Lake of the Woods

Rainy River

Superior

Ironwood

Escanaba

Vesper

Line 5

Lake Superior

Lake Michigan

Lake Huron

Wisconsin

Mississippi River

St. Croix River

Lake Winnebago

Fox River

Minnesota

Mille Lacs Lake

Michigan

South Dakota

North Dakota

Red River of the North

Lake of the Woods

Rainy River

Superior

Ironwood

Escanaba

Vesper

Line 5

Lake Superior

Lake Michigan

Lake Huron

Wisconsin

Mississippi River

St. Croix River

Lake Winnebago

Fox River

Minnesota

Mille Lacs Lake

Michigan

South Dakota

North Dakota

Red River of the North

Lake of the Woods

Rainy River

Superior

Ironwood

Escanaba

Vesper

Line 5

Lake Superior

Lake Michigan

Lake Huron

Wisconsin

Mississippi River

St. Croix River

Lake Winnebago

Fox River

Minnesota

Mille Lacs Lake

Michigan

South Dakota

North Dakota

Red River of the North

Lake of the Woods

Rainy River

Superior

Ironwood

Escanaba

Vesper

Line 5

Lake Superior

Lake Michigan

Lake Huron

Wisconsin

Mississippi River

St. Croix River

Lake Winnebago

Fox River

Minnesota

Mille Lacs Lake

Michigan

South Dakota

North Dakota

Red River of the North

Lake of the Woods

Rainy River

Superior

Ironwood

Escanaba

Vesper

Line 5

Lake Superior

Lake Michigan

Lake Huron

Wisconsin

Mississippi River

St. Croix River

Lake Winnebago

Fox River

Minnesota

Mille Lacs Lake

Michigan

South Dakota

North Dakota

Red River of the North

Lake of the Woods

Rainy River

Superior

Ironwood

Escanaba

Vesper

Line 5

Lake Superior

Lake Michigan

Lake Huron

Wisconsin

Mississippi River

St. Croix River

Lake Winnebago

Fox River

Minnesota

Mille Lacs Lake

Michigan