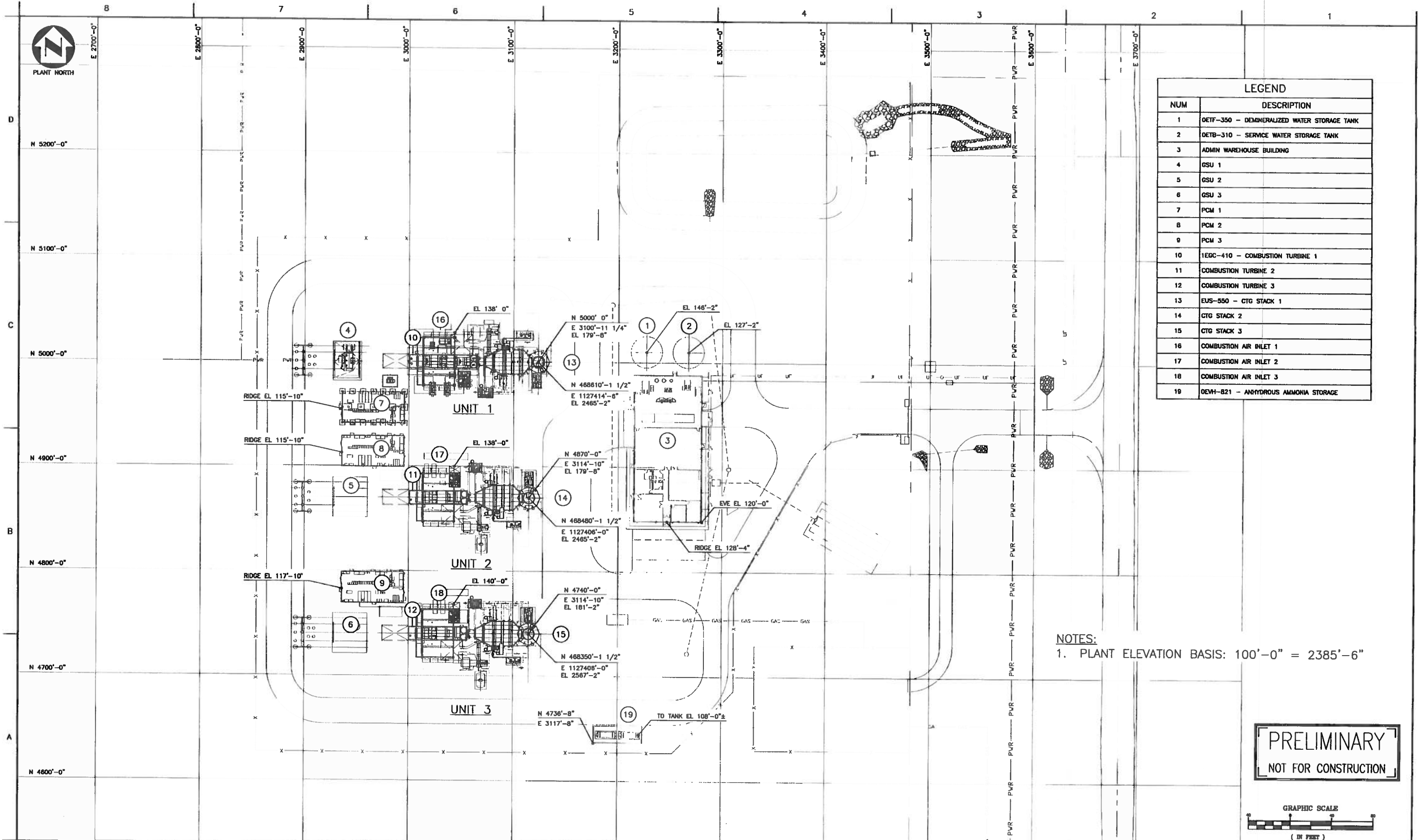


## **Appendix C**

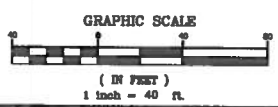
### **Site Plan**



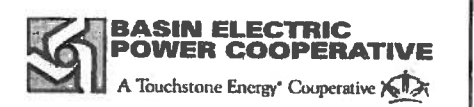
LEGEND	
NUM	DESCRIPTION
1	DETF-350 - DEMINERALIZED WATER STORAGE TANK
2	DETB-310 - SERVICE WATER STORAGE TANK
3	ADMIN WAREHOUSE BUILDING
4	GSU 1
5	GSU 2
6	GSU 3
7	PCM 1
8	PCM 2
9	PCM 3
10	1EGC-410 - COMBUSTION TURBINE 1
11	COMBUSTION TURBINE 2
12	COMBUSTION TURBINE 3
13	EUS-550 - CTG STACK 1
14	CTG STACK 2
15	CTG STACK 3
16	COMBUSTION AIR INLET 1
17	COMBUSTION AIR INLET 2
18	COMBUSTION AIR INLET 3
19	OEVH-821 - ANHYDROUS AMMONIA STORAGE

NOTES:  
 1. PLANT ELEVATION BASIS: 100'-0" = 2385'-6"

**PRELIMINARY**  
 NOT FOR CONSTRUCTION



DRAWING NO.	TITLE	REV	DATE	BY	APP'D	DESCRIPTION



REV	DATE	BY	APP'D	DESCRIPTION
D	7/19/12	KIS	[Signature]	REVISED FOR PERMITTING
C	07/16/12	KIS	ABP	REVISED PER CLIENT COMMENT
B	07/12/12	KIS	ABP	REISSUED FOR PERMITTING
A	06/20/12	KIS	ABP	ISSUED FOR PERMITTING
				PRELIMINARY ISSUE

SCALE	1"=40'-0"	MO	DAY	YR
DRAWN	KIS	08	28	12
CHK'D	[Signature]	7	10	12
APP'D	[Signature]			
DATE	7/19/12			
PROJECT	65385			

**Harris Group Inc.**  
 ENERGY

**PIONEER GENERATION STATION**  
 UNIT 2 & 3  
 PERMIT TO CONSTRUCT

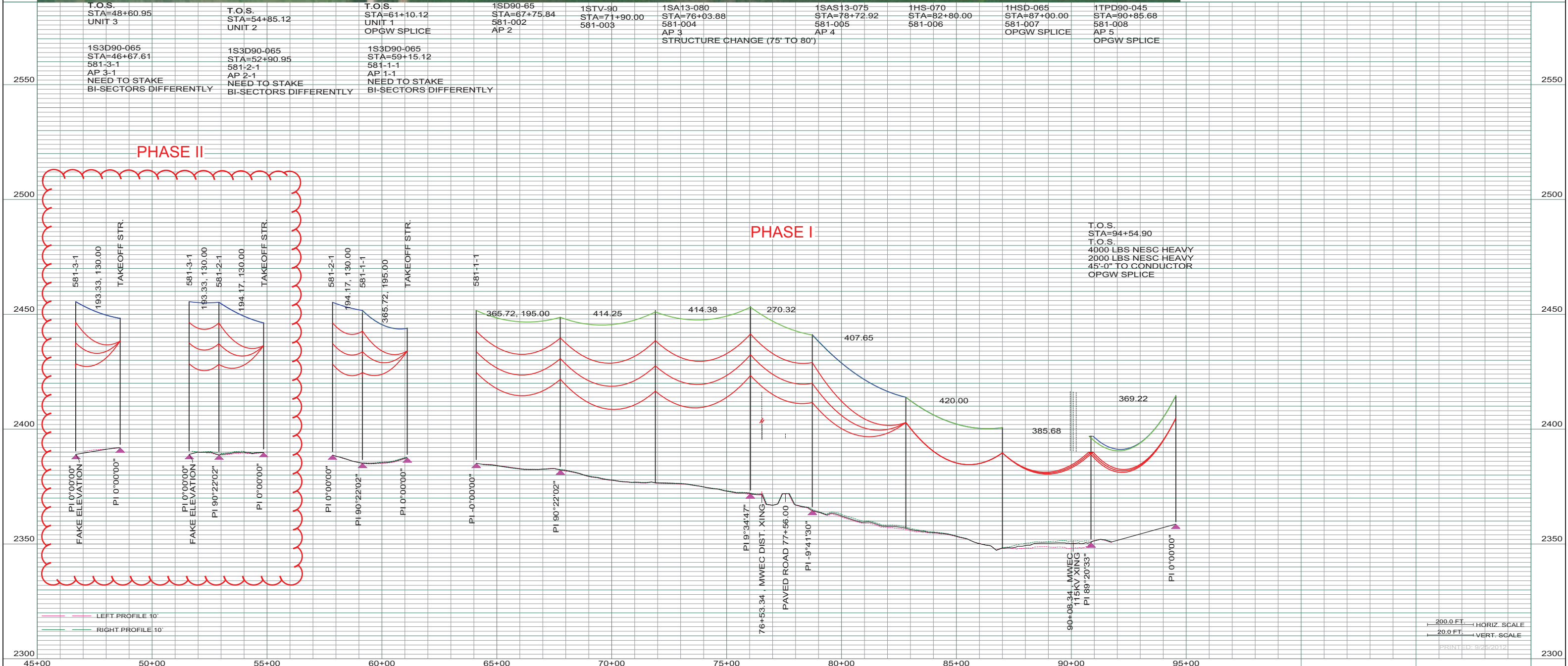
BASIN ELECTRIC POWER COOPERATIVE  
 WILLISTON, NORTH DAKOTA

DRAWING NUMBER **M630002**

kgchu dt



T.O.S. STA=48+60.95 UNIT 3	T.O.S. STA=54+85.12 UNIT 2	T.O.S. STA=61+10.12 UNIT 1 OPGW SPLICE	1SD90-65 STA=67+75.84 581-002 AP 2	1STV-90 STA=71+90.00 581-003	1SA13-080 STA=76+03.88 581-004 AP 3 STRUCTURE CHANGE (75' TO 80')	1SAS13-075 STA=78+72.92 581-005 AP 4	1HS-070 STA=82+80.00 581-006	1HSD-065 STA=87+00.00 581-007 OPGW SPLICE	1TPD90-045 STA=90+85.68 581-008 AP 5 OPGW SPLICE
1S3D90-065 STA=46+67.61 581-3-1 AP 3-1 NEED TO STAKE BI-SECTORS DIFFERENTLY	1S3D90-065 STA=52+90.95 581-2-1 AP 2-1 NEED TO STAKE BI-SECTORS DIFFERENTLY	1S3D90-065 STA=59+15.12 581-1-1 AP 1-1 NEED TO STAKE BI-SECTORS DIFFERENTLY							




REV	DESCRIPTION	DRWN	DSGN	APPD	DATE	REV	DESCRIPTION	DRWN	DSGN	APPD	DATE
0A	ISSUE FOR REVIEW ONLY	CDB	CDB	SW	03MAY12	5					
0B	ISSUE FOR BID	CDB	CDB	-	31JUL12						
3											
4											

STATE NAME:	ZONE:	DESIGN BY:	DATE:
NORTH DAKOTA	3301 NORTH NAD83 SPCS	C. BAUER	03MAY12

DESIGN INFORMATION					
CONDUCTOR	SIZE	STRINGING TENSION	NESC TENSION	DESIGN R.S.	ACTUAL R.S.
954.0 MCM 45/7 ACSR CARDINAL	954.0	5,578	10,045	395	394.8
OPGW	AC 71/571	2,380	4,899	390	390.2
OHGW	3/8" EHS	1,481	3,361	VARIES	VARIES

DESIGN BY:	DATE:	DRAWN BY:	DATE:	DESIGN CHK:	DATE:	APPROVED:
C. BAUER	03MAY12	C. BAUER	03MAY12	S. WISEMAN	03MAY12	

FACILITY:	LOCATION UNIT:	SCALE:	COUNTY NAME:
TRANSMISSION SYSTEM MAINTENANCE	581-115KV LINE - PGS TO ONEOK SUB	AS SHOWN	WILLIAMS


**BASIN ELECTRIC POWER COOPERATIVE**  
 1717 EAST INTERSTATE AVENUE  
 BISMARCK, NORTH DAKOTA  
 PHONE 701-223-0441

**PIONEER GENERATION STATION TO ONEOK SUB**  
**115KV TRANSMISSION LINE**  
**PLAN AND PROFILE**

SCALE: AS SHOWN  
 BASIN DRAWING NO. **581-090-T3-001**  
 COUNTY NAME: WILLIAMS  
 REV. **OB**

200.0 FT. ———— HORIZ. SCALE  
 20.0 FT. ———— VERT. SCALE  
 PRINTED: 5/25/2012