

ONEOK Garden Creek II & III

Third Construction Inspection – 04/22/2014

PCS Case No. PU-12-656

Bartlett & West (B&W) conducted a third onsite inspection of the ONEOK Garden Creek II & III Station (Case No. PU-12-656) on April 22nd, 2014. B&W inspector's Zach Glueckert and Dan Christenson met with Linde's Construction Site Manager, David Ballard. A construction site tour was conducted and construction progress was discussed with Linde's Construction Superintendent, Clint Wellons.

Construction has immensely advanced from the previous site inspection with work continuing primarily on steel structure erection. Mr. Wellons noted that commercial handover for Garden Creek II and Garden Creek III is tentatively set for June 23rd and September 10th, respectively. Discussions with Mr. Ballard indicated that Linde is in compliance with all necessary permits. The damaged silt fence along the property boundaries, noted in the second construction inspection, has been repaired. No other issues were found with the construction activities during this site visit.

The following was taken from the most recently submitted Weekly Construction Progress Report provided by ONEOK in April 2014:

Garden Creek II: Continue to install aboveground piping in the main plant area and inside compressor buildings. Continue to install cable tray, pull cable and wiring terminations. Continue to install insulation. Continue construction on the warehouse building and office building expansion. Install miscellaneous platforms and ladders.

Garden Creek III: Minimal staffing this week. Continue installing insulation. Continue construction on compressor buildings and installing some equipment.

Garden Creek II

Description	% Complete	Description	% Complete
Site preparation	96 %	Final Site Cleanup	0 %
Plant Foundations	94 %	Buildings	67 %
Admin. Bldg	70 %	Plant Electrical Power	44 %
Mechanical	76 %	Instrumentation	30 %

Garden Creek III

Description	% Complete	Description	% Complete
Site preparation	95 %	Final Site Cleanup	0 %
Plant Foundations	86 %	Buildings	52 %
Warehouse	87 %	Plant Electrical Power	2 %
Mechanical	25 %	Instrumentation	3 %

The following are some photographs with descriptions taken during the site visit.



Figure 1. View from the northeast corner of Garden Creek II looking west



Figure 2. View from the northeast corner of Garden Creek II looking southeast



Figure 3. View of a retention pond along the eastern edge of Garden Creek II looking west

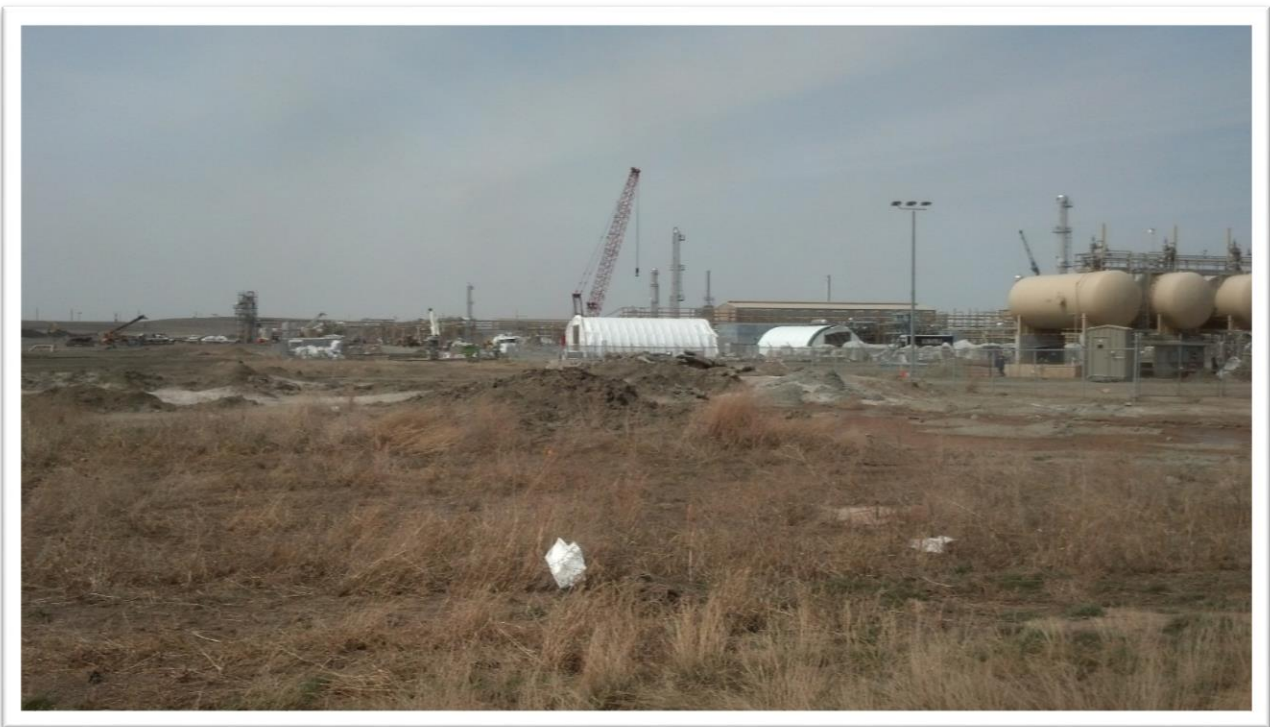


Figure 4. View from the southeast corner of Garden Creek II looking west



Figure 5. View from the southeast corner of Garden Creek II looking northwest



Figure 6. View looking south at the dividing point between Garden Creek II and III. The center of the 8 elevated tanks seen above is the dividing point, with Garden Creek II being the east (left) side and Garden Creek III being the west (right) side



Figure 7. View of Garden Creek III from the dividing line looking southwest



Figure 8. View of Garden Creek III from the dividing line looking west