

**Basin Transload, LLC Crude Oil Pipeline, Burke County, ND. (PSC Case No. PU-12-675)**

---

Permit Compliance Review

NDPUC Contract No.: PU-686-005

Reporting Period: September 30<sup>th</sup>, 2014 - June 8<sup>th</sup>, 2015

Prepared By: Houston Engineering, Inc. / Joshua Kadrmas, Environmental Engineer, and Bart Schultz, Project Manager

---

**Executive Summary:**

Houston Engineering, Inc. (HEI) is under contract with the North Dakota Public Services Commission (NDPSC) to complete permit compliance review and inspection of construction activities, as part of the Basin Transload Crude Oil Pipeline in western North Dakota (PU-12-675). The following is a report summarizing the site visit on June 8, 2015. This was the second and final permit compliance site visit for the project. According to the weekly construction progress reports prepared by Basin Transload, construction was completed in the fall of 2014, therefore, the focus of the site visit was to assess reclamation and restoration activities along the disturbed right-of-way. The following summarizes our observations from the final site compliance inspection.

- Met with Ron Kroshus to review the finished grade and the progress of revegetation over the pipeline route, and including the erosion control measures constructed.
- Surface grades have been returned to preconstruction conditions and the land put back into agricultural production (row crops or grazing). Vegetation in pasture land has been established on 40 to 60 percent of the disturbed area. Please see the attached photos. Evidence indicates that seeding activities have taken place and that the area is in the process revegetating as planned.
- No significant incidents of erosion were observed.

**Future Activities and Recommendations:**

HEI will prepare a final inspection report that summarizes all findings and recommendations.

# Photos



Photo 1: North end of pipeline ROW.

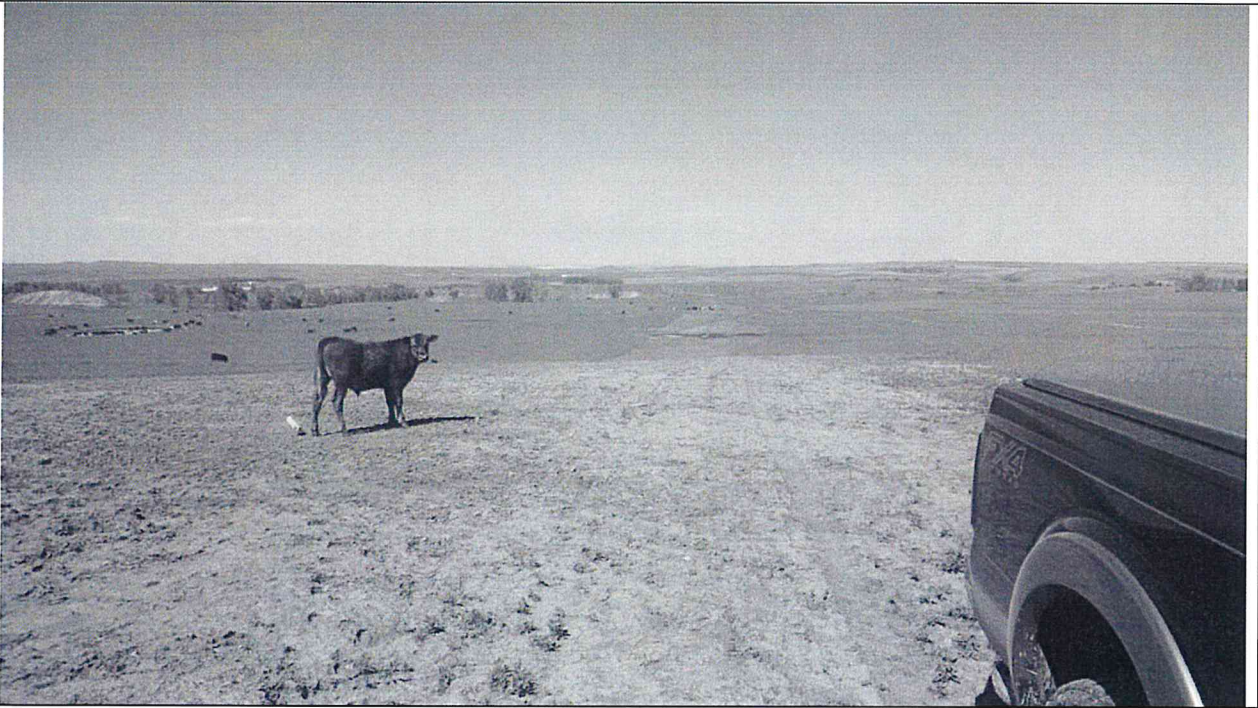


Photo 2: Livestock grazing over existing ROW.

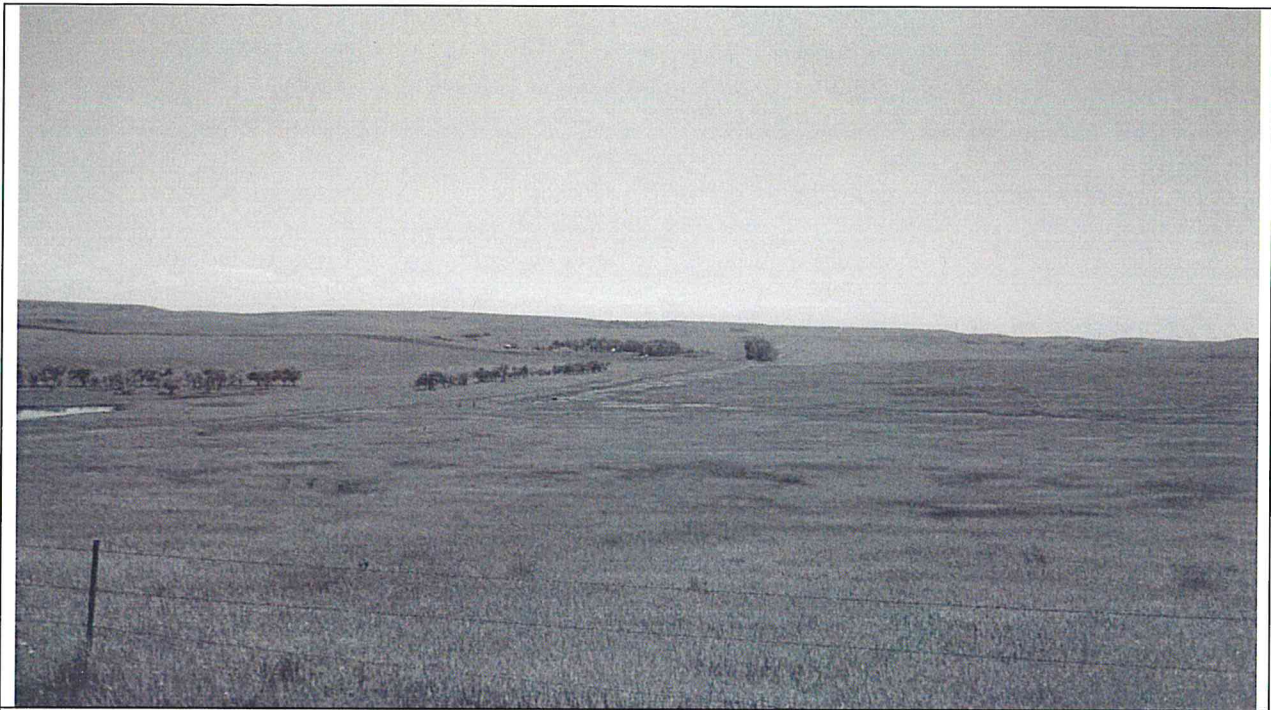


Photo 3: Pipeline ROW in the distance.



Photo 4: Intermittent revegetation.



Photo 5: Intermittent revegetation.

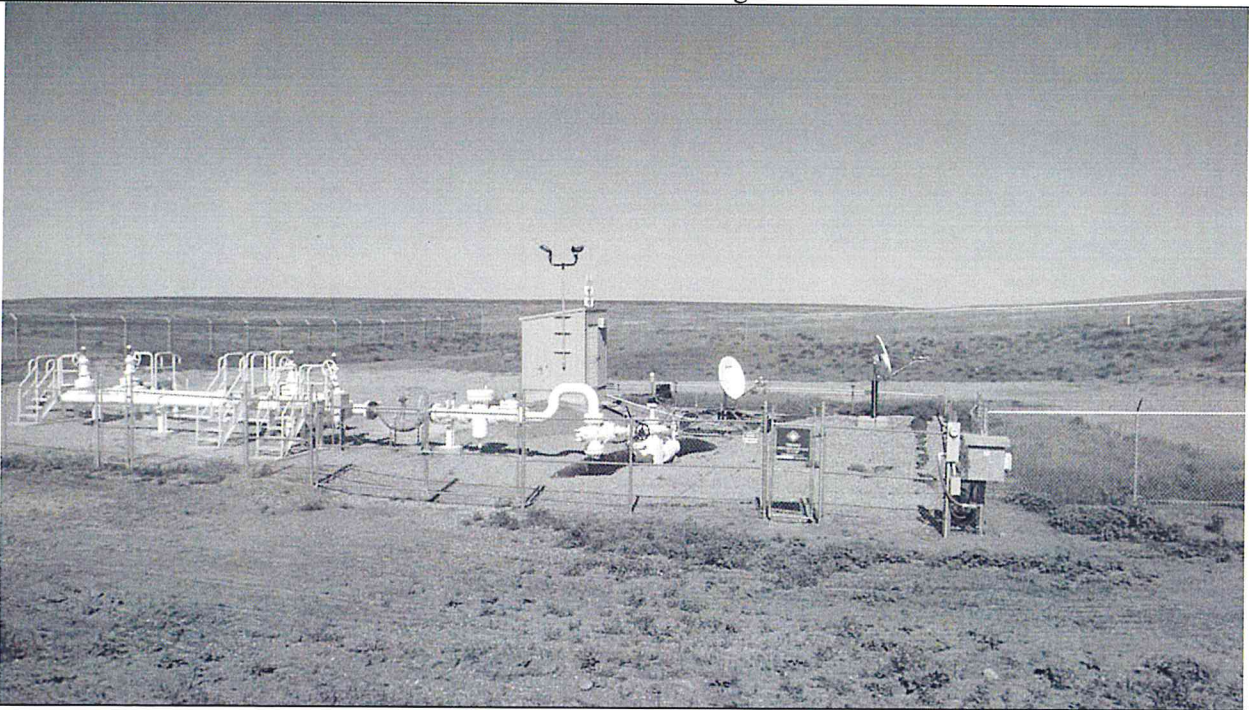


Photo 6: Valve station at south end of the project.

# Field Notes

# Basin - Transload Pipeline

Date <i>6-8-15</i>	Day
Hours Worked	
Working Days Charged	Total Working Days to Date
Reasons for Time Not Charged	

## Weather

	Temp	Wind	Sky	Precip	
AM					
PM	<i>80°F</i>				<i>Sunny</i>

**Contractor Job Safety Meetings/Briefing**     Yes     No

## Job Site Hazards/Concerns and Actions Taken


## Engineering Staff


## Work in Progress

<i>1625</i>	<i>Arrive @ tanks @ north end of pipeline</i>
	<i>Meet Ron</i>
<i>1735</i>	<i>Finished tour of pipeline. Surface contours have been returned. Some grass (40-60% cover) Cattle are grazing over Row and adjacent fields. No incidents of erosion noted.</i>
<i>1745</i>	<i>Leave site</i>

## Contractor's Labor Force

Superintendent:	Foreman:

## Contractor's Equipment Summary (include make and model)
