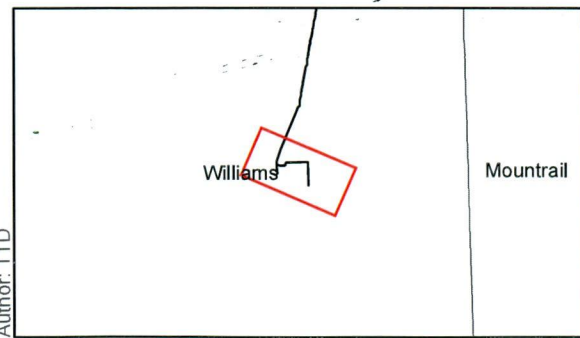




bing

Image courtesy of USCS © 2013 Microsoft Corporation © 2010 NAVTEQ © AND



○ MilePost	▨ Survey Boundary	 0 750 1,500 Feet 1:12,000	 
■ Hess Facilities	▭ Corridor (1 mile)		
— Segment B	▭ Federal Land		
— Segment E	▨ State Land		
— Segment C			

Source: ESRI Online and USFWS

**RTF Tie-in Pipeline Project**

Surveyed Corridor  
Williams County,  
North Dakota

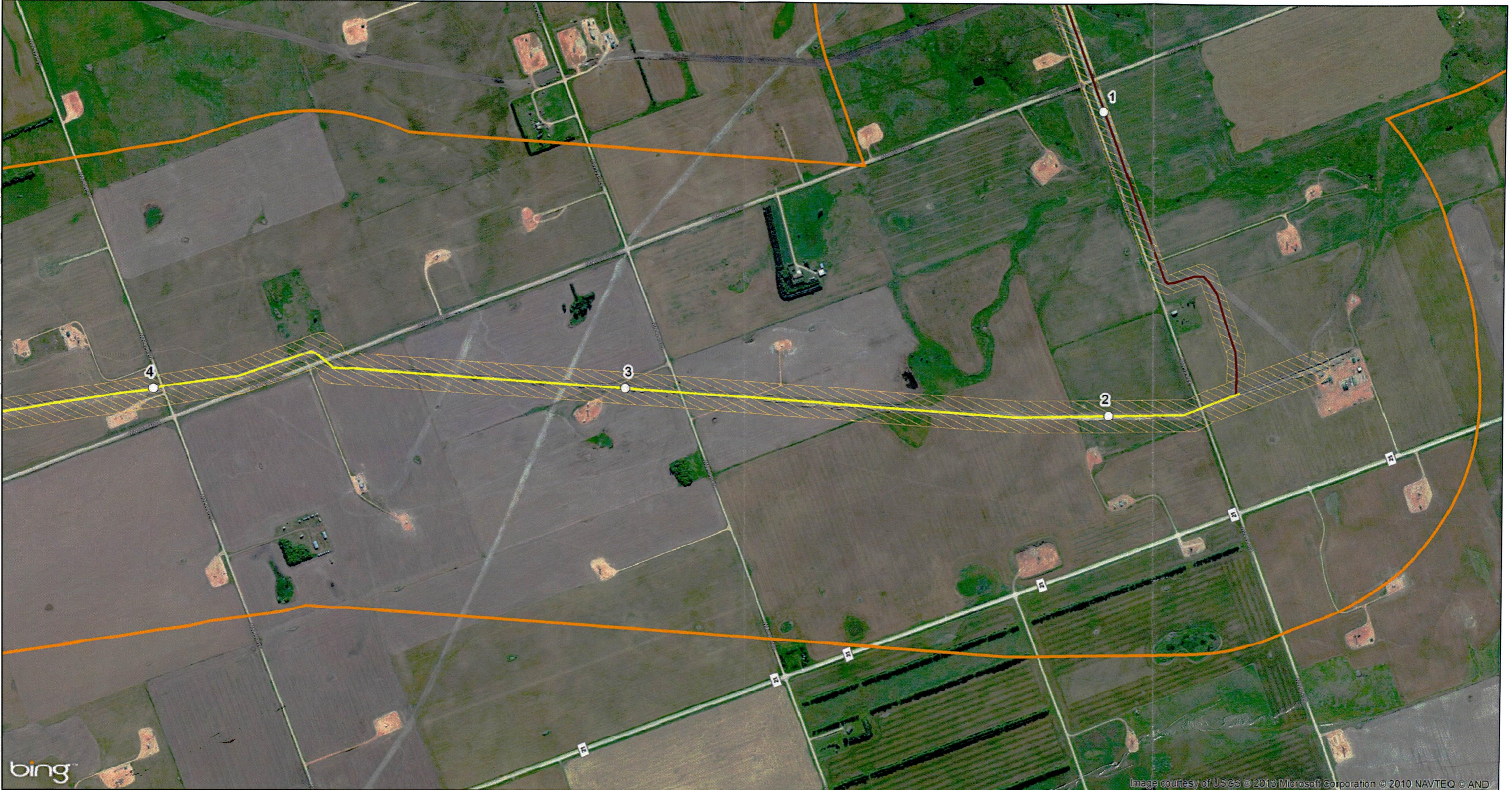
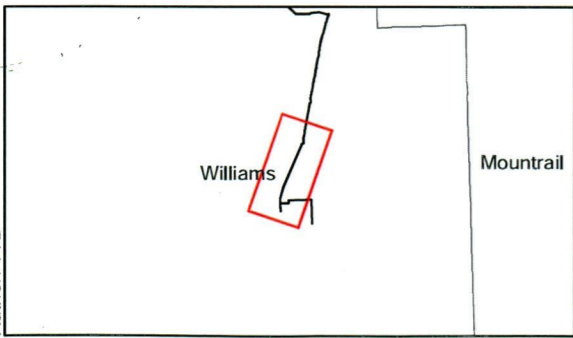
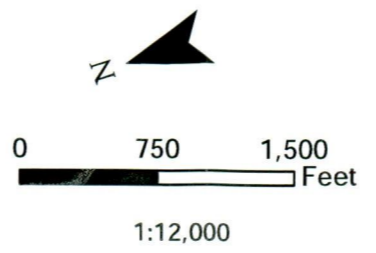


Image courtesy of USGS © 2013 Microsoft Corporation © 2010 NAVTEQ © AND

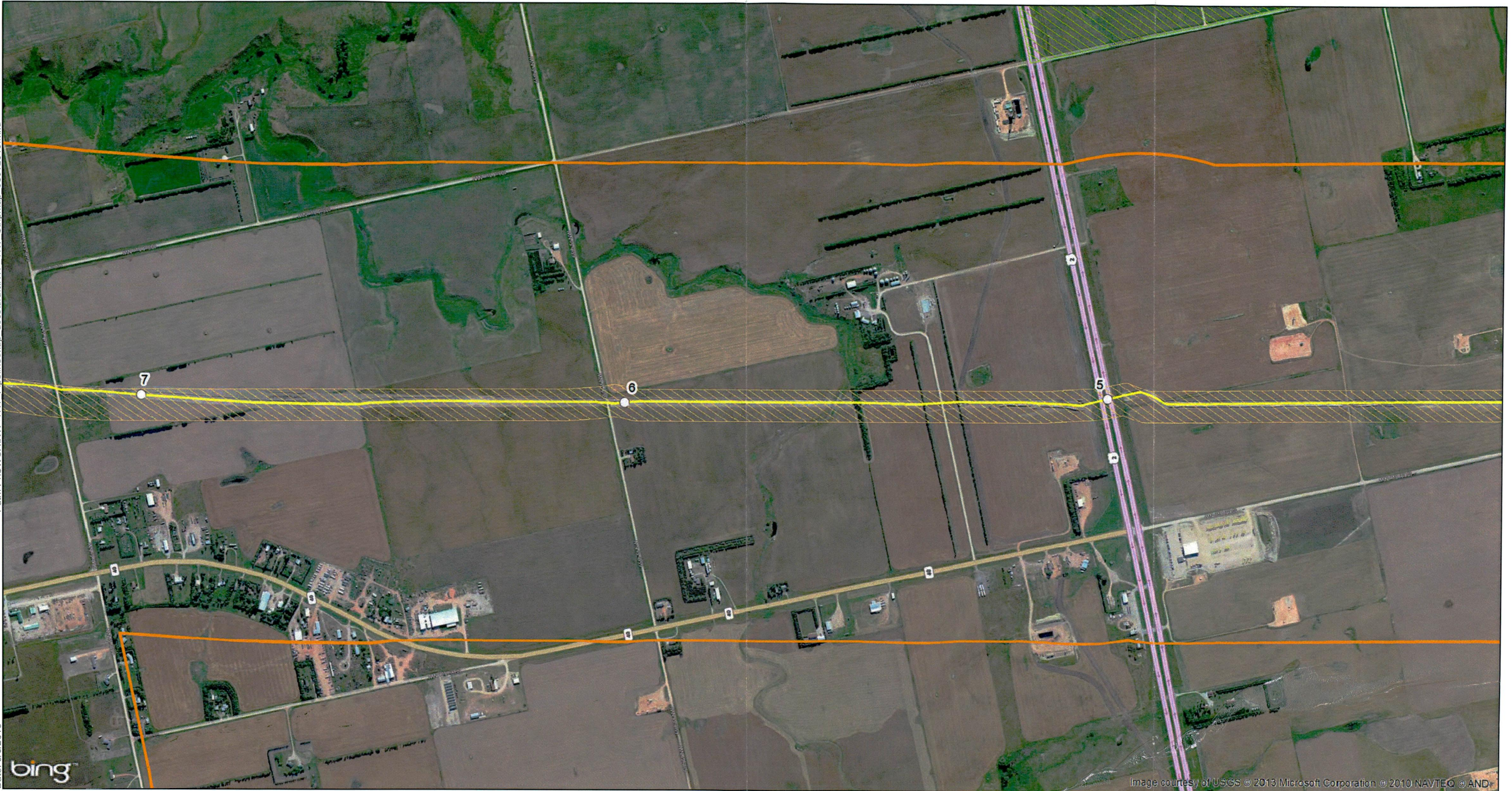


- MilePost
- Hess Facilities
- Segment B
- Segment E
- Segment C
- ▨ Survey Boundary
- ▭ Corridor (1 mile)
- ▭ Federal Land
- ▨ State Land

Source: ESRI Online and USFWS

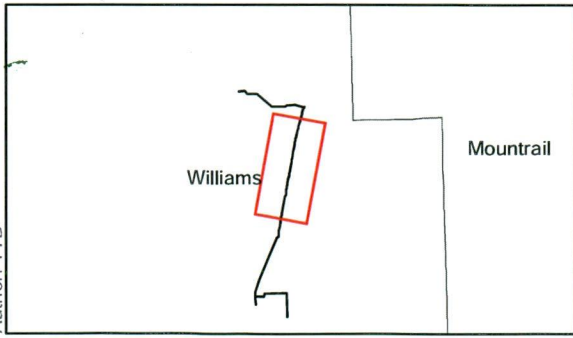


**RTF Tie-in Pipeline Project**  
 Surveyed Corridor  
 Williams County,  
 North Dakota



bing

Image courtesy of USGS © 2013 Microsoft Corporation © 2010 NAVTEO © AND



○ MilePost	▨ Survey Boundary
■ Hess Facilities	▭ Corridor (1 mile)
— Segment B	- - - Federal Land
— Segment E	▨ State Land
— Segment C	

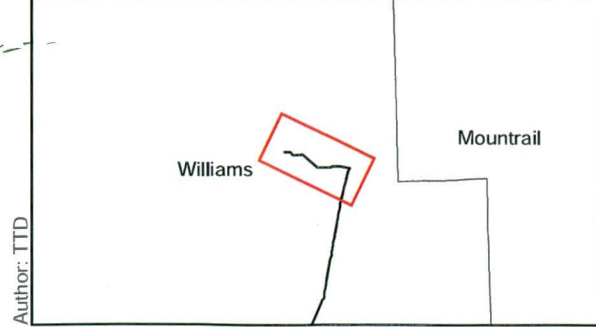
Source: ESRI Online and USFWS

0 750 1,500 Feet

1:12,000

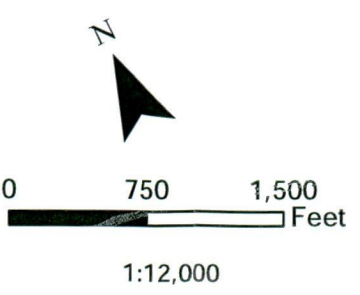
**RTF Tie-in Pipeline Project**

Surveyed Corridor  
Williams County,  
North Dakota



- MilePost
- Hess Facilities
- Segment B
- Segment E
- Segment C
- ▨ Survey Boundary
- ▭ Corridor (1 mile)
- ▨ Federal Land
- ▨ State Land

Source: ESRI Online and USFWS



**RTF Tie-in Pipeline Project**  
 Surveyed Corridor  
 Williams County,  
 North Dakota