

**Lein, Jerry R.**

---

**From:** Stephenson, Donna GRE-MG <dstephenson@GREnergy.com>  
**Sent:** Friday, January 18, 2013 4:45 PM  
**To:** Lein, Jerry R.  
**Cc:** Olsen, Eric GRE-MG  
**Subject:** RE: Information Request, Case No. PU-12-767  
**Attachments:** CHS Expansion Map 1 18 2013.pdf; CHS Transformer Layout 1 18 2013.pdf; CHS Substation Layout 1 18 2013.pdf; CHS Substation Oneline 1 18 2013.pdf

Hello Jerry,

This email responds to your information request below.

As I mentioned when we discussed the request, CHS is still working on determining the electric service needs for the CHS plant. We met with CHS earlier this week and they have not yet completed preliminary design, consequently the electric service needs remain an educated guess on our part.

The attachment titled "CHS Expansion Map" shows the conceptual layout of the facilities that would be constructed to serve CHS and DSA. The black lines are new facilities, the green lines are existing facilities. GRE would construct facilities from the substation north of Spiritwood Station, run them directly to the west to the industrial park. Within the industrial park, GRE will construct the substation described as the "CHS DSA Plant Substation." GRE will then run feeders to each of CHS and DSA. The voltages indicated on the drawing are typical for an industrial service, but we cannot verify the voltages of the various segments of the facilities without confirmation from CHS.

As I also mentioned, GRE's United Services Group performs this sort of design work on behalf of our distribution members and other distribution customers. If you would like to discuss the details of the conceptual documents attached, we would be happy to set up a call or an in-person meeting to discuss.

Also, we are providing our response directly to you, if you would like us to file the response in the case docket, please let me know. And of course, if you need any other information, please also let us know -

Donna  
763-445-5218

**From:** Lein, Jerry R. [<mailto:jlein@nd.gov>]  
**Sent:** Wednesday, January 09, 2013 1:22 PM  
**To:** Stephenson, Donna GRE-MG  
**Cc:** Olsen, Eric GRE-MG  
**Subject:** Information Request, Case No. PU-12-767

Dear Ms. Stephenson:

As we discussed over the telephone this afternoon, please provide a map type drawing showing facilities planned to serve the Spiritwood Energy Park. Please distinguish between all existing and proposed GRE and customer owned facilities. Please include operating voltages for each facility and the voltages at the metering points where each customer will take service.

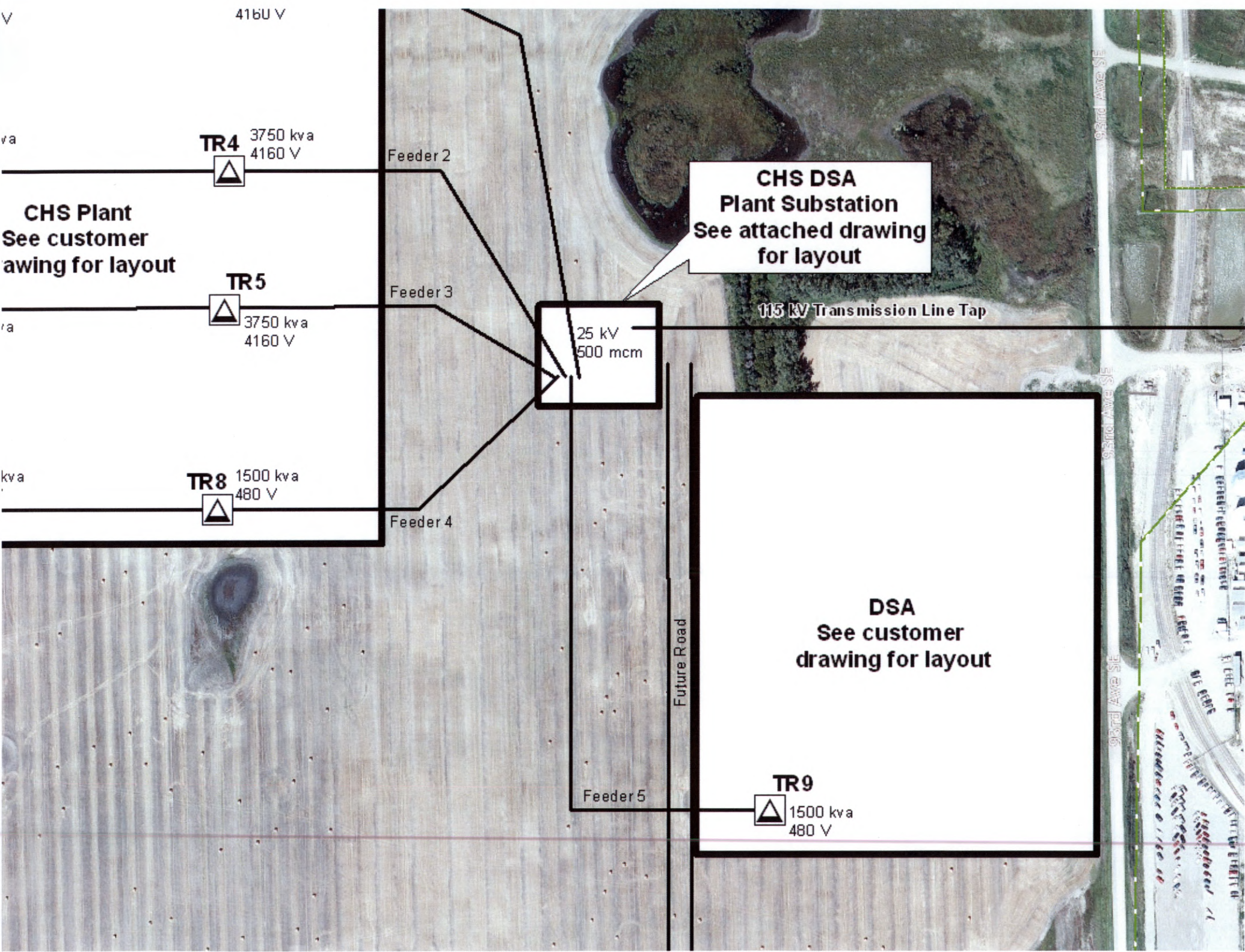
Please let me know if you have any questions regarding this request. Thank you.

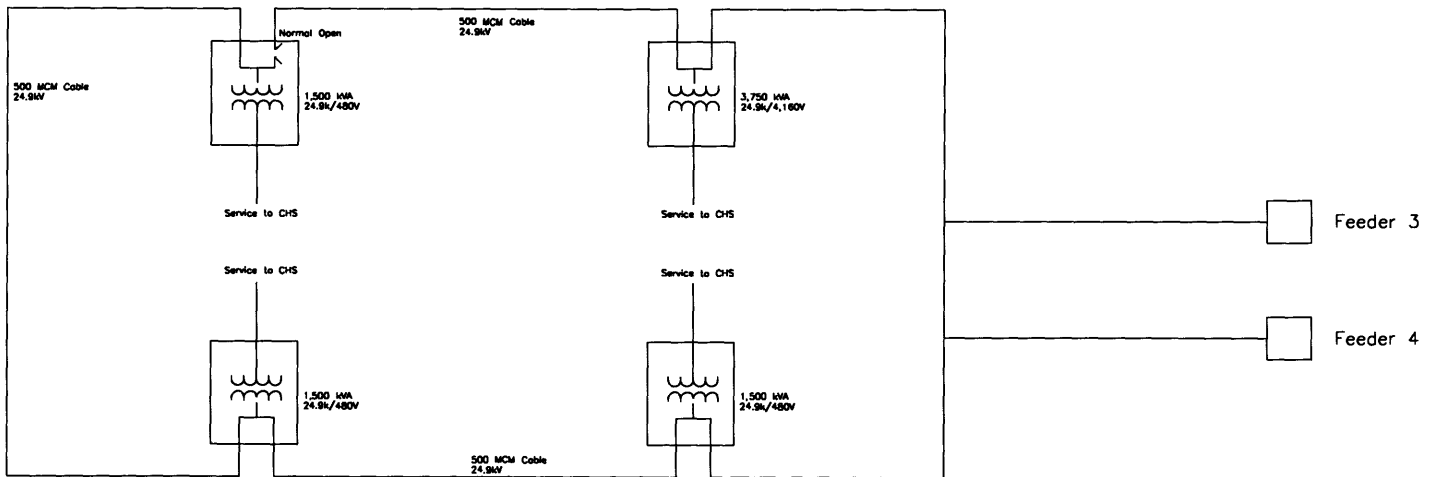
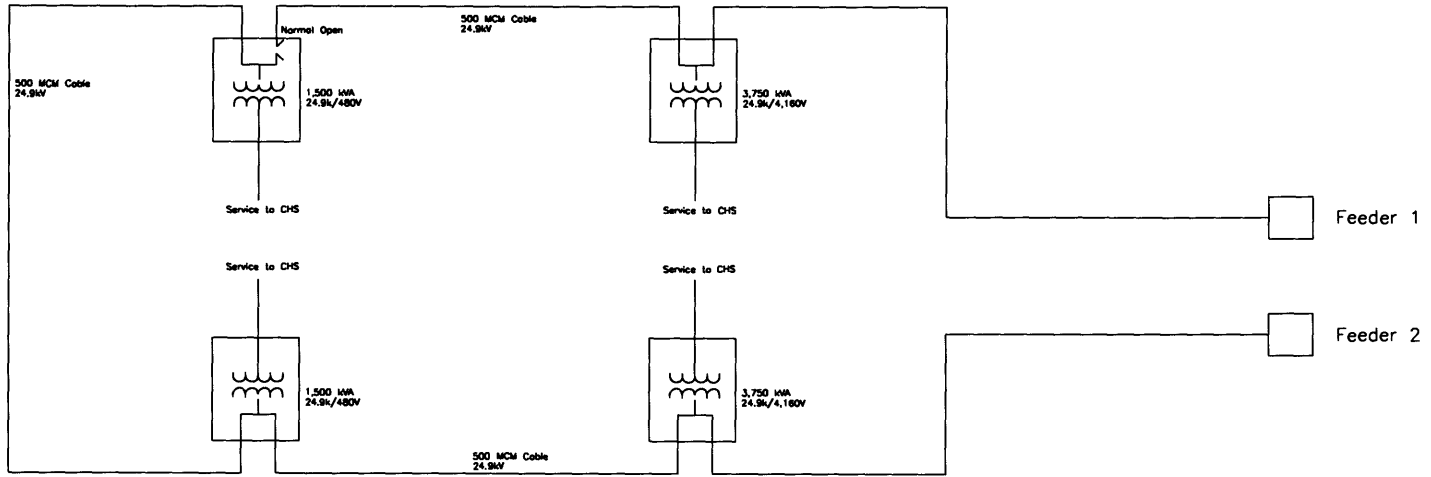
**Jerry Lein**  
**701 328-1035**

---

This transmission, email and any files transmitted with it, may be: (1) subject to the Attorney-Client Privilege, (2) an attorney work product, or (3) strictly confidential under federal or state law. If you are not the intended recipient of this message, you may not use, disclose, print, copy or disseminate this information. If you have received this transmission in error, notify the sender (only) and delete the message. This message may also be subject to disclosure under the North Dakota Open Records Laws.

**NOTICE TO RECIPIENT: The information contained in this message from Great River Energy and any attachments are confidential and intended only for the named recipient(s). If you have received this message in error, you are prohibited from copying, distributing or using the information. Please contact the sender immediately by return email and delete the original message.**

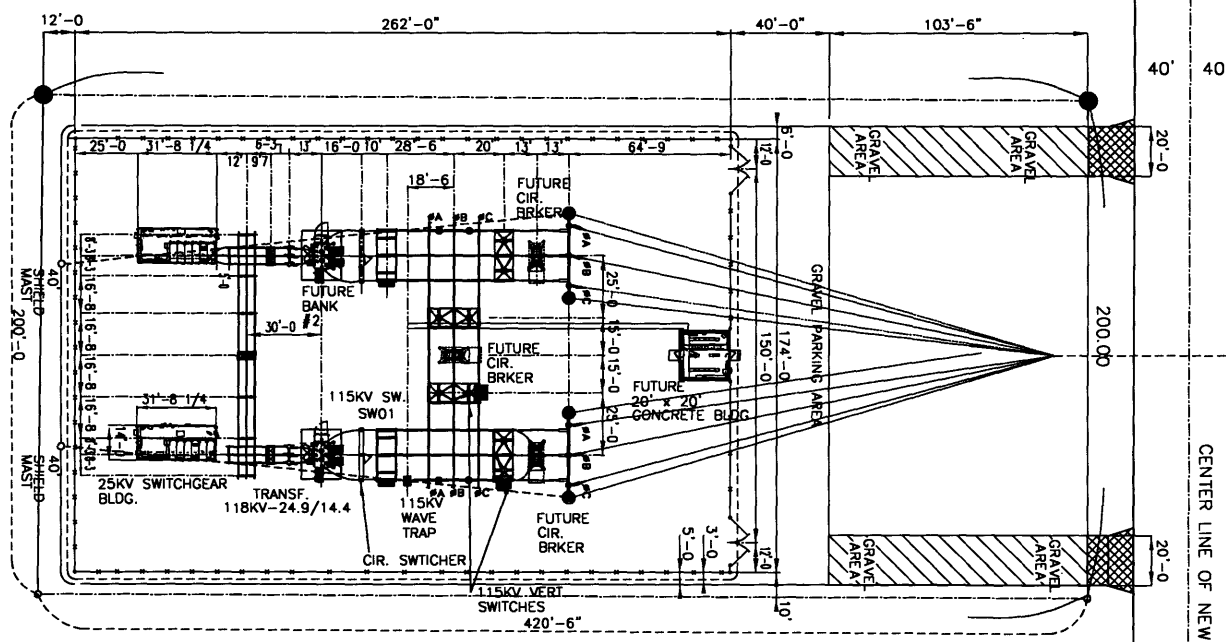




KIGRE SPRITWOOD/CHS/OSA SUB01001R00

DISCLOSURE OF THIS DOCUMENT TO A THIRD PARTY EXCLUSIVE OF DIRECT USE FOR OPERATION, MAINTENANCE OR NEW CONSTRUCTION IS SUBJECT TO WRITTEN PERMISSION FROM UNITED SERVICES GROUP.

<b>CHS PLANT</b>		WO NO.		REVISION	
ONE LINE DIAGRAM		XXXX		0	
CHS	DATE: 01-15-13	DRAWN BY: JAW		DRAWN/REVISION	
DISTR.	SCALE: NONE	CHECK BY:		DATE	
SUBSTATION	APP'D BY:	APP'D BY:		DATE	
XX	XX	XX		XX	
SHEET 2					

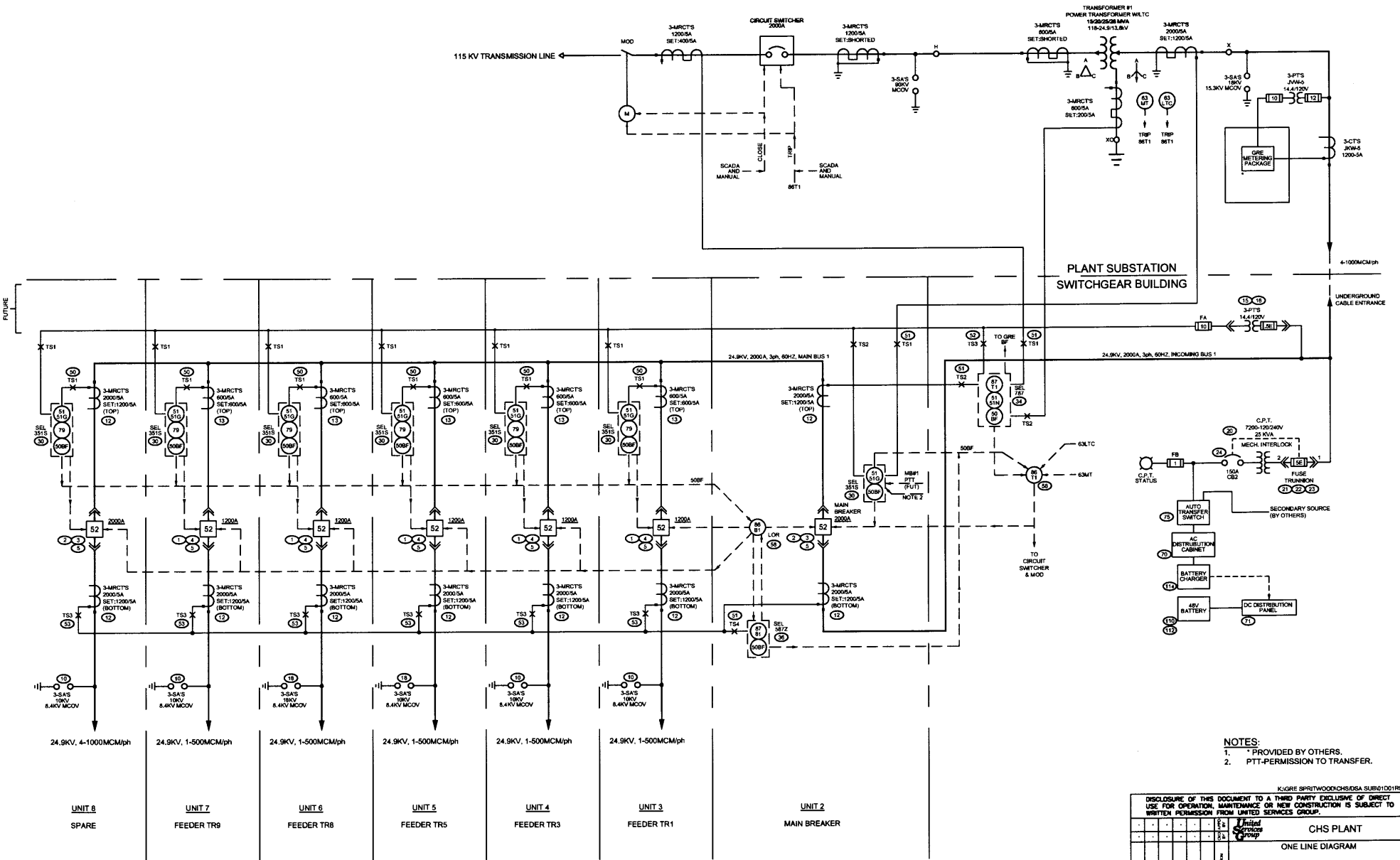


GRE 115KV TRANSMISSION LINE

CENTER LINE OF NEW PLANT ROAD

K5GRE SPRINTWOODCHSISA PLANT10001901

DISCLOSURE OF THIS DOCUMENT TO A THIRD PARTY EXCLUSIVE OF DIRECT USE FOR OPERATION, MAINTENANCE OR NEW CONSTRUCTION IS SUBJECT TO WRITTEN PERMISSION FROM UNITED SERVICES GROUP.		CHS PLANT SUBSTATION	
PLOT PLAN		PLOT PLAN	
DATE: 01-15-2013	W.O. NO. XXXX	REVISION: 1	
SCALE: 1" = 30'-0"	DRAWN BY: JAN	CHECKED BY: XXXX-10D	
PROJECT: CHS PLANT SUBSTATION	APP'D BY: XX	SHEET: 1	



- NOTES:  
 1. PROVIDED BY OTHERS.  
 2. PTT-PERMISSION TO TRANSFER.

K:\GREG SPRITWOOD\CHS\GSA SUBS\1021R00

DISCLOSURE OF THIS DOCUMENT TO A THIRD PARTY EXCLUSIVE OF DIRECT USE FOR OPERATION, MAINTENANCE OR NEW CONSTRUCTION IS SUBJECT TO WRITTEN PERMISSION FROM UNITED SERVICES GROUP.

CHS PLANT		ONE LINE DIAGRAM	
DATE: 01-15-13	W/D NO: XXXX	SCALE: NONE	REVISION: 0
DRAWN BY: JAW	DESIGNED BY: JAW	CHECKED BY: JAW	DRAWING NUMBER: XX-01D
APP'D BY: XX	DATE: 01-15-13	BY: JAW	DATE: 01-15-13