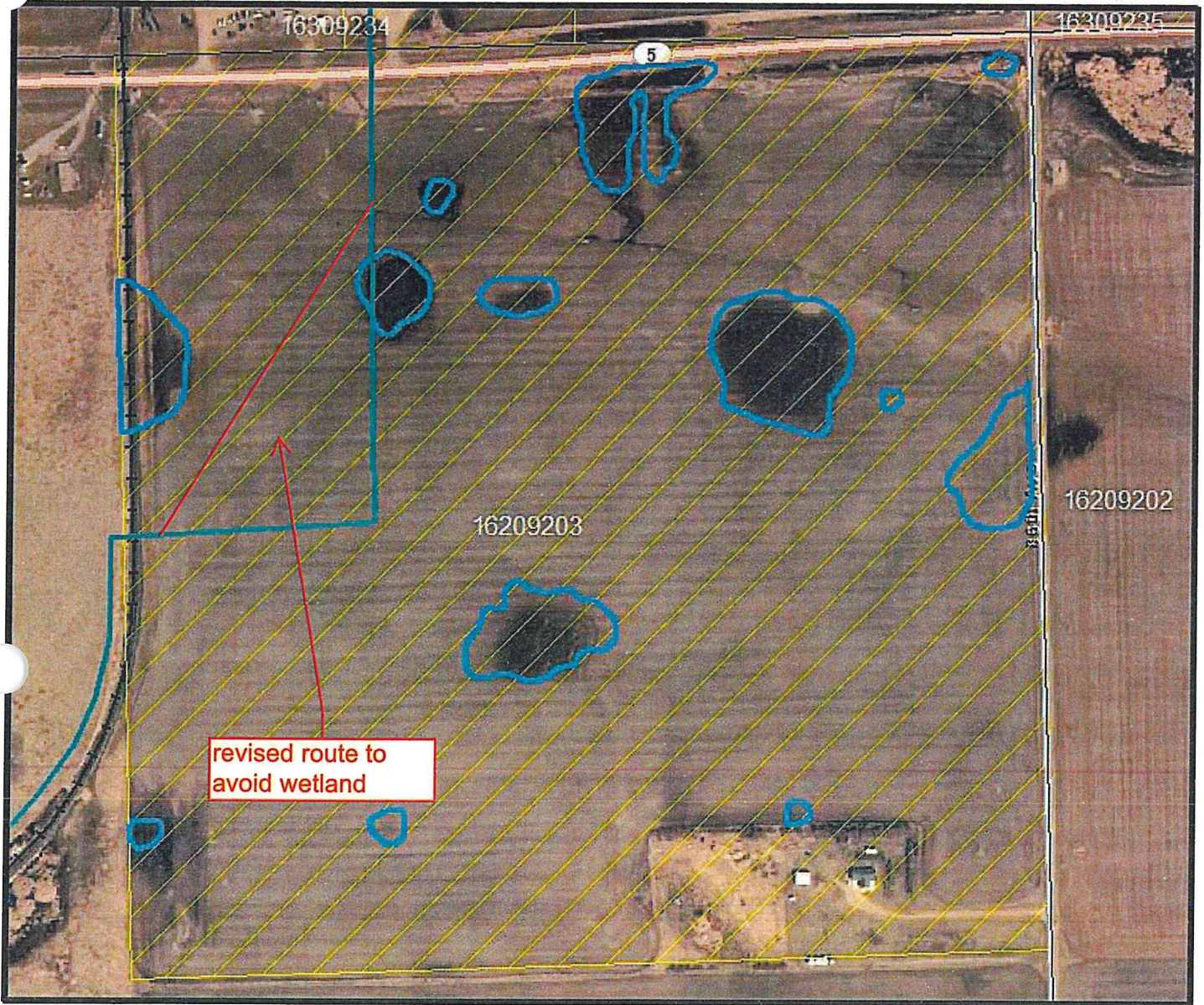


T. 162 N. R. 92 W. Section: 3 NE/4
 Burke, 253X





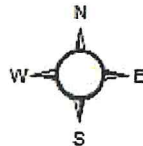
1 in = 0.08 miles

Aerial Photography: 2012
 Map Prepared: 10/17/2012




1 inch = 431 feet

OIL & GAS INTEREST

-  Lignite_Pipeline_20121012
-  Wetlands



FWS EASEMENT

-  Grassland & Wetland Easement
-  Grassland Easement
-  Wetland Easement

The USFWS makes no claim as to the accuracy or completeness of the displayed information. Shaded areas depicting USFWS WPA fee and easement lands are for illustrative purposes only and do not represent legal boundaries or in the case of easements, the acreage of wetland or grassland resources included in the easement contract. The quality of the data used to develop digital boundaries is subject to change as higher quality data becomes available. For more detailed information, contact the USFWS Realty Offices located in Bismarck, North Dakota or Great Falls, Montana.

27 PU-12-775 Filed: 12/28/2012 Pages: 1
 Exhibit 4

Basin Transload, LLC

EXHIBIT
 4