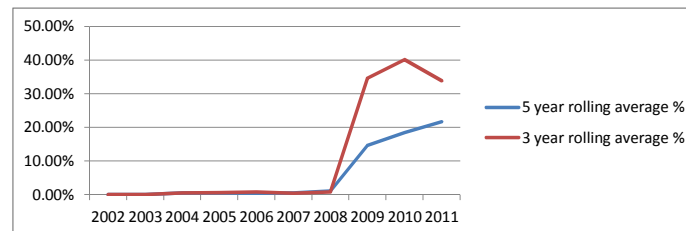
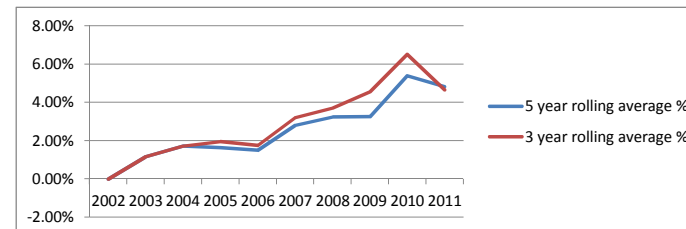


Snavely King Majoros & Associates, Inc.
 Northern States Power
 Comparison of Cost of Removal to Plant Additions

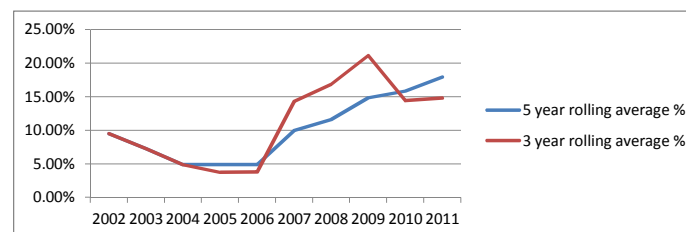
	Additions	Cost of Removal	%	3 year rolling average %	5 year rolling average %
361					
Distribution Structures & Improvements					
2002	\$542,473	-	0.00%	0.00%	0.00%
2003	\$2,900,838	379	0.01%	0.01%	0.01%
2004	\$1,233,274	25,206	2.04%	0.55%	0.55%
2005	\$351,442	-	0.00%	0.57%	0.51%
2006	\$2,003,052	3,203	0.16%	0.79%	0.41%
2007	\$378,429	7,907	2.09%	0.41%	0.53%
2008	\$1,034,182	16,808	1.63%	0.82%	1.06%
2009	\$305,720	571,354	186.89%	34.69%	14.71%
2010	\$648,129	210,579	32.49%	40.18%	18.53%
2011	\$1,368,931	6,899	0.50%	33.96%	21.78%



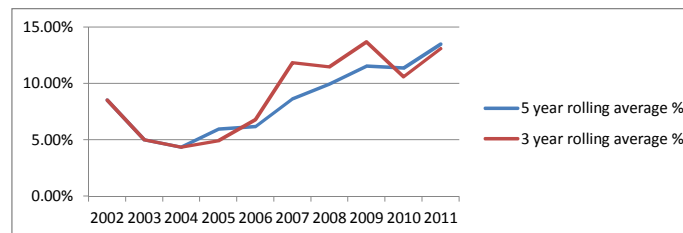
	Additions	Cost of Removal	%	3 year rolling average %	5 year rolling average %
362 Distribution Station Equipment					
2002	\$9,976,930	(890)	-0.01%	-0.01%	-0.01%
2003	\$24,632,608	402,144	1.63%	1.16%	1.16%
2004	\$11,642,680	389,606	3.35%	1.71%	1.71%
2005	\$15,747,994	216,410	1.37%	1.94%	1.62%
2006	\$22,270,631	257,631	1.16%	1.74%	1.50%
2007	\$17,995,522	1,316,458	7.32%	3.20%	2.80%
2008	\$21,827,575	719,927	3.30%	3.69%	3.24%
2009	\$17,642,244	586,428	3.32%	4.56%	3.24%
2010	\$13,878,720	2,165,848	15.61%	6.51%	5.39%
2011	\$34,753,048	332,428	0.96%	4.65%	4.83%



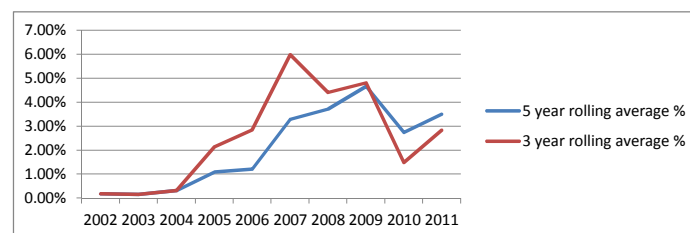
	Additions	Cost of Removal	%	3 year rolling average %	5 year rolling average %
364					
Distribution Poles, Towers & Fixtures					
2002	\$8,351,623	795,800	9.53%	9.53%	9.53%
2003	\$8,988,593	463,689	5.16%	7.26%	7.26%
2004	\$14,146,275	282,566	2.00%	4.90%	4.90%
2005	\$9,957,651	488,383	4.90%	3.73%	4.90%
2006	\$13,137,759	647,767	4.93%	3.81%	4.91%
2007	\$12,982,613	4,027,184.12	31.02%	14.31%	9.98%
2008	\$12,438,421	1,819,603.36	14.63%	16.84%	11.59%
2009	\$10,854,006	1,827,129.46	16.83%	21.15%	14.84%
2010	\$12,716,686	1,538,628.63	12.10%	14.40%	15.87%
2011	\$17,226,437	2,664,541.08	15.47%	14.78%	17.94%



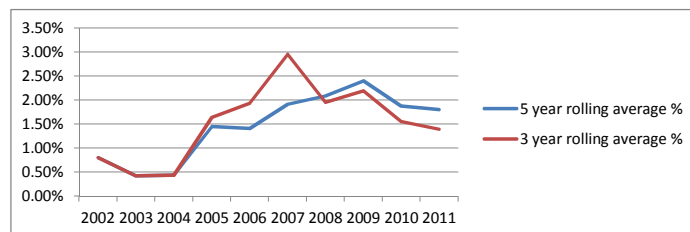
	Additions	Cost of Removal	%	3 year rolling average %	5 year rolling average %
365 Distribution Overhead Conductors & Devices					
2002	\$13,790,170	1,177,045	8.54%	8.54%	8.54%
2003	\$9,864,497	8,623	0.09%	5.01%	5.01%
2004	\$12,122,786	372,909	3.08%	4.36%	4.36%
2005	\$13,076,697	1,348,786	10.31%	4.93%	5.95%
2006	\$18,056,894	1,216,234	6.74%	6.79%	6.16%
2007	\$16,167,752	3,036,373.43	18.78%	11.84%	8.63%
2008	\$17,314,845	1,662,865.20	9.60%	11.48%	9.95%
2009	\$14,524,543	1,876,982.35	12.92%	13.70%	11.55%
2010	\$15,793,842	1,512,856.92	9.58%	10.61%	11.37%
2011	\$16,894,506	2,802,065.45	16.59%	13.11%	13.50%



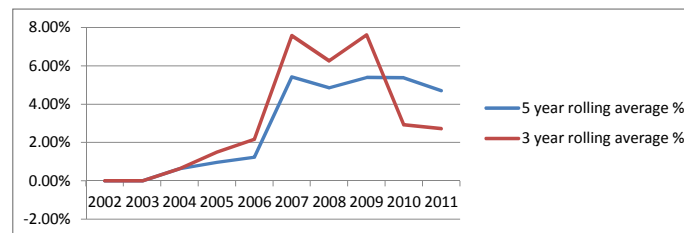
	Additions	Cost of Removal	%	3 year rolling average %	5 year rolling average %
366 Distribution Underground Conduit					
2002	\$30,656,661	54,777	0.18%	0.18%	0.18%
2003	\$7,646,754	2,981	0.04%	0.15%	0.15%
2004	\$11,114,292	93,947	0.85%	0.31%	0.31%
2005	\$7,325,897	463,130	6.32%	2.15%	1.08%
2006	\$6,418,529	150,174	2.34%	2.85%	1.21%
2007	\$5,608,311	544,491.27	9.71%	5.98%	3.29%
2008	\$6,457,853	120,236.12	1.86%	4.41%	3.72%
2009	\$5,860,997	197,695.85	3.37%	4.81%	4.66%
2010	\$16,901,120	117,180.54	0.69%	1.49%	2.74%
2011	\$13,274,893	706,087.49	5.32%	2.83%	3.50%



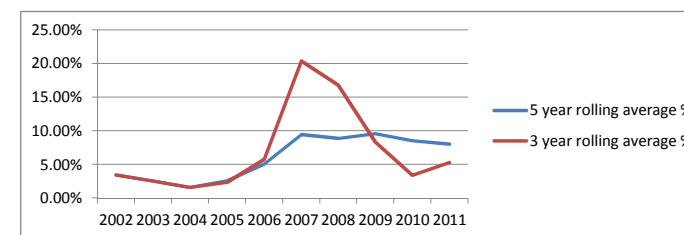
	Additions	Cost of Removal	%	3 year rolling average %	5 year rolling average %
367 Distribution Underground Conductor & Devices					
2002	\$33,900,692	272,122	0.80%	0.80%	0.80%
2003	\$32,312,573	6,220	0.02%	0.42%	0.42%
2004	\$41,265,574	190,980	0.46%	0.44%	0.44%
2005	\$40,243,448	1,669,831	4.15%	1.64%	1.45%
2006	\$41,390,901	519,822	1.26%	1.94%	1.41%
2007	\$34,720,554	1,246,596	3.59%	2.95%	1.91%
2008	\$41,883,439	541,188	1.29%	1.96%	2.09%
2009	\$33,399,328	624,811	1.87%	2.19%	2.40%
2010	\$28,231,301	440,597	1.56%	1.55%	1.88%
2011	\$37,060,155	310,599	0.84%	1.39%	1.80%



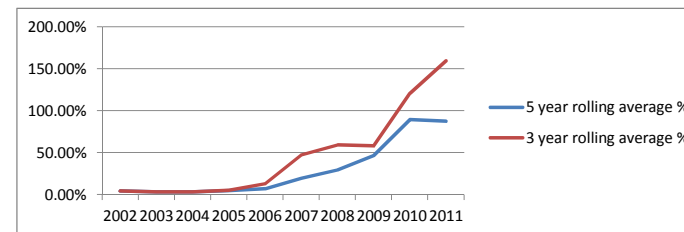
	Additions	Cost of Removal	%	3 year rolling average %	5 year rolling average %
368.01 Distribution Line Transformers Amortized					
2002	\$17,508,917	45	0.00%	0.00%	0.00%
2003	\$8,589,849	(1,881)	-0.02%	-0.01%	-0.01%
2004	\$11,385,688	238,090	2.09%	0.63%	0.63%
2005	\$11,554,035	236,717	2.05%	1.50%	0.96%
2006	\$12,036,476	285,212	2.37%	2.17%	1.24%
2007	\$15,511,808	2,444,464	15.76%	7.59%	5.42%
2008	\$18,180,423	131,949	0.73%	6.26%	4.86%
2009	\$124,990	-	0.00%	7.62%	5.40%
2010	\$32,485,079	1,351,824	4.16%	2.92%	5.38%
2011	\$16,994,720	1,297	0.01%	2.73%	4.72%



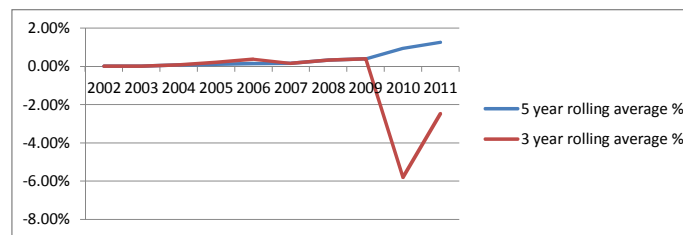
	Additions	Cost of Removal	%	3 year rolling average %	5 year rolling average %
368.02 Distribution Line Capacitors Amortized					
2002	\$453,679	15,705	3.46%	3.46%	3.46%
2003	\$173,000	143	0.08%	2.53%	2.53%
2004	\$1,272,006	14,090	1.11%	1.58%	1.58%
2005	\$371,243	28,728	7.74%	2.37%	2.58%
2006	\$434,821	77,590	17.84%	5.79%	5.04%
2007	\$308,204	120,936	39.24%	20.39%	9.44%
2008	\$553,312	19,204	3.47%	16.80%	8.86%
2009	\$1,480,985	55,287	3.73%	8.34%	9.58%
2010	\$594,064	14,377	2.42%	3.38%	8.52%
2011	\$524,132	67,746	12.93%	5.29%	8.02%



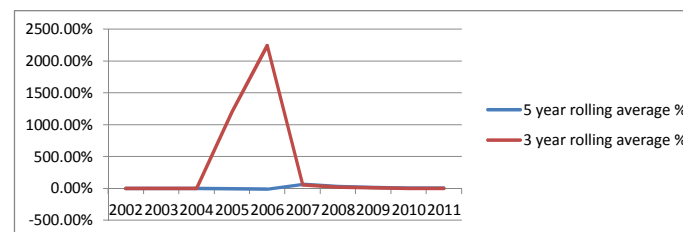
	Additions	Cost of Removal	%	3 year rolling average %	5 year rolling average %
369.01 Distribution Services - Overhead					
2002	\$5,947,470	259,969	4.37%	4.37%	4.37%
2003	\$3,392,768	45,729	1.35%	3.27%	3.27%
2004	\$3,544,148	124,165	3.50%	3.34%	3.34%
2005	\$1,764,215	285,411	16.18%	5.23%	4.88%
2006	\$773,656	375,647	48.55%	12.91%	7.07%
2007	\$1,680,783	1,336,427	79.51%	47.35%	19.43%
2008	\$1,488,003	617,067	41.47%	59.08%	29.61%
2009	\$1,334,655	669,233	50.14%	58.24%	46.64%
2010	(\$1,293,619)	557,916	-43.13%	120.61%	89.28%
2011	\$1,088,111	574,424	52.79%	159.55%	87.37%



	Additions	Cost of Removal	%	3 year rolling average %	5 year rolling average %
369.02 Distribution Services - Underground					
2002	\$24,207,728	2,994	0.01%	0.01%	0.01%
2003	\$9,643,558	397	0.00%	0.01%	0.01%
2004	\$8,456,761	29,045	0.34%	0.08%	0.08%
2005	\$6,712,347	20,900	0.31%	0.20%	0.11%
2006	\$5,853,249	29,724	0.51%	0.38%	0.15%
2007	\$7,898,947	(16,799)	-0.21%	0.17%	0.16%
2008	\$5,607,968	50,960	0.91%	0.33%	0.33%
2009	\$900,752	22,993	2.55%	0.40%	0.40%
2010	(\$8,242,976)	26,478	-0.32%	-5.79%	0.94%
2011	\$3,672,638	40,934	1.11%	-2.46%	1.27%



	Additions	Cost of Removal	%	3 year rolling average %	5 year rolling average %
370 Distribution Meters					
2002	(\$8,707,800)	45	0.00%	0.00%	0.00%
2003	\$5,475	(1,881)	-34.35%	0.02%	0.02%
2004	\$4,163	238,090	5718.98%	-2.72%	-2.72%
2005	\$29,695	236,717	797.15%	1202.34%	-5.46%
2006	\$0	285,212	0.00%	2244.69%	-8.75%
2007	\$2,356,563	789,129	33.49%	54.94%	64.58%
2008	\$2,743,560	-	0.00%	21.07%	30.17%
2009	\$5,103,326	-	0.00%	7.73%	12.81%
2010	\$23,828,343	493,066	2.07%	1.56%	4.61%
2011	\$3,215,539	-	0.00%	1.53%	3.44%



	Additions	Cost of Removal	%	3 year rolling average %	5 year rolling average %
373 Distribution Street Lighting & Signal Systems					
2002	\$2,381,803	257,437	10.81%	10.81%	10.81%
2003	\$1,066,918	(845)	-0.08%	7.44%	7.44%
2004	\$3,002,968	24,804	0.83%	4.36%	4.36%
2005	\$1,735,533	58,178	3.35%	1.41%	4.15%
2006	\$3,332,821	296,301	8.89%	4.70%	5.52%
2007	\$2,730,212	969,243	35.50%	16.97%	11.36%
2008	\$1,992,581	258,771	12.99%	18.92%	12.56%
2009	\$2,167,866	363,620	16.77%	23.10%	16.27%
2010	\$1,601,884	397,877	24.84%	17.71%	19.33%
2011	\$1,672,129	570,644	34.13%	24.48%	25.19%

