

Hamre, John G.

From: Hamre, John G.
Sent: Thursday, May 29, 2014 8:04 AM
To: Hamre, John G.
Subject: FW: AVS NGP seed mix request
Attachments: DGC TO AVS GAS LINE Coteau Coords-Seeding.pdf; DGC TO AVS GAS LINE Coteau Coords-Seeding (2).pdf

Importance: High

PU-13-22

From: Kevin Solie [<mailto:KSolie@bepc.com>]
Sent: Tuesday, May 27, 2014 2:58 PM
To: Prescott, Julie S.
Subject: AVS NGP seed mix request

Julie,

The areas are approximately 1.5 acres for the Stockpile mix and 29.3 acres for the Hayland mix. The attached air photos show the relative locations for using the proposed seed mixes. Again, all we are trying to do is keep the seeding consistent with Coteau's existing permit.

Please contact me if you have any further questions.

Thanks,

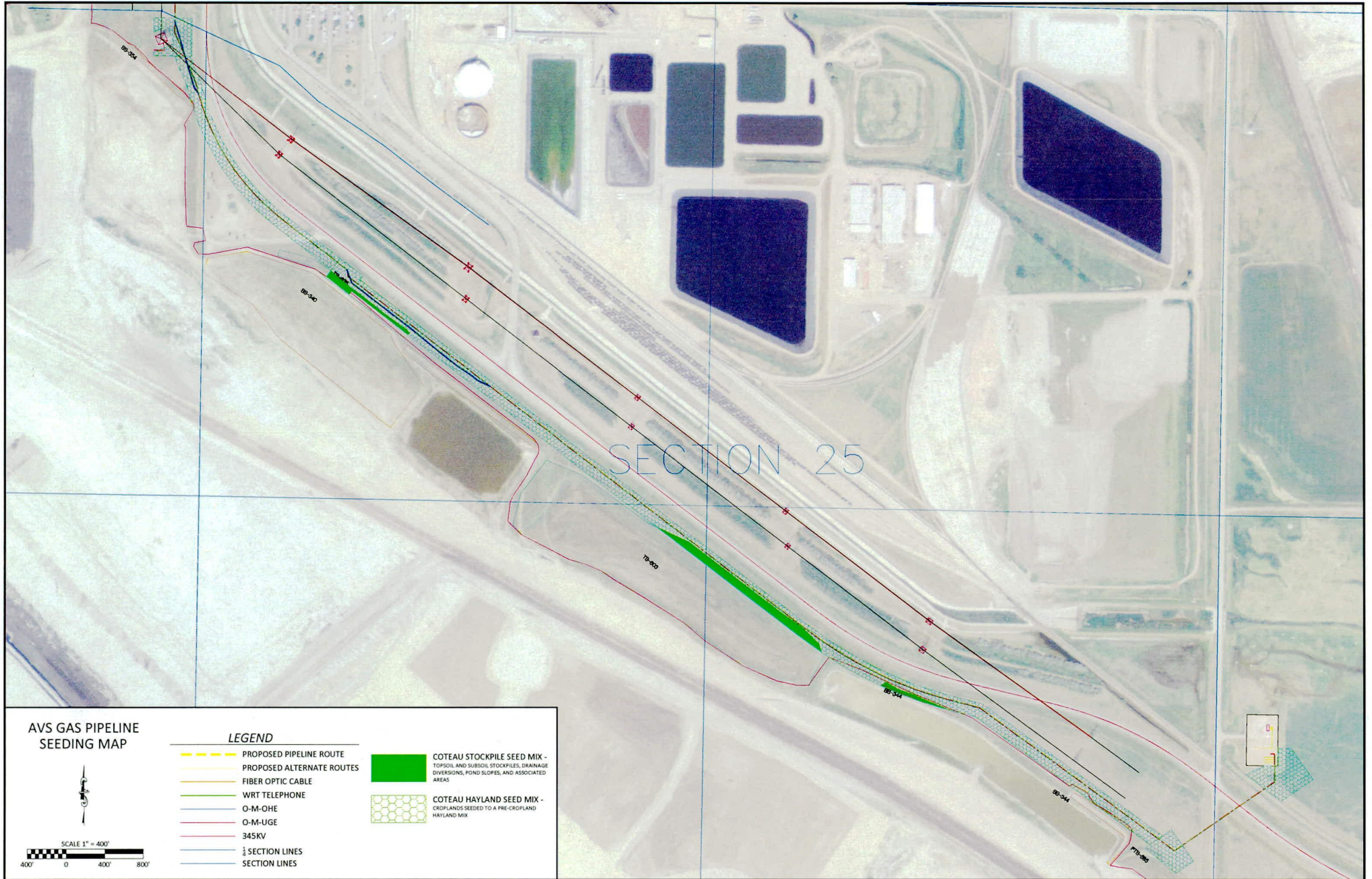
KLS

Kevin L. Solie, P.E.
Senior Water Quality/Waste Management Coordinator
Basin Electric Power Cooperative
1717 East Interstate Ave
Bismarck, North Dakota 58503

Direct Line: 701.557.5495
Cell: 701.202.5096

This transmission, email and any files transmitted with it, may be: (1) subject to the Attorney-Client Privilege, (2) an attorney work product, or (3) strictly confidential under federal or state law. If you are not the intended recipient of this message, you may not use, disclose, print, copy or disseminate this information. If you have received this transmission in error, notify the sender (only) and delete the message. This message may also be subject to disclosure under the North Dakota Open Records Laws.

81 **PU-13-22** Filed: 5/29/2014 Pages: 3
Air photos of locations for proposed seed mixes

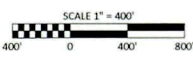


SECTION 25

AVS GAS PIPELINE SEEDING MAP

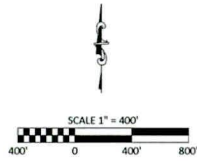
LEGEND

- PROPOSED PIPELINE ROUTE
- PROPOSED ALTERNATE ROUTES
- FIBER OPTIC CABLE
- WRT TELEPHONE
- O-M-OHE
- O-M-Uge
- 345KV
- SECTION LINES
- SECTION LINES
- COTEAU STOCKPILE SEED MIX - TOPSOIL AND SUBSOIL STOCKPILES, DRAINAGE DIVERSIONS, POND SLOPES, AND ASSOCIATED AREAS
- ▨ COTEAU HAYLAND SEED MIX - CROPLANDS SEEDED TO A PRE-CROPLAND HAYLAND MIX





AVS GAS PIPELINE SEEDING MAP



LEGEND

- PROPOSED PIPELINE ROUTE
 - PROPOSED ALTERNATE ROUTES
 - FIBER OPTIC CABLE
 - WRT TELEPHONE
 - O-M-OHE
 - O-M-UGE
 - 345KV
 - ½ SECTION LINES
 - SECTION LINES
-
- COTEAU STOCKPILE SEED MIX - TOPSOIL AND SUBSOIL STOCKPILES, DRAINAGE DIVERSIONS, POND SLOPES, AND ASSOCIATED AREAS
 - COTEAU HAYLAND SEED MIX - CROP LANDS SEED TO A PRE-CROPLAND HAYLAND MIX