



P.O. Box 13200 • Grand Forks, ND 58208-3200
1822 Mill Road • Grand Forks, ND 58203

Phone (701) 795-4000
www.minnkota.com

June 28, 2013

Darrell Nitschke, Executive Director
North Dakota Public Service Commission
600 East Boulevard, Dept. 408
Bismarck, ND 58505-0480



RE: Center to Mandan 230 kV Transmission Line Rebuild
Certification Pursuant to N.D. Century Code 49-22-03(3)(a)(3)

Dear Mr. Nitschke:

Minnkota Power Cooperative, Inc. has been analyzing its transmission system in response to "Recommendation to Industry (Consideration of Actual Field Conditions in Determination of Facility Ratings), dated October 2010, by the North American Electric Reliability Corporation (NERC). The results of this analysis revealed multiple spans of the transmission line which do not meet the minimum clearance requirements as specified by the 2007 National Electric Safety Code. Additionally, Minnkota has conducted load flow studies which indicated that the present transmission line rating would be exceeded under certain operating conditions. Therefore, Minnkota has decided to rebuild this line at its existing operating voltage, to eliminate the clearance and potential operating problems.

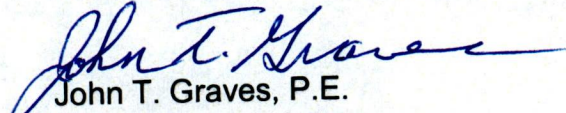
This 21.67 mile long transmission line was constructed prior to April 9, 1975. The rebuild project is schedule to start in August 2013, and to be completed by the end of December 2013. The project will take place within the existing transmission line right-of-way. (See enclosed figures.)

In accordance with North Dakota Century Code 49-22-03 (3)(a)(3), please find enclosed a notarized certification indicating that the rebuild of this transmission line will not affect any known exclusion or avoidance areas as defined by N.D.A.C. 69-06-08-02(1) and (2), and that Minnkota will comply with all applicable conditions and protections in siting laws and rules and commission orders previously issued for any part of this facility.

Should you have any questions concerning this project, please contact me at 701-795-4221 or at jgraves@minnkota.com.

Yours truly,

MINNKOTA POWER COOPERATIVE, INC.


John T. Graves, P.E.
Environmental Manager

Enclosures

C: Jerry Lein, ND PSC
Robert (Mac) McLennan w/o figures
John Thompson

Certification Pursuant to N.D. Century Code 49-22-03(3)(a)(3)

Center to Mandan 230 kV Transmission Line Rebuild

Minnkota Power Cooperative, Inc.

June 24, 2013

I, Robert McLennan, President & CEO, a duly authorized agent of Minnkota Power Cooperative, Inc. that has the authority to bind the company in these matters, do hereby certify under oath:

1. That the rebuild of the Center to Mandan 230 kV transmission line will not affect any known exclusion or avoidance areas as defined by the North Dakota Administrative Code 69-06-08-02 (1) and (2).
2. That Minnkota Power Cooperative, Inc. will comply with all applicable conditions and protections in applicable North Dakota siting laws and rules, and commission orders previously issued for any part of the facility.

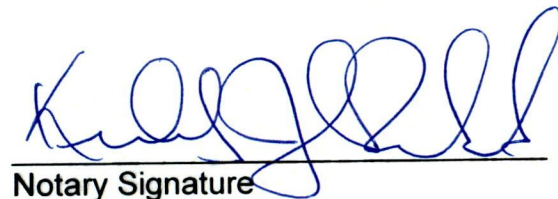
Dated this 26 day of June, 2013.



Robert McLennan
President & CEO

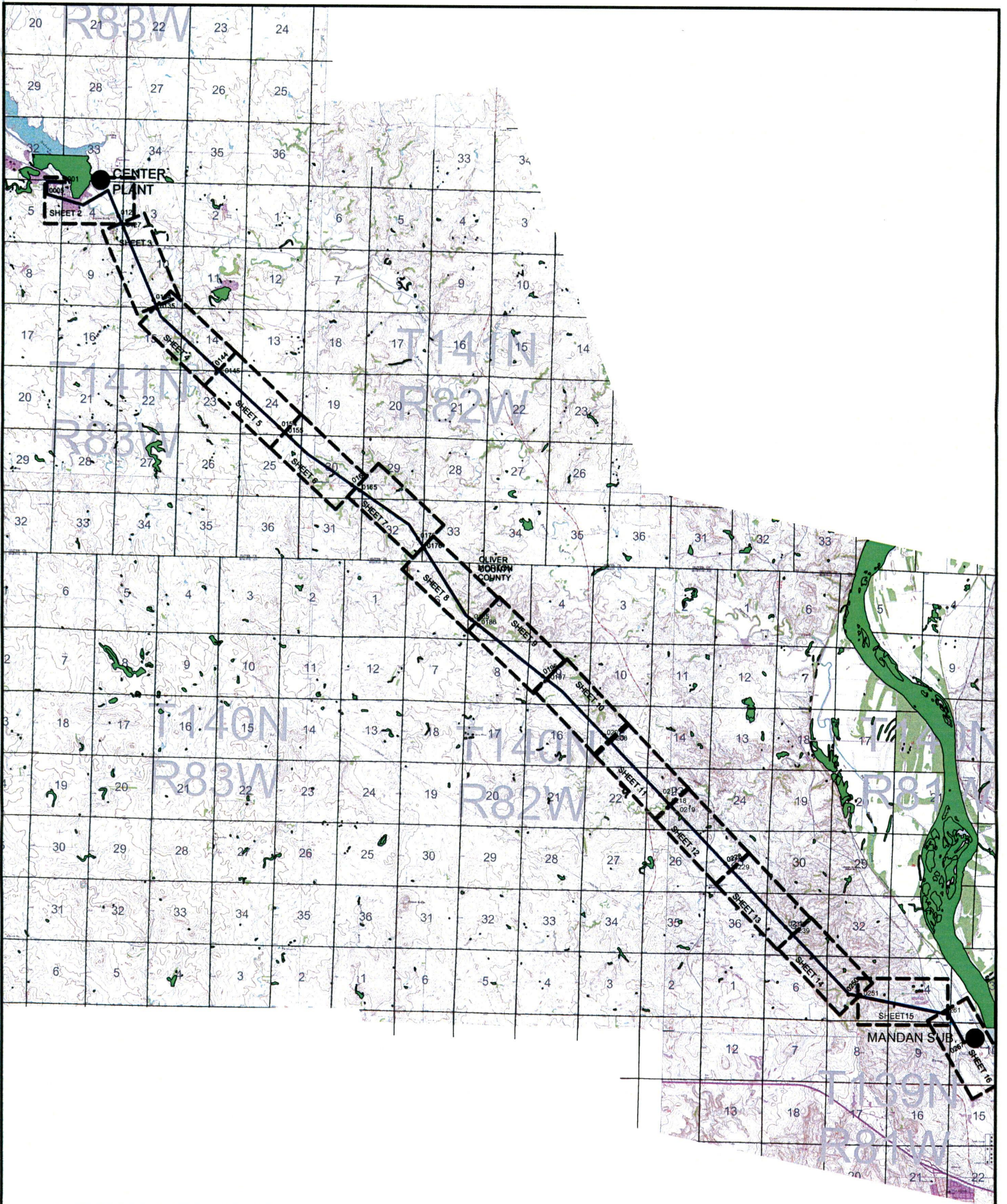
STATE OF NORTH DAKOTA)
) SS.
COUNTY OF GRAND FORKS)

This instrument was acknowledged before me on June 26, 2013, by Robert McLennan, the President & CEO of Minnkota Power Cooperative, Inc., a Minnesota cooperative corporation, on behalf of the cooperative corporation.



Notary Signature

KIMBERLY JOHNSON RUSTAD
E A L Notary Public
State of North Dakota
My Commission Expires Oct. 9, 2018



LEGEND


	MINNKOTA POWER 230 KV LINE
	MINNKOTA POWER RIGHT OF WAY (R.O.W.)
	EXISTING STRUCTURE
	WETLANDS - TYPES VARY



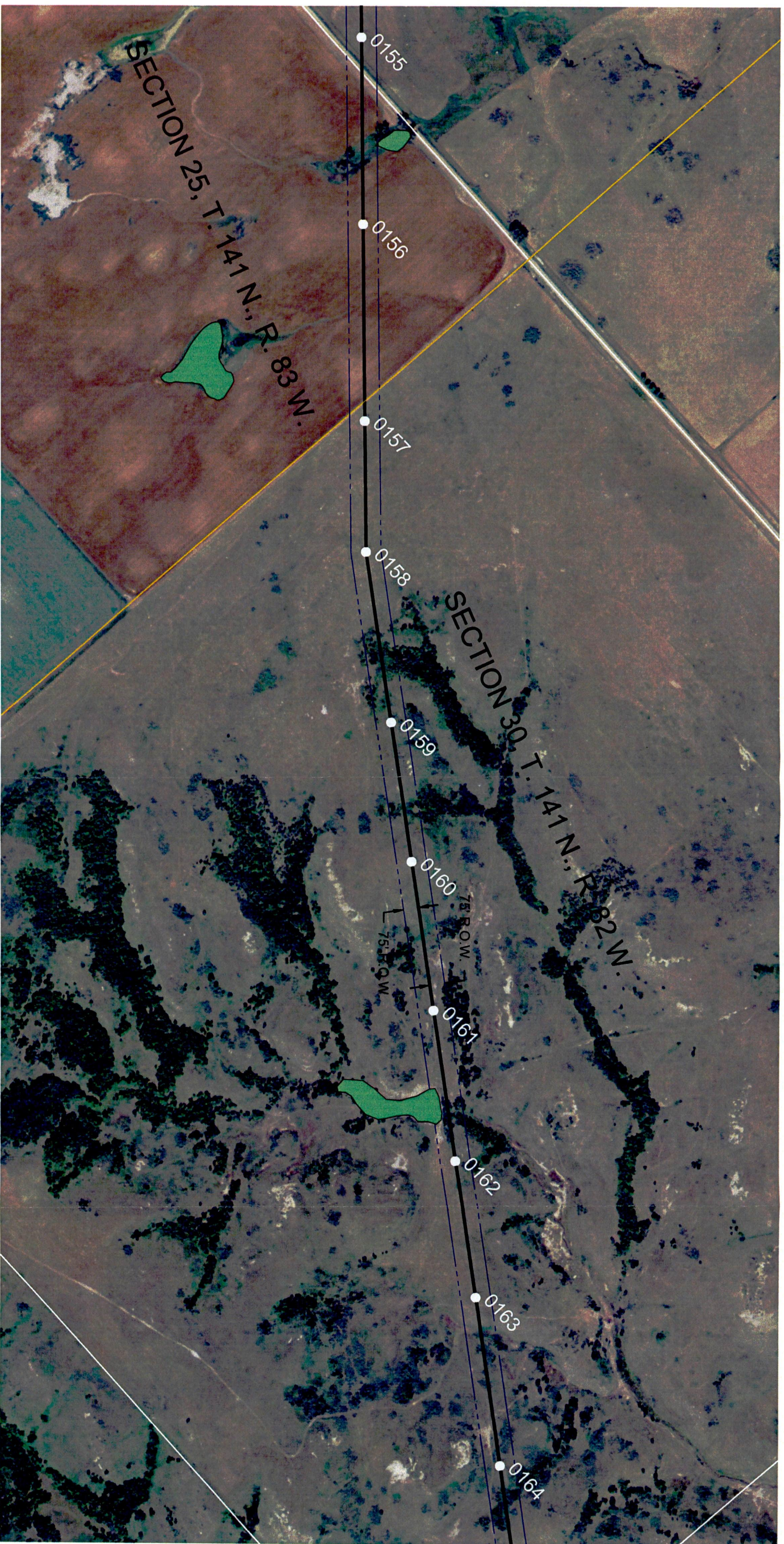
GEOGRAPHIC DATA FROM NORTH DAKOTA STATE GIS DEPARTMENT AND MINNKOTA POWER UPDATED: 03-18-13

					DRAWN B.S.H.	CENTER TO MANDAN 230-KV STRUCTURE MODIFICATIONS OLIVER AND MORTON COUNTIES		
					DATE 06-27-13			
					APPROVED J.T.			
					PROJECT #		SCALE NONE	SHEET 1 OF 16
DATE	PROJECT #	WO #	REVISIONS	BY	WO # 466909		DWG.NO.	



					DRAWN B.S.H.	CENTER TO MANDAN 230 - KV STRUCTURE MODIFICATIONS OLIVER COUNTY, NORTH DAKOTA	
					DATE 06-27-13		
					APPROVED J.T.		
					PROJECT #		
DATE	PROJECT #	WO #	REVISIONS	BY	WO #	 SCALE 1" = 500'	SHEET 3 OF 16
						DWG.NO.	


GEOGRAPHIC DATA FROM NORTH DAKOTA STATE GIS DEPARTMENT AND MINNKOTA POWER UPDATED: 03-18-13



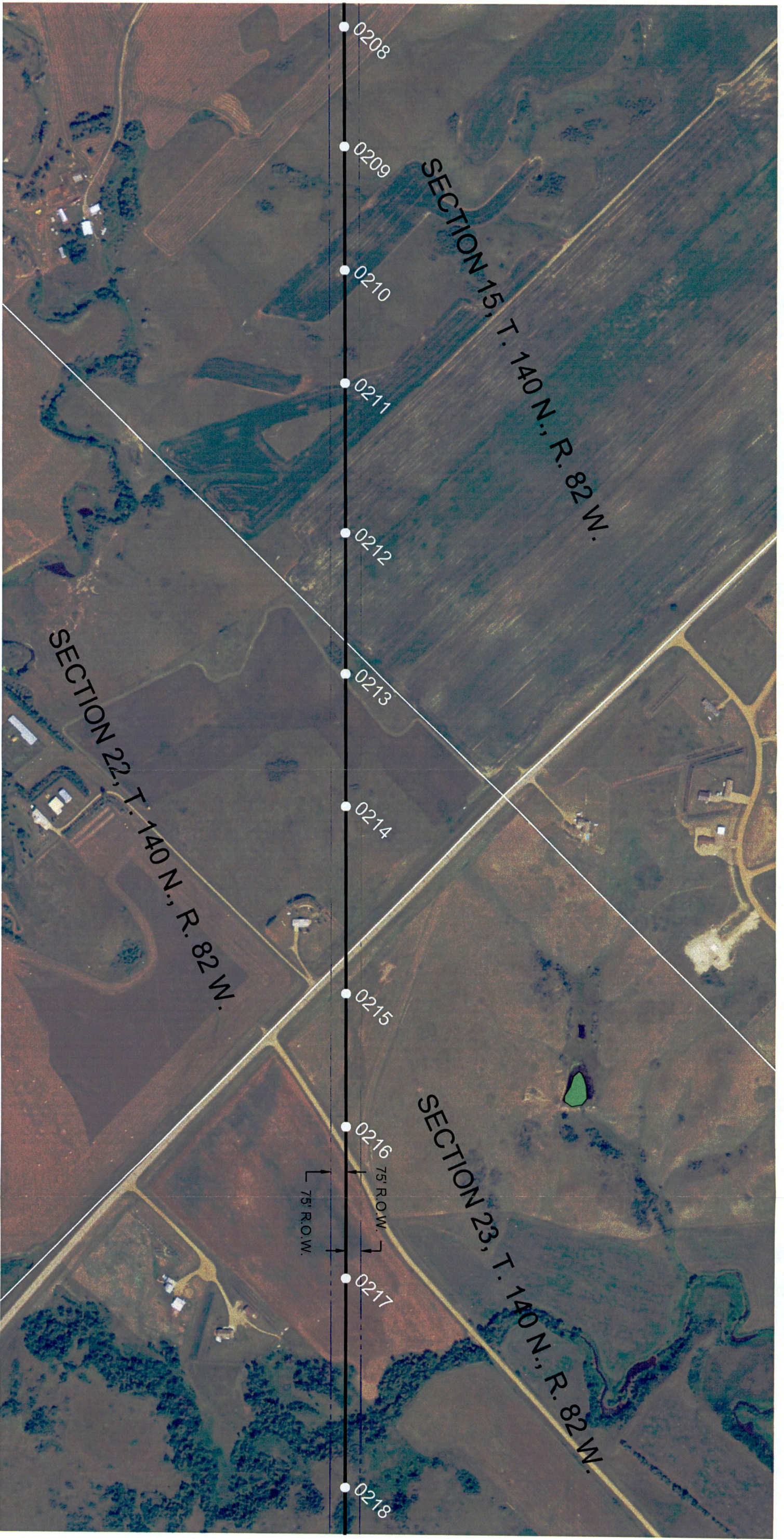
GEOGRAPHIC DATA FROM NORTH DAKOTA STATE GIS DEPARTMENT AND MINNKOTA POWER UPDATED: 03-18-13

DATE	PROJECT #	WO #	REVISIONS	BY	WO #

DRAWN	B.S.H.
DATE	06-27-13
APPROVED	J.T.
PROJECT #	

Center to Mandan 230 - KV STRUCTURE MODIFICATIONS OLIVER COUNTY, NORTH DAKOTA	
	SCALE 1" = 500' SHEET 6 OF 16
DWG. NO.	

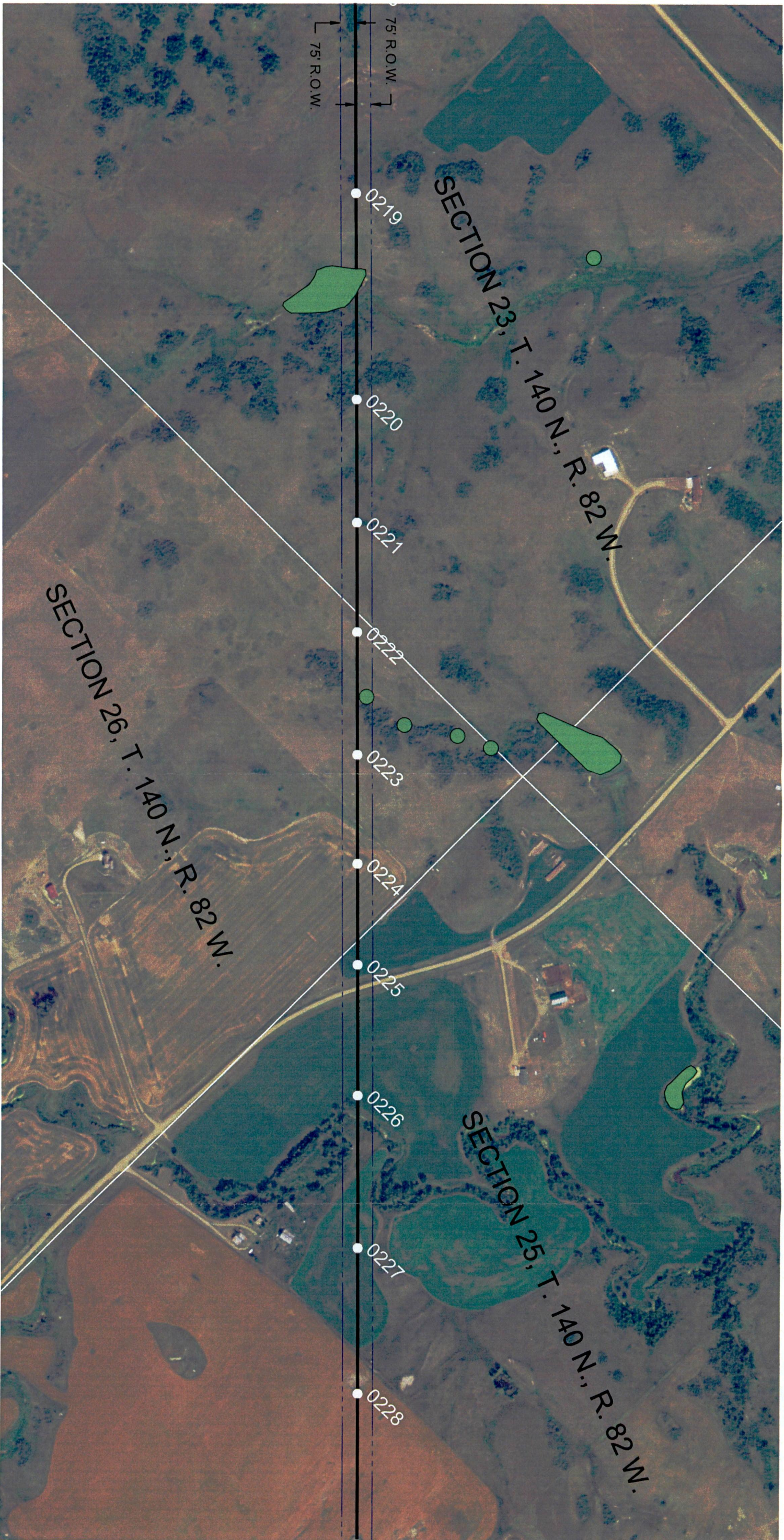




GEOGRAPHIC DATA FROM NORTH DAKOTA STATE GIS DEPARTMENT AND MINNKOTA POWER UPDATED: 03-18-13

DATE	PROJECT #	WO #	REVISIONS	BY	WO #

DRAWN	B.S.H.	Center to Mandan 230 - KV STRUCTURE MODIFICATIONS OLIVER COUNTY, NORTH DAKOTA
DATE	06-27-13	
APPROVED	J.T.	
		PROJECT #
		SCALE 1" = 500'
		DWG. NO.
		SHEET 11 OF 16

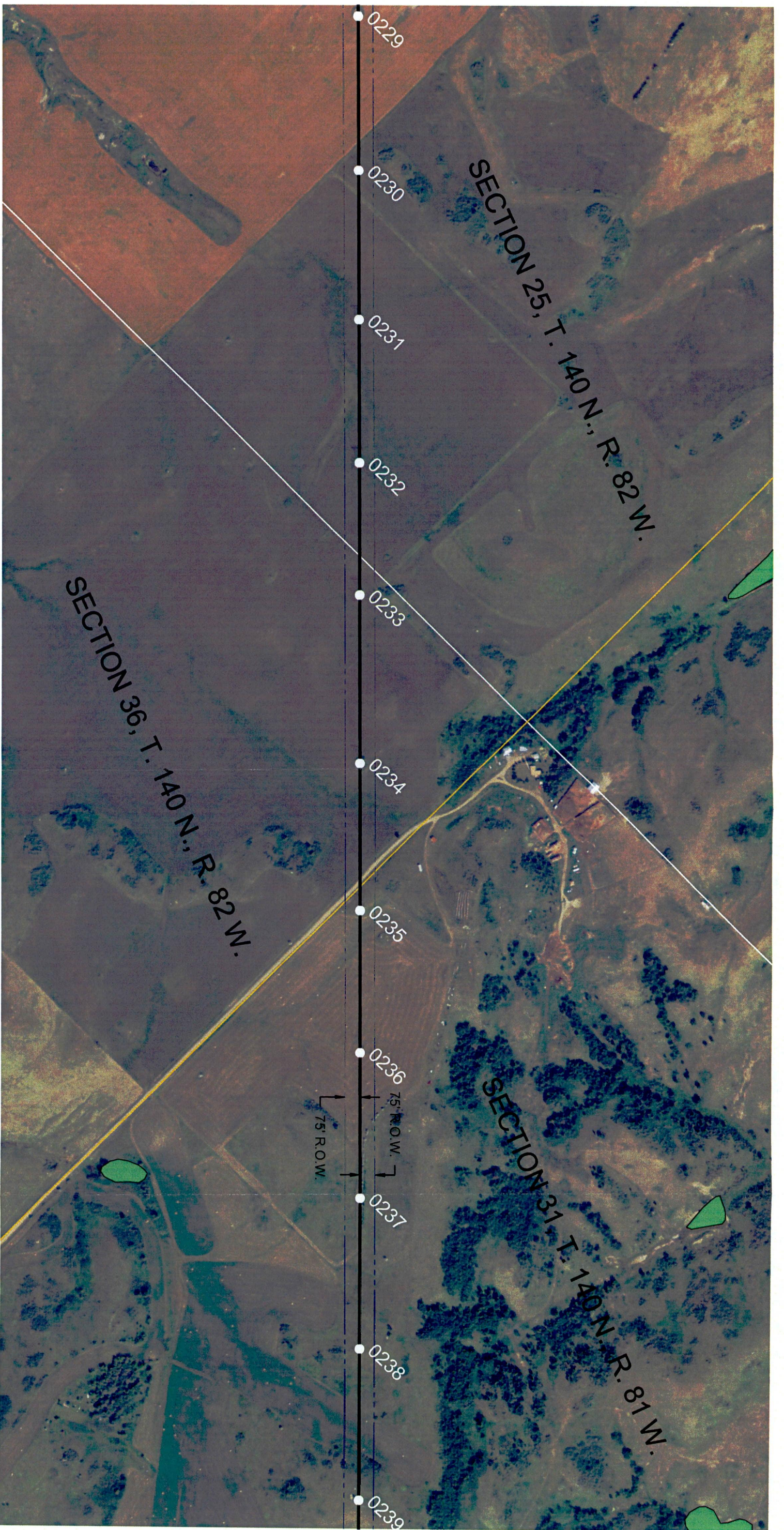


GEOGRAPHIC DATA FROM NORTH DAKOTA STATE GIS DEPARTMENT AND MINNKOTA POWER UPDATED: 03-18-13

DATE	PROJECT #	WO #	REVISIONS	BY	WO #

DRAWN B.S.H.	Minnkota Power COOPERATIVE, INC. <small>Your Partners in Energy</small>	CENTER TO MANDAN 230 - KV STRUCTURE MODIFICATIONS OLIVER COUNTY, NORTH DAKOTA	
DATE 06-27-13			
APPROVED J.T.			
	PROJECT #	SCALE 1" = 500'	SHEET 12 OF 16
		DWG. NO.	

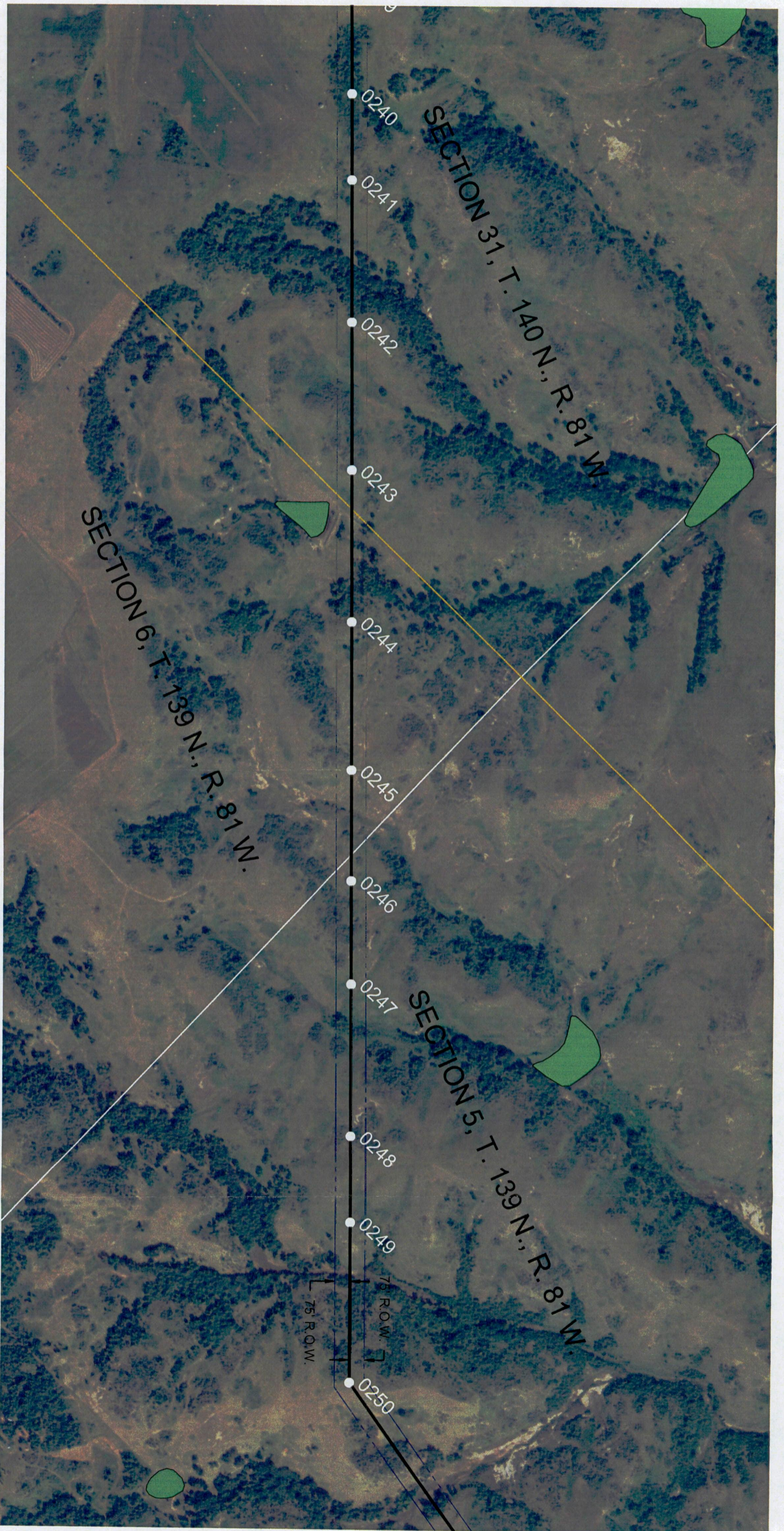




GEOGRAPHIC DATA FROM NORTH DAKOTA STATE GIS DEPARTMENT AND MINNKOTA POWER UPDATED: 03-18-13

DATE	PROJECT #	WO #	REVISIONS	BY	WO #

DRAWN B.S.H.	Minnkota Power COOPERATIVE, INC. <small>Your Traditional Energy Partner</small>	CENTER TO MANDAN 230 - KV STRUCTURE MODIFICATIONS OLIVER COUNTY, NORTH DAKOTA
DATE 06-27-13		
APPROVED J.T.		
	PROJECT #	
	SCALE 1" = 500'	SHEET 13 OF 16
	DWG. NO.	



GEOGRAPHIC DATA FROM NORTH DAKOTA STATE GIS DEPARTMENT AND MINNKOTA POWER UPDATED: 03-18-13

DATE	PROJECT #	WO #	REVISIONS	BY	WO #	DRAWN	DATE	APPROVED
						B.S.H.	06-27-13	J.T.

Minnkota Power <small>COOPERATIVE, INC.</small> <small>New Technology Energy Service</small>		CENTER TO MANDAN 230 - KV STRUCTURE MODIFICATIONS OLIVER COUNTY, NORTH DAKOTA
SCALE 1" = 500'	DWG. NO.	SHEET 14 OF 16



