

March 18, 2014

VIA HAND DELIVERY

Mr. Darrell Nitschke
Executive Secretary
North Dakota Public Service Commission
600 E. Boulevard, Dept. 408
Bismarck, ND 58505-0480



**RE: BAKKEN OIL EXPRESS PIPELINE
CRUDE OIL PIPELINE — DUNN AND
STARK COUNTIES
CASE NUMBER PU-13-825**

Dear Mr. Nitschke:

Enclosed for filing, please find an original and ten (10) copies of the following documents in support of Bakken Oil Express Pipeline, LLC's ("BOE") route amended pursuant to Section 49-22-16.3(3):

1. Certification of John Wadsworth regarding exclusion and avoidance areas;
2. Maps depicting original route and requested reroute; and
3. Map depicting field studies conducted and incorporated into original Siting Application and reports.

Also enclosed is a CD containing the above-referenced documents in PDF format. As shown in the third attached item, field studies were conducted in summer and fall 2013 on a variety of potential routes, to prepare for potential route changes in this area. As noted in the attached documents, the results of these field studies are incorporated into the Siting Application filed with the Commission on October 4, 2013, as well as in the Cultural Report filed with the Commission on October 25, 2013. Finally, please note that the Certification of John Wadsworth is a copy. The original executed documents will be forwarded shortly.

Page 2 of 2
March 18, 2014

If you should have any questions, please advise.

Sincerely,



JILLIAN RUPNOW

Enclosures
45272844_1.DOCX

BEFORE THE PUBLIC SERVICE COMMISSION
OF THE STATE OF NORTH DAKOTA

Bakken Oil Express Pipeline, LLC
Crude Oil Pipeline — Dunn and Stark Counties
Siting Application

CASE NO. PU-13-825

Certification of John Wadsworth

STATE OF KANSAS

COUNTY OF SEDGWICK

John C. Wadsworth states and alleges as follows:

1. That I am the Director of Engineering and Construction of Bakken Oil Express Pipeline, LLC (“BOE”) with the authority to bind BOE to the statements set forth in this Certification.
2. That I submit this Certification in support of BOE’s request for an amended Certificate of Corridor Compatibility and Route Permit, filed in the above-captioned matter.
3. That on October 4, 2013, BOE filed its Combined Certificate of Corridor Compatibility and Route Permit Application with the North Dakota Public Service Commission (“Commission”).
4. That on December 9, 2013, a public hearing was held in this matter.
5. That on December 19, 2013, BOE filed with the Commission a request to approve a minor modification of the route and corridor proposed at the December 9, 2013 public hearing.
6. That BOE has already commenced construction on its pipeline.
7. That a landowner, L&W Land, LLLP, (Lester and Warren Schneider) 11050 17th Street SW, Manning, ND 58642, owning land found within the E/2E/2E/2NE/4 of Section 35, T143N, R96W requested a change in the location of the pipeline in two locations, as depicted in

the maps enclosed herewith.

8. That no governmental entity owns an interest within the adjustment area.

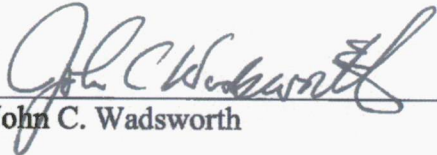
9. That field studies encompassing the adjustment area were previously completed, and that the results of those studies were included in BOE's Application for Certificate of Corridor Compatibility and Route Permit in the above-captioned matter.

10. That the requested route and corridor changes will not affect any exclusion or avoidance areas, that BOE has conducted field studies to confirm the same, and that the results of those studies have been previously filed with the Commission.

11. That the requested reroutes that are outside the previously approved corridor are less than one and one-half miles long.

12. That BOE will comply with the Commission's order, laws, and rules designating the corridor and route.

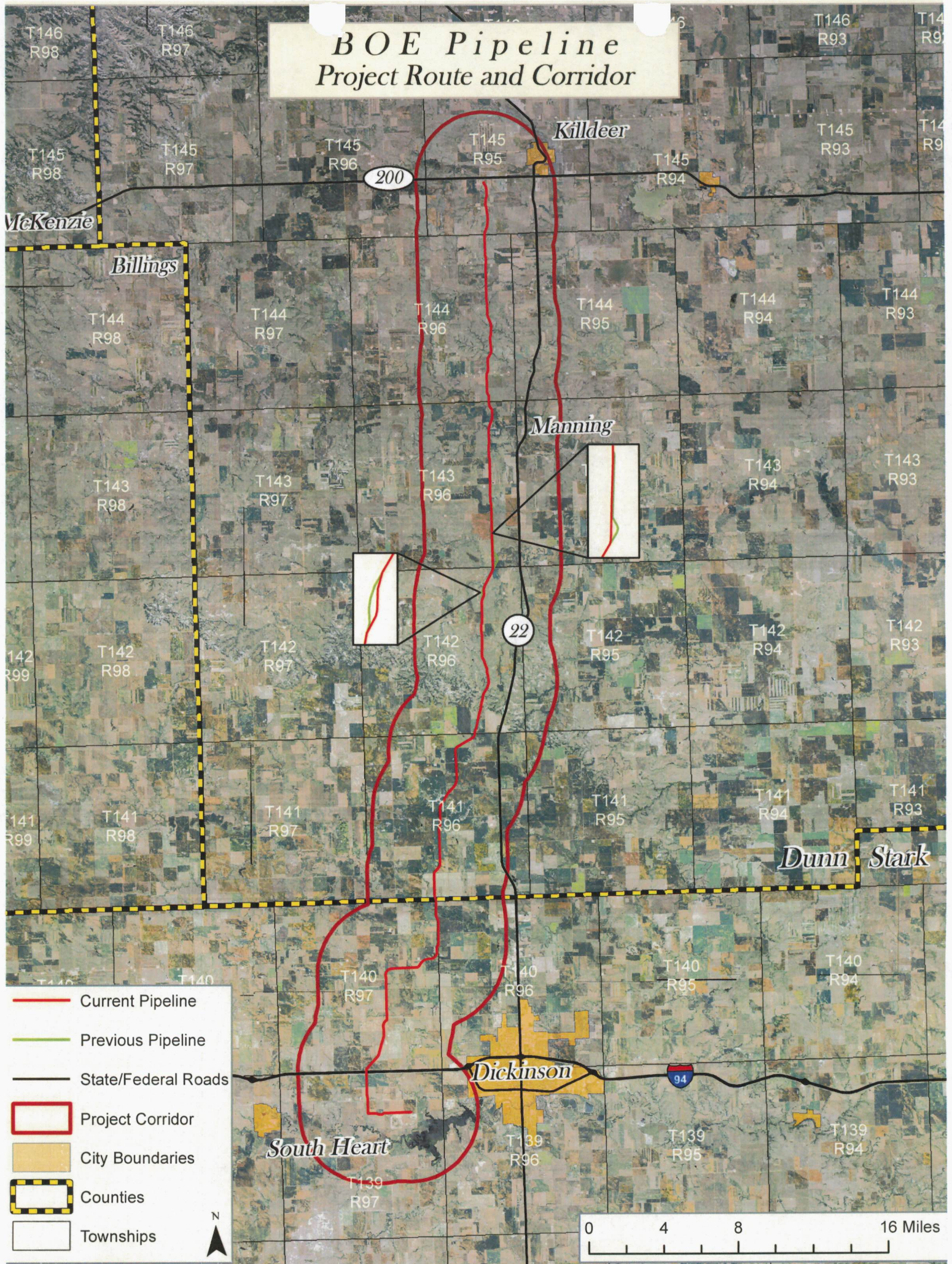
BAKKEN OIL EXPRESS PIPELINE, LLC



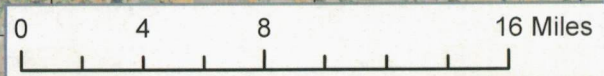
John C. Wadsworth

45272379_2.docx

BOE Pipeline Project Route and Corridor



- Current Pipeline
- Previous Pipeline
- State/Federal Roads
- ▭ Project Corridor
- ▭ City Boundaries
- ▭ Counties
- ▭ Townships



BOE Pipeline Project Route

22
T143 R96

23
T143 R96

24
T143 R96

27
T143 R96

26
T143 R96

25
T143 R96

34
T143 R96

35
T143 R96


36
T143 R96

3
T142 R96

2
T142 R96

1
T142 R96

BOE Pipeline Pipeline Project

-  Previous Route
-  Current Route
-  Pipeline
-  Block Valve Sets



Counties



BOE Pipeline Project Route

3
T142 R96

2
T142 R96

1
T142 R96

10
T142 R96

11
T142 R96

12
T142 R96

15
T142 R96

14
T142 R96

13
T142 R96





22
T142 R96

23
T142 R96

24

22

BOE Pipeline Pipeline Project

-  Previous Route
-  Current Route
-  Pipeline
-  Block Valve Sets
-  Counties

Sheet 6 of 13



