

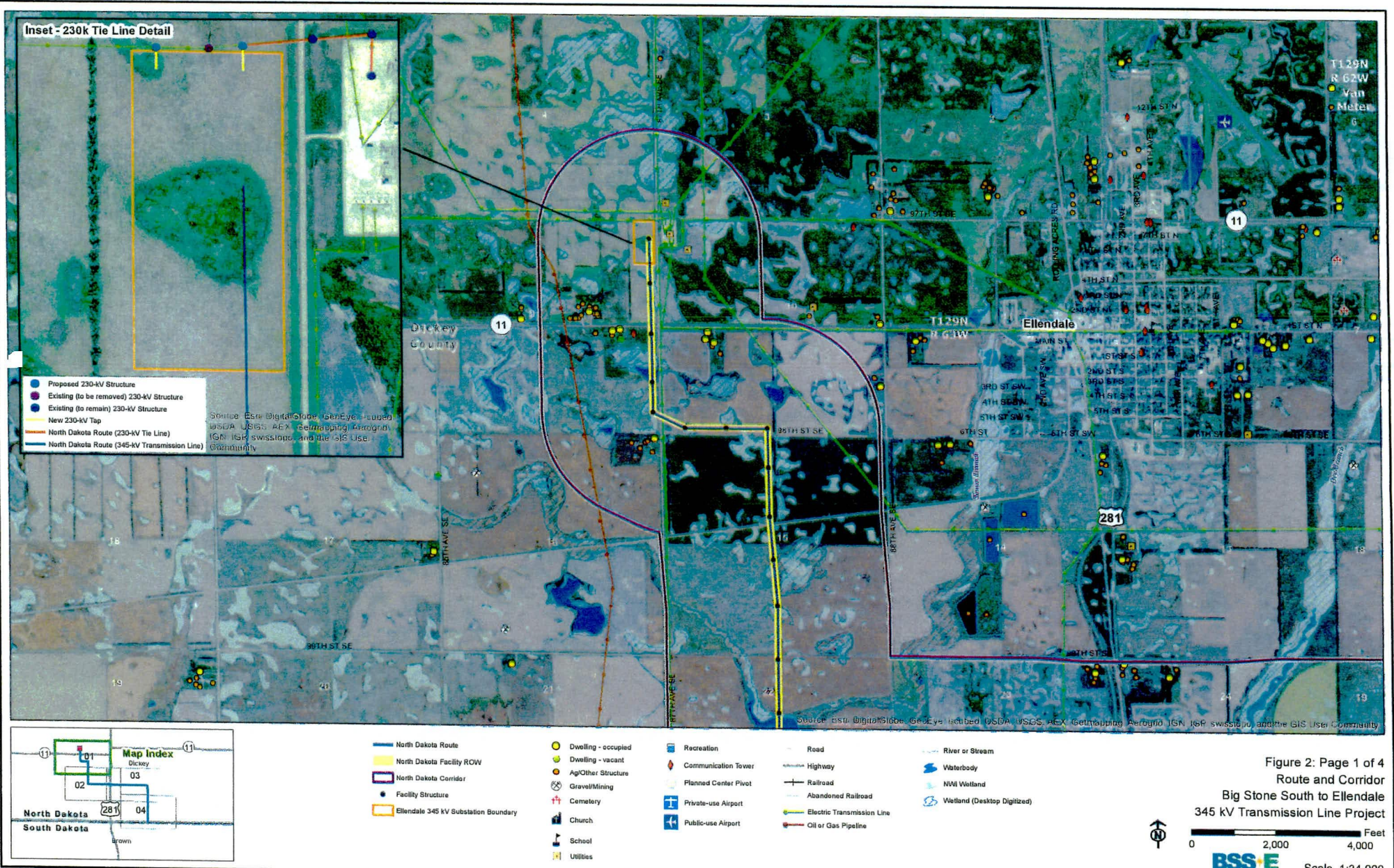
- North Dakota Facility
- South Dakota Facility
- Project End Point
- + Private-use Airport
- + Public-use Airport
- Electric Transmission Line
- Oil or Gas Pipeline
- Scenic Byway
- Highway
- Railroad
- Abandoned Railroad
- City
- County Boundary
- State Boundary

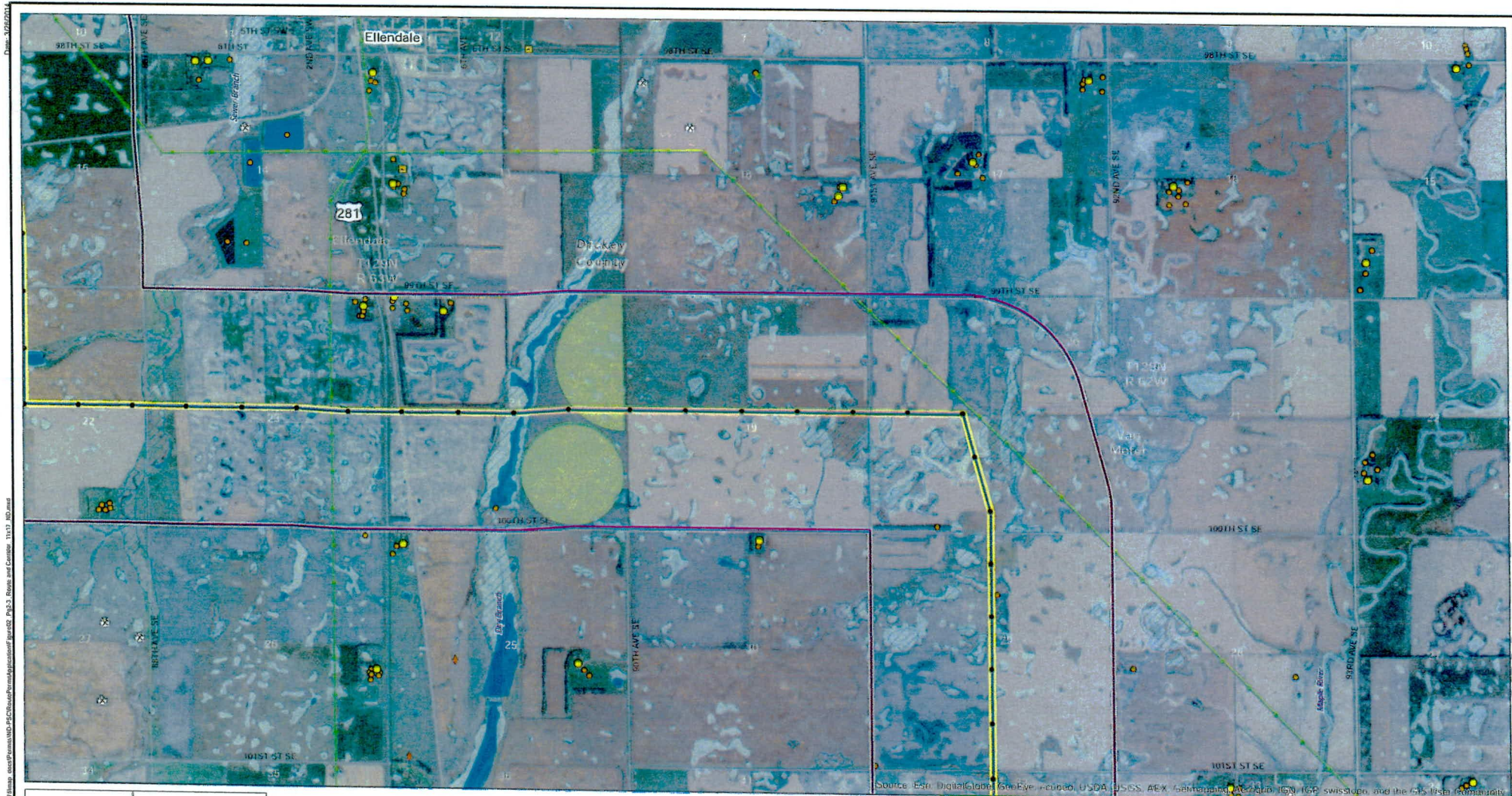
Figure 1
Project Overview
Big Stone South to Ellendale
345 kV Transmission Line Project



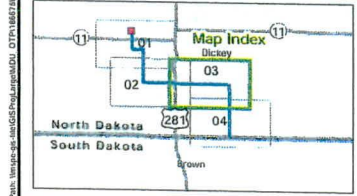
EXHIBIT
3

Path: \\mapscg\gis\GIS\Projects\BigStone\MapDocs\OTD\1807\Transmittal\MapDocs\GIS\Map\MapIndex\MapIndex.mxd
 Date: 11/17/2017 10:56:51 AM
 Source: Esri, DigitalGlobe, GeoEye, Earthstar (USA), USGS, AeroGRID, IGN, SRS, Switzerland, and the GIS User Community





Source: Esri, DigitalGlobe, GeoEye, AeroGRID, USDA, USGS, AeroGRID, IGN, IGP, swisstopo, and the GIS User Community



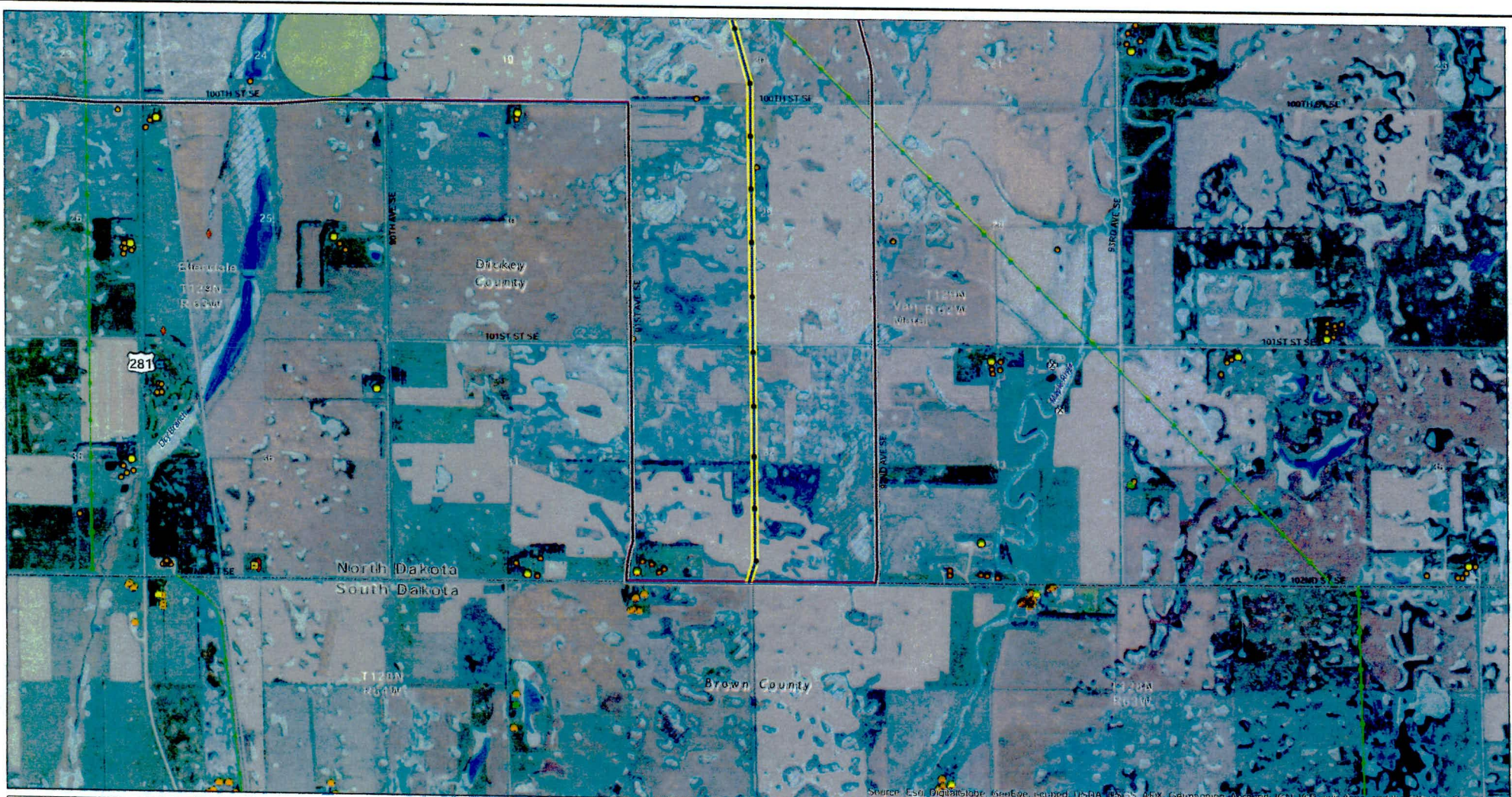
- | | | | | |
|--------------------------------------|---------------------|----------------------|----------------------------|-----------------------------|
| North Dakota Route | Dwelling - occupied | Recreation | Road | River or Stream |
| North Dakota Facility ROW | Dwelling - vacant | Communication Tower | Highway | Waterbody |
| North Dakota Corridor | Ag/Other Structure | Planned Center Pivot | Railroad | NWI Wetland |
| Facility Structure | Cemetery | Private-use Airport | Abandoned Railroad | Wetland (Desktop Digitized) |
| Ellendale 345 kV Substation Boundary | Church | Public-use Airport | Electric Transmission Line | |
| | School | | Oil or Gas Pipeline | |
| | Utilities | | | |

Figure 2: Page 3 of 4
Route and Corridor
Big Stone South to Ellendale
345 kV Transmission Line Project

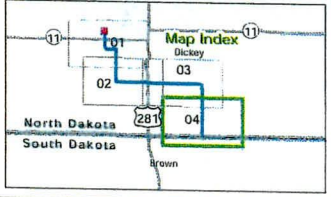
0 2,000 4,000 Feet

BSS E
Big Stone South to Ellendale

Scale 1:24,000



Source: Esri, DigitalGlobe, GeoEye, AeroGRID, USDA, FAO, Swire, GEBCO, DeLorme, NAVTEQ, Garmin, Swisstopo, and the GIS User Community



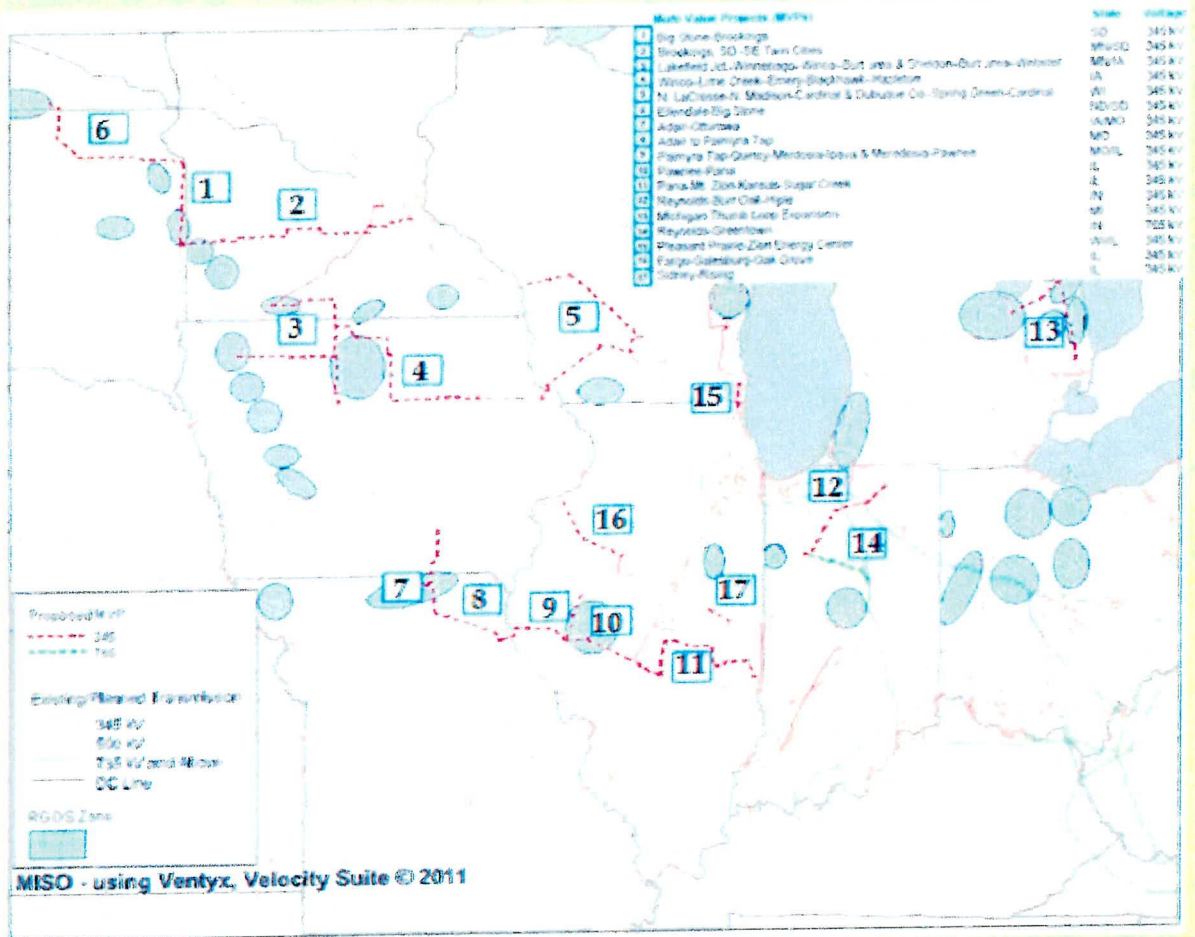
- | | | | | |
|--------------------------------------|---------------------|----------------------|----------------------------|-----------------------------|
| North Dakota Route | Dwelling - occupied | Recreation | Road | River or Stream |
| North Dakota Facility ROW | Dwelling - vacant | Communication Tower | Highway | Waterbody |
| North Dakota Corridor | Ag/Other Structure | Planned Center Pivot | Railroad | NWI Wetland |
| Facility Structure | Gravel/Mining | Private-use Airport | Abandoned Railroad | Wetland (Desktop Digitized) |
| Ellendale 345 kV Substation Boundary | Cemetery | Public-use Airport | Electric Transmission Line | |
| | Church | | Oil or Gas Pipeline | |
| | School | | | |
| | Utilities | | | |

Figure 2: Page 4 of 4
Route and Corridor
Big Stone South to Ellendale
345 kV Transmission Line Project

0 2,000 4,000 Feet

BSS E
Big Stone South to Ellendale

Scale 1:24,000



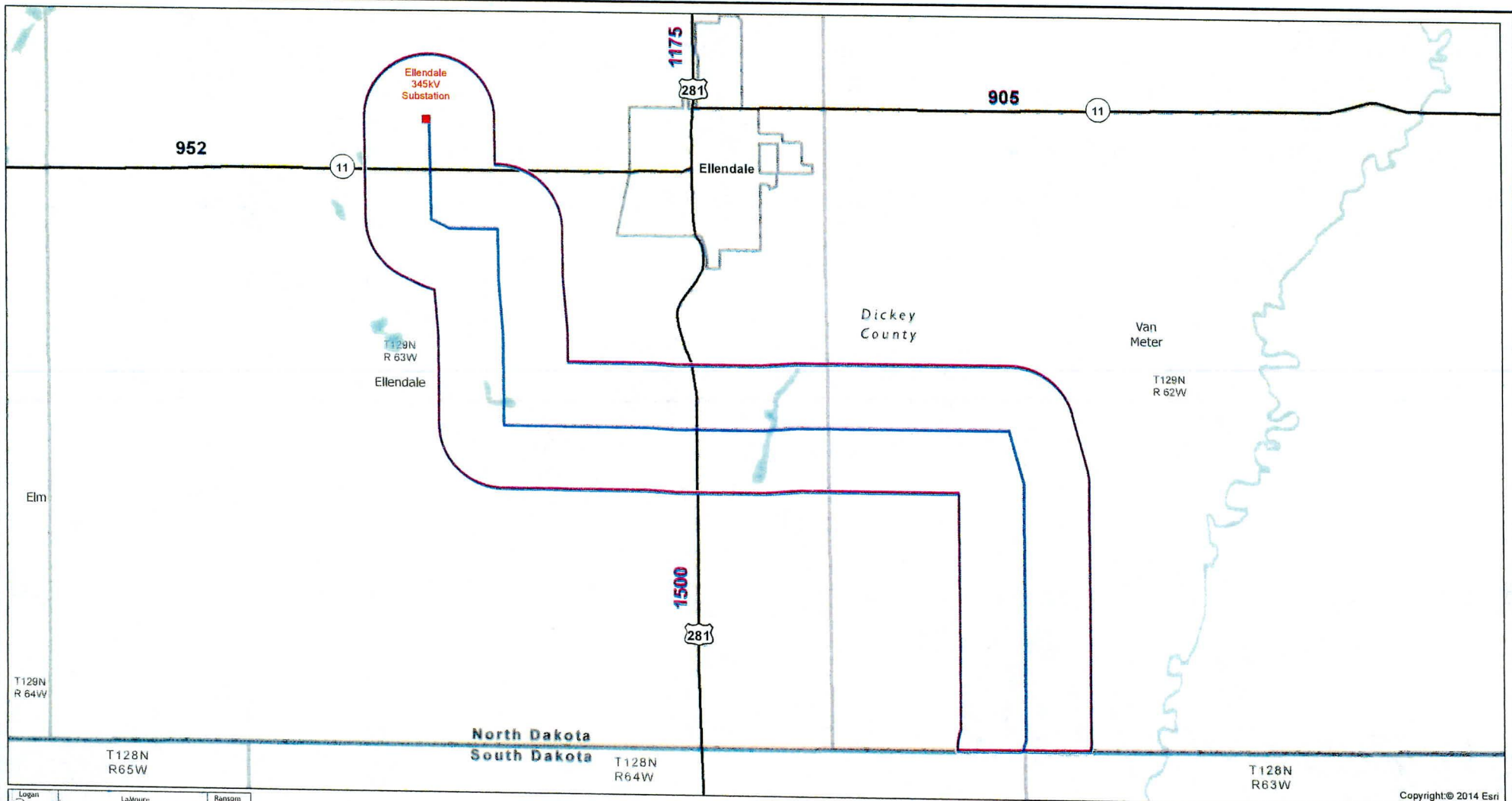
Project Number	Project Name	States
1.	Big Stone – Brookings	SD
2.	Brookings, SD-SE Twin Cities	MN/SD
3.	Lakefield Jct.-Winnebago – Winco – Burt Area and Sheldon – Burt Area – Webster	MN/IA
4.	Winco – Lime Creek – Emery-Blackhawk – Hazleton	IA
5.	N. LaCrosse – N. Madison – Cardinal and Dubuque Co. – Spring Green – Cardinal	WI
6.	Ellendale – Big Stone	ND/SD
7.	Adair – Ottumwa	IA/MO
8.	West Adair to Palmyra Tap	MO
9.	Palmyra-Quincy-Merdosia – Ipava and Merdosia – Pawnee	MO/IL
10.	New Pawnee – Pana	IL
11.	Pana-Mt Zion – Kansas – Sugar Creek	IL
12.	New Reynolds – Burr Oak – Hiple	IN
13.	Michigan Thumb Loop Expansion	MI
14.	New Reynolds – Greentown	IN
15.	Pleasant Prairie – Zion Energy Center	WI/IL
16.	Fargo – Oak Grove	IL
17.	Sidney-Rising	IL

Figure 4
 MISO MVP Project Map
 Big Stone South to Ellendale
 345 kV Transmission Line Project

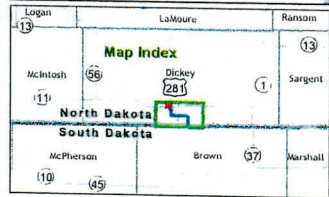


Date: 3/26/2014

Path: \\nas014\GIS\Projects\GIS\OTD\Map\2014\Map\2014_03_26\Map\2014_03_26_11111_10.dwg



Copyright © 2014 Esri



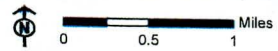
Data Source: NDDOT 2012

- North Dakota Route
- North Dakota Corridor
- Project End Point
- Highway

AAADT (Average Annual Daily Traffic) - 1175

THE TRAFFIC FIGURES ARE THE TOTAL AT THE CLOSEST HIGHWAY INTERSECTION OR TOWN

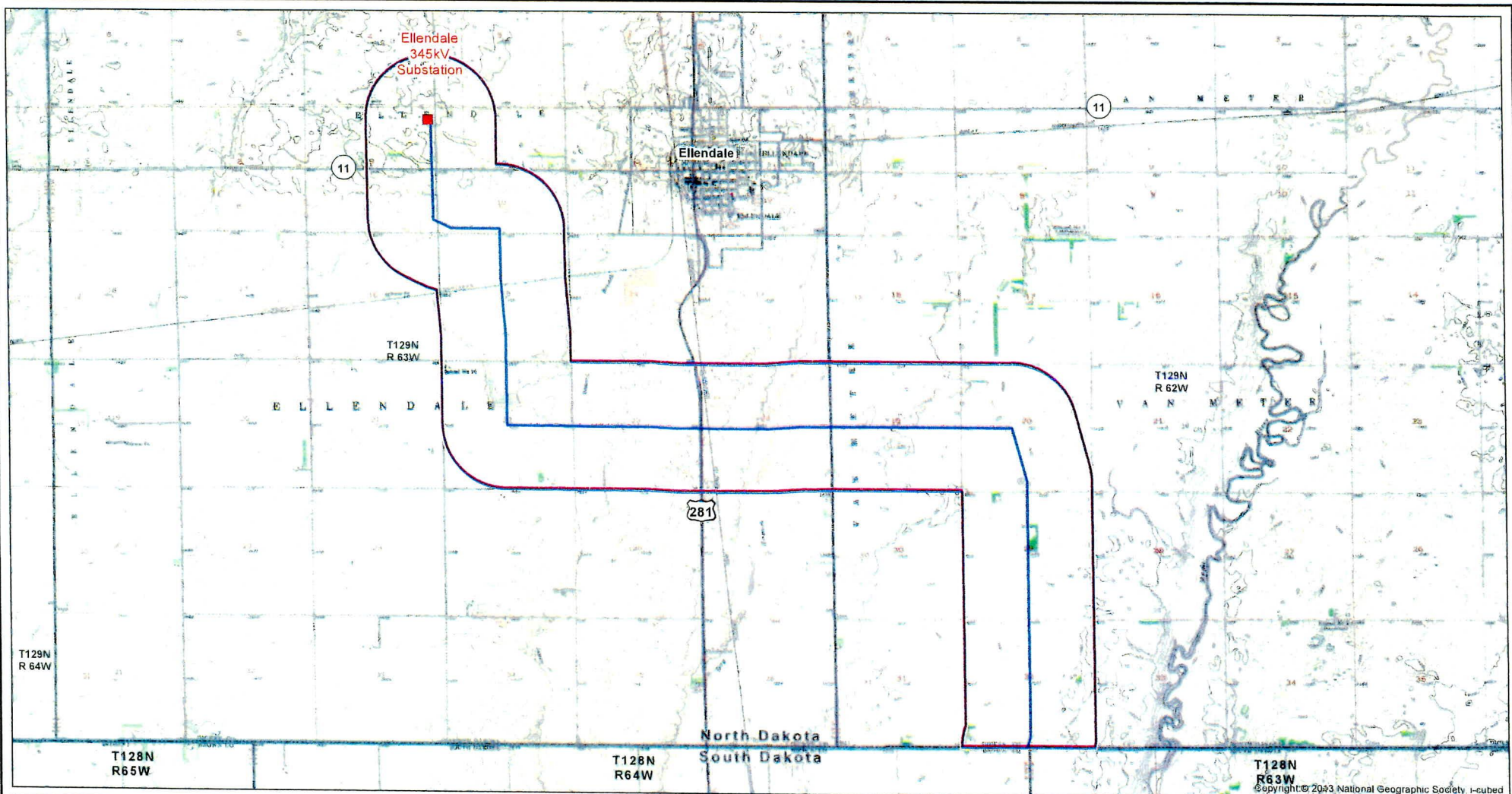
Figure 5
 Average Annual Daily Traffic
 Big Stone South to Ellendale
 345 kV Transmission Line Project



BSS-E
 Big Stone South to Ellendale
 Scale 1:45,000

Date: 3/26/2014

Path: \\msse-01s1\GIS\Profile\area\NDU_CTP\118675\map_area\Permits\ND_PSC\Router\Permit\application\Figure06_Topography_Map_11x17_ND.mxd



Data Source : USGS, National Geographic Society.

- Project End Point
- North Dakota Route
- North Dakota Corridor

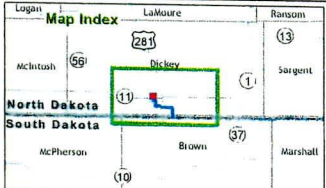
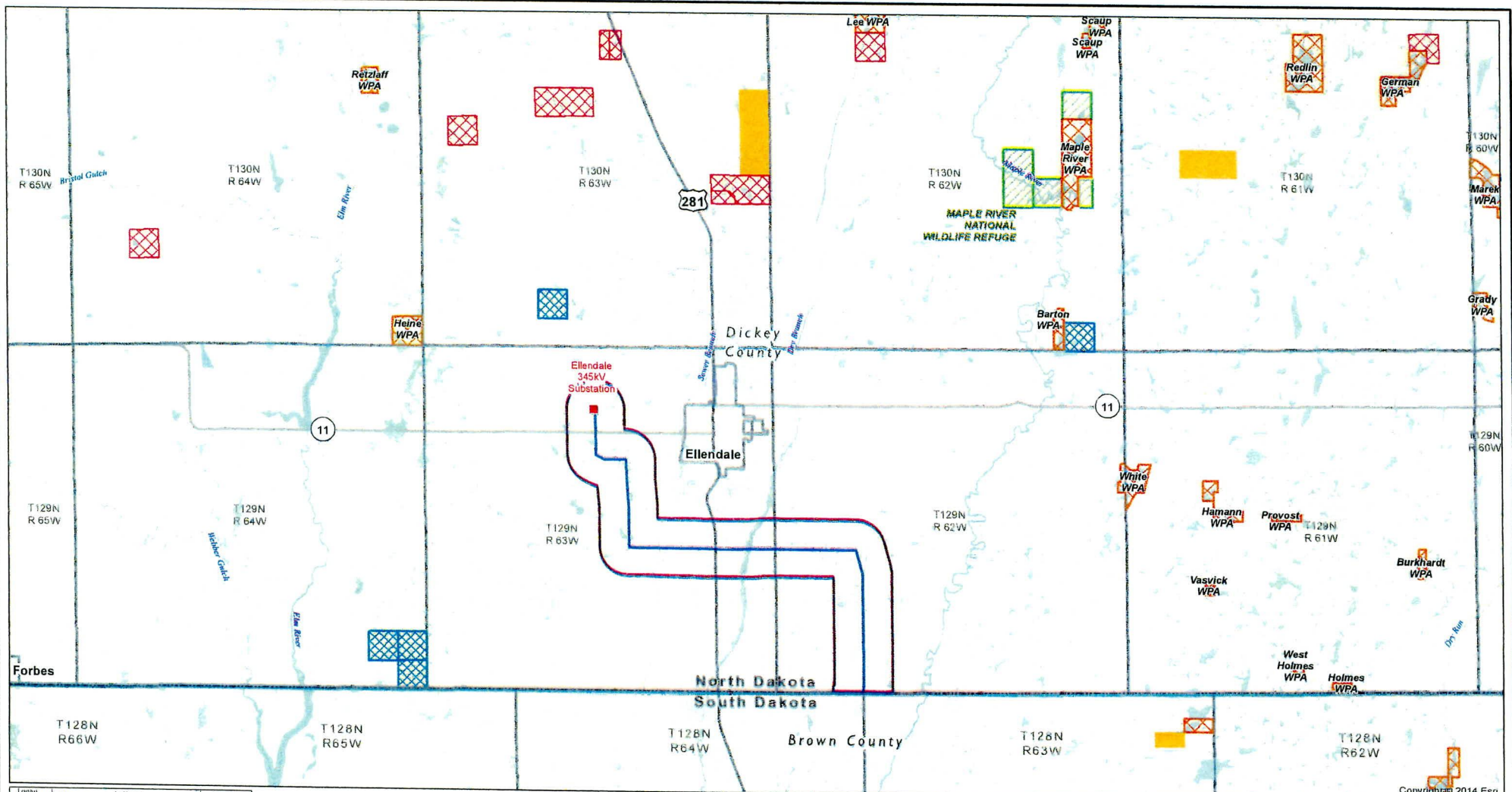
Figure 6
Topography (USGS Map)
Big Stone South to Ellendale
345 kV Transmission Line Project

0 0.5 1 Miles

BSS-E
Big Stone South to Ellendale

Scale 1:45,000

Path: \\mspc-ase-dia\GIS\Profile\area\WDU_OT\PI\1867\5map_docs\Permit\ND-FSC\Route\PermitApplication\Four07_ManagedResourceLands_Maps_11X17_ND.mxd
 Date: 1/26/2014



- North Dakota Route
- North Dakota Corridor
- Project End Point
- PLOT Lands
- Waterfowl Production Area
- State Trust Lands
- State Lands (WMA/Parks)
- National Wildlife Refuge (NWR)

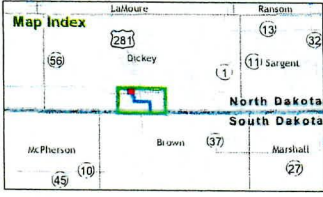
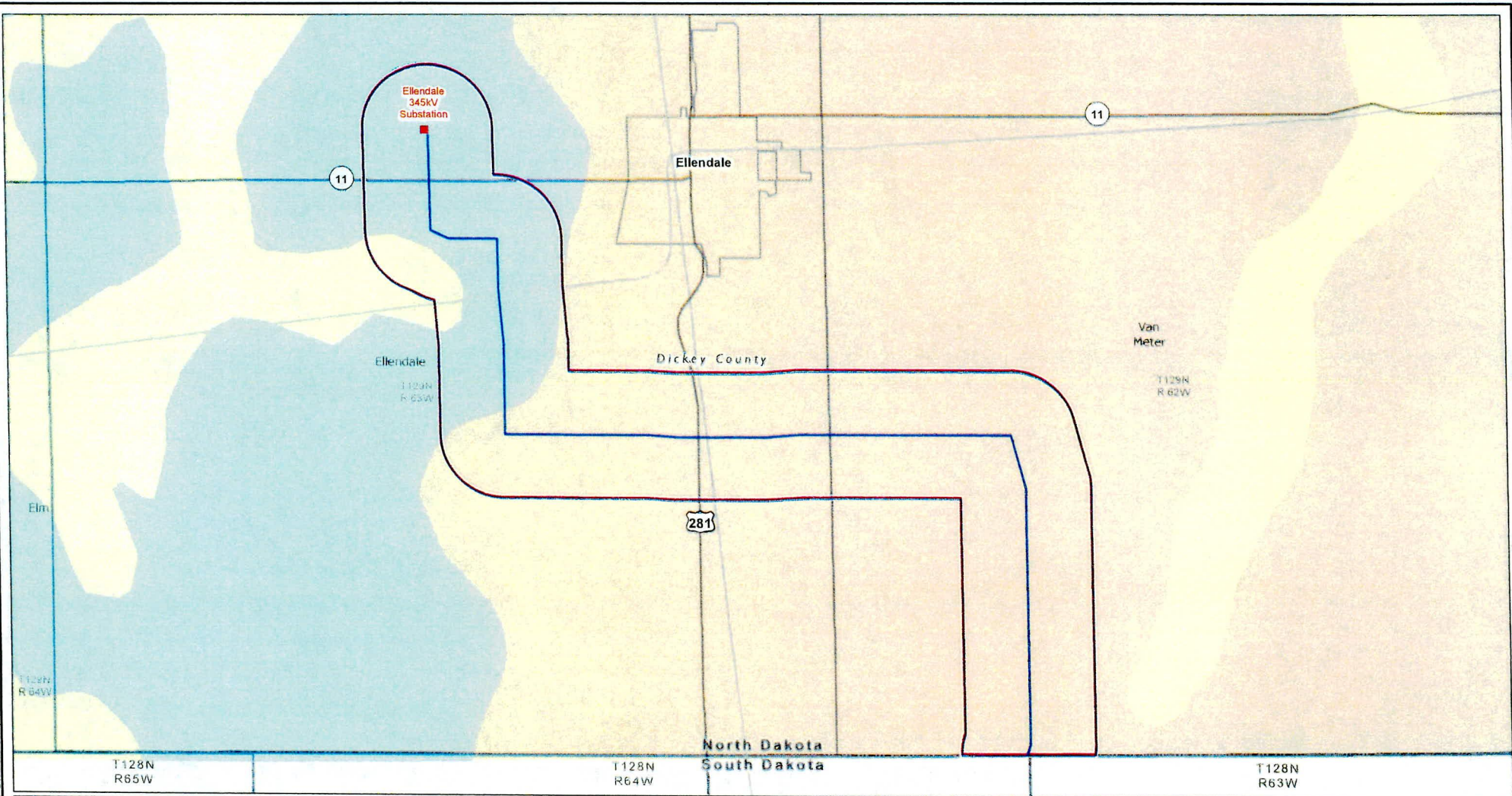
Data Source : NDGF, USFWS, NDSLD.

Figure 7
 Managed Resource Lands
 Big Stone South to Ellendale
 345 kV Transmission Line Project

Copyright © 2014 Esri

Miles
0 1 2

Scale 1:100,000

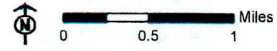


Data Source: USDA, NRCS.

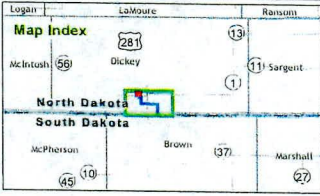
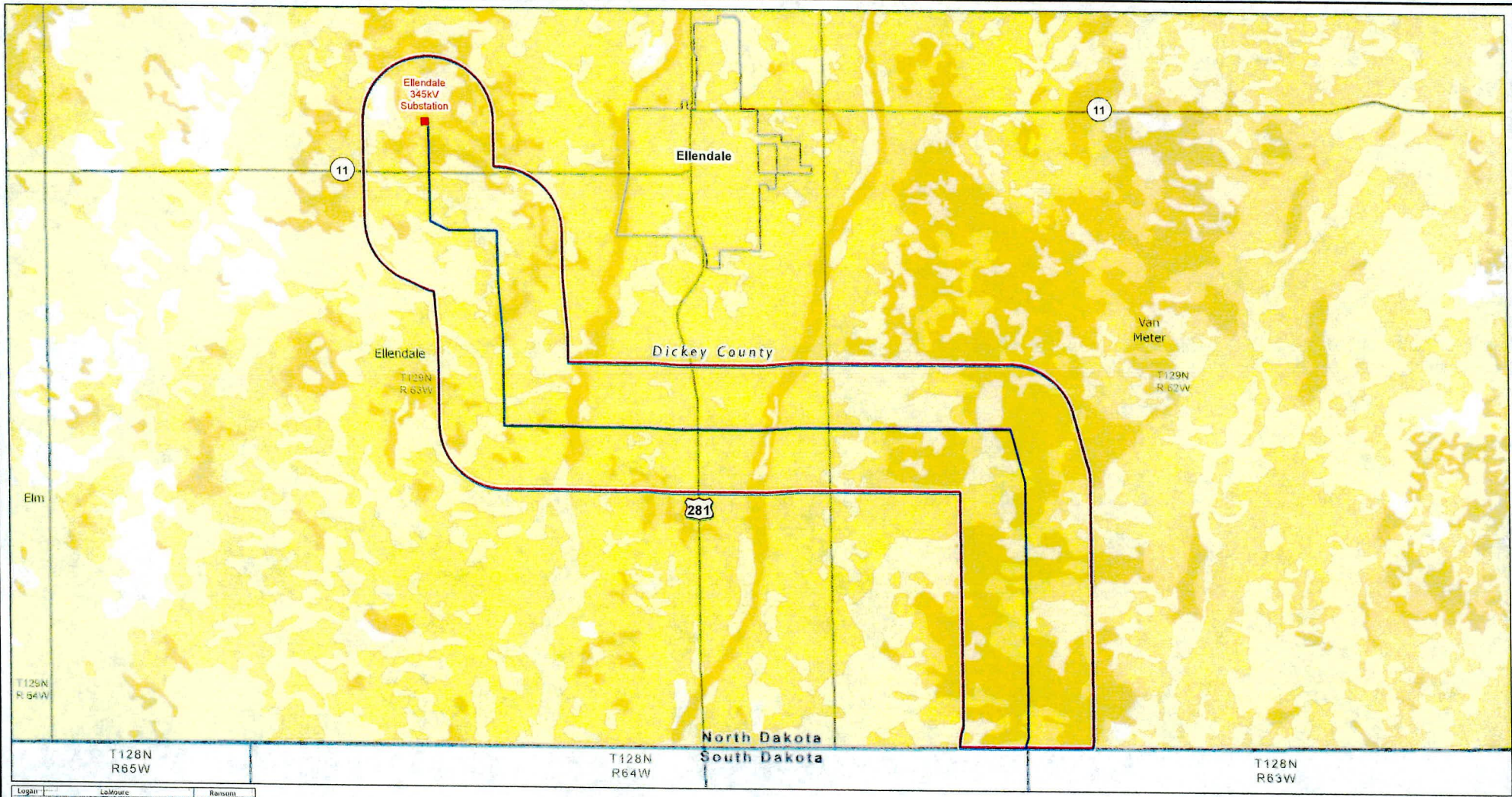
- North Dakota Route
- North Dakota Corridor
- Project End Point
- Railroad
- Abandoned Railroad
- Highway

- STATSGO Soil Association**
- BARNES-SVEA-TONKA (ND045)
 - CAVOUR-SVEA-BARNES (ND052)
 - LA PRAIRIE-FAIRDALE-GARDENA (ND066)
 - SWENODA-BARNES-TIFFANY (ND014)

Figure 8
 State Soils Association (STATSGO)
 Big Stone South to Ellendale
 345 kV Transmission Line Project



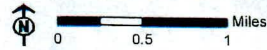
BSS-E
 Big Stone South to Ellendale
 Scale 1:45,000



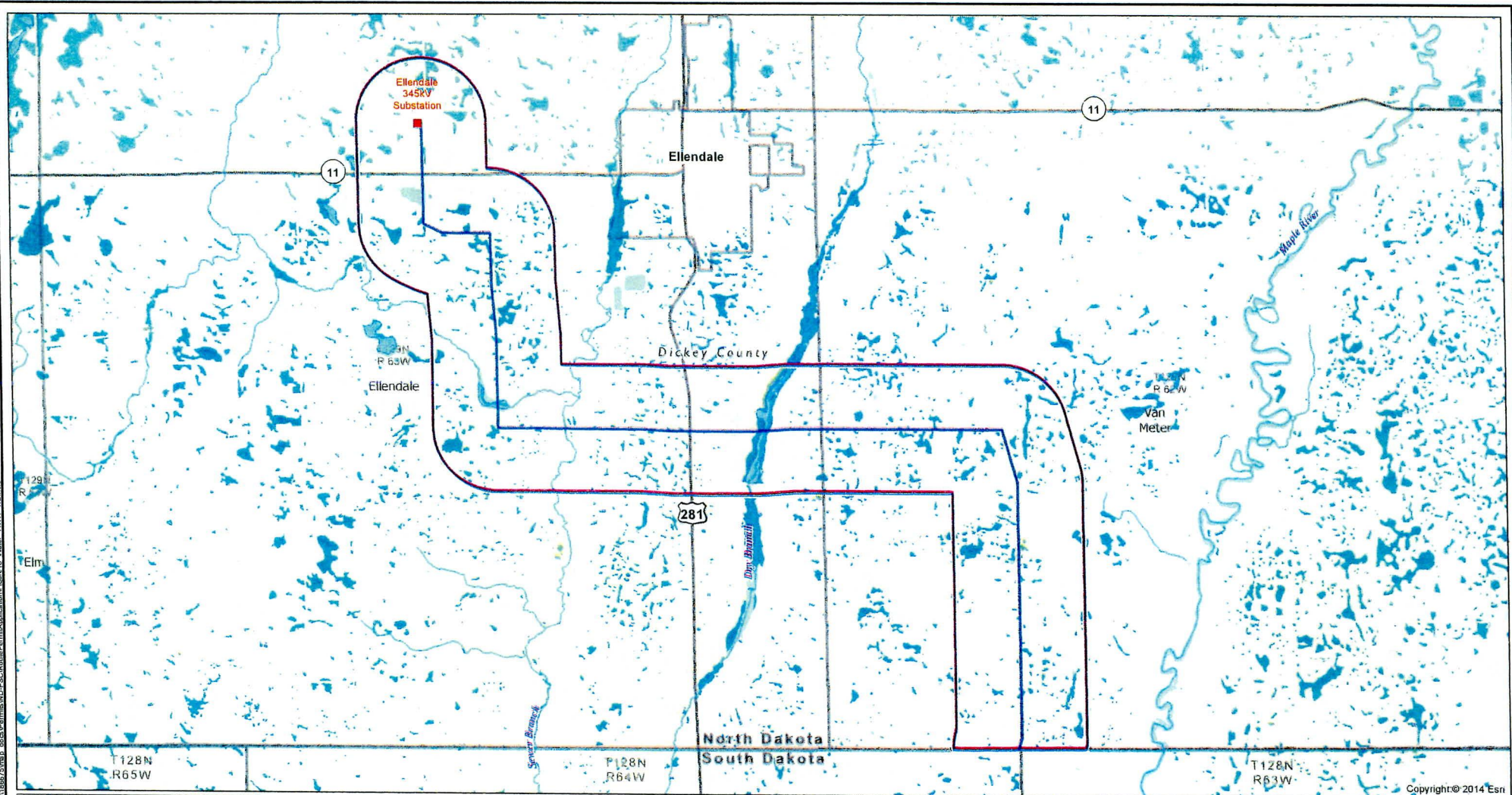
Data Source: USDA, NRCS.

- North Dakota Route
- North Dakota Corridor
- Project End Point
- SSURGO Prime Farmland**
- All areas are prime farmland
- Prime farmland if drained
- Not prime farmland
- No Data

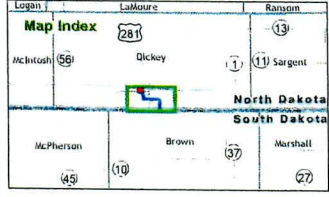
Figure 9
 Prime Farmland and Soil Distribution (SSURGO)
 Big Stone South to Ellendale
 345 kV Transmission Line Project



Scale 1:45,000



Copyright © 2014 Esri



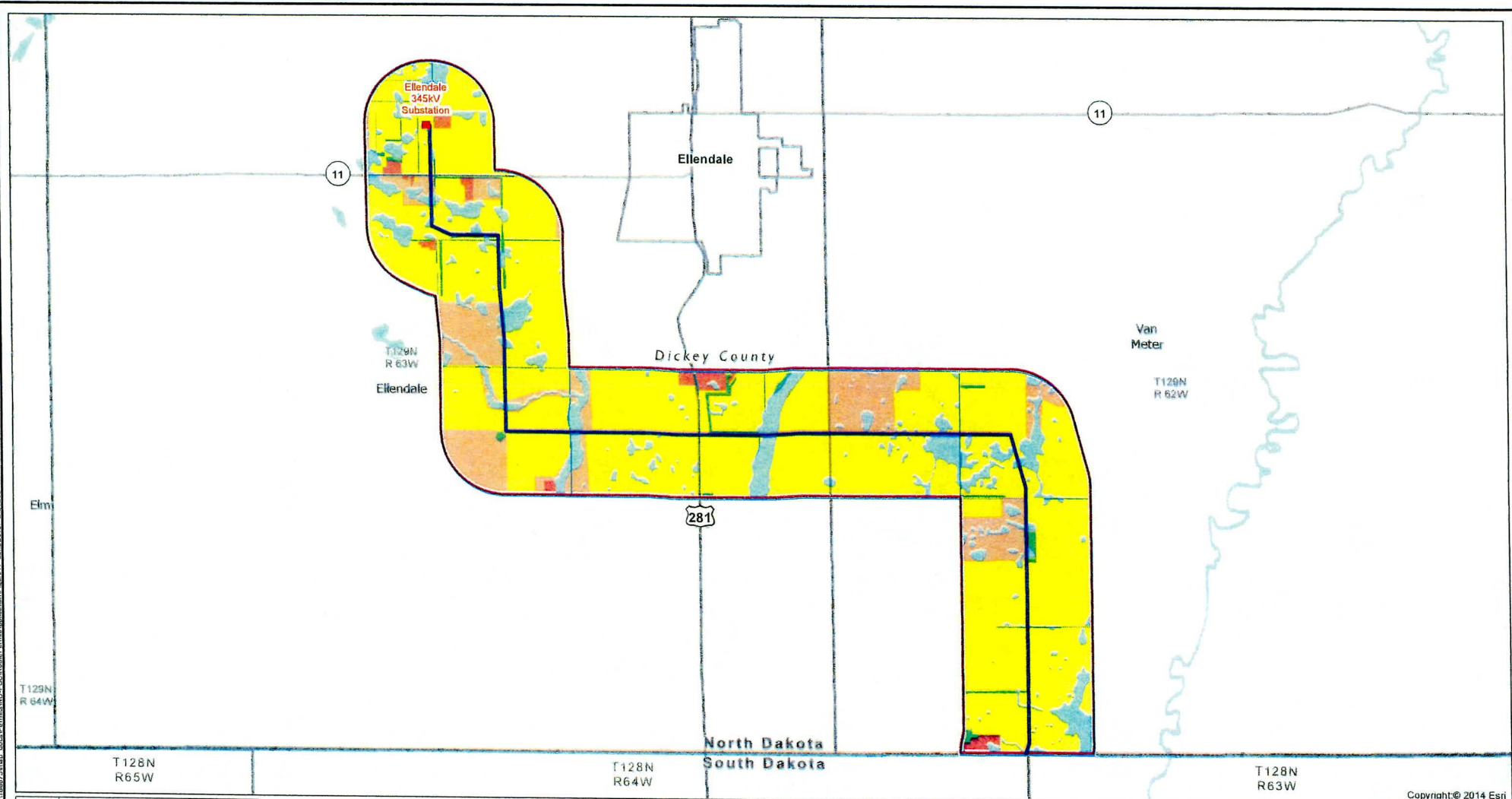
Data Source: USGS, NDSWC, USFWS.

- North Dakota Route
- North Dakota Corridor
- Project End Point
- NWI Wetlands**
 - Freshwater Pond; Lake; Riverine
 - Freshwater Emergent Wetland
 - Freshwater Forested/Shrub Wetland
- Streams**
 - Waterbodies

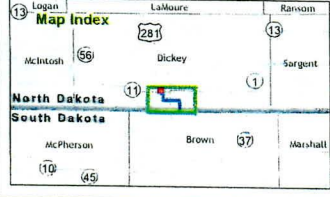
Figure 10
Surface Waters and Wetlands
Big Stone South to Ellendale
345 KV Transmission Line Project

Miles
0 0.5 1

BSS E
Big Stone South to Ellendale
Scale 1:45,000



Copyright © 2014 Esri



Data Source: HDR, Land Cover digitized based on World Imagery 2010 and Field Surveys.

- North Dakota Route
 - North Dakota Corridor
 - Project End Point
-
- Land Cover**
 - Cultivated
 - Developed Open Space (Road)
 - Developed (Buildings, farmsteads, substations)
 - Pasture/Hay
 - Trees
 - Wetland (Desktop Digitized)

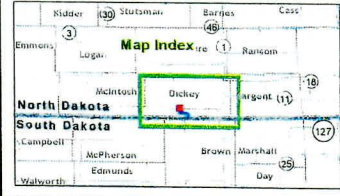
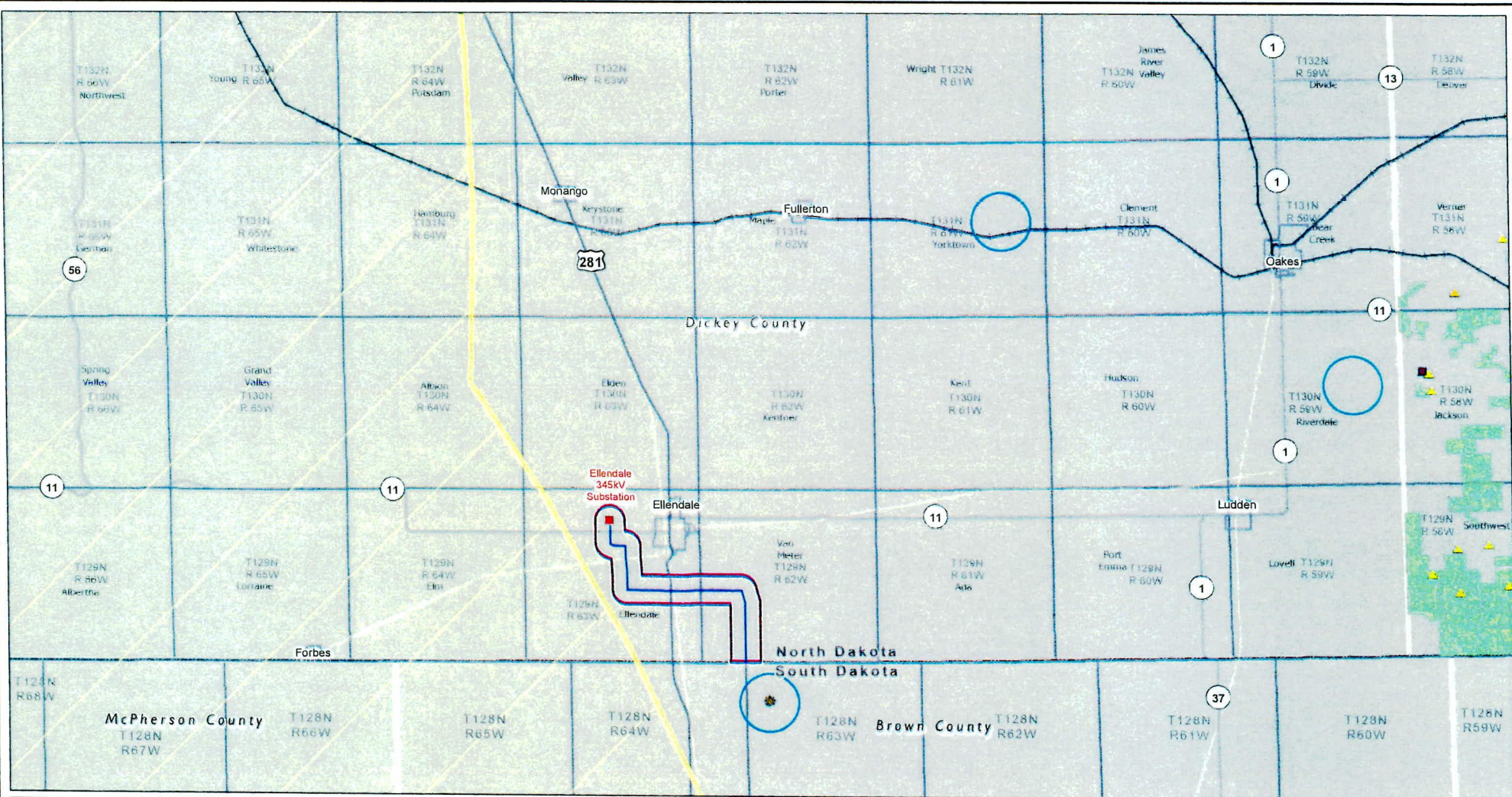
Figure11
Land Cover
Big Stone South to Ellendale
345 kV Transmission Line Project

0 0.5 1 Miles

BSS-E
Big Stone South to Ellendale

Scale 1:45,000

Date: 3/26/2014 Path: \\mapscs\gis\proj\area\MDLU_01\F1188673\map_docs\Parma\ND_PSC\Revue\Publications\Figure 12_SensitiveResources_11X17_A01.mxd



Data Source: NDPRD, NDGF.

Sensitive information has been redacted from this figure.

- North Dakota Route
- North Dakota Corridor
- Project End Point
- * Eagle Nest-field verified
- Eagle Location (1 mile buffer)
- 95% Whooping Crane Migration Corridor
- ▲ Endangered Species (State)
- ▲ Threatened Species (State)
- Federal candidate species (Federal)
- Federally threatened species (Federal)
- Impaired or Vulnerable Terrestrial Community
- +— Railroad
- +— Abandoned Railroad
- Highway

Figure 12
Sensitive Natural Resources
Big Stone South to Ellendale
345 kV Transmission Line Project

0 2 4 Miles

BSS E
Big Stone South to Ellendale

Scale 1:200,000