



May 3, 2019

Steve Kahl  
Director of Administration/Executive Secretary  
North Dakota Public Service Commission  
600 East Boulevard, Dept. 408  
Bismarck, ND 58505-0480

**RE: Montana-Dakota Utilities Co. / Otter Tail Power Company 345KV Transmission Line  
- Dickey County Siting Application  
Case No. PU-13-840**

**As-Built Project Documents for the Certificate of Corridor Compatibility and Route Permit**

Dear Mr. Kahl:

Otter Tail Power Company (Otter Tail) and Montana-Dakota Utilities Co. (MDU) (Applicants) hereby submits the following documents in support of the July 10, 2014 Order, and the Supplemental Orders dated December 16, 2015 and November 29, 2017, granting Certificate of Corridor Compatibility No. 154 and Route Permit No. 166 (together with the Findings of Fact, Conclusion of Law, and Order, hereinafter referred to as the Order) by the North Dakota Public Service Commission (Commission):

Enclosed herewith for filing in connection with the above-referenced matter are copies of the Order Provision requirements: #32 - Paper and electronic version of As-Built Project Documentation. The GIS file geodatabase includes the North Dakota Corridor, structure locations, Ellendale 345kV Substation boundary, and the right-of-way for the North Dakota segment of the Big Stone South to Ellendale Project and this electronic data is referenced to the US Survey feet (NAD 83) UTM 14N feet. Attachment 1 (in paper and on the CD in electronic PDF format) is the plan and profile sheets, Attachment 2 on the CD in electric format is the GIS file geodatabase and can only be read using GIS software.

Three changes from the original project diagrams occurred due to required road setbacks:

1. Structure 1 - The dead-end structure south of the Ellendale 345kV Substation moved approximately west 38 feet and north 77 feet, for a diagonal northwest move of 85 feet from the previous location. Structure 1 is still in the route corridor.
2. Structure 2 moved approximately 20 feet west from its original location. Structure 2 is still in the route corridor.

3. The southern boundary of the Ellendale 345kV Substation fence varies from about 16 feet to 35 feet outside of the North Dakota Corridor, but all of the land is owned by MDU. The entire substation boundary was moved to comply with road setbacks.

The three changes are shown on Attachment 3.

A CD containing a copy of the above referenced Attachment 1 and 2 is enclosed.

An original and 7 copies of this filing are being sent via USPS. An electronic copy of this filing without Attachment 2 was filed electronically with the North Dakota Public Service Commission at [ndpsc@nd.gov](mailto:ndpsc@nd.gov). If you have any questions regarding this filing, please contact me at 218-739-8607 or [pbeithon@otpc.com](mailto:pbeithon@otpc.com).

Sincerely,

*/s/ PETE BEITHON*

Pete Beithon  
Manager, Regulatory Recovery  
Otter Tail Power Company

kaw  
Enclosures  
By electronic filing and U.S. mail

Cc: Dickey County Auditor's Office  
c/o Bev Kuska  
209 North 2<sup>nd</sup> Street  
Ellendale, ND 58436

Cc (without attachments)  
Ulteig Engineers, Inc.  
c/o Robert Youness

# BIG STONE SOUTH - ELLENDALE 345 KV TRANSMISSION LINE

## ELLENDALE SUB - STR 042 (NORTH DAKOTA)

20190301  
 ISSUED FOR  
 RECORD



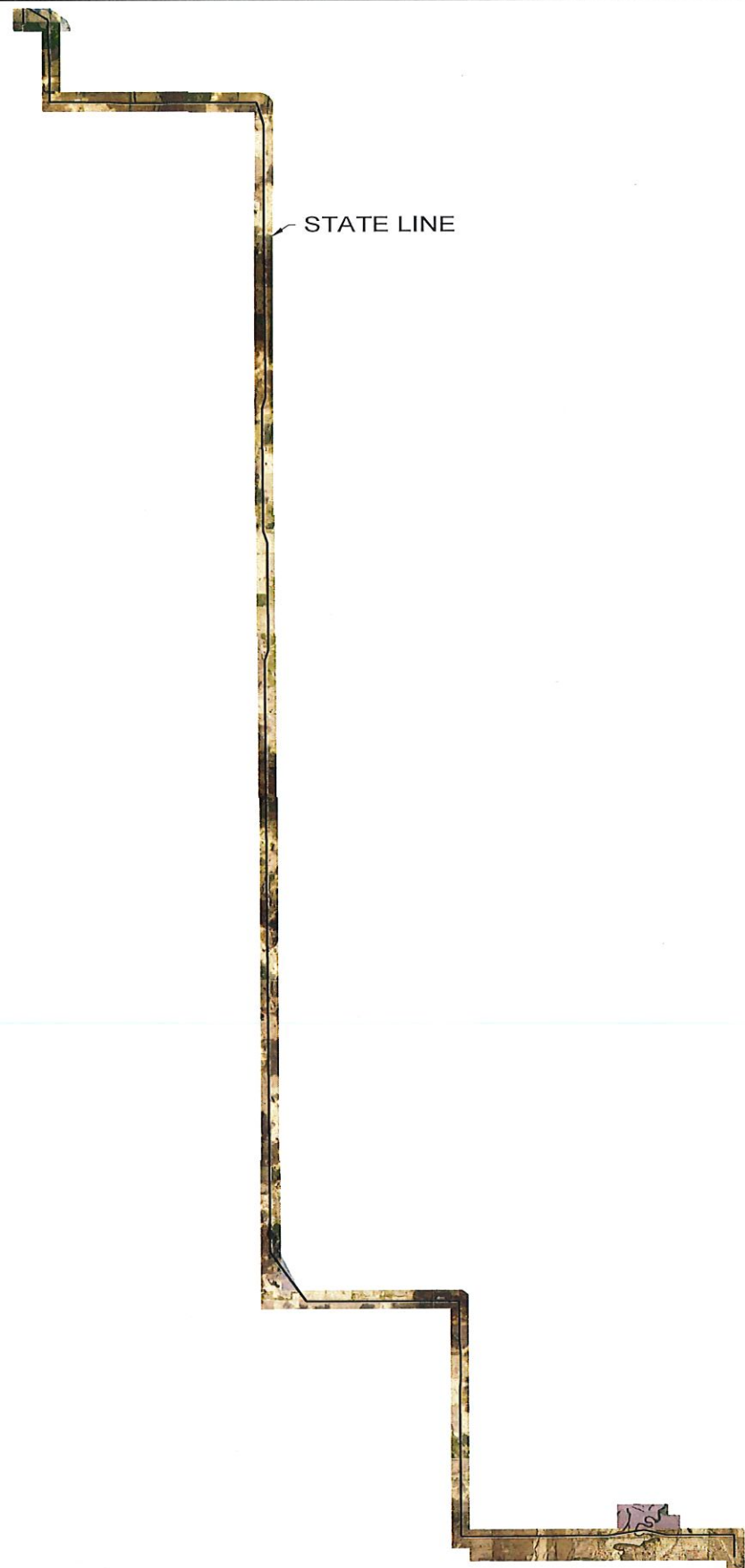
REVISIONS					APPROVALS	DATE	DESIGN DATA
					DRAWN BY: GMD	02/03/17	CONDUCTOR: (2X) 477 KCMIL 26/7 TP HAWK ACSR SHIELD WIRE: 1-3/8" 7 STRAND EHS STEEL OPGW: 1-DN0-10523
					DESIGN BY: GMD	02/03/17	
					CHECKED BY: JPW	02/03/17	
2	ISSUED FOR RECORD	JDB	JDB	JPW	03/01/19		COORDINATE SYSTEM: UTM ZONE 14N, US FT
REV	DESCRIPTION	DWN	DGN	CHK	DATE	APPROVED BY: DJF	02/03/17



BIG STONE SOUTH - ELLENDALE  
 345 KV TRANSMISSION LINE

DWG. NO.  
 BSSE-PP-101-1  
 REVISION: 2  
 136508

P13-000 DRAWING



STATE LINE

20190301  
 ISSUED FOR  
 RECORD



REVISIONS					
REV	DESCRIPTION	DWN	DGN	CHK	DATE
2	ISSUED FOR RECORD	JDB	JDB	JPW	03/01/19

APPROVALS		DATE
DRAWN BY: GMD		02/03/17
DESIGN BY: GMD		02/03/17
CHECKED BY: JPW		02/03/17
APPROVED BY: DJF		02/03/17

DESIGN DATA	
CONDUCTOR: (2X) 477 KCMIL 26/7 TP HAWK ACSR	
SHIELD WIRE: 1-3/8" 7 STRAND EHS STEEL	
OPGW: 1-DN0-10523	
COORDINATE SYSTEM: UTM ZONE 14N, US FT	



BIG STONE SOUTH - ELLENDALE  
 345 KV TRANSMISSION LINE

DWG. NO. BSSE-PP-101-2
REVISION: 2
136508

P13-840-DRAWING



20190301  
 ISSUED FOR  
 RECORD



REVISIONS					
REV	DESCRIPTION	DWN	DGN	CHK	DATE
2	ISSUED FOR RECORD	JDB	JDB	JPW	03/01/19

APPROVALS		DATE
DRAWN BY: GMD		02/03/17
DESIGN BY: GMD		02/03/17
CHECKED BY: JPW		02/03/17
APPROVED BY: DJF		02/03/17

DESIGN DATA	
CONDUCTOR: (2X) 477 KCMIL 26/7 TP HAWK ACSR	
SHIELD WIRE: 1-3/8" 7 STRAND EHS STEEL	
OPGW: 1-DN0-10523	
COORDINATE SYSTEM: UTM ZONE 14N, US FT	

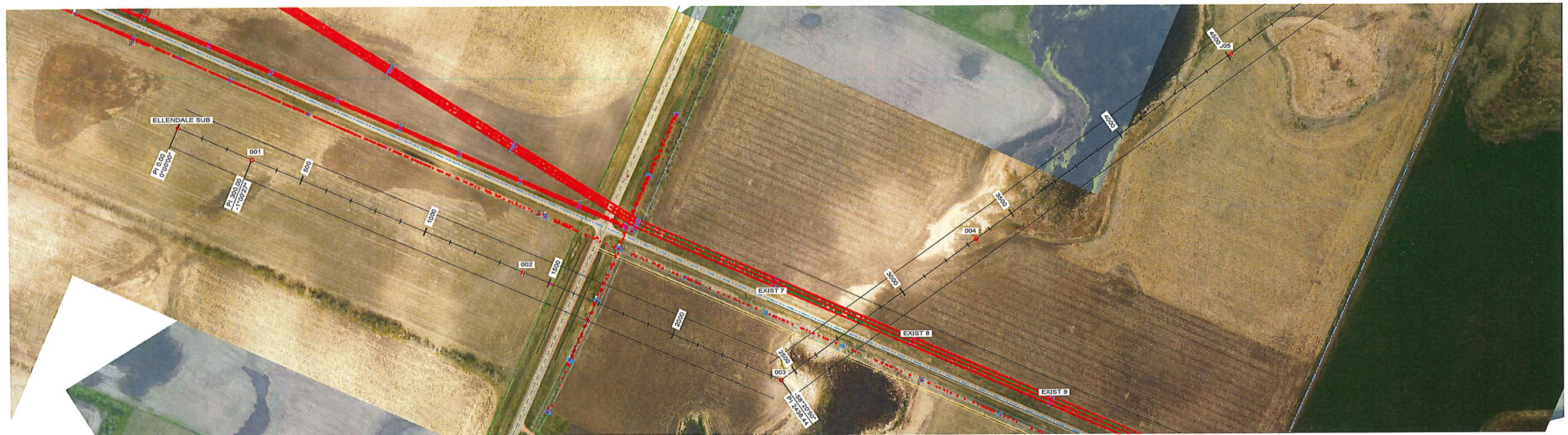
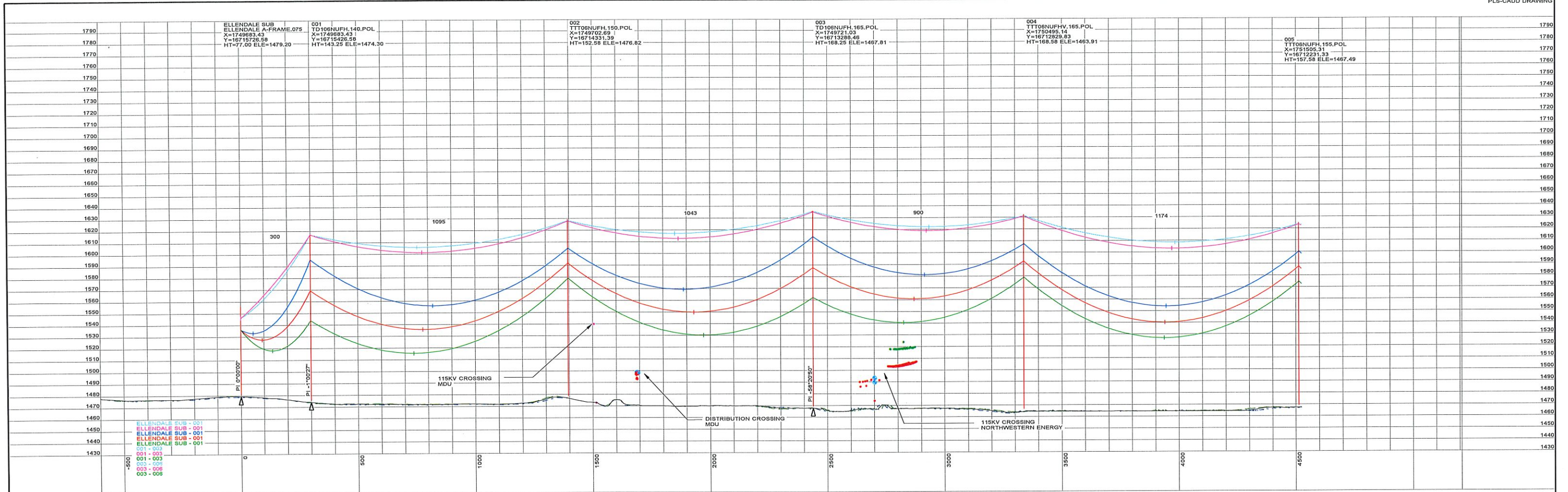


BIG STONE SOUTH - ELLENDALE  
 345 KV TRANSMISSION LINE



DWG. NO. BSSE-PP-101-3
REVISION: 2
136508

PLS-CADD DRAWING



STRS: ELLENDALE SUB - 005

20190301  
ISSUED FOR  
RECORD



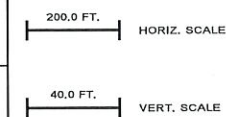
REVISIONS					
REV	DESCRIPTION	DWN	DGN	CHK	DATE
2	ISSUED FOR RECORD	JDB	JDB	JPW	03/01/19

APPROVALS		DATE
DRAWN BY: GMD		02/03/17
DESIGN BY: GMD		02/03/17
CHECKED BY: JPW		02/03/17
APPROVED BY: DJF		02/03/17

DESIGN DATA	
CONDUCTOR: (2X) 477 KCMIL 26/7 TP HAWK ACSR	
SHIELD WIRE: 1-3/8" 7 STRAND EHS STEEL	
OPGW: 1-DN0-10523	
COORDINATE SYSTEM: UTM ZONE 14N, US FT	

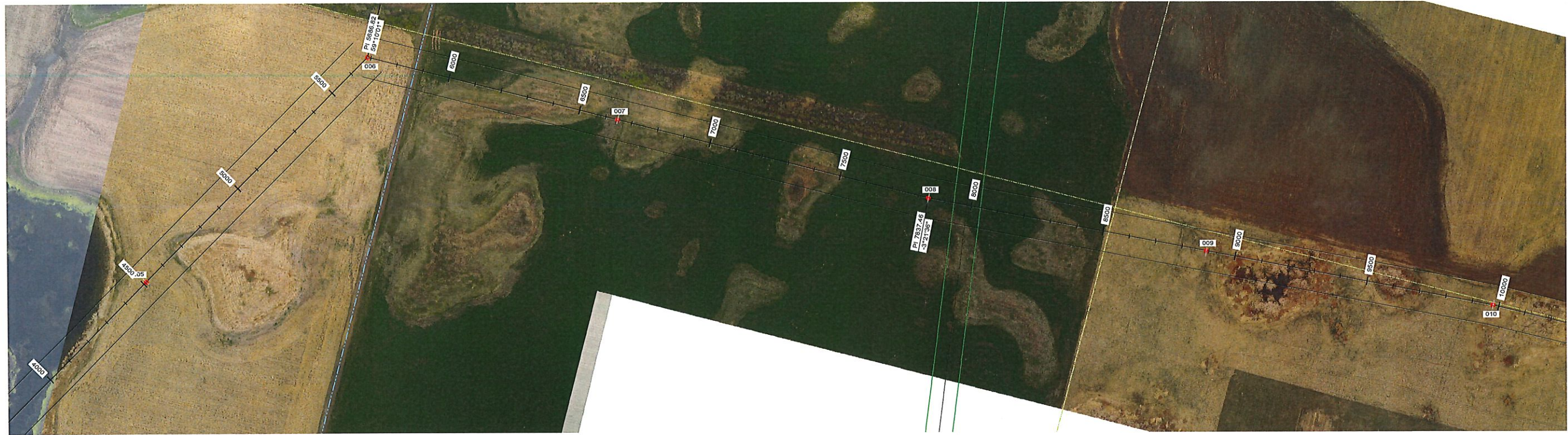
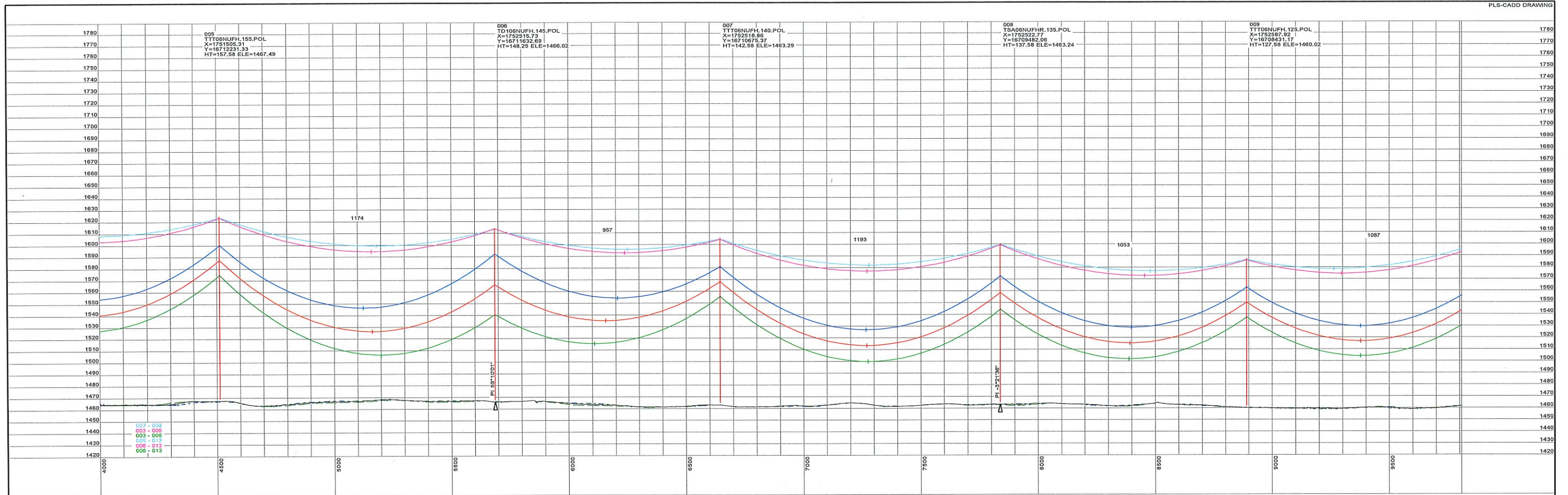


BIG STONE SOUTH - ELLENDALE  
345 KV TRANSMISSION LINE



DWG. NO.  
BSSE-PP-101-4  
REVISION: 2  
136508

PLS-CADD DRAWING



STRS: 005 - 009

20190301  
ISSUED FOR  
RECORD



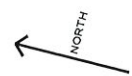
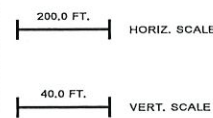
REVISIONS				
REV	DESCRIPTION	DWN	DGN	CHK
2	ISSUED FOR RECORD	JDB	JDB	JPW
				03/01/19

APPROVALS	DATE
DRAWN BY: GMD	02/03/17
DESIGN BY: GMD	02/03/17
CHECKED BY: JPW	02/03/17
APPROVED BY: DJF	02/03/17

DESIGN DATA	
CONDUCTOR: (2X) 477 KCMIL 26/7 TP HAWK ACSR	
SHIELD WIRE: 1-3/8" 7 STRAND EHS STEEL	
OPGW: 1-DN0-10523	
COORDINATE SYSTEM: UTM ZONE 14N, US FT	

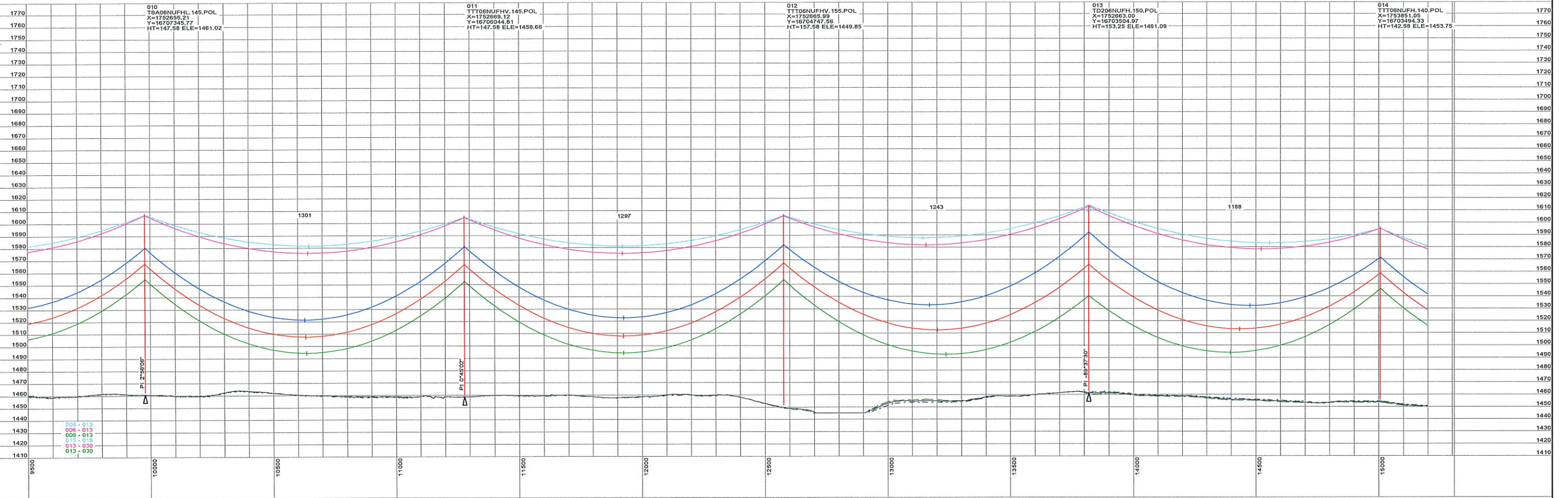


BIG STONE SOUTH - ELLENDALE  
345 KV TRANSMISSION LINE



DWG. NO.  
BSSE-PP-101-5  
REVISION: 2  
136508

PLS-CADD DRAWING



STRS: 010 - 014

20190301  
ISSUED FOR  
RECORD



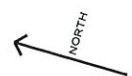
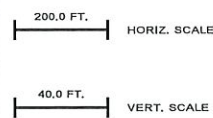
REVISIONS				
REV	DESCRIPTION	DWN	DGN	CHK
2	ISSUED FOR RECORD	JDB	JDB	JPW
				03/01/19

APPROVALS		DATE
DRAWN BY: GMD		02/03/17
DESIGN BY: GMD		02/03/17
CHECKED BY: JPW		02/03/17
APPROVED BY: DJF		02/03/17

DESIGN DATA	
CONDUCTOR: (2X) 477 KCMIL 26/7 TP HAWK ACSR	
SHIELD WIRE: 1-3/8" 7 STRAND EHS STEEL	
OPGW: 1-DN0-10523	
COORDINATE SYSTEM: UTM ZONE 14N, US FT	

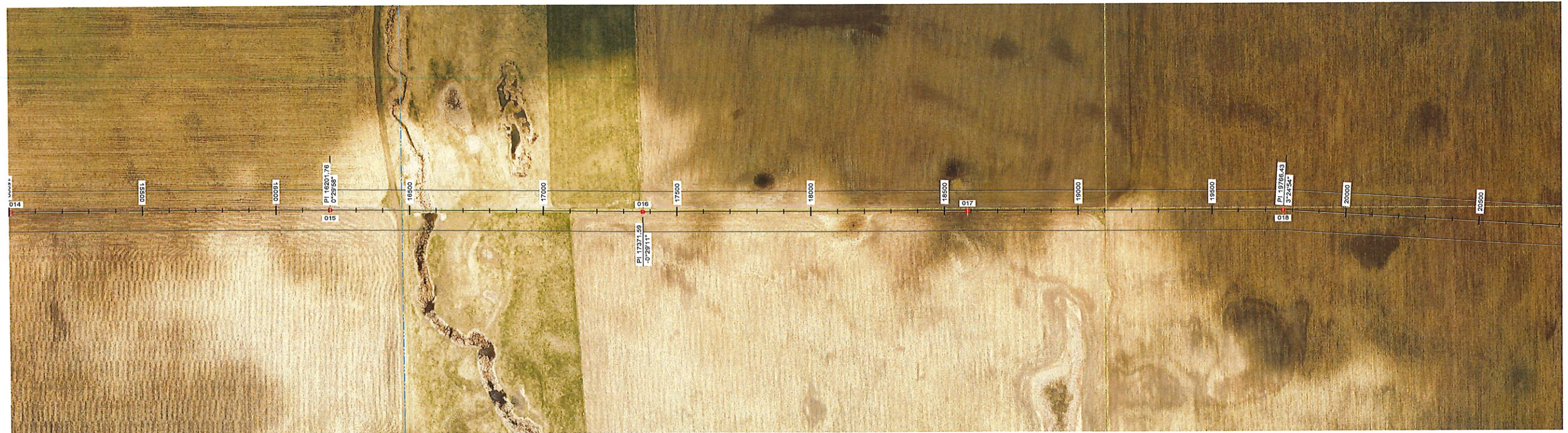
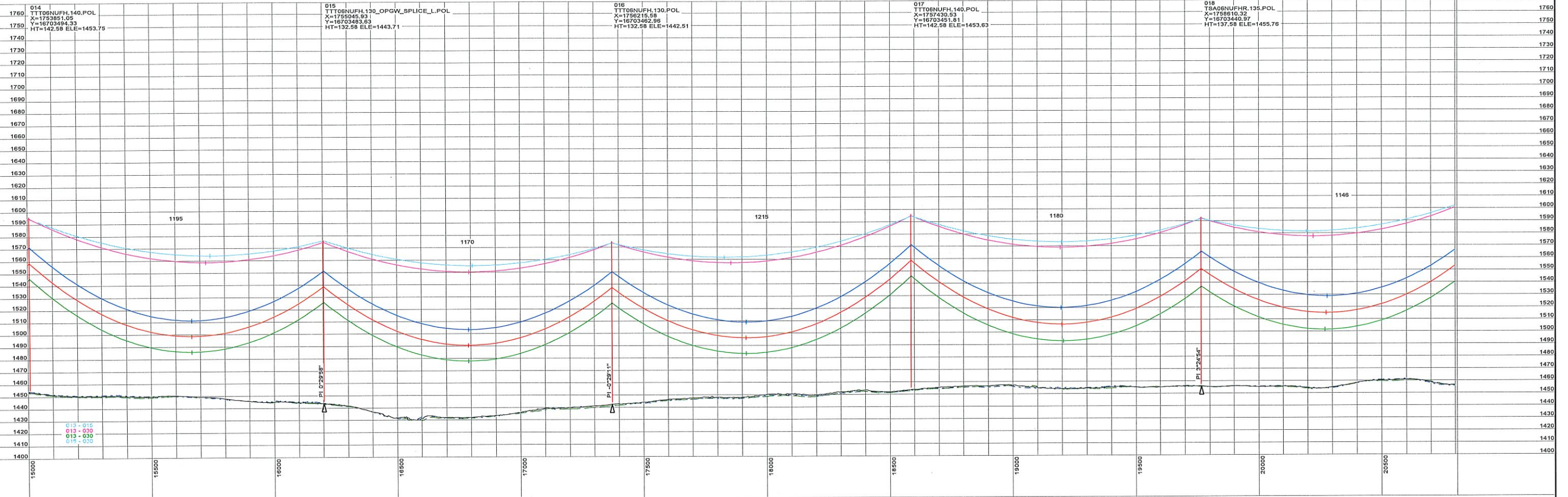


BIG STONE SOUTH - ELLENDALE  
345 KV TRANSMISSION LINE



DWG. NO.  
BSSE-PP-101-6  
REVISION: 2  
136508

PLS-CADD DRAWING



STRS: 014 - 018

20190301  
ISSUED FOR  
RECORD



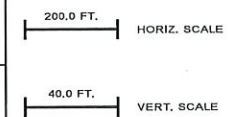
REVISIONS				
REV	DESCRIPTION	DWN	DGN	CHK
2	ISSUED FOR RECORD	JDB	JDB	JPW
				03/01/19

APPROVALS	DATE
DRAWN BY: GMD	02/03/17
DESIGN BY: GMD	02/03/17
CHECKED BY: JPW	02/03/17
APPROVED BY: DJF	02/03/17

DESIGN DATA	
CONDUCTOR: (2X) 477 KCMIL 26/7 TP HAWK ACSR	
SHIELD WIRE: 1-3/8" 7 STRAND EHS STEEL	
OPGW: 1-DN0-10523	
COORDINATE SYSTEM: UTM ZONE 14N, US FT	

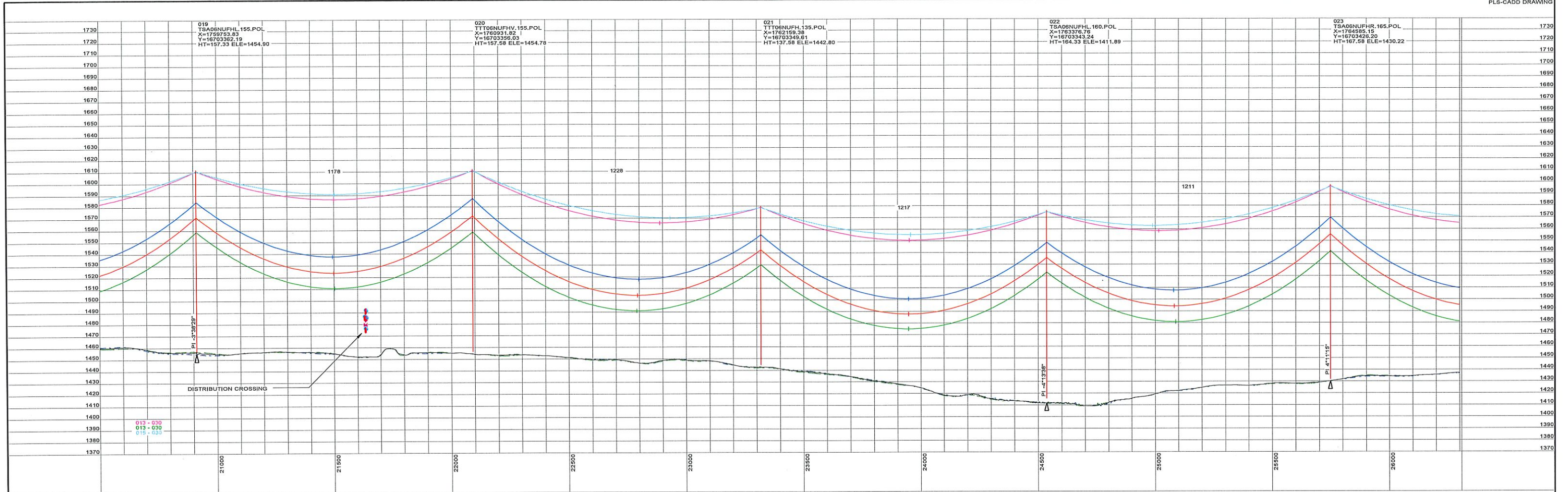


BIG STONE SOUTH - ELLENDALE  
345 KV TRANSMISSION LINE



DWG. NO.  
BSSE-PP-101-7  
REVISION: 2  
136508

PLS-CADD DRAWING



STRS: 019 - 023

20190301  
ISSUED FOR  
RECORD



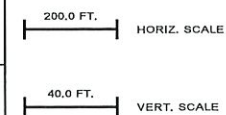
REVISIONS		APPROVALS		DATE	DESIGN DATA
2	ISSUED FOR RECORD	JDB	JDB	03/01/19	CONDUCTOR: (2X) 477 KCMIL 26/7 TP HAWK ACSR SHIELD WIRE: 1-3/8" 7 STRAND EHS STEEL OPGW: 1-DN0-10523
REV	DESCRIPTION	DWN	DGN	CHK	DATE

DRAWN BY: GMD	02/03/17
DESIGN BY: GMD	02/03/17
CHECKED BY: JPW	02/03/17
APPROVED BY: DJF	02/03/17

COORDINATE SYSTEM: UTM ZONE 14N, US FT

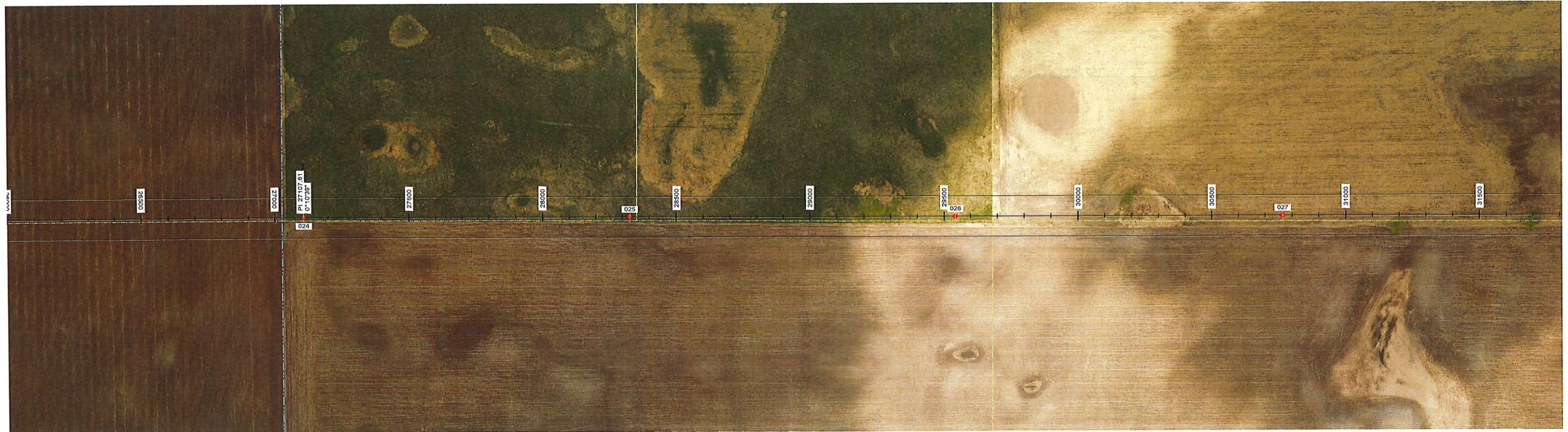
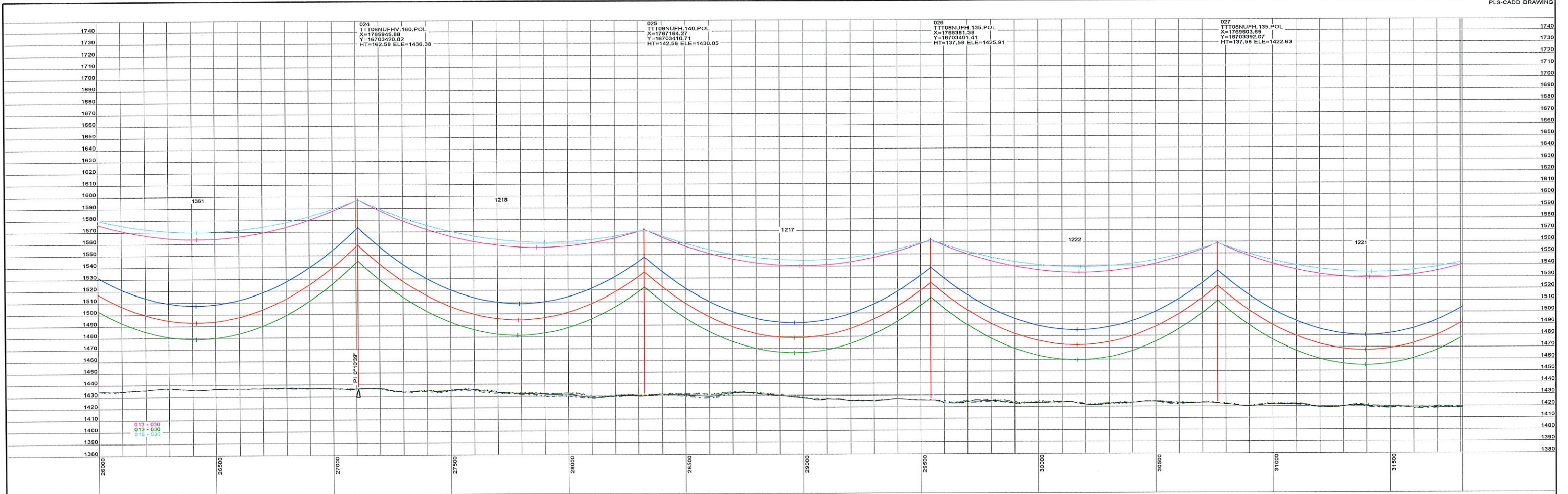


BIG STONE SOUTH - ELLENDALE  
345 KV TRANSMISSION LINE



DWG. NO.  
BSSE-PP-101-8  
REVISION: 2  
136508

PLS-CADD DRAWING



STRS: 024 - 027

20190301  
ISSUED FOR  
RECORD



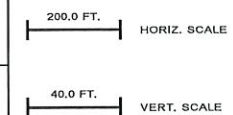
REVISIONS					
REV	DESCRIPTION	DWN	DGN	CHK	DATE
2	ISSUED FOR RECORD	JDB	JDB	JPW	03/01/19

APPROVALS	DATE
DRAWN BY: GMD	02/03/17
DESIGN BY: GMD	02/03/17
CHECKED BY: JPW	02/03/17
APPROVED BY: DJF	02/03/17

DESIGN DATA  
 CONDUCTOR: (2X) 477 KCMIL 26/7 TP HAWK ACSR  
 SHIELD WIRE: 1-3/8" 7 STRAND EHS STEEL  
 OPGW: 1-DN0-10523  
 COORDINATE SYSTEM: UTM ZONE 14N, US FT

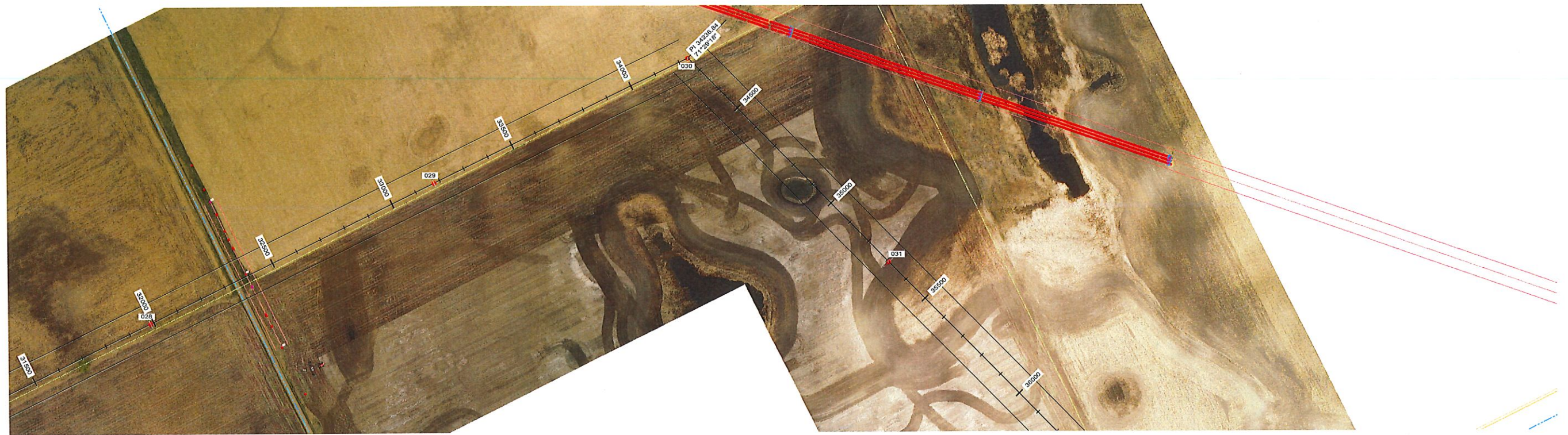
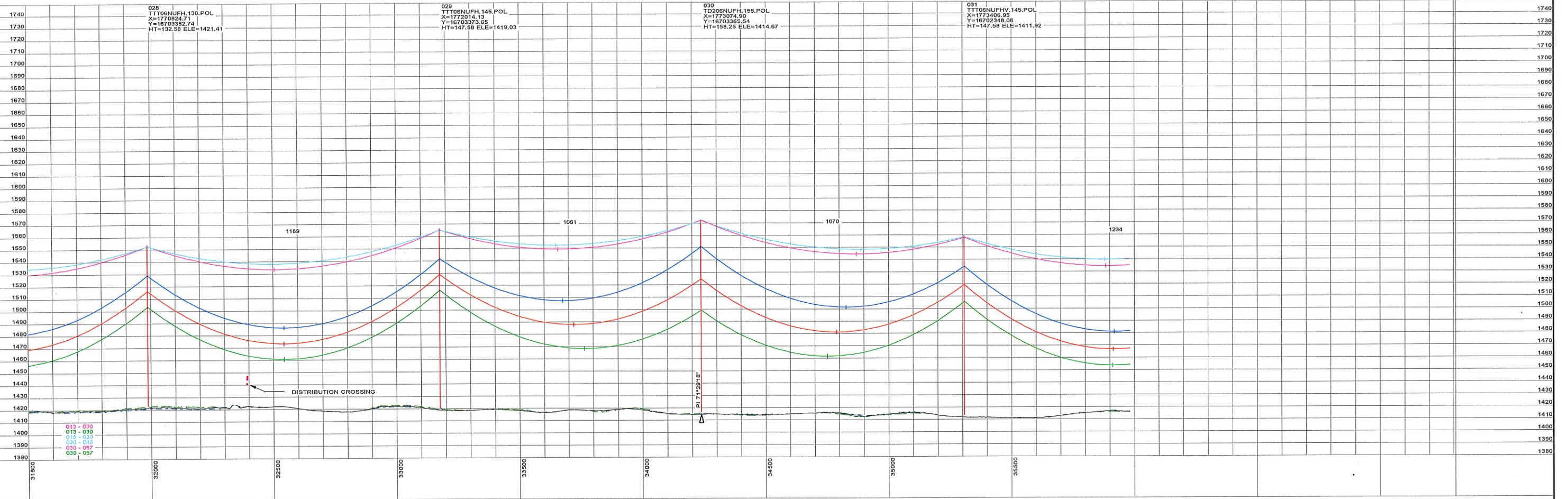


BIG STONE SOUTH - ELLENDALE  
345 KV TRANSMISSION LINE



DWG. NO.  
BSSE-PP-101-9  
REVISION: 2  
136508

PLS-CADD DRAWING



STRS: 028 - 031

20190301  
ISSUED FOR  
RECORD



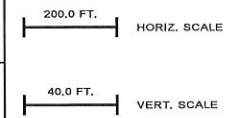
REVISIONS				
REV	DESCRIPTION	DWN	DGN	CHK
2	ISSUED FOR RECORD	JDB	JDB	JPW
				03/01/19

APPROVALS		DATE
DRAWN BY: GMD		02/03/17
DESIGN BY: GMD		02/03/17
CHECKED BY: JPW		02/03/17
APPROVED BY: DJF		02/03/17

DESIGN DATA  
 CONDUCTOR: (2X) 477 KCMIL 26/7 TP HAWK ACSR  
 SHIELD WIRE: 1-3/8" 7 STRAND EHS STEEL  
 OPGW: 1-DN0-10523  
 COORDINATE SYSTEM: UTM ZONE 14N, US FT

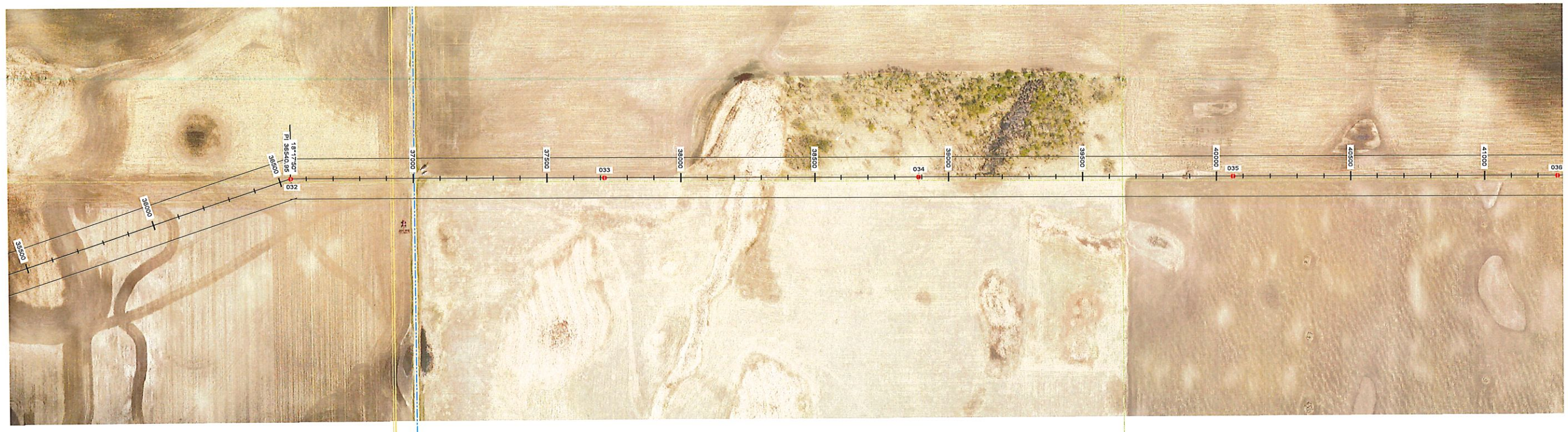
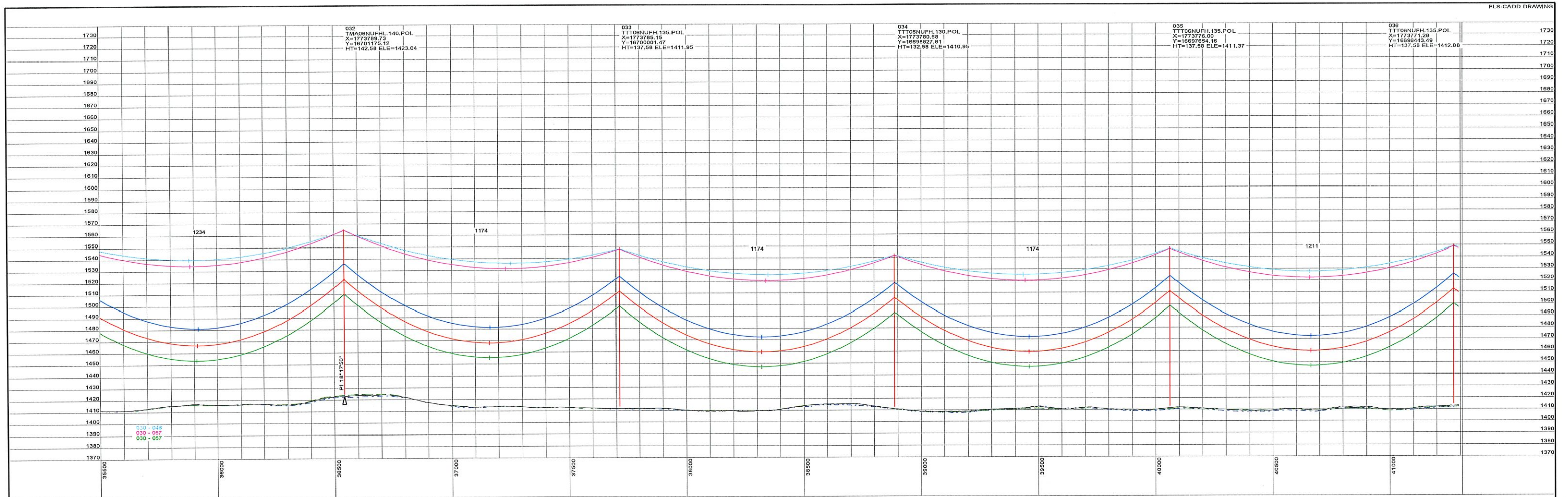


BIG STONE SOUTH - ELLENDALE  
345 KV TRANSMISSION LINE



DWG. NO.  
BSSE-PP-101-10  
REVISION: 2  
136508

PLS-CADD DRAWING



STRS: 032 - 036

20190301  
ISSUED FOR  
RECORD



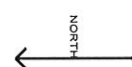
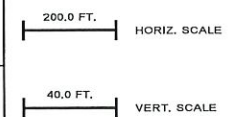
REVISIONS				
REV	DESCRIPTION	DWN	DGN	CHK
2	ISSUED FOR RECORD	JDB	JDB	JPW
				03/01/19

APPROVALS	DATE
DRAWN BY: GMD	02/03/17
DESIGN BY: GMD	02/03/17
CHECKED BY: JPW	02/03/17
APPROVED BY: DJF	02/03/17

DESIGN DATA  
 CONDUCTOR: (2X) 477 KCMIL 26/7 TP HAWK ACSR  
 SHIELD WIRE: 1-3/8" 7 STRAND EHS STEEL  
 OPGW: 1-DN0-10523  
 COORDINATE SYSTEM: UTM ZONE 14N, US FT

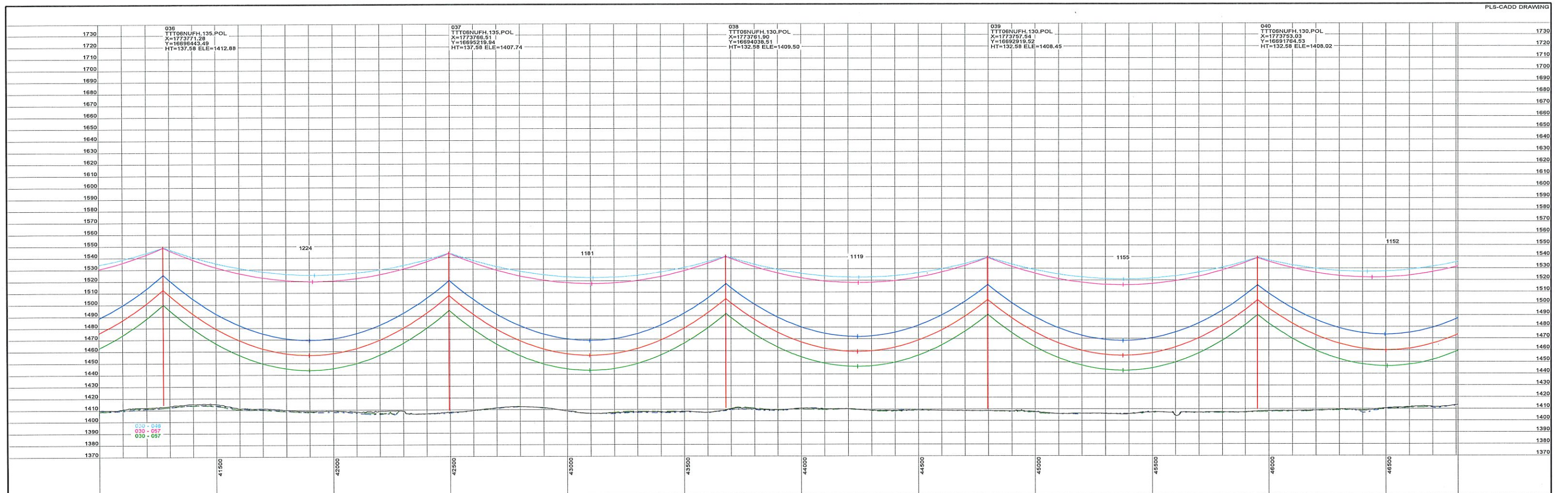


BIG STONE SOUTH - ELLENDALE  
345 KV TRANSMISSION LINE



DWG. NO.  
BSSE-PP-101-11  
REVISION: 2  
136508

PLS-CADD DRAWING



STRS: 036 - 040

20190301  
ISSUED FOR  
RECORD



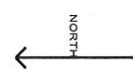
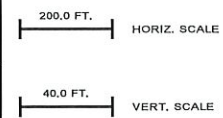
REVISIONS				
REV	DESCRIPTION	DWN	DGN	CHK
2	ISSUED FOR RECORD	JDB	JDB	JPW
				03/01/19

APPROVALS	DATE
DRAWN BY: GMD	02/03/17
DESIGN BY: GMD	02/03/17
CHECKED BY: JPW	02/03/17
APPROVED BY: DJF	02/03/17

DESIGN DATA  
 CONDUCTOR: (2X) 477 KCMIL 26/7 TP HAWK ACSR  
 SHIELD WIRE: 1-3/8" 7 STRAND EHS STEEL  
 OPGW: 1-DN0-10523  
 COORDINATE SYSTEM: UTM ZONE 14N, US FT

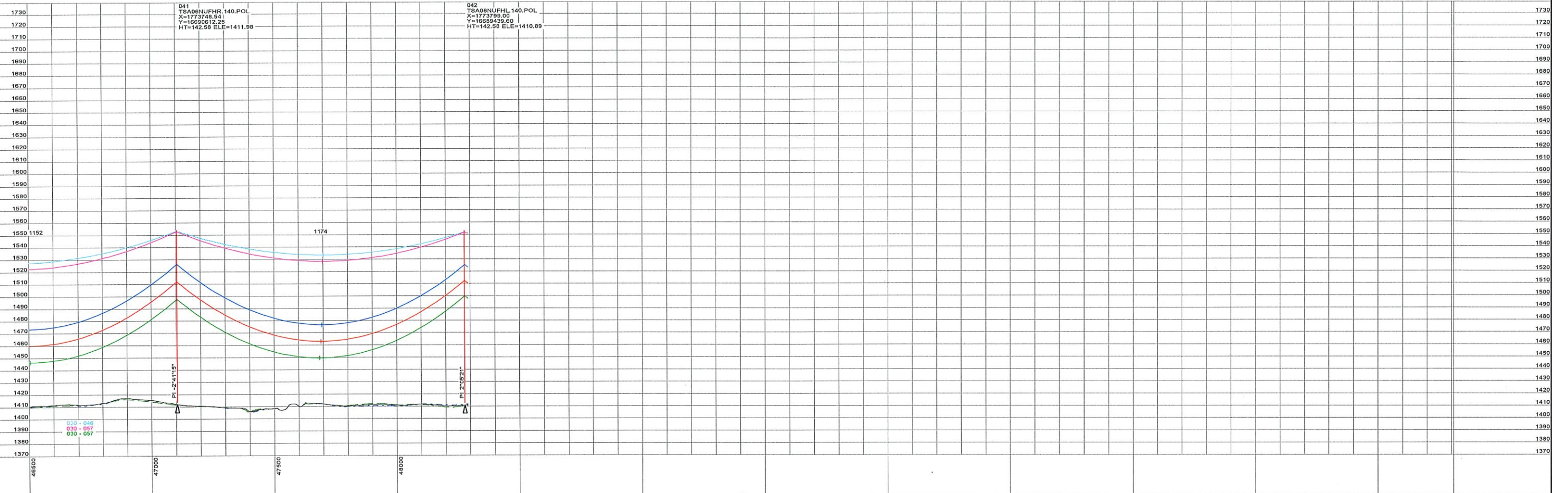


BIG STONE SOUTH - ELLENDALE  
345 KV TRANSMISSION LINE



DWG. NO.  
BSSE-PP-101-12  
REVISION: 2  
136508

PLS-CADD DRAWING



STRS: 041 - 042

20190301  
ISSUED FOR  
RECORD



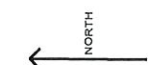
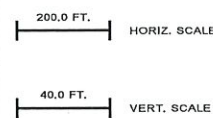
REVISIONS				
REV	DESCRIPTION	DWN	DGN	CHK
2	ISSUED FOR RECORD	JDB	JDB	JPW
				03/01/19

APPROVALS	DATE
DRAWN BY: GMD	02/03/17
DESIGN BY: GMD	02/03/17
CHECKED BY: JPW	02/03/17
APPROVED BY: DJF	02/03/17

DESIGN DATA	
CONDUCTOR: (2X) 477 KCMIL 26/7 TP HAWK ACSR	
SHIELD WIRE: 1-3/8" 7 STRAND EHS STEEL	
OPGW: 1-DN0-10523	
COORDINATE SYSTEM: UTM ZONE 14N, US FT	



BIG STONE SOUTH - ELLENDALE  
345 KV TRANSMISSION LINE



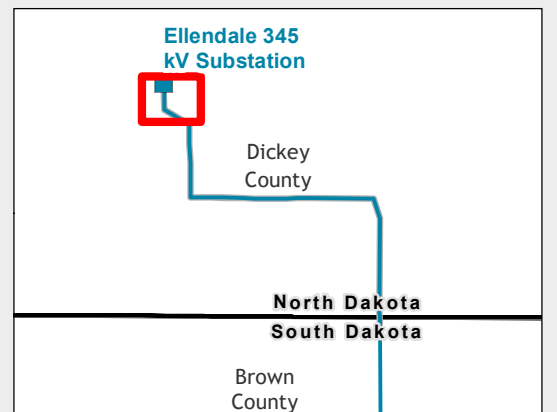
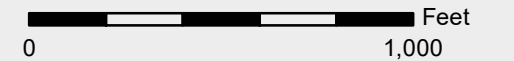
DWG. NO.  
BSSE-PP-101-13  
REVISION: 2  
136508

**Figure 1**  
Big Stone South to Ellendale  
345 kV Transmission Line Project  
North Dakota

- North Dakota Corridor (2017)
- Facility Structures (2017)
- Facility Structures (2019 - Final)
- Facility ROW (2017)
- Facility ROW (2019 - Final)
- Ellendale 345kV Substation Boundary (2019)
- Ellendale 345kV Substation Boundary (2017)
- Field Reviewed Wetland / Other Waters
- Desktop Delineated Wetlands
- Dwelling - Occupied
- Dwelling - Unknown/Vacant
- Ag/Other Structure
- Utility
- Communication Tower
- Electric Transmission Line
- Oil or Gas Pipeline
- Sections
- Township
- City Boundary



Scale 1:6,000



Date: 4/25/2019

