



MDU 345 kV Transmission Line near Ellendale, North Dakota Construction Completion INSPECTION Report No. 4

Inspector Name:

Robert J. Youness (Ulteig) – bob.youness@ulteig.com, Mobile: (913)481-6700

Weather:

Cloudy: 29 to 40 degrees F

Job Site Attendees:

Robert J. Youness, Ulteig

GENERAL INFORMATION

Inspection Date: 11-08-2019 and 11-22-2019

Precipitation: 0.00

**Job Site Construction Meeting
Construction As-built Inspection
Transmission Poles 001 thru 041 and Ellendale 345 KV Substation**

Report Number: PU-13-840

Ulteig Project Number: R15.01328

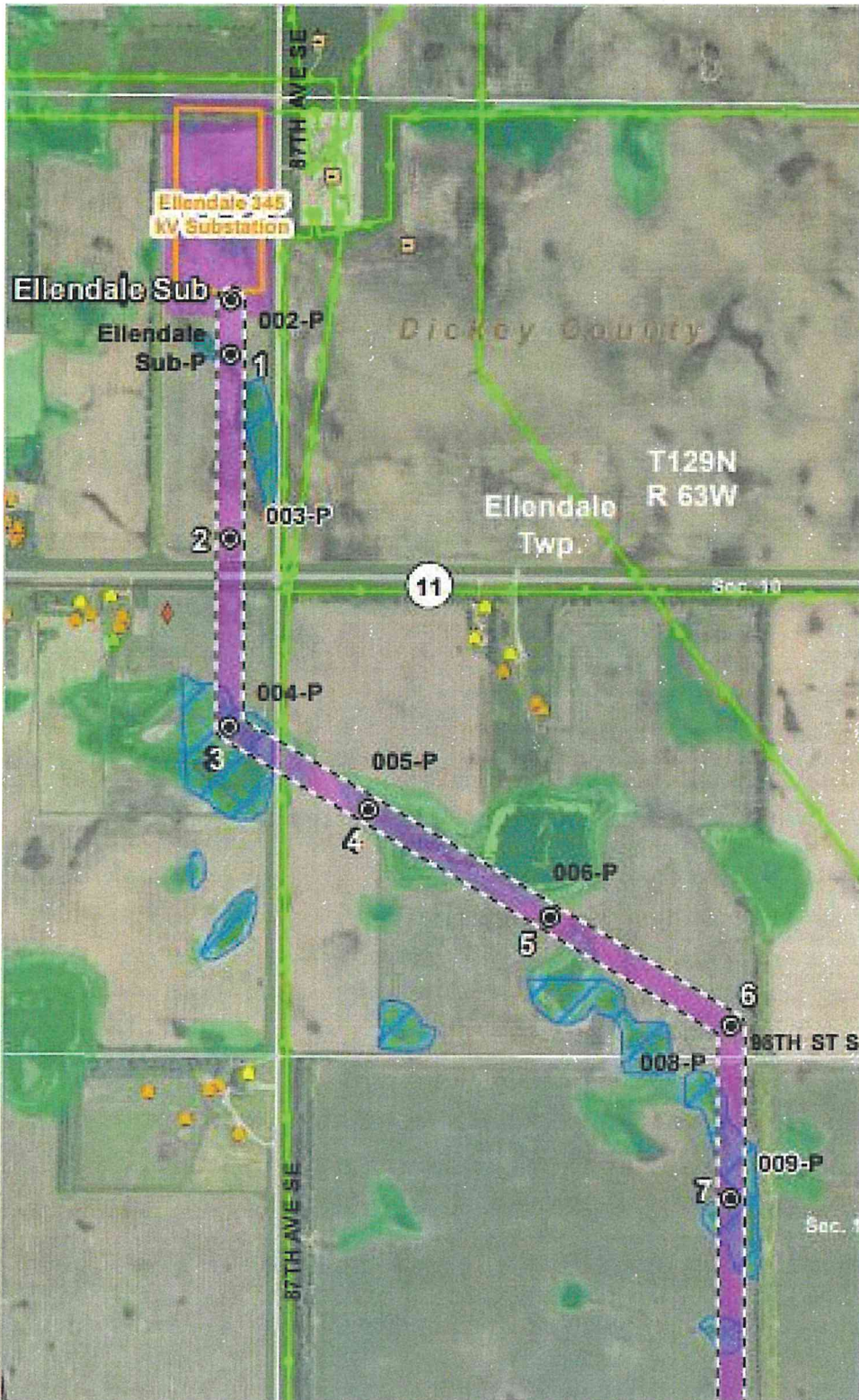
Follow up to verify conditions upon completion of Construction- Jobsite Inspection:

In accordance with the executed contract between Ulteig and the PSC of ND, dated January 5, 2016, - Ulteig performed the AS-BUILT Construction Inspection upon completion of replacement of topsoil and grading, fertilization and seeding of the entire project area and the as constructed conditions of the substation and transmission line poles 001 thru 041.

All work was performed in a satisfactory condition by the contractor and was in accordance with the agreements and requirements identified by the PSC Order. for areas disturbed by construction and around the entrances to the jobsite.

The substation site is located west of Ellendale, North Dakota. The transmission line is located to the west and south of Ellendale and runs from the substation to the South Dakota border.

Included in this report are photographs of the as constructed conditions of the jobsite.



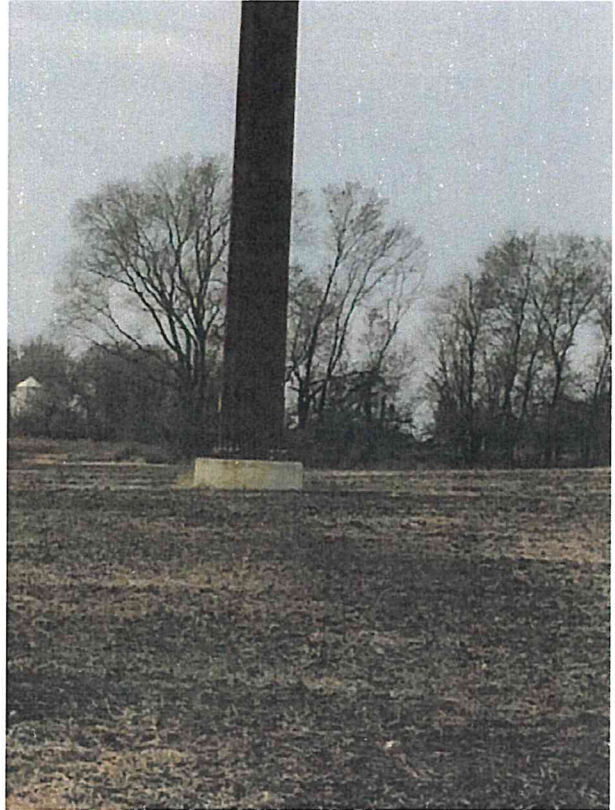
Location Map- Exhibit 1
Power Poles 001 thru
007
Ellendale Transmission
Line Project - PU13-840

The power pole construction activities included the completion of foundations, installation of transmission poles and pulling of electric transmission cable.

The locations maps were part of the report to the PSC, from the utility company. The number of the foundations are shown adjacent to the Pole Numbers.



Power Pole No. 001 Looking W.



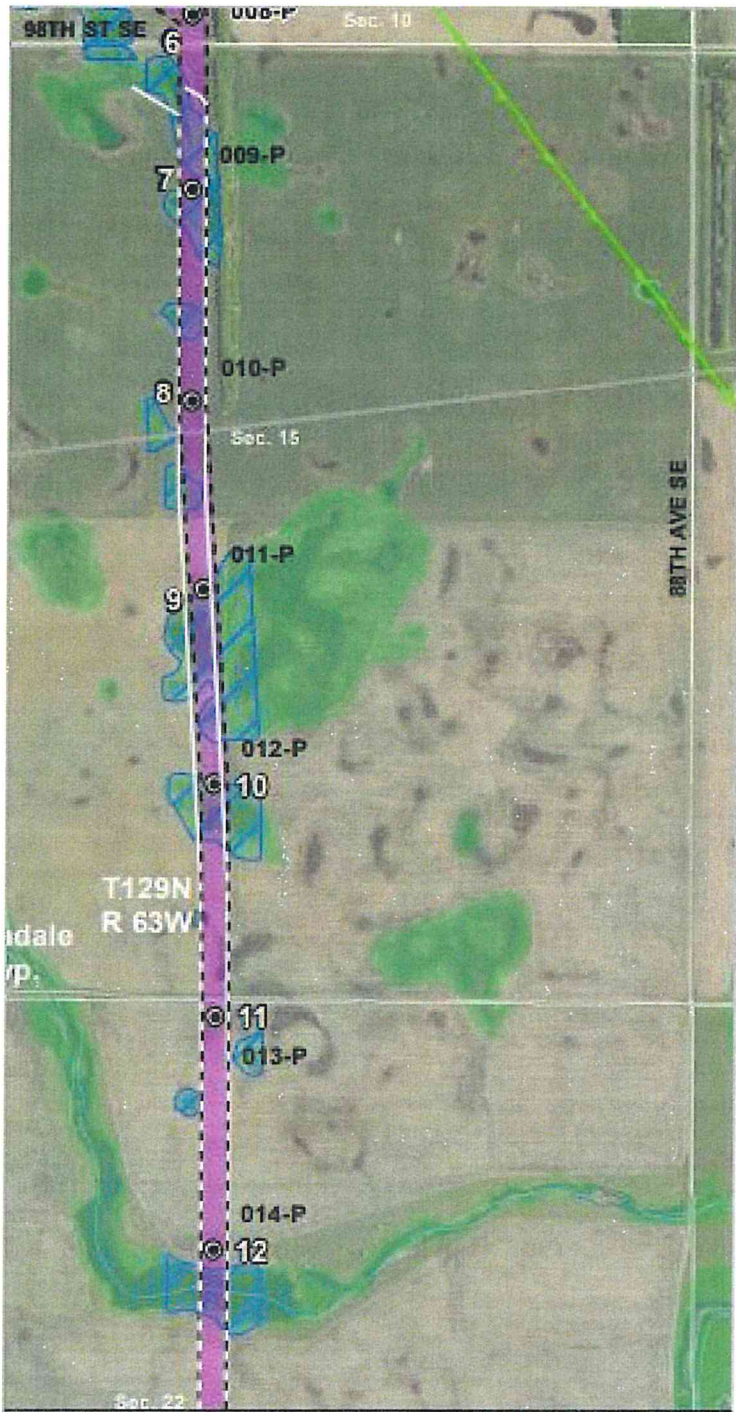
Power Pole No. 002 Looking W.



Base of Pole No. 003 Looking SE



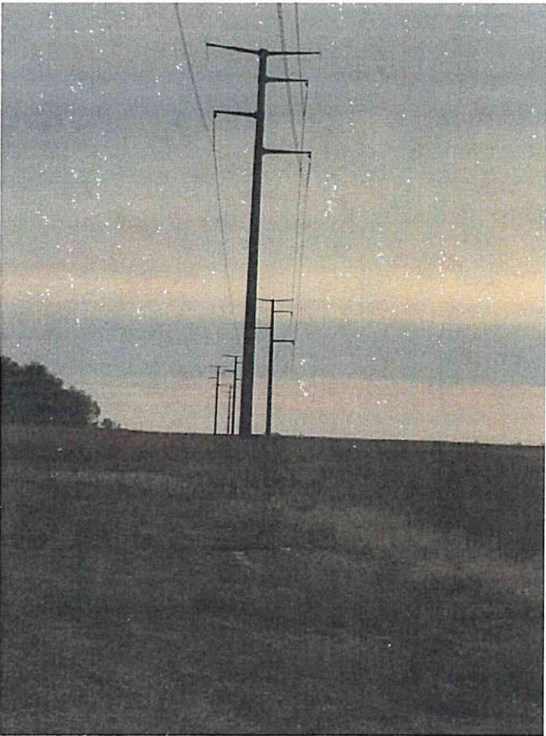
Power Poles 004, 005, 006 Looking East



Location Map Exhibit 2 Power Poles 006 thru 012
Ellendale Transmission Line Project - PU13-840



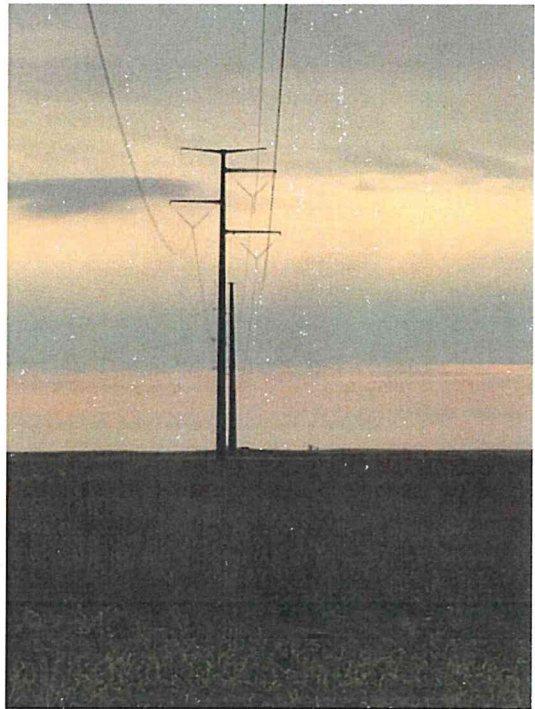
Base of Power Pole No. 007 Looking W



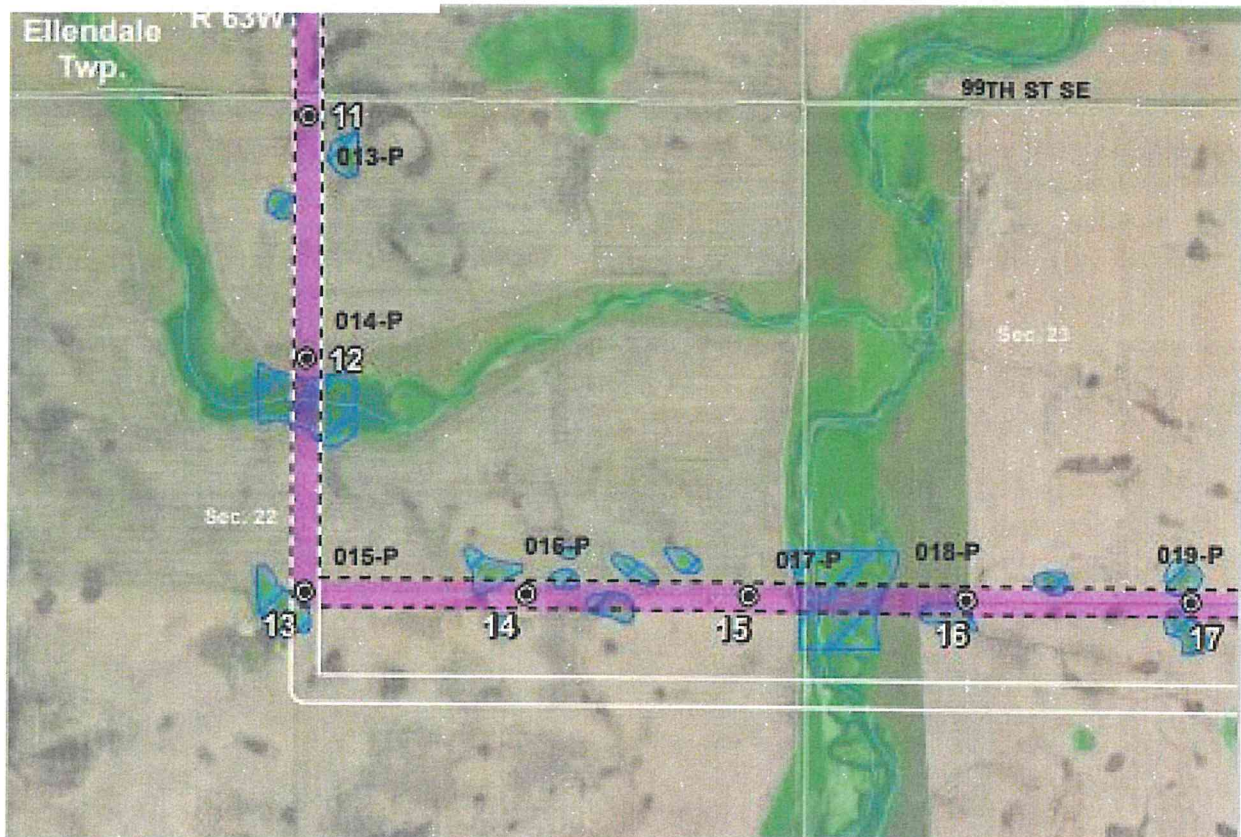
Power Poles 007, 008, 009, 010, 011 Looking South



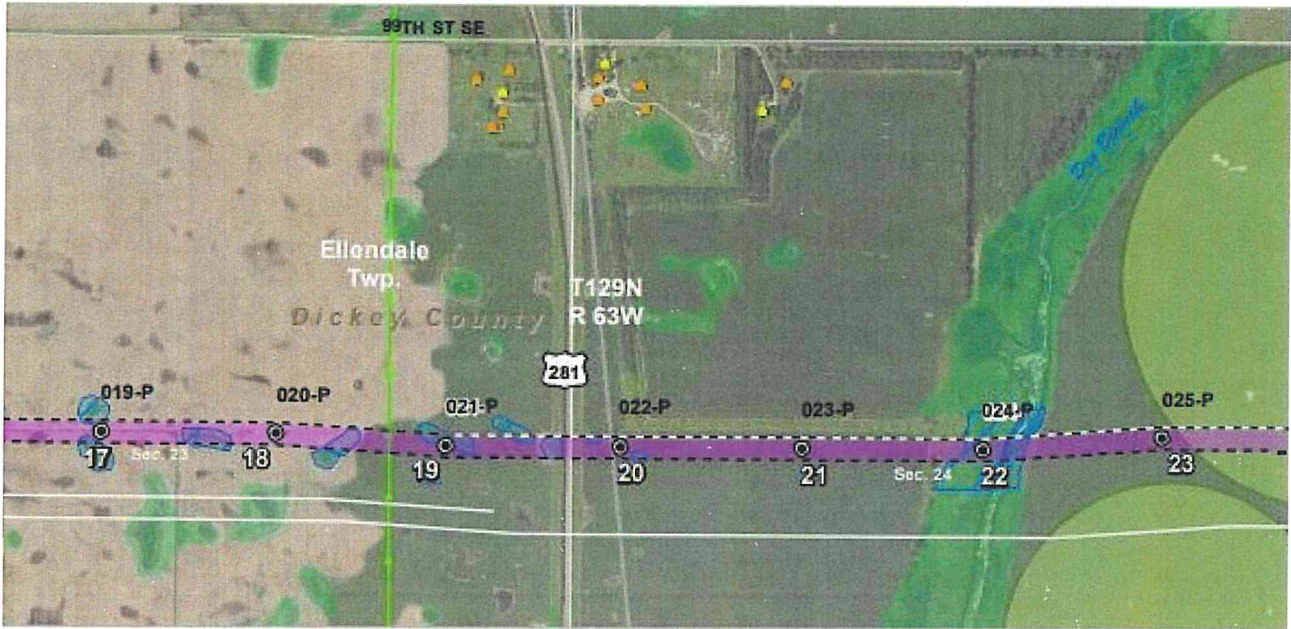
Poles 011 Base Looking S.



Power Pole No.012, 013 Looking South



Location Map 3 Power Poles 011 thru 017 Ellendale Transmission Line Project - PU13-840



Location Map Exhibit 4 Power Poles 017 thru 023 Ellendale Transmission Line Project PU13



Power Poles 019, 018, 017 Hwy. 281 Looking W.



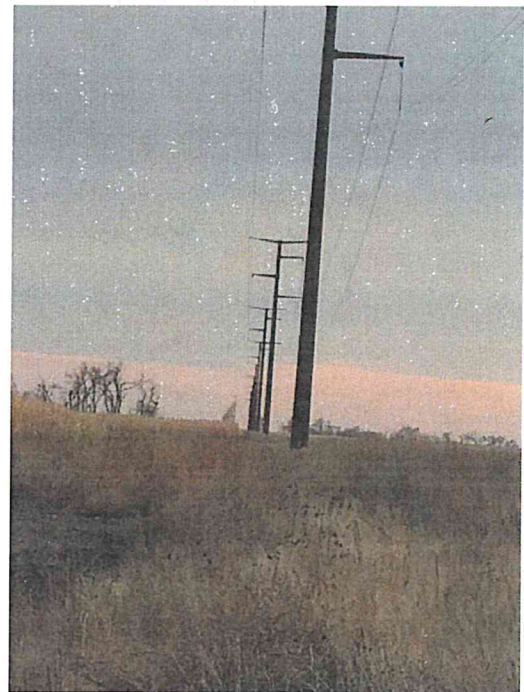
Power Poles 020, 021, 022, 023 Hwy 281 Looking E.



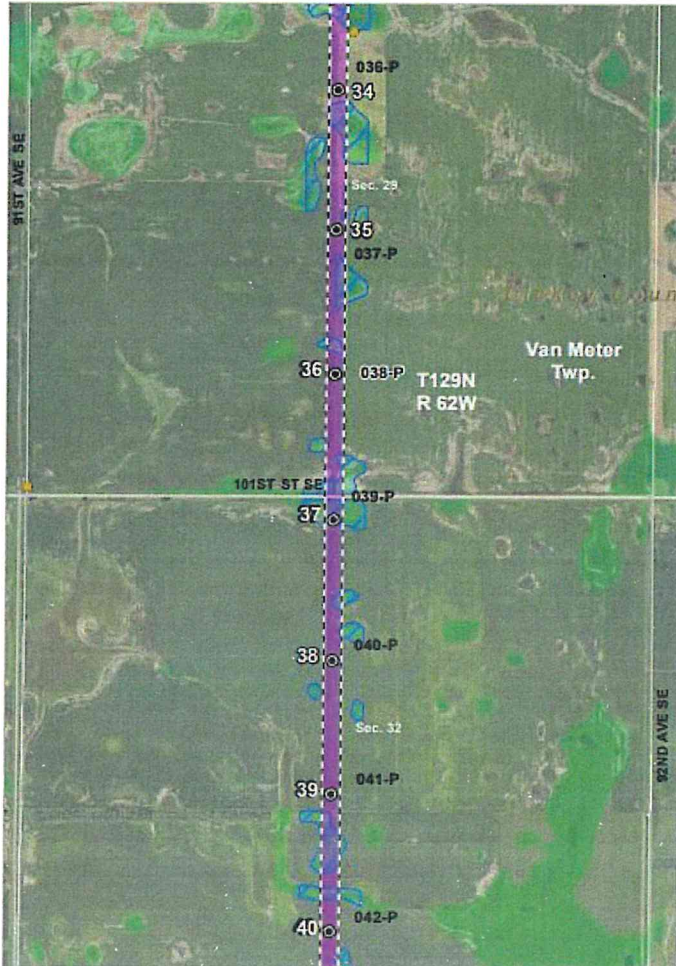
Location Map 5 Power Poles 024 thru 033 Ellendale Transmission Line Project - PU13-840



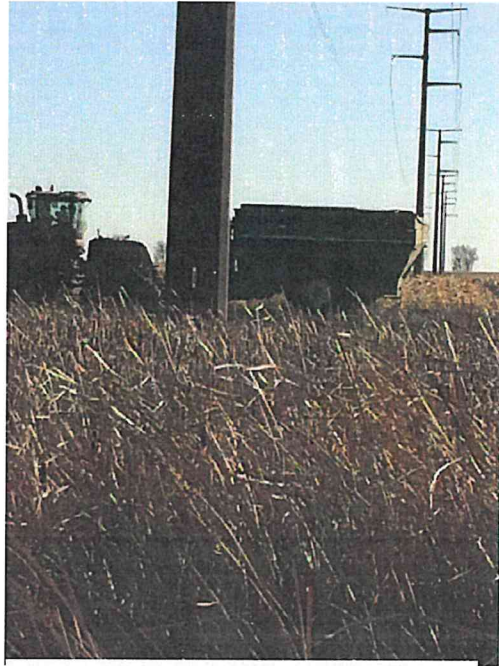
Power Poles Base 032, Looking S.



Power Poles 033, 034, 035, 036
Looking S.



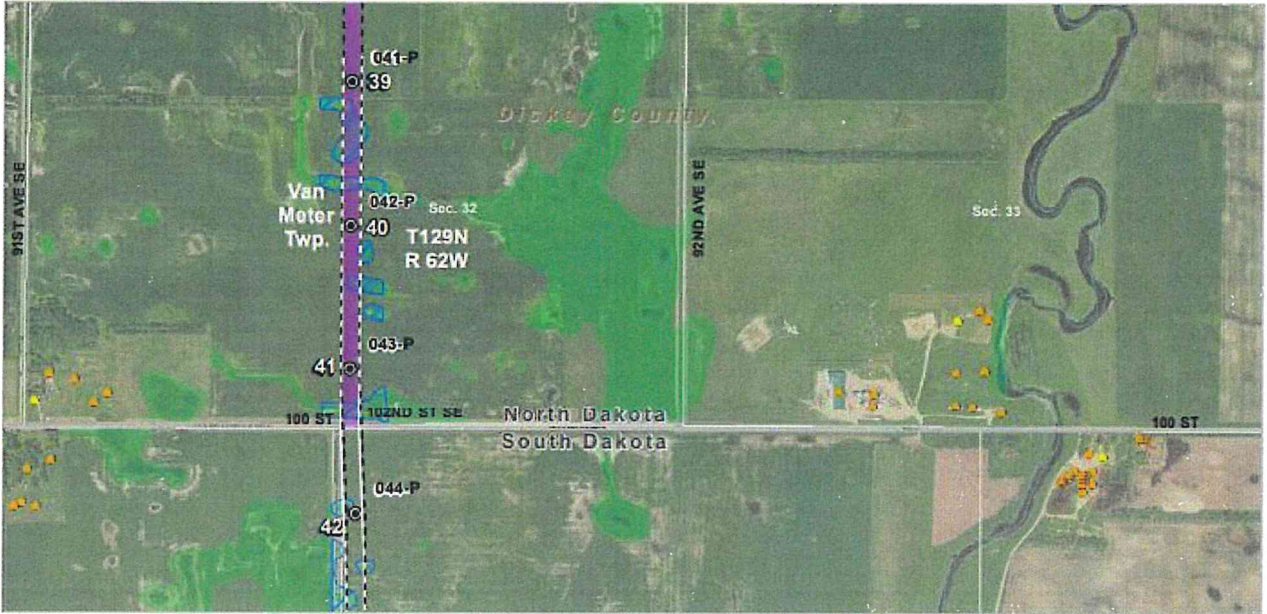
Location Map 6 Power Poles 034 thru 040 Ellendale Transmission Line Project - PU13-840



Power Poles Base 037 Looking S.
Farmer harvesting corn.



Power Poles 037, 038, 039, 040, 041, 042, 043 Looking N.



Location Map 6 Power Poles 039 040, 041 Ellendale Transmission Line Project - PU13-840



Power Poles Base 041 Looking North



Power Pole 041, 040, 039, 038, 037, 036 Looking N.



Completed Ellendale Substation Looking SE



Completed Road Right of Way on East Side of Substation Looking North

Executive Secretary
North Dakota Public Service Commission
600 E Boulevard Ave., Dept. 408 120 /
Bismarck, ND 58505-0480

CONCLUSIONS OF AS-BUILT CONSTRUCTION CONDITIONS

Inspection Conclusion:

The substation and transmission lines were constructed by two separate contractors with two separate schedules. The work has been completed by both contractors. Both contractors have performed all topsoil removal and replacement in accordance with the requirements established in the Order from the North Dakota Public Service Commission. The installation of the power poles and cable have been completed. The surface conditions have been cleaned up, and the growth of vegetation has been verified complete. The construction is completed in accordance with the PSC requirements.

In accordance with the executed contract between Ulteig and the Public Service Commission, dated April 20, 2016, all reports must be approved and signed by the lead project manager responsible for this project.

Robert J. Youness, PE

A handwritten signature in black ink that reads "Robert J. Youness".

Address Revised Since Contract Signed
Ulteig Engineers, Inc.
419 Riverwood Drive Suite 201
Bismarck, ND 58504
Cell phone: (913)481-6700