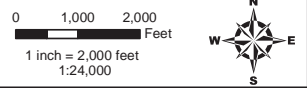
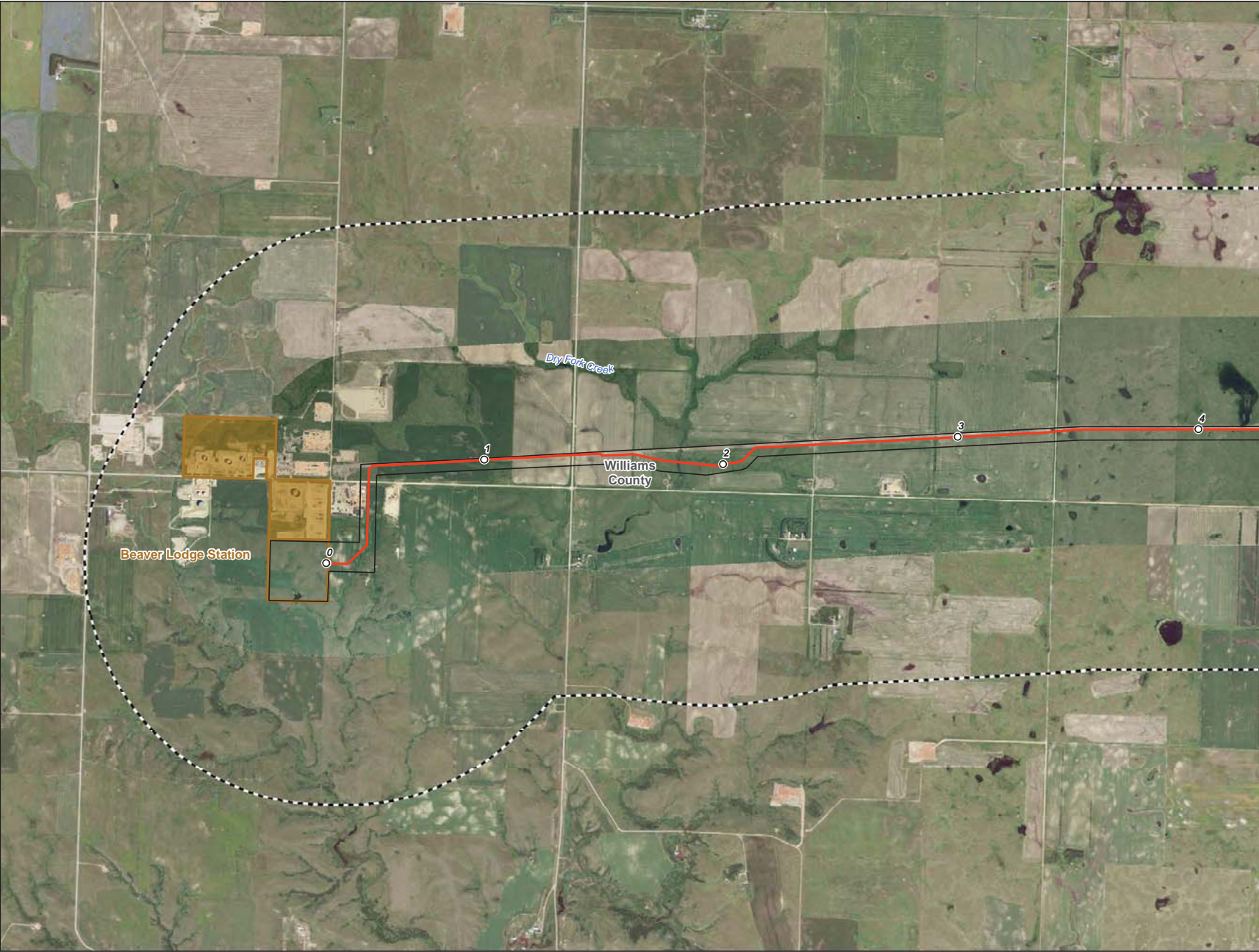


Routing Selection Criteria Maps - Exclusion Areas

Insert in binder to replace original Exhibit I.1

Exhibit I.1



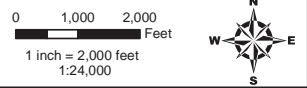
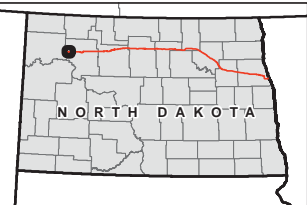
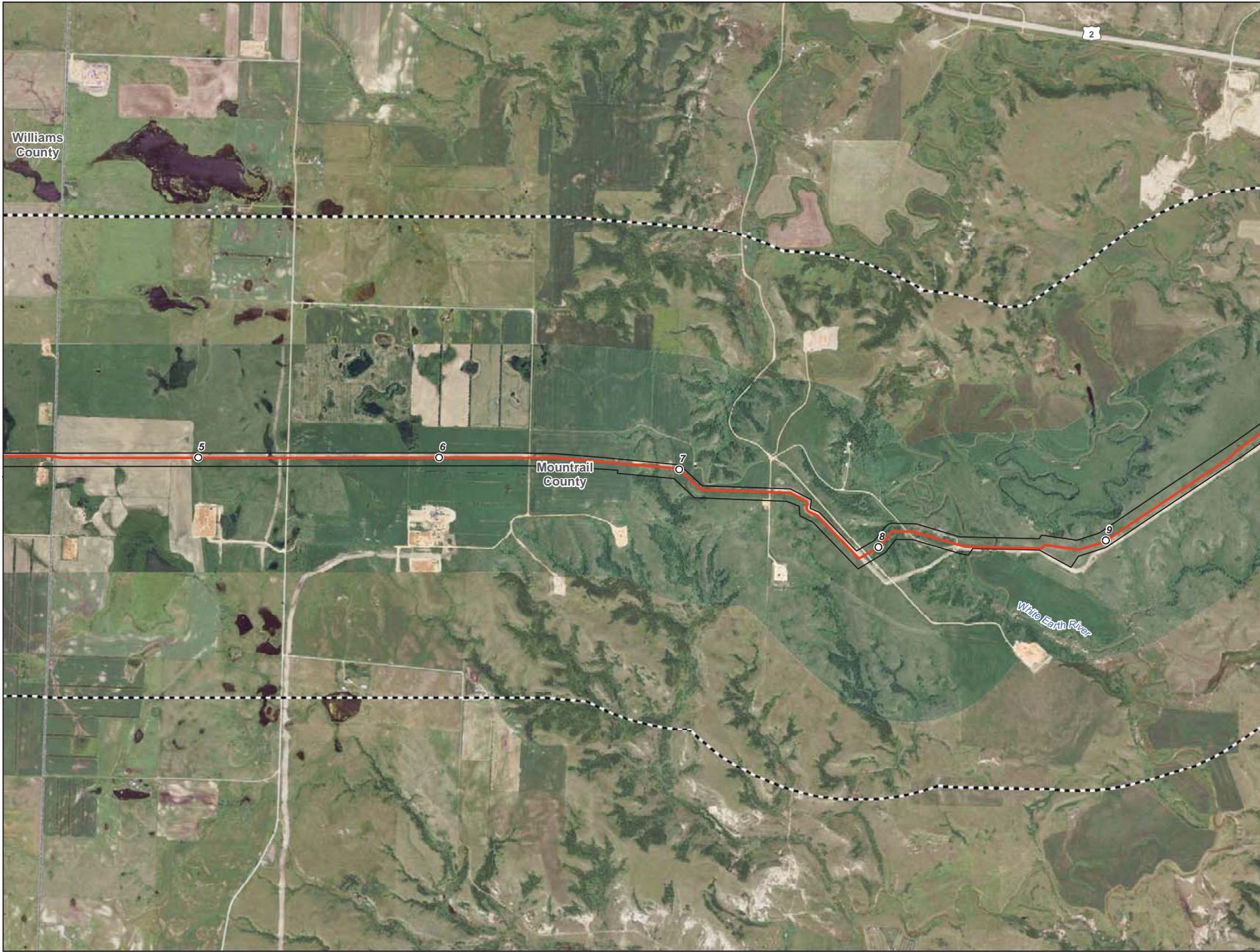
- Milepost
- Centerline
- ▭ Survey Corridor
- - - 2-mile Study Area
- ▭ Facility
- ▭ Previously Sited Facility
- ▭ County Boundary
- + Land and Water Conservation Fund Lands
- ▲ NRHP Historic Place
- ▭ USFWS-critical habitat

**Enbridge Pipelines
(North Dakota) LLC
Sandpiper Pipeline Project**

Exclusion Areas

Page 1 of 61
Williams County





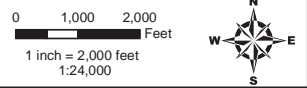
- Milepost
- Centerline
- ▭ Survey Corridor
- - - 2-mile Study Area
- ▭ Facility
- ▭ Previously Sited Facility
- ▭ County Boundary
- + Land and Water Conservation Fund Lands
- ▲ NRHP Historic Place
- ▭ USFWS-critical habitat











**Enbridge Pipelines
(North Dakota) LLC
Sandpiper Pipeline Project**

Exclusion Areas

Page 2 of 61
Mountrail County





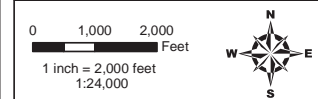
-  Milepost
-  Centerline
-  Survey Corridor
-  2-mile Study Area
-  Facility
-  Previously Sited Facility
-  County Boundary
-  Land and Water Conservation Fund Lands
-  NRHP Historic Place
-  USFWS-critical habitat

**Enbridge Pipelines
(North Dakota) LLC
Sandpiper Pipeline Project**

Exclusion Areas

Page 3 of 61
Mountrail County



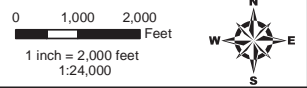


- Milepost
- Centerline
- ▭ Survey Corridor
- - - 2-mile Study Area
- ▭ Facility
- ▭ Previously Sited Facility
- ▭ County Boundary
- + Land and Water Conservation Fund Lands
- ▲ NRHP Historic Place
- ▭ USFWS-critical habitat

**Enbridge Pipelines
(North Dakota) LLC
Sandpiper Pipeline Project**

Exclusion Areas

Page 4 of 61
Mountrail County



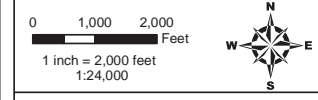
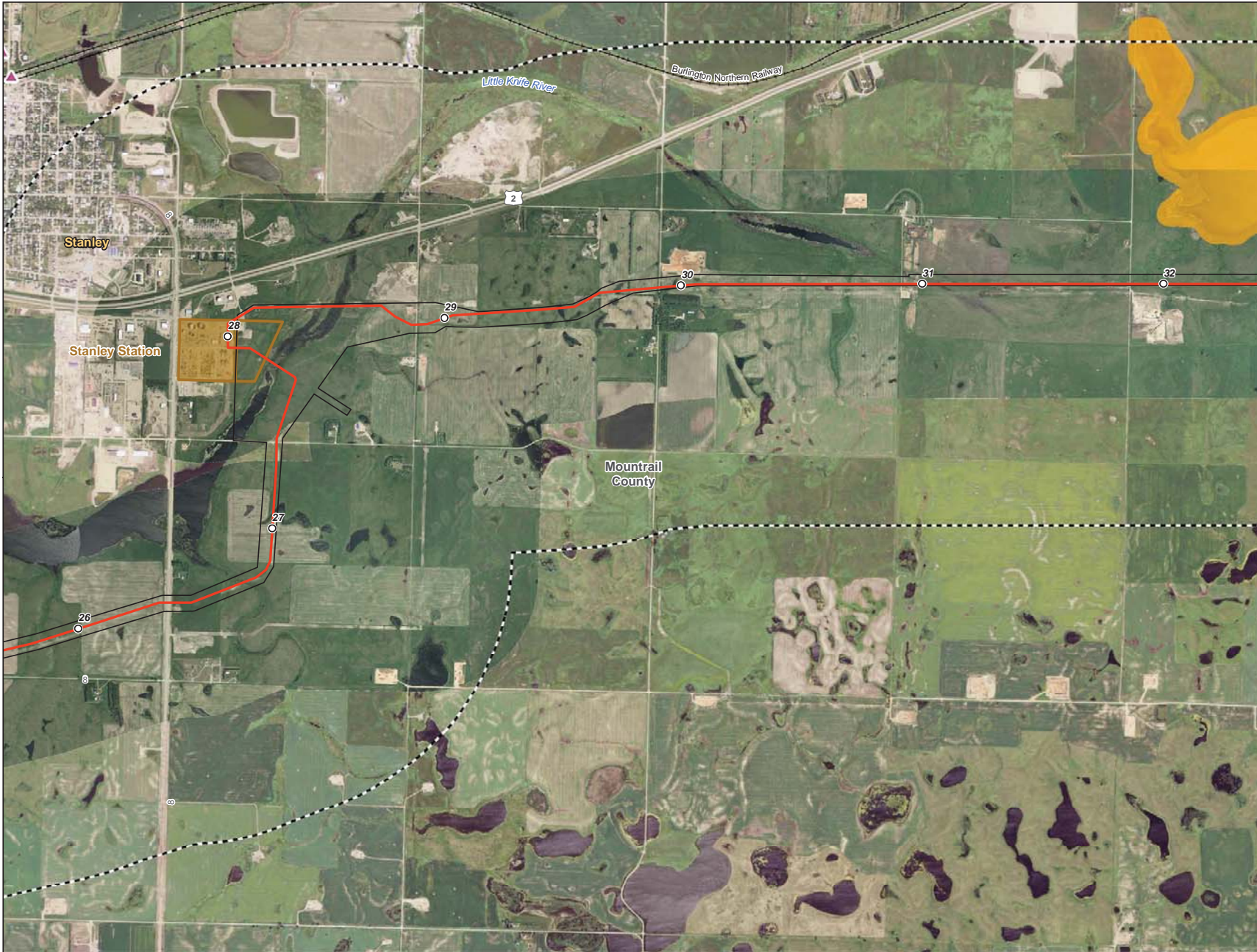
- Milepost
- Centerline
- ▭ Survey Corridor
- - - 2-mile Study Area
- ▭ Facility
- ▭ Previously Sited Facility
- ▭ County Boundary
- + Land and Water Conservation Fund Lands
- ▲ NRHP Historic Place
- USFWS-critical habitat

**Enbridge Pipelines
(North Dakota) LLC
Sandpiper Pipeline Project**

Exclusion Areas

Page 5 of 61
Mountrail County





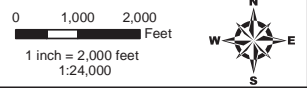
- Milepost
- Centerline
- ▭ Survey Corridor
- - - 2-mile Study Area
- ▭ Facility
- ▭ Previously Sited Facility
- ▭ County Boundary
- + Land and Water Conservation Fund Lands
- ▲ NRHP Historic Place
- USFWS-critical habitat

**Enbridge Pipelines
(North Dakota) LLC
Sandpiper Pipeline Project**

Exclusion Areas

Page 6 of 61
Mountrail County





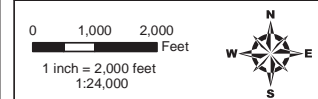
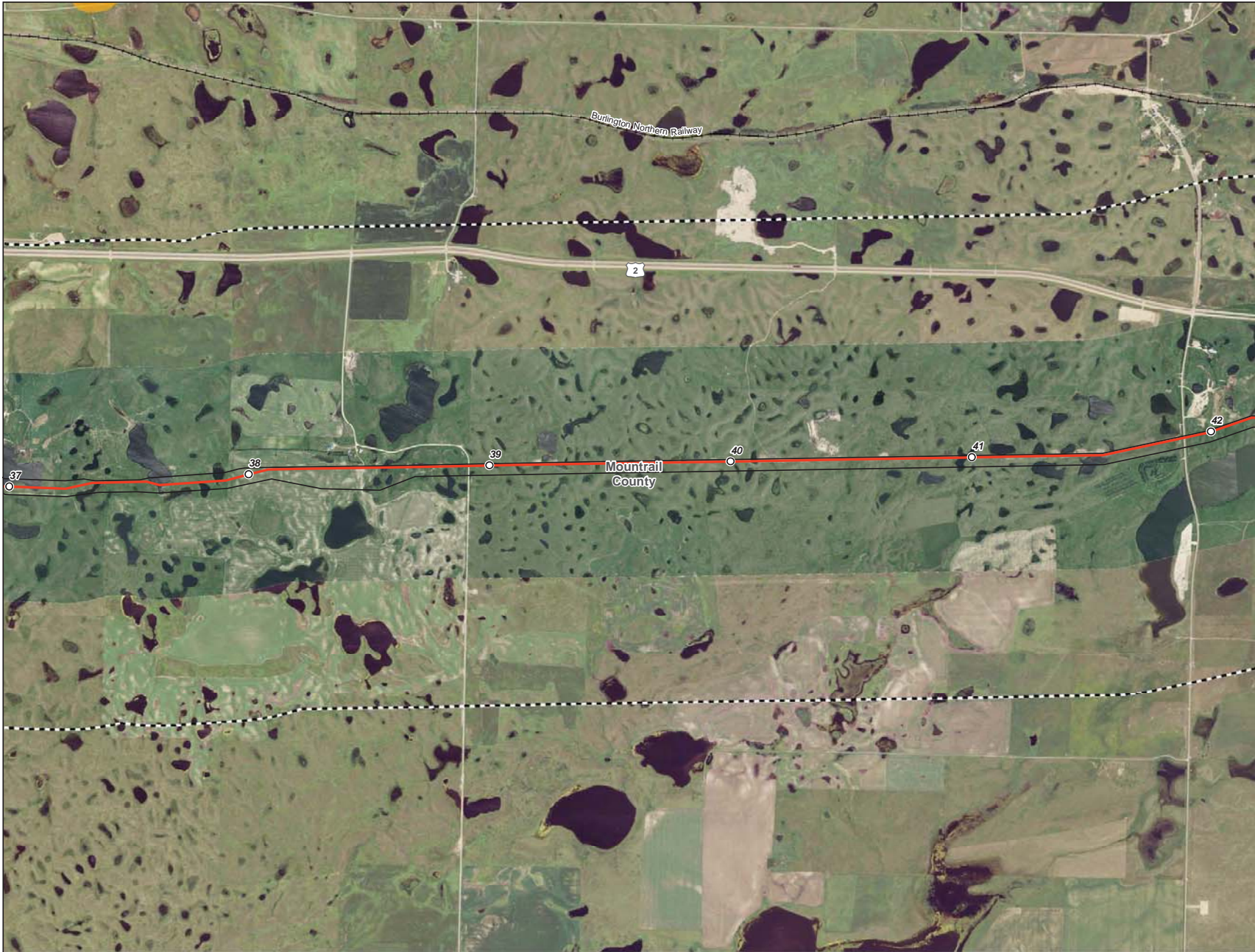
- Milepost
- Centerline
- ▭ Survey Corridor
- - - 2-mile Study Area
- ▭ Facility
- ▭ Previously Sited Facility
- ▭ County Boundary
- + Land and Water Conservation Fund Lands
- ▲ NRHP Historic Place
- USFS-critical habitat

**Enbridge Pipelines
(North Dakota) LLC
Sandpiper Pipeline Project**

Exclusion Areas

Page 7 of 61
Mountrail County





- Milepost
- Centerline
- Survey Corridor
- 2-mile Study Area
- Facility
- Previously Sited Facility
- County Boundary
- Land and Water Conservation Fund Lands
- NRHP Historic Place
- USFWS-critical habitat

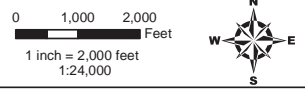
**Enbridge Pipelines
(North Dakota) LLC
Sandpiper Pipeline Project**

Exclusion Areas

Page 8 of 61
Mountrail County

ENBRIDGE

Rev. D 12/16/2013



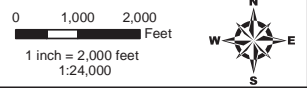
- Milepost
- Centerline
- ▭ Survey Corridor
- - - 2-mile Study Area
- ▭ Facility
- ▭ Previously Sited Facility
- ▭ County Boundary
- + Land and Water Conservation Fund Lands
- ▲ NRHP Historic Place
- USFWS-critical habitat











**Enbridge Pipelines
(North Dakota) LLC
Sandpiper Pipeline Project**

Exclusion Areas

Page 9 of 61
Mountrail County





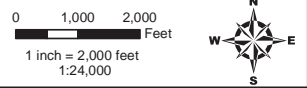
-  Milepost
-  Centerline
-  Survey Corridor
-  2-mile Study Area
-  Facility
-  Previously Sited Facility
-  County Boundary
-  Land and Water Conservation Fund Lands
-  NRHP Historic Place
-  USFWS-critical habitat

**Enbridge Pipelines
(North Dakota) LLC
Sandpiper Pipeline Project**

Exclusion Areas

Page 10 of 61
Mountrail County





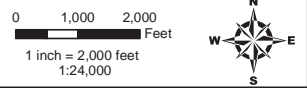
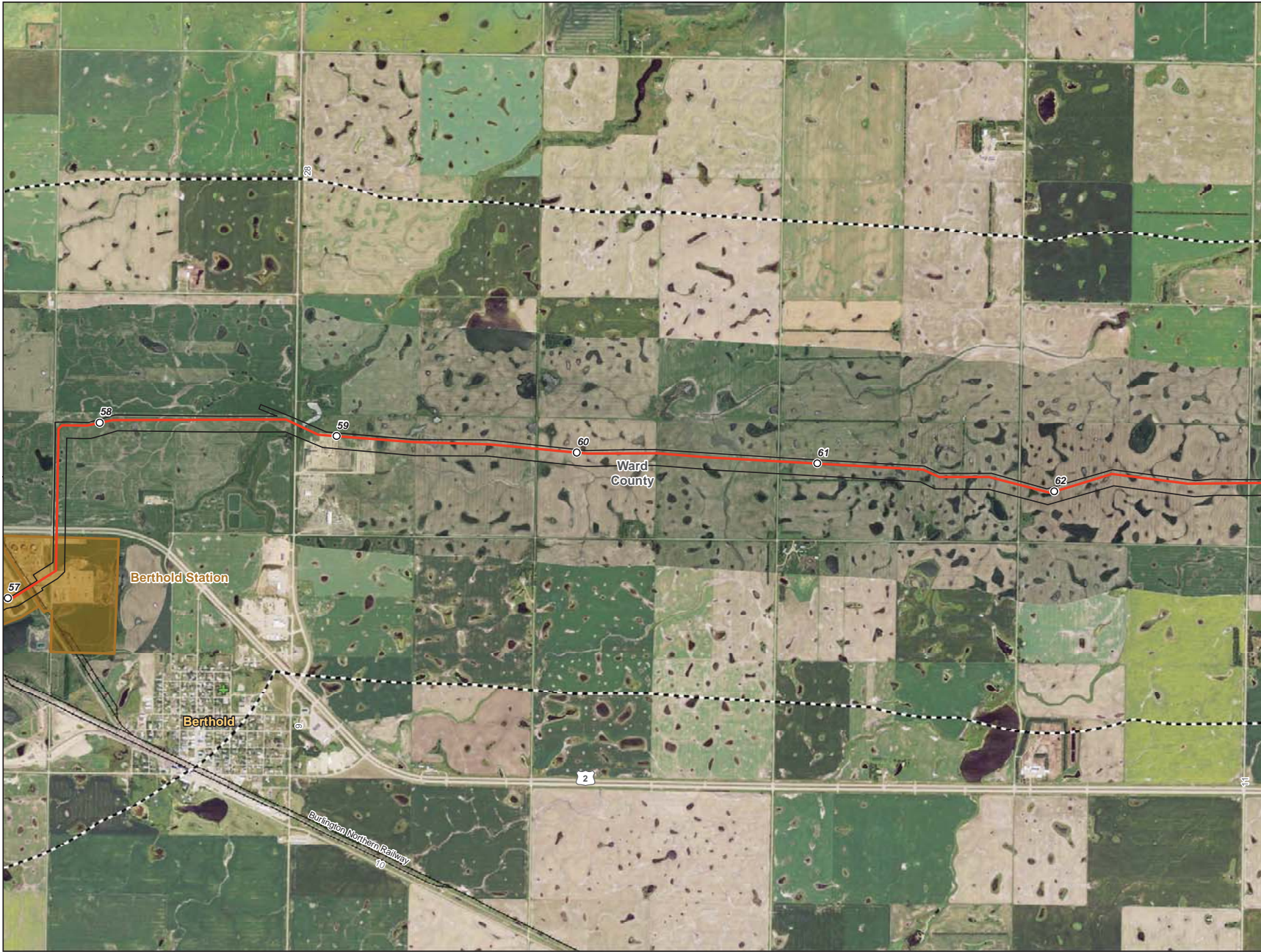
- Milepost
- Centerline
- ▭ Survey Corridor
- - - 2-mile Study Area
- ▭ Facility
- ▭ Previously Sited Facility
- ▭ County Boundary
- + Land and Water Conservation Fund Lands
- ▲ NRHP Historic Place
- ▭ USFWS-critical habitat

**Enbridge Pipelines
(North Dakota) LLC
Sandpiper Pipeline Project**

Exclusion Areas

Page 11 of 61
Ward County





- Milepost
- Centerline
- ▭ Survey Corridor
- - - 2-mile Study Area
- ▭ Facility
- ▭ Previously Sited Facility
- ▭ County Boundary
- ⊕ Land and Water Conservation Fund Lands
- ▲ NRHP Historic Place
- ▭ USFWS-critical habitat

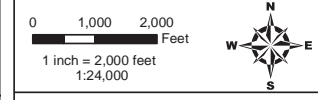
**Enbridge Pipelines
(North Dakota) LLC
Sandpiper Pipeline Project**

Exclusion Areas

Page 12 of 61
Ward County



Source: USGS, ESRI, and other sources. All rights reserved. © 2013 Enbridge Pipelines (North Dakota) LLC. All other marks are the property of their respective owners.



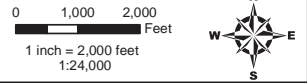
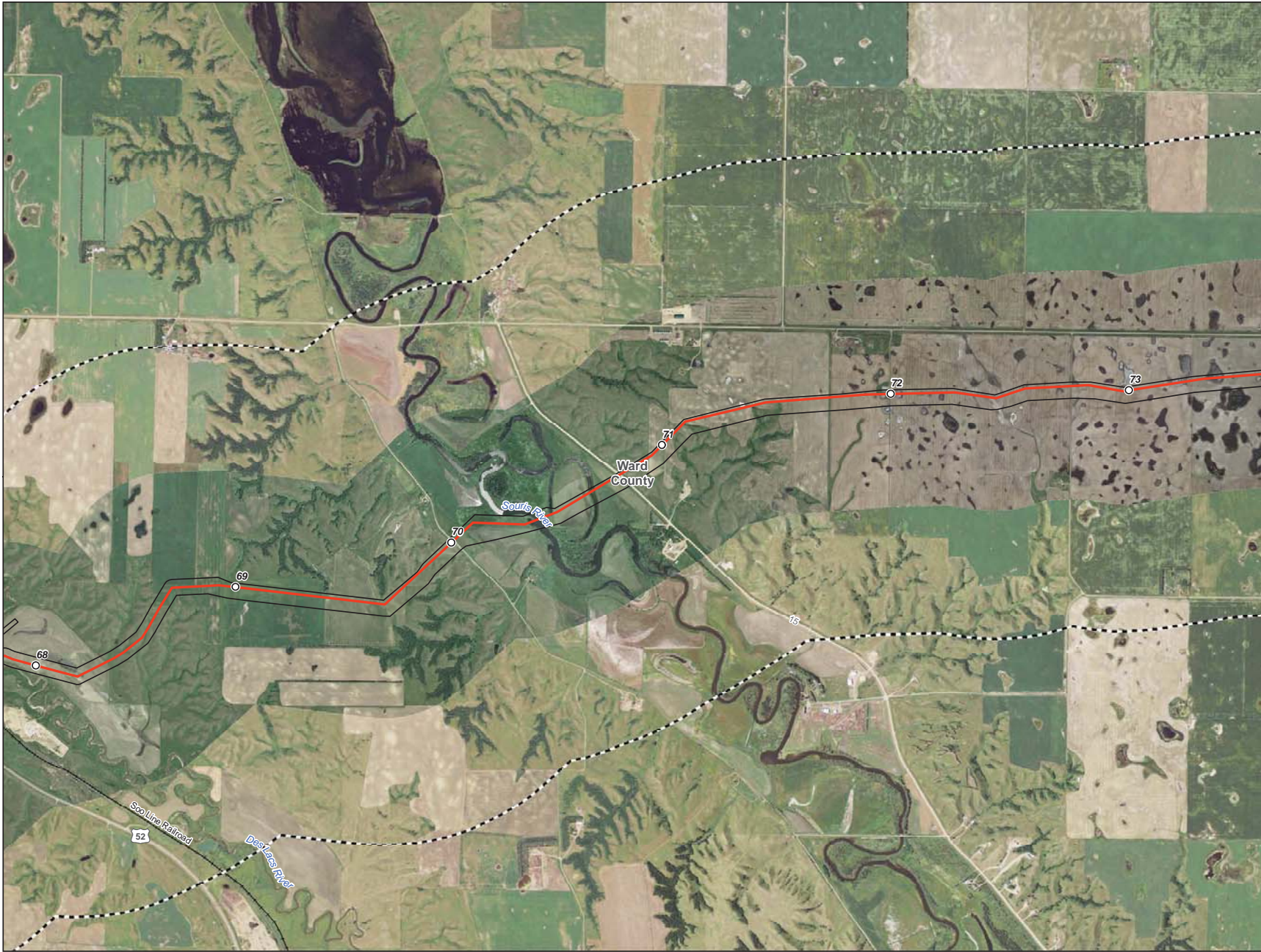
- Milepost
- Centerline
- ▭ Survey Corridor
- - - 2-mile Study Area
- ▭ Facility
- ▭ Previously Sited Facility
- ▭ County Boundary
- + Land and Water Conservation Fund Lands
- ▲ NRHP Historic Place
- USFWS-critical habitat

**Enbridge Pipelines
(North Dakota) LLC
Sandpiper Pipeline Project**

Exclusion Areas

Page 13 of 61
Ward County





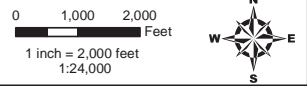
- Milepost
- Centerline
- ▭ Survey Corridor
- - - 2-mile Study Area
- ▭ Facility
- ▭ Previously Sited Facility
- ▭ County Boundary
- + Land and Water Conservation Fund Lands
- ▲ NRHP Historic Place
- ▭ USFWS-critical habitat

**Enbridge Pipelines
(North Dakota) LLC
Sandpiper Pipeline Project**

Exclusion Areas

Page 14 of 61
Ward County





- Milepost
- Centerline
- ▭ Survey Corridor
- - - 2-mile Study Area
- ▭ Facility
- ▭ Previously Sited Facility
- ▭ County Boundary
- + Land and Water Conservation Fund Lands
- ▲ NRHP Historic Place
- USFWS-critical habitat

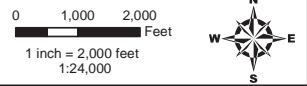
**Enbridge Pipelines
(North Dakota) LLC
Sandpiper Pipeline Project**

Exclusion Areas

Page 15 of 61
Ward County



Source: USGS, Esri, DigitalGlobe, GeoEye, Earthstar (United States), CNES/Airbus DS, USDA, AeroGRID, IGN, Esri, Swire



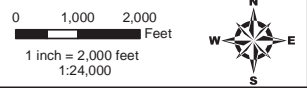
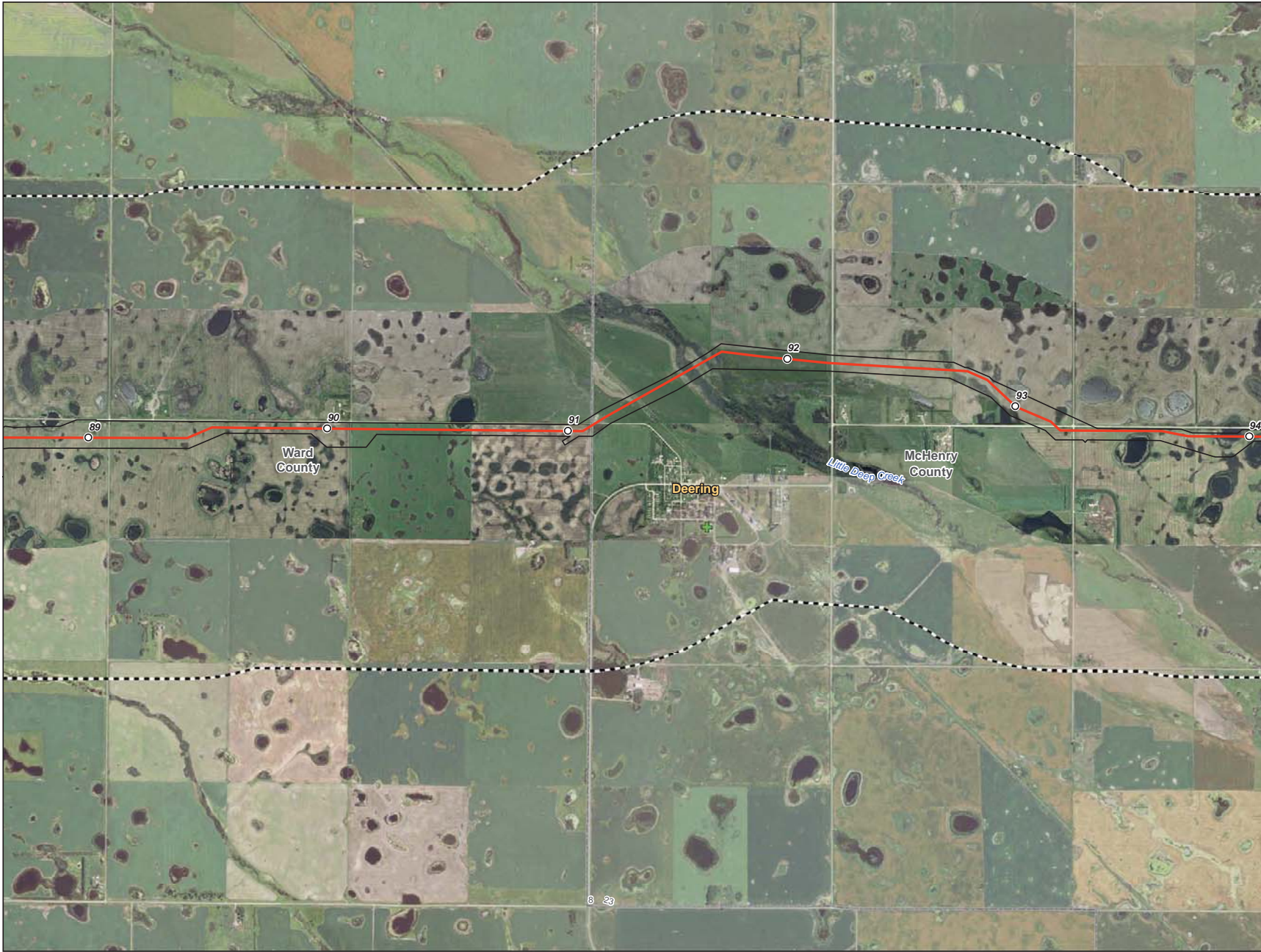
- Milepost
- Centerline
- ▭ Survey Corridor
- - - 2-mile Study Area
- ▭ Facility
- ▭ Previously Sited Facility
- ▭ County Boundary
- + Land and Water Conservation Fund Lands
- ▲ NRHP Historic Place
- ▭ USFWS-critical habitat

**Enbridge Pipelines
(North Dakota) LLC
Sandpiper Pipeline Project**

Exclusion Areas

Page 16 of 61
Ward County





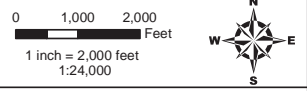
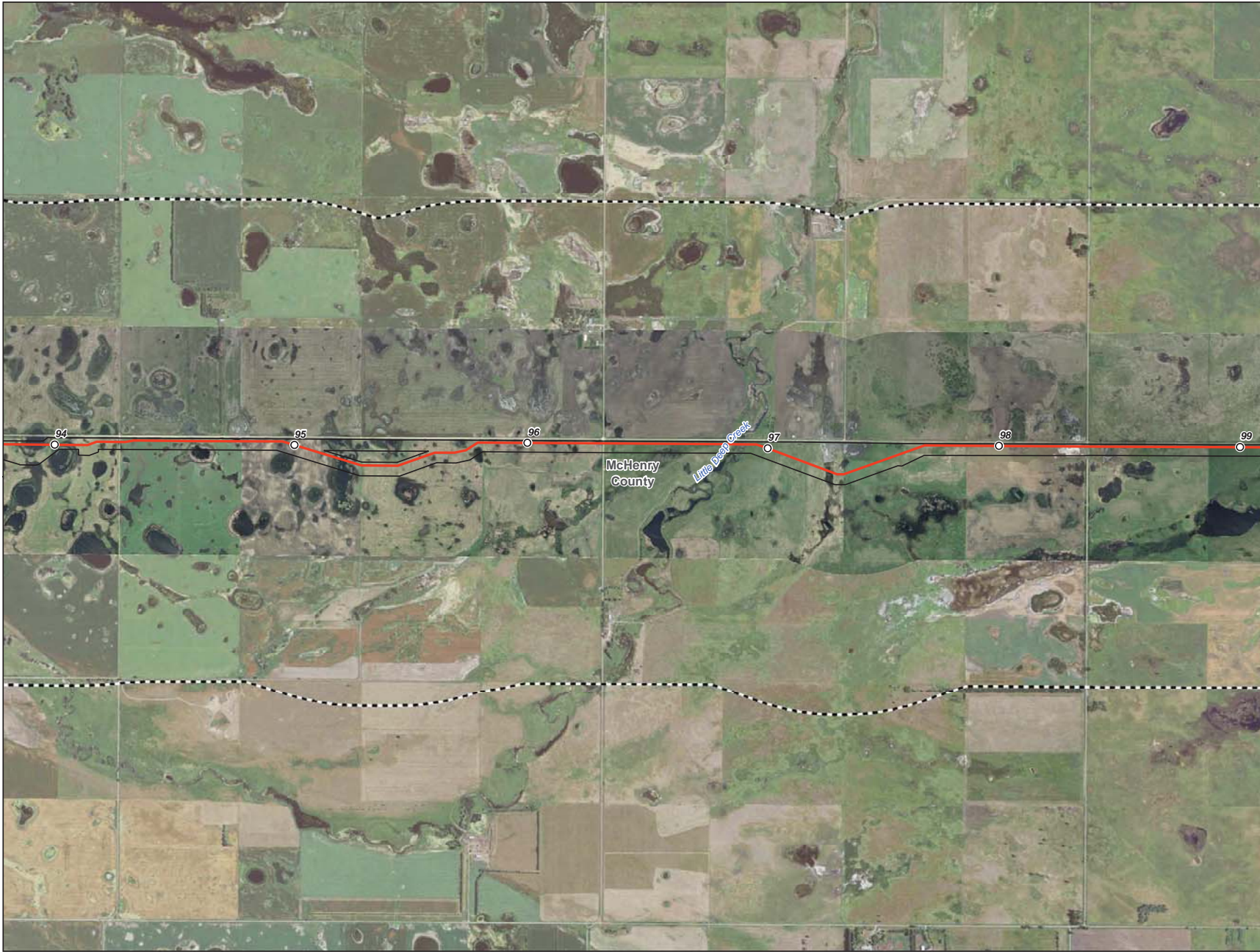
- Milepost
- Centerline
- ▭ Survey Corridor
- - - 2-mile Study Area
- ▭ Facility
- ▭ Previously Sited Facility
- ▭ County Boundary
- + Land and Water Conservation Fund Lands
- ▲ NRHP Historic Place
- ▭ USFWS-critical habitat

**Enbridge Pipelines
(North Dakota) LLC
Sandpiper Pipeline Project**

Exclusion Areas

Page 18 of 61
Ward County





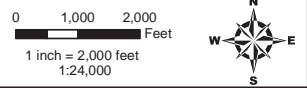
- Milepost
- Centerline
- Survey Corridor
- ⋯ 2-mile Study Area
- Facility
- Previously Sited Facility
- County Boundary
- ⊕ Land and Water Conservation Fund Lands
- ▲ NRHP Historic Place
- USFWS-critical habitat

**Enbridge Pipelines
(North Dakota) LLC
Sandpiper Pipeline Project**

Exclusion Areas

Page 19 of 61
McHenry County





- Milepost
- Centerline
- ▭ Survey Corridor
- - - 2-mile Study Area
- ▭ Facility
- ▭ Previously Sited Facility
- ▭ County Boundary
- ✚ Land and Water Conservation Fund Lands
- ▲ NRHP Historic Place
- ▭ USFWS-critical habitat

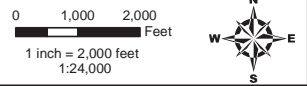
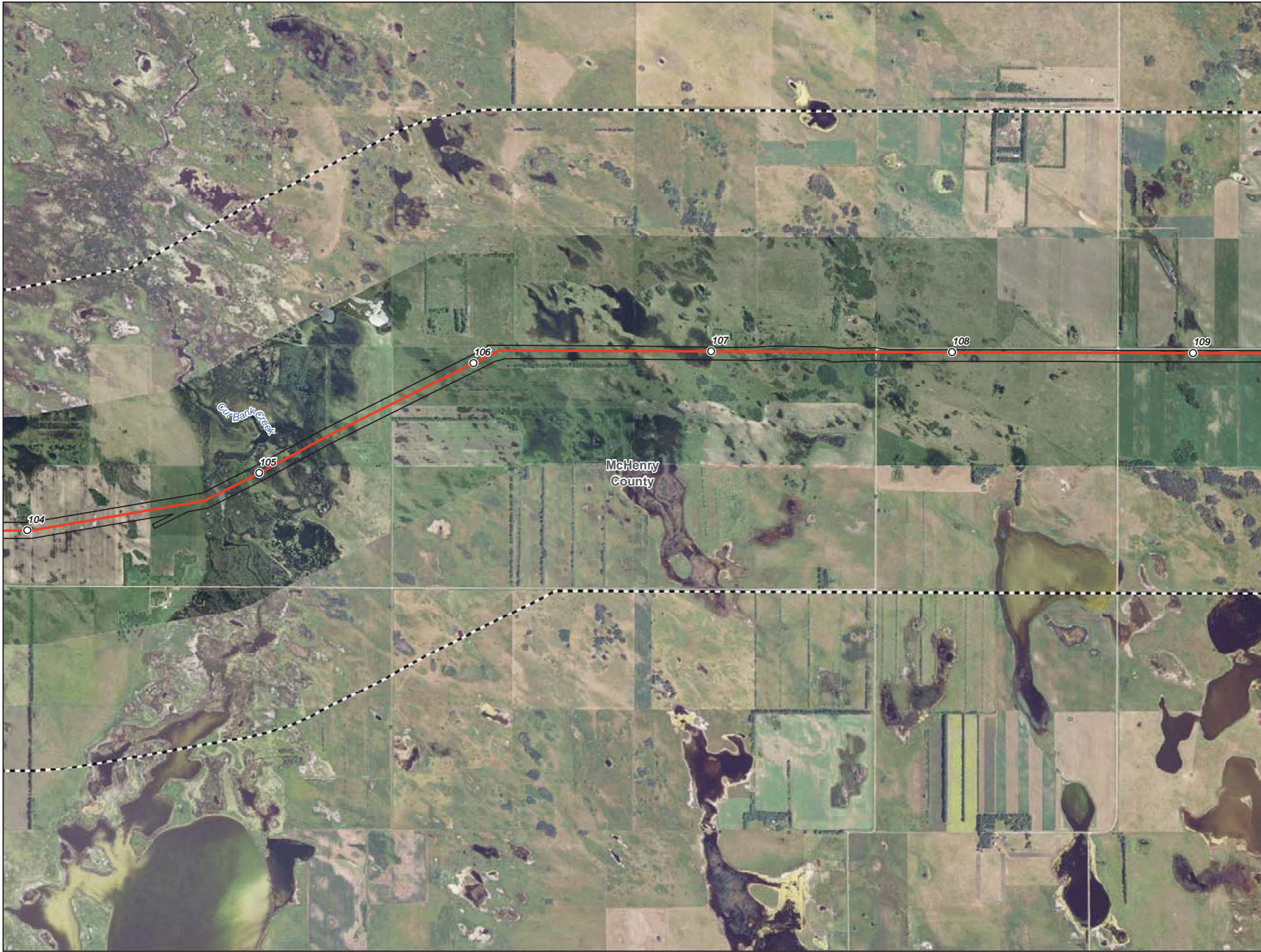
**Enbridge Pipelines
(North Dakota) LLC
Sandpiper Pipeline Project**

Exclusion Areas

Page 20 of 61
McHenry County



Source: USGS, ESRI, and other sources. All rights reserved. © 2013 Enbridge Pipelines (North Dakota) LLC. All other marks are the property of their respective owners.



- Milepost
- Centerline
- ▭ Survey Corridor
- - - 2-mile Study Area
- ▭ Facility
- ▭ Previously Sited Facility
- ▭ County Boundary
- + Land and Water Conservation Fund Lands
- ▲ NRHP Historic Place
- USFWS-critical habitat

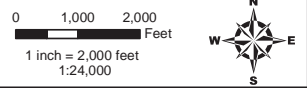
**Enbridge Pipelines
(North Dakota) LLC
Sandpiper Pipeline Project**

Exclusion Areas

Page 21 of 61
McHenry County



Source: USGS, ESRI, and other sources. All rights reserved. © 2013 Enbridge Pipelines (North Dakota) LLC. All rights reserved.



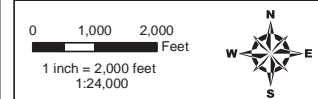
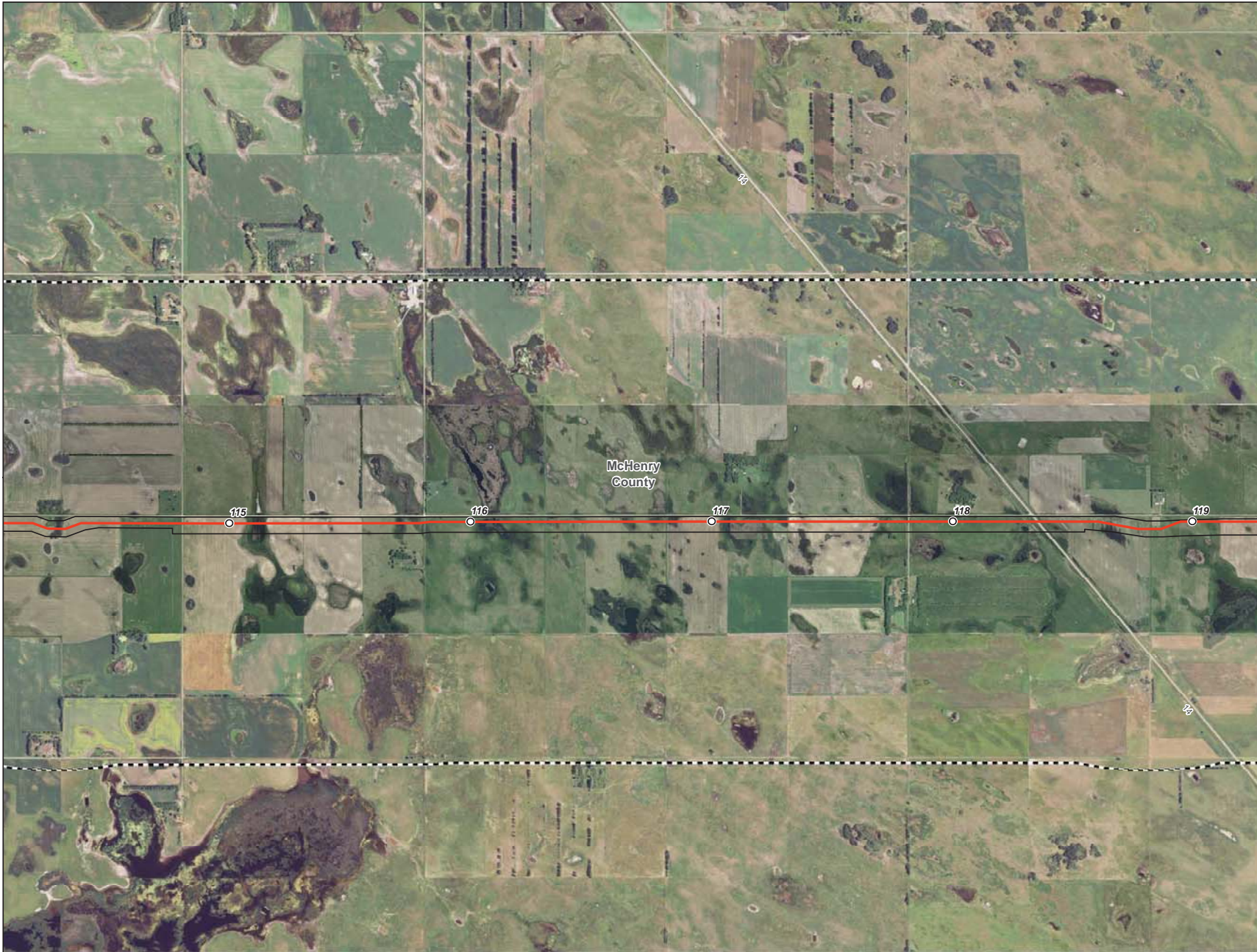
- Milepost
- Centerline
- ▭ Survey Corridor
- - - 2-mile Study Area
- ▭ Facility
- ▭ Previously Sited Facility
- ▭ County Boundary
- + Land and Water Conservation Fund Lands
- ▲ NRHP Historic Place
- ▭ USFWS-critical habitat

**Enbridge Pipelines
(North Dakota) LLC
Sandpiper Pipeline Project**

Exclusion Areas

Page 22 of 61
McHenry County






- Milepost
- Centerline
- ▭ Survey Corridor
- - - 2-mile Study Area
- ▭ Facility
- ▭ Previously Sited Facility
- ▭ County Boundary
- + Land and Water Conservation Fund Lands
- ▲ NRHP Historic Place
- ▭ USFWS-critical habitat

**Enbridge Pipelines
(North Dakota) LLC
Sandpiper Pipeline Project**

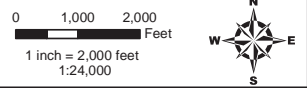
Exclusion Areas

Page 23 of 61
McHenry County

 **ENBRIDGE**

Rev. D 12/16/2013

Source: USGS, ESRI, and other sources. All rights reserved. © 2013 Enbridge Pipelines (North Dakota) LLC. All other marks are the property of their respective owners.



- Milepost
- Centerline
- ▭ Survey Corridor
- - - 2-mile Study Area
- ▭ Facility
- ▭ Previously Sited Facility
- ▭ County Boundary
- + Land and Water Conservation Fund Lands
- ▲ NRHP Historic Place
- ▭ USFWS-critical habitat

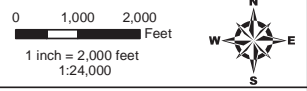
**Enbridge Pipelines
(North Dakota) LLC
Sandpiper Pipeline Project**

Exclusion Areas

Page 24 of 61
McHenry County



Source: USGS, ESRI, and other sources. All rights reserved. © 2013 Enbridge Pipelines (North Dakota) LLC. All other marks are the property of their respective owners.



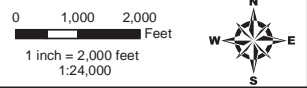
- Milepost
- Centerline
- ▭ Survey Corridor
- - - 2-mile Study Area
- ▭ Facility
- ▭ Previously Sited Facility
- ▭ County Boundary
- + Land and Water Conservation Fund Lands
- ▲ NRHP Historic Place
- USFWS-critical habitat

**Enbridge Pipelines
(North Dakota) LLC
Sandpiper Pipeline Project**

Exclusion Areas

Page 25 of 61
McHenry County





- Milepost
- Centerline
- ▭ Survey Corridor
- - - 2-mile Study Area
- ▭ Facility
- ▭ Previously Sited Facility
- ▭ County Boundary
- + Land and Water Conservation Fund Lands
- ▲ NRHP Historic Place
- ▭ USFWS-critical habitat

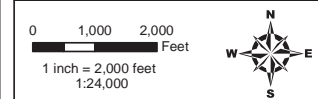
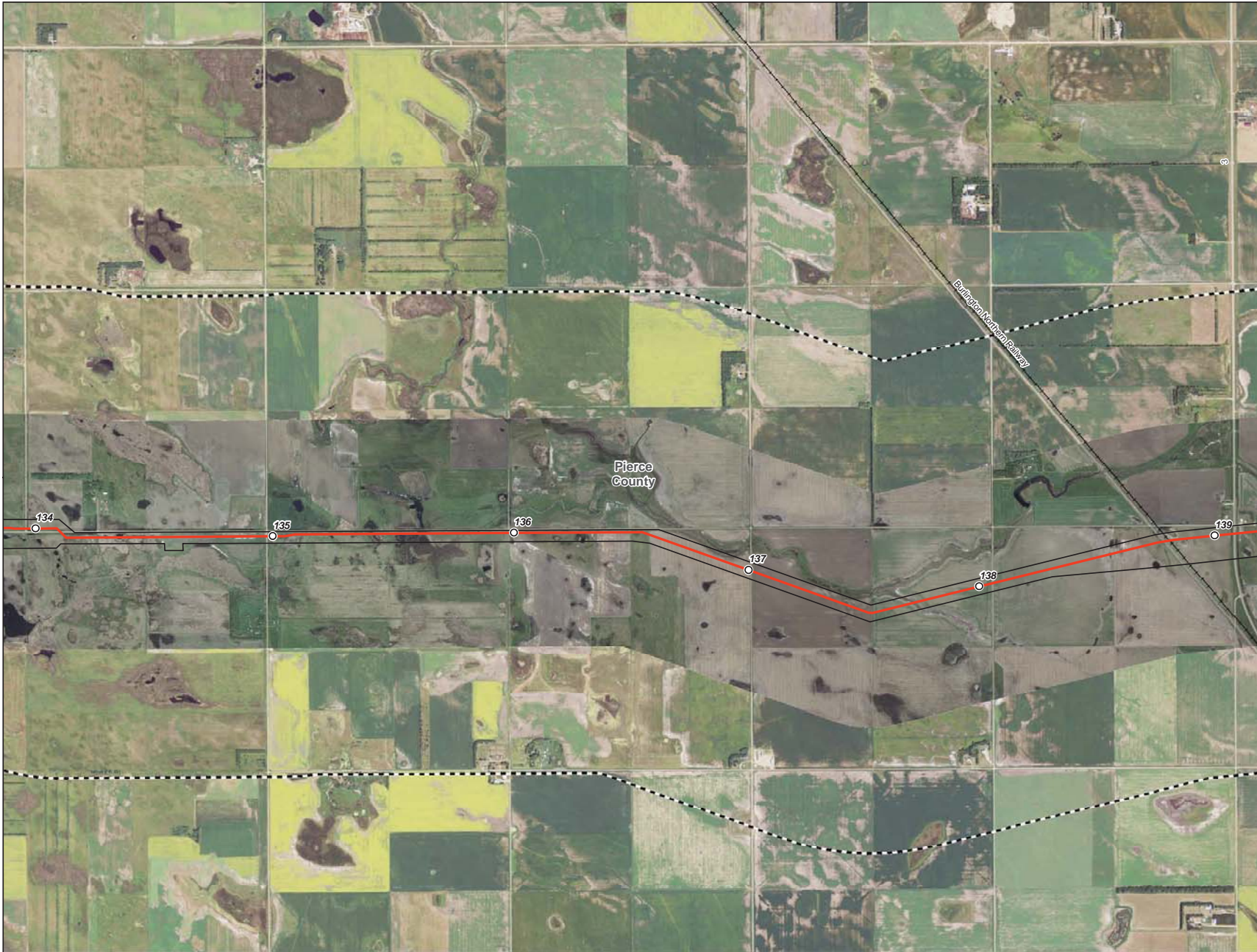
**Enbridge Pipelines
(North Dakota) LLC
Sandpiper Pipeline Project**

Exclusion Areas

Page 26 of 61
Pierce County



Source: USGS, ESRI, and other sources. All rights reserved. © 2013 Enbridge Pipelines (North Dakota) LLC. All other marks are the property of their respective owners.



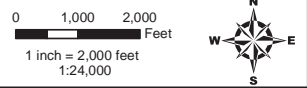
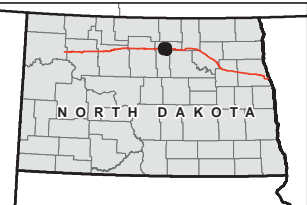
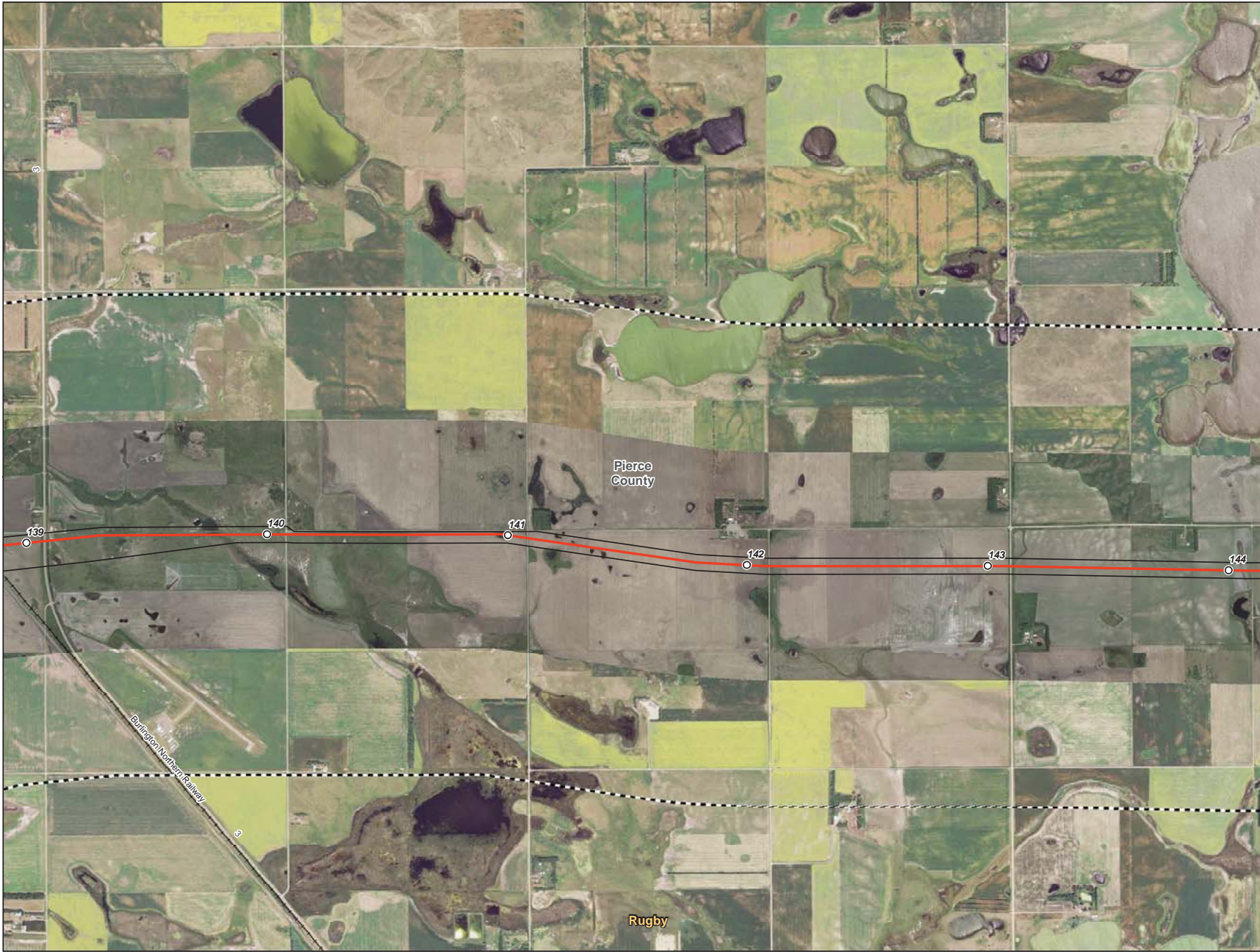
- Milepost
- Centerline
- ▭ Survey Corridor
- - - 2-mile Study Area
- ▭ Facility
- ▭ Previously Sited Facility
- ▭ County Boundary
- + Land and Water Conservation Fund Lands
- ▲ NRHP Historic Place
- USFWS-critical habitat











**Enbridge Pipelines
(North Dakota) LLC
Sandpiper Pipeline Project**

Exclusion Areas

Page 27 of 61
Pierce County





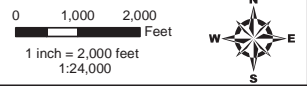
-  Milepost
-  Centerline
-  Survey Corridor
-  2-mile Study Area
-  Facility
-  Previously Sited Facility
-  County Boundary
-  Land and Water Conservation Fund Lands
-  NRHP Historic Place
-  USFWS-critical habitat

**Enbridge Pipelines
(North Dakota) LLC
Sandpiper Pipeline Project**

Exclusion Areas

Page 28 of 61
Pierce County





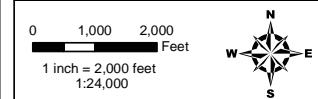
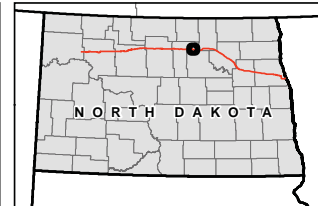
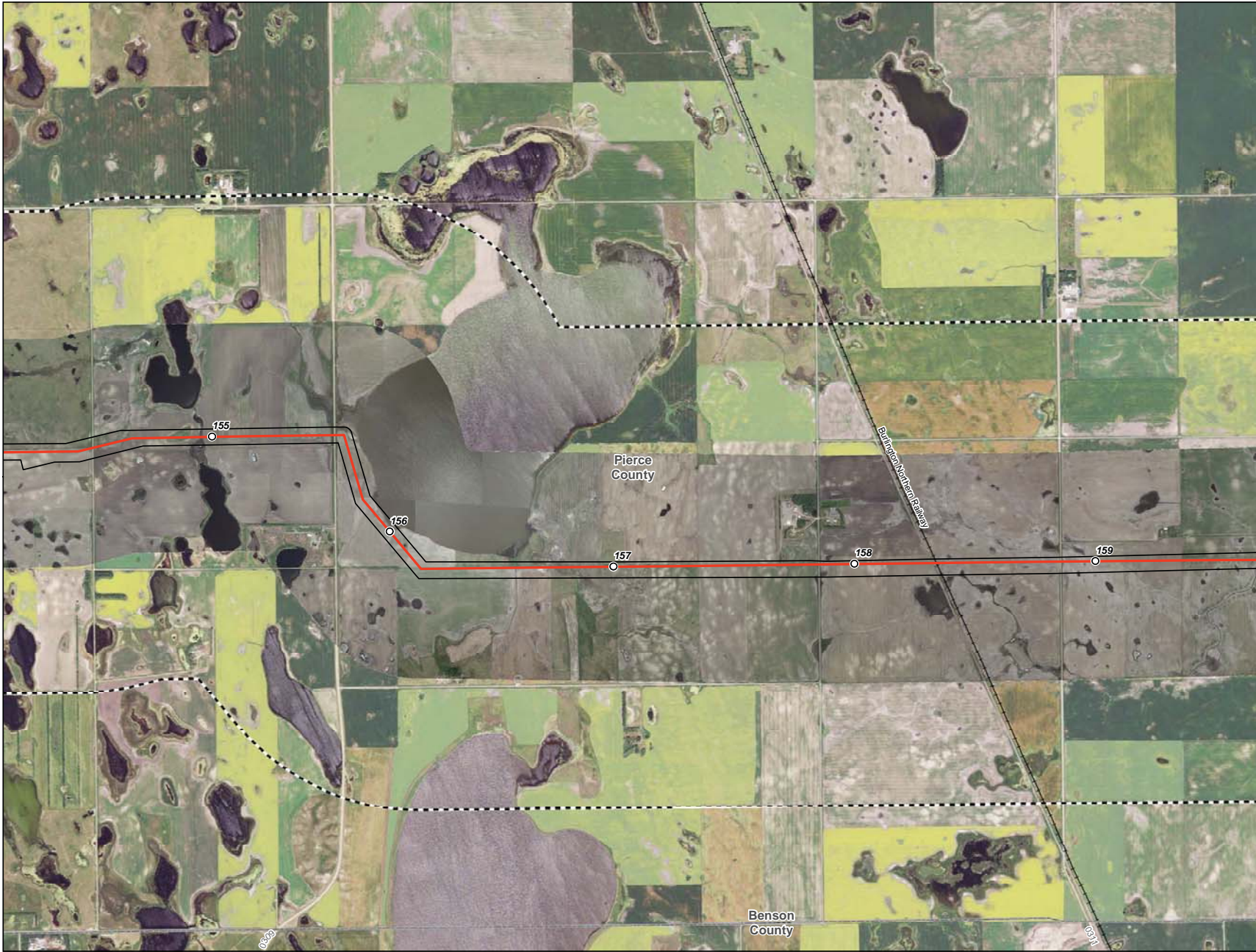
- Milepost
- Centerline
- ▭ Survey Corridor
- - - 2-mile Study Area
- ▭ Facility
- ▭ Previously Sited Facility
- ▭ County Boundary
- + Land and Water Conservation Fund Lands
- ▲ NRHP Historic Place
- ▭ USFWS-critical habitat

**Enbridge Pipelines
(North Dakota) LLC
Sandpiper Pipeline Project**

Exclusion Areas

Page 29 of 61
Pierce County





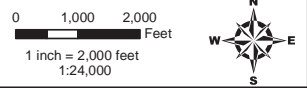
- Milepost
- Centerline
- ▭ Survey Corridor
- - - 2-mile Study Area
- ▭ Facility
- ▭ Previously Sited Facility
- ▭ County Boundary
- + Land and Water Conservation Fund Lands
- ▲ NRHP Historic Place
- ▭ USFWS-critical habitat

**Enbridge Pipelines
(North Dakota) LLC
Sandpiper Pipeline Project**

Exclusion Areas

Page 31 of 61
Pierce County





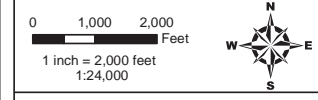
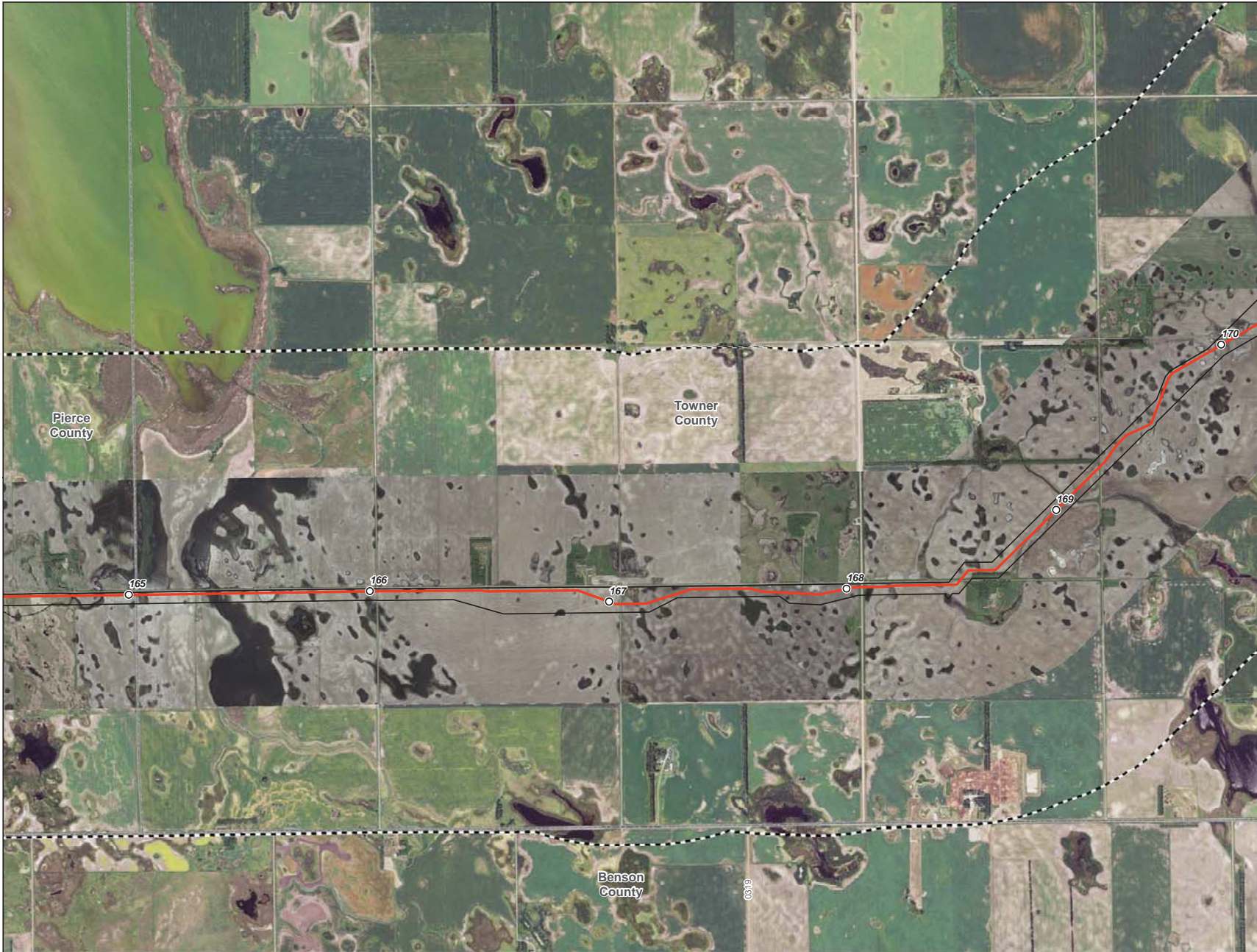
- Milepost
- Centerline
- ▭ Survey Corridor
- - - 2-mile Study Area
- ▭ Facility
- ▭ Previously Sited Facility
- ▭ County Boundary
- + Land and Water Conservation Fund Lands
- ▲ NRHP Historic Place
- ▭ USFWS-critical habitat

**Enbridge Pipelines
(North Dakota) LLC
Sandpiper Pipeline Project**

Exclusion Areas

Page 32 of 61
Pierce County





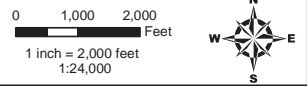
- Milepost
- Centerline
- ▭ Survey Corridor
- - - 2-mile Study Area
- ▭ Facility
- ▭ Previously Sited Facility
- ▭ County Boundary
- + Land and Water Conservation Fund Lands
- ▲ NRHP Historic Place
- ▭ USFWS-critical habitat

**Enbridge Pipelines
(North Dakota) LLC
Sandpiper Pipeline Project**

Exclusion Areas

Page 33 of 61
Pierce County





- Milepost
- Centerline
- ▭ Survey Corridor
- - - 2-mile Study Area
- ▭ Facility
- ▭ Previously Sited Facility
- ▭ County Boundary
- + Land and Water Conservation Fund Lands
- ▲ NRHP Historic Place
- ▭ USFWS-critical habitat

**Enbridge Pipelines
(North Dakota) LLC
Sandpiper Pipeline Project**

Exclusion Areas

Page 34 of 61
Towner County



Source: USGS, ESRI, and other sources. All rights reserved. © 2013 Enbridge Pipelines (North Dakota) LLC. All other marks are the property of their respective owners.



- Milepost
- Centerline
- ▭ Survey Corridor
- - - 2-mile Study Area
- ▭ Facility
- ▭ Previously Sited Facility
- ▭ County Boundary
- + Land and Water Conservation Fund Lands
- ▲ NRHP Historic Place
- ▭ USFWS-critical habitat

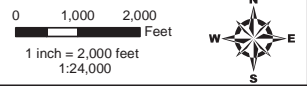
**Enbridge Pipelines
(North Dakota) LLC
Sandpiper Pipeline Project**

Exclusion Areas

Page 35 of 61
Towner County



Source: USGS, ESRI, and other sources. All rights reserved. © 2013 Enbridge Pipelines (North Dakota) LLC. All rights reserved.



- Milepost
- Centerline
- ▭ Survey Corridor
- - - 2-mile Study Area
- ▭ Facility
- ▭ Previously Sited Facility
- ▭ County Boundary
- ✚ Land and Water Conservation Fund Lands
- ▲ NRHP Historic Place
- ▭ USFWS-critical habitat

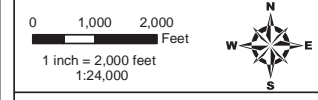
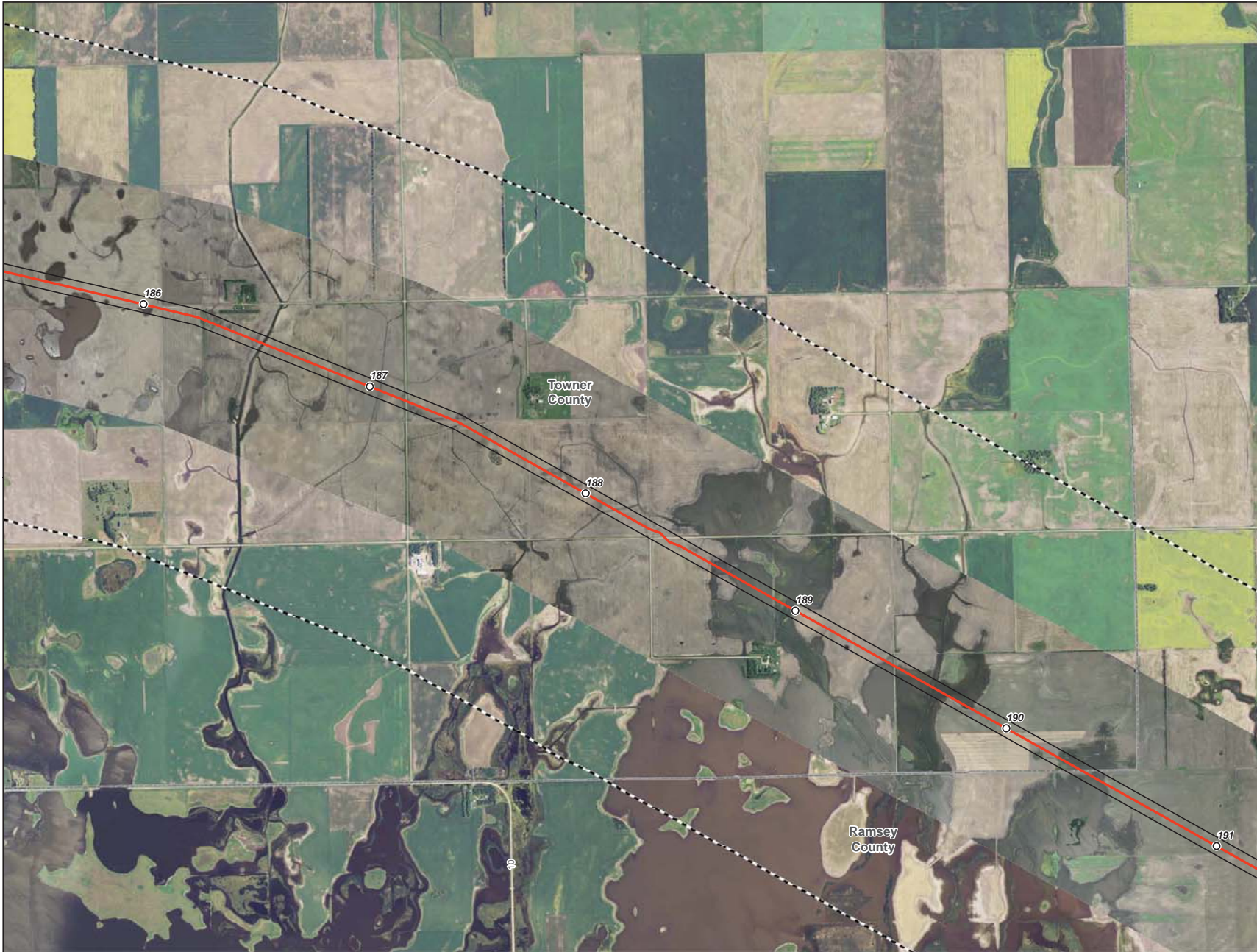
**Enbridge Pipelines
(North Dakota) LLC
Sandpiper Pipeline Project**

Exclusion Areas

Page 36 of 61
Towner County



SOURCE: U.S. GEOLOGICAL SURVEY; STATE OF NORTH DAKOTA; ENBRIDGE PIPELINES (NORTH DAKOTA) LLC; TOWNER COUNTY; SANDPIPER PIPELINE PROJECT



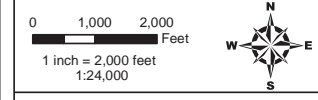
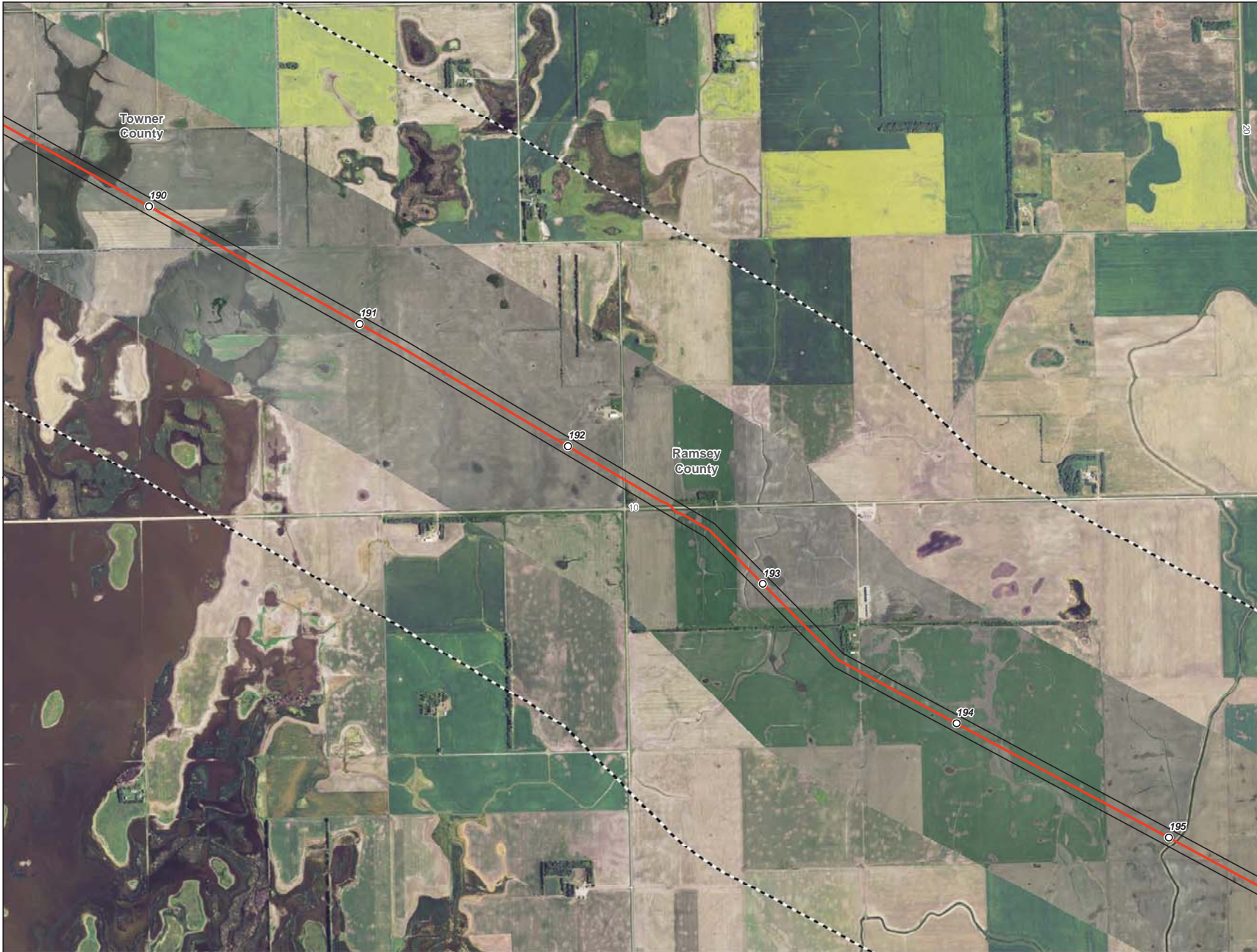
- Milepost
- Centerline
- ▭ Survey Corridor
- - - 2-mile Study Area
- ▭ Facility
- ▭ Previously Sited Facility
- ▭ County Boundary
- ⊕ Land and Water Conservation Fund Lands
- ▲ NRHP Historic Place
- USFWS-critical habitat

**Enbridge Pipelines
(North Dakota) LLC
Sandpiper Pipeline Project**

Exclusion Areas

Page 37 of 61
Towner County





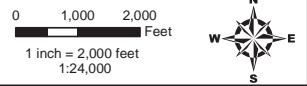
- Milepost
- Centerline
- ▭ Survey Corridor
- - - 2-mile Study Area
- ▭ Facility
- ▭ Previously Sited Facility
- ▭ County Boundary
- + Land and Water Conservation Fund Lands
- ▲ NRHP Historic Place
- USFWS-critical habitat

**Enbridge Pipelines
(North Dakota) LLC
Sandpiper Pipeline Project**

Exclusion Areas

Page 38 of 61
Ramsey County





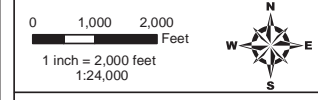
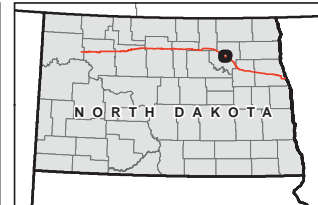
- Milepost
- Centerline
- ▭ Survey Corridor
- - - 2-mile Study Area
- ▭ Facility
- ▭ Previously Sited Facility
- ▭ County Boundary
- + Land and Water Conservation Fund Lands
- ▲ NRHP Historic Place
- USFWS-critical habitat

**Enbridge Pipelines
(North Dakota) LLC
Sandpiper Pipeline Project**

Exclusion Areas

Page 39 of 61
Ramsey County





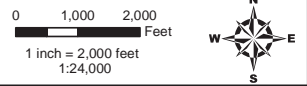
- Milepost
- Centerline
- Survey Corridor
- 2-mile Study Area
- Facility
- Previously Sited Facility
- County Boundary
- Land and Water Conservation Fund Lands
- NRHP Historic Place
- USFWS-critical habitat

**Enbridge Pipelines
(North Dakota) LLC
Sandpiper Pipeline Project**

Exclusion Areas

Page 41 of 61
Ramsey County





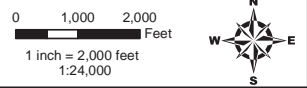
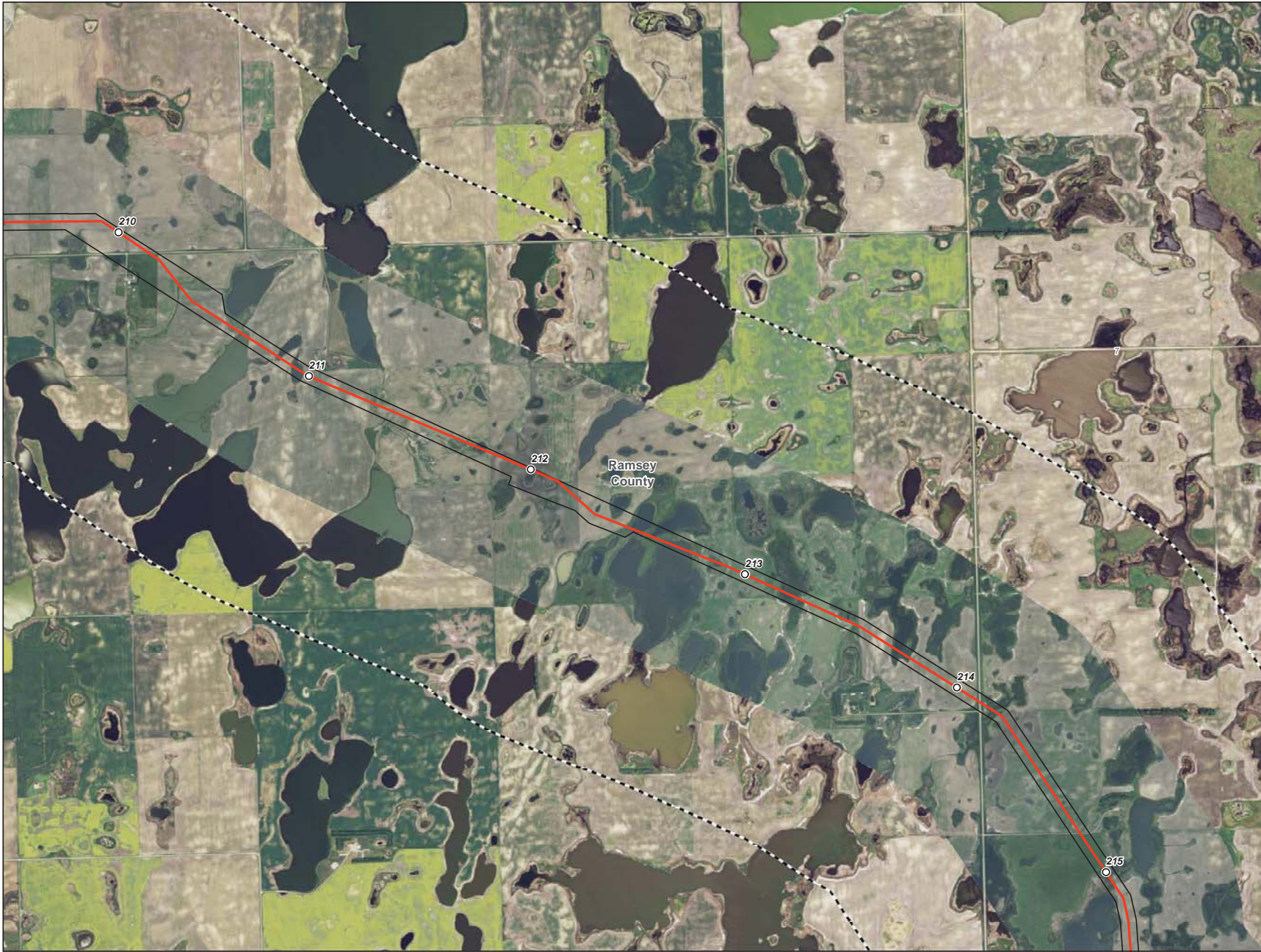
- Milepost
- Centerline
- ▭ Survey Corridor
- - - 2-mile Study Area
- ▭ Facility
- ▭ Previously Sited Facility
- ▭ County Boundary
- + Land and Water Conservation Fund Lands
- ▲ NRHP Historic Place
- ▭ USFWS-critical habitat

**Enbridge Pipelines
(North Dakota) LLC
Sandpiper Pipeline Project**

Exclusion Areas

Page 42 of 61
Ramsey County





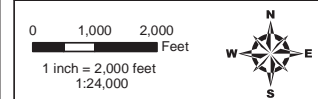
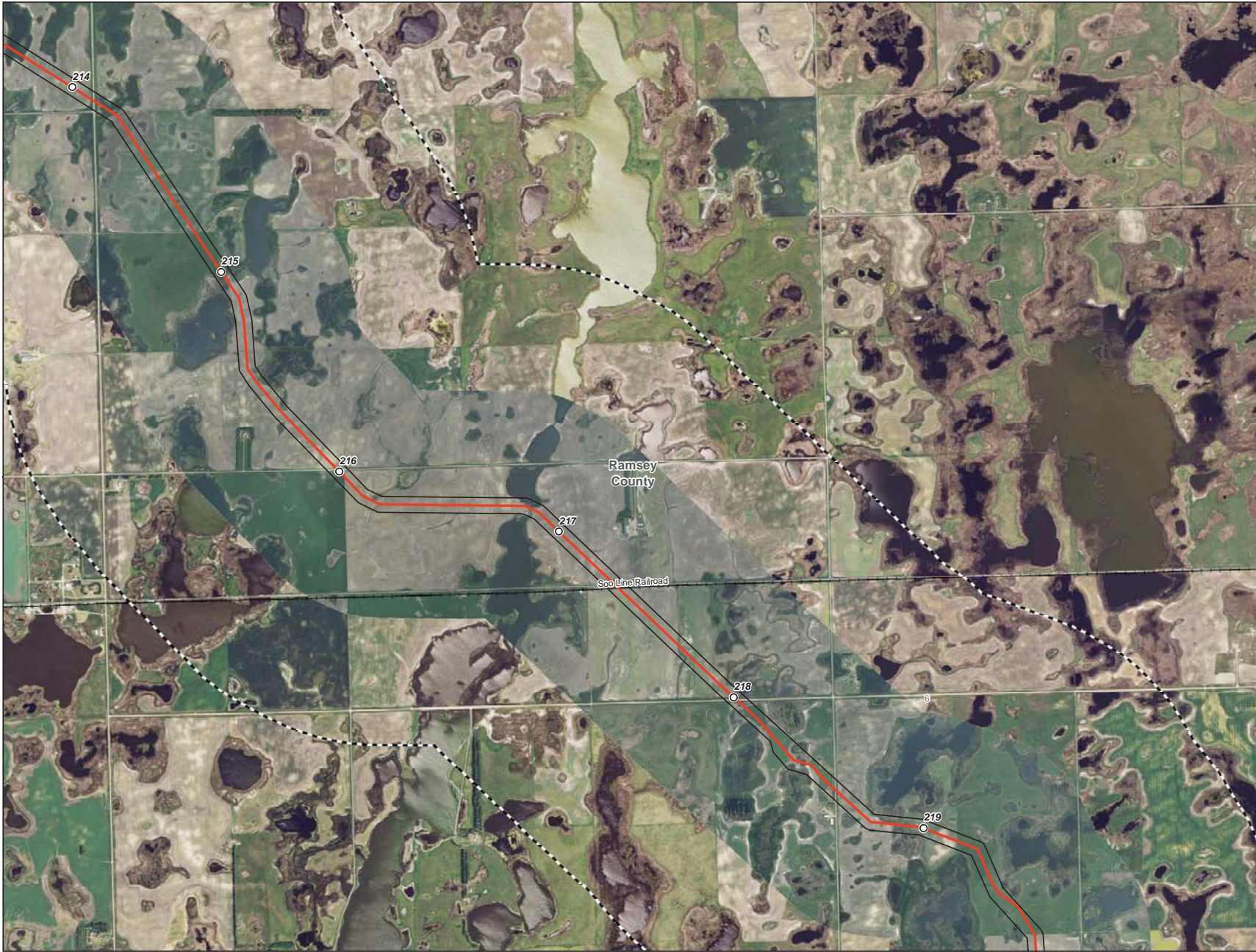
- Milepost
- Centerline
- ▭ Survey Corridor
- - - 2-mile Study Area
- ▭ Facility
- ▭ Previously Sited Facility
- ▭ County Boundary
- + Land and Water Conservation Fund Lands
- ▲ NRHP Historic Place
- ▭ USFWS-critical habitat

**Enbridge Pipelines
(North Dakota) LLC
Sandpiper Pipeline Project**

Exclusion Areas

Page 43 of 61
Ramsey County





- Milepost
- Centerline
- ▭ Survey Corridor
- - - 2-mile Study Area
- ▭ Facility
- ▭ Previously Sited Facility
- ▭ County Boundary
- + Land and Water Conservation Fund Lands
- ▲ NRHP Historic Place
- ▭ USFWS-critical habitat

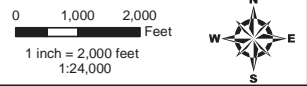
**Enbridge Pipelines
(North Dakota) LLC
Sandpiper Pipeline Project**

Exclusion Areas

Page 44 of 61
Ramsey County

ENBRIDGE

Rev. D 12/16/2013



- Milepost
- Centerline
- ▭ Survey Corridor
- - - 2-mile Study Area
- ▭ Facility
- ▭ Previously Sited Facility
- ▭ County Boundary
- ⊕ Land and Water Conservation Fund Lands
- ▲ NRHP Historic Place
- ▭ USFWS-critical habitat

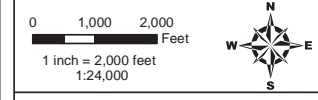
**Enbridge Pipelines
(North Dakota) LLC
Sandpiper Pipeline Project**

Exclusion Areas

Page 45 of 61
Ramsey County



SOURCE: USGS/USFWS/ENBRIDGE



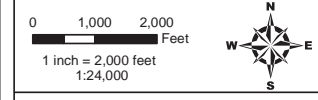
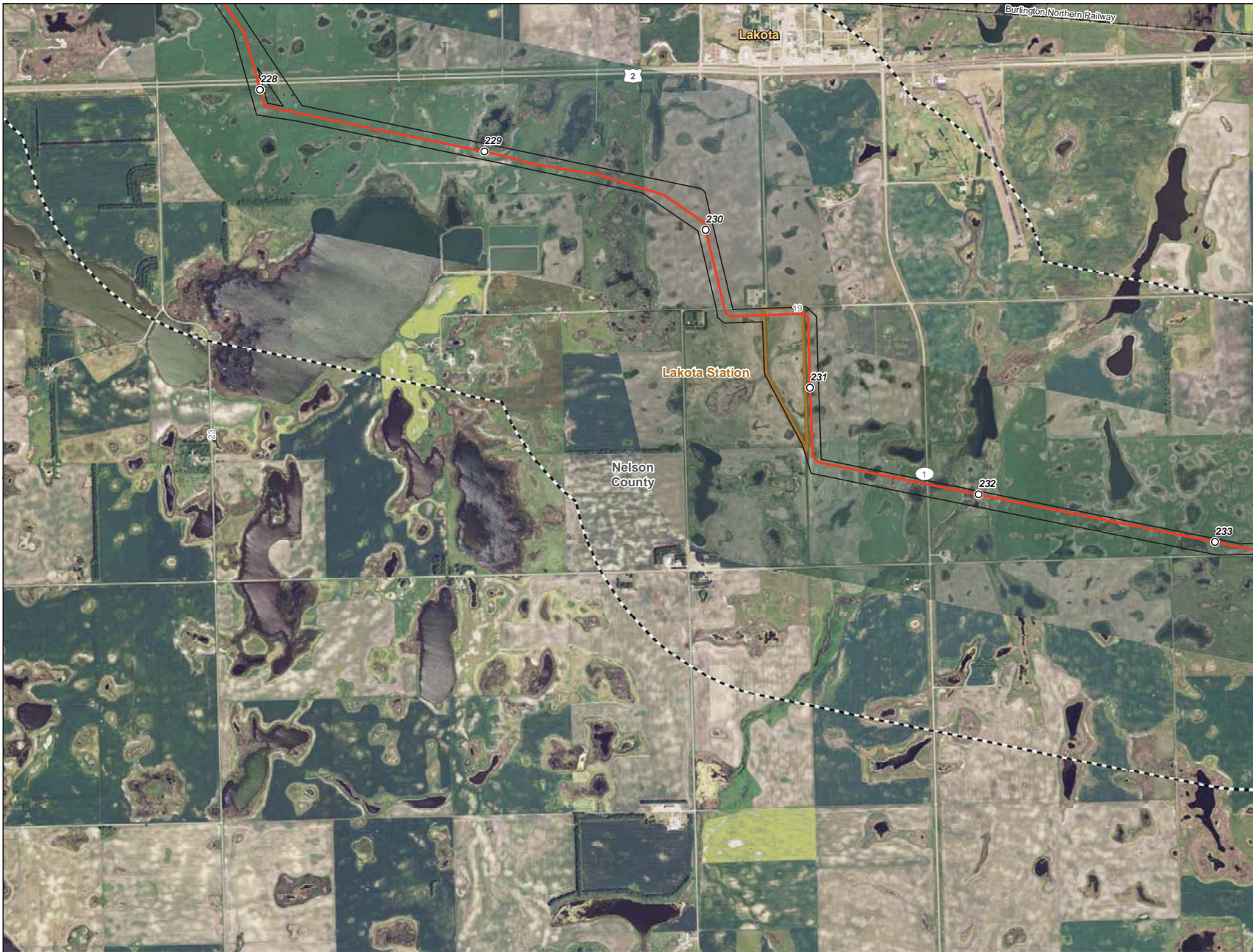
- Milepost
- Centerline
- ▭ Survey Corridor
- - - 2-mile Study Area
- ▭ Facility
- ▭ Previously Sited Facility
- ▭ County Boundary
- + Land and Water Conservation Fund Lands
- ▲ NRHP Historic Place
- USFWS-critical habitat

**Enbridge Pipelines
(North Dakota) LLC
Sandpiper Pipeline Project**

Exclusion Areas

Page 46 of 61
Ramsey County





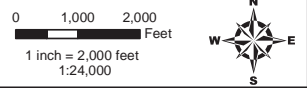
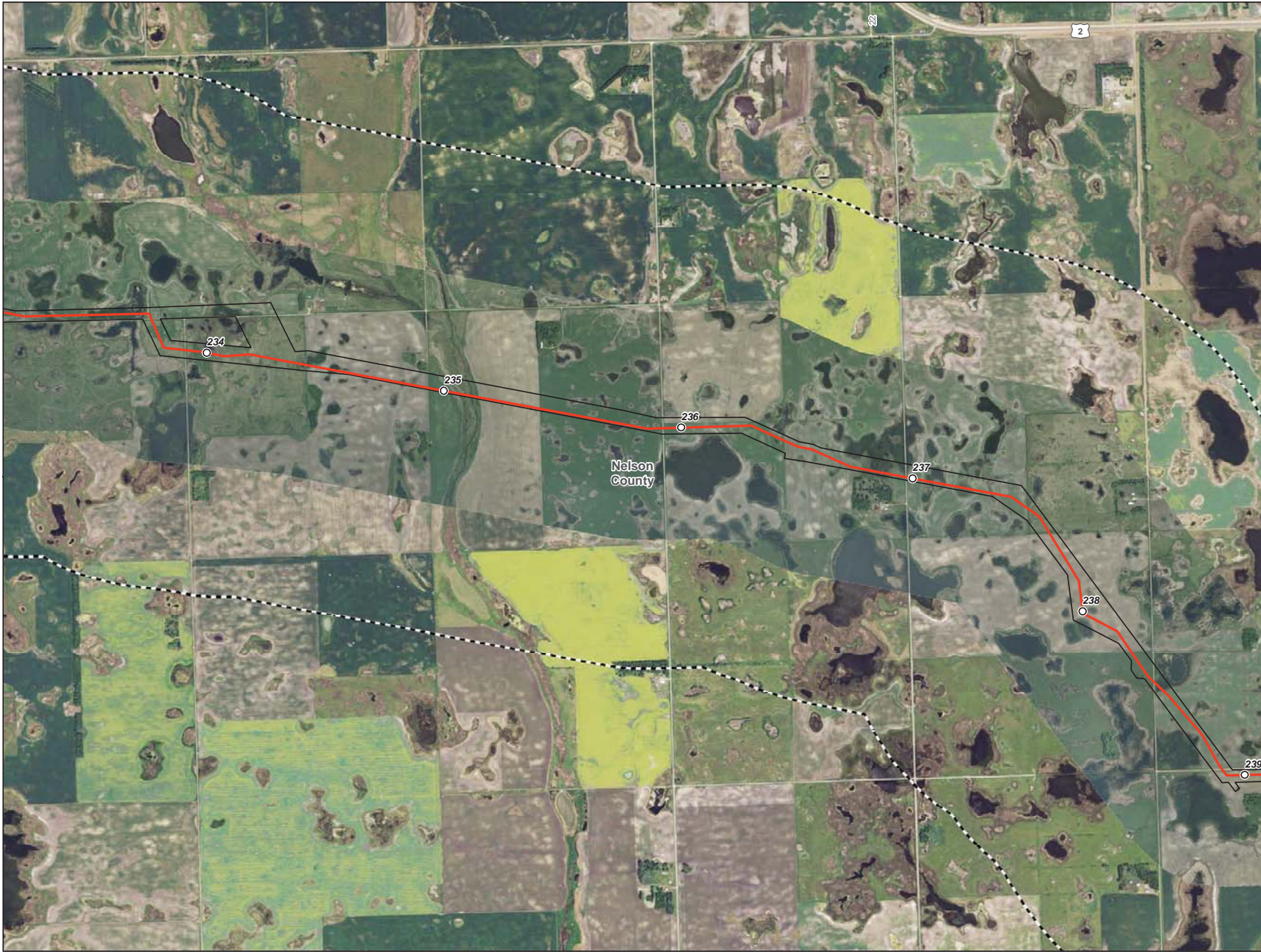
- Milepost
- Centerline
- ▭ Survey Corridor
- - - 2-mile Study Area
- ▭ Facility
- ▭ Previously Sited Facility
- ▭ County Boundary
- + Land and Water Conservation Fund Lands
- ▲ NRHP Historic Place
- ▭ USFWS-critical habitat

**Enbridge Pipelines
(North Dakota) LLC
Sandpiper Pipeline Project**

Exclusion Areas

Page 47 of 61
Nelson County





- Milepost
- Centerline
- ▭ Survey Corridor
- - - 2-mile Study Area
- ▭ Facility
- ▭ Previously Sited Facility
- ▭ County Boundary
- ✚ Land and Water Conservation Fund Lands
- ▲ NRHP Historic Place
- ▭ USFWS-critical habitat

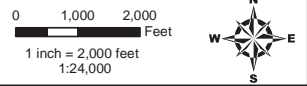
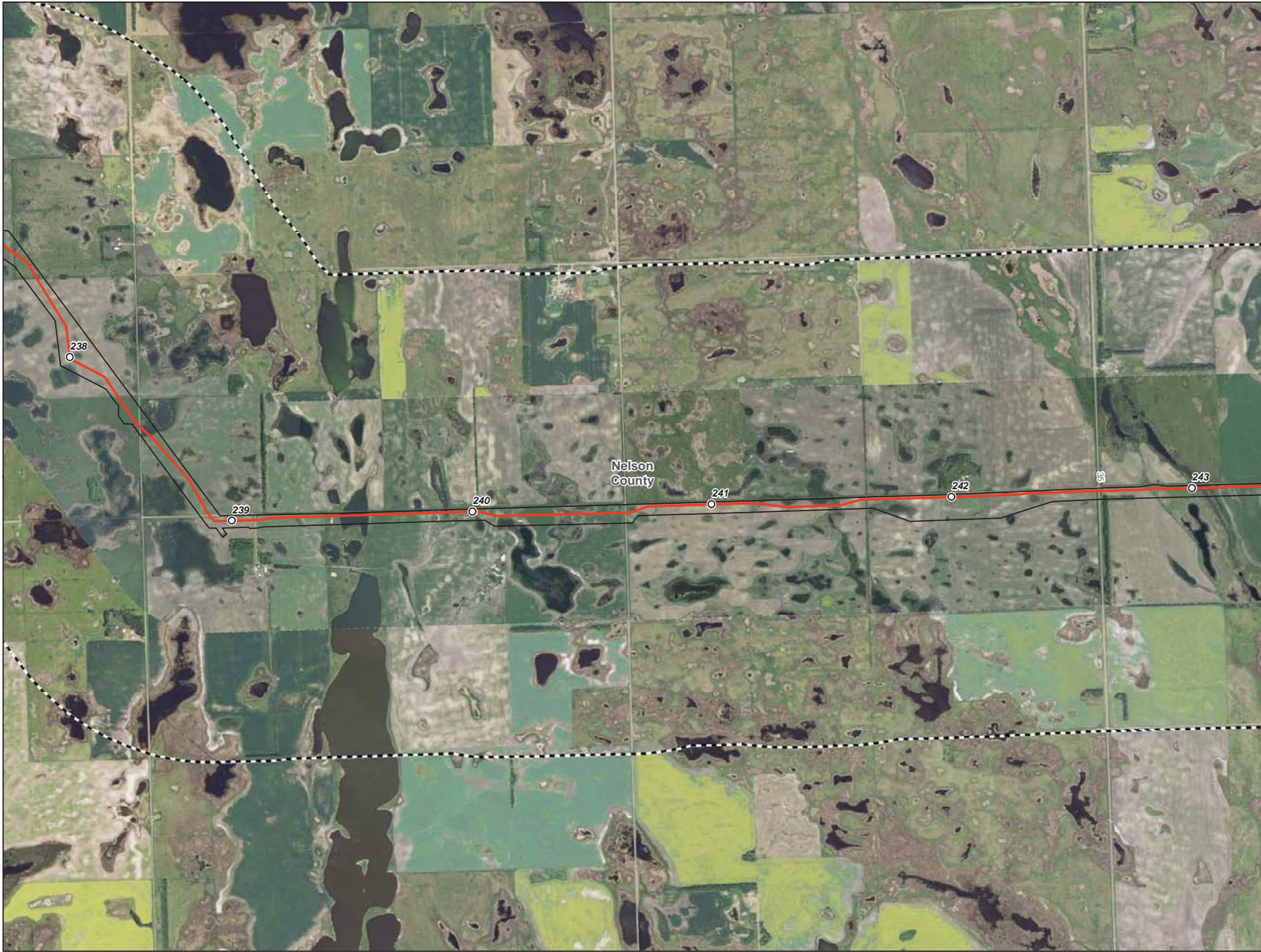
**Enbridge Pipelines
(North Dakota) LLC
Sandpiper Pipeline Project**

Exclusion Areas

Page 48 of 61
Nelson County



Source: USGS, ESRI, and other sources. All rights reserved. © 2013 Enbridge Pipelines (North Dakota) LLC. All other marks are the property of their respective owners.



- Milepost
- Centerline
- ▭ Survey Corridor
- - - 2-mile Study Area
- ▭ Facility
- ▭ Previously Sited Facility
- ▭ County Boundary
- + Land and Water Conservation Fund Lands
- ▲ NRHP Historic Place
- ▭ USFWS-critical habitat

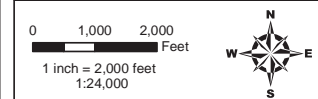
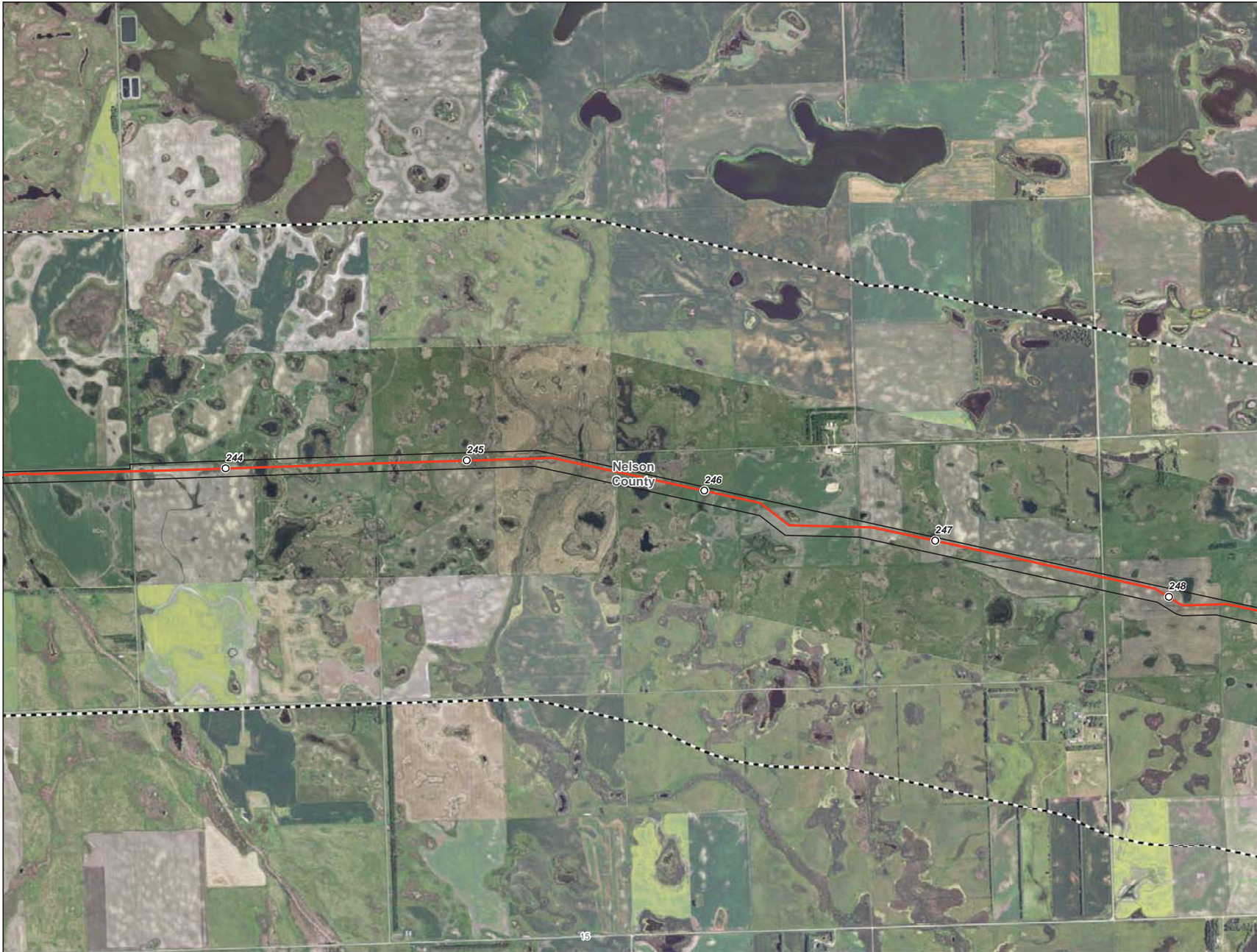
**Enbridge Pipelines
(North Dakota) LLC
Sandpiper Pipeline Project**

Exclusion Areas

Page 49 of 61
Nelson County



Source: USGS, ESRI, and other sources. All rights reserved. © 2013 Enbridge Pipelines (North Dakota) LLC. All rights reserved.



- Milepost
- Centerline
- ▭ Survey Corridor
- - - 2-mile Study Area
- ▭ Facility
- ▭ Previously Sited Facility
- ▭ County Boundary
- + Land and Water Conservation Fund Lands
- ▲ NRHP Historic Place
- ▭ USFWS-critical habitat

**Enbridge Pipelines
(North Dakota) LLC
Sandpiper Pipeline Project**

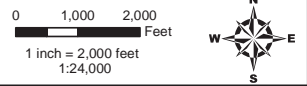
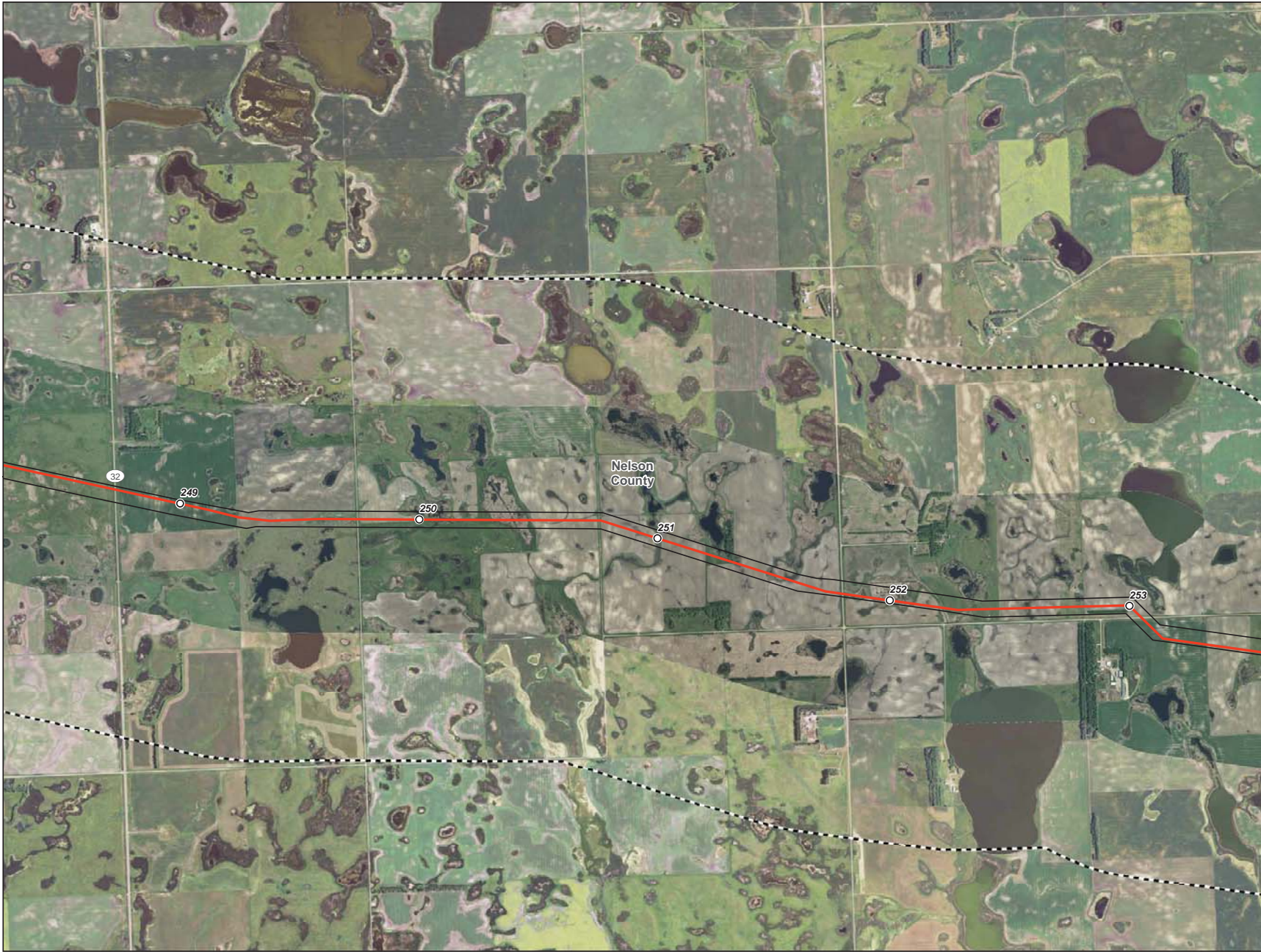
Exclusion Areas

Page 50 of 61
Nelson County

ENBRIDGE

Rev. D 12/16/2013

Source: USGS, ESRI, and other sources. All rights reserved. © 2013 Enbridge Pipelines (North Dakota) LLC. All other marks are the property of their respective owners.



- Milepost
- Centerline
- ▭ Survey Corridor
- - - 2-mile Study Area
- ▭ Facility
- ▭ Previously Sited Facility
- ▭ County Boundary
- ⊕ Land and Water Conservation Fund Lands
- ▲ NRHP Historic Place
- ▭ USFWS-critical habitat

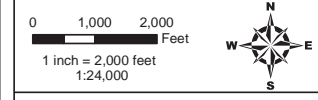
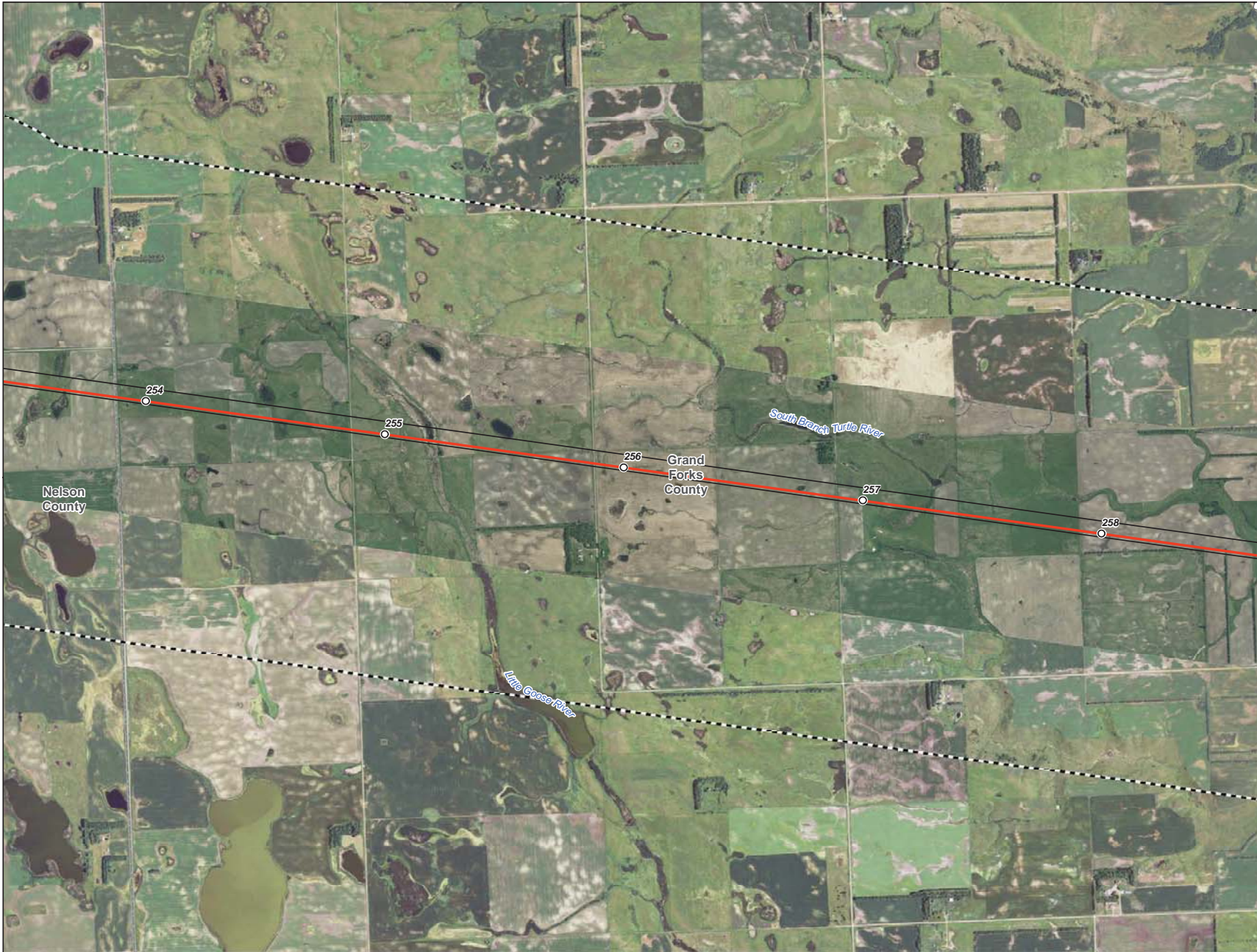
**Enbridge Pipelines
(North Dakota) LLC
Sandpiper Pipeline Project**

Exclusion Areas

Page 51 of 61
Nelson County



SOURCE: USGS/USFWS/USDA



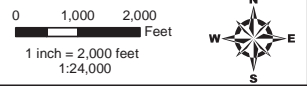
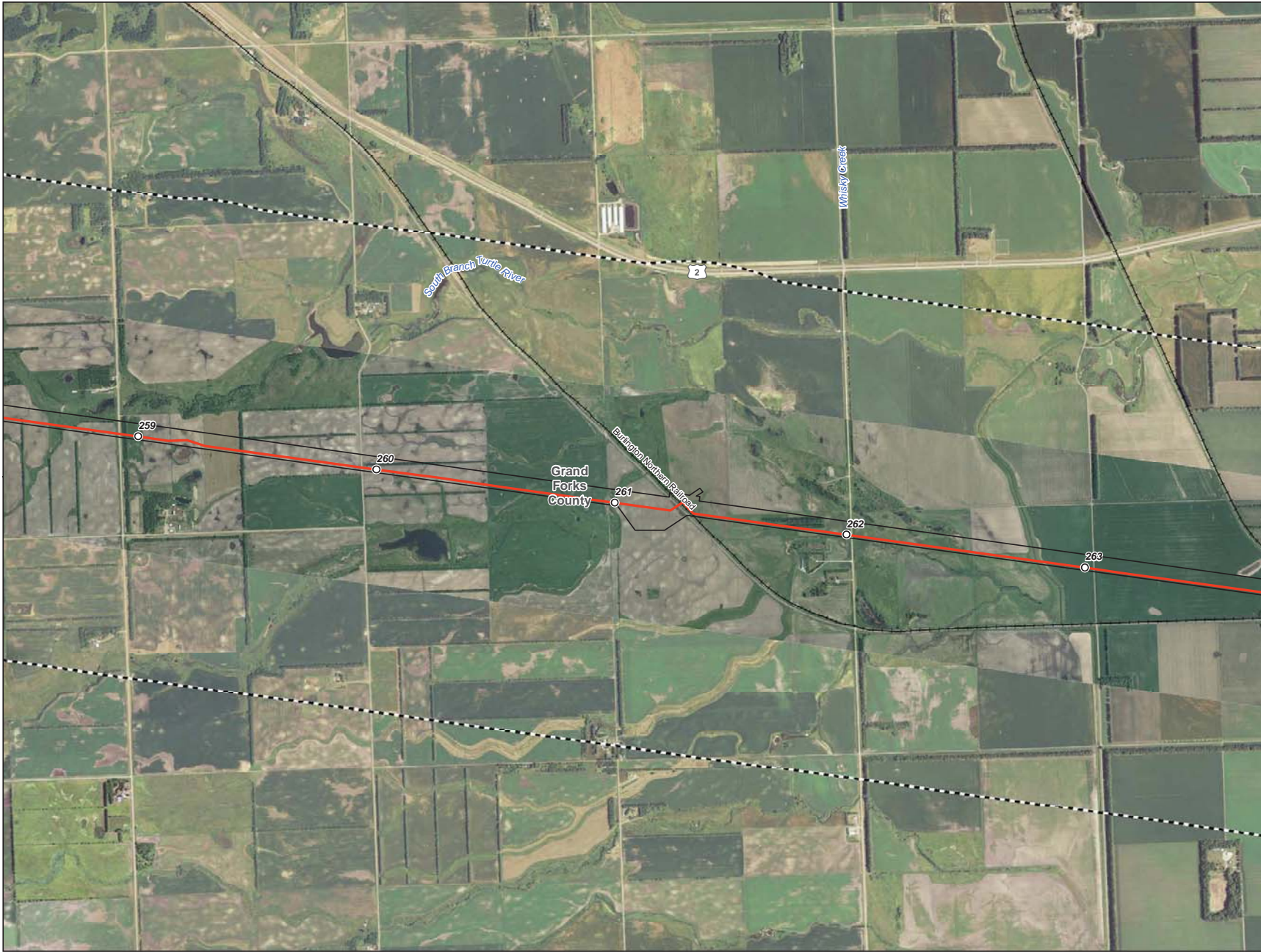
- Milepost
- Centerline
- ▭ Survey Corridor
- - - 2-mile Study Area
- ▭ Facility
- ▭ Previously Sited Facility
- ▭ County Boundary
- + Land and Water Conservation Fund Lands
- ▲ NRHP Historic Place
- ▭ USFWS-critical habitat

**Enbridge Pipelines
(North Dakota) LLC
Sandpiper Pipeline Project**

Exclusion Areas

Page 52 of 61
Grand Forks County





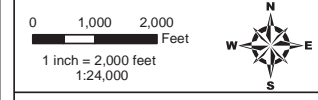
- Milepost
- Centerline
- ▭ Survey Corridor
- - - 2-mile Study Area
- ▭ Facility
- ▭ Previously Sited Facility
- ▭ County Boundary
- + Land and Water Conservation Fund Lands
- ▲ NRHP Historic Place
- ▭ USFWS-critical habitat

**Enbridge Pipelines
(North Dakota) LLC
Sandpiper Pipeline Project**

Exclusion Areas

Page 53 of 61
Grand Forks County





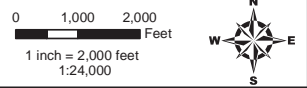
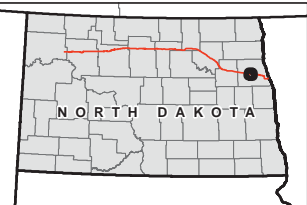
- Milepost
- Centerline
- ▭ Survey Corridor
- - - 2-mile Study Area
- ▭ Facility
- ▭ Previously Sited Facility
- ▭ County Boundary
- + Land and Water Conservation Fund Lands
- ▲ NRHP Historic Place
- ▭ USFWS-critical habitat

**Enbridge Pipelines
(North Dakota) LLC
Sandpiper Pipeline Project**

Exclusion Areas

Page 54 of 61
Grand Forks County





- Milepost
- Centerline
- ▭ Survey Corridor
- - - 2-mile Study Area
- ▭ Facility
- ▭ Previously Sited Facility
- ▭ County Boundary
- + Land and Water Conservation Fund Lands
- ▲ NRHP Historic Place
- ▭ USFWS-critical habitat

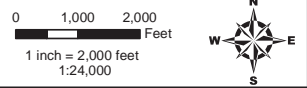
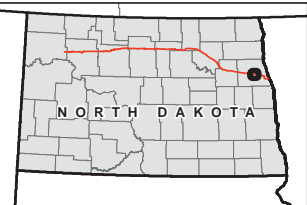
**Enbridge Pipelines
(North Dakota) LLC
Sandpiper Pipeline Project**

Exclusion Areas

Page 55 of 61
Grand Forks County



Source: USGS, ESRI, and other sources. All rights reserved. © 2013 Enbridge Pipelines (North Dakota) LLC. All rights reserved.



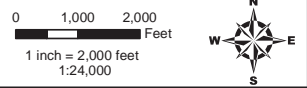
- Milepost
- Centerline
- Survey Corridor
- 2-mile Study Area
- Facility
- Previously Sited Facility
- County Boundary
- Land and Water Conservation Fund Lands
- NRHP Historic Place
- USFWS-critical habitat

**Enbridge Pipelines
(North Dakota) LLC
Sandpiper Pipeline Project**

Exclusion Areas

Page 56 of 61
Grand Forks County





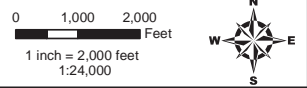
- Milepost
- Centerline
- ▭ Survey Corridor
- ▭ 2-mile Study Area
- ▭ Facility
- ▭ Previously Sited Facility
- ▭ County Boundary
- ⊕ Land and Water Conservation Fund Lands
- ▲ NRHP Historic Place
- ▭ USFWS-critical habitat

**Enbridge Pipelines
(North Dakota) LLC
Sandpiper Pipeline Project**

Exclusion Areas

Page 57 of 61
Grand Forks County





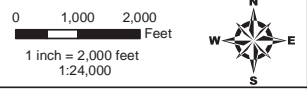
- Milepost
- Centerline
- ▭ Survey Corridor
- ⋯ 2-mile Study Area
- ▭ Facility
- ▭ Previously Sited Facility
- ▭ County Boundary
- + Land and Water Conservation Fund Lands
- ▲ NRHP Historic Place
- USFWS-critical habitat

Enbridge Pipelines (North Dakota) LLC Sandpiper Pipeline Project

Exclusion Areas

Page 59 of 61
Grand Forks County





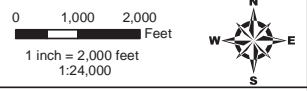
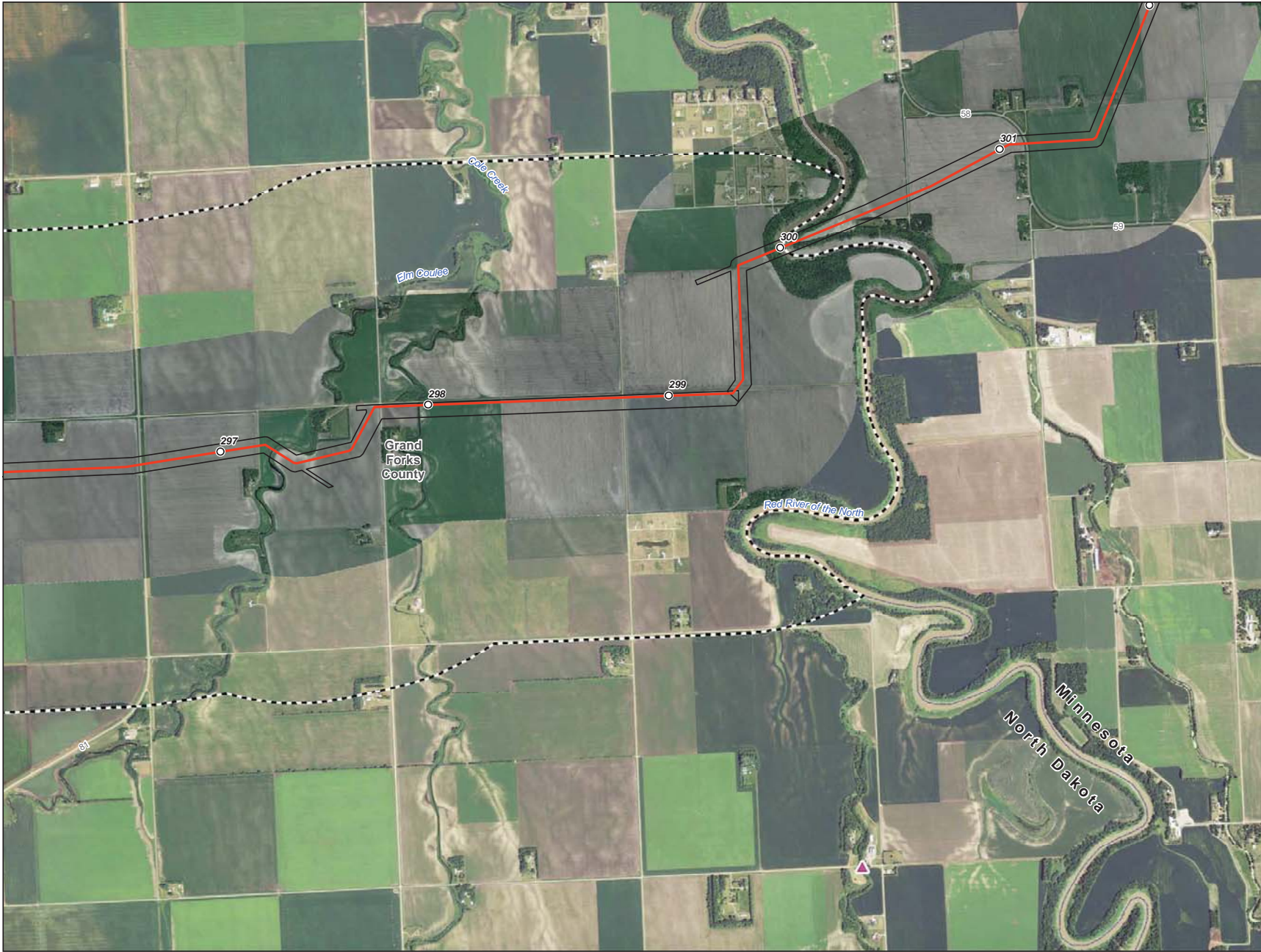
- Milepost
- Centerline
- ▭ Survey Corridor
- - - 2-mile Study Area
- ▭ Facility
- ▭ Previously Sited Facility
- ▭ County Boundary
- + Land and Water Conservation Fund Lands
- ▲ NRHP Historic Place
- ▭ USFWS-critical habitat

**Enbridge Pipelines
(North Dakota) LLC
Sandpiper Pipeline Project**

Exclusion Areas

Page 60 of 61
Grand Forks County





- Milepost
- Centerline
- ▭ Survey Corridor
- - - 2-mile Study Area
- ▭ Facility
- ▭ Previously Sited Facility
- ▭ County Boundary
- + Land and Water Conservation Fund Lands
- ▲ NRHP Historic Place
- ▭ USFWS-critical habitat

**Enbridge Pipelines
(North Dakota) LLC
Sandpiper Pipeline Project**

Exclusion Areas

Page 61 of 61
Grand Forks County

