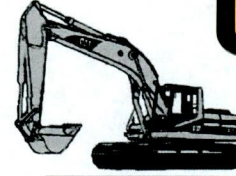
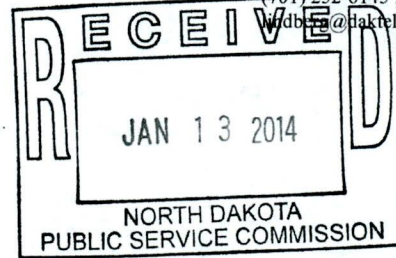


NORTHERN EXCAVATING CO., INC.



Robert Lindberg
President

P O BOX 1108
JAMESTOWN ND 58402-1108
(701) 252-5967 OFFICE
(701) 252-6145 FAX
rlindberg@naktel.com



December 18, 2013

Darrell Nitschke,
Executive Secretary
North Dakota Public Service Commission
600 East Boulevard, Department 408
Bismarck ND 58505-0480

Responses for the 7 - Third Party Damage Complaints from Reservation Telephone Cooperative of Parshall ND are as follows.

1 Contractor cut a 24 fiber optic cable feeding the Ross Central Office

The fiber line was in a trench inundated with water and bad soil conditions. The line was exposed properly (hand dug exposed and protected), however, was damaged when the wall of the excavation caved in breaking the line.

#2 Contractor cut a 25 pair copper telephone cable.

The copper line was in a trench inundated with water and bad soil conditions. The line was exposed properly (hand dug exposed and protected), however, was damaged when the wall of the excavation caved in breaking the line.

#3 Contractor cut a 4 fiber drop to and individuals home.

Line was hand exposed and protected. Utility line was not properly marked and utility line did not follow a direct rout or R/W area, it was running in to the most direct route and not a prescribed route.

40 PU-13-882 Filed 02/05/2015 Pages: 3
Exhibit 8
Public Service Commission

40 PU-13-881 Filed 02/05/2015 Pages: 3
Exhibit 8

40 PU-13-880 Filed 02/05/2015 Pages: 3
Exhibit 8

40 PU-13-879 Filed 02/05/2015 Pages: 3
Exhibit 8

40 PU-13-878 Filed 02/05/2015 Pages: 3
Exhibit 8
Public Service Commission



*COMMERCIAL * RESIDENTIAL * GENERAL EXCAVATING * BASEMENTS * SEWER & WATER * SEPTIC TANKS * FOOTINGS*



40 PU-13-883 Filed 02/05/2015 Pages: 3
Exhibit 8
Public Service Commission

40 PU-13-877 Filed 02/05/2015 Pages: 3
Exhibit 8
Public Service Commission

NORTHERN EXCAVATING CO., INC.



Robert Lindberg
President

P O BOX 1108
JAMESTOWN ND 58402-1108
(701) 252-5967 OFFICE
(701) 252-6145 FAX
lindberg@daktel.com

- #4 Contractor cut a 144 Fiber Optic Cable and the Conduit it was in (2 times same cable)

The fiber line was in a trench inundated with water and bad soil conditions. The line was exposed properly (hand exposed and protected), however, was damaged when the wall of the excavation caved in breaking the line.

Line had been previously excavated and a splice of some type installed, trench wall caved in causing a break in very unstable soil. Line was marked improper due to big loop installed from a previous splice years ago.

- #5 Contractor cut a 75 pair copper telephone cable

Line was not properly marked Ticket # 13167425. The copper line was in a trench inundated with water and bad soil conditions. The line was exposed properly (hand dug exposed and protected), however, was damaged when the wall of the excavation caved in breaking the line. The line was broke before we had a big loop in line after a splicing.

- #6 Contractor cut a 75 pair copper telephone cable (2nd time that day and 3rd time for this cable

The copper line was in a trench inundated with water and bad soil conditions. The line was exposed properly (hand dug exposed and protected), however, was damaged when the wall of the excavation caved in breaking the line, and as explained under Item # 8.

- #7 Contractor cut 75 pair copper telephone cable (2nd time)

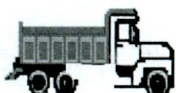
The copper line was in a trench inundated with water and bad soil conditions. The line was exposed properly (hand exposed and protected), however, was damaged when the wall of the excavation caved in breaking the line, and as explained under Item #5.

Responses for the 3 Third Party Damage Complaints from Montana-Dakota Utilities Co. are as follows.

- #1 Contractor Struck 2 natural gas main line with track-hoe, West 3rd St. and Rail Road Ave.

Only one line was encountered during initial excavation, however, during this excavation a second line was encountered, but not marked at anytime.

Dig Tickets: #13132443, #13156745, #13167425



*COMMERCIAL * RESIDENTIAL * GENERAL EXCAVATING * BASEMENTS * SEWER & WATER * SEPTIC TANKS *
FOOTINGS*



NORTHERN EXCAVATING CO., INC.



Robert Lindberg
President

P O BOX 1108
JAMESTOWN ND 58402-1108
(701) 252-5967 OFFICE
(701) 252-6145 FAX
lindberg@daktel.com

#2 Contractor Struck natural gas line Central Ave.

While hand digging for the gas line, our utility probe pierced the poly line, no excessive force was used while probing. #13167425, #13156745 Dig Ticket #'s.

#3 Natural Gas distribution Service Line

Only one line was encountered during initial excavation, however, during this excavation a second line was encountered, but not marked at anytime.
Dig Tickets: #13132443, #13156745, #13167425



*COMMERCIAL * RESIDENTIAL * GENERAL EXCAVATING * BASEMENTS * SEWER & WATER * SEPTIC TANKS *
FOOTINGS*

