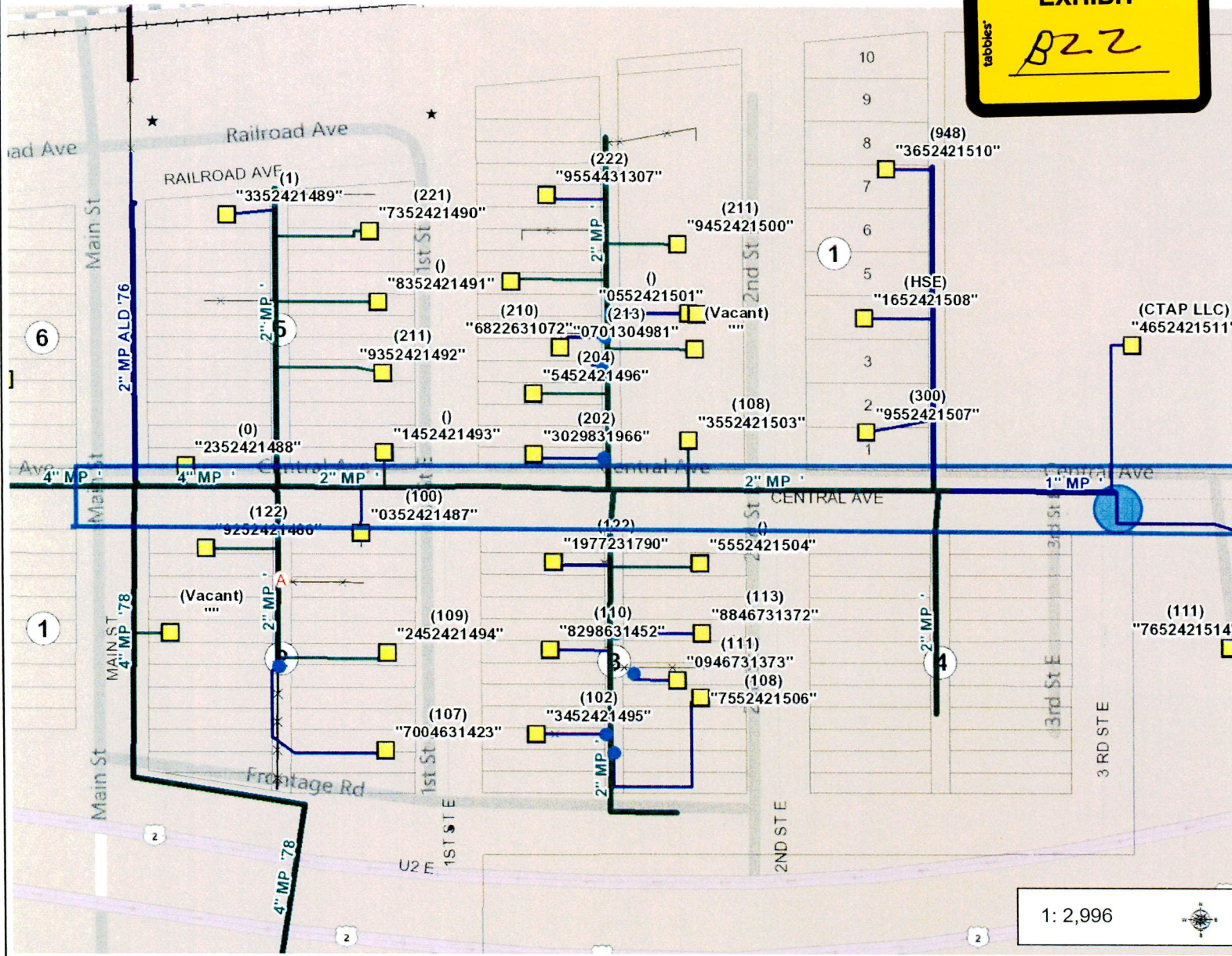


EXHIBIT
tabbles
B22



Legen

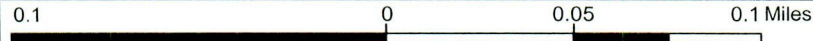
- GA GS-14-230 Filed 06/30/2015 Pages: 1
- GA GS-14-230 Exhibit B22
- Ga 66 GS-14-229 Filed 06/30/2015 Pages: 1
- 66 GS-14-229 Exhibit B22
- 65 GS-13-886 Filed 06/30/2015 Pages: 1
- 65 GS-13-886 Exhibit B22
- 66 GS-13-885 Filed 06/30/2015 Pages: 1
- 65 GS-13-884 Filed 06/30/2015 Pages: 1

- GA Gas Office Note
- GA <all other values>
- GA Created
- GA Field Verified
- GA Completed
- GA Gas Field Line
- GA Excess Flow Valve
- GA CP Rectifier
- GA CP Test Station
- GA CP Isolated Inspection
- GA CP Ground Bed
- GA CP Galvanic Anode
- GA Gas Marker Ball
- GA Gas Service Point
- GA Multiple Meter Service
- GA Single Meter Service
- GA No Meter Service
- GA Gas Station
- GA <all other values>
- GA District Regulator Station
- GA Large Customer Station
- GA Rural Regulator Station
- GA Town Border Station

Notes

Case GS-13-886

Damage occurred inside Located area.



WGS_1984_Web_Mercator_Auxiliary_Sphere
© Montana-Dakota Utilities Company

This map is a user generated static output from the MDU GIS Silverlight mapping website and is for reference only. It is not to be relied upon for construction purposes. It is provided for planning purposes only.

FIELD LOCATES ARE REQUIRED FOR LOCATION OF GAS AND ELECTRICAL FACILITIES

1: 2,996