



BORDER WINDS ENERGY PROJECT

WEEKLY PROJECT REPORT

Weekly report no:	42
Report for week period ending COB Friday:	05/15/2015
Calendar week no:	20

Executive Summary

This Week's Highlights

- Received response from RRC regarding the subgrade condition below the mud mat of remaining WTG Foundations. The mud mat will be removed at T11 and T34. The mud mat at T10 will remain in place;
- Nelson completed installing the bottom mat of rebar at site T10;
- EPS mobilized to site and started ground grid testing. Completed Circuits 5 and 6 and started Circuit 1;
- Received delivery of three (3) grounding transformers;
- Installed the pre-cast for the storm shelter roof at the O&M building on Thursday, 5/14/2015;
- ABS has issued the subcontract and confirmed the schedule with VTI for the security system installation. Installation is scheduled to commence on May 26, 2015;
- Formed and installed rebar for the containment pit at the substation;
- Began digging ground grid trenches in northwest corner of substation;
- Drilling equipment arrived for Evergreen to begin drilling operations for pier installation at substation.

This Week's Key Issues

- Received 0.77" of rain on Thursday, 5/14/2015 resulting in muddy conditions;
- Received NCR-2015-016 from Xcel regarding the compaction concerns observed on the foundations backfilled in November and December 2014;
- Identified culverts with gravel at the inlet. Working to procure rip-rap, control blankets and straw wattles to address the issue.



Safety

*Full description of week's Safety Log can be found in Exhibit 2

Type	Lost Time	Recordable Injury (Medical Aid)	Minor Injury (First Aid)	Equipment Property Damage	Near Miss	Safety Walks
Current Period	0	0	0	0	0	16
Project To Date	1	1	10	21	69	511

Previous Week's TRIR = 2.35 / Current Week's TRIR = 2.28

((Lost Time + Medical Aid) * 200,000) / Total Man Hours

Previous Week's RES Safety Index = 0.95 / Current Week's RES Safety Index = 0.90

((Lost Time * 64) + (Injury * 16) + (Minor Injury * 4) + (Damage * 1) + (Near Miss * 0.25)) / Man Hours * 1000

Weeks Highlights:

- Recent precipitation events and existing saturated soils have resulted in muddy road conditions, rutting, and in some cases temporary road closures. Roads were repaired where equipment could access the area without causing additional damage. In areas where the road surface was too muddy for equipment to safely access, cones and beacons were used to alert all traffic of the potential hazard. Team members used situational awareness when operating equipment and driving onsite during the placement of materials. There were no incidents related to the adverse weather conditions;
- Rosendin team member who was injured last week returned to work on Monday with no lost time and is recovering as expected by the attending physician;
- Site Safety Supervisors reviewed the Rosendin subcontractor, Evergreen Cassions, pier drilling procedures to ensure work will be performed in accordance with safety policies and procedures.

Weeks Issues:

- Delivery drivers have been arriving on site without the required PPE and had not been given proper directions to site by the responsible RES or company expecting the delivery. During the POD meeting on 5/15/2015, it was made clear to all parties in attendance that if a delivery is expected that they need to ensure the delivery drivers are prepared for coming onto the Border Winds Site.

Project Work Hours:

- Weekly Man-hours: 5,136.00
- Total Project Man-hours: 174,741.70
- Hours since Last Recordable Injury: 5136. 0



Environmental

*Full description of week's Environmental Report can be found in Exhibit 2

Type	Major Incident	Minor Incident	Near Miss	Observation
Current Period	0	1	0	2
Project to Date	0	57	3	38

Rolling Incident Score: Previous week: 1.08 / Current Week: 1.10

$((\text{Major Incident} * 16) + (\text{Minor Incident} * 4) + (\text{Near Miss} * 0.25) + (\text{Observation} * 0)) * 1000 / \text{Total Man Hours}$

Week's Highlights:

- Started delivery of all project's cardboard at recycling facility in Rolla.

Week's Issues:

- Received 0.77" of rain on Thursday, 5/14/2015. Ongoing inspection to ensure all BMPs are performing as required;
- Site experienced one (1) minor leak where a half-gallon of hydraulic fluid leaked from a grader operating on the collector system ROW 200' away from JB 1A/1; equipment was taken out of service until the repairs were made and the contaminated soil was removed and disposed of as required;
- Post-storm BMP inspection Identified culverts with gravel at the inlet. Working to procure rip-rap, control blankets and straw wattles to address the issue.



Quality

*Full description of week's Quality Report can be found in Exhibit 4

Type	RES Issued NCRs			RES Issued CPARs			Client Issued NCRs			Client Issued CPARs		
	Issued	Open	Closed	Issued	Open	Closed	Issued	Open	Closed	Issued	Open	Closed
Current Period	0	0	0	0	0	0	1	1	0	0	0	0
PTD	3	0	3	0	0	0	7	2	6	0	0	0

Week's Highlights:

- Building & Earth checking densities for collector trench backfills, roads and culverts, testing Class 5 material gradations & processing proctors;
- Monitored construction at the O & M Building;
- Collecting information and assembling Job Books;
- RRC is testing soils at the substation and WTG Foundation excavations and backfill;
- Inspecting collector trenching & backfills;
- Inspecting site compactions;
- Ground testing was completed for turbine T-3 for NCR-2014-038 with passing results.

Week's Issues:

- Xcel issued NCR-2015-016 due to concern over the backfills which were completed during the winter months and the subsequent settlement identified at T16. Xcel has requested confirmation that the methods and materials used to backfill these specific foundations meet the backfill specifications. A meeting was held between the RES site team, RES Engineering, HSQE, and the Xcel site team to review the NCR, and to develop a plan to address the concern. RES will perform compaction tests at each location in accordance with the procedure provided by RES Engineering;
- Crews continue to struggle with T4 subgrade preparation due to the saturated soils; material was processed in an attempt to dry it out to achieve compaction requirements; RES is considering alternate methods and/or material to complete the excavation and release it to Nelson to begin the foundation construction.



SCHEDULE STATUS

Project duration	68
No. of weeks into contract	44
Contract time passed (%)	64%

Key Activities (Construction)	Weighted %	Percent Complete		
		Contract Schedule	Construction Schedule	Actual
Design Engineering	2.5%	100%	100%	100%
Roads	14%	100%	87%	85%
Crane Pads	6%	6%	6%	4%
Foundations	20%	100%	96%	95%
Collection System	20%	50%	45%	41%
Substation	10%	57%	41%	30%
WTG Delivery, Erection, MCC	20%	0%	0%	0%
O&M Building	5%	100%	68%	57%
Completion	2.5%	0%	0%	0%
Overall Actual Percent Complete				45%

PROGRESS REPORT

PERMIT STATUS

Permit Type / Description	County / State	Responsible Group	Date Needed By	Status
O&M Well Permit	ND State	AB Systems	-	No permit required Awaiting documentation
Hwy Intersection for deliveries	ND State	RES Americas	5/18/2015	Application submitted. Under review.

CONSTRUCTION STATUS

Certificates	Total	Submitted	Signed
Foundation Completion Certificate	75	71	71
Mechanical Completion Certificate	75	0	0
Electrical Works Completion Certificate	1	0	0
Project Mechanical Completion Certificate	1	0	0
Project Substantial Completion Certificate	1	0	0
Project Final Completion	1	0	0



ROADS & CRANE PADS

Item	Weighted %	Budget	Total Completed	Total Remaining	Percent Complete
Roads	70%	Roads			69%
Clear and Grub	20%	152,837	152,837	0	100%
Subgrade	25%	152,837	141,346	11,491	92%
Place and Compact Road Base	30%	207,469	185,555	21,914	89%
Shoulders	15%	152,837	0	152,837	0%
Ditches	10%	152,837	0	152,837	0%
Crane Pads	30%	Crane Pads			3%
Shape and Compact Sub Grade	40%	75	11	64	14%
Place and Compact Road Base	60%	75	0	75	0%

Comments:

- Completed crane pad subgrade at T9 & T31 on Circuit 5;
- Continued to maintain 52nd Ave and 108th St;
- Work effected due to rain and muddy condition.

FOUNDATIONS

Item	Weighted %	Budget	Total Completed	Total Remaining	Percent Complete
Excavations	10%	75	72	3	96%
Mud Mats	5%	75	72	3	96%
Bases	45%	75	71	4	95%
Pedestals	20%	75	71	4	95%
Backfilled	15%	75	71	4	95%
Vestas Ground Kit	5%	75	71	4	95%

Foundation Progress 95%

Comments:

- Received response from RRC regarding the subgrade condition below the mud mat at remaining WTG Foundations;
 - Planning to remove the mud mat at T11 and T34. The mud mat at T10 will remain;
- Continued to dewater and rebuild the subgrade for T4.
- Nelson completed installing the bottom mat of rebar at T10.



COLLECTION SYSTEM

Item	Weighted %	Quantity	Total Received	Total Remaining	Percent Complete
Deliveries	30.0%	Deliveries			94%
Grounding Transformers	10.0%	6	3	3	50%
MV Cable 3/0 AWG AL	15.00%	308,288	314,910	0	100%
MV Cable 350 Kcmil AL	7.50%	140,708	143,964	0	100%
MV Cable 750 Kcmil AL	15.00%	217,740	208,085	0	96%
MV Cable 1000 Kcmil AL	7.50%	88,167	90,485	0	100%
MV Cable 1250 Kcmil AL	20.00%	147,069	150,472	0	100%
Fiber 12 count	2.50%	328,520	336,590	0	100%
Fiber 120 count	2.50%	6,587	6,587	0	100%
Ground Cable	10.00%	299,663	299,663	0	100%
Junction Boxes	5.00%	28	28	0	100%
Rubber Goods	5.00%	1420	1420	0	100%
Installations	50.0%	Installations			25%
Trench	60%	278,230	77,506	200,724	28%
MV & Fiber/Ground Cable	30%	297,841	86,656	211,185	29%
Grounding Transformers	5%	6	0	6	0%
Junction Boxes	5%	28	0	28	0%
Terminations	20.0%	Terminations			0%
Grounding Transformers	10.00%	6	0	6	0.00%
Junction Boxes	30.00%	28	0	28	0.00%
Turbines	60.00%	75	0	75	0.00%

Collection System Progress: 41%

Comments:

- EPS mobilized to site and started ground grid testing. Completed Circuit 5 and 6 and started circuit 1;
- Westwood was on site to stake circuit 1 and crane pads;
- Continued to exchange information between Vestas and RES engineering in regards to short circuit data;
- Received delivery of three (3) grounding transformers;
- Sent box pad cut sheet to Xcel for grounding transformers;
- Sent RFI regarding collection line changes to Xcel.



O&M BUILDING

Activity Description	Required	Unit	Remains	% Comp.
Earthworks	100	%	5	95%
Foundation	100	%	3	97%
Deliver Building	100	%	0	100%
Building Enclosed	100	%	0	100%
Building Interior Framing	100	%	2	98%
Building Electrical	100	%	30	70%
Building HVAC	100	%	75	25%
Plumbing	100	%	30	70%
Building Interior Trim & Finishing	100	%	80	20%
Septic System	100	%	90	10%
Water Well	100	%	100	0%
Fence and Yard Rock	100	%	100	0%

O&M Building Progress: 57%

Comments:

- Continued work on the wall liner, sheet rock, framing, taping, painting and completing up the SCADA room;
- Installed the pre-cast for the storm shelter roof on Thursday, 5/14/2015;
- Completed overhead door installation on Friday, 5/15/2015;
- Continued HVAC, plumbing, and electrical installations. Installed the copper lines on Friday, 5/15/2015;
- Xcel has approved the grading plan inside the fence. Discussing with engineering to address slope and soil stabilization outside the fence;
- Westwood staked the proposed underground utility line and grade for the O&M yard;
- Coordinating with the utility company to install the underground cable for power supply;
- ABS has issued the subcontract and confirmed the schedule with VTI for the security system installation. Installation is scheduled to commence on May 26, 2015.



SUBSTATION

Item	Weighted	Required	Total Completed	Total Remaining	Percent Complete
Design	6%	Design			6%
Design Drawings	6%	100	100	0	100
Deliveries	35%	Deliveries			7%
Structural Steel	15.0%	100	65	35	65%
Main Transformer	30.0%	100	0	100	0%
Control House	15.0%	100	0	100	0%
Relay Panel	15.0%	100	0	100	0%
Arrestors	5.0%	100	0	100	0%
Switches	10.0%	100	0	100	0%
Breakers	10.0%	100	100	0	100%
Construction	45%	Construction			8%
Grading & Drainage	15.0%	100	75	25	75.0%
Foundations	15.0%	100	36	64	36%
Underground/Grounding	10.0%	100	10	90	10%
Structural Steel Work	10.0%	100	0	100	0%
Equipment Installation	10.0%	100	0	100	0%
Control Building/Wiring	10.0%	100	0	100	0%
Transformer Fit Out	10.0%	100	0	100	0%
Commission	10.0%	100	0	100	0%
Fence, Gravel, & Clean Up	10.0%	100	0	100	0%

Substation Progress Rosendin: 21%

Construction & Delivery by RES		Construction			
Main Power Transformer	100%	100	0	100	0%
Grading & Drainage	100%	100	75	25	75%

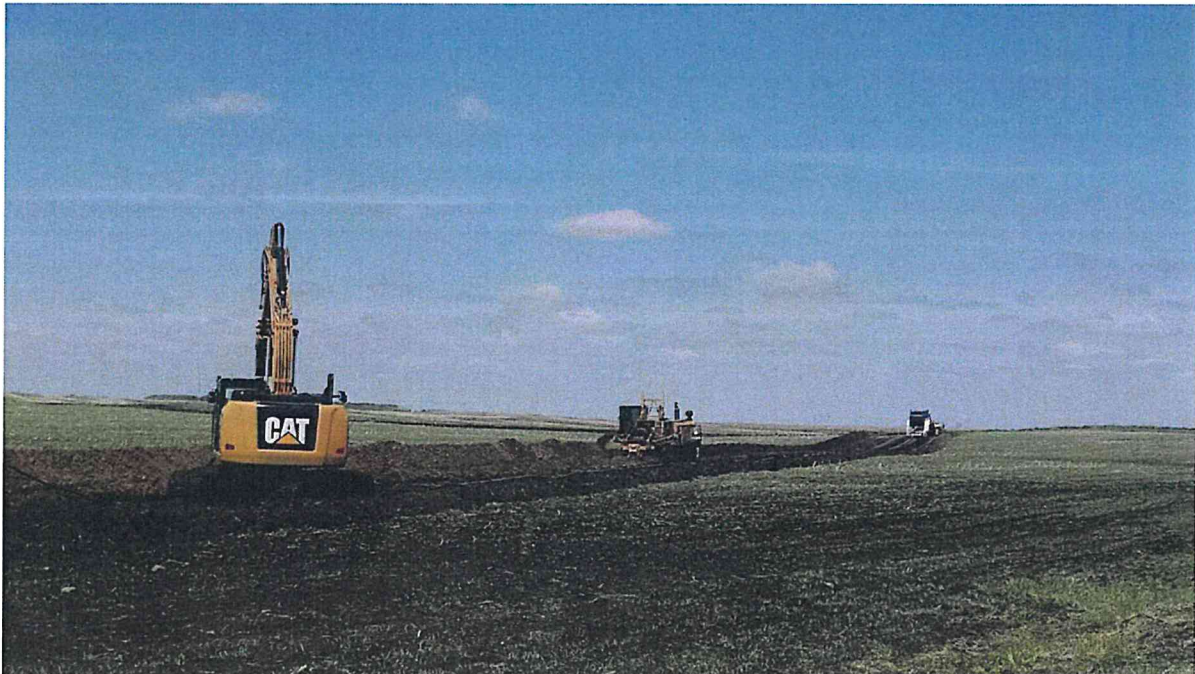
Comments:

- Completed work on the main power transformer (MPT) containment pit in preparation of the concrete placement which is scheduled for 5/18/2015. Work included pit excavation, formwork and rebar installation, and placing of pea gravel;
- Began digging ground grid trenches in northwest corner of substation;
- Drilling equipment arrived for Evergreen to begin drilling operations for pier installation at substation.

Exhibit 1 – Site Photographs



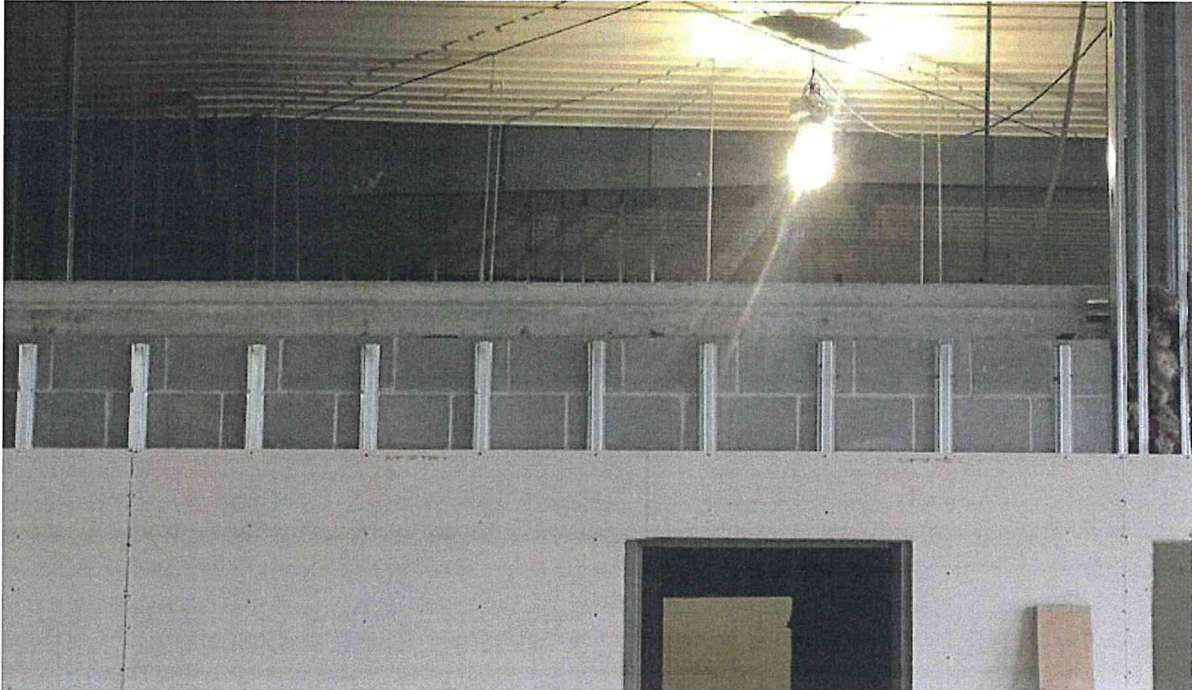
Collection System – Trenching Circuit 1A



Collection System – Trenching Circuit 1A



Collection System – Circuit 5 splice termination



O&M Building – Storm shelter roof installed



Substation – Drill rig



Exhibit 2 – Safety log

#	Date:	Incident Observed During:	Incident Type:	Company Involved:	Incident Details:	Corrective Action Details:	Actions Taken to Prevent Reoccurrence:
545	5/9/2015	Safety Inspection	Hazard Observation	Rosendin	Section 19 First Aid completed. Inadequate at the time of inspection. When an injury occurred at the substation the companies Safety Rep on site did not know how to get to Presentation Medical Center for aid.	During the incident the Safety Rep was escorted to Presentation Medical Center.	All site team members were reminded of the directions to Presentation Medical Center from the site. Additionally Safety Supervisor drove both routes from site to the hospital ensuring hospital direction signs were in place to assist in the event of an emergency.
546	5/9/2015	Safety Inspection	Hazard Observation	RES Americas	Section 5 Electrical Work completed. Inadequate at the time of inspection. Personnel onsite performing electrical work without making the Electrical Manager aware of the work taking place so that it could be inspected and compliance observed.	The Electrical Manager informed all personnel that electrical work conducted on the site needs to be run through his department before it takes place.	Electrical Manager has made it clear any electrical work performed on site needs to be routed through his office at all times.
547	5/12/2015	Safety Walk	Safe Work Observation	RES Earth and Cable	On county road 52 crew preparing cables for junction box installation, JHA good work area looked good, all workers wearing the proper PPE for the task at hand, overall everything looked good.	None, this was a Safe Observation.	None, this was a Safe Observation.



548	5/12/2015	Safety Walk	Hazard Observation	A.B. Systems	A worker was observed spreading sheet rock mud he did not have his side shield on his glasses, workers cutting metal studs not wearing hearing protection.	I talked with the worker who was not using his side shields on his safety glasses he put them on, I talked to the workers not wearing hearing protection and the foreman ear plugs were provided.	Talked with the workers and the foreman about using the proper PPE for the job like the use of side shield on glasses and hearing protection.
549	5/12/2015	Safety Inspection	Hazard Observation	RES Earth and Cable	At T-4 finding generators two that I found being used had no grounds, pit/hole for concrete pour did not have the proper egress for workers to enter and exit pit.	Talked to REC/RES foreman to make proper corrections. Corrections have been made.	I will follow up with crew and other crews doing the same scope of work to assure correction are being followed.
550	5/12/2015	Safety Walk	Safe Work Observation	RES Americas	Vehicles inspection on trucks in the field all emergency equipment ready and available on the two I inspected..	None, this was a Safe Observation.	None, this was a Safe Observation.
551	5/13/2015	Safety Walk	Safe Work Observation	RES/REC	Site wide inspection on PPE all RES/REC and sub-contractors all wearing the proper PPE, good use of gloves for hand protection.	None, this was a Safe Observation.	None, this was a Safe Observation.
552	5/11/2015	Safety Walk	Safe Work Observation	RES Earth and Cable	All PPE in place, spotter being used for backing equipment, JHA in place.	None, this was a Safe Observation.	None, this was a Safe Observation.
553	5/14/2015	Safety Walk	Safe Work Observation	RES Earth and Cable	Crew pumping water out of the pit on T-4 inspection on the equipment being used generator and pumps all equipment on the pad location in good working condition.	None, this was a Safe Observation.	None, this was a Safe Observation.
554	5/6/2015	Safety Walk	Hazard Observation	RES Americas	Floor mats in office-bunching up and getting caught in	Pulled back and straighten	Matts pulled back and straighten to



					door.		prevent trip or a fall.
555	5/6/2015	Safety Walk	Hazard Observation	RES Americas	Employees utilizing and requesting hand sanitizer.	Continued use-infection control.	Restock supply hand sanitizer and continued use.
556	5/11/2015	Safety Walk	Hazard Observation	RES Americas	Deliveries dropped at back entrance blocking walkway trip and fall hazard obstruction of exit.	Moved deliveries out of walk way to clear exit.	Called individuals and company contact for pickup.
557	5/11/2015	Safety Walk	Safe Work Observation	A.B. Systems	Team members working at height had donned and were using proper fall protection systems.	None, this was a Safe Observation.	None, this was a Safe Observation.
558	5/11/2015	Safety Walk	Hazard Observation	A.B. Systems	JHA needed updated contact info for foreman onsite.	Sub-contractor was advised that the information on the JHA had a person that was no longer the site foreman and needed to be updated.	In the morning meeting it was brought up that all of the information on the JHA should be reviewed to ensure accuracy.
559	5/15/2015	Safety Walk	Near Miss	RES Americas	The project laydown yard, storage area, employee parking area and equipment parking area are all covered in mud ranging from 6" to 12" causing multiple work vehicles, equipment and personal vehicles to become stuck requiring towing recovery. Additionally vehicles are sliding in multiple directions when entering the areas causing vehicles to come into close proximity to others equipment and vehicles in the	The Assistant Project Manager and the Site Safety Supervisor discussed the issue and the APM let me know that the areas being fixed are on a list of items to be resolved. Since the Laydown Yard is a focal point of activity and personnel throughout the day and that the area is unsafe I reminded the APM of OSHA's General Duty Clause that we are required to provide a workplace and environment free from hazards.	Discussions with the APM and HSQE for the site have taken place and Site Safety is awaiting a response for a correction date.



					vicinity.		
560	5/15/2015	Safety Walk	Safe Work Observation	Evergreen Cassion	In preparation for pier drilling at the substation RES Safety had Evergreen Cassion walk them through the entire process of drilling and forming the piers. Evergreen has brought all necessary PPE and equipment needed to perform the work safely. Additionally all personnel are trained or certified in all aspects of the work that will take place.	None, this was a Safe Observation.	None, this was a Safe Observation.
561	5/15/2015	Safety Walk	Hazard Observation	Evergreen Cassion	A concrete form has rebar that was not capped to prevent impalement. Electrical Manager had them cap the exposed rebar caps.	Workers that were in the area were told to stop work and cover the exposed rebar.	Evergreen team members were reminded of the importance of covering the exposed rebar around the forms especially when walking on uneven and muddy terrain.
562	5/15/2015	Safety Inspection	Safe Work Observation	Evergreen Cassion	Section 14 Concrete Construction completed. Adequate at the time of inspection.	None, this was a Safe Observation.	None, this was a Safe Observation.
563	5/15/2015	Safety Inspection	Safe Work Observation	Evergreen Cassion	Section 17 Work at Height completed. Adequate at the time of inspection.	None, this was a Safe Observation.	None, this was a Safe Observation.
564	5/15/2015	Safety Walk	Safe Work Observation	RES Earth and Cable	Team members brought JHA when inspector arrived and briefed on site hazards.	None, this was a Safe Observation.	None, this was a Safe Observation.
565	5/15/2015	Safety Walk	Safe Work Observation	RES Earth and Cable	Operator kept spoil piles 2' from edge of trench.	None, this was a Safe Observation.	None, this was a Safe Observation.



566	5/15/2015	Safety Walk	Hazard Observation	RES Earth and Cable	Electrical Manager has concerns of the condition/ construction of 52nd Ave related to the delivery of the Border Winds Sub Station Transformer and possible damage when going over the rough and unlevelled terrain. Additionally how after rains the road condition deteriorates and creates a unsafe driving conditions.	Electrical Manager has emailed Site Management and Civil Superintendent that the roads need to be conditioned and prepared for the transformer delivery in July,	Site Management and Civil Superintendent are working on a plan to correct.
567	5/15/2015	Safety Walk	Hazard Observation	Rosendin	Wet and Slippery conditions-Pieces of materials on the ground.	Two workers were going around picking up material and trash.	Two Rosendin workers were going around and picking up material and trash.



Exhibit 3 – Environmental Log

#	CLASS	SUB-CAT	CONTRACTOR	DATE	INCIDENT DETAILS	ACTION TAKEN TO CORRECT SITUATION	ACTION TAKEN TO PREVENT REOCCURANCE
23053-15-50	5/11/2015	Observation	Informational	5/9/2015	Disposed cardboard onsite for recycle to the city of Rolla recycling center	None	None
23053-15-51	5/15/2015	Observation	Weather Event	5/14/2015	Received 0.77" of rain on the site. Water accumulated in different areas of the site	Perform BMP inspection and ensure all culverts inlets are clear of silt.	Ensure all BMPs are installed properly
23053-15-52	5/16/2015	Minor Incident (Below RQ)	Equipment Failure or leak	5/6/2015	A half-gallon of hydraulic fluid leaked from excavator and on the tires on the collector system ROW near JB1A/1.	The leak was controlled using a absorbent pads and used a shovel to collect and dispose 2 ft3 of spoil into a bucket.	Equipment was fixed before operating again.

Exhibit 4 – Quality Log

- Incidents - None
- CPARs - None
- NCRs - 8

NCR log

Description of Material	NCR Opened (Current Period)	NCR Closed (Current Period)	Total NCR Open (As of this Week)	Total NCR Closed (As of this Week)
Totals			2	6
NCR-2015-016 Backfills and compactions of the turbine bases in freezing conditions	X			
NCR-2014-38, T3 grounding was not installed per specifications			X	



**FIELD QUALITY CONTROL PROGRAM
DEFICIENCY REPORT REGISTER
5/15/15**

No	Description i.e. Roads, Foundations, Electrical	LOCATION	Turbine #	Test Document No:	DEFICIENCY DESCRIPTION	DATE ENTERED	ESTIMATE D COMPLETI ON DATE	DATE CLEARED
1	Roads, Culverts	Road K2 Sta. 21+00	T-28/T-29	USCF-001	Incorrect Culvert Installation	9/29/14		11/24/14
2	Roads, Culverts	Road W# Sta. 00+12	T-59	USCF-001	Incorrect Culvert Installation	9/29/14		
3	Foundations	T-49 Base	T-49	USCF-001	Foundation not protected for cold weather per ACI 306	10/08/14		11/05/14
4	Roads, Culverts	105 th Ave Sta. 15+25		USCF-001	Geogrid not replace after installation	10/14/14		
5	Roads, Culverts	Access Road T2	T-74	USCF-001	Road alignment incorrect, Culverts missing	9/30/14		
6	Roads, Culverts	N1 00+00	T-45	USCF-001	Culvert was not inspected prior or during backfill, improper material used for back fill	11/05/14		
7	Roads, Culverts	Access Road R1	T-63	USCF-001	Soft spots in road and Geogrid is damaged	10/25/14	5/27/15	
8	Roads, Culverts	Access Roads to		USCF-001	Class 5 material is out of specification,	11/13/14	6/20/15	



		T-9, T-10, T-11, T-34, T-35 & T-71			the roads need to be monitored for performance			
9	Roads, Culverts	Access road to T-13 Sta. 8+00	T-13	USCF-001	Geogrid was damaged and the repair was not witnessed by Quality	11/13/14	6/20/15	
10	Roads, Culverts	Culvert at T-26	T-26	USCF-001	Needs to be extended on west end	11/23/14	5/22/15	
11	Roads, Culverts	Access Road C2	T-10	USCF-001	The access road needs to be re-aligned per the land owner's request.	12/03/14	5/22/15	
12	Foundations	O&M Building		USCF-002	Stoop footer at S/E end of building has wrong backfill material	12/05/14	5/29/15	
13	Roads, Culverts	All		USCF-001	Need compaction test results for all roads.	4/08/15		
14	Roads, Culverts	All		USCF-001	Culvert detail needs to be followed- No culverts with correctly placed rip-rap and established grass.	4/08/15		
15	Roads, Culverts	C2.1	T-9	USCF-001	Culvert/LWC not installed around Station 4+00.	4/08/15	6/13/15	
16	Roads, Culverts	E1	T-33/T-34	USCF-001	Culvert/LWC not installed around Station 15+00. Large boulders also installed under road base in the same area.	4/08/15	6/13/15	
17	Roads, Culverts	F2.1	T-13	USCF-001	Geogrid ripped and damaged. Needs to be replaced around Station 6+00.	4/08/15	5/27/15	



18	Roads, Culverts	H1.1	T-20	USCF-001	Culvert/LWC not installed around Station 2+00.	4/08/15	6/13/15	
19	Roads, Culverts	K1	T-26	USCF-001	Does not follow RFI No:23053-024.	4/08/15	During Reclaim	
20	Roads, Culverts	L1	T-50	USCF-001	Culvert install too high.	4/08/15	5/22/15	
	Roads, Culverts	Q2	T-36/T-37	USCF-001	Culvert/LWC not installed around Station 25+00. Geogrid ripped and damaged around Station 27+00 to Station 29+00. Needs to be replaced.	4/08/15	5/27/15	
21	Roads, Culverts	P1	T-3	USCF-001	Culvert installed too high.	4/08/15	5/22/15	
22	Roads, Culverts	W1	T-40	USCF-001	Culvert/LWC not installed around Station 6+00.	4/08/15	5/27/15	
23	Roads, Culverts	W2	T-58	USCF-001	Culvert/LWC not installed around Station 17+00.	4/08/15	5/27/15	
24	Roads, Culverts	W3	T-59	USCF-001	Large boulders installed under road base and around culvert, Culvert at the entrance installed too high at both inlet and outlet.	4/08/15	5/27/15	
25	Roads, Culverts	O2	T-43	USCF-001	Culvert not installed at the entrance. Not on Plans. Conditions require	4/08/15		
26	Roads, Culverts	N1	T-45	USCF-001	Large boulders installed under road base and around the culvert.	4/08/15		



27	Roads, Culverts	N3	T-47	USCF-001	Large boulders installed under road base.	4/08/15		
28	Roads, Culverts	R1	T-63	USCF-001	Geogrid ripped and damaged. Needs to be replaced around Station 2+00.	4/08/15	5/27/15	
29	Roads, Culverts	R2	T-66	USCF-001	Culvert/LWC not installed around Stations 15+00 and 21+00.	4/08/15	5/27/15	
30	Roads, Culverts	R2.1	T-64	USCF-001	Culvert/LWC needs to be installed before the tower location.	4/08/15	5/27/15	
31	Roads, Culverts	S1	T-60/T-61/T-62	USCF-001	Large boulders installed under road base and around culverts on both sides on 52nd Ave, Culvert/LWC needs to be installed around Station 30+00.	4/08/15		
32	Roads, Culverts	T1	T-73	USCF-001	Culvert not installed at the entrance, Culvert/LWC not installed around Stations 19+00 and 33+00.	4/08/15	6/03/15	
33	Roads, Culverts	T2	T-74	USCF-001	Culvert not installed at the entrance, Temporary culverts installed for foundation construction around Station 3+00 - Permanent culvert(s) needs to be installed.	4/08/15	6/04/15	
34	Roads, Culverts	T3	T-75	USCF-001	Culvert not installed at the entrance.	4/08/15	6/04/15	
35	Roads, Culverts	105 th St		USCF-001	Geogrid damaged between Stations	4/08/15	6/04/15	



					55+00 and 80+00			
36	Roads, Culverts	107 th St		USCF-001	Culvert needed at the corner of 107th St. and Access Road O1, Corner of 107th St. and 52 Ave. large boulders used under road base material.	4/08/15	5/27/15	
37	Roads, Culverts	108 th St		USCF-001	Many areas from T23 to T3 where the geogrid has been damaged and there is not enough coverage class 5 material over the geogrid	4/08/15	5/27/15	



Exhibit 5 – RFI Log

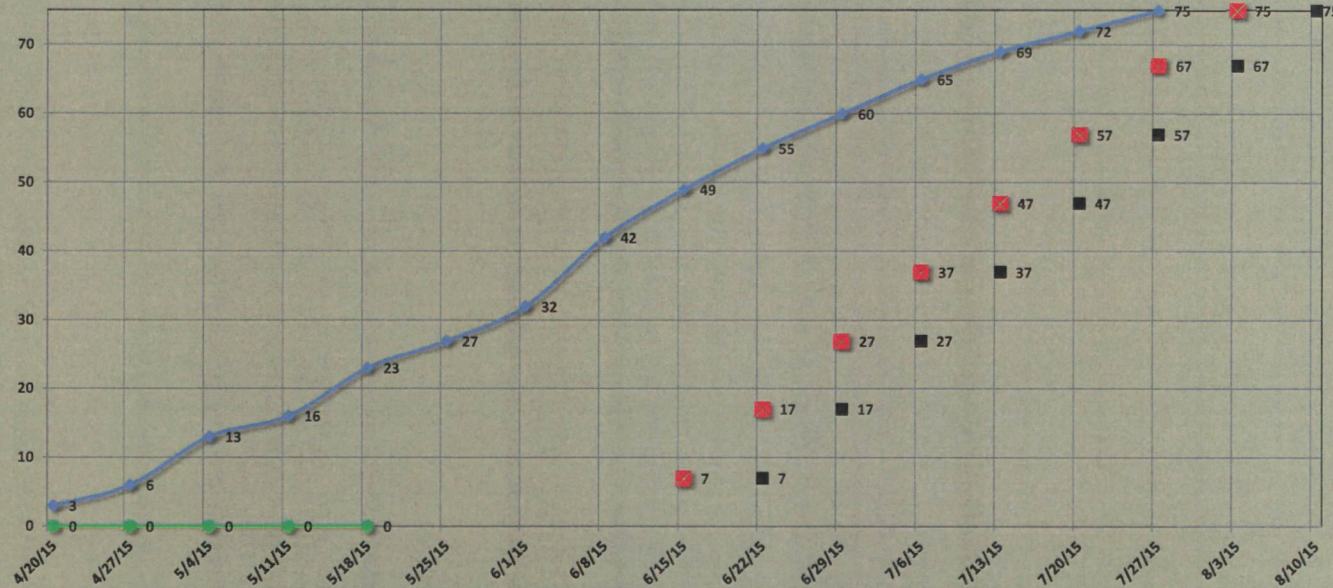
*Open RFIs and RFIs closed last week

	Generate d By	Com pany	Sent To	Company	Subject	Date Sent	Response Requeste d By	Type: Civil, Electrical, etc.	Status / Comments	Date Closed
23053-30	Shabeeb Abdul Khader	RES	Bradley Morrison	Xcel Energy - Generation	Install crushed aggregate on the substation site	10/31/2014	11/6/2014	Civil	Xcel Responded. RES to perform density test the week of 5/18/2015.	
23053-51	Lester Archer	RES	Brad Morrison	Xcel Energy - Generation	DC Station Battery	2/13/2015	2/20/2015	Electrical	Received response on 2/20/15. Requested Battery Sizing calculation for battery charger approval	
23053-81	Shabeeb Abdul Khader	RES	Brad Morrison	Xcel Energy - Generation	Cap Switchers	5/1/2015	5/4/2015	Substation	Xcel requested RES engineering review.	
23053-82	Emad Alaydi	RES	Brad Morrison	Xcel Energy - Generation	Substation testing and commissioning requirements	5/4/2015	5/8/2015	Substation		
23053-83	Emad Alaydi	RES	Brad Morrison	Xcel Energy - Generation	Public and Local IP address	5/4/2015	5/8/2015	Substation		
23053-84	Emad Alaydi	RES	Brad Morrison	Xcel Energy - Generation	T1 & POTS line	5/7/2015	5/13/2015	Substation		
23053-85	Aaron Thooft	RES	Brad Morrison	Xcel Energy - Generation	Collection line movement	5/14/2015	5/20/2015	Substation		
23053-86	Lester Archer	RES	Brad Morrison	Xcel Energy - Generation	Peace garden observation	5/15/2015	5/21/2015	Substation		

Last Updated: 5/18/2015

Border Winds - Crane Pad Completion Progress Chart

Number of Crane Pads Complete



	4/20/15	4/27/15	5/4/15	5/11/15	5/18/15	5/25/15	6/1/15	6/8/15	6/15/15	6/22/15	6/29/15	7/6/15	7/13/15	7/20/15	7/27/15	8/3/15	8/10/15
Planned Crane Pads Complete	3	6	13	16	23	27	32	42	49	55	60	65	69	72	75		
Actual Crane Pads Complete	0	0	0	0	0	0	0	0	0	0	0	0	0	0	0	0	0
Anticipated WTG Deliveries									7	17	27	37	47	57	67	75	
Guaranteed WTG Deliveries										7	17	27	37	47	57	67	75

